

1899

A Bed-Time Song

Ethelbert Woodbridge Nevin
Composer

Lillian Dynevor Rice
Lyricist

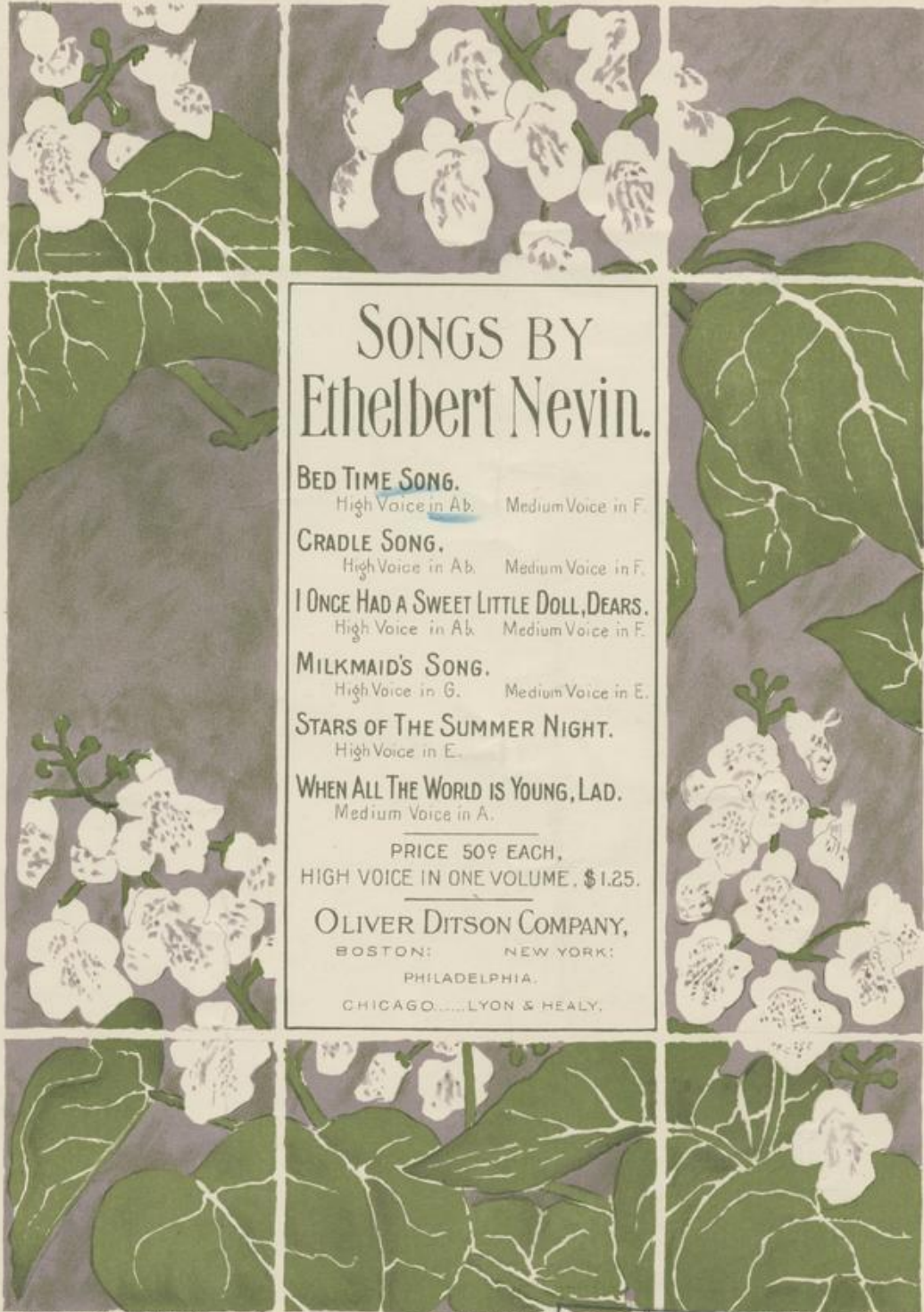
Follow this and additional works at: <https://digitalcommons.library.umaine.edu/mmb-me>

Recommended Citation

Nevin, Ethelbert Woodbridge and Rice, Lillian Dynevor, "A Bed-Time Song" (1899). *Maine Sheet Music Collection*. Score 10.
<https://digitalcommons.library.umaine.edu/mmb-me/10>

This Book is brought to you for free and open access by DigitalCommons@UMaine. It has been accepted for inclusion in Maine Sheet Music Collection by an authorized administrator of DigitalCommons@UMaine. For more information, please contact um.library.technical.services@maine.edu.

Anna Stuckland
September 15, 1905.



**SONGS BY
Ethelbert Nevin.**

BED TIME SONG.
High Voice in Ab. Medium Voice in F.

CRADLE SONG.
High Voice in Ab. Medium Voice in F.

I ONCE HAD A SWEET LITTLE DOLL, DEARS.
High Voice in Ab. Medium Voice in F.

MILKMAID'S SONG.
High Voice in G. Medium Voice in E.

STARS OF THE SUMMER NIGHT.
High Voice in E.

WHEN ALL THE WORLD IS YOUNG, LAD.
Medium Voice in A.

PRICE 50¢ EACH,
HIGH VOICE IN ONE VOLUME. \$1.25.

OLIVER DITSON COMPANY,
BOSTON: NEW YORK:
PHILADELPHIA.
CHICAGO.....LYON & HEALY.

Copyright MDCCLXXIX by Oliver Ditson Co., Boston

F. C. Brown, Inc. et al.

Copyright MDCCLXXIX by Oliver Ditson Co., Boston

Ve Ne.
000069
Nevin

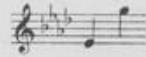
Bagaduce Music
Lending Library
Blue Hill, Maine
Donor: 1246

To Miss Anne Paul.

3

A BED - TIME SONG.


(New and revised edition.)




LILLIAN DYNEVOR RICE.


ETHELBERT NEVIN.

With motion.


VOICE. 


PIANO. 

Sway to and fro in the twi - light grey,




This is the fer - ry for Sha - dow - town; It al - ways sails at the end of day,





Just as the dark - ness is clos - ing down. Rest, lit - tle head, on my shoul - der, so; A

dolce 

sleep - y kiss is the on - ly fare, Drift-ing a-way from the world we go,

p

Ba-by and I in the rock-ing chair, See where the fire - logs glow and spark,

mf

Glit-ter the lights of the sha-dow-land; The win - ter rain in the win - dow, hark! Are

p

sf

rip - ples lap-ping up - on its strand. There! where the mir-ror is glanc-ing dim, A

mezzo voce

ben legato

lake lies shimmering cool and still, Blossoms are waving above its brim,

ral - - - len - - -

Those over there on the window-sill, Rock slow, more slow in the dusky light,

tan - - - do *Quite slow.*

tan - - - do

Silently lower the anchor down! Dear little passenger, say "Good night" —

We've reached the harbor of Shadow-town.

ral - - - len - - - tan - - - do

pp *ral - - - len - - - tan - - - do* *L.H.*

SONGS BY AMERICAN COMPOSERS

Johns, Clayton	The Sun Kissed the Clover.	High voice in D. Medium voice in B	.40
do	Sleep, Baby, Sleep.	High voice in G. Medium voice in E	.40
Jordan, Jules	A Song of the Norseman.	Medium voice in B	.50
Klein, Bruno Oscar	Golden-tressed Adelaide. Op. 65, No. 5.	High voice in Eb. Low voice in C	.60
do	Nae Shoon to Hide Her Tiny Taes. Op. 65, No. 3.	High voice in Ab. Low voice in F	.50
do	To the Wood-lark. Op. 65, No. 1.	High voice in G. Low voice in E	.50
Lang, Margaret Ruthven	I Knew the Flowers Had Dreamed of You.	High voice in Ab	.50
do	On an April Apple-bough.	High voice in Eb	.50
La Villa, Paolo	My Little Girl.	High voice in F	.50
Levett, D. M.	Only a Song.	Medium voice in F	.60
Manney, Charles Fonteyn	My True Love hath My Heart. Op. 1, No. 5.	Medium voice in Gb	.40
do	Orpheus with His Lute. Op. 3, No. 5.	Medium voice in Db	.40
Marshall, John P.	O Mighty One. (<i>O Maitre de tout.</i>)	Medium voice in Eb	.40
Marston, G. W.	Across the Far Blue Hills, Marie.	High voice in E. Medium voice in C	.40
do	Tender and True.	Medium voice in Eb	.40
Marzo, Edouardo	An Easter Song.	Medium voice in F	.60
do	Mariquita. (<i>Bolero.</i>)	High voice in A. Low voice in F	.60
Nevin, Ethelbert	Bed-time Song.	High voice in Ab. Medium voice in F	.50
do	Cradle Song.	High voice in Ab. Medium voice in F	.50
do	I Once Had a Sweet, Little Doll.	High voice in Ab. Medium voice in F	.50
do	Milkmaid's Song.	High voice in G. Medium voice in E	.50
Osgood, Geo. L.	Down the Shadowed Lane She Goes.	High voice in G. Med. voice in F. Low voice in D	.50
do	My Little Woman.	High voice in Eb. Bass voice in A	.40
do	Wake Not, But Hear Me, Love.	High voice in Ab. Medium voice in F	.40
Paine, John K.	Early Springtime. Op. 29, No. 3.	High voice in C \sharp minor	.40
do	Matin Song. Op. 29, No. 1.	High voice in Ab	.40
Pasmore, Henry Bickford	The Summer Wind. (<i>Der Zephyr.</i>)	High voice in Ab	.30
Penfield, Smith N.	O Lay Thine Hand in Mine, Dear.	Bass voice in G	.40
Roeder, Martin	Night Thought. (<i>Traumbild.</i>)	Medium voice in F	.50
do	Spanish Serenade.	High voice in Ab	.50
do	The Chalice of the Lily.	High voice in G	.50
Rogers, James H.	April Weather.	High voice in Ab	.50
do	Bid Me to Live.	High voice in E. Medium voice in Cb	.50
Sawyer, Frank E.	In Springtime.	High voice in Gb	.40
do	Nightingales.	High voice in F	.40
do	Shine On Oh, Stars. (<i>Romanes.</i>)	High voice in F. Medium voice in D	.50
Schnecker, P. A.	A Kiss in the Rain.	High voice in D	.50
do	Love's Philosophy.	High voice in Eb. Medium voice in G	.40
Smith, Gerrit	Boat Song.	Medium voice in Eb	.40
Smith, Wilson G.	Kiss Me, Sweetheart.	High voice in Eb. Medium voice in C	.40
Wood, Mary Knight	Thy Name.	Medium voice in Db	.50
Woodman, R. Huntington	Lend Me Thy Lance.	High voice in F	.40
do	Old Winter Comes.	Low voice in G minor	.50

THE ABOVE IS BUT A PARTIAL LIST OF SONGS BY THE COMPOSERS NAMED.

BOSTON

OLIVER DITSON COMPANY

New York
C. H. DITSON & CO.

Chicago
LYON & HEALY.

Philadelphia
J. E. DITSON & CO.