

MAINE SPRUCE ON
IKE'S LAWN

ADVERTISEMENTS

GREAT NORTHERN PAPER COMPANY HAS GOOD TIMBERLAND RECORDS

Great Northern Paper Company made its first purchase in Pittston Township in 1901. In 1909, C. E. Gilbert cut 1700 acres, removing 5,578,000 FBM or an equivalent of 7.2 cords per acre. Spruce content was 17% under 10" D.b.h. and fir content was 28%. A small amount of pine and cedar was cut at the same time.

The photograph below, taken in 1959, shows part of Gilbert's operating area.

The tract was cut over again in 1951 by Odilon Belanger for stumpwood, removing 9.94 cords per acre of spruce and fir. Fir volume this time was 66%. Yellow birch and maple logs have been cut throughout the area since 1950.

In the foreground of the photograph is

a spruce and fir stand, where a permanent sample growth plot was established 36 years ago. The type at that time was mixed softwood, with raspberry bushes and grass for ground cover. There were 1200 spruce and fir trees per acre under the two-inch class. The over-story was yellow and white birch.

The plot area has been reviewed many times by foresters since 1924 and the plot was reserved during Belanger's operations for further study. The latest plot review in 1957 showed 12.58 cords per acre of spruce and fir and the average annual increment for the previous five years had been .55 cords per acre.

**TIMBERLAND RECORDS ARE INVAL-
UABLE IN FOREST MANAGEMENT.**





No. 1-WSQ Pulley Type Tree Trimmer (Square End Mount)

BARTLETT MEYLAN SAW

CUTS PRUNING TIME UP TO 25%!

Because of demand for a tree trimmer head designed for mounting on a square end pole, we have produced a one-piece hook having a boxlike shank so as to accommodate our $1\frac{1}{2} \times 1\frac{1}{4}$ -in. rectangular poles. This type supports the pole on three sides, permitting quick, easy assembly to a square end pole. The operating parts are the same as used on our No. 1-W Pulley Type Tree Trimmer and are interchangeable.

This design retains the full strength of the pole at the point of greatest stress and, for added ruggedness, we fit this tool with our Laminated Sitka Spruce poles. Use Bartlett compound lever trimmers for close, smooth cuts.

Write for new catalog showing all Bartlett tools and supplies.

BARTLETT MFG. CO.

3003 GRAND BLVD.

The M-414 is especially designed for pruning lower branches on pine and spruce. It enables a man of average height to prune $9\frac{1}{2}$ ft. above ground without a ladder, saving up to 25 per cent in time. Curved 16-in. blade made of special grade heavy tool steel with 7 teeth per inch. Specially tapered 36-in. handle lessens fatigue.

M-414, 16" blade, \$12.00

M-414, 18" blade, \$12.50

Delivered in U.S.A.

BARTLETT TREE PAINT



for treating all pruning wounds. Pure Egyptian black asphalt base protects against fungi. Will not crack, blister or freeze.

SMITH INDIAN FIRE PUMP

Fire fighting authorities call the Indian "a one man fire department" and tell us "the Indian is worth its weight in gold."

PROTECT YOUR HOME AND FARM from FIRE

Don't let FIRE catch you unprepared. Protect your property with **INDIAN FIRE PUMPS!** Ideal for forest, grass and grain field fires. Also excellent for spraying all crops, disinfectants and whitewash. Low - priced. Literature FREE. **D. B. SMITH & CO.** 0000 Main St. Utica 2, New York

ONLY CLEAR WATER USED

with INDIAN Fire PUMPS

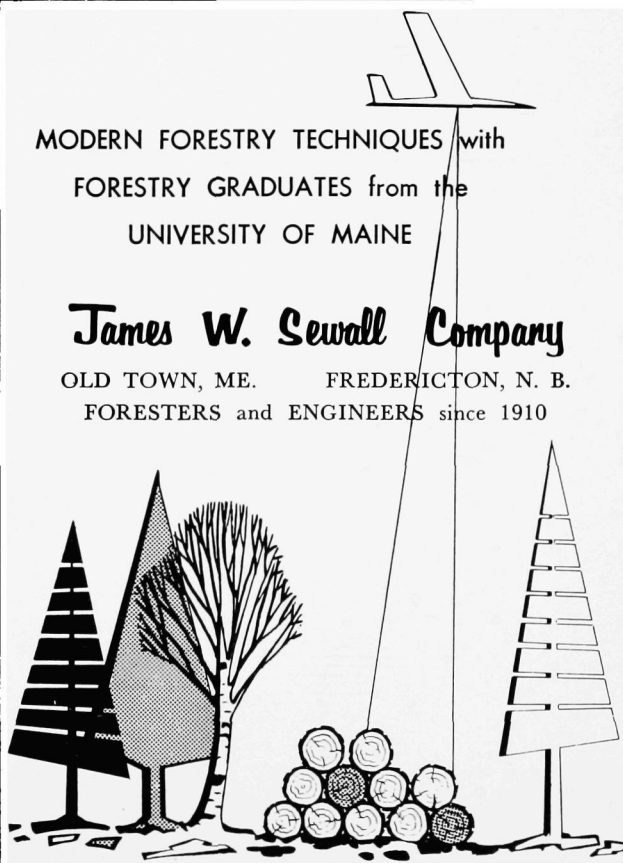
D. B. SMITH & COMPANY

Utica 2, New York

MODERN FORESTRY TECHNIQUES with
FORESTRY GRADUATES from the
UNIVERSITY OF MAINE

James W. Sewall Company

OLD TOWN, ME. FREDERICTON, N. B.
FORESTERS and ENGINEERS since 1910





From the Press of Furbush-Roberts Printing Co., Bangor





KEYES FIBRE COMPANY

Waterville, Maine

Manufacturers of

MOLDED PULP AND FIBROUS
PLASTIC PRODUCTS

KEEP MAINE GREEN

C. N. BROWN COMPANY

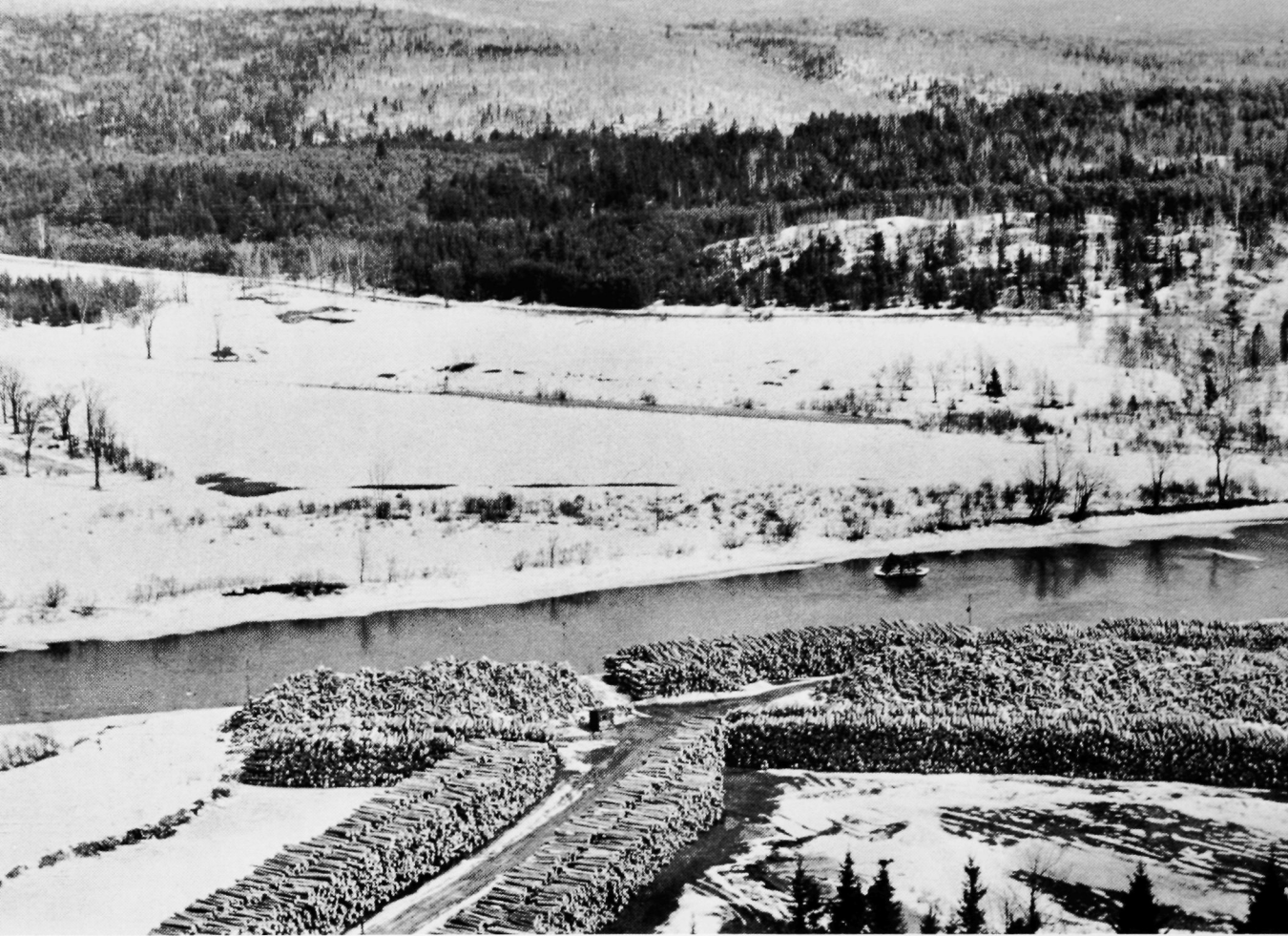
Manufacturers and Wholesalers

LOVELL, ME. Tel. WAwick 5-2101

White Pine — Hemlock — Spruce
Kiln Dried — Knotty Pine Panel
All 8' Lengths

Trailer Delivery Throughout the Northeast

Sawmill, Planing Mills and Dry Kilns



SAUNDERS BROTHERS

Westbrook, Maine

*Manufacturers of Dowels and
Hardwood Products*

We purchase white and yellow
birch delivered to our mills —
roadside — stumpage — timberlands.

Compliments of

FORSTER MFG. CO., INC.

Farmington, Maine

One of the world's leading
Manufacturers of Quality Woodenware





STOWELL-MacGREGOR
DIVISION

COATS & CLARK, INC.

Mills at
Dixfield and Dover-Foxcroft, Maine

SPOOLS DOWELS
NOVELTIES

*For The Best
Choose Our Best
Lumbering Tools*

SNOW & NEALLEY

in
Bangor, Maine



MAINE DOWEL CORPORATION

Farmington, Maine

We regularly purchase white birch, delivered to our mill or roadside. We also buy white birch stumpage and lands which include white birch among other species.

SHORT CUT TO TOMORROW!

Yes, in forestry, we now can shorten the time it takes to get Tomorrow's job done.

We can do this largely because our search for better ways to speed up the forestry processes has been accompanied by unprecedented developments in the field of forestry equipment and supply. The tools for Tomorrow's job are available now—today.

Much of this development springs from research at Forestry Suppliers, Inc., the nation's oldest and largest forestry supply house. Its new Catalog No. 9, issued this spring, lists more than 2,000 items—quality items from all corners of the globe.

Sooner or later, as a professional forester, you will turn to Forestry Suppliers, Inc. for your tools and equipment. So why not start in 1960? Write today for your copy of Catalog No. 9.

FORESTRY SUPPLIERS, INC.

P. O. Box 8305, Battlefield Station,
Jackson 4, Miss.

We wish to take this opportunity
to congratulate the Foresters on a
fine magazine.

We would like to call your
attention to the Log Rules the store
has in stock.

This store sells them all over the
country
and
this is the only source of supply.

University Store Co.



