

2013

# Town of Edgecomb Maine Zoning Map

Edgecomb, Me.

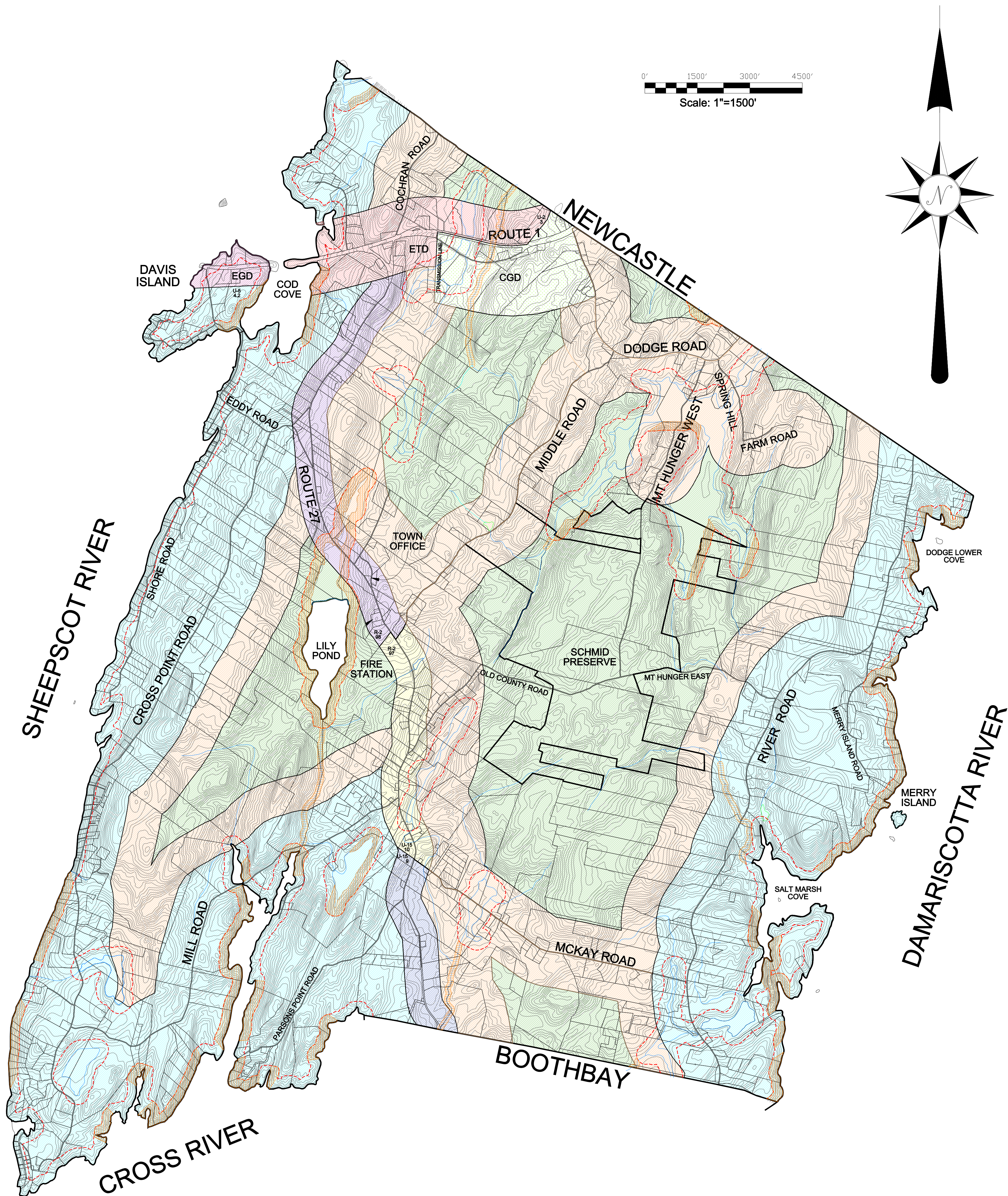
Follow this and additional works at: <https://digitalcommons.library.umaine.edu/towndocs>

---

## Repository Citation

Edgecomb, Me., "Town of Edgecomb Maine Zoning Map" (2013). *Maine Town Documents*. 6779.  
<https://digitalcommons.library.umaine.edu/towndocs/6779>

This Map is brought to you for free and open access by DigitalCommons@UMaine. It has been accepted for inclusion in Maine Town Documents by an authorized administrator of DigitalCommons@UMaine. For more information, please contact [um.library.technical.services@maine.edu](mailto:um.library.technical.services@maine.edu).



LEGEND

EDGECOMB GATEWAY DISTRICT (EGD)	
EDGECOMB THOROUGHFARE DISTRICT (ETD)	
COMMERCIAL GROWTH DISTRICT (CGD)	
ROUTE 27 CORRIDOR, AREA I	
ROUTE 27 CORRIDOR, AREA II	
ROUTE 27 CORRIDOR, AREA III	
WOODLAND DISTRICT	
RURAL DISTRICT	
MARINE DISTRICT	
LIMITS OF SHORELAND ZONE	
STREAM PROTECTION DISTRICT	
RESOURCE PROTECTION DISTRICT	

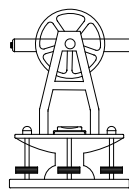
NOTES:

1. The depiction of the zoning districts shown on this map is merely illustrative of their general location. This map is for zoning purposes and is not a substitute for site specific evaluation to determine the exact location of features on the face of the earth.
2. This map is compiled from the April 2000 municipal tax maps and, therefore, should be considered as less accurate than those tax maps.
3. Resource Protection District areas shown hereon are based on possible areas of sustained steep slopes pursuant to Article III, Section 1.8.1.3 of the ordinance. Additional areas which meet this criteria may exist. Portions of the areas shown may not meet the criteria. Other areas which should be included as Resource Protection District areas under Section 1.8.1.1 (adjacency to moderate or high value waterfowl and wading bird habitats), Section 1.8.1.2 (floodplains), Section 1.8.1.4 (wetlands) and Section 1.8.1.5 (unstable soils) are not shown hereon.
4. This map is based on information from Maine Office of G.I.S. and from Sheepscot Valley Conservation Association.

OFFICIAL ZONING MAP  
Town of Edgecomb, Maine  
April 11, 2013



Karl Olson & Associates, Inc.  
David C. Tonry Professional Land Surveyors H. Karl Olson  
147 Bradford Road  
Wiscasset, Maine 04578  
Tel/Fax: (207)882-7008



Attest: \_\_\_\_\_ Date: \_\_\_\_\_  
Claudia Coffin, Town Clerk