

3-2016

# The Town of Woolwich, Maine

Woolwich Communications Committee

Follow this and additional works at: <https://digitalcommons.library.umaine.edu/towndocs>

---

## Repository Citation

Woolwich Communications Committee, "The Town of Woolwich, Maine" (2016). *Maine Town Documents*. 6757.  
<https://digitalcommons.library.umaine.edu/towndocs/6757>

This Newsletter is brought to you for free and open access by DigitalCommons@UMaine. It has been accepted for inclusion in Maine Town Documents by an authorized administrator of DigitalCommons@UMaine. For more information, please contact [um.library.technical.services@maine.edu](mailto:um.library.technical.services@maine.edu).

# The Town of Woolwich, Maine

MARCH 2016



## Recreation Committee expansion planned



**From Beth Harrington**

Have you ever wanted to watch your children/grandchildren play tee-ball without crossing the Sagadahoc Bridge? Or maybe learn how to preserve your garden veggies, take a family hike around Woolwich or learn about bee keeping? If the answer is **yes**, we are excited to let all our community members know that a new Town of Woolwich Recreation Department is in the planning stages!

Our purpose and vision is to develop and direct a broad range of year round activities and recreational opportunities for all age groups that will "enrich

the citizens and visitors" of Woolwich.

A soccer program piloted in the Fall proved to exceed expectations – over 80 K-5

children participated on 8 teams – coached by 16 volunteer parents and community members. Older WCS Wildcat soccer players co-coached their younger peers and a thriving "snack shack" kept the side-lines happy. That success combined with overwhelming requests to continue has spear-headed these efforts for Woolwich's own recreation department.

In our first year we will start and con-

tinue a variety of developmental youth sports teams, plan community and family events along with offering adult enrichment classes.

With the support of the Select board, our group is moving forward toward a start date of July 2016 and is asking for \$7,000.00 on the May Town Warrant. This budget request absorbs the Junior Athletics appropriation and also does not include about \$2000 in income from the program. If approved, the Board of Directors would be appointed by the selectboard.

**Photos: 5th grader Ella Jackson below. Volunteer Romy Polizotto & her K-2 team talk strategy above.**



### Calendar of Events

April 9  
8th grade Auction  
Woolwich Central School

May 7 at 9 am  
Town Meeting  
Woolwich Central School

May 14 4:30 - 6:30 pm  
Spaghetti Supper  
Woolwich Central School

June 14 8 am - 8 pm  
Primary Election  
RSU Budget  
Woolwich Central School

Look for stories elsewhere in this newsletter!



**ALEWIVES  
ARE IN OUR  
FUTURE**

## Survey Says? Saturday for Annual Town Meeting this year

The Annual Special Town Meeting will be Saturday, May 7, this year. After many years of holding the annual meeting on a week night, the Selectboard voted to switch to a Saturday this year. As a result of discussions amongst the board last fall, an "Unofficial Expression of Interest" greeted voters last

November. It asked residents if they preferred a week night, Saturday, or no preference. After counting the ballots, Selectboard member Allison Hepler found a nearly 2-1 desire for Saturday, while a great many people had no preference. The decision was made to hold the Annu-

al Special Town Meeting on May 7 at Woolwich Central School at 9 am. While spring weather may make residents reluctant to head inside for the morning, we are hoping the good people of Woolwich will resist the urge to go fishing or start their gardens until after Town Meeting. Details to follow.

## Settling Accounts with PAYT: Income, Expenses, and the Future

Residents may recall that last May, voters at Town Meeting approved implementing a “pay as you throw” method of disposing of non-recyclable household waste. 15 and 30 gallon orange bags were made available for \$1 and \$2, respectively, for trash.

The goal, as stated by the

Woolwich Solid Waste and Recycling Committee, was to reduce the amount of material going into landfills and also to save the Town money. Other towns using this program reach both goals – because people are paying for bags, they tend to throw out less. On the saving side, Towns receive the revenue from the sale of the bags, and also realize lower fees for disposing of garbage (Towns pay a per ton cost for disposal.) After PAYT passed at Town Meeting, voters also agreed to reduce the trash budget by \$36,000.

As a result of two citizen petitions last summer and fall, a referendum at the November election asked residents to repeal the program, and the repeal passed. The PAYT program ended with January’s trash pick-up. Residents could return unused bags until February 12 and receive a full refund.

So, what are the num-

bers? Did the 5 months of PAYT reduce the amount of trash generated by Woolwich residents? Did the Town generate income that would go toward reducing the trash budget? Yes, and yes.

First, the trash reduction: In the 5 months that Woolwich participated in PAYT, residents disposed of 174 fewer tons of trash compared to the previous year. This reduced amount of garbage does not include trash from residential dumpsters.

On the financial side, WasteZero, the nonprofit company that administered and manufactured the program, reported a total revenue from the bags of \$35,230. The company stopped producing the bags after the November 4 vote but the Town became responsible for buying back the excess inventory. The Town also bought back unused bags from residents, as well as from the retailers sell-

ing them. In total, the Town now has several pallets of unused bags, and paid out \$18,360, leaving a net revenue of \$16,870 from the sale of the bags. When that is added to the savings realized from the reduced tipping fees on the trash disposal -- \$15,637 (174 tons at \$89.86 per ton) – the net savings from participating in (and ending) PAYT is \$32,509.

This results in a shortfall to the Town of \$3,491 from

the \$36,000 removed from the trash budget last May. However, the Selectboard does not plan to hold a Special Town Meeting to approve spending money to cover the shortfall because (a) the Town will likely sell the bags at cost to anyone who wants them, and (b) there is \$25,000 in the current budget to cover unexpected trash costs, which has never been tapped.

Waste Zero/PAYT Results			Tonnage Savings			
total Revenue		\$35,230.12	Sept-Dec 2014	tons disposed	322.03	
Returned Bags		-\$856.00	Sept-Dec 2015	tons disposed	162.04	
Paid Waste Zero		-\$10,547.00	Difference of		159.99	
Paid Waste Zero		-\$4,246.40				
Paid to Retailers		-\$2,710.00	Tipping fee per ton \$89.86	times 159.99	\$14,376.70	Realized savings
			Jan 2015 tons	disposed	50.44	
			Jan 2016 tons	disposed	36.4	
			Difference of		14.04	
			Times 89.86		\$1,261.63	
Net Revenue		\$16,870.72				
Sept - Dec Savings		\$14,376.70				
January Savings		\$1,261.63				
		\$32,509.05				
Removed from Budget		\$36,000.00				
Short on replacement		\$3,490.95				



See page 3 for story —>



## Cable TV Highlights Woolwich in the Civil War

Special programming is being shown on Woolwich Cable TV at 10:00 A. M. Monday through Friday. The current program is "Woolwich during the Civil War," which was provided by the Woolwich Historical Society.

FMI on the presentation see: "Civil War Gun Found in Woolwich May Have Belonged to Wiscasset Bridge Tender" by Charlotte Boynton in the *Lincoln County News*.



### SPAGHETTI SUPPER!!

The annual tradition is back! The Woolwich Central School Spaghetti Supper will be held on Saturday, May 14, 2016 from 4:30 to 6:30 p.m. in the school gymnasium.

Don't miss out on the meal of spaghetti and meat sauce, salad, homemade bread, pies and other desserts, coffee, and juice--all to benefit the eighth grade trip to Washington, D.C.

Tickets are available at the door or from any seventh grader; prices are \$20 for a family ticket, or \$6 per adult, \$5 per senior, and \$3 for children age 3 to 12 (2 and under are free).



## Route One Repairs on Tap This Summer: White-Line-Hugging to Disappear



In a move seen as welcome news to many

summer and early fall months" this year.

As drivers who frequent that stretch of the highway well know, the best driving must be done by either hugging the rumble strip in the center line or the white line on the edge of the road. Otherwise, it sometimes feels like a dirt road.

Some are taking a "wait and see" attitude but it will be welcome whenever it happens!

Woolwich residents who drive Route 1, Maine Department of Transportation is planning to repave the rutted section of Route 1, namely, from about the lower entrance to the George Wright Road to just north of Montsweag Rd.

Contractors are scheduled to be doing the resurfacing "in the



## Patten Free Library Supports Woolwich Teens

**From Lesley Dolinger,  
Director**

The Patten Free Library is committed to the development and education of young adults in our community. We value the partnership with the Town of Woolwich and we support Woolwich teens in leadership roles within the Library. Six of the eight current members of our Teen Library Council are from Woolwich: Nathaniel and Wilow Rines, Jack Martin, Valur

Fannur, and Emma Harrington. The Council helps create and promote quality teen programming, and is the brainchild behind the annual Teen Writing Contest, the annual Student Art Show, and the very popular "Haunted Patten" event. It is also responsible for building and installing Bath's first "Little Free Library" at the YMCA, and for a variety of other teen events. The group also created a float for the 2015 Heritage Days Parade, and has been actively involved in the re-

design of our current teen space.

Woolwich teens are also well-represented in most teen events and programs. Over the past three years,

there have been 12 entries from Woolwich teens in the Writing Contest and five winners. In last year's art show, there were six entries from Woolwich teens. Of the 48 participants in our Teen Summer Reading program, 16 were Woolwich residents. Woolwich teens have participated in babysitting classes, art classes, attended our summer movie series, and are part of our regular Magic Cards group and our teen girls' book group.

In addition, we have established a collaborative relationship with Woolwich Central School where our outreach librarian is a frequent guest instructor. She has taught library classes for 6<sup>th</sup>, 7<sup>th</sup>, and 8<sup>th</sup> grade on how to borrow and download eBooks, and has promoted summer reading programs at the Library.

We look forward to continuing our relationship with Woolwich teens as we expand services and plan for the future.



## WOOLWICH RECREATION COMMITTEE "GOES GREEN"

Support the Woolwich Rec Committee and help the Environment. Canvas bags are \$10 each or 2 for \$18.



**Send your ideas for future articles to us!**

**E-mail:**

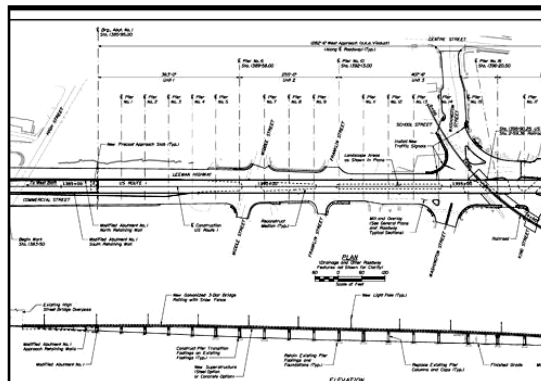
administrator@woolwich.us OR aheplerwoolwich@gmail.com

**SIGN UP!**

Newsletters will be available electronically. Be sure to sign up on the Woolwich Website to receive your copy. Contact us if you'd like a copy mailed to you. The Communications Committee is looking for a new member.

## Bath Viaduct Replacement Begins in October 2016

Serving 18,000 vehicles per day, the nearly 60 year old viaduct which carries Route 1 traffic over Bath will be replaced by Reed & Reed of Woolwich. Starting this fall, after Columbus Weekend, construction will continue through the winter months with the target of completion in May 2017 prior to Memorial Day. Maine DOT engineers and City of Bath officials have



developed traffic control plans through the downtown area to accommodate

pedestrians, BIW employees, through and local traffic. Once the existing viaduct is demolished and the new structure is in the process of being rebuilt, work will take place day and night to minimize disruptions to travel through Bath and to those doing business downtown. You can follow construction updates through either the City of Bath website at [cityofbath.com/viaduct/](http://cityofbath.com/viaduct/) or sign up for alerts from Maine DOT at [maine.gov/mdot](http://maine.gov/mdot).



# It's that time again: Tax Help Available — AARP and CA\$H Maine



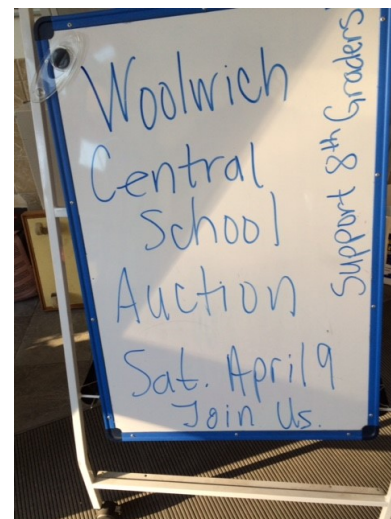
## AARP TAX-AIDE FREE INCOME TAX ASSISTANCE

*For low and moderate-income people, handicapped and senior citizens*  
February 1 – April 18 Unless Otherwise stated

<b>Bath Area Senior Activity Center</b> 45 Floral Street Bath, ME 04530	Monday 9 AM – 3 PM Saturdays 9 AM – 1 PM No appointment required Contact receptionist 207-443-4937
<b>Patten Free Library</b> 33 Summer Street Bath, ME 04530	Wednesday 10 AM – 3 PM Thursdays 10 AM – 7:30 PM No appointment required Contact circulation desk: 207-443-5141
<b>Boothbay YMCA</b> 261 Townsend Road Boothbay Harbor, ME 04538	Monday 9 AM - noon Appointment required Call Carol Ostermann 207-633-6748
<b>Wiscasset Recreation Center</b> 242 Gardiner Road Wiscasset, ME 04578	Tuesday 9 AM – noon Appointment required Call Carol Ostermann 207-633-6748
<b>Curtis Memorial Library</b> 23 Pleasant Street Brunswick, ME 04011	Mondays 10:00 AM – 2 PM (February and March only) Wednesdays 3:30 PM – 7 PM Fridays 12:30 – 4 PM By appointment, Walk-ins accepted Call 207-725-5242 X 510
<b>People Plus</b> 35 Union Street Brunswick, ME 04011	Tuesday 8:30 AM - noon Thursday 1 PM – 4:30 PM By appointment, Walk-ins accepted Call: 207-729-0757
<b>Freeport Community Services</b> 53 Depot Street Freeport, ME 04032	Wednesday 8 AM – 11:30 AM Appointment required 865-4743 X100 leave a message, calls returned Thursday 10 – 1 PM
<b>Topsham Public Library</b> 25 Foreside Road Topsham, ME 04086	Thursdays 9 AM – 12:30 PM By appointment, Walk-ins accepted Contact main desk: 207-725-1727

Bring photo ID for you, Social Security Card for you and dependents and tax records and a copy of last year's return, if available.  
For possible Property Tax/ Renters rebate bring related documents.  
Bring health insurance information for everyone on the return.  
All tax related documents: W-2's, 1099's,

## Save the Date!



Local musical group "The Montsweagers" performed March 13 at the South Woolwich Volunteer Fire Company's annual "Cabin Fever Reliever." Irish music was on tap.



## FREE Tax Preparation

by IRS-certified volunteer tax preparers

- Free
- Confidential
- Reliable & Secure

**Get the refund you deserve – fast!**

Available to anyone whose combined or individual income is up to \$54,000 in 2015

**Call 844-3702** to make an appointment

Appointments offered through April 1, 2016  
in Brunswick, Bath and Damariscotta

All locations are IRS authorized e-file providers

Learn more at [www.CashMaine.org](http://www.CashMaine.org)



Woolwich Town Office  
13 Neguasset Rd.  
Woolwich Maine 04579



## Asplundh Tree Cutting Around Power Lines begins

Asplundh Tree crews are back in town to prune around power lines throughout Woolwich as part of Central Maine Power's regular program to minimize power outages related to tree contract. CMP manages trees along its distribution system on a five-year cycle designed to reduce tree-related outages. The utility estimates that since the five-year cycle program began in 2008, it has cut tree-related outages by approximately 34 percent.

Generally, the tree crews prune a minimum of eight feet on either side and 15 feet above primary electric wires. Additionally,

tree crews remove tree species growing within primary wire clearance zone. Secondary lines and service cables only receive about two feet of clearance.

CMP contracts with professional arborists who are required to follow practices established by the International Society of Arboriculture. These include consideration for the health, shape, strength, growth rate, and appearance of trees before and after pruning. CMP notifies customers about its vegetation management activities every year with inserts in its bills. Customers can sign up to receive a notice when tree trimming is happen-

ing in their area. For more information, call CMP Customer Service at [1-800-750-4000](tel:1-800-750-4000).

People with questions about trees and power lines can call CMP at [1\(800\)750-4000](tel:1-800-750-4000) and place a notification for Mei-Ling Cheung to review your concern. If the tree concern is out of CMP's specifications to remove or prune, then she recommends that you call the CMP to schedule to have your service cable dropped so that landowners may use a qualified licensed arborist to complete the tree work safely.

