

The University of Maine

DigitalCommons@UMaine

Vocal Popular Sheet Music Collection

Public domain (may be downloaded in full)

1928

Little Mother

Lew Pollack
Composer

Erno Rapee
Composer

Follow this and additional works at: <https://digitalcommons.library.umaine.edu/mmb-vp>

Recommended Citation

Pollack, Lew and Rapee, Erno, "Little Mother" (1928). *Vocal Popular Sheet Music Collection*. Score 6527.
<https://digitalcommons.library.umaine.edu/mmb-vp/6527>

This Book is brought to you for free and open access by DigitalCommons@UMaine. It has been accepted for inclusion in Vocal Popular Sheet Music Collection by an authorized administrator of DigitalCommons@UMaine. For more information, please contact um.library.technical.services@maine.edu.

Little Mother

WITH UKULELE ARRANGEMENT

Lullaby Waltz From the William Fox Production **FOUR SONS**

by
**ERNO RAPEE and
LEW POLLACK**

WRITERS OF
"CHARMAINE"
"DIANE" etc.



Vp. 008810
1928
LITTLE



Bagadine Music
Lending Library
Blue Hill, Maine
Donor: 502


Sherman, May & Co.
SAN FRANCISCO

MADE
USA

BESIDE A LAZY STREAM


(ALL THE WORLD WAS MINE)

Tune Uke
G C E A

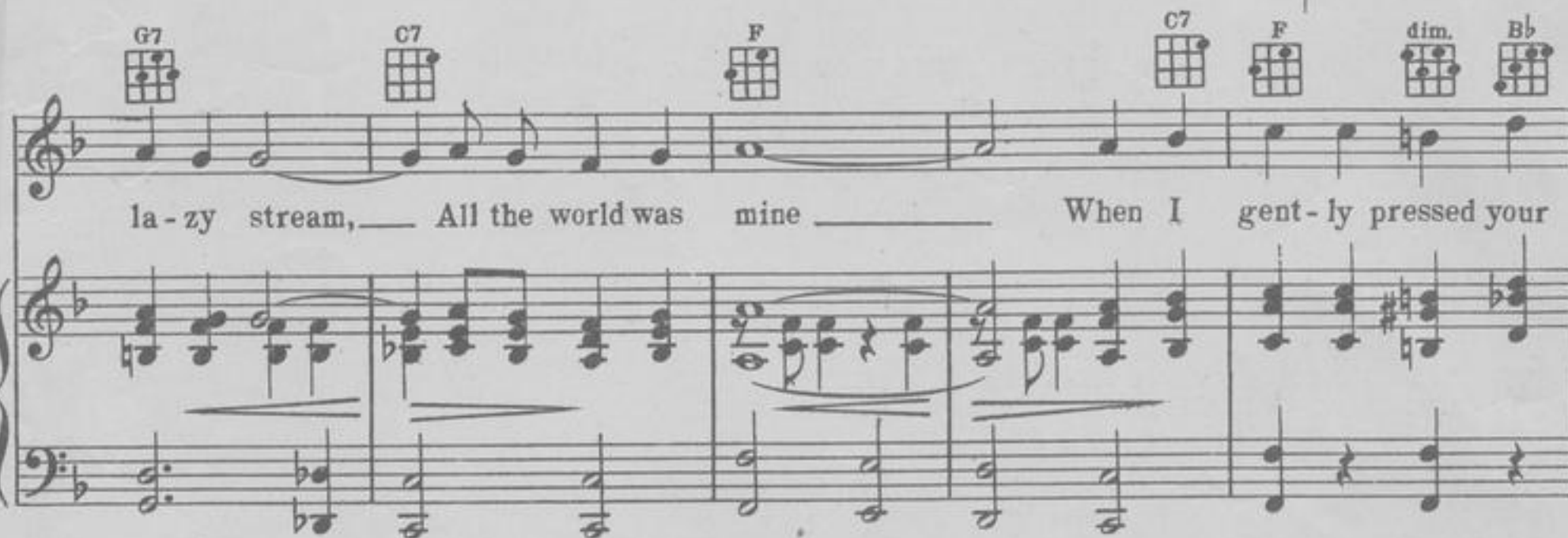


Words and Music by
BUD COOPER, NICK LUCAS
and SAM H. STEPT

Chorus



When I told you of my love — Un-der star-lit skies a - bove, Be-side a



la - zy stream, — All the world was mine — — — — — When I gent - ly pressed your



hand — You just seem'd to un-der-stand, Be-side a la - zy stream — All the world was

Copyright MCMXXVIII by Sherman, Clay & Co., San Francisco
International Copyright Secured and Reserved
Keith, Prowse & Co. Ltd., London, W.1. — Allan's Proprietary, Ltd., Melbourne, Australia

PUBLISHED BY

Sherman,  & Co.

SAN FRANCISCO

Little Mother

3

Tune Ukulele
or Banjulele Banjo
A D F# B
Put Capo on 1st fret

By ERNO RAPEE and
LEW POLLACK

Valse moderato

Piano introduction in 3/4 time, key of B-flat major. The music features a gentle, flowing melody in the right hand and a simple bass line in the left hand, characteristic of a waltz.

Ukulele Arr. by MAY SINGHI BREEN
"The Ukulele Lady" VOICE

First system of vocal and piano accompaniment. The vocal line begins with the lyrics: "When the day is done the Lit - tle Moth - er - dear, it's". The piano accompaniment continues from the introduction.

Second system of vocal and piano accompaniment. The vocal line continues with the lyrics: "set - ting sun sinks in - to a sky of blue There's a vi - sion of The ve - ry clear What you've done thru all these years Yet it's splen - did too To".

Third system of vocal and piano accompaniment. The vocal line concludes with the lyrics: "one I love Lit - tle Moth - er dear I mean you I can see a trace in think that you Can still wear a smile thru your tears Ev - 'ry night I pray, there'll".

your sweet face Of the one who un - der - stands And the
 come a day When I gaze on all your charms Lit - tle

work you've known is clear - ly shown By the wrin - kles in your toil worn hands
 Moth - er mine just once a - gain Let me nes - tle close - ly in your arms

rit.

CHORUS

Lit - tle Moth - er Moth - er mine, There's no oth - er

p - mf

Moth - er mine, Al - though I know that we are far a - part,

ad lib.

No one can take you dear, out of my heart, Lit-tle Moth-er

You're di - vine, Keep on smil-ing all the time

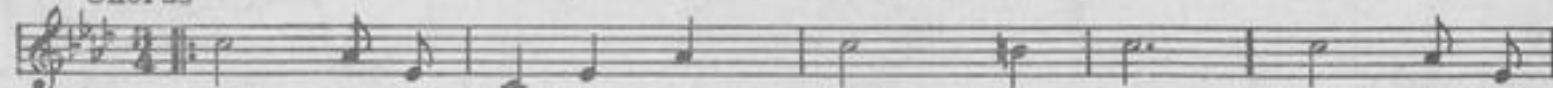
I pray that "He," spares you for me — Lit-tle Moth-er Moth-er

mine. Moth-er Moth-er - mine.



PALS OF LONG AGO

Chorus



Where are you now, Pals of long a - go, Friends that were

Copyright MCMXXVII by Sherman, Clay & Co., San Francisco.

IF I SHOULD LOSE YOU

Ballad Fox Trot Hit with an appeal.

Chorus

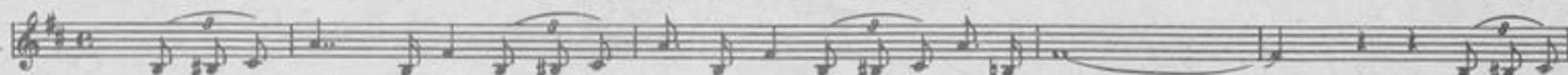


If I should lose you — If ev-er I lose you, — Where could I wan - der, — what could I do? —

Copyright MCMXXVII by Sherman, Clay & Co., San Francisco.

DOLL DANCE

Fox Trot Hit



What a pe - cul - iar tune, Thrill-ing me night and noon, What a pe - cul - iar tune. — Has such a

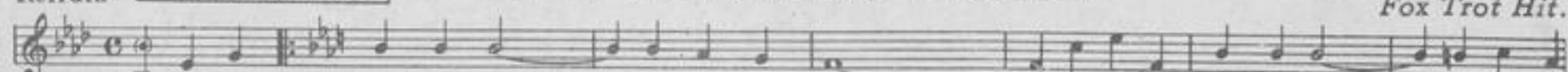
Copyright MCMXXVII by Sherman, Clay & Co., San Francisco.

THE WINDING TRAIL

Melodious Fox Trot Hit.

Refrain

Melody of "Old Refrain"
Published by Special Permission of
Carl Fischer Inc., New York



I'm on the wind - ing trail — to home sweet home — I'm on the home - ward road — no more to

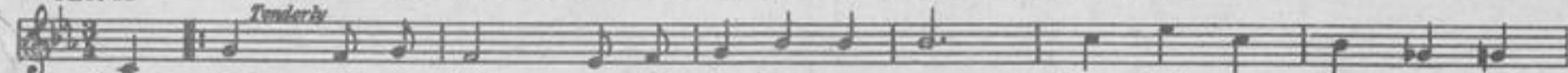
Copyright MCMXXVII by Sherman, Clay & Co., San Francisco.

SOMEBODY LIED ABOUT ME

Waltz Ballad.

Chorus

Tenderly



When some - bod - y told you that I've been un - true, Some - bod - y lied a - bout

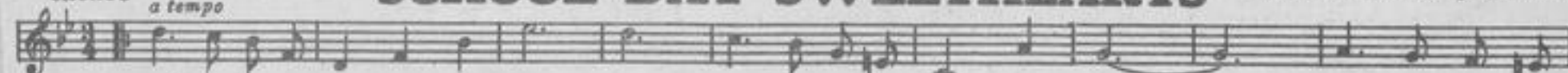
Copyright MCMXXVII by Sherman, Clay & Co., San Francisco.

SCHOOL DAY SWEETHEARTS

A favorite everywhere.

CHORUS

a tempo



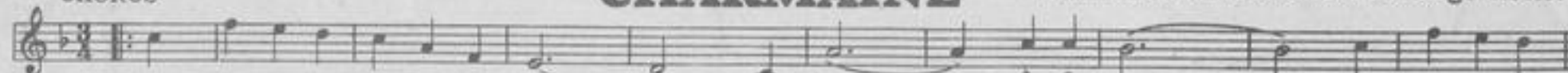
Can't we be the same school-day sweet - hearts? Let us wan - der back once more, — Thru the lit - tle

Copyright MCMXXVIII by Sherman, Clay & Co., San Francisco.

CHARMAINE

Waltz Hit with Ukulele arrangement.

CHORUS



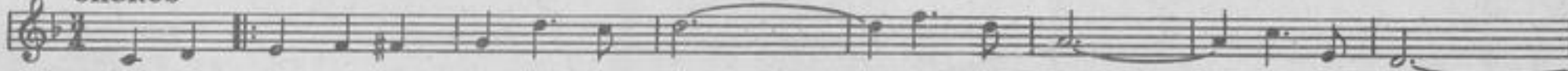
I won - der why you keep me wait - ing, Char - maine — cries in vain, — I won - der when

Copyright 1926 by BELWIN, Inc., N.Y.C.
Copyright assigned 1927 to Sherman, Clay & Co., San Francisco.

DIANE

Melodious Waltz Hit.

CHORUS



"I'm in Heav - en when I see you smile — Smile for me — my Di - ane —

Copyright MCMXXVII by Sherman, Clay & Co., San Francisco.

DO YOU LOVE ME?

Fox Trot Ballad with a punch.

Chorus *expressively but in strict time*

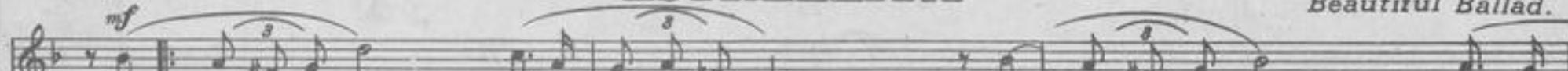


Do you love me — when skies are gray? — Ev - en tho' I'm — so far a - way? —

Copyright MCMXXVII by Sherman, Clay & Co., San Francisco.

ESTRELLITA

Beautiful Ballad.



Oh shine on to - night In your pa - lace a - bove Your sil - ver - y light Leads me
Tu e - res es - tre lla mi fa - ro de a - mor Tu sa - bes que pron - to he

Copyright MCMXXVII by Sherman, Clay & Co., San Francisco.

Copies for sale
wherever music is sold.

PUBLISHED BY

Sherman,  & Co.

SAN FRANCISCO

These numbers can also
be had for your phonograph
and player piano.