

The University of Maine

DigitalCommons@UMaine

---

Vocal Popular Sheet Music Collection

Public domain (may be downloaded in full)

---

1928

## Avalon Town

Nacio Herb Brown

*Composer*

Grant Clarke

*Lyricist*

Follow this and additional works at: <https://digitalcommons.library.umaine.edu/mmb-vp>

---

### Recommended Citation

Brown, Nacio Herb and Clarke, Grant, "Avalon Town" (1928). *Vocal Popular Sheet Music Collection*. Score 6511.

<https://digitalcommons.library.umaine.edu/mmb-vp/6511>

This Book is brought to you for free and open access by DigitalCommons@UMaine. It has been accepted for inclusion in Vocal Popular Sheet Music Collection by an authorized administrator of DigitalCommons@UMaine. For more information, please contact [um.library.technical.services@maine.edu](mailto:um.library.technical.services@maine.edu).

# AVALON TOWN

*Lyric by*   
**GRANT CLARKE**

*Music by*   
**NACIO HERB BROWN**  
*Writer of "Doll Dance"*

WITH UKULELE ARRANGEMENT



**Sherman,  & Co.**  
SAN FRANCISCO

**JESSE STAFFORD**  
Exclusive Brunswick Recording Orchestra

Vp. 007645

1928

Ava

MADE IN  
U.S.A.  
GRIFFITH

# LONELINESS

Tempo di Valse

Tune Like  
Bb Eb G C

By LEW POLLACK  
and SIDNEY CLARE

Refrain (with expression) dreamily

Why am I, oh so blue, Why do I long for you?

*p f*

It's on - ly lone - li - ness, on - ly lone - li - ness.

I should be full of cheer, but with - out you here

Copyright MCMXXVIII by Sherman, Clay & Co., San Francisco  
International Copyright Secured and Reserved  
Keith, Prowse & Co. Ltd., London, W.C.1.—Allan's Proprietary, Ltd., Melbourne, Australia

PUBLISHED BY

Sherman, Clay & Co.

SAN FRANCISCO

Bagaduce Music  
Lending Library

Blue Hill, Maine

755

# AVALON TOWN

3

Lyrics by  
GRANT CLARKE

Tune like as follows:

G C E A  
[ ] [ ] [ ] [ ]

Music by  
NACIO HERB BROWN

**Moderato**

Piano introduction in G major, 4/4 time. The melody is in the right hand, and the bass line is in the left hand. The tempo is Moderato. The introduction consists of 8 measures.

Think of a Ci - ty, Close by a pret - ty bay,  
A - mong the foun - tains, A - top the moun - tains there,

Piano accompaniment for the first verse. The melody is in the right hand, and the bass line is in the left hand. The tempo is Moderato. The accompaniment consists of 8 measures.

Set in an Is - land, That seems to smile and say,  
Is na - ture's pow - er, In ev - 'ry flow - er rare.

Piano accompaniment for the second verse. The melody is in the right hand, and the bass line is in the left hand. The tempo is Moderato. The accompaniment consists of 8 measures.

Bring all your trou - bles here, They will be bub - bles here - af - ter  
Brook - lets are whis - per - ing, And as you're lis - ten - ing to them

Piano accompaniment for the third verse. The melody is in the right hand, and the bass line is in the left hand. The tempo is Moderato. The accompaniment consists of 8 measures.







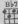



So ex-qui-site yet I can't pic-ture it to \_\_\_\_\_ you.  
 Cer-tain peace-ful-ness Speaks of rest-ful-ness to \_\_\_\_\_ you.

Chorus     

Think of an eve-ning in June, Un-der a crys-tal like moon,

*mp-f*

Think of an old Span-ish tune, You're in Av-a-lon Town.

Clos-ing your eyes for a while Pic-ture a tro-pi-cal Isle,

**Bb7** **Bb** **G**

Stud-ded with flow - ers that smile, You're in Av - a-lon Town. Ro - mance

**D7** **G** **D7** **G**

lin-gers thru ev-ry hour \_\_\_\_\_ Ro - mance bec-kons with all her pow - er to

**Bb7** **Bb** **C7** **Fm**

you; Think a-bout old Cap-tain Kid, Think of the chest that he hid,

**Bb7** **Bb** **Bb**

Dream that you've op - ened the lid, You're in Av - a-lon Town. \_\_\_\_\_ Town \_\_\_\_\_

# LONELINESS

Refrain (with expression) *dreamily*



Why am I, oh so blue, Why do I long for you? It's on - ly love - li - ness,

Copyright MCMXXVII by Sherman, Clay & Co., San Francisco

# AVALON TOWN

Balled Fox Trot Hit  
with an appeal.

Chorus



Think of an eve - ning in June, Un - der a crys - tal like moon, Think of an old Span - ish town, You're in Av - a - lon Town.

Copyright MCMXXVII by Sherman, Clay & Co., San Francisco

# DOLL DANCE

A favorite everywhere.



What a pe - cul - iar tune, Thrill - ing me night and soon, What a pe - cul - iar tune, Has such a

Copyright MCMXXVII by Sherman, Clay & Co., San Francisco

# RAG DOLL

Fox Trot Hit



There is a mem - o - ry, ev - er re - call - ing to me, My lit - tle ragged - y doll,

Copyright MCMXXVIII by Sherman, Clay & Co., San Francisco

# LITTLE MOTHER

Melodious Waltz Hit.



Lit - tle Moth - er Moth - er - mine! There's no oth - er Moth - er mine Al - though I

Copyright 1928 by Sherman, Clay & Co., San Francisco

# I'M WRITING YOU THIS LITTLE MELODY

Melodious  
Fox Trot Hit.



I'm writ - ing you this lit - tle mel - o - dy To make our dreams come true

Copyright MCMXXVIII by Sherman, Clay & Co., San Francisco

REFRAIN

# TU SAIS (YOU KNOW)

Tango Fox Trot Hit



You know my mur - mured words so ten - der, Mean love that's ev - er true,

Copyright Inactivated MCMXXVIII by Sherman, Clay & Co., San Francisco

# DREAM HOUSE

Melodious Fox Trot Hit.

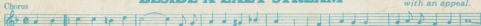


I have built a Dream House On - ly lit - tle dream house Nap - pi -

Copyright MCMXXVI by Sherman, Clay & Co., San Francisco

# BESIDE A LAZY STREAM

Balled Fox Trot Hit  
with an appeal.

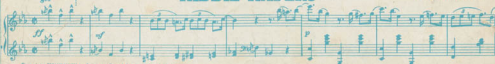


When I told you of my love Un - der star - lit skies a - bove, Be - side a la - zy stream, All the world was mine

Copyright 1928 by Sherman, Clay & Co., San Francisco

# KIDDIE KAPERS

Piano Novette



Copyright MCMXXVIII by Sherman, Clay & Co., San Francisco

Copies for sale  
wherever music is sold.

Sherman, Clay & Co.

SAN FRANCISCO

These numbers can also  
be had for your phonograph  
and player piano.