

The University of Maine

DigitalCommons@UMaine

---

Vocal Popular Sheet Music Collection

Public domain (may be downloaded in full)

---

1928

## Laugh! Clown! Laugh!

Ted Fiorito

*Composer*

Al Lewis

*Lyricist*

Young

*Lyricist*

Follow this and additional works at: <https://digitalcommons.library.umaine.edu/mmb-vp>

---

### Recommended Citation

Fiorito, Ted; Lewis, Al; and Young, "Laugh! Clown! Laugh!" (1928). *Vocal Popular Sheet Music Collection*. Score 6447.

<https://digitalcommons.library.umaine.edu/mmb-vp/6447>

This Book is brought to you for free and open access by DigitalCommons@UMaine. It has been accepted for inclusion in Vocal Popular Sheet Music Collection by an authorized administrator of DigitalCommons@UMaine. For more information, please contact [um.library.technical.services@maine.edu](mailto:um.library.technical.services@maine.edu).

# LAUGH CLOWN LAUGH

Lyric by  
**Lewis and Young**  
Music by  
**Jed Fiorito**

Song  
with Ukulele Arrangement

THEME SONG of Metro-Goldwyn-Mayer Production **LAUGH-CLOWN-LAUGH** Starring **LON CHANEY** Directed by **Herbert Brenon.**



Bagaduce Music  
Lending Library  
Blue Hill, Maine  
Donor: 678

Vp. 003066  
1928  
LAU

Remick Music Corp.  
219 W. 46<sup>th</sup> ST., New York

MADE IN U.S.A.



# LAUGH! CLOWN! LAUGH!

## SONG

Ukulele in D  
Tune Uke thus G C E A  
(C Tuning)

when played with Piano. (Tenor Banjo, Mandola,  
Guitar etc. play chords marked over diagrams.)

Lyric by  
**LEWIS & YOUNG**

Music by  
**TED FIORITO**

*Authors' Note:* In answer to many requests of the public, the recitation has been added to the copy on the back page.

Respectfully, **THE AUTHORS**

Valse Moderato

PIANO

The piano introduction is in 3/4 time, marked 'Valse Moderato'. It consists of two staves: a treble staff with a melody starting on a G# and a bass staff with a simple accompaniment. The first measure has a forte (f) dynamic. The melody features a triplet of eighth notes in the second measure and a half note in the third measure. The piece concludes with a repeat sign.

This system shows the piano accompaniment for the first system of the song. It includes a treble staff with a melody and a bass staff with chords and a bass line. The dynamics range from piano (p) to mezzo-piano (mp). The piece ends with a repeat sign.

VOICE

(Am) (B7) (F7) (E7)

Life is a play and we all play a part The  
Life is a joke and the laugh is on us We

The vocal line is written in a treble clef with lyrics underneath. The piano accompaniment is in a treble and bass clef. Chord diagrams for Am, B7, F7, and E7 are provided above the vocal line. The piano accompaniment includes a melody in the treble staff and chords in the bass staff. Dynamics include piano (p) and mezzo-piano (mp).

(Am) (G7) (C) (E7) (Am)

lov - er the dream - er the clown The dream - er and  
grumb - le we sor - row we pine \_\_\_\_\_ We all know that

(B7) (F7) (E7) (Am) (G7)

lov - er are al - ways in tears The clown spreads sun - shine a -  
laugh - ter is good for the soul A smile's a real wel - come

(C) (Am) (Em) (G+5) (Dm)

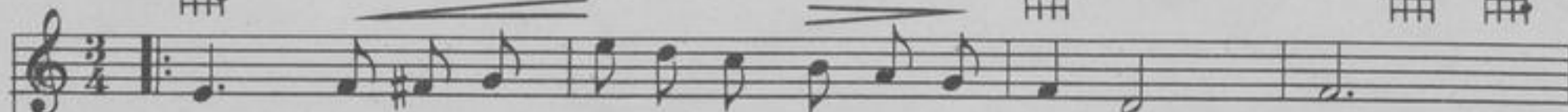
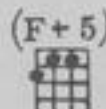
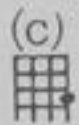
- round \_\_\_\_\_ The life with a smile is the life worth  
sign \_\_\_\_\_ So why don't we grin till that heart with -

(Am) (C7) (B7) (D7) (B7) (E7) (G7) (G+5)

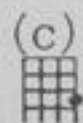
while So clown till the cur - tain comes down  
- in Says "this is the road to sun - shine"

*poco ritard.* *rall.*

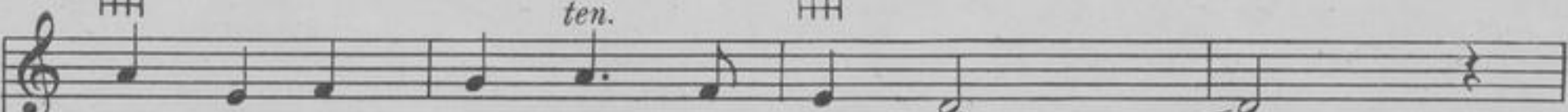
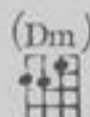
4 CHORUS



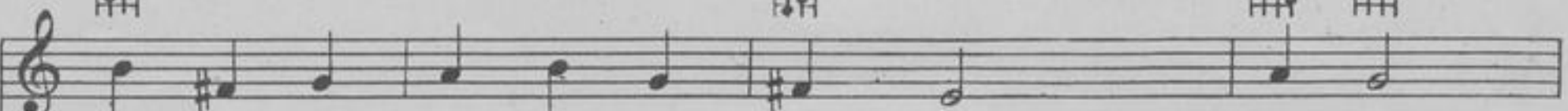
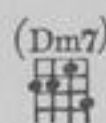
E - ven tho'you're on - ly make be - liev - ing Laugh!Clown! Laugh!



E - ven tho' some - thing in - side is griev - ing Laugh!Clown! Laugh!



Don't let your heart grow too mel - low



Just be a real Pun - chi - nel - lo fel - low



(C) (G7) (F+5) (Fm)

You're sup-posed to bright-en up a place and Laugh! Clown! Laugh!

(G7) (C) (E7)

Paint a lot of smiles a-round your face and Laugh Clown don't frown

(A7) (Dm) *poco sosten.*

(Dont let the world know your sor - row) Be a pa - gli - ac - cio  
 (Jest in your Ves - ti la - giub - ba)

(D7) (G7) (C) (G+5) (C)

Laugh! Clown! Laugh! Laugh!

RECITATION  
LAUGH, CLOWN, LAUGH

By LEWIS & YOUNG

*Authors' Note: First 16 lines fit "Viesta la Guibba." Last 7 lines fit the last 16 bars of chorus of "Laugh, Clown, Laugh." The last line is sung.*

*Respectfully, The Authors*

- 1 The World is a masquerade party
- 2 And we all have our own mask to wear;
- 3 The rich man pretends he is happy
- 4 And the pauper pretends he don't care.
- 5 But underneath all these false faces
- 6 The comedy doesn't go far;
- 7 At night when we look in the mirror
- 8 We see ourselves just as we are.
- 9 But aren't we all of us actors?
- 10 We're all of us part of a show,
- 11 We appear on the scene without asking
- 12 And we leave without wanting to go.
- 13 I played the part of a lover—
- 14 To others my song may have charms,
- 15 But the one that keeps my heart singing
- 16 Is a million miles from my arms.

- 1 My mask is all worn out with tear drops,
- 2 At night when it's laid on the shelf;
- 3 I may make the World think I'm merry,
- 4 But I can't hide the truth from myself
- 5 No matter how much it may hurt.
- 6 I must keep on acting, acting, acting,
- 7 Just like Pagliacci - - Laugh, clown, laugh!

*Copyright 1928, Remick Music Corp., New York, Los Angeles*