

1979

Annual Report of the Municipal Officers of the Town of Carthage For The Year 1979

Carthage (Me.)

Follow this and additional works at: <https://digitalcommons.library.umaine.edu/towndocs>

Repository Citation

Carthage (Me.), "Annual Report of the Municipal Officers of the Town of Carthage For The Year 1979" (1979). *Maine Town Documents*. 6020.

<https://digitalcommons.library.umaine.edu/towndocs/6020>

This Report is brought to you for free and open access by DigitalCommons@UMaine. It has been accepted for inclusion in Maine Town Documents by an authorized administrator of DigitalCommons@UMaine. For more information, please contact um.library.technical.services@maine.edu.

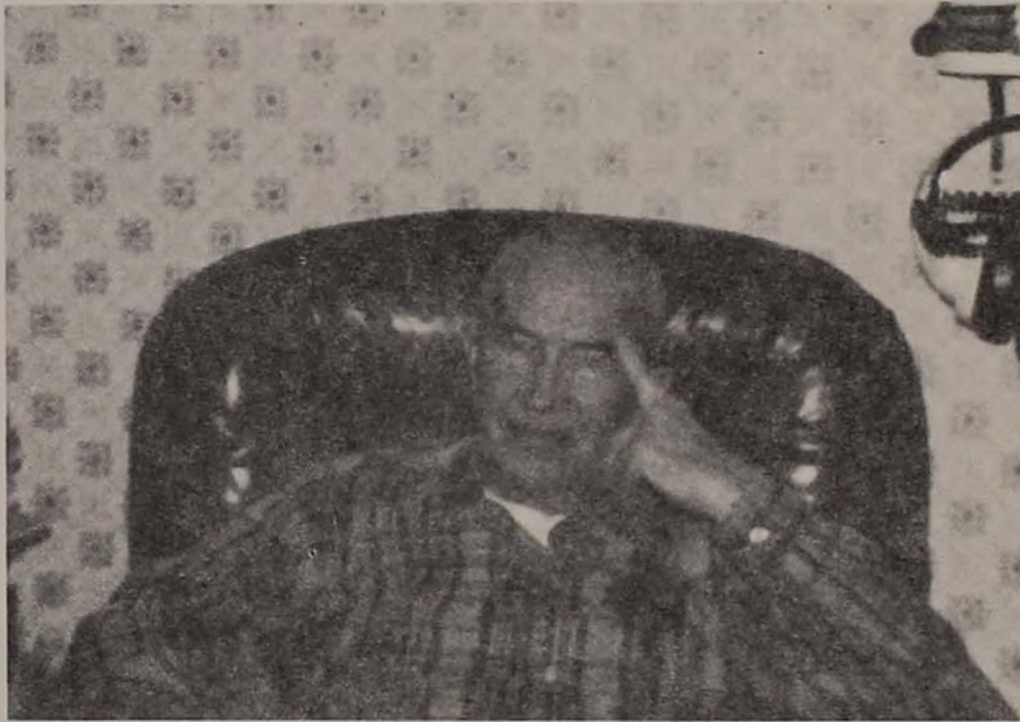
**Annual Report
of the
Municipal Officers**

of the

**TOWN OF
CARTHAGE
MAINE**

For the Year 1979

**THE TOWN WOULD LIKE TO DEDICATE
THE TOWN REPORT THIS YEAR TO
MR. HOLLIS SWETT**



Hollis was born July 17th, 1902, in Dixfield, Maine. With his wife, Harriett, he has lived on the former Myron Hanson place in Carthage for the past 21 years.

He was selectman for a period of three years, and really enjoyed working for the town. He worked for the former Oxford Paper Company for 43 years, and decided to retire in 1966.

He spends some time fishing and hunting, and he cuts his own firewood and also makes maple syrup each spring. He also raises a large garden each summer on their farm.

He worked with the Boy Scouts and the Carthage Boys Club for several years.

The town appreciates the dedication Hollis has shown to each and every task he has undertaken.

TOWN OFFICERS

Clerk

Pearl Hutchinson

Selectmen, Assessors and Overseers of the Poor

Merwin Spaulding

Kermit Houghton

Jan Hutchinson

Treasurer

Dorothy Mason

Board of Directors S.A.D. #21

Deborah Swett

Brenda McCarthy

Linda Dailey

Superintendent of Schools

Carroll W. Howes

Tax Collector

Deborah Swett

Constable

Peter Houghton

Health Officer

Carole Spaulding

Civil Defense Director

Melvin Smith

Budget Committee

Roland Skidgell
Charles Houghton
Edmond Berry
William Skidgell

Leo Carrier
Douglas Geis
Minot Flagg
Conrid Houghton, Jr.

Representative to the Legislature

John H. Rollins

East Dixfield, Maine 04227

Tel. 645-2844

Legislative Address:
House of Representatives
State House
Augusta, Maine 04330
Telephone 289-2866

TOWN WARRANT

COUNTY OF FRANKLIN, ss.

To Peter Houghton, a constable in the Town of Carthage in said County,

Greetings:

In the name of the State of Maine, you are requested to notify and warn inhabitants of the Town of Carthage, qualified by law to vote in town affairs, to assemble at the Grange Hall, Berry Mills, in said Town on the 3rd day of March, A.D. 1980 at 7:00 PM to act on the following articles, to wit:

Article 1: To choose a Moderator to preside at said meeting.

Article 2: To see if the Town will vote to elect all Town Officers by nomination from the floor.

Article 3: To choose a Town Clerk for the ensuing year.

Article 4: To choose all necessary Town Officers for the ensuing year.

Article 5: To see if the Town will vote to authorize the Selectmen to arrange for the Plowing and Sanding of Winter Roads to the best interest of the Town.

Recommended: Yes

Article 6: To see if the Town will vote to leave the care of Town Roads in the hands of the selectmen.

Recommended: Yes

Article 7: To see if the Town will vote to fix a date when taxes are due and payable.

Recommended: Yes

Article 8: To see if the Town will vote to charge either 14% or 16% interest beginning December the 1st next on all remaining unpaid taxes.

Recommended: Yes

Article 9: To see what rate per cent and final date to be allowed for discount of taxes on the 1980 commitment.

Recommended: Yes, 3%, August 20th

Article 10: To see in the Town will vote to authorize the selectmen on behalf of the town to sell and dispose of any real estate acquired by the town for non-payment of taxes thereon any such terms as they deem advisable and execute quit claim deeds for such property.

Recommended: Yes

Article 11: To see if the Town will vote to authorize the Town treasurer to sell and assign unmatured tax mortgage liens for the amount unpaid and the cost and interest.

Recommended: Yes

Article 12: To see if the Town will vote to authorize the Town treasurer with approval of the selectmen to hire sums of money as may be necessary to pay town taxes and to issue and negotiate the note or notes of the town so borrowed to an amount not to exceed in the aggregate of the total levy of the preceding municipal year, as temporary loans.

Recommended: Yes

Article 13: To see if the Town will vote to have printed in the town report the true list of every tax payer's account.

Recommended: Yes

Article 14: To see if the Town will vote to permit any business not included with the exemptions listed in the public laws of 1961 chapter 362 to remain open for business on the day set forth in said chapter.

Recommended: Yes

Article 15: To see if the Town will vote to have the selectmen appoint a budget committee consisting of eight citizens of this Town.

Recommended: Yes

Article 16: To see if the Town will vote to raise and appropriate an increase in the selectmen's salaries. First Selectmen's increase \$400.00, Second Selectmen's increase \$50.00 and the Third Selectmen's increase \$50.00. This will be funded from wages and salaries.

Recommended: Yes

Article 17: To see what sum the Town will raise and appropriate for wages and salaries of Town Officials. \$6,000.00.

Recommended: Yes

Article 18: To see what sum the Town will raise and appropriate for Winter Roads, culverts, and repair of Summer roads and bridges. \$4,500.00

Recommended: Yes

Article 19: To see what sum the Town will vote to raise and appropriate for the purpose of Plowing and Sanding Winter Roads in the Town of Carthage. From excise tax \$10,627.99. Raise \$10,000.00.

Recommended: Yes

Article 20: To see what sum the Town will vote to raise and appropriate for the care of the poor. \$200.00.

Recommended: Yes

Article 21: To see what sum the Town will vote to raise and appropriate for current expenses. \$3,500.00.

Recommended: Yes

Article 22: To see what sum the Town will vote to raise and appropriate for office supplies and equipment and repairs. \$600.00 (from surplus).

Recommended: Yes

Article 23: To see what sum the Town will vote to raise and appropriate for discount of taxes. \$800.00.

Recommended: Yes

Article 24: To see what sum of money the Town will vote to raise and appropriate for the South Carthage Fire Company. \$1,600.00 (from surplus), for the Carthage Fire Company - \$1,700.00, for Insurance - \$200.00.

Recommended: Yes

Article 25: To see what sum the Town will vote to raise and appropriate for cutting bushes on Town roads. \$100.00.

Recommended: Yes

Article 26: To see what sum the Town will vote to raise and appropriate toward reconstruction and tarring of town roads and bridges. \$4,000.00

Recommended: Yes

Article 26: To see what sum the Town will vote to raise and appropriate toward reconstruction and tarring of town roads and bridges. \$4,000.00.

Recommended: Yes

Article 27: To see what sum the Town will vote to raise and appropriate for Civil Emergency Preparedness.

Recommended: None

Article 28: To see what sum the Town will vote to raise and appropriate for the care of cemeteries. \$100.00

Recommended: Yes

Article 29: To see what sum the Town will vote to raise and appropriate for the benefit of the Rumford Community Hospital.

Recommended: None

Article 30: To see what sum the Town will vote to raise and appropriate for the necessary bonds of Town Officers. \$60.00.

Recommended: Yes

Article 31: To see if the Town will vote to raise and appropriate the sum of \$370.00 in order to participate in the Tri-County Mental Health Services, Inc.

Recommended: No

Article 32: To see if the Town will vote to raise and appropriate money to support the Dixfield area Y.M.C.A.

Recommended:

Article 33. To see if the Town will raise and appropriate the sum of \$237.20 being dues to the Maine Municipal Association.

Recommended: Yes

Article 34: To see if the Town will vote to appoint a committee of citizens to work on replacing Grover Bridge, with funds to be taken from the Grover Bridge account, with a \$500.00 limit and to be approved by the selectmen.

Recommended: Yes

Article 35: To see if the Town will vote to raise and appropriate the sum of \$1,000.00 necessary to cover the street lighting services for the fiscal year.

Recommended: Yes

Article 36: To see what sum the Town will vote to raise and appropriate for State Aid Construction in addition to the amounts regularly raised for the care of ways, highways and bridges under the provision title 23, M.R.S. Sections 1101, 1103, or 1104. \$1,200.00.

Recommended: Yes

Article 37: To see if the Town will vote to grant Webb River Valley Snowmobile Club \$474.00.

Recommended: Yes

Article 38: To see if the Town will vote to raise and appropriate the sum of \$100.00 to support Channel 10's public television service.

Recommended: No

Article 39: To see if the Town will vote to raise and appropriate the sum of \$ to provide ambulance service in the Town of Carthage.

Recommended:

Article 40: To see if the Town will vote to appropriate \$ from surplus to be used for sanitation.

Recommended: None

Article 41: To see if the Town will vote to appropriate the sum of \$178.00 for the Androscoggin Home Health Service, Inc.

Recommended: No

Article 42: To see if the Town will vote to raise and appropriate \$100.00 for the Western Older Citizens Council, Inc.

Recommended: No

Article 43: To see what sum the Town will vote to appropriate for the Grover Bridge Fund. \$3,734.57 (from Revenue Sharing).

Recommended: Yes

Article 44: To see if the Town will appropriate \$3,000.00 from Federal Revenue Sharing to the Fire Truck Reserve fund.

Recommended: Yes

Article 45: To see if the Town will vote to use monies from overlay to apply on overdrawn accounts.

Recommended: Yes

Article 46: To see if the Town will vote to authorize the selectmen at their discretion to lapse unused departmental balances to surplus.

Recommended: Yes

Article 47: To see if the Town would raise and appropriate the sum of \$200.00 for the American Red Cross, Androscoggin Valley Chapter.

Recommended: No

Article 48: To see if the Town would vote to raise and appropriate the sum of \$2,000.00 (from surplus) for a fund to resurface the River Road.

Recommended: Yes

Given under our hands at Carthage, this 6th day of February, A.D. 1980.

MERWIN SPAULDING
KERMIT HOUGHTON
JAN HUTCHINSON

Selectmen of Carthage

The registrar will be at the Grange Hall one half hour before Town meeting for the purpose of registration of new voters.

REPORT OF TOWN CLERK
For the year ending December 31st, 1979

Dog Licenses Issued

54 Males	\$ 81.00
28 Females	154.00
24 Spayed Females	36.00
2 Kennels	<u>22.00</u>
	\$ 293.00

Vital Statistics

Births	4
Deaths	4
Marriages	5

Respectfully submitted,

Pearl Hutchinson
Town Clerk

REPORT OF HEALTH OFFICER
For the year ending December 31, 1979

There were no communicable diseases reported during the year.

Respectfully submitted,

Carole Spaulding
Local Health Officer

**ANNUAL REPORT OF THE
FRANKLIN COUNTY COMMUNITY ACTION COUNCIL
TO THE
TOWNS OF FRANKLIN COUNTY**

For all of us, 1979 marked a year filled with questions and uncertainties. Questions over what services should be retained vs. those that should be cut back in view of the increased cost of doing business and the increasing reluctance of taxpayers to pay for questionable services. The uncertainty prompted by the cost and availability of previously taken for granted fuel has forced all of us to reexamine the way we do things. For the F.C.C.A.C., the issue of energy was and continues to be of paramount importance, since a significant portion of the Agency's services are directed at lessening the economic burden of a more expensive fuel supply through financial assistance, education and direct service education to residents of your community.

Through last year's Fuel Assistance Program, this Agency aided 481 county households containing over 800 individuals. Fifty-one percent of these households were elderly. Through this Agency's Western Maine Energy Center, individuals and groups were provided free information and assistance in ways to reduce personal energy consumption. A personal energy fashion show, entitled "The Layered Look" stressing the importance of appropriate indoor dress at lower temperatures, was developed for and presented to county-wide senior citizens groups. The Agency's Mobile Energy Education Unit was inaugurated at the Franklin County Fair and has since made trips to several county communities spreading energy saving messages.

The Weatherization program did its part for energy savings while becoming the most productive program in the state, winterizing 191 homes in 17 different communities. One hundred and eleven of these homes belonged to elderly households. A total of 565 individuals benefited from this program.

Through the Housing program, emergency home repairs were performed on 56 dwellings in 14 communities, providing safe chimneys, sound roofs and overall general repairs. Through the Section 8 Existing Housing Program 31 apartment units were rented to elderly and low income families. In addition, the Housing Program was instrumental in assisting 21 families in securing FmHA loans and grants. As a planning activity the Housing Office assisted the towns of Phillips, Rangeley and Jay in completing Community Development Block Grant Program applications, all

of which received funding approval.

As the Comprehensive Deliverer of CETA services to the County, the Agency experienced substantial growth providing expanded services for job training. Youth continued to play an important role in job related services provided by the Agency. The Summer Youth Employment Program provided county-wide employment for 112 youths in productive community jobs. During the regular school year, 21 students were enrolled in the in-school job program while 11 out of school youths received the benefit of job training. In cooperation with private enterprise, 156 residents around the county received on the job training, classroom training and work experience which led to full employment.

From an educational perspective, the Agency Head Start and Day Care Centers have continued to serve an expanded number of children. Through the centers located in Phillips, Rangeley, Farmington, and Jay, 75 children, including 10 handicapped, were enrolled. The program provided access to education, social services, psychological, medical and dental services, speech therapy and parenting skills.

The Day Care Program enrolled 71 children at the Sweatt-Winter Center in Farmington. An additional 41 children were enrolled in 20 licensed homes in 7 towns. Residents of 15 county towns utilized the combined services of the Center and Family Day Care homes.

The Agency's Family Planning Program served 377 county residents through its clinic in Farmington. In addition, the program provided Family Planning education to an additional 505 individuals in Franklin County.

The WIC Program continued to provide basic nutritious foods to pregnant women, nursing mothers and children under five years of age who met financial guidelines. In 1979, the program distributed 3,457 food packages through a system of vouchers. Most important, however, was nutrition education in the program delivered to each client on the benefits of balanced diets and good health habits.

Through the generosity of county residents, private enterprise, dedicated volunteers and CAP staff, the Agency continued to operate two very successful programs. The Clothing Center, located at the CAP Office in East Wilton, provided clothing free of charge for 1,217 individuals in Franklin County. The other program which lifts everyone's spirit, "Operation Santa Claus", operated in conjunction with WKTJ Radio, experienced its most successful year ever, serving 545 needy children in every Franklin

County town.

The Franklin County Community Action Council maintains the philosophy of "Helping People Help Themselves." Through your cooperation and support, we will continue to make this philosophy a reality.

The Franklin County Community Action Council is governed by a twenty-seven member Board comprised of citizens from nine county communities.

Respectfully submitted,

David S. Markochick
Executive Director

ANDROSCOGGIN HOME HEALTH SERVICES, INC.

**79 Main Street
Auburn, Maine 04210**

Annual Report—1979

Seven Carthage residents were served by the home care program during 1979. As a group, these patients received 150 visits by our professional and paraprofessional staff. By type, these visits consisted of skilled nursing care, 59; home health aide, 86; and homemaker service, 5. Visits are provided on a part time basis and in varying combinations based upon patient and family needs. While the program relates to a great variety of situations, a major benefit derives from the fact that home care frequently enables patients to be appropriately cared for at home rather than in an institutional setting. This is important to patients and to taxpayers.

Thanks to a combination of municipal financial support and federal and state grants which depend upon the availability of local "matching" money, we were able to subsidize a total of \$804 in services to Carthage residents. While a slight majority of home care visits was covered by Medicare, Medicaid, and private insurance, a significant amount of services was required by individuals who were either unable to pay, or could meet only a portion of the cost with out-of-pocket payments. We endeavor to serve all patients on the basis of need; our capacity to do so is determined by the availability of the aforementioned support.

We greatly appreciate the support of Carthage residents, not only in 1979, but throughout the decade.

Respectfully submitted,

Richard H. Hooper
Executive Director

SCHOOL ADMINISTRATIVE DISTRICT NO. 21

To the Board of Directors and Citizens of
School Administrative District No. 21:

School Administrative District No. 21 provides public education for the children in the three communities of Canton, Carthage, and Dixfield. The welfare of all boys and girls is the primary objective underlying all decisions of the Board of Directors. Each year the Superintendent and the Board of Directors prepare a budget for the operational and capital expenditures of the school district. The budget represents the amount of money that is necessary to operate the school district for a period of one year. The fiscal year for the district begins on July 1st and ends on June 30th.

The combined population of Canton, Carthage, and Dixfield is 3,312. The total student population based on 1979-80 figures is as follows:

	K	1	2	3	4	5	6	7	8	9	10	11	12
Canton	15	19	9	10	12	14	9	16	19	22	15	15	10
Carthage	5	10	9	7	10	16	15	7	12	12	13	6	5
Dixfield	<u>31</u>	<u>52</u>	<u>43</u>	<u>49</u>	<u>39</u>	<u>39</u>	<u>41</u>	<u>42</u>	<u>45</u>	<u>55</u>	<u>51</u>	<u>52</u>	<u>46</u>
TOTALS	51	81	61	66	61	69	65	65	76	89	79	73	61

1979 - 1980 SCHOOL YEAR HIGHLIGHTS

Middle School

Approval of funding for the District's Middle School by the State Board of Education was given on November 14, 1979. It is anticipated that construction bids will be awarded by the first of March and actual ground breaking will occur in April. Alonzo J. Harriman Associates are the architects for the project. Many diversified learning activities are part of the Middle School curriculum and will provide students with relevant educational experience.

Energy Conservation

The school district has been closely monitoring the use of electricity, fuel oil, and gasoline. Where feasible, maximum temperatures in the buildings have been established at 65 degrees during the day and 50 degrees at night.

Adult Education

The District's Adult Education Program is under the direction of Mrs. Sandra Tribou. A very comprehensive program has been planned for the next school year. Over seventy-five adults have taken advantage of the evening classes.

Career Education

The district received a Career Education grant for the present year and is applying for another grant next year. The money is being used to assist the District for the infusion of Career Education in the total school curriculum. Career Education seeks to prepare students, through awareness, exploration, decision making, preparation, entry, and advancement, to the world of work.

Curriculum Review

All aspects of the District's K-12 curriculum are under review. The purpose of the review is to assure students in our school system that a full and coordinated educative program is being offered. The review committee is first studying the area of math. A final report will be provided for the Board of Directors at the conclusion of the study.

Respectfully submitted,

Carroll W. Howes, Ed.D.
Superintendent of Schools

S.A.D. #21 PERSONNEL

BOARD OF DIRECTORS

Gladys Conant Secretary	Canton	Term expires 1980
Watson Clark, Jr. Chairperson	Canton	Term expires 1981
Georgia Kennett	Canton	Term expires 1980
Adelaide Ray	Canton	Term expires 1982
Linda Dailey	Carthage	Term expires 1982
Brenda McCarthy	Carthage	Term expires 1980
Deborah Swett	Carthage	Term expires 1981
Eugene Blaisdell Vice-Chairperson	Dixfield	Term expires 1982
Rebecca Collins	Dixfield	Term expires 1981
Clarice Hodges	Dixfield	Term expires 1981
Lorraine Holman	Dixfield	Term expires 1980
Marshall Holman	Dixfield	Term expires 1980
Sewell Weeks	Dixfield	Term expires 1980
Carol Ann Wing	Dixfield	Term expires 1982

CENTRAL OFFICE

Carroll W. Howes	Superintendent of Schools
Timothy W. Kelly	Elementary Supervisor
Bettina Clark	Business Secretary
Pamela Jensen	Superintendent's Secretary
Frances Frost	Offset Press Operator

DIRIGO HIGH SCHOOL

Linwood D. Sadler	Principal
John Baker	Guidance Director
Doryce Barron	Special Education
Richard Beedy	Physical Education
Patricia Conant	English
Dawn Farnham	English
Cleon Fletcher	Mathematics
Leo Houle	Life Science
Daniel Hylan	Social Science

Larry Jensen
Muriel Larrabee
Robert McLeod
Jeannine Murray
Charles Nielson
James Pulsifer
W. Frank Risell
Warren Robertson
Bruce Thompson
Sandra Tribou
Harold Watson
Margaret Welch
Charlotte Mesko
Sarah Drury
Sylvia Kelly

Business Education
English
Industrial Arts
Foreign Languages
English
Physical Science
Music
Asst. Principal & Industrial Arts
Mathematics
Home Economics
Social Studies
Business Education
Secretary
Guidance Secretary
Librarian Aide

DIXFIELD JUNIOR HIGH SCHOOL

Yvette Raymond	Grade 5
Bruce Buckingham	Grade 6
Margaret Emerson	Grade 6
Carrie Worcester	Principal and Grades 7 & 8
Rodney Gammon	Grades 7 & 8
Bradley Payne	Grades 7 & 8
Richard Cross	Grades 7 & 8
Patricia Jones	Grades 7 & 8
Bayla Beane	Music
Suzanne Duka	Special Education
Patricia Ellis	Special Education Aide
Nancy Edmond	School Nurse
Janice Noe	Part-time School Nurse
Lorraine Roberts	Reading Specialist
Annie Soda	Speech Therapist
Marjorie Johnson	Secretary

DIXFIELD ELEMENTARY SCHOOL

Margaret Pulkkinen	Kindergarten
Arlene Collins	Grade 1
Joyce Elliott	Grade 1
Wanda Howard	Grade 2
Pauline Welch	Grade 2
Miriam Ladd	Principal & Grade 3
Maureen Houle	Grade 3

Judith Coulthard	Grade 4
Catherine Weirich	Grade 4
Rebekah Clark	Special Education
Lori Smith	Special Education
Sandra Robinson	Secretary

CANTON CENTRAL SCHOOL

Bonnie Buckingham	Kindergarten
Ruth Marstaller	Grade 1
June Giambattista	Grades 2 & 3
Elizabeth Marston	Grades 4 & 5
Jane McCollister	Principal and Grades 6, 7 & 8
Michael Alvino	Grades 6, 7 & 8
John Dudley	Grades 6, 7 & 8
Doris Brown	Secretary

CARTHAGE ELEMENTARY SCHOOL

Frances Flick	Principal and Grades 2 & 3
James Morin	Kindergarten and Grade 1

CUSTODIANS/BUS DRIVERS

Alton Wing	Supervisor
Neri Cormier	Custodian/Bus Driver
Bernard Desjardin	Custodian
Daniel Hallock	Custodian/Bus Driver
Mary Hutchinson	Custodian/Bus Driver
Herschel Nash	Bus Driver
Raymond Robar	Custodian/Bus Driver
William Schuster	Custodian/Bus Driver
Daniel Smith	Custodian/Bus Driver
Ralph West	Bus Driver

SCHOOL NUTRITION PROGRAM

Brenda Adams	Food Service Supervisor
Evelyn Averill	Dirigo High School
Ruth Dailey	Canton Central School
Carol Gallant	Dixfield Junior High School
Maxine Moore	Dirigo High School
Louise Nash	Dirigo High School

Carol Rafuse
Shirley Strout
Jessie Wing

Dirigo High School
Canton Central School
Dirigo High School

AIDES

Dixfield Junior High School

Constance Beedy - Aide
Marlene Palmer - Assistant

Dixfield Elementary School

Marcia Leavitt - Assistant
Jane Martin - Aide

Canton Central School

Aurie Cox - Assistant

Carthage Elementary School

Minnie Blodgett - Aide

Complete List of Taxes Assessed to Residents in 1979

Alifieri Lee	336.56
Archibald, Minnie	209.00
Averill, George Sr.	565.40
Averill, George Jr.	57.99
Arsenault, Richard	220.00
Barnett, Thomas & Lois	341.00
Berry, Roger	313.50
Berry, Joe	59.62
Berry, Edmond	757.81
Berry, Raymond Sr.	193.60
Berry, Sidney	231.00
Benner, Philip	756.25
Biden, George	200.11
Blodgett, Nancy	276.36
Blodgett, Minnie	264.00
Blodgett, Ralph	22.00
Blouin, Larry & Simone	451.00
Bradbury, Lynda	282.24
Bradeen, Donald Sr.	970.15
Bowie, Bennie	518.65
Brown, Lillian	394.90
Brown, Elwin	807.99
Brown, Steven, (James Kennedy, Robert Keith, Phillip & Sandra Keith)	660.04
Burnham, Michael	155.54
Burnham, Susan	127.25
Carrier, Leo	995.37
Carrier, Michelle	26.95
Clark, Josiah	299.20
Davis, Lena	336.05
Dean, Thomas & Gina	539.95
Downs, George	363.00
Ellis, Ronald	139.72
Ellis, Kenneth & Mary	195.71
Ellis, Grace	275.00
Ellis, Fred	46.20
Flagg, Kenneth Sr. & Bernice	326.15
Dailey, Linda	397.80
Flagg, Asa	721.60
Gaudette, Dea	341.00
Giradin, George	155.65

Geis, Douglas	526.90
Gordon, Annabelle	142.21
Henry, Brian	167.11
Grohman, Joann	629.49
Gordon, Ethel	217.14
Hatch, Marion heirs of	255.75
Hammond, John	319.00
Harkness, Timothy & Sylvia	463.65
Houghton, Thelma B.	35.20
Houghton, Kermit & Thelma	168.08
Houghton, Conrid Jr. & Vicki	427.35
Houghton, Emeral & Mary	594.00
Houghton, Lawrence	284.35
Houghton, Donald	71.50
Houghton, Conrid Sr.	313.96
Holt, Richard & Grace	321.93
Houghton, Charles	955.02
Hill, Phillip	228.23
Hood, Alice	97.68
Hutchinson, Berry	125.40
Hutchinson, Jon	345.95
Hutchinson, Jan	283.80
Hutchinson, Lee & Elaine	195.25
Hutchinson, Isabelle	444.40
Hutchinson, Cecil	251.81
Hutchinson, Gary	214.08
Hutchinson, Arthur	422.95
Hutchinson, Wilhelmina	421.85
Hutchinson, Richard & Jeanine	83.34
Hutchinson, Stetson	362.89
Hutchinson, Dale	72.60
Hutchinson, Pearl	457.86
Jackson, Evangeline	72.60
Hutchinson, Frank III	620.51
Kuhn, Robert	594.48
Lewitt, Michael	59.40
Mason, George & Dorothy	603.90
Maillett, William & Sharon	539.00
McCarthy, Ronald	321.20
Morean, Harold	105.60
Noyes, Hurchial	732.05
Noyes, Herbert	130.68
Moody, Russell	93.50
Packard, Brenda	82.90

Packard, Arthur	85.80
Park, William & Josephine	174.81
Park, Edward & Donna	281.05
Pulk, Elizabeth	99.00
Robbins, Edith	99.00
Ruff, Norman & Eleanor	210.19
Skidgell, Helen	160.05
Skidgell, William	454.65
Skidgell, Roland	361.61
Smith, Melvin	182.76
Smith, Regionald & Mildred	286.42
Smith, Robert	134.20
Snell, John	385.00
Spaulding, Merwin & Carole	968.15
Stone, Alton	154.00
Stone, Oscar	68.20
Swett, Clayton Jr.	484.55
Swett, Douglas & Clayton	193.31
Swett, Douglas R.	200.13
Swett, Hollis & Harriett	515.24
Turner, June	304.70
Turner, Leo	414.70
Virgin, Ralph Jr.	189.20
Virgin, Ralph Sr.	279.40
Virgin, Ilene	246.40
Wade, Clifford	734.25
Walker, Harold	246.91
Walker, Gerald	187.00
Weston, Robert & Anita	442.75
White, Hurchial.	292.05
White, Elijah Sr.	328.35
White, Lyle R.	917.71
White, E. & W.	484.00
White, Wayne	468.60
Williamson, Galan & Nancy	1,161.71
Whittermore, Walter & Alice	147.40

Complete List of Taxes Assessed to Non-Residents in 1979

Andrews, James	195.47
Arsenault's Store	275.00
Ashley, Paul & Camilla	183.13
Averill, Lynn & Evelyn	129.38
Averill, Lester	34.10
Bickford, Anne	8.25
Barr, Harold	134.84
Basham, John & Barbara	26.95
Bates, Rowena & Everett	141.24
Belanger, Henry	138.12
Bertwell, Joanne	124.21
Blaisdell, Eugene	37.51
Boise Cascade	177.06
Boven, Eugene	198.37
Bradbury, Calvin	299.75
Calden, Harvey & Orman	91.08
Cantin, Leon	87.74
Carver, Robert	130.50
Carver, Harry heirs of	646.25
Carver, Donald & Raymond	211.75
Cappello, Paul	110.00
Central Maine Power	1,709.64
Charron, Evelyn	40.04
Chadbourne, Phillip	28.89
Clark, Nelson Barrie	69.19
Climens, Alfred	130.09
Collins, Donald Jr.	191.29
Dalyample, Jesse Jr.	27.50
Damon, Lewis & Charlotte	55.00
Diamond National	222.24
Dickson, Rachel	35.75
Dickson, Thomas Sr.	140.95
Dickson, Thomas Jr.	122.65
Donavon, John & Patricia	57.20
Dowd, Charles	173.25
Driscoll, Jack	28.60
Dufault, Nelson	24.20
Dunlay, John	33.00
Dupris, Jake & Andrew	82.50
Drury, Bernard & Warren	242.44
Dustin, Shelton	99.00

Essman, Russell	28.60
Emery, Gerry & Helen	80.52
Fish, James	68.75
Fish, Cameron	22.00
Feer, Michael	88.13
Flagg, Freda	96.25
Garneau, David & Beverly	24.20
Gallant, Robert	72.49
Gatchell, Edward L.	40.04
Gill, Erlon	101.42
Gilvery, John	33.97
Gordon, Charles & Marjorie	31.35
Grant, Nicholas Jr.	926.42
Harmon, George & Jeanette	63.10
Haines, Virgil	90.55
Green, Mary (trust)	2,737.97
Hall, Charles	159.98
Hallock, Helen	154.55
Hill, John & Lilly	31.35
Holmes, Bruce & Pia	134.75
Hunt, Alberta	191.58
Hutchinson, Viola	29.15
Hutchinson, Bradley	69.30
Jamison, Audrey	66.00
Jackson, Clifford	26.47
Johnson, Richard	255.20
Karvel, James & West, David	122.01
Kelly, Jack	110.44
Kellerman, Paul	228.73
Keith, James & Cheryl	16.50
Kingsbury, Carl	295.50
Knox, Donald	73.48
Koliche, Suzanne	136.62
LeBlanc, Rene & Geraldine	45.50
Libby, Clayton	26.95
Libby, James	16.21
Lowe, Harry	278.52
LaRochelle, Joseph	73.48
Lambert, Eugene	523.97
Mckellar, Michael & Sharon	20.61
MacIntire, Ronald	24.20
Marion, James & Mary	221.65
Masterman, Gladys	45.80
McDonald, John & Norma	63.80

Medeas, Richard & Jerome	144.41
Merrill, Forest	119.24
Millay, Robert & Rebecca	110.00
Mitchell, Clayton	66.00
Moore, Robert & Nila	28.60
Norcross, Malcolm Jr.	27.50
Nolet, William	147.95
Parr, David & Maryann	140.21
Parent, William & Susan	28.60
Parent, Robert, William & Anna	107.45
Pearson, David	203.65
Saltonstall, George & Frances	104.98
Plante, Arthur	13.05
Plante, Arthur & Carrier, Joseph	14.78
Porier, Edward	72.78
Quimby, Erwin & Dorothy	24.20
Richardson, Stanley & Barbara	151.07
Rice, Lillian	367.47
Ridgecrest Enterprises	103.05
Robbins, Paul	73.48
Robbins, E.R.	32.45
Robinson, Richard & Wanda	40.04
Robbins, Vernon	380.27
Rouleau, Francis & Sally	96.25
Rogers, Don & Harold	24.20
Safford, R.E.	28.60
Santella, Richard & Gwendolyn	32.45
Sargent, Lewis M.	299.75
Scott, James	26.95
Seymour, Peter & Walter	55.00
Shorey, Warren	59.40
Skilton, Alfred & Robinson, Carl	73.77
Smith, Peter	632.17
Snowman, Erlon	44.00
Thurlow, Carroll	420.75
Toothaker, Darrell	26.95
Toothaker, Rupert, Lydia & Mark	172.22
Trube, William	32.41
Twitchell, Michael	28.60
Twitchell, Roland heirs of	31.35
Timberlands, Inc.	5,867.33
Varanelli, Arthur & Carole	132.00
Varanelli, Lorraine	308.00
Vaughn, Lawrence & Gertrude	125.58

Walker, Bruce & Lee	83.60
Wardwell, Kenneth & Evelyn	114.33
Webb River Land	1,045.00
White, Donald & Jeanette	81.07
White, Elijah Jr.	267.54
Webster, Gertrude	279.95
Webster, John	636.24
White, Bailey & Clarice	554.25
White, Lillian	141.24
Williams, Stanley	61.16
Wing, John & Margaret	119.24
Zerbest, Kenneth	79.64
York, Virginia	657.31
Ellis, Edward	55.00
Cummings, Lawrence	32.45
McGuire, Sally & Thomas	68.75

Unpaid Taxes as of January 1, 1980

Alfieri, Lee	336.51
Averill, George Sr.	565.40
Averill, George Jr.	57.99*
Barnett, Thomas & Lois	341.00
Berry, Roger	121.00
Berry, Roger	192.50
Berry, Joe	59.62
Berry, Sidney	231.00
Benner, Phillip	143.00
Benner, Phillip	613.25
Bradbury, Lynda	282.24
Bowie, Bennie	99.00
Bowie, Bennie	419.65
Brown, Elwin	407.99*
Berry, Raymond	193.60*
Burnham, Michael	155.54
Burnham, Susan	127.25
Carrier, Leo	870.23
Carrier, Leo	77.77
Carrier, Leo	47.37
Ellis, Ronald	139.72
Flagg, Kenneth Sr.	326.15
Dailey, Linda	397.80
Henry, Brian	167.11
Grohman, Joann	603.35
Grohman, Joann	26.14
Hatch, Marion heirs of	74.25
Hatch, Marion heirs of	30.25
Hatch, Marion heirs of	41.25
Hatch, Marion heirs of	110.00
Harkness, Timothy & Sylvia	463.65
Houghton, Conrid Jr. & Vicki	427.35
Houghton, Emeral	101.75
Houghton, Emeral & Mary	409.75
Houghton, Emeral	82.50
Houghton, Lawrence	284.35
Houghton, Donald	71.50
Houghton, Conrid, Sr.	313.96
Holt, Richard & Grace	321.93
Hood, Alice	47.68*
Hutchinson, Barry	125.40

Hutchinson, Cecil	243.56
Hutchinson, Cecil	8.25
Hutchinson, Gary	24.20
Hutchinson, Gary	189.88
Hutchinson, Arthur	285.45
Hutchinson, Arthur	96.25
Hutchinson, Arthur	41.25
Hutchinson, Wilhelmina	394.35
Hutchinson, Wilhelmina	27.50
Hutchinson, Dale	72.60
Jackson, Evangeline	72.60
Hutchinson, Frank III	163.83
Hutchinson, Frank III	321.93
Hutchinson, Frank III	99.00
Hutchinson, Frank III	35.75
Lewitt, Michael	59.40
Maillet, William & Sharon	539.00
Packard, Arthur	85.80
Park, Donna & Edward	281.05
Robbins, Edith	(bal)74.00
Skidgell, Helen	160.05
Skidgell, William	454.65
Smith, Robert	134.20*
Spaulding, Merwin & Carole	355.85
Spaulding, Merwin & Carole	94.60
Spaulding, Merwin & Carole	517.00
Spaulding Merwin & Carole	.70
Turner, June	304.70
Turner, Leo	414.70
Virgin, Ralph Jr.	189.20
Virgin, Ralph Sr.	(bal.)139.89
Virgin, Ileana	(bal.) 146.40
Wade	734.25
Walker, Gerald	187.00
Weston, Robert & Anita	442.75
Moody, Russell T.	93.50
Noyes, Herbert	130.68
	<hr/>
	\$ 17,523.52

Non-Residents Unpaid

Averill, Lynn & Evelyn	129.31
Birtwell, Joan	124.21
Blaisdell, Eugene	37.51*

Bovin, Eugene	37.51*	
Bradbury, Calvin	299.75	
Cappello, Paul	110.00*	
Down, Charles	173.25	
Dustin, Shelton	99.00	
Essman, Russell	28.60	
Gordon, Charles & Marjorie	31.35	
Grant, Nicholas Jr.	856.90*	
Grant, Nicholas Jr.	69.52*	
Lemay, Hellen Hallock	154.55	
Hill, John & Lilly	31.35	
Hutchinson, Viola C.	29.15*	
Hutchinson, Bradley	69.30	
Jamison, Audrey	(bal.) 33.00	
Johnson, Richard	255.20	
Knox, Donald	73.48	
Koliche, Suzann	136.62	
Libby, James	16.21	
Lambert, Eugene	523.97*	
McIntyre, Ronald	24.20	
McDonald, John & Norma	63.80	
Parr, David & MaryAnn	140.21	
Pearson, David	203.65*	
Poirier, Edward	72.78	
Stafford, R.E.	28.60	
Scott, James	26.95	
Shorey, Warren	59.40	
Skilton, Alfred & Robinson, Carl	73.77	
McGuire, Thomas & Sally	68.75	
	<hr/>	
	4,242.78	
Total Resident Unpaid		17,523.52
Total Non-Resident Unpaid		4,242.78
		<hr/>
BALANCE DUE		21,766.30

Unpaid Personal Property Tax as of January 1, 1980

1975

Berry, Paul	8.00	
Ellis, Ronald	1.80	
Hutchinson, Harry	(Inventory) 55.13	
Hutchinson, Gary	11.00	
McLellan, Lorraine	6.75	
Virgin, Ralph Jr.	7.00	
	<hr/>	
	89.68	

1976

Ellis, Ronald	3.33
Houghton, Lawrence	1.48
Hutchinson, Harry	(Inventory) 57.00
Hutchinson, Gary	(Inventory & P.P.) 24.92
Virgin, Ralph Jr.	14.14
Jalbert, Leon	<u>92.50</u>
	(.25 off) 193.37

1977

Houghton, Emeral	9.60
Skidgell, William	9.60
Virgin, Ralph Jr.	<u>6.00</u>
	25.20

Unpaid - no lien

Houghton, Lawrence	237.26
Parr, David	23.13

**State of Maine
DEPARTMENT OF AUDIT
State House Station 66
Augusta, Maine 04333**

Board of Selectmen
Town of Carthage
Carthage, Maine

We have examined the financial statements in accordance with Title 30, Section 5253, Maine Revised Statutes Annotated of 1964, as amended, of the Town of Carthage for the year ended December 31, 1979, listed in the foregoing table of contents. Our examination was made in accordance with generally accepted auditing standards, and included such tests of the accounting records and such other auditing procedures as we considered necessary in the circumstances.

The Town has not maintained a record of general fixed assets, and accordingly a statement of general fixed assets, required by generally accepted accounting principles, is not included in our financial report.

In our opinion, the aforementioned statements for the year ended December 31, 1979, present fairly the information contained therein, in conformity with the provisions of Title 30, Revised Statutes, Section 5253, applied on a basis consistent with that of the preceding year.

George J. Rainville
State Auditor

January 26, 1980

COMMENTS

OPERATIONAL RESULTS

The operations for the year showed an unexpended departmental balance of \$8,082.30 lapsed to unappropriated surplus.

The overlay and unexpended balances in the current expense, winter roads and reconditioning town roads accounts were the major factors contributing to the balance lapsed.

ASSETS. . .Cash balances of \$25,413.94, which included general, federal revenue sharing and change funds, were accounted for by bank deposits and cash on hand.

Taxes receivable of \$22,334.69 represented current year accounts of \$21,766.30 and prior delinquent accounts of \$568.39 dating to 1975. Tax liens and tax acquired property amounted to \$2,431.70 and \$1,002.01 respectively.

RESERVES AND SURPLUS. . .The departmental accounts showed a net unexpended balance of \$16,733.46 carried forward to the ensuing year in accordance with legal requirements and/or customary practice. At the annual town meeting the voters authorized the selectmen to lapse or carry balances at their discretion with the exception of those which are required by law to be carried.

Unappropriated federal revenue sharing funds of \$2,470.56 were available at January 1, 1979. Entitlement payments totaled \$6,396.00 for the fiscal year. Interest earnings credited to the fund amounted to \$338.57. Appropriated revenue sharing funds of \$2,470.56 were transferred to the fire truck reserve fund. Unappropriated funds at December 31, 1979, totaled \$6,734.57.

Excise taxes of \$10,627.99, snowmobile refund of \$474.00, inventory tax of \$610.64 and tree growth tax of \$3,432.77 were carried forward to the ensuing year.

The unappropriated surplus was \$13,327.49, a decrease of \$337.85 for the year. This change was occasioned principally by voter authorized transfers for operating purposes less departmental balances lapsed.

TRUST AND RESERVE FUNDS. . . Trust fund principals totaled \$790.00 and unexpended income was \$210.84. The funds were on deposit in the Maine National Bank, Dixfield, Maine. The reserve fund, established for the purchase of a fire truck, amounted to \$7,655.41 at December 31, 1979. This fund was on deposit with the Franklin County Savings Bank, Rumford, Maine.

GENERAL

Transfers from excise taxes, federal revenue sharing, surplus and the use of the overlay account for overdrafts were authorized by voters at the annual town meeting.

**TOWN OF CARTHAGE
COMPARATIVE BALANCE SHEET**

GENERAL FUND

Dec. 31, 1979 Dec. 31, 1978

Assets

Cash on Hand and In Bank	\$ 25,413.94	\$ 27,590.73
Due from Fire Truck Reserve Fund		22.34
Taxes Receivable	22,334.69	14,366.04
Tax Liens	2,431.70	3,654.86
Tax Acquired Property	<u>1,002.01</u>	<u>863.27</u>
 Total	 51,182.34	 46,497.24

Liabilities, Reserves and Surplus

Liabilities:

Accounts Payable	8.45	8.45
------------------	------	------

Reserves:

Departmental Balances		
Carried (Exhibit D)	16,733.46	18,417.46
Federal Revenue Sharing	6,734.57	2,470.56
State Revenue Sharing	(767.03)	335.20
Snowmobile Refund	474.00	420.00
Excise Taxes	10,627.99	9,146.61
Inventory Tax	610.64	359.09
Tree Growth Tax	<u>3,432.77</u>	<u>1,674.53</u>
	37,846.40	32,823.45

Surplus:

Unappropriated (Exhibit C)	<u>13,327.49</u>	<u>13,665.34</u>
----------------------------	------------------	------------------

Total	\$ 51,182.34	46,497.24
-------	--------------	-----------

TRUST AND RESERVE FUNDS

	Dec. 31, 1979		Dec. 31, 1978
Assets			
Trust Funds:			
\$1,000.84	<u>\$1,000.84</u>	1,000.84	<u>956.87</u>
Reserve Fund:			
Time Deposit	<u>7,655.41</u>	<u>4,913.65</u>	<u>4,913.65</u>
	<u>7,655.41</u>		<u>4,913.65</u>
Total	<u>8,656.25</u>		<u>5,870.52</u>
Liabilities			
Trust Funds:			
Principals	790.00	790.00	
Unexpended Income	<u>210.84</u>	<u>166.87</u>	
	1,000.84		956.87
Reserve Fund:			
Fire Truck	7,655.41	4,891.31	
Due Federal			
Revenue Sharing		<u>22.34</u>	
	<u>7,655.41</u>		<u>4,913.65</u>
Total	<u>8,656.25</u>		<u>5,870.52</u>

TOWN OF CARTHAGE
STATEMENT OF DEPARTMENTAL OPERATIONS
YEAR ENDED DECEMBER 31, 1979

	Appropriations	Other Credits	Total Credits	Debits	Balances	
					Lapsed	Carried
GENERAL GOVERNMENT						
Current Expenses	\$ 3,500.00	1,270.14	4,770.14	3,506.31	1,263.83	-0-
Bond Town Officers	60.00	-0-	60.00	40.00	20.00	-0-
Office Supplies	600.00	-0-	600.00	287.59	312.41	-0-
Town Officers Salaries	5,500.00	-0-	5,500.00	5,237.09	262.91	-0-
PROTECTION						
Fire Department - Carthage	1,700.00	-0-	1,700.00	1,559.71	140.29	-0-
Fire Department - South Carthage	-0-	1,695.45	1,695.45	1,695.45	-0-	-0-
Civil Emergency Preparedness	200.00	-0-	200.00	-0-	-0-	200.00
Insurance	200.00	-0-	200.00	187.80	12.20	-0-
Street Lights	1,500.00	-0-	1,500.00	1,310.51	189.49	-0-
Ambulance Service	1,062.00	-0-	1,062.00	1,062.00	-0-	-0-
Fire Truck Reserve	-0-	2,470.56	2,470.56	2,470.56	-0-	-0-
HEALTH AND SANITATION						
Town Dump	-0-	3,354.17	3,354.17	621.00	-0-	2,733.17
Androscoggin Home Health Service	142.00	-0-	142.00	142.00	-0-	-0-
HIGHWAYS AND BRIDGES						
State Aid Road Construction	2,400.00	9,260.36	11,660.36	10,663.00	-0-	997.36
Cutting Bushes	100.00	-0-	100.00	49.00	51.00	-0-
Plowing Winter Roads	7,000.00	14,610.61	21,610.61	18,716.94	2,893.67	-0-
Reconditioning Town Roads	3,000.00	-0-	3,000.00	2,567.74	432.26	-0-
Grover Bridge Fund	-0-	6,000.00	6,000.00	-0-	-0-	6,000.00
Summer Roads	3,500.00	109.79	3,609.79	3,609.79	-0-	-0-
CHARITIES						
Town Poor	200.00	-0-	200.00	53.90	146.10	-0-
CEMETERIES						
General Care	100.00	-0-	100.00	60.00	40.00	-0-
Newman Cemeteries	-0-	126.74	126.74	-0-	-0-	126.74
SPECIAL ASSESSMENTS						
School Administrative District No. 21	39,305.93	6,676.19	45,982.12	39,305.93	-0-	6,676.19
County Tax	2,556.00	-0-	2,556.00	2,556.00	-0-	-0-
Overlay	2,975.78	-0-	2,975.78	657.64	2,318.14	-0-
UNCLASSIFIED						
Discount on Taxes	500.00	336.94	836.94	836.94	-0-	-0-
Maine Municipal Association	236.60	-0-	236.60	236.60	-0-	-0-
Dixfield Y.M.C.A.	100.00	-0-	100.00	100.00	-0-	-0-
Public Television	100.00	-0-	100.00	100.00	-0-	-0-
Tax Abatements	-0-	101.38	101.38	101.38	-0-	-0-
TOTAL	\$ 76,538.31	46,012.33	122,550.64	97,734.88	8,082.30	16,733.46

**Town of Carthage
Valuation, Assessment, and Collection of Taxes
Year Ended December 31, 1979**

VALUATION:		
Real Estate		3,110,209.00
Personal Estate		<u>101,200.00</u>
TOTAL VALUATION		3,211,409.00
 ASSESSMENT:		
Valuation X Rate		
$\$3,211,409.00 \times .022$	70,651.00	
Variance		<u>.03</u>
TOTAL ASSESSMENT CHARGED TO COLLECTOR		70,650.97
 COLLECTION AND CREDITS:		
Cash Collections	48,047.73	
Discounts		<u>836.94</u>
TOTAL COLLECTION AND CREDITS		<u>48,884.67</u>
1979 TAXES RECEIVABLE - December 31, 1979		21,766.30

Computation of Assessment

TAX COMMITMENT	70,650.97	
ADD - State Revenue Sharing		<u>5,887.34</u>
		76,538.31
Appropriations	31,700.60	
School Administrative		
District No. 21	39,305.93	
County Tax		<u>2,556.00</u>
TOTAL REQUIREMENTS OVERLAY		<u>73,562.53</u> 2,975.78

Town of Carthage
FEDERAL REVENUE SHARING FUNDS
Statement of Revenue, Appropriation and Balance
Year ended December 31, 1979

UNAPPROPRIATED FUNDS - January 1, 1979	\$2,470.56
REVENUE:	
Entitlement Payments	6,396.00
Interest	<u>338.57</u>
TOTAL REVENUE	<u>6,734.57</u>
TOTAL	<u>9,205.13</u>
APPROPRIATION:	
Capital Outlay - Fire Truck Reserve Fund	<u>2,470.56</u>
UNAPPROPRIATED FUNDS — December 31, 1979	6,734.57

Town of Carthage
Cash on Hand and in Bank
December 31, 1979

Maine National Bank, Dixfield, Maine	
Demand Deposit (General) -	
Balance per Statement - December 31, 1979	\$14,700.80
Add-Deposit in Transit	<u>7,837.81</u>
	22,538.61
Deduct-Outstanding Checks	<u>3,909.24</u>
	\$18,629.37
Franklin Savings Bank, Rumford, Maine	
Time Deposit (Federal Revenue Sharing)- Passbook No. 10-6377	
	6,734.57
Change Fund:	
Tax Collector	<u>50.00</u>
TOTAL	<u>\$25,413.94</u>

Town of Carthage
Statement of Cash Receipts and Disbursements
Year Ending December 31, 1979

CASH BALANCE - January 1, 1979		25,142.51
CASH RECEIPTS:		
Tax Collections		
Current Year	48,047.73	
Prior Years	<u>8,636.72</u>	
Excise Tax Collections		56,648.45
Tax Liens		10,627.99
Tax Acquired Property		5,606.72
Departmental Accounts		537.25
Federal Revenue Sharing		9,290.62
Entitlement Payments	6,396.00	
Interest Earned	<u>338.57</u>	
		6,734.57
State of Maine	4,785.11	
Revenue Sharing	4,785.11	
Inventory Tax	251.55	
Tree Growth Tax	1,758.24	
Snowmobile Registrations	<u>474.00</u>	
Investments Redeemed		7,268.90
Interest on Investments		8,000.00
Miscellaneous		63.60
		<u>16.25</u>
TOTAL CASH RECEIPTS		<u>104,830.35</u>
TOTAL		<u>129,972.86</u>
CASH DISBURSEMENTS:		
Departmental Accounts		96,138.92
Investments Purchased		8,000.00
Federal Revenue Sharing Invested		6,734.57
Webb River Valley Snowmobile Club		420.00
Tax Collector's Change Fund		<u>50.00</u>
TOTAL CASH DISBURSEMENTS		<u>111,343.49</u>
CASH BALANCE December 31, 1979		18,629.37

Town of Carthage
Taxes Receivable, Tax Liens and Tax Acquired Property
at December 31

TAXES RECEIVABLE:	<u>1979</u>	<u>1978</u>
1979	21,766.30	
1978	260.39	14,053.48
1977	25.20	25.20
1976	193.12	196.08
1975	<u>89.68</u>	<u>91.28</u>
	22,334.69	14,366.04
TAX LIENS:		
1978	2,431.70	
1977		3,654.86
TAX ACQUIRED PROPERTY	<u>1,002.01</u>	<u>863.27</u>
TOTAL	<u><u>25,768.40</u></u>	<u><u>18,884.17</u></u>

Town of Carthage
Trust Funds
December 31, 1979

CEMETERY TRUST FUNDS:	<u>Principal</u>	<u>Unexpended Income</u>
I.P. Staples	50.00	13.41
Flora Maxwell White	75.00	20.15
William E. Putnam	200.00	53.73
Frank and Nellie Hutchinson	100.00	26.84
Frank W. Brown	200.00	53.01
Ada M. Smith	115.00	30.85
Tyler Hutchinson	<u>50.00</u>	<u>12.85</u>
TOTAL	<u><u>790.00</u></u>	<u><u>210.84</u></u>

Town of Carthage
Statement of Change in Unappropriated Surplus
Year Ended December 31, 1979

UNAPROPRIATED SURPLUS - January 1, 1979	13,665.34
DECREASE:	
Transfer (per voters) For -	
Grover Bridge Fund	4,000.00
Town Dump	3,000.00
South Carthage Fire Department	<u>1,500.00</u>
Total Decrease	8,500.00
INCREASE:	
Net Unexpended Departmental Balance	
Lapsed (Exhibit D)	8,082.30
Interest on Investments	63.60
Miscellaneous	<u>16.25</u>
Total Increase	<u>8,162.15</u>
NET DECREASE	<u>337.85</u>
UNAPPROPRIATED SURPLUS - December 31, 1979	13,327.49

Town of Carthage
Fire Truck Reserve Fund
December 31, 1979

BALANCE - January 1, 1979	4,891.31
ADDITIONS:	
Transferred from	
Federal Revenue Sharing	2,470.56
Interest Earned	<u>293.54</u>
TOTAL ADDITIONS	<u>2,764.10</u>
BALANCE - December 31, 1979	<u><u>7,655.41</u></u>
ACCOUNTABILITY:	
Franklin Savings Bank, Rumford, Maine	
Passbook No. 105837	<u><u>7,655.41</u></u>

DETAILS OF EXPENDITURES
Wages & Salaries

Selectmen		
Merwin Spaulding 1st.		1,000.00
Kermit Houghton 2nd.		800.00
Jan Hutchinson 3rd.		600.00
Tax Collector		
Deborah Swett		1,800.00
Treasurer		
Dorothy Mason		600.00
Town Clerk		
Pearl Hutchinson		250.00
Constable		
Peter Houghton		125.00
Fire Chief		
Kenneth Flagg Jr.		100.00
Health Officer		
Carole Spaulding		50.00

Fire Department Carthage

Ralph L. Clarke (furnace pipe)	23.87
Central Maine Power Co.	142.91
Rafuse Oil Co.	147.54
Benedix Oil Co.	286.06
William Skidgell (truck repair)	44.00
Blanchards Ass.	36.41
Sherman-Williams (paint)	33.53
Frosts Motor Supply (batteries)	32.55
Edmond Berry (plowing)	88.00
Henry's (gas)	27.55
True Value (paint)	125.55
Puiia Hardware	42.24
Raymond Berry Jr. (labor)	60.00
Ted Berry (engine repair)	240.00
Kyes Insurance	212.00

Fire Department South Carthage

Central Maine Power Co.	78.73
Cash & Carry	28.24
Ralph L. Clarke	21.29
Blue Rock	246.40
Cianbro Corp.	662.83
Puiia Hardware	657.96

Sanitation

Roland Skidgell (plowing)	70.00
Merwin Spaulding (bulldozing)	30.00
Arsenault Brothers (bulldozing)	365.00
Arsenault's Store	3.50
William Skidgell (bulldozing)	120.00
Kenneth Flagg Jr.	32.50

Reconstruction of Town Roads & Bridges

Roger Berry (labor)	18.00
Stuart Turner (labor)	18.00
Kermit Houghton (truck, labor)	71.75

William Skidgell (bulldozer)	1,000.00
Russell Moody (bulldozer)	40.00
William Mailett (backhoe)	40.00
Department of Transportation	1,200.00
Blue Rock	179.99

Plowing & Sanding

William Skidgell (plowing, sanding, cleaning bridges, stock piling sand)	13,482.52
R. & S. Swan (sanding)	210.00
Ronald McCarthy (plowing, stock piling sand)	2,060.00
Ardean Proctor (truck & sand)	730.00
Michael Skidgell (labor)	18.00
Scott Arsenault (labor)	18.00
Donald Houghton (labor)	16.25
W.H. Shirliff (salt)	2,172.17
Emeral Houghton (truck)	10.00

Summer Roads & Bridges

Department of Transportation	203.27
Kermit Houghton (rock rake, road work)	472.25
Merle Knox (gravel)	210.00
Regionald Smith (gravel)	4.00
T.L. Dickson Jr. (backhoe, truck)	190.00
W.H. Shirliff (culverts)	419.28
Jan Hutchinson (road work, rock rake)	65.00
Kenneth Flagg Jr. (labor)	38.85
Sidney Flagg	58.00
Blue Rock (cold patch)	188.07
William Mailett (road work)	126.00
Timberlands (grader)	500.00
William Skidgell (truck, backhoe)	556.50
Stuart Turner (road work)	30.00
Michael Spaulding (labor)	33.50
Peter Houghton (labor)	53.00
Michael Skidgell (labor)	22.75
Barry Averill (labor)	43.89
Robert Carson (labor)	43.89

Current Expense

Arsenault's Store	18.39
Registrar of Deeds	124.00
Rafuse Oil (furnace blower)	68.75
Kermit Houghton (milage & warden)	143.69
New England Telephone Co.	139.56
Leonard Hutchinson (plowing church)	110.00
Marks Printing	19.28
Jan Hutchinson (auditor, milage)	56.40
Griffin Gas	25.46
Debora Swett (liens, postage, supplies, change fund, school)	479.17
Maine Retirement System	367.80
Audit Report	422.32
Central Maine Power	71.21
Carole Spaulding (typing for selectmen & town reports)	50.45
Merwin Spaulding (auditor, milage, postage)	55.00
Coburn Press (town reports)	642.20
Minot Flagg (moderator)	40.00
Rumford Insurance	31.00
M.M.A. (treasurer school)	35.00
W.S. Darley (Constable's car light)	30.00
Peter Houghton (milage)	87.50
Dorothy Mason (school, liens)	75.99
Edmund Berry (plowing)	88.00

Current Expense

Harriett Swett (ballot clerk)	78.00
Mildred Smith (ballot clerk)	78.00
Elaine Hutchinson (ballot clerk)	35.75
Wilhelmina Hutchinson (ballot clerk)	35.75
Stetson Hutchinson (warden)	35.75
Lewiston Daily Sun (ads)	15.00
Raymond Berry Jr. (labor)	60.00
Maine National Bank (checks)	18.72
Pearl Hutchinson (postage)	15.59

INDEX

Town Officers 3

Town Warrant 4

Report of Town Clerk 10

Franklin County Community Action Council 11

Androscoggin Home Health Services, Inc. 14

Report of School District 15

List of Taxpayers 22

Audit 33

Report of Treasurer 39