

1948

# Annual Report of the Municipal Officers of the Town of Carthage for the Year Ending February 7, 1948

Carthage (Me.)

Follow this and additional works at: <https://digitalcommons.library.umaine.edu/towndocs>

---

## Repository Citation

Carthage (Me.), "Annual Report of the Municipal Officers of the Town of Carthage for the Year Ending February 7, 1948" (1948).  
*Maine Town Documents*. 5853.  
<https://digitalcommons.library.umaine.edu/towndocs/5853>

This Report is brought to you for free and open access by DigitalCommons@UMaine. It has been accepted for inclusion in Maine Town Documents by an authorized administrator of DigitalCommons@UMaine. For more information, please contact [um.library.technical.services@maine.edu](mailto:um.library.technical.services@maine.edu).

# ANNUAL REPORT

OF THE

## MUNICIPAL OFFICERS

OF THE

## TOWN OF CARTHAGE

FOR THE

Year Ending February 7, 1948

"

---

Farmington, Maine  
The Knowlton & McLeary Co., Printers  
1948

# Town Officers 1947

---

*Clerk*

PEARL HUTCHINSON

*Selectmen, Assessors and Overseers of the Poor*

M. E. HAMMOND      E. R. BERRY      CHAS. MORSE

*Road Commissioner*

A. E. BURGESS

*Treasurer*

MILDRED C. SWETT

*Superintending School Committee*

CORA WHITE      CHAS. MORSE      ALFRED WHITE

*Superintendent of Schools*

GERALD CUSHING

*Collector and Constable*

LEE G. HUTCHINSON

*Health Officer*

A. E. BURGESS

*Sealer of Weights and Measures*

M. E. HAMMOND

*Truant Officer*

GUY C. ROBBINS

# Town Warrant

---

Franklin, ss.

State of Maine

To Lee G. Hutchinson, a Constable in the Town of Carthage in said  
County,

Greetings:

In the name of the State of Maine you are hereby required to notify and warn the inhabitants of said Town of Carthage, qualified by law to vote in town affairs, to assemble at the Grange Hall, Berry Mills, in said town on the 1st day of March, A. D. 1948 at ten o'clock in the forenoon, to act on the following articles, to wit:

ARTICLE 1. To choose a Moderator to preside at said meeting.

ART. 2. To choose a Town Clerk for the ensuing year.

ART. 3. To see if the town will vote to accept the Town Reports of the Municipal Officers for the year ending February 7, 1948.

ART. 4. To choose all necessary Town Officers for the ensuing year.

ART. 5. To see what sum of money the town will appropriate and raise for support of Common Schools, including Tuition, Text-books and Supplies, Schoolhouse Repairs, Insurance, School Office Expense, High School Tuition, and Interest on School Fund, including Superintendent of Schools.

ART. 5a. To see what sum the town will vote to raise for the purchasing of a new school conveyance or take any other action thereupon.

ART. 5b. To see if the town will direct the School Board to close the Stickney School in the event it should prove cheaper to pay transportation and tuition elsewhere.

ART. 6. To see if the town will vote to instruct the Selectmen to petition the County Commissioner to discontinue the road from John Robbin's place to the end of road.

ART. 7. To see what the town will do with the money received for the use of the town truck and plow.

ART. 8. To see if the town will appropriate and raise \$1,000.00 and interest to pay on the Town Truck and Snow Plow for the year 1948.

ART. 9. To see if the town will appropriate and raise the sum of \$600.00 to paint and plank the Iron Bridges.

ART. 10. To see what sum the town will appropriate and raise for the Repair of Summer Roads and Bridges.

ART. 11. To see what sum the town will appropriate and raise for Patrol Fund.

ART. 12. To see what sum the town will appropriate and raise for State Aid Road Construction, in addition to the amounts regularly raised for the care of ways, highways, and under the provisions of Section 19, C. 28, R. S. 1930, or under provisions of Section 3, C. 229, P. L. 1937.

ART. 13. To see what sum, if any, the town would recommend to take from the Joint State Aid Account for the purpose of applying bituminous surface treatment to State Aid Roads, in excess of the requirements of Section 2, C.132, P. L. 1935.

ART. 14. To see if the town will vote to instruct the Selectmen to petition the County Commissioners to discontinue the road from the Newman Cemetery road to the Weld Town Line.

ART. 15. To see what sum the town will appropriate and raise for road tools.

ART. 16. To see what sum the town will appropriate and raise for the purpose of plowing and sanding Winter Roads on Routes 2, 142, State Aid No. 3.

ART. 17. To see what sum the town will appropriate and raise for Winter Roads.

ART. 18. To see what sum the town will appropriate and raise for care of Poor.

ART. 19. To see what sum the town will appropriate and raise for County Nurse services.

ART. 20. To see if the town will appropriate and raise the sum of \$15.00, being dues for Maine Municipal Association.

ART. 21. To see what sum the town will appropriate and raise for Discount on Taxes.

ART. 22. To see what sum the town will appropriate and raise for Overdrawn Accounts.

ART. 23. To see what sum the town will appropriate and raise for Abatements.

ART. 24. To see what sum the town will appropriate and raise for Current Expense.

ART. 25. To see if the town will vote to pay and refund its indebtedness to the Rumford Falls Trust Co. by authorizing the Town Treasurer, with the approval of the Selectmen, to issue and negotiate the note or notes of the town to the amount of said indebtedness, the number, terms, and conditions of said notes to be determined by the Selectmen.

ART. 26. To see if the town will vote to authorize the Town Treasurer, with the approval of the Selectmen, to hire such sums of money as may be necessary to pay town charges and town debts, in anticipation of the collection of taxes, and to issue and negotiate the

note or notes of the town so borrowed to an amount not exceeding in the aggregate the total levy for the preceding municipal year, as temporary loans.

ART. 27. To see if the town will vote to charge interest beginning December the first, next, on all taxes remaining unpaid ~~at time of settlement in the following February.~~

ART. 28. To see if the town will vote to instruct the S. S. Committee to arrange the place and number of schools for the ensuing year, to the best interests of the town.

ART. 29. To see what sum, if any, the town will vote to raise for advertising our Natural Resources, Advantages and Attractions, under the provisions of Chapter 5, S. 82, R. S. 1930, said sum to be expended under the direction of the State of Maine Publicity Bureau.

ART. 30. To see what sum the town will appropriate and raise for the care of Cemeteries.

ART. 31. To see what sum of money the town will vote to appropriate and raise for necessary Bonds for Town Officers.

ART. 32. To see if the town will vote to authorize the Selectmen on behalf of the town, to sell and dispose of any real estate acquired by the town for non-payment of taxes thereon, on such terms as they deem advisable and to execute quit-claim deeds for such property.

ART. 33. To see if the town will vote to raise the sum of \$100.00 to cooperate with the Maine Forest Service and the Federal Government in the control of White Blister Rust in accordance with the R. S., C. 11, Secs. 62, 63, 64.

ART. 34. To see what rate percent and final date to be allowed on Discount of Taxes on the 1948 commitment, poll taxes excepted.

ART. 35. To see what sum, if any, the town will appropriate and raise for the purpose of hiring a doctor to inspect the Carthage school children.

ART. 36. To see if the town will vote to authorize the Town Treasurer to sell and assign unmatured tax mortgage liens for the amount unpaid and interest and costs.

ART. 37. To see what sum, if any, the town will appropriate and raise for the purpose of purchasing a sand spreader.

ART. 38. To see what sum, if any, the town will appropriate and raise for an Honor Roll.

ART. 39. To see if the town will vote to instruct the Selectmen to petition the County Commissioners to discontinue the road from Potter Schoolhouse to the residence of Elva Maxwell place so called.

ART. 40. To see what kind of Fire Fighting Equipment the town will vote to buy if any, and raise money for the same.

ART. 41. To see if the town will appoint a Committee to purchase the Fire Equipment.

ART. 42. To see if the town will fix a date when taxes shall be due and payable.

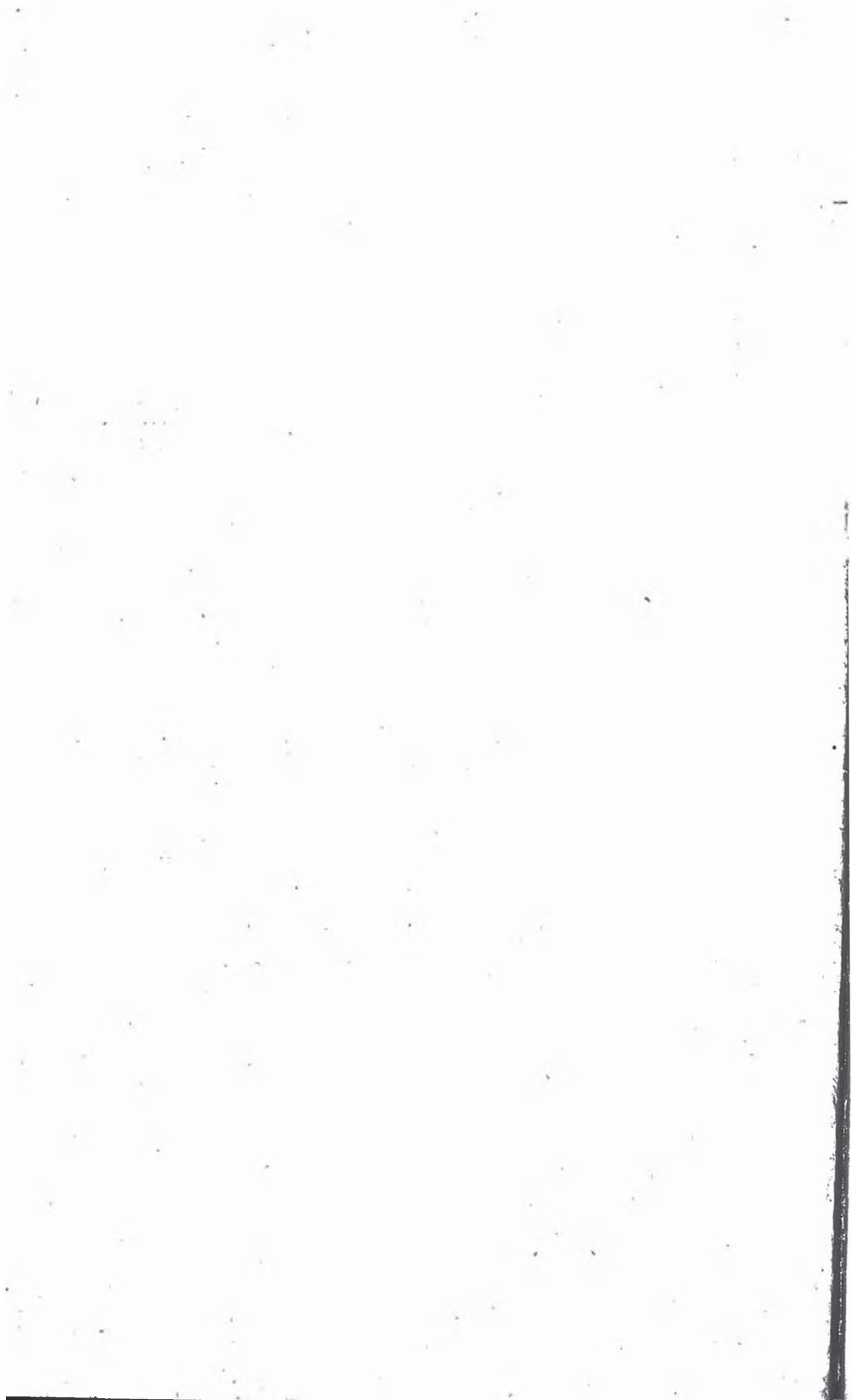
The Selectmen give notice that they will be in session at the Grange Hall, Berry Mills, in said town, at 9:30 o'clock in the forenoon on the day of said meeting, for revising and correcting the list of voters.

Given under our hands at Carthage, this 7th day of February, A. D. 1948.

M. E. HAMMOND,  
E. R. BERRY,  
CHAS. N. MORSE,

*Selectmen of Carthage.*





# Report of Selectmen and Assessors

*To the Citizens of Carthage:*

Valuation of Property and number of Polls in town taxed April, 1947.

## VALUE OF REAL ESTATE

|              |                     |
|--------------|---------------------|
| Resident     | \$ 47,045 00        |
| Non-resident | 103,017 00          |
| Total        | <u>\$150,062 00</u> |

## PERSONAL ESTATE

|              |                     |
|--------------|---------------------|
| Resident     | \$14,248 00         |
| Non-resident | 150 00              |
| Total        | <u>\$ 14,398 00</u> |

|                          |                     |
|--------------------------|---------------------|
| Grand Total Valuation    | <u>\$164,460 00</u> |
| Total value of land      | \$120,467 00        |
| Total value of buildings | 29,595 00           |
| No. of Polls taxed       | 65                  |
| No. of Polls not taxed   | 8                   |
| Rate of Poll Tax         | 3 00                |
| Rate of Taxation         | .076                |
| Rate of Collection       | .02                 |

## TAXABLE LIVESTOCK AND POULTRY

|                                 | No. | Value              |
|---------------------------------|-----|--------------------|
| Horses and mules                | 34  | \$4,200 00         |
| Cows                            | 101 | 5,050 00           |
| Oxen                            | 13  | 630 00             |
| Heifers over two years old      | 18  | 720 00             |
| Heifers less than two years old | 15  | 450 00             |
| Poultry                         | 330 | 198 00             |
| Total                           |     | <u>\$11,248 00</u> |

## EXEMPT LIVESTOCK AND POULTRY

|           | No. | Value    |
|-----------|-----|----------|
| Yearlings | 28  | \$700 00 |
| Sheep     | 11  | 66 00    |
| Swine     | 13  | 130 00   |
| Poultry   | 308 | 185 00   |

---

\$1,081 00

## ALL OTHER KINDS OF PERSONAL PROPERTY

|                            |     |            |
|----------------------------|-----|------------|
| Stock in trade             | 1   | \$1,000 00 |
| Lumber                     | 20M | 400 00     |
| Gasoline pumps             | 3   | 150 00     |
| Radios                     | 45  | 450 00     |
| Tractors                   | 1   | 200 00     |
| Machinery and equipment    |     | 300 00     |
| Unmanufactured materials   |     | 250 00     |
| Finished products in mills |     | 400 00     |

---

Total

---

\$3,150 00

## INDUSTRIAL AND UTILITY PROPERTY

|                    | No. | Value      |
|--------------------|-----|------------|
| Wood working mills | 2   | \$5,000 00 |

## MONEY RAISED AND ASSESSED

|                                    |            |
|------------------------------------|------------|
| School budget                      | \$4,126 00 |
| Town truck payment and interest    | 1,300 00   |
| Repair of Summer Roads and Bridges | 500 00     |
| Paint and plank iron bridges       | 600 00     |
| Patrol Fund                        | 426 30     |
| Winter Roads                       | 400 00     |
| Sand spreader                      | 150 00     |
| Care of Poor                       | 600 00     |
| County Nurse                       | 50 00      |
| Maine Municipal Association Dues   | 15 00      |
| Discount on taxes                  | 170 00     |
| Overdrawn accounts                 | 1,117 72   |
| Current expenses                   | 1,300 00   |

|                                            |                    |
|--------------------------------------------|--------------------|
| Care of Cemeteries                         | \$ 100 00          |
| Bonds of Town Officers                     | 25 00              |
| Doctor to inspect Carthage school children | 50 00              |
| Plowing and sanding winter roads           | 300 00             |
| Honor Roll                                 | 100 00             |
| State Tax                                  | 1,059 03           |
| County Tax                                 | 379 60             |
| <b>Total</b>                               | <b>\$12,768 65</b> |

STATE AID ROAD CONSTRUCTION

|                     |                   |
|---------------------|-------------------|
| Unexpended balance  | \$ 336 71         |
| Received from State | 3,851 02          |
| <b>Available</b>    | <b>\$4,187 73</b> |
| Expended            | 4,187 69          |
|                     | <b>\$ 04</b>      |

This amount has been transferred to the Surplus Account.

THIRD CLASS MAINTENANCE

|                    |          |
|--------------------|----------|
| Unexpended Balance | \$521 31 |
| Expended           | 521 31   |

PATROL FUND

|                         |                 |
|-------------------------|-----------------|
| Appropriated            | \$426 30        |
| Overdraft appropriation | 72 30           |
| <b>Available</b>        | <b>\$498 60</b> |
| Expended                | \$448 70        |
| Overdraft               | 72 30           |
|                         | <b>\$521 00</b> |
| Overdraft               | <b>\$ 22 40</b> |

STATE AID ROADS

|                     |          |
|---------------------|----------|
| Received from State | \$599 36 |
| Expended            | 599 36   |

## STATE AID TOOLS

|                    |  |         |
|--------------------|--|---------|
| Unexpended Balance |  | \$ 3 51 |
|--------------------|--|---------|

## PLOWING AND SANDING ROUTES 142-2-3

|                         |            |            |
|-------------------------|------------|------------|
| Received from State     | \$973 19   |            |
| Appropriation           | 300 00     |            |
| Overdraft appropriation | 6 77       |            |
|                         | <hr/>      |            |
| Available               |            | \$1,279 96 |
| Expended                | \$1,028 55 |            |
| Overdraft               | 6 77       |            |
|                         | <hr/>      |            |
|                         |            | \$1,035 32 |

|                          |          |            |
|--------------------------|----------|------------|
| Unexpended               |          | \$ 244 64  |
| <i>Winter Roads Town</i> |          |            |
| Appropriated             | \$400 00 |            |
| Overdraft appropriated   | 323 47   |            |
|                          | <hr/>    |            |
| Available                |          | \$ 723 47  |
| Expended                 | \$685 09 |            |
| Overdraft                | 323 47   |            |
|                          | <hr/>    |            |
|                          |          | \$1,008 56 |
|                          |          | <hr/>      |
| Overdraft                |          | \$ 285 09  |

## SUMMER ROADS AND BRIDGES

|                         |          |           |
|-------------------------|----------|-----------|
| Appropriation           | \$500 00 |           |
| Overdraft appropriation | 46 15    |           |
|                         | <hr/>    |           |
| Available               |          | \$ 546 15 |
| Expended                | \$596 33 |           |
| Overdraft               | 46 15    |           |
|                         | <hr/>    |           |
|                         |          | \$ 642 48 |
|                         |          | <hr/>     |
| Overdraft               |          | \$ 96 33  |

## SNOW REMOVAL EQUIPMENT

|                                           |            |          |
|-------------------------------------------|------------|----------|
| Appropriated                              | \$1,300 00 |          |
| Expended                                  | 1,294 18   |          |
|                                           | <hr/>      |          |
| Unexpended Balance                        |            | \$ 5 82  |
| Received for use of plow                  | \$1,240 97 |          |
| Miscellaneous repair and running expenses | 779 91     |          |
|                                           | <hr/>      |          |
| Unexpended                                |            | \$461 06 |

This amount has been transferred to the Surplus Account.

## PAINT AND PLANK IRON BRIDGES

|               |          |          |
|---------------|----------|----------|
| Appropriation | \$600 00 |          |
| Expended      | 578 78   |          |
|               | <hr/>    |          |
| Unexpended    |          | \$ 21 22 |

## SAND SPREADER

|                    |          |  |
|--------------------|----------|--|
| Appropriation      | \$150 00 |  |
| Unexpended Balance | 150 00   |  |

## DENTAL CARE OF SCHOOL CHILDREN

|                    |          |
|--------------------|----------|
| Unexpended Balance | \$ 35 00 |
|--------------------|----------|

## PUBLIC HEALTH NURSE

|              |          |
|--------------|----------|
| Appropriated | \$ 50 00 |
| Expended     | 50 00    |

## MEDICAL CARE OF SCHOOL CHILDREN

|                    |         |          |
|--------------------|---------|----------|
| Unexpended Balance | \$11 00 |          |
| Appropriated       | 50 00   |          |
|                    | <hr/>   |          |
| Available          |         | \$ 61 00 |
| Expended           |         | 41 00    |
|                    |         | <hr/>    |
| Unexpended Balance |         | \$ 20 00 |

## TOWN POOR

|                         |          |            |
|-------------------------|----------|------------|
| Appropriated            | \$600 00 |            |
| Overdraft appropriation | 595 02   |            |
|                         |          | <hr/>      |
| Available               |          | \$1,195 02 |
| Expended                | \$860 87 |            |
| Overdraft               | 595 02   |            |
|                         |          | <hr/>      |
|                         |          | \$1,455 89 |
|                         |          | <hr/>      |
| Overdraft               |          | \$ 260 87  |

## ABATEMENTS

|                    |         |          |
|--------------------|---------|----------|
| Unexpended Balance | \$ 2 85 |          |
| Expended           | 90 66   |          |
|                    |         | <hr/>    |
| Overdraft          |         | \$ 87 81 |

## INTEREST ON TAXES.

|                 |          |
|-----------------|----------|
| Total collected | \$ 14 62 |
|-----------------|----------|

## DISCOUNT ON TAXES

|                         |          |          |
|-------------------------|----------|----------|
| Appropriated            | \$170 00 |          |
| Overdraft appropriation | 22 28    |          |
|                         |          | <hr/>    |
| Available               |          | \$192 28 |
| Expended                | \$208 65 |          |
| Overdraft               | 22 28    |          |
|                         |          | <hr/>    |
|                         |          | 230 93   |
|                         |          | <hr/>    |
| Overdraft               |          | \$ 38 65 |

## HONOR ROLL

|                    |          |
|--------------------|----------|
| Unexpended Balance | \$100 00 |
| Appropriated       | 100 00   |
|                    | <hr/>    |
| Unexpended Balance | \$200 00 |

## CEMETERY AND MEMORIAL DAY

|               |          |          |
|---------------|----------|----------|
| Unexpended    | \$ 22 91 |          |
| Appropriation | 100 00   |          |
|               |          | <hr/>    |
| Available     |          | \$122 91 |
| Expended      |          | 7 00     |
|               |          | <hr/>    |
| Unexpended    |          | \$115 91 |

## CEMETERY FUND

|                      |          |          |
|----------------------|----------|----------|
| W. E. Putnam         | \$200 00 |          |
| Interest available   |          | \$ 59 03 |
| F. W. Brown          | 100 00   |          |
| Interest available   |          | 25 76    |
| F. P. Staples        | 50 00    |          |
| Interest available   |          | 1 36     |
|                      |          | <hr/>    |
| Total Cemetery Funds | \$350 00 |          |

## BONDS — TOWN OFFICERS

|                    |         |         |
|--------------------|---------|---------|
| Unexpended Balance | \$20 00 |         |
| Appropriated       | 25 00   |         |
|                    |         | <hr/>   |
| Available          |         | \$45 00 |
| Expended           |         | \$45 00 |

## MUNICIPAL ASSOCIATION

|              |         |  |
|--------------|---------|--|
| Appropriated | \$15 00 |  |
| Expended     | 15 00   |  |

## CURRENT EXPENSE

|                     |          |            |
|---------------------|----------|------------|
| Unexpended Balance  | \$ 1 14  |            |
| Appropriated        | 1,300 00 |            |
| Department receipts | 19 86    |            |
|                     |          | <hr/>      |
| Available           |          | \$1,321 00 |
| Expended            |          | 3,482 52   |
|                     |          | <hr/>      |
| Overdraft           |          | \$2,161 52 |



## DETAIL OF EXPENDITURES

|                                                     |            |
|-----------------------------------------------------|------------|
| M. E. Hammond, Selectman, first                     | \$ 185 00  |
| E. R. Berry, Selectman, second                      | 175 00     |
| Chas. Morse, Selectman, third                       | 165 00     |
| L. G. Hutchinson, Moderator                         | 3 00       |
| Pearl Hutchinson, Town Clerk                        | 18 00      |
| Mildred Swett, Treasurer                            | 60 00      |
| Knowlton & McLeary Co., reports                     | 92 80      |
| M. E. Hammond, use of auto                          | 10 00      |
| Cora White, S. S. Committee                         | 7 50       |
| Chas. Morse, S. S. Committee                        | 7 50       |
| Alfred White, S. S. Committee                       | 7 50       |
| M. E. Hammond, sealer of weights and measures       | 5 00       |
| L. G. Hutchinson, collecting taxes                  | 200 86     |
| New England Telephone Co.                           | 29 05      |
| Howard E. Kyes                                      | 4 08       |
| Russell C. Irish, Auditor                           | 115 00     |
| Mildred Swett, discharging liens                    | 2 50       |
| Rumford Falls Trust Co., interest                   | 76 48      |
| Frank Knowlton, legal services                      | 3 40       |
| L. G. Hutchinson, legal services                    | 9 35       |
| Lights, town office                                 | 3 50       |
| W. T. Horne, wiring town office                     | 58 80      |
| E. R. Berry, running town line                      | 16 00      |
| C. N. Morse, running town line                      | 16 00      |
| Postage                                             | 19 85      |
| L. G. Hutchinson, deeds and warrants and excise tax | 23 20      |
| Books and supplies                                  | 26 58      |
| Forest Fire expense                                 | 1,868 54   |
|                                                     | <hr/>      |
| Total Expended                                      | \$3,209 49 |

## DELINQUENT TAXES

February 7, 1948

## 1947 TAXES

|                                    |            |
|------------------------------------|------------|
| As shown by Tax Collector's report | \$1,010 26 |
|------------------------------------|------------|

## 1944 TAXES

*Non-Resident*

A. M. Allen, heirs  
Bert Sanborn

\$47 85  
28 05

---

\$ 75 90

## 1942 TAXES

*Resident*

Gilbert Smith  
Otis Locklin

\$3 00  
87

---

\$ 87

## 1941 TAXES

Benjamin Black  
Fred Davis  
Laforest Hutchinson  
Leslie Hutchinson  
Otis Scannon

\$3 68  
3 00  
3 00  
3 00  
1 32

---

\$14 00

## 1940 TAXES

Wyman Kimball  
Norman Levasseur  
John Hunt  
C. S. Walker

\$3 34  
3 00  
3 00  
8 84

---

\$18 18

## 1938 TAXES

Clarence Wade  
Ed Jackson  
Alward Daley  
L. C. Fairbanks

\$3 00  
3 00  
5 50  
20 90

---

\$32 40

## 1937 TAXES

V. A. Rackliff

\$3 00

## 1936 TAXES

George Greenleaf

\$3 00

## 1935 TAXES

|                |         |
|----------------|---------|
| Philip Bernard | \$10 40 |
| Cony Crockett  | 3 00    |
| Alward Daley   | 5 10    |

---

 \$18 50

## 1934 TAXES

|                |         |
|----------------|---------|
| Henry Rancourt | \$18 25 |
|----------------|---------|

---

 \$18 25

Total Delinquent Taxes

---

 \$1,197 36

## TAX LIENS AND DEEDS SUMMARY

| Year | Balance       | Collected | Balance      |
|------|---------------|-----------|--------------|
|      | Feb. 10, 1947 |           | Feb. 7, 1948 |
| 1946 | *\$321 15     |           | \$321 15     |
| 1945 | 415 88        | \$275 52  | 140 36       |
| 1944 | 41 43         | 41 43     |              |
| 1943 | 38 40         |           | 38 40        |
| 1941 | 18 28         |           | 18 28        |
| 1940 | 6 80          | 6 80      |              |
| 1939 | 7 25          |           | 7 25         |
| 1938 | 6 60          |           | 6 60         |
| 1937 | 9 15          | 1 87      | 7 28         |
| 1936 | 7 42          |           | 7 42         |
|      | <hr/>         | <hr/>     | <hr/>        |
|      | \$872 36      | \$325 62  | \$546 74     |

\* Not legally recordable as liens until February 24, 1947.

## DETAIL OF UNPAID TAX LIENS

1946

|                    |          |
|--------------------|----------|
| C. H. Ranger, Inc. | \$196 50 |
| Lawrence Allen     | 124 65   |

---

 \$321 15

1945

|                    |         |
|--------------------|---------|
| L. L. Hutchinson   | \$35 48 |
| C. H. Ranger, Inc. | 68 88   |
| A. M. Allen, heirs | 36 00   |

---

 \$140 36

|      |                    |          |
|------|--------------------|----------|
| 1943 |                    |          |
|      | David Enman        | \$ 38 40 |
| 1941 |                    |          |
|      | Lottie Webster     | 18 28    |
| 1939 |                    |          |
|      | Cora Barnett       | 7 25     |
| 1938 |                    |          |
|      | Cora Barnett       | 6 60     |
| 1937 |                    |          |
|      | John Casey         | 7 28     |
| 1936 |                    |          |
|      | John Casey         | 7 42     |
|      |                    | <hr/>    |
|      | Total unpaid liens | \$545 74 |

## SUMMARY OF OVERDRAFTS AND EXPENDED BALANCES

(Brought forward to year 1948-49)

|                                  | Overdraft Unexpended |
|----------------------------------|----------------------|
| Current expenses                 | \$1,888 49           |
| Dental care for school children  | \$ 35 00             |
| Medical care for school children | 20 00                |
| Summer roads and bridges         | 96 33                |
| Snow removal                     | 285 09               |
| Plowing and sanding              | 244 64               |
| State Aid tools                  | 3 51                 |
| Town truck payment and interest  | 5 82                 |
| Paint and plank iron bridges     | 21 22                |
| Sand Spreader                    | 150 00               |
| Patrol                           | 22 40                |
| Town Poor                        | 260 87               |
| Common Schools                   | 12 61                |
| Repairs and equipment            | 57 72                |
| Superintendence                  | 24 15                |
| Office expense                   | 1 47                 |
| Insurance                        | 24 22                |
| Cemeteries                       | 115 91               |

|                   | Overdraft Unexpended |            |
|-------------------|----------------------|------------|
| Discount on taxes | 38 65                |            |
| Abatements        | 87 81                |            |
| Honor Roll        |                      | 200 00     |
|                   | <hr/>                |            |
|                   | \$2,692 25           | \$903 66   |
| Net overdraft     |                      | 1,788 59   |
|                   | <hr/>                |            |
|                   | \$2,692 25           | \$2,692 25 |

# Report of Tax Collector

---

## 1947 TAXES

Delinquent as of February 7, 1948

|                                      |          |
|--------------------------------------|----------|
| Heirs of Hannah Barnett              | \$ 72 96 |
| Ralph Barrett                        | 76       |
| Asa Flagg                            | 14 40    |
| Ivus Hutchinson                      | 24 70    |
| Lovid Hill                           | 13 30    |
| Gerald Piper                         | 3 00     |
| C. H. Ranger                         | 76       |
| C. H. Ranger, Inc.                   | 424 08   |
| Henry Sweetsir                       | 3 00     |
| Millard Webster                      | 64 18    |
| C. S. Walker                         | 74 86    |
| Laurence Allen                       | 49 40    |
| Wilmer Berry                         | 1 90     |
| Edwin Lee                            | 7 60     |
| Estate of A. D. McIntire (Asa Flagg) | 60 80    |
| Estate of Joseph Pellerin            | 94 62    |
| Cuvier White                         | 99 94    |

---

\$1,010 26

Respectfully submitted,

LEE G. HUTCHINSON,

*Collector.*

# Road Commissioner's Report

---

## SUMMER ROADS

|                        |         |
|------------------------|---------|
| A. E. Burgess          | \$ 5 60 |
| C. N. Morse            | 3 75    |
| Alfred Barnett         | 3 00    |
| A. D. Johnson          | 4 50    |
| Town truck             | 4 37    |
| C. N. Morse            | 22 50   |
| A. D. Johnson          | 22 50   |
| A. E. Burgess          | 24 00   |
| E. M. Hutchinson       | 12 75   |
| T. I. Hutchinson       | 9 00    |
| Town truck             | 15 75   |
| Lee Hutchinson, spikes | 4 60    |
| C. N. Morse            | 9 00    |
| A. D. Johnson          | 9 00    |
| T. I. Hutchinson       | 6 00    |
| A. E. Burgess          | 6 40    |
| Town truck             | 7 00    |
| Etta Berry, gravel     | 1 00    |
| C. N. Morse            | 23 25   |
| A. D. Johnson          | 24 00   |
| T. I. Hutchinson       | 24 00   |
| A. E. Burgess          | 25 60   |
| E. M. Hutchinson       | 18 00   |
| Town truck             | 21 00   |
| R. D. Swett, truck     | 7 00    |
| C. N. Morse, tractor   | 6 12    |
| A. E. Burgess          | 9 60    |
| C. N. Morse            | 9 00    |
| T. I. Hutchinson       | 6 00    |
| Town truck             | 3 50    |
| Lee Hutchinson, spikes | 1 20    |
| A. E. Burgess          | 32 00   |
| T. I. Hutchinson       | 30 00   |

|                               |         |
|-------------------------------|---------|
| P. K. Hutchinson              | \$18 00 |
| A. D. Virgin                  | 24 00   |
| Reginal Smith                 | 3 00    |
| E. M. Hutchinson              | 6 00    |
| A. D. Johnson                 | 6 00    |
| R. D. Swett, truck            | 14 00   |
| Hutchins & Brown, tractor     | 21 00   |
| State Highway, grader         | 12 00   |
| C. H. Towle, links            | 2 52    |
| A. E. Burgess                 | 10 40   |
| C. N. Morse                   | 9 75    |
| A. D. Johnson                 | 6 00    |
| E. M. Hutchinson              | 6 00    |
| Town truck                    | 7 00    |
| C. N. Morse                   | 6 00    |
| A. D. Johnson                 | 6 00    |
| C. S. Walker                  | 6 00    |
| A. E. Burgess                 | 6 40    |
| Town truck                    | 7 00    |
| J. A. Hutchinson, gravel      | 1 50    |
| William Flag                  | 4 50    |
| A. D. Johnson                 | 3 00    |
| A. E. Burgess                 | 4 80    |
| C. N. Morse                   | 6 75    |
| A. D. Johnson                 | 6 75    |
| T. I. Hutchinson              | 6 00    |
| C. S. Walker                  | 3 75    |
| A. E. Burgess                 | 4 00    |
| C. N. Morse, tractor          | 7 00    |
| A. E. Burgess                 | 7 20    |
| Harold Walker                 | 6 00    |
| T. I. Hutchinson              | 6 75    |
| H. W. Hansen, stringers       | 4 00    |
| C. C. Noyes, sawing stringers | 3 00    |

---

\$655 86

A. E. BURGESS,

*Road Commissioner*



## WINTER ROAD

Feb. 10, 1947 to Feb. 10, 1948

|                               |         |
|-------------------------------|---------|
| C. N. Morse, driver of truck  | \$26 40 |
| A. E. Burgess, wing           | 24 75   |
| Town Carthage, plow and truck | 74 25   |
| A. D. Johnson                 | 15 75   |
| T. I. Hutchinson              | 12 00   |
| A. E. Burgess                 | 14 60   |
| Harvey Blanchett              | 2 62    |
| C. N. Morse                   | 3 75    |
| Town truck                    | 3 50    |
| Caroll Brown                  | 2 25    |
| T. I. Hutchinson              | 30 00   |
| Lawrence Tardy                | 24 00   |
| A. E. Burgess                 | 34 40   |
| George Tardy                  | 13 50   |
| C. N. Morse                   | 6 00    |
| Town truck                    | 3 50    |
| C. N. Morse                   | 6 75    |
| A. E. Burgess                 | 6 75    |
| Town truck and plow           | 20 25   |
| A. E. Burgess                 | 9 00    |
| C. N. Morse                   | 9 60    |
| Town truck and plow           | 27 00   |
| A. E. Burgess                 | 7 50    |
| C. N. Morse                   | 8 00    |
| Town plow and truck           | 22 50   |
| A. E. Burgess                 | 8 25    |
| C. N. Morse                   | 8 80    |
| Town truck                    | 24 75   |
| Donald Bradeen, wing          | 19 50   |
| C. N. Morse                   | 20 80   |
| Town truck                    | 58 50   |
| A. E. Burgess                 | 6 00    |
| C. N. Morse                   | 6 40    |
| Town plow                     | 18 00   |
| A. E. Burgess                 | 2 25    |
| C. N. Morse                   | 18 40   |

|                       |         |
|-----------------------|---------|
| Town Carthage, plow   | \$51 75 |
| Lovid Hill, wing      | 9 00    |
| William Jackson, hand | 4 87    |

---

\$665 89

A. E. BURGESS,

*Road Commissioner.*

PLANKING AND PAINTING BRIDGES 1947

|                                        |          |
|----------------------------------------|----------|
| S. A. Getchell, plank                  | \$305 75 |
| C. H. Towle, paint                     | 82 16    |
| Joseph W. Daigneault, painting bridges | 179 00   |
| Carroll Brown, car                     | 2 00     |
| Errol Piper, paint                     | 4 87     |
| A. E. Burgess                          | 5 00     |

---

\$578 78

A. E. BURGESS,

*Road Commissioner.*

# REPORT OF AUDIT

Rumford, Maine  
February 14, 1948

*To the Inhabitants of the Town of Carthage:*

In accordance with the request of your municipal officers, I have audited the accounts of the Town of Carthage for the year ending February 7, 1948.

In my opinion, based upon such examination, the statements herewith presented fairly represents the financial condition of your town as of February 7, 1948.

## BALANCE SHEET

February 7, 1948

### *Assets*

|                                                    |            |            |
|----------------------------------------------------|------------|------------|
| Treasurer's cash account                           | \$2,475 66 |            |
| Delinquent taxes                                   | 1,197 36   |            |
| Tax liens and deeds                                | 546 74     |            |
| Cemetery Trust Funds                               | 350 00     |            |
| Snow removal equipment (unappropriated<br>balance) | 4,441 00   |            |
|                                                    | <hr/>      |            |
| Total Assets                                       |            | \$9,010 76 |

## LIABILITIES AND SURPLUS

### Liabilities:

|                                  |          |  |
|----------------------------------|----------|--|
| Withholding taxes due collector  | \$ 59 10 |  |
| Pension Fund withheld            | 23 10    |  |
| Cemetery Trust Funds borrowed    | 750 00   |  |
| Reserve for Cemetery Trust Funds | 350 00   |  |
| Notes payable                    | 6,000 00 |  |
|                                  | <hr/>    |  |

Total Liabilities \$7,182 20

|                                                                                    |            |
|------------------------------------------------------------------------------------|------------|
| Surplus                                                                            | \$3,617 15 |
| Less: Appropriation Account Balance brought forward to 1948-49 (overdraft balance) | 1,788 59   |
|                                                                                    | <hr/>      |
|                                                                                    | \$1,828 56 |
|                                                                                    | <hr/>      |
| Total Liabilities and Surplus                                                      | \$9,010 76 |

## SUMMARY OF TREASURER'S CASH ACCOUNT

|                                  |             |
|----------------------------------|-------------|
| Cash book balance, Feb. 10, 1947 | \$ 3,010 03 |
| Cash receipts for year           | 26,146 70   |
|                                  | <hr/>       |
|                                  | \$29,156 73 |
| Checks issued for year           | 26,681 07   |
|                                  | <hr/>       |
| Cash book balance, Feb. 7, 1948  | \$ 2,475 66 |

## RECONCILIATION WITH BANK

|                                                |             |
|------------------------------------------------|-------------|
| Bank balance per statement, Feb. 7, 1948       | \$ 2,211 77 |
| Plus—Cash in hands for Treasurer, Feb. 7, 1948 | 1,991 38    |
|                                                | <hr/>       |
|                                                | \$ 4,203 15 |
| Less—Checks outstanding                        | 1,727 49    |
|                                                | <hr/>       |
| Cash Book balance, Feb. 7, 1948                | \$ 2,475 66 |

A detailed audit report with comments will be available at your Selectmen's office.

Respectfully submitted,

RUSSELL C. IRISH

## South Franklin County Tuberculosis and Health Association, Inc.

---

To the citizens of Carthage, I submit the twentieth annual report of this association, covering a period from January 1, 1947 to January 1, 1948.

In a program for better community health a great deal of time and thought should be devoted to plans. While meeting the health problems of today, plans for tomorrow are being made. Health education and prevention of disease work, are basic in any good community health program.

In planning, such questions as the following must be considered. How can the greatest number of people be reached? Shall we concentrate on just a few phases of our work? Where is the greatest need? Where are we likely to obtain the best cooperation and thus achieve the greatest success? Along what lines should we do our reading and study this year to keep up with changing trends and new discoveries in public health? If we choose schools, group meetings and industries we shall reach a large number. If we cooperate with the health programs of other organizations we shall strengthen each other.

With your cooperation and that of the Division of Tuberculosis Control we are continuing to stress our tuberculosis casefinding program. We at least do one thing well, and have the satisfaction of accomplishment. Following the survey made in schools last year, we now test the subprimary children, and such other age groups as there may be reasons for doing. 29 were tested last year which is about 50%. 5 reacted. 4 contacts and three teachers were x-rayed at the clinic held at Wilton in May. 25 home visits were made to patients and contacts. Our 1948 program includes plans for x-raying industrial workers and foodhandlers.

We visited schools 18 times having 22 conferences with teachers, and 9 home visits to school children. Dr. Defoe examined 13 children at Stickney corner in the spring and 51 at Berry's Mills this fall. It is interesting to note that some corrections have been made as a result of this medical examination.

We would commend the Mother's Club on the splendid cooperation we have received. By this we have both been able to do a better job. We were glad to assist at their preschool clinic and immunizations, and hope this will be a regular feature in their program.

Another phase of our program to which we would like to give more attention, is to give prospective parents detailed instruction about the mother's care, and to help parents meet the emotional, social and physical needs of children in the preschool years. No mothers were referred for instruction; 8 home visits were made to children. An experiment is to be tried in Wilton whereby mothers will meet for instruction, on recommendation of their family physician; these will be afternoon classes and expectant mothers in Carthage are invited.

On advice of our State and National Tuberculosis Associations we filed papers of incorporation and this necessitated a reorganization. It was also decided to have the four open meetings, one in each of the four towns, under the direction of the Public Relations Committee of that town. Your meeting was interesting and well attended. When electricity is available we hope to show movies.

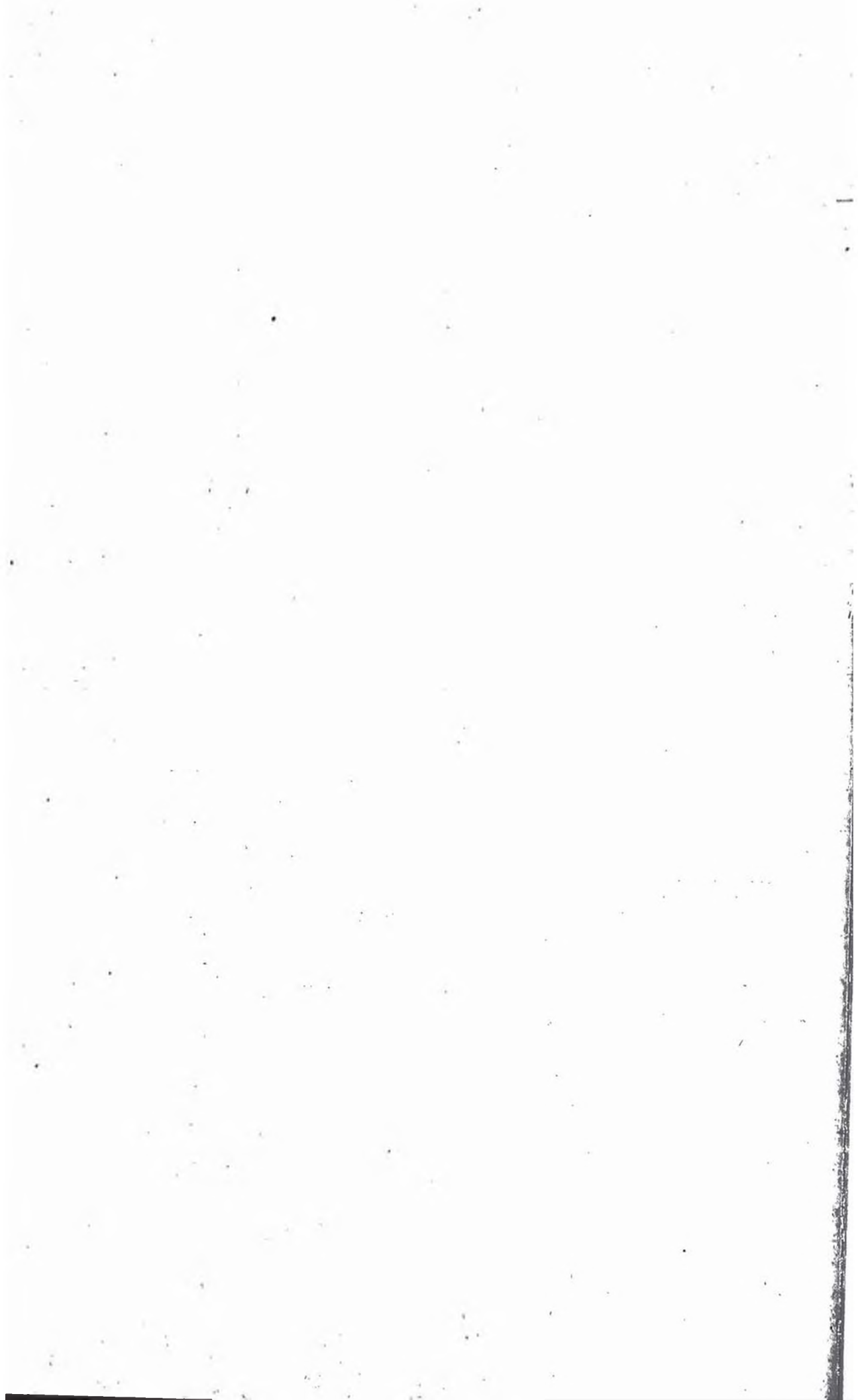
Group meetings of all kinds attended were 54. This includes professional meetings from which we hope to bring something to our work, and meetings in cooperation with other organizations in the four towns, where we hope we were able to give some assistance with their health problems.

Professional workers would be powerless and useless to any community without the interest and support of many citizens. We note 14 interviews to secure the aid of others in solving our many health problems. We are most appreciative of the understanding and encouragement that has been given by all.

Respectfully submitted,

OLIVE BONSEY, R. N.,

*Executive Nurse.*



# Treasurer's Report

Cash on hand, Feb. 10, 1947

\$3,010 03

## RECEIPTS FOR YEAR

|                                                |             |
|------------------------------------------------|-------------|
| Excise taxes                                   | \$ 367 53   |
| 1947 Taxes                                     | 11,400 93   |
| 1945 Taxes                                     | 19 44       |
| Tax liens and deeds (face amount)              | 367 75      |
| Costs, interest, etc., on tax liens            | 37 02       |
| Interest on taxes                              | 15 88       |
| Discount on taxes                              | 208 65      |
| Abatements                                     | 83 06       |
| State of Maine, snow removal                   | 973 19      |
| State of Maine, road improvement               | 599 36      |
| State of Maine, State Aid                      | 3,851 02    |
| State School fund                              | 2,175 84    |
| Rumford Falls Trust Co., Dixfield Branch, loan | 4,700 00    |
| Reimbursement, Cemetery Fund                   | 7 50        |
| Sale of culvert                                | 66 73       |
| Junk                                           | 1 00        |
| Fireworks license                              | 1 00        |
| Refund, Veterans Service Center                | 17 86       |
| Chas. Harmon, snowplow                         | 3 10        |
| Refund, Horn Motors                            | 50 95       |
| Town of Carthage, snowplow                     | 321 75      |
| Town of Carthage, truck                        | 865 17      |
| Town of Otisfield, refund                      | 11 97       |
|                                                | <hr/>       |
| Total receipts for year                        | \$26,146 70 |
|                                                | <hr/>       |
| (Receipt slips No. 1 to No. 59 inc.)           | \$29,156 73 |
| Warrants paid (No. 1 to No. 24 inc.)           | 26,681 07   |
|                                                | <hr/>       |
| Cash on hand, Feb. 7, 1948                     | \$ 2,475 66 |

Respectfully submitted,

MILDRED SWETT,

*Treasurer.*



# Report of Health Officer

---

|                |                       |   |
|----------------|-----------------------|---|
|                | Communicable Diseases |   |
| German Measles | 1 Chicken Pox         | 4 |

A. E. BURGESS,

*Health Officer.*

# Carthage School Report

---

*To the Superintending School Committee and Citizens of the Town of Carthage:*

I hereby submit my second annual report of the Carthage schools:

The past year has been one of difficulty in maintaining schools because of the continuing increasing cost of living, which is reflected in the need for higher salaries and larger amounts expended for books, supplies, fuel, and conveyance. The teacher shortage is still acute and will continue to be so for some time, and there is no relief in sight in the near future in the costs of school maintenance.

Florence McIntire, teacher at Berry Mills Grammar, resigned last Spring, and Armand Lizotte, who has completed two years' work at the University of Maine, was elected to fill the vacancy. Mildred Swett has continued as teacher of the Primary Grades at Berry Mills, and Mary Weld again is teaching the school at Stickney Corner. It is worthy of note that Mrs. Weld at the end of the Fall Term had completed thirty-five years of teaching service in the State. Few teachers in this area have contributed such long and faithful service—a record which deserves our commendation and appreciation. She gave some thought to resigning at the completion of her thirty-five years, but was persuaded to continue on. Mrs. Swett, likewise, has a long teaching career to her credit, having completed about twenty-five years, a large part of which has been in Carthage. The town is fortunate in having teachers of this caliber during these years of teacher shortage.

Statistics relative to teachers, enrollment, and attendance follow:

| TEACHERS            |                |               |
|---------------------|----------------|---------------|
| School              | Teacher        | Annual Salary |
| Berry Mills Primary | Mildred Swett  | \$1,500 00    |
| Berry Mills Grammar | Armand Lizotte | 1,620 00      |
| Stickney Corner     | Mary Weld      | 1,500 00      |

## ENROLLMENT

Enrollment by grades for the Fall Term, 1947:

| School              | S. P. | 1 | 2  | 3  | 4 | 5 | 6  | 7 | 8 | Total |
|---------------------|-------|---|----|----|---|---|----|---|---|-------|
| Berry Mills Primary | 7     | 4 | 8  | 9  |   |   |    |   |   | 28    |
| Berry Mills Grammar |       |   |    |    | 6 | 8 | 8  | 5 | 1 | 28    |
| Stickney Corner     | 2     | 2 | 2  | 2  | 3 | 0 | 2  | 1 | 4 | 18    |
|                     | 9     | 6 | 10 | 11 | 9 | 8 | 10 | 6 | 5 | 74    |

## ATTENDANCE

Attendance and Average Attendance for the Entire Year, 1947

| School              | Winter Term |              | Spring Term |              | Fall Term  |              |
|---------------------|-------------|--------------|-------------|--------------|------------|--------------|
|                     | No. Pupils  | Average Att. | No. Pupils  | Average Att. | No. Pupils | Average Att. |
| Berry Mills Primary | 19          | 16.79        | 20          | 17.97        | 28         | 23.56        |
| Berry Mills Grammar | 23          | 21.44        | 25          | 22.10        | 28         | 26.50        |
| Stickney Corney     | 14          | 12.02        | 13          | 12.73        | 18         | 16.64        |
|                     | 56          | 50.25        | 58          | 52.80        | 74         | 66.70        |

The rather rapid increase in our enrollment should be noted. This year we have sixteen more pupils enrolled than at any time last year.

Pupils not absent from school for any session during the school year ending in June, 1947, were Marion Daley, Melvin Smith, Milford Webster, and Roger Webster, all from the Stickney Corner School. Roger Webster continues to hold the record for the longest record of perfect attendance.

The following have not been absent during the Fall Term of this school year: Berry Mills Primary: Kennett Collins, Jean Virgin, Richard Johnson; Berry Mills Grammar; Charles Houghton, Charla Morse, Marie White, Nila Collins, Gail Hutchinson, Rowena Collins.

Special mention should be made also of the good scholarship records made by the following: Beryl Webster, Betty Huff, Melvin Huff, Jean Virgin, Clarence Smith, Richard Johnson, Carol Hutchinson, Marylin Skidgell, Kennett Collins, Marjorie Hill, Leota Hinkley, Nila Collins and Donald Virgin.

In addition, note should be made of the following special achievements: Clarence Smith in spelling; Elijah White in arithmetic; Leota Hinkley in Literature and spelling; Marjorie Hill in spelling.

### HIGH SCHOOL TUITION

The following students were registered at High School during the Fall Term of this year: At Dixfield High School, Daveen Hutchinson, Gary Hutchinson, Iva Hinkley, Leslie Hinkley, Emily Daley, and Kathryn Tyler; at Mexico High School, Ruby Horne and George Morse. Two of these will be removed from the list by graduation next June, and five may be added to the list as Freshmen next September if all of those completing the Eighth Grade go on to high school. Thus, we should anticipate tuition payment for ten students beginning next September. It is gratifying that among those attending high school there is no student who is failing, and several are making excellent records in their studies.

### REPAIRS AND EQUIPMENT

We have expended \$162.76 for repairs and installation of electric lights at the Berry Mills School. Wiring, fixtures, and labor by the Maine Consolidated Power Company amounted to \$88.85. Repairs at Berry Mills were \$46.06 and at Stickney Corner, \$27.85. The lighting installation at Berry Mills is still somewhat incomplete. Shades to be attached to the drop lights are still lacking, and we shall probably find that a few more fixtures and outlets will be needed. The balance remaining in this account should be sufficient to defray the cost when this additional work is done.

### FINANCES

Our total receipts this year have been \$6,405.30, which includes \$2,175.84 from the State School Fund. Expenditures have been \$6,310.35. One account has been overdrawn, an overdraft of \$12.61 in Common Schools. Unexpended balances in Repairs and Equipment, Superintendence, Office Expense, and Insurance total \$107.56, leaving an unexpended amount in school funds of \$94.95.

We have been informed by the State Department that next December we shall receive \$1,540.00 equalization money, allotted annually to towns where the amount raised by taxation for school maintenance does not approach \$1,900.00 per elementary classroom unit and if the local tax rate for school maintenance is over .02243. Local school tax rate for 1947 was .02465, and thus Carthage will receive additional State aid in 1948 in the amount of \$1,540.00. Because of this the town appropriations for school purposes will not have to be increased as otherwise it seems likely they would have to be.

The following budget is submitted for consideration at the annual town meeting:

|                         |            |
|-------------------------|------------|
| Common Schools          | \$3,000 00 |
| High School tuition     | 200 00     |
| Books and supplies      | 100 00     |
| Repairs and equipment   | 100 00     |
| Superintendence         | 234 55     |
| Office expense          | 20 00      |
| High School conveyance  | 100 00     |
| Interest on School Fund | 45 00      |
|                         | <hr/>      |
|                         | \$3,799 55 |

# Financial Statement

## COMMON SCHOOLS

### *Receipts*

|                         |          |            |
|-------------------------|----------|------------|
| Overdraft appropriation | \$ 51 73 |            |
| Appropriation           | 3,200 00 |            |
| Interest on School Fund | 45 00    |            |
| State School Fund       | 1,695 83 |            |
|                         | <hr/>    |            |
|                         |          | \$4,992 56 |

### *Expenditures*

|                    |            |            |
|--------------------|------------|------------|
| Teachers' salaries | \$3,692 00 |            |
| Janitors           | 285 25     |            |
| Cleaning           | 76 00      |            |
| Fuel               | 236 50     |            |
| Conveyance         | 663 69     |            |
| Overdrawn (1946)   | 51 73      |            |
|                    | <hr/>      |            |
|                    |            | \$5,005 17 |
|                    |            | <hr/>      |
| Overdrawn          |            | \$12 61    |

## HIGH SCHOOL TUITION

### *Receipts*

|                   |          |          |
|-------------------|----------|----------|
| Appropriation     | \$300 00 |          |
| State School Fund | 269 00   |          |
|                   | <hr/>    |          |
|                   |          | \$569 00 |

### *Expenditures*

|               |          |          |
|---------------|----------|----------|
| Paid Dixfield | \$440 00 |          |
| Paid Mexico   | 129 00   |          |
|               | <hr/>    |          |
|               |          | \$569 00 |

## BOOKS AND SUPPLIES

*Receipts*

|                   |          |          |
|-------------------|----------|----------|
| Appropriation     | \$100 00 |          |
| State School Fund | 211 01   |          |
|                   |          | <hr/>    |
|                   |          | \$311 01 |
| Expended          |          | \$311 01 |

## REPAIRS AND EQUIPMENT

*Receipts*

|                |          |          |
|----------------|----------|----------|
| Balance (1946) | \$ 20 48 |          |
| Appropriation  | 200 00   |          |
|                |          | <hr/>    |
|                |          | \$220 48 |
| Expended       |          | 162 76   |
|                |          | <hr/>    |
| Unexpended     |          | \$ 57 72 |

## SUPERINTENDENCE

*Receipts*

|                |          |          |
|----------------|----------|----------|
| Balance (1946) | \$ 19 45 |          |
| Appropriation  | 216 00   |          |
|                |          | <hr/>    |
|                |          | \$235 45 |
| Expended       |          | 211 30   |
|                |          | <hr/>    |
| Unexpended     |          | \$ 24 15 |

## OFFICE EXPENSE

*Receipts*

|                |         |         |
|----------------|---------|---------|
| Balance (1946) | \$ 1 00 |         |
| Appropriation  | 20 00   |         |
|                |         | <hr/>   |
|                |         | \$21 00 |
| Expended       |         | 19 53   |
|                |         | <hr/>   |
| Unexpended     |         | \$ 1 47 |

## INSURANCE

*Receipts*

|                |         |         |
|----------------|---------|---------|
| Balance (1946) | \$10 80 |         |
| Appropriation  | 45 00   |         |
|                |         | <hr/>   |
|                |         | \$55 80 |
| Expended       |         | 31 58   |
|                |         | <hr/>   |
| Unexpended     |         | \$24 22 |

## STATE OF MAINE

|                                   |            |            |
|-----------------------------------|------------|------------|
| Received from State School Fund   |            | \$2,175 84 |
| Transferred to Common Schools     | \$1,695 83 |            |
| Transferred to High School        | 269 00     |            |
| Transferred to Books and Supplies | 211 01     |            |
|                                   |            | <hr/>      |
|                                   |            | \$2,175 84 |

## RECAPITULATION

| Account               | Receipts   | Expend.    | Unexpend. | O'drwn.  |
|-----------------------|------------|------------|-----------|----------|
| Common Schools        | \$4,992 56 | \$5,005 17 |           | \$ 12 61 |
| High School tuition   | 569 00     | 569 00     |           |          |
| Books and Supplies    | 311 01     | 311 01     |           |          |
| Repairs and Equipment | 220 48     | 162 76     | \$ 57 72  |          |
| Superintendence       | 235 45     | 211 30     | 24 15     |          |
| Office Expense        | 21 00      | 19 53      | 1 47      |          |
| Insurance             | 55 80      | 31 58      | 24 22     |          |
|                       | <hr/>      | <hr/>      | <hr/>     | <hr/>    |
| Total unexpended      | \$6,405 30 | \$6,310 35 | \$107 56  | \$ 12 61 |
|                       |            | 94 95      |           | 94 95    |
|                       | <hr/>      | <hr/>      | <hr/>     | <hr/>    |
|                       | \$6,405 30 | \$6,405 30 | \$107 56  | \$107 56 |

## CONCLUSION

Our schools are quite well supplied with books and working materials. Travelling libraries are now in use at Stickney Corner and in the Berry Mills Grammar Room. These are secured at very small cost from the Maine State Library and do much to supplement our library material. A dozen new dictionaries, one two-volume dictionary, and a set of reference books have been added to the Grammar Room at Berry Mills.



With larger enrollment, it will be necessary before September to repair all desks that can be repaired and possibly to purchase a few new ones. Some thought has been given to replacing the wood-burning stoves with circulating oil heaters of the pot-burning type. These would cost over \$100.00 each if those of the best quality were installed. On a normal price level, it is probable that oil would cost but little, if any, more than wood, and there would be some saving in janitor expense. Should the town wish to take this action, the Repairs account would have to be increased to provide the necessary funds.

It is doubtful if the bus now in use can be depended upon much longer. It would be a wise move, in all probability, for the town to provide a new or a different one. This would be in the interests of the safety and comfort of the pupils and doubtlessly would be more economical.

This year we are planning to give rather comprehensive achievement tests in all upper grades in order to have in our files more and better information about each pupil. These tests will cover reading, spelling, history, geography, science, health, and arithmetic, and will determine according to national standards just what grade level each pupil is on in each subject. Then we can more intelligently attempt to correct deficiencies that are uncovered, and better prepare those in the two upper grades for high school entrance.

I am deeply grateful for the cooperation and interest of the members of the Superintending School Committee, the teachers, the pupils, and the citizens.

Respectfully submitted,

GERALD D. CUSHING,

*Superintendent of Schools.*