

1981

Annual Report of the Municipal Officers of the Town of Hartland, Maine For The Municipal Year 1980-1981

Hartland (Me.)

Follow this and additional works at: <https://digitalcommons.library.umaine.edu/towndocs>

Repository Citation

Hartland (Me.), "Annual Report of the Municipal Officers of the Town of Hartland, Maine For The Municipal Year 1980-1981" (1981). *Maine Town Documents*. 5682.
<https://digitalcommons.library.umaine.edu/towndocs/5682>

This Report is brought to you for free and open access by DigitalCommons@UMaine. It has been accepted for inclusion in Maine Town Documents by an authorized administrator of DigitalCommons@UMaine. For more information, please contact um.library.technical.services@maine.edu.

ANNUAL REPORT



HARTLAND

MAINE

1980-1981

TO THE INHABITANTS
OF THE TOWN OF HARTLAND

The following is the

ANNUAL REPORT

of the

Municipal Officers

of the

Town of

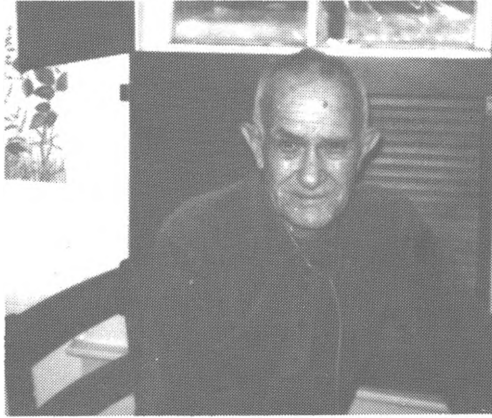
HARTLAND, MAINE

For The Municipal Year

1980-1981

Index

Dedication	3
Town Officers	5
Letter of Transmittal	7
Hartland Pollution Control Facility	8
Hartland-St. Albans Emergency Unit	10
Hartland Public Library	11
Plumbing Inspector's Report	13
Volunteer Fire Department	13
Community Development Report	14
Hartland-St. Albans Senior Citizens	16
Selectmen's Report	17
Auditor's Report	36
Pollution Abatement Plant	
Auditor's Report	41
Warrant	75



We respectfully dedicate
the 1980 Annual Report to
DR. PAUL R. BRIGGS
for his dedicated service
to the citizens of the Town of Hartland

Municipal Officers
Town of Hartland



Town Officers

Selectmen, Assessors and Overseers of the Poor
EDWARD LAUGHTON, MAURICE HALL, LeROY ROLLINS

Town Clerk and Registrar of Voters
CAROLYN CONNELL

Town Manager, Treasurer and Tax Collector
PEGGY A. MORGAN

Deputy Treasurer and Tax Collector
CAROLYN CONNELL

Health Officer
DR. ROBERT CARIGNAN

Plumbing Inspector
EDGAR WOODMAN

Fire Chief
ALVER CULLY

Fire Warden
DANA COOPER

S.A.D. No. 48 Directors

KEITH BUBAR	Term Expires 1981
ELWIN LITTLEFIELD	Term Expires 1982
RONALD TASKER	Term Expires 1983

Planning Board Members

ELWIN LITTLEFIELD	Term Expires 1981
GERALD MARTIN	Term Expires 1982
HARLAN EMERY	Term Expires 1983
EDGAR WOODMAN, Chairman	Term Expires 1984
RAYMOND MARTIN	Term Expires 1985

Budget Committee

VAUGHN STEDMAN, Chairman
DONALD HOLLISTER
BEATRICE KNOWLES
LINDA BROOKS
RAYMOND MARTIN
JOHN PLUMMER

ARLAND STEDMAN
EDGAR WOODMAN
WAYNE LIBBY
MEREDITH RANDLETT
SHIRLEY HUMPHREY
ELWIN LITTLEFIELD

Community Development Advisory Committee

DONALD HOLLISTER
HARLAN EMERY

BEATRICE KNOWLES
CLAUDETTE TASKER
ROGER MARTIN

NOTICE

March 6, 1981

Procedure of the voting for the elected offices of Selectmen,
S.A.D. No. 48 Director and Town Clerk.

Polls will be open at 10:00 a.m. and close at 8:00 p.m.

Letter of Transmittal

I would like to take this opportunity to update you on the happenings in 1980, and on what 1981 will bring.

Our present Community Development project is progressing quite well. The CD Director, Raymond Martin and Inspector, Edgar Woodman have both done an excellent job in the administration of this project.

The CD Advisory Committee, which has worked very closely with Raymond and Edgar, has played an important part in the smooth operation of this project.

The pre-application for a new project on lower Main St. has been accepted by H.U.D. and work is presently being done to get a full application accepted.

The Army Corp. study on the lower dam project is presently available for a 30-day public comment period before it is sent to Washington for approval. This project will be another upgrade of the community.

The insulation project for the offices and basement area of the Town Hall is now complete.

A pre-application for Federal Funds for complete weatherization of the Town Hall and Fire Hall has been submitted. An article for this project has been put in the Town Warrant.

Open burning has ceased at the town dump and covering procedures mandated by the State D.E.P. are being followed. Additional separation of wastes will have to take place in 1981.

Better Cable TV is still waiting on the pole easement from the utilities before the cable can be brought into Hartland. Upon receipt of this easement, we will have Cable TV.

A committee was formed for the purpose of an Annual Field Day in 1980. The committee will be very active in 1981 and anyone wishing to be on the committee is welcomed.

It has been an honor to have served you for the past 2 years.

Respectfully submitted,
Peggy A. Morgan
Town Manager

Hartland Pollution Control Facility

The operation of the Hartland Pollution Control Facility has been in operation for 4 years. It continues to exceed all expectations. In the beginning of 1980 a major process upset did occur because of changes in the wastewater characteristics that were not anticipated. Once a remedy was found for this upset the effluent quality returned to be exceptional. The facility removed over 2200 tons of sludge in 1980. This is the highest the production level has ever been.

Because of the age of the plant some major repairs will be necessary. Some of these repairs are on-going from 1980 and we expect to continue with them in 1981. The major repairs needed are as follows: Pond No. 2 individual aerator repair as necessary; overhaul of press dewatering equipment; clean and paint 1 primary clarifier and 1 sludge holding tank; and continued repair of sludge trucks.

There will be sluice gates added to the chlorine contact chamber made possible through state, federal and local funds. These gates are necessary so that this tank can be cleaned more cost effectively.

The fiberglass domes added to the secondary clarifiers last year prevented ice from forming during the extended period of cold weather in December. This was without a doubt a good test in justifying the necessity of this major improvement.

The Irving Tanning Company has recently constructed a new sulfide treatment tank as part of their pre-treatment process. Even though it has been on line for only a short period of time, the levels of dissolved sulfides in the wastewaters have been greatly improved. This should minimize odor problems originating from the treatment plant.

Because of high energy costs the individual unit processes will be studied to determine if any savings can be found. The cost of power has more than doubled since the facility became operational even though the consumption remained relatively the same.

The present sludge management process at the landfill continues to be controversial. In the last year we have seen the State and Federal governments trying to clarify the regulations governing the disposal of this solid waste. We expect to see continued clarification in the months ahead so that a more viable sludge management process can be found.

In conclusion I would like to thank the Selectmen, Town Manager, Employees and Citizens for their support in making the operation of the Hartland Pollution Control Facility such a success.

Paul F. Wintle
Superintendent

Hartland & St. Albans Emergency Unit

Cash on hand January 1980

Savings	\$2,943.64
Checking	801.88

\$3,745.52

Debits:

St. Albans 1980	\$400.00
Palmyra 1979	900.00
Ambulance Calls	3,034.35
Interest Savings Account	161.25

\$4,495.60

\$8,241.12

Credits:

Postage	\$20.00
Gas & Oil	1,168.97
Telephone	164.95
Water Co.	78.00
Office Supplies	17.58
Fuel Heat	858.61
Lic.	12.00
Medical Supplies	83.75
Attendance	2,748.00
Misc.	136.06
Land fill	172.50

\$5,460.42

Cash on hand December 1980

Savings	\$2,642.05
Checking	138.65

\$2,780.70

\$8,241.12

Ambulance Calls	180
Hartland	116
St. Albans	19
Palmyra	27
No Transports	5
Back up to Pittsfield	12
Back up to Skowhegan	1
 Total Calls	 <hr style="width: 100%;"/> 180

Hartland Public Library

Books on hand January 1980	17,297
Books Added	215
Books Discarded or Lost	47
Books on hand January 1981	17,465
Circulation Books	4,531
Circulation Magazines	341
Magazines Available	23

I would like to take this opportunity to thank all those who donated books to the library and the public for their support during the past year.

Respectfully submitted,
Grace D. Woodman, Librarian

TREASURER'S REPORT

Balance on hand 1979	\$1,403.48
Int. on Cert. of Deposit	259.78
Outbook Club	50.00
Morrison Fund	600.00
Petty Cash	144.06
Town of Hartland (assessment)	3,500.00
State Stipend	281.00
Town of St. Albans	50.00
Total Income	<hr/> \$6,288.32

Expenditures

Edith Weitzki	\$49.60
Beulah Stromback	120.00
Grace Woodman, salary	2,542.00
Books	913.55
Magazines	368.13
Hartland & St. Albans Telephone Co.	88.48
Postage	13.80
Beulah Stromback, paper envelopes	2.16
Grace Woodman, postage, supplies, travel	45.20
W.W. Grainger, Inc. tables	71.76

Rae's General Hardware, cleaning supplies	10.14	
Hartland Emporium, mop	6.59	
Printed checks	14.99	
Hartland Water Co.	47.56	
McNichol Oil Co.	158.06	
Pittsfield Coal & Oil	795.72	
Snowman's Service Ctr.	87.63	
Central Maine Power	134.64	
Total expenditures	<u>\$5,470.01</u>	
Balance on hand 12/29/80	818.31	
		<u>\$6,288.32</u>

MORRISON TRUST FUND

Balance forward 1979	\$25,100.65	
Interest	1,495.00	
Morrison Fund	4,115.81	
		<u>\$30,711.46</u>
Paid Hartland Library	600.00	
		<u>\$30,111.46</u>
Balance forward 1980		

Hartland Volunteer Fire Department

The Hartland Volunteer Fire Department has had a very busy year fighting fires for the year 1980. We had 126 fire calls from January to December. A large percentage of the fire calls were chimney fires. Due to a large number of people returning to the wood burning type of heat, the number of fire calls will undoubtedly increase even more.

We in the fire department would like to take this opportunity to ask all people who have or are going to have wood heat to please make sure that their chimneys are safe and clean and that the stoves or furnaces are hooked up to the manufacturers specifications.

Respectfully,
Linwood Humphrey
Secretary

1980 Plumbing Inspector's Report

January 1, 1980 to January 1, 1981

SUBSURFACE WASTEWATER DISPOSAL PERMITS

4-15-80	Douglas N. Cook	\$28.00
7-8-80	Michael Emery	40.00
7-28-80	Brian Duplisea	40.00
9-2-80	Henry Caron	40.00
10-6-80	A.J. Johndro	40.00

INTERNAL PLUMBING PERMITS

10-1-80	Judy Alton	6.00
10-1-80	Fred Page	3.00
11-6-80	Linwood Vanedestine	3.00

Total Collected	\$200.00
-----------------	----------

Community Development Report

Dear Citizens:

In January 1980, the Town of Hartland received a \$235,000 HUD Grant through the efforts of the Selectmen, Town Manager and the Kennebec Regional Planning Board. The Hartland Community Development Committee, comprised of five local residents of the community, also played a great part in the success of this effort.

In June a Community Development Director, Raymond E. Martin and a Technical Inspector, Edgar Woodman were hired and work started immediately on applications for rehabilitation work.

The Committee approved a total of 34 low and moderate income applications. They also accepted and reviewed 3 applications of homeowners over the guidelines in the target area and a total of 8 outside the target area of which 6 have been reviewed and approved if funds are available.

18 contracts have been signed as of January 19th with 2 more expected by January 26th. Of these contracts work is expected to be completed on 10 units and the remaining 10 units completed (with exceptions: such as outside painting) this spring.

As of this date the Community Action Program (CAP) from Skowhegan has completed work on 9 units and we hope to have them involved in 5 or 6 more units in the target area if possible. The town crew has done work on 7 units in the target area, in regards to sewer hook-ups, cellar drains, and general clean-up.

The selectmen have attended regular meetings to ask questions and to be brought up to date on this information. They have the Town Manager attend Community Development meetings whenever possible. This close relationship has been responsible for the progress to date. Participation by the homeowners taking part so far has been excellent. They have furnished some labor, materials and money.

It is expected that all 28 units of low to moderate income housing will have been written up and specification sheets developed and approved by July which will more than meet the goals agreed on with HUD.

This program has so far run very smoothly because of the help and cooperation of the Selectmen, Town Manager and the residents of the target area. The previous facts playing a large part in the Town of Hartland receiving preliminary approval for another grant of \$225,000 for a new target area (Lower Main Street).

Respectfully submitted,
Raymond E. Martin
Community Development Director

Hartland-St. Albans Senior Citizens

We have had a busy year.

We met 46 times for regular meetings.

We made a quilt, which was put on display at the Skowhegan Fair.

We held a food sale at the Hartland Town Hall.

We put on the supper for the Hartland Field Day.

We went on a foliage trip to Moosehead Lake.

We went to Augusta Armory to a State meeting.

We had Lucian Roy and Elizabeth Carrignan as speakers.

We were invited to St. Albans and Nokomis for dinners. We also sent dinners out to shut-ins when we had our dinners.

We have made phone calls to people who don't get out much.

We want to thank you for your support.

We are asking for \$400.00 this year.

Thank you,
Madeline Higgins, President
Alice Watson, Treasurer

Selectmen's Report

CONTINGENT

Appropriations:	\$6,000.00
Received:	
Gun permits	10.00
Building permits	74.00
Lien cost	626.60
Treasurer of State, reimb.	17.04
Me. Assoc. of Assessors	4.00
Jean Raymond, change loan	100.00
Peggy Morgan, change loan	100.00
Peggy Morgan, misc.	47.47
Constance Millett, change loan	100.00
Carolyn Connell, change loan	100.00
Dog licenses	60.00
Parking tickets	77.00
History books	6.00
Town of Hartland, void check	15.00
Hartland CD, supplies	158.44
State of Maine, forest fire reimb.	26.75
David Tozier, culvert	98.20
Accounts Receivable:	
Community Development	219.12
Overdrawn	538.20
	<hr/>
	\$8,377.82

Paid:	
Marks Printing House	85.10
Me. Municipal Assoc., dues	773.00
Me. Municipal Assoc., registration	58.00
Registry of Deeds, recording & discharges	540.00
Peggy Morgan, change loan	100.00
Peggy Morgan, postage & supplies	365.50
Peggy Morgan, Community Development	100.00
Peggy Morgan, H.U.D.	206.89
Jean Raymond, change loan	100.00
John Singer, audit	875.00
Michael Wiers, legal fees	725.93
Skowhegan Press, supplies	113.86
Bangor Daily News, legal ads	27.36
Morning Sentinel, legal ads	104.17
Wright's Shurway, supplies	35.12

Postmaster, postage	524.50
Randlett's, supplies	56.18
Me Assoc of Assessing Officers, dues	10.00
Carolyn Connell, change loan	100.00
Carolyn Connell, clerk's postage & supplies	249.18
Constance Millett, change loan	100.00
Royal Printing Service, town reports & ballots	960.10
U of M Portland, registration	25.00
Sec of State, license fees	72.50
New England Municipal Ctr , dues	60.00
Loring, Short & Harmon, supplies & typewriter	586.07
Victor Springer, supplies	103.47
Linda Brooks, ad	15.00
Merit Business Forms, supplies	230.77
Callaghan's & Co , supplies	33.45
Raymond Martin, CD expense	187.05
Somerset Municipal Assoc	10.00
Nokomis High School, printing	64.30
Me Welfare Director Assoc , dues	5.00
Al Boudreau, services	25.00
Hollister's Grain & Groc	28.37
Northeast Service Ctr , saw	294.00
E R Woodman, CD supplies	10.60
Branham Publishing Co	29.35
Me Town & City Clerk's Assoc , School Reg.	40.00
Steven Emery, removal of wood	50.00
Maine National Bank, box rental	6.00
Tower Publishing Co , Me Register	48.25
Bud's Red & White, turkeys	243.75
	<hr/>
	\$8,377.82

PAY TO OFFICERS

Appropriation	\$28,000.00
Received:	
Hartland Community Development	7,076.87
Accts Receivable	
Community Development	1,538.45
	<hr/>
	\$36,615.32
Paid:	
Peggy Morgan	\$11,805.96
Jean Raymond	842.40
Connie Millett	3,285.36
Carolyn Connell	4,563.00
Edward Laughton	1,500.00
Maurice Hall	1,500.00
LeRoy Rollins	1,500.00

Alver Cully	300.00	
Philip Libby	100.00	
Robert Goforth	100.00	
Carolyn Connell, town clerk	1,700.00	
Vaughn Stedman, moderator	40.00	
Ballot Clerks	785.00	
Raymond Martin, CD	5,815.32	
Edgar Woodman, CD	2,500.00	
Unexpended	<u>278.28</u>	
		\$36,615.32

SPECIAL OFFICERS		
Appropriation	\$3,000.00	
	<hr/>	\$3,000.00
Paid:		
Arnold Halford	\$1,500.00	
Clifton Sprague	1,500.00	
	<hr/>	\$3,000.00

CETA		
Received:		
Somerset County CETA	\$32,277.27	
Hartland Pollution Control	1,183.72	
Accounts Receivable		
Somerset County CETA	2,335.26	
	<hr/>	\$35,796.25
Paid:		
Arthur Douglas	\$5,872.40	
Carroll Downs, Jr	2,478.60	
Stephen Gerry	1,296.00	
Stanley Gerry	775.98	
James Dunn	129.60	
Bruce Morris, Sr.	6,028.02	
John Weir	4,771.71	
Richard Ellis	2,961.04	
Joyce Richards	4,870.12	
Lawrence Lawler	1,148.58	
Kenneth Viles	1,041.66	
Linda Gerry	793.80	

Edward Almeida	336.96	
Hartland Pollution Control	2,469.92	
Harold Moulton	43.40	
Accounts Payable		
Hartland Pollution Control	778.46	
	<hr/>	\$35,796.25

TOWN TRUCK

Appropriation	\$3,000.00	
	<hr/>	\$3,000.00

Paid:		
Jim's Mobil, gas & oil	\$81.20	
Jim's Mobil, repairs	156.53	
Hartland Grain & Grocery, gas	5.00	
Cooley's Tire Service, tires	75.38	
Darling's Auto Parts, parts	36.55	
Hartland Western Auto, parts	53.05	
Johnston & Hibbard, gas & oil	1,238.75	
Snowman's Service Center, repairs	133.10	
H & H Citgo, gas & oil	147.00	
Northeast Service Center, parts	8.70	
Hartland Emporium, supplies	2.69	
Peggy Morgan, mileage	1,000.00	
Unexpended	51.05	
	<hr/>	\$3,000.00

DUMP

Surplus:	\$15,000.00	
Received:		
Grandmaison	39.00	
	<hr/>	\$15,039.00

Paid:		
Arnold Halford, labor	\$8,459.20	
Heart of Maine, Extermination	226.00	
Lysle Gould, equipment hire	1,994.31	
Peggy Morgan, supplies	12.00	
Randlett's, fuel, oil, lube	322.71	
Hartland Emporium, supplies	10.67	
Jim's Mobil, fuel, oil, lube	31.30	
Victor Springer, supplies	64.45	
Gerry Batchelder, fill	354.50	
Serg, Inc., equipment hire	50.00	
Johnston & Hibbard, fuel, oil, lube	112.25	
Western Auto, supplies	3.39	

H & H Citgo, fuel	6.00	
Delbert Cool, gravel	19.25	
Raymond Martin, equipment hire	465.00	
Lowell Knowles, gravel	126.00	
Northeast Service, supplies	32.89	
Unexpended	\$2,749.08	
		<hr/>
		\$15,039.00

FIRE DEPARTMENT

Surplus	\$9,500.00	
Received:		
Me State Fire Fighters	12.50	
		<hr/>
		\$9,512.50
Paid:		
McNichol's Oil Service, heat	\$534.54	
Jim's Mobil, gas & oil	1,295.67	
Central Me Power	418.08	
Hartland Water Company	67.04	
Hartland & St Albans Telephone Co.	803.95	
Pittsfield Coal & Oil, heat	1,133.44	
Coston's Garage, repairs	167.65	
Fed of Firefighters, Ins	87.50	
Maine Sub-Aqua, Club supplies	4.00	
Varney's Western Auto, repairs	12.16	
Pittsfield Auto Parts, repairs	26.72	
Charles Carey, repairs	175.67	
Whelen Eng. Co., repairs	12.56	
David Crocker, labor	30.00	
Jim Smith, labor	30.00	
Hartland Emporium, supplies	20.04	
Secretary of State, license	5.00	
Victor Springer, repairs	125.63	
Fire Apparatus Service, equip.	1,031.71	
Hartland Fire Department, repairs	140.00	
Peterson's Welding, repairs	84.00	
Snowman's Service Center, heat	445.85	
Grandmaison Salvage, parts	15.00	
Alver Cully, supplies	14.74	
Davis Supply, repairs	91.80	
O'Brien Electronics, equip.	2,400.00	
Jim's Mobil, repairs	262.87	
Snowman's, repairs	2.50	
Hartland Western Auto, supplies	31.30	
Victor Springer, supplies	22.84	
Unexpended	20.24	
		<hr/>
		\$9,512.50

	O.A.B.	
Appropriation		\$3,000.00
Received:		
Town of Hartland		8,037.16
Somerset County CETA		1,978.53
Hartland Pollution Control		6,025.94
Dept. of Treasury		6.61
Hartland Community Development		433.82
Transfer to Accounts Payable		4,894.66
Accounts Receivable		
Community Development		38.22
Pollution Plant		6,254.49
		<hr/>
		\$27,669.43
Paid:		
Maine State Retirement		\$25,582.76
Hartland Pollution Control		151.40
Accounts Payable		1,818.29
Unexpended		116.98
		<hr/>
		\$27,669.43

BLUE CROSS & BLUE SHIELD

Appropriation		\$2,000.00
Town Employees		2,148.62
Somerset County CETA		581.14
Hartland Community Development		300.60
Accounts Receivable		
Pollution Plant		2,943.48
Community Development		60.12
CETA		90.18
Overdrawn		7.28
		<hr/>
		\$8,131.42
Paid:		
Maine Municipal Assoc.		\$6,538.24
Town Employees		1,472.94
Hartland Pollution		120.24
		<hr/>
		\$8,131.42

WORKMAN'S COMPENSATION

Appropriation		\$3,300.00
Somerset County CETA		2,123.20
Hartland Community Development		496.79
Hartland Pollution Plant		3,670.80
Accounts Receivable:		
CETA		124.20
		<hr/>
		\$9,714.99

Paid:		
Continental Ins. Co.	\$7,942.00	
Hartland Pollution Plant	173.39	
Unexpended	1,599.60	
	<hr/>	\$9,714.99

UNEMPLOYMENT TAX

Appropriation	\$900.00	
Received:		
Hartland Poll. Control Fac.	714.97	
Trans. to Accts. Payable	255.99	
	<hr/>	\$1,870.96
Paid:		
Me. Municipal Association	\$1,712.34	
Unexpended	158.62	
	<hr/>	\$1,870.96

INSURANCE

Appropriation	\$2,500.00	
Received:		
Peggy Morgan	104.50	
	<hr/>	\$2,604.50
Paid:		
Kenneth Hughes	\$1,375.00	
Me. Municipal Assoc.	648.76	
Miles Carpenter	319.00	
Unexpended	261.74	
	<hr/>	\$2,604.50

CIVIL DEFENSE

Carried	\$200.00	
	<hr/>	\$200.00
Carry	\$200.00	
	<hr/>	\$200.00

LIBRARY

Received:		
Revenue Sharing	\$3,500.00	
Treasurer of State	281.00	
	<hr/>	\$3,781.00

Paid:		
Hartland Library	\$3,781.00	
	<hr/>	\$3,781.00

HARTLAND AND ST. ALBANS EMERGENCY AMBULANCE UNIT		
Appropriation	\$600.00	
	<hr/>	\$600.00
Paid:		
Hartland & St. Albans Emergency Unit	\$600.00	
	<hr/>	\$600.00

NORTH KENNEBEC REGIONAL PLANNING		
Appropriation	\$687.00	
	<hr/>	\$687.00
Paid:		
North Kennebec Regional Planning	\$687.00	
	<hr/>	\$687.00

SENIOR CITIZEN'S HEALTH PROGRAM		
Appropriation	\$50.00	
	<hr/>	\$50.00
Paid:		
Kennebec Valley Health Clinic	\$50.00	
	<hr/>	\$50.00

HARTLAND & ST. ALBANS SENIOR CITIZENS		
Appropriation	\$400.00	
	<hr/>	\$400.00
Paid:		
Hartland & St. Albans Senior Citizens	\$400.00	
	<hr/>	\$400.00

PLUMBING INSPECTION

Received:		
Edgar Woodman	\$161.00	
		\$161.00
Paid:		
Edgar Woodman	\$114.42	
Treasurer of State	46.58	
		\$161.00

SEWER MAINTENANCE

Appropriation	\$3,000.00	
		\$3,000.00
Paid:		
W.H. Shurtleff	\$54.01	
Alver Cully, labor	3.10	
Dana Cooper, labor	3.10	
Hartland Emporium, supplies	11.49	
Western Auto, supplies	1.29	
Arthur Douglas, labor	502.12	
Cianbro Corporation, cold patch	136.60	
Me. Cement Products, supplies	149.25	
Raymond Martin, repairs	1,553.85	
Bowman & Littlefield, pipe	380.00	
Unexpended	205.19	
		\$3,000.00

POLLUTION ABATEMENT

Appropriation	\$5,096.00	
Federal Revenue Sharing	19,904.00	
		\$25,000.00
Paid:		
Hartland Pollution Control Facility	\$25,000.00	
		\$25,000.00

PTCC SWIMMING POOL

Revenue Sharing	\$3,500.00	
Received:		
Central Me. Power	14.78	
Eric Seekins	91.44	
Overdrawn	259.40	
		\$3,865.62

Paid:		
Eric Seekins, labor	\$1,435.20	
Richard Thompson, labor	1,435.20	
Hartland Water Co.	108.92	
Hartland Emporium	82.71	
Tapley Pool	26.85	
Central Me. Power	228.91	
Hartland Western Auto	21.19	
W.H. Shurtleff	468.64	
Jim's Mobil	8.00	
Christine Burrill	60.00	
		<hr/>
		\$3,865.62

HYDRANT RENTAL

Appropriation	\$13,300.00	
		<hr/>
		\$13,300.00
Paid:		
Hartland Water Company	\$13,300.00	
		<hr/>
		\$13,300.00

CHRISTMAS LIGHTS

Appropriation	\$500.00	
		<hr/>
		\$500.00
Paid:		
Central Me. Power	\$148.16	
LaVerdiere's, bulbs	61.12	
Randlett's, bulbs	22.38	
Hartland Emporium, bulbs	22.68	
Gilman's, supplies	12.72	
Unexpended	232.94	
		<hr/>
		\$500.00

STREET LIGHTS

Appropriation	\$8,500.00	
		<hr/>
		\$8,500.00
Paid:		
Central Me. Power	\$8,155.99	
Unexpended	344.01	
		<hr/>
		\$8,500.00

NORTH STREET DRAINAGE		
Appropriation	\$1,000.00	
	<hr/>	\$1,000.00
Paid:		
Arland Stedman, equip. hire	\$697.50	
Lysle Gould, equip. hire	237.19	
D. Leavitt	15.00	
Delbert Cool	3.50	
Unexpended	46.81	
	<hr/>	\$1,000.00
TREE REMOVAL		
Appropriation	\$600.00	
	<hr/>	\$600.00
Unexpended	\$600.00	
	<hr/>	\$600.00
RED NETWORK		
Appropriation	\$100.00	
	<hr/>	\$100.00
Paid:		
Hartland Fire Department	\$100.00	
	<hr/>	\$100.00
WINTER ROADS		
Appropriation	\$13,000.00	
Excise	25,000.00	
Received:		
State of Maine	2,915.00	
Dennis Gould	143.76	
Lysle Gould, salt	2,474.71	
	<hr/>	\$43,533.47
Paid:		
Lysle Gould, contract	\$35,900.59	
Carroll Deans, salt	9.93	
Davis Supply, salt	104.50	
Hartland Emporium, supplies	23.40	
Randlett's, supplies	1.99	
Hartland Western Auto, supplies	2.59	
Robert Lunt, labor	2,129.68	
George Wyman, labor	1,182.60	

Arthur Douglas, labor	922.19	
Town of Cornville, plowing	300.00	
Kennebec Rental	60.00	
W. H. Shurtleff, salt	2,474.71	
Maine Gas, supplies	12.38	
Jim's Mobil, supplies	23.00	
Unexpended	385.91	
		<hr/>
		\$45,533.47

ROADS & BRIDGES

Revenue Sharing	\$30,000.00	
Interest	6,660.96	
Treasurer of State	39.50	
Overdrawn	783.70	
		<hr/>
		\$37,484.16

Paid:		
Robert Lunt, labor	\$923.10	
George Wyman, labor	1,087.83	
Arland Stedman, equip. hire	3,940.15	
Lysle Gould, equip. hire	3,108.09	
L.E. Knowles, gravel	45.00	
Delbert Cool, gravel	58.25	
C. Davis, gravel	32.00	
Duane Whitney, traffic paint	321.00	
Farrin Bros., gravel	67.20	
W. H. Shurtleff, chloride & culverts	4,549.66	
Leonard Olson, gravel	406.77	
Keith Gould, equip. rental	232.40	
Cianbro Corporation, hot top	22,627.91	
Ellis Additon, equip. hire	85.00	
		<hr/>
		\$37,484.16

VILLAGE STREETS

Appropriation	\$6,000.00	
		<hr/>
		\$6,000.00
Paid:		
Arthur Douglas, labor	\$289.60	
Cianbro Corporation	2,510.67	
W. H. Shurtleff, culverts	2,000.00	
Robert Lunt, labor	376.48	
George Wyman, labor	622.08	
Lysle Gould	35.38	
Hartland Fire Dept.	100.00	
Unexpended	65.79	
		<hr/>
		\$6,000.00

	SIDEWALKS	
Appropriation	\$3,000.00	
	<hr/>	
		\$3,000.00
Paid:		
L.A. Gould	\$685.23	
A.V. Stedman	38.04	
Cianbro	1,705.00	
Unexpended	571.73	
	<hr/>	
		\$3,000.00

	T.R.I.F.	
Accounts Receivable:		
State of Maine	\$2,750.74	
	<hr/>	
		\$2,750.74
Paid:		
Arland Stedman	\$935.57	
Lysle Gould	1,484.01	
Malcolm Chipman	331.16	
	<hr/>	
		\$2,750.74

	STATE AID CONSTRUCTION	
Appropriation	\$8,796.00	
Carried	8,796.00	
	<hr/>	
		\$17,592.00
Carry	\$17,592.00	
	<hr/>	
		\$17,592.00

	SCHOOL PATROL	
Appropriation	\$1,100.00	
	<hr/>	
		\$1,100.00
Paid:		
Janice Rich	\$900.00	
Unexpended	200.00	
	<hr/>	
		\$1,100.00

	TOWN HALL	
Appropriation	\$7,000.00	
Received:		
Hall Rental	300.00	
	<hr/>	
		\$7,300.00

Paid:	
McNichol Oil	\$555.05
Hartland Grain & Groc., supplies	18.79
Hartland Emporium, supplies	133.74
Hartland Water Co.	75.00
Randlett's & Son, supplies	215.15
Hartland & St. Albans Telephone Co.	705.78
Central Maine Power Co.	717.30
Pittsfield Coal & Oil, heat	2,371.81
Snowman's Service Ctr., heat	588.81
Thuts Express	9.75
Victor Springer, supplies	950.06
Victor Springer, supplies	793.72
W W Grainger, Inc., supplies	53.77
Western Auto, supplies	12.65
Marks Printing House	98.62
	<hr/>
	\$7,300.00

CEMETERIES

Appropriation	\$2,000.00
Received:	
Donald Shorey, burials	520.00
Nelson Smart Funeral home, burial	65.00
G. Robinson, burial	65.00
Thelma Stanhope	3.00
Trans. from sale of lots	440.00
Trans. from Perp. Care Int.	3,739.02
Accounts Receivable	
Donald Shorey, Inc.	325.00
	<hr/>
	\$7,157.02

Paid:	
Robert Lunt, wages	\$2,819.12
George Wyman, wages	3,122.55
Randlett's, supplies	2.74
Hartland Emporium, supplies	38.37
Lysle Gould	12.00
Maurice Hall, repairs	148.90
Brown & White Paper Co., flags	172.00
Western Auto, mowers	289.81
Victor Springer	13.00
Peggy Morgan, supplies	20.11
Johnston & Hibbard, oil & gas	229.18
Halford Flower Shop	50.00
Hollister, grass seed	13.54
Kenneth Hughes & Son Ins., bond	20.00
Unexpended	205.70
	<hr/>

\$7,157.02

PERPETUAL CARE INTEREST

Received:		
First Penn Corp.	\$22.44	
Republic of Texas	194.88	
Bangor Hydro Electric	80.50	
New England Merchants	176.00	
Southwest Gas Corp.	286.25	
Ford Motor Credit Co.	355.00	
Central Maine Power Co.	630.80	
Maine National Bank	1,993.15	
		<hr/>
		\$3,739.02
Transferred to Cemeteries	\$3,739.02	
		<hr/>
		\$3,739.02

SALE OF LOTS

Due from General Fund	\$260.00	
Received:		
Gerald Robinson	35.00	
Eleanor Pomeroy	35.00	
Lottie Robinson	35.00	
Elizabeth Winchester	20.00	
Arthur Douglas	20.00	
Loren Butler	35.00	
		<hr/>
		\$440.00
Transferred to Cemeteries	\$440.00	
		<hr/>
		\$440.00

INTEREST

Received:	6,659.00	
Overdrafted	529.91	
		<hr/>
		\$7,188.91
Paid:		
Maine National Bank	\$7,188.91	
		<hr/>
		\$7,188.91

SNOWMOBILE ACCOUNT

Received:		
Treasurer of State	\$384.00	
		<hr/>
		\$384.00
Accounts Payable:		
Smokey's Angels	\$384.00	
		<hr/>
		\$384.00

GENERAL ASSISTANCE		
Balance Carried	\$1,796.00	
Appropriation	4,707.00	
Reimbursements	1,242.14	
Accounts Receivable:		
State of Maine	154.13	
Overdrawn	427.78	
		<hr/>
		\$8,327.05
Paid:		
Case #1		
James Corson	\$160.00	
Case #2		
Hartland Water Co.	19.01	
Central Maine Power	126.79	
Case #3		
McNichol Oil	42.25	
Pittsfield Coal & Oil	400.50	
Berry's Pharmacy	125.69	
Hartland Water Co.	34.48	
Case #4		
McNichol Oil	116.33	
Central Maine Power Co.	86.08	
Hartland Telephone Co.	22.92	
Pittsfield Coal & Oil	46.50	
Case #5		
Berry's Pharmacy	15.70	
Case #6		
Waterville Savings	67.40	
McNichol Oil	138.17	
Hartland Telephone Co.	44.62	
Hartland Water Co.	22.11	
Central Maine Power	64.68	
Case #7		
McNichol Oil	44.25	
Case #8		
McNichol Oil	67.25	
L.A. Dysart Gas Co.	23.00	
Pittsfield Coal & Oil	46.50	

Case #9	
McNichol Oil	175.00
Central Maine Power	400.34
Hartland Water Co.	66.33
Hartland Telephone Co.	274.59
Pittsfield Coal & Oil	528.90
L.A. Dysart Gas Co.	147.66
Snowman's Service Ctr., oil	282.20
Case #10	
Randlett's & Son	83.00
Case #11	
Pittsfield Coal & Oil	53.00
Snowman's Service Ctr.	112.55
Central Maine Power	173.11
Folson's Gas Service	25.00
Case #12	
Pittsfield Coal & Oil	98.00
Wright's Shurway	23.20
Greg Lovely	100.00
Case #13	
Berry's Pharmacy	14.80
Greg Lovely	223.62
Wright's Shurway	25.00
Case #14	
Richard Bryant	280.00
Central Maine Power	83.59
Case #15	
Pittsfield Coal & Oil	246.00
Hartland Water Co.	44.22
Ford Motor Co.	183.20
Case #16	
Pittsfield Coal & Oil	50.00
Wright's Shurway	20.00
James Corson	60.00
Case #17	
Sebasticook Hospital	35.00
Case #18	
Wright's Shurway	77.62

Case #19	
TJ's Pizza	2.42
Case #20	
Wright's Shurway	146.89
Dead River Gas Co.	25.00
Case #21	
Wright's Shurway	20.00
Case #22	
Pittsfield Coal & Oil	52.00
Wright's Shurway	20.00
Case #23	
Paul Holiday	150.00
Case #24	
Greg Lovely	540.00
Berry's Pharmacy	8.80
Case #25	
Berry's Pharmacy	21.29
Johnston & Hibbard	30.00
Pittsfield Coal & Oil	26.00
Wright's Shurway	24.23
Case #26	
Randlett's & Son	101.92
Case #27	
Depositors Trust	147.60
Case #28	
Hartland Emporium	24.07
Victor Springer	120.70
Byron Ballard	27.30
Case #29	
Snowman's Service Ctr.	114.89
Case #30	
LaVerdiere's Drug Store	4.85
L. Viles	55.00
Case #31	
Pittsfield Coal & Oil	104.00
Case #32	
Pittsfield Coal & Oil	52.00

Case #33	
Pittsfield Coal & Oil	53.20
Snowman's Service Ctr.	111.75
Wright's Shurway	49.89
Case #34	
Wright's Shurway	19.85
Snowman's Service Ctr.	8.85
Berry's Pharmacy	6.03
Case #35	
Snowman's Service Ctr.	427.93
Case #36	
Snowman's Service Ctr.	53.50
Case #37	
Snowman's Service Ctr.	52.52
Case #38	
Snowman's Service Ctr.	54.72
Case #39	
Wright's Shurway	50.00
Case #40	
Wright's Shurway	24.19
Case #41	
Dot Richards	22.50

Auditor's Report

January 28, 1981

Board of Selectmen
Hartland
Maine

Gentlemen:

Pursuant to your request, the records pertaining to the Pollution Abatement Plant have been audited for the period January 1, 1980, to December 31, 1980, inclusive.

The examination was conducted in accordance with generally accepted auditing standards applicable in the circumstances and included all procedures which were deemed necessary. Insofar as could be determined within the scope of the examination, the financial transactions pertaining to the Pollution Abatement Plant appear to have been appropriately handled.

The financial statements incorporated in this report fairly present the financial position of the Pollution Abatement Plant at December 31, 1980, and the result of its operations for the year then ended based on cash transactions. This basis has been applied in a manner consistent with that of the preceding year.

All of which is respectfully submitted.

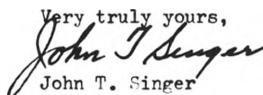
Very truly yours,

John T. Singer

EXHIBIT A

TOWN OF HARTLAND
POLLUTION ABATEMENT
COMPARATIVE BALANCE SHEET
DECEMBER 31, 1980

	December 31, 1980	December 31, 1979
<u>ASSETS</u>		
CASH:		
Operations	\$ 633.88	\$10,669.30
Construction	372.79	372.79
Cost Replacement	<u>150.58</u>	<u>2,860.22</u>
	\$ 1,157.25	\$13,902.31
ACCOUNTS RECEIVABLE	<u>37,573.14</u>	
TOTAL ASSETS	<u><u>\$38,730.39</u></u>	<u><u>\$13,902.31</u></u>
<u>LIABILITIES</u>		
Accounts Payable	\$22,950.58	
Notes Payable	99,708.91	\$85,389.25
<u>RESERVES</u>		
Authorized Expenditures	(84,452.47)	10,669.30
Construction Advance	372.79	(85,016.46)
Cost Replacement	<u>150.58</u>	<u>2,860.22</u>
	(83,929.10)	(71,486.94)
TOTAL LIABILITIES & RESERVES	<u><u>38,730.39</u></u>	<u><u>\$13,902.31</u></u>

EXHIBIT B

TOWN OF HARTLAND

POLLUTION ABATEMENT

STATEMENT OF CASH RECEIPTS AND DISBURSEMENTS-OPERATIONS

YEAR ENDED DECEMBER 31, 1980

CASH BALANCE, January 1, 1980		\$ 10,669.30
ADD-CASH RECEIPTS:		
Irving Tanning Company	\$315,701.41	
Proceeds from Notes Issued	88,208.91	
Federal Government	52,500.00	
State of Maine	28,636.00	
Town of Hartland	23,568.70	
C.E.T.A.	15,674.87	
Back Charges	1,257.49	
Old Checks Charged Off	<u>176.14</u>	
Total Cash Receipts		\$525,723.52
Transferred from Cost Replacement		<u>15,192.22</u>
TOTAL AVAILABLE		\$551,585.04
DEDUCT - TRANSFERS AND CASH DISBURSEMENTS:		
Transfers:		
Construction Reserve	\$122,919.16	
Cash Disbursements:		
Electricity	\$106,324.22	
Labor	100,166.62	
Notes Payable	73,889.25	
Chemicals	61,945.51	
Disposal Site	19,667.43	
Repairs	19,531.89	
Interest	8,109.02	
Pond #1	6,989.71	
Insurance	5,100.00	
Supplies	4,766.12	
General	4,553.20	
Heat	4,328.85	
Sand Removal	3,996.83	
Contingent	2,642.25	
Fuel, Oil and Lube	2,125.96	
Small Equipment	1,568.36	
Cleaning Supplies	1,219.99	
Telephone	<u>1,106.79</u>	
Total Cash Disbursements		\$428,032.00
Total Transfers & Cash Disbursements		<u>\$550,951.16</u>
CASH BALANCE, December 31, 1980		<u><u>633.88</u></u>

SCHEDULE A-1

TOWN OF HARTLAND
POLLUTION ABATEMENT
ACCOUNTS RECEIVABLE
DECEMBER 31, 1980

Irving Tanning Co.

\$37,573.14

EXHIBIT C

TOWN OF HARTLAND
POLLUTION ABATEMENT
STATEMENT OF CASH RECEIPTS & DISBURSEMENTS-COST REPLACEMENT
YEAR ENDED DECEMBER 31, 1980

BALANCE, January 1, 1980		\$ 2,860.22
ADD: CASH RECEIPTS		
Proceeds from Notes Issued	\$12,371.21	
Interest on Savings	<u>111.37</u>	
TOTAL CASH RECEIPTS		<u>12,482.58</u>
TOTAL AVAILABLE		\$15,342.80
DEDUCT:		
Transfers to Operational Cash		<u>15,192.22</u>
BALANCE, December 31, 1980		\$ 150.58

SCHEDULE A-2

TOWN OF HARTLAND

POLLUTION ABATEMENT

ACCOUNTS PAYABLE

DECEMBER 31, 1980

Town of Hartland	Social Security	\$3,393.09	
	Unemployment	162.16	
	Contingent	243.75	
	Blue Cross & Blue Shield	3,304.20	
	Withholding	<u>2,861.40</u>	\$ 9,964.60
Federal Withholding Tax			935.40
State Withholding Tax			363.65
Central Maine Power Co.			10,111.69
Northeast Lab Service			32.00
St. Johnsbury Trucking			18.28
Gilman Electric Supply			65.37
Loring, Short and Harmon			33.41
Snowman's Service Center			979.05
Ayer Sales, Inc.			87.50
TEK Bearing Co., Inc.			76.98
Hollisters			18.96
Irving Tanning Co.			2.62
Arnold Machinery Co.			249.50
VWR Scientific Co.			<u>11.57</u>
			<u>\$22,950.58</u>

SCHEDULE A-3

TOWN OF HARTLAND

POLLUTION ABATEMENT

NOTES PAYABLE

DECEMBER 31, 1980

Maine National Bank	11.61%	3/16/81	\$45,900.00
Maine National Bank	9.04%	2/17/81	15,821.21
Maine National Bank	7.61%	1/ 8/81	26,487.70
Maine National Bank	7.91%	1/27/81 Construction	<u>11,500.00</u>
			<u>\$99,708.91</u>

Auditor's Report

Board of Selectmen
Hartland
Maine

January 28, 1981

Gentlemen:

In accordance with Title 30, Section 5253, MRSA 1964 and at your request, the records of the Town of Hartland have been audited for the period January 1, 1980, to December 31, 1980, inclusive.

The financial and related statements of the General Fund, Special Revenue Fund, Debt Fund and Trust and Reserve Fund arising from cash transactions have been examined. The examination was made in accordance with generally accepted auditing standards and accordingly included such tests of the accounting records and such other auditing procedures as was considered necessary in the circumstances.

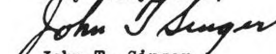
The aforementioned statements do not give effect to accrued items except in certain instances. Accordingly, the statements do not present the financial position and the results of operations in conformity with generally accepted accounting principles.

In our opinion, the financial statements referred to above present fairly the assets and liabilities arising from cash transactions of the General Fund, Special Revenue Fund, Debt Fund and Trust and Reserve Fund of the Town of Hartland at December 31, 1980, and the revenues collected and expenditures paid during the year then ended, on the basis described in Notes to Financial Statements which basis has been applied in a manner consistent with that of the preceding year.

The accompanying supplemental schedules and related information presented on pages 9 through 37 are not necessary for a fair presentation of the financial statements, but are presented as additional supplementary data. This information has been subjected to the test and other auditing procedures applied in the examination of the financial statements mentioned above and appears to be fairly stated in all material respects in relation to the financial statements taken as a whole.

In connection with the examination, tests were performed of compliance with the Revenue Sharing and Antirecession Fiscal Assistance Acts and regulations as required by Sections II. C.3. and III. C.3. of the Audit Guide and Standards for Revenue Sharing and Antirecession Fiscal Assistance Fund Recipients (Guide) issued by the Office of Revenue Sharing, U.S. Department of the Treasury and compared the data on Bureau of Census Form R.S.-9 to records of the Town of Hartland as required by Section II. C.4. of the "Guide". Based on these procedures, no instance of noncompliance with the regulations was noted and no material differences between Census data on Form R.S.-9 and the Town of Hartland for the year ended December 31, 1980, were noted.

Very truly yours,


John T. Singer

TOWN OF HARTLAND

SUMMARY OF POLICIES

The Maine statutes require that every municipality shall have a post audit of its records each year and that the report of audit shall contain: letter of transmittal, comments, comparative balance sheet, analysis of surplus, statement of departmental operations, statement of valuation, assessment and collections, statement of cash receipts and disbursements and reconciliation of cash balance. Such other statements as the auditor desires may be included in the report as well.

It is the policy of the Town of Hartland to print the report of audit in its entirety in its Annual Town Report which is dispensed to all of the voters of the Town at the time of the Annual Town Meeting which, by statute, must be held in March of each year. Others may obtain copies of the Annual Town Report upon request.

Authority for appropriations for the running of the municipality and the method by which they are to be funded is given by vote of the voters at the Annual Town Meeting. The warrants for the County Tax and the Town's share of the S.A.D. #48 appropriation are given by the County Commissioners and Board of Trustees of School Administrative District #48 respectively.

The assessment of taxes resulting from establishing the valuation of both real and personal property and establishing the rate is the responsibility of the Board of Assessors. The Board of Assessors also has the authority to include in the assessment of taxes an amount for overlay of an amount not to exceed 5% of the total appropriations and the responsibility for approving all abatements. They are autonomous in these respects.

Receipts from State Revenue Sharing and the Business Inventory Tax Reimbursement are used to reduce the amount necessary to raise by taxation of real property to finance appropriations made at the Annual Town Meeting.

It is customary to finance certain specific appropriations as voted at the Annual Town Meeting through transfers from Unappropriated Surplus and Excise Tax receipts.

Each year at the Annual Town Meeting the total amount of the entitlement payments received from Federal Revenue Sharing during the preceding fiscal year plus the interest earned on the investment of these funds is appropriated.

BASIS OF ACCOUNTING

With the exception of property taxes, revenue is recorded when received in cash. Property taxes are recorded when committed, since they are measurable and are due within the fiscal year. At the year end certain ascertainable items of revenue, such as reimbursable items of expense, which are due but have not been received, are accrued with the proper accounts being credited.

Expenditures are recorded on a cash basis with the charges being made to the accounts when the warrants are authorized by the Board of Selectmen. At the year end, certain items which are owing and have not been paid are accrued with the proper accounts being charged.

No record is made of fixed assets.

GENERAL FUND

It should be noted that there is a contingent liability of \$1,000 plus the plaintiff's attorney's fee in the case of Frank Lawler Jr. vs Town of Hartland and Edward Laughton and Leroy Rollins and Michael Petit. Although the Town has been served, the case has not been heard yet. This is a general relief case.

An examination of the records of the Tax Collector indicated that of the Total Assessment Charged to the Tax Collector of \$323,591.90 collections of \$161,207.40 or 49.82% were realized. The largest single taxpayer whose taxes represent 38.37% of the total tax commitment had not paid his taxes at the year end. Because of this, the tax anticipation note of \$100,000 was outstanding at the year end and is a current liability of the General Fund.

Uncollected 1979 taxes totaling \$15,664.52 which were assessed against real estate were secured by tax liens. These are self foreclosing liens and mature eighteen months after they are put on. All liens were recorded by the Register of Deeds in Somerset County and waivers were obtained on partial payments accepted.

The State Revenue Sharing Reserve account had a balance of \$397.09 at the beginning of the year. Receipts during the year amounted to \$21,509.71 and \$18,965.33 was applied against the amount necessary to be raised by taxation. This left a balance of \$2,041.47 at the year end.

Excise tax receipts of \$25,000 were appropriated to the Winter Roads account at the Annual Town Meeting and the unallocated balance of \$8,023.39 was transferred to unappropriated surplus.

Unexpended balances in certain appropriation accounts totaling \$17,812.16 were carried forward to the ensuing year for expenditure.

The unappropriated surplus account was increased by \$2,595.15 as a result of the years operations and totaled \$66,253.98 at the year end. The principal items contributing to this increase were the overlay, unallocated excise taxes, and net unexpended lapsed balances in certain appropriation accounts. Appropriations from surplus of \$24,500 were authorized at the Annual Town Meeting.

SPECIAL REVENUE FUND

This fund is wholly comprised of Federal Revenue Sharing accounts.

A review of these accounts indicated that all of the entitlement payments had been maintained separate from and not comingled with General Fund cash. All entitlement payments were immediately converted into interest bearing certificates of deposit upon receipt and all appropriations were authorized by a vote at the Annual Town Meeting after the required budget hearings had been held. No funds were used, obligated or appropriated more than 24 months after the end of the entitlement period.

The balance of the Reserve represents the entitlement payments for the 1980 fiscal year plus the interest earned on certificates of deposits which

matured during the year. All of the balance of the Reserve is invested in certificates of deposit and the total amount is available for appropriation at the Annual Town Meeting.

DEBT FUND

Bonds totaling \$1,400,000 were issued in 1977 under the authority and guarantee of the Maine Industrial Building Authority. The proceeds from this bond issue were used by the Irving Tanning Company for industrial construction. Under the terms of the agreement, the Irving Tanning Company will pay the interest on the bonds as it becomes due and annually on December 1, 1979, through December 1, 1992, inclusive will pay \$100,000 to retire the bonds as they mature.

Interest on the bond issue was paid in the year under examination and the bonds that matured on December 1, 1980 totaling \$100,000 were retired.

TRUST AND RESERVE FUND

New cemetery perpetual care funds totaling \$600 were accepted at the last Annual Town Meeting.

All investments of the trust funds are carried at cost.

The amount of \$3,739.02 was transferred to the Maintenance of Cemeteries account leaving unallocated earned income of \$317.81. The unexpended income balance plus interest earned during the year totaling \$163.85 in the Ministerial and School Fund was transferred to the school account.

The Pine Grove Cemetery Fund had income of \$281.31 during the year and transferred \$440 to the Maintenance of Cemeteries account leaving a balance of \$1,808.12 in the fund at the year end.

The amount of \$1,516.21 was transferred from the General Fund to the Trust and Reserve Fund during the year so that now none of the monies of the Trust and Reserve Fund are in the cash of the General Fund.

EXHIBIT A

TOWN OF HARTLAND
COMPARATIVE BALANCE SHEET

	December 31, 1980	December 31, 1979	December 31, 1980	December 31, 1979
	<u>GENERAL FUND</u>			
<u>ASSETS</u>			<u>LIABILITIES</u>	
Cash	\$ 17,197.99	\$ 37,704.83	Accounts Payable	\$ 21,065.66
Accounts Receivable	16,987.26	14,549.69	Tax Anticipation	\$ 5,150.65
			Notes Payable	100,000.00
Taxes Receivable	\$162,758.66	\$37,435.95	Due Trust & Reserve Funds	1,516.21
Less-Reserve for				
Losses	149.85	162,608.81	Due Debt Fund	56.41
Tax Liens	10,749.64	7,374.55	RESERVES	\$ 121,122.07
Tax Acquired Property	585.98	268.63	Authorized Expenditures	26,494.06
			State Revenue Sharing	397.09
			SURPLUS	
			Inappropriated	66,253.98
TOTAL-GENERAL FUND	\$ <u>208,129.68</u>	\$ <u>97,273.25</u>	TOTAL-GENERAL FUND	\$ <u>208,129.68</u>
				\$ <u>97,273.25</u>
			<u>SPECIAL REVENUE FUND</u>	
<u>ASSETS</u>			<u>RESERVE</u>	
Investments	\$ <u>50,889.57</u>	\$ <u>58,256.74</u>	Federal Revenue Sharing	\$ 50,889.57
				\$ 58,256.74
			<u>DEBT FUND</u>	
<u>ASSETS</u>			<u>LIABILITIES</u>	
Accounts Receivable	\$1,200,000.00	\$1,300,000.00	Reserve	56.41
Due from General Fund	56.41	56.41	Funds Payable	\$1,200,000.00
TOTAL-DEBT FUND	\$ <u>1,200,056.41</u>	\$ <u>1,300,056.41</u>	TOTAL-DEBT FUND	\$ <u>1,200,056.41</u>
				\$ <u>1,300,056.41</u>
			<u>TRUST AND RESERVE FUND</u>	
<u>ASSETS</u>			<u>LIABILITIES</u>	
Time Deposits	\$ 37,642.47	\$ 36,390.27	Principals	\$ 26,234.02
Investments	23,728.35	23,728.35	Appreciation of	\$25,634.02
			Principals	30,916.77
Due from General Fund		1,516.21	Pending Acceptance by Town	600.00
			Unexpended Income	525.33
			RESERVES	
			Water Fund	\$ 2,094.10
			Pine Grove Cemetery	\$ 1,991.90
TOTAL-TRUST AND RESERVE FUND	\$ <u>61,370.82</u>	\$ <u>61,634.83</u>	TOTAL-TRUST AND RESERVE FUND	\$ <u>61,370.82</u>
				\$ <u>61,634.83</u>

See: Notes to Financial Statements

EXHIBIT B**TOWN OF HARTLAND****GENERAL FUND****STATEMENT OF REVENUES, EXPENDITURES AND TRANSFERS**

YEAR ENDED DECEMBER 31, 1980

	<u>Budget</u>	<u>Actual</u>	<u>Over (Under) Budget</u>	<u>Actual Prior Year</u>
REVENUE				
Property Taxes	\$309,273.30	\$321,848.69	\$ 12,575.39	\$317,454.41
Excise Taxes	25,000.00	33,023.39	8,023.39	33,161.79
Intergovernmental Revenue	110,759.93	114,872.32	4,112.39	104,480.70
Sale of Real Estate				1,873.32
Fees and Permits		920.22	920.22	2,226.23
Interest and Costs		6,796.32	6,796.32	2,704.22
Miscellaneous		4,562.87	4,562.87	4,743.76
Total Revenues	<u>\$445,033.23</u>	<u>\$482,023.81</u>	<u>\$ 36,990.58</u>	<u>\$466,644.43</u>
TRANSFERS FROM OTHER FUNDS	67,907.83	67,907.83		45,571.46
Total Revenues and Transfers	<u>\$512,941.06</u>	<u>\$549,931.64</u>	<u>\$ 36,990.58</u>	<u>\$512,215.89</u>
EXPENDITURES				
General Government	\$ 91,016.07	\$ 93,127.82	\$ 2,111.75	\$ 70,070.53
Protection	36,300.00	35,548.25	(751.75)	51,095.31
Health and Sanitation	43,211.00	40,295.73	(2,915.27)	44,475.30
Highways and Bridges	105,603.70	92,698.13	(12,905.57)	85,880.58
Library	3,781.00	3,781.00		3,781.00
Cemeteries	6,179.02	6,951.32	772.30	5,888.74
Charities	7,576.20	8,327.05	750.85	4,732.27
Debt and Interest	500.00	7,188.91	6,688.91	2,388.04
Special Assessments	220,072.26	220,052.10	(20.16)	191,096.57
Unclassified	<u>47,699.87</u>	<u>45,964.63</u>	<u>(1,735.24)</u>	<u>70,190.53</u>
Total Expenditures	<u>\$561,939.12</u>	<u>\$553,934.94</u>	<u>\$ (8,004.18)</u>	<u>\$529,598.87</u>
EXCESS (DEFICIENCY) OF REVENUE AND TRANSFERS OVER EXPENDITURES	<u>\$ 48,998.06</u>	<u>\$ (4,003.30)</u>	<u>\$ 44,994.76</u>	<u>\$ (17,382.98)</u>

See: Notes to Financial Statements

EXHIBIT C

TOWN OF HARTLAND
GENERAL FUND
STATEMENT OF CHANGE IN FUND BALANCE
YEAR ENDED DECEMBER 31, 1980

BALANCE, January 1, 1980		\$ 63,658.83
INCREASE:		
Excess of Revenues and Transfers over Expenditures	\$ 44,994.76	
Less - Reserve for Authorized Expenditures	17,812.16	
	<u>\$ 27,182.60</u>	
Adjustment of Beginning Balance of Reserve for Authorized Expenditures	2.00	
Total Increase		\$ 27,184.60
DECREASE:		
Appropriations	\$ 24,500.00	
Adjustment of Reserve for Losses on Taxes Receivable	89.45	
	<u>89.45</u>	
Total Decrease		<u>\$ 24,589.45</u>
NET INCREASE		\$ 2,595.15
BALANCE, December 31, 1980		<u><u>\$ 66,253.98</u></u>

See: Notes to Financial Statements

EXHIBIT D

TOWN OF HARTLAND
SPECIAL REVENUE FUND
STATEMENT OF CHANGE IN FUND BALANCE
YEAR ENDED DECEMBER 31, 1980

	<u>Total</u>	<u>1980</u>	<u>1979</u>
BALANCE: January 1, 1980	\$ <u>58,256.74</u>		\$ <u>58,256.74</u>
ADD:			
Entitlement Receipts	49,503.00	\$ 49,503.00	
Interest Income	<u>6,694.79</u>	<u>1,386.57</u>	<u>5,308.22</u>
TOTAL ADDITIONS	\$ <u>56,197.79</u>	\$ <u>50,889.57</u>	\$ <u>5,308.22</u>
TOTAL	<u>\$114,454.53</u>	<u>\$ 50,889.57</u>	<u>\$ 63,564.96</u>
DEDUCT - APPROPRIATIONS			
Roads and Bridges	36,660.96		36,660.96
Pollution Abatement	19,904.00		19,904.00
P.T.C.C. Swimming Pool	3,500.00		3,500.00
Hartland Free Library	<u>3,500.00</u>		<u>3,500.00</u>
TOTAL APPROPRIATIONS	\$ <u>63,564.96</u>		\$ <u>63,564.96</u>
BALANCE: December 31, 1980	<u>\$ 50,889.57</u>	<u>\$ 50,889.57</u>	<u> -- </u>

See: Notes to Financial Statements

EXHIBIT E

TOWN OF HARTLAND
TRUST AND RESERVE FUNDS
STATEMENT OF CHANGE IN FUND BALANCE
YEAR ENDED DECEMBER 31, 1980

	<u>Total</u>	<u>Cemetery Perpetual Care Funds</u>	<u>Ministerial and School Fund</u>	<u>Fine Grove Cemetery Reserve</u>	<u>Water Fund Reserv</u>
BALANCE, January 1, 1980	\$ <u>29,592.73</u>	\$ <u>24,605.79</u>	\$ <u>1,028.23</u>	\$ <u>1,966.81</u>	\$ <u>1,991.9</u>
ADDITIONS:					
New Funds Accepted	600.00	600.00			
Interest Income	203.51			101.31	102.2
Sale of Lots	180.00			180.00	
	<u> </u>	<u> </u>	<u> </u>	<u> </u>	<u> </u>
TOTAL ADDITIONS	\$ <u>983.51</u>	\$ <u>600.00</u>	\$ <u>--</u>	\$ <u>281.31</u>	\$ <u>102.2</u>
TOTAL	\$ <u>30,576.24</u>	\$ <u>25,205.79</u>	\$ <u>1,028.23</u>	\$ <u>2,248.12</u>	\$ <u>2,094.1</u>
DEDUCT:					
Expenditures	<u>440.00</u>	<u> </u>	<u> </u>	<u>440.00</u>	<u> </u>
BALANCE, December 31, 1980	\$ <u><u>30,136.24</u></u>	\$ <u><u>25,205.79</u></u>	\$ <u><u>1,028.23</u></u>	\$ <u><u>1,808.12</u></u>	\$ <u><u>2,094.1</u></u>

See: Notes to Financial Statements

SCHEDULE 1

TOWN OF HARTLAND

GENERAL FUND

STATEMENT OF CASH RECEIPTS & DISBURSEMENTS

YEAR ENDED DECEMBER 31, 1980

CASH BALANCE, January 1, 1980		\$ 37,704.83
ADD: CASH RECEIPTS:		
Tax Collections:		
Current Year	\$161,233.69	
Prior Years	<u>19,654.10</u>	
Total Tax Collections		\$180,887.79
Tax Liens		11,882.30
Tax Acquired Property		90.35
Excise Taxes		33,023.39
Departmental		144,256.22
Other Receipts:		
Tax Anticipation Notes	100,000.00	
State Revenue Sharing	21,509.71	
Accounts Receivable	14,395.82	
Business Inventory Reimbursement	7,605.72	
Cemetery Trust Fund Income	3,637.71	
Tree Growth Reimbursement	751.16	
Tennis Court Reimbursement	308.97	
Sale of Lots	180.00	
Miscellaneous Interest	<u>158.95</u>	
Total Other Receipts		<u>\$148,548.04</u>
TOTAL CASH RECEIPTS		<u>\$518,688.09</u>
TOTAL AVAILABLE		\$556,392.92
DEDUCT - CASH DISBURSEMENTS:		
Departmental	538,019.93	
Trust Fund Reimbursement	1,150.00	
Tax Overpayment Refunded	<u>25.00</u>	
TOTAL CASH DISBURSEMENTS		<u>\$539,194.93</u>
CASH BALANCE, December 31, 1980		<u>\$ 17,197.99</u>

See: Notes to Financial Statements

TOWN OF HARTLAND
GENERAL FUND
RECONCILIATION OF CASH
DECEMBER 31, 1980

Maine National Bank

Balance per Bank Statement	\$ 38,442.90
Add: Checks Applicable to 1981	296.48
Total	<u>\$ 38,739.38</u>
Deduct - Outstanding Checks	<u>21,741.39</u>
Balance of Checking Account	<u>16,997.99</u>
Change Fund in Cash	200.00
Cash Balance	<u><u>\$ 17,197.99</u></u>

See: Notes to Financial Statements

SCHEDULE 3

TOWN OF HARTLAND

GENERAL FUND

STATEMENT OF DEPARTMENTAL OPERATIONS

YEAR ENDED DECEMBER 31, 1980

	<u>Balance Forward</u>	<u>Appropriations</u>	<u>Other Credits</u>	<u>Total</u>	<u>Expenditures</u>	<u>Balances Lapsed</u>	<u>Carried Forward</u>
						<u>Overdrafts</u> <u>Unexpended</u>	
GENERAL GOVERNMENT							
Contingent		2 6,000.00	\$ 1,839.62	\$ 7,839.62	\$ 8,377.82	\$ 538.20	
Officers Salaries		28,000.00	8,615.32	36,615.32	36,337.04		\$ 278.28
Town Hall		7,000.00	300.00	7,300.00			
Insurance		2,500.00	104.50	2,604.50	2,342.76		261.74
C.E.T.A.			35,796.25	35,796.25	35,796.25		
C.E.T.A. Mileage					25.00	25.00	
Town Truck		3,000.00		3,000.00	2,948.95		51.05
PROTECTION							
Fire Department			9,512.50	9,512.50	9,492.26		20.24
Street Lights		8,500.00		8,500.00	8,155.99		344.01
Hydrant Rental		13,300.00		13,300.00	13,300.00		
Special Officers		3,000.00		3,000.00	3,000.00		
Red Network		100.00		100.00	100.00		
Hartland-St. Albans Emergency Unit		600.00		600.00	600.00		
Civil Defense	\$200.00			200.00			\$ 200.00
Traffic Guides		1,100.00		1,100.00	900.00		200.00
HEALTH AND SANITATION							
Town Dump			15,039.00	15,039.00	12,289.92		2,749.08
Senior Citizens Health Clinic		50.00		50.00			
Pollution Abatement		5,096.00	19,904.00	25,000.00	25,000.00		
Sewer Maintenance		3,000.00		3,000.00	2,794.81		205.19
Plumbing Inspection			161.00	161.00	161.00		
HIGHWAYS AND BRIDGES							
Winter Roads		13,000.00	30,533.47	43,533.47	43,147.56		385.91
Roads and Bridges			36,700.46	36,700.46	37,484.16	783.70	
Village Streets		6,000.00		6,000.00	5,934.21		65.79
North Street Drainage		1,000.00		1,000.00	953.19		46.81
State Aid Road Construction	8,796.00	8,796.00		17,592.00			17,592.00
Sidewalk Repairs		3,000.00		3,000.00	2,428.27		571.73
Town Road Improvement Fund			2,750.74	2,750.74	2,750.74		
Tree Removal		600.00		600.00			600.00
LIBRARY							
Hartland Free Library			3,781.00	3,781.00	3,781.00		

SCHEDULE 3
Cont'd

TOWN OF HARTLAND

	<u>Balances Forward</u>	<u>Appropriations</u>	<u>Other Credits</u>	<u>Total</u>	<u>Expenditures</u>	<u>Lapsed Overdrafts</u>	<u>Balances Unexpended</u>	<u>Carried Forward</u>
CEMETERIES								
Maintenance		\$ 2,000.00	\$ 5,157.02	\$ 7,157.02	\$ 6,951.32		\$ 205.70	
CHARITIES								
General Assistance	\$ 1,798.00	4,707.00	1,396.27	7,901.27	8,329.05	\$ 427.78		
DEBT AND INTEREST								
Interest		500.00	6,160.29	6,660.29	7,188.91	528.62		
SPECIAL ASSESSMENT								
County Tax		15,192.00		15,192.00	15,192.00			
SAD # 48	15,700.06	189,016.35	163.85	204,880.26	204,860.10			\$ 20.16
UNCLASSIFIED								
Social Security		3,000.00	24,669.43	27,669.43	27,552.45		116.98	
Workmen's Compensation		3,300.00	6,414.99	9,714.99	8,115.39		1,599.60	
Health Insurance		2,000.00	6,124.14	8,124.14	8,131.42	7.28		
Christmas Lighting		500.00		500.00	267.06		232.94	
Northern Kennebec Regional Planning Com.		687.00		687.00	687.00			
Unemployment Tax		900.00	970.96	1,870.96	1,712.34		158.62	
Senior Citizens Hartland-St. Albans		400.00		400.00	400.00			
P.T.C.C. Swimming Pool			3,606.22	3,606.22	3,865.62			
Smokey's Angels Snowmobile Club			384.00	384.00	384.00	259.40		
TOTAL	<u>\$26,494.06</u>	<u>\$335,844.35</u>	<u>\$220,085.03</u>	<u>\$582,423.44</u>	<u>\$559,087.59</u>	<u>\$2,569.98</u>	<u>\$8,093.67</u>	<u>\$17,812.16</u>

See: Notes to Financial Statements

SCHEDULE 4

TOWN OF HARTLAND

GENERAL FUND

STATEMENT OF VALUATION, ASSESSMENT AND COLLECTION

YEAR ENDED DECEMBER 31, 1980

VALUATION:	<u>Total</u>	<u>Resident</u>	<u>Non Resident</u>
Real Estate			
Personal	\$19,930,013.00	\$14,502,513.00	\$ 5,427,500.00
	<u>4,494,235.00</u>	<u>4,284,435.00</u>	<u>209,800.00</u>
TOTAL VALUATION	<u>\$24,424,248.00</u>	<u>\$18,786,948.00</u>	<u>\$ 5,637,300.00</u>
ASSESSMENT CHARGED TO COLLECTOR:			
Tax Commitment:			
Valuation x Rate $24,424,248.00 \times .0132$			\$ 322,400.07
Fractional Loss			<u>.06</u>
Tax Commitment			\$ 322,400.01
Supplemental Taxes			<u>1,191.89</u>
TOTAL ASSESSMENT CHARGED TO COLLECTOR			\$ 323,591.90
COLLECTION AND CREDITS:			
Cash Collections			
Less:		\$ 161,233.69	
Overpayments Refunded	\$ 25.00		
Transferred to Interest	<u>1.29</u>	<u>26.29</u>	
Net Cash Collections		\$ 161,207.40	
Abatements		<u>522.98</u>	
TOTAL COLLECTIONS AND CREDITS			\$ 161,730.38
1980 TAXES RECEIVABLE, December 31, 1980			<u>\$ 161,861.52</u>

COMPUTATION OF ASSESSMENT

TAX COMMITMENT, as above		\$ 322,400.01
REQUIREMENTS:		
Appropriations		
County Tax	\$ 131,636.00	
School Administrative District	<u>15,192.00</u>	
	<u>189,016.35</u>	
TOTAL REQUIREMENTS		\$ 335,844.35
DEDUCT:		
Estimated State Revenue Sharing		
Business Inventory Tax Reimbursement	<u>18,965.33</u>	
	<u>7,605.72</u>	
TOTAL DEDUCTIONS		\$ 26,571.05
NET REQUIREMENTS		\$ 309,273.30
OVERLAY		<u>\$ 13,126.71</u>

See: Notes to Financial Statements

SCHEDULE 5

TOWN OF HARTLAND

GENERAL FUND

STATEMENT OF CHANGES IN UNAPPROPRIATED SURPLUS

YEAR ENDED DECEMBER 31, 1980

UNAPPROPRIATED SURPLUS, January 1, 1980 \$63,658.83

INCREASE:

Appropriation Accounts:

Unexpended Balances \$8,093.67
Overdrafts 2,569.98

Net Appropriation Accounts \$ 5,523.69
Overlay 13,126.71
Unallocated Excise Taxes 8,023.39
Supplemental Taxes 1,302.88
Tree Growth Reimbursement 751.16
Tennis Court Reimbursement 308.97
Adjustment to General Assistance 2.00

TOTAL INCREASE \$29,038.80

DECREASE:

Appropriations:

Town Dump 15,000.00
Fire Department 9,500.00

Total Appropriations \$24,500.00
Abatements 1,854.20
Adjustment of Reserve for Losses 89.45

TOTAL DECREASE \$26,443.65

NET INCREASE \$ 2,595.15

UNAPPROPRIATED SURPLUS, December 31, 1980 \$66,253.98

See: Notes to Financial Statements

SCHEDULE 6

TOWN OF HARTLAND

GENERAL FUND

STATEMENT OF ACCOUNTS RECEIVABLE

DECEMBER 31, 1980

Irving Tanning Co. - Fire Department		\$ 35.00
Somerset County C.E.T.A.:		
1979 Balance	\$ 118.87	
1980 Balance	2,335.26	
Health Insurance	90.18	
Workmen's Comp.	<u>124.20</u>	2,668.51
Hartland Community Development:		
Salaries	1,538.45	
O.A.B.	38.22	
Health Insurance	60.12	
Miscellaneous	<u>219.12</u>	1,855.91
Hartland Pollution Plant:		
O.A.B.	6,254.49	
Health Insurance	<u>2,943.48</u>	9,197.97
State of Maine:		
General Assistance	154.13	
T.R.I.F.	<u>2,750.74</u>	2,904.87
Donald Shorey, Inc.		<u>325.00</u>
TOTAL		<u>\$16,987.26</u>

See: Notes to Financial Statements

SCHEDULE 7

TOWN OF HARTLAND

GENERAL FUND

STATEMENT OF CHANGES IN TAXES RECEIVABLE

YEAR ENDED DECEMBER 31, 1980

	<u>Total</u>	<u>Current Year</u>	<u>Prior Years</u>
BALANCE, January 1, 1980	\$ <u>37,435.95</u>		\$ <u>37,435.95</u>
ADD:			
Tax Commitment	322,400.01	\$322,400.01	
Supplemental Taxes	<u>1,302.88</u>	<u>1,191.89</u>	<u>110.99</u>
TOTAL ADDITIONS	<u>\$323,702.89</u>	<u>\$323,591.90</u>	<u>\$ 110.99</u>
TOTAL	<u>\$361,138.84</u>	<u>\$323,591.90</u>	<u>\$ 37,546.94</u>
DEDUCT:			
Cash Collections	180,887.79	161,233.69	19,654.10
Less:			
Refunds	25.00	25.00	
Transferred to Interest	<u>1.33</u>	<u>1.29</u>	<u>.04</u>
Net Cash Collections	<u>\$180,861.46</u>	<u>\$161,207.40</u>	<u>\$ 19,654.06</u>
Transferred to Tax Liens	15,664.52		15,664.52
Abatements	<u>1,854.20</u>	<u>522.98</u>	<u>1,331.22</u>
TOTAL DEDUCTIONS	<u>\$198,380.18</u>	<u>\$161,730.38</u>	<u>\$ 36,649.80</u>
TAXES RECEIVABLE, December 31, 1980	<u><u>\$162,758.66</u></u>	<u><u>\$161,861.52</u></u>	<u><u>\$ 897.14</u></u>

See: Notes to Financial Statements

SCHEDULE 8

TOWN OF HARTLAND
GENERAL FUND
STATEMENT OF CHANGES IN TAX LIENS
YEAR ENDED DECEMBER 31, 1980

TAX LIENS, January 1, 1980		\$ 7,374.55
ADD- TAX LIENS ACQUIRED:		
Transferred from Taxes Receivable		<u>15,664.52</u>
TOTAL		\$23,039.07
DEDUCT:		
Payments Received	\$11,882.30	
Less - Transferred to Interest	<u>.57</u>	
Net Payments	\$11,881.73	
Transferred to Tax Acquired Property	<u>407.70</u>	
TOTAL DEDUCTIONS		<u>\$12,289.43</u>
TAX LIENS, December 31, 1980		<u><u>\$10,749.64</u></u>

See: Notes to Financial Statements

SCHEDULE 9

TOWN OF HARTLAND

GENERAL FUND

STATEMENT OF CHANGES IN TAX ACQUIRED PROPERTY

YEAR ENDED DECEMBER 31, 1980

TAX ACQUIRED PROPERTY, January 1, 1980	\$ 268.63
ADD - PROPERTY ACQUIRED:	
Transferred from Tax Liens	<u>407.70</u>
TOTAL	\$ 676.33
DEDUCT:	
Sales	<u>90.35</u>
TAX ACQUIRED PROPERTY, December 31, 1980	<u><u>\$ 585.98*</u></u>

*Detail

Badger, Kermit	\$192.16
Basford, Bernard	15.90
Deering, A. B. Sr.	31.20
, Norris	54.40
Duplissa, Maggie, Adm.	8.50
Hinckley, Edward	5.40
Long, D. R. Enterprises	204.72
Perkins, Wilce heirs	5.41
Randall, Robert & Winnifred	14.59
Rice, Phillip	19.50
Sock, Nellie D.	32.00
Starbird, Leroy	<u>2.20</u>
TOTAL	<u><u>\$585.98</u></u>

See: Notes to Financial Statements

SCHEDULE 11

TOWN OF HARTLAND
GENERAL FUND
STATEMENT OF TAX ANTICIPATION NOTES PAYABLE
DECEMBER 31, 1980

Maine National Bank	9.3%	<u>\$100,000.00</u>
---------------------	------	---------------------

SCHEDULE 10

TOWN OF HARTLAND
GENERAL FUND
STATEMENT OF ACCOUNTS PAYABLE
DECEMBER 31, 1980

S.A.D. #48	\$18,084.91
O.A.B. (Social Security)	1,818.29
Hartland Pollution Plant	778.46
Smokey's Angels	<u>384.00</u>
TOTAL	<u>\$21,065.66</u>

See: Notes to Financial Statements

SCHEDULE 12

TOWN OF HARTLAND

GENERAL FUND

STATEMENT OF CHANGE IN STATE REVENUE SHARING RESERVE

YEAR ENDED DECEMBER 31, 1980

BALANCE, January 1, 1980	\$ 397.09
ADD: Receipts from State	<u>21,509.71</u>
TOTAL AVAILABLE	21,906.80
DEDUCT: Applied to Appropriations	<u>18,965.33</u>
BALANCE, December 31, 1980	<u><u>\$ 2,941.47</u></u>

SCHEDULE 13

TOWN OF HARTLAND

SPECIAL REVENUE FUND

STATEMENT OF INVESTMENTS

DECEMBER 31, 1980

INVESTMENTS:

Time Certificates of Deposit:

Maine National Bank #35806	9.117%	\$12,319.00
Maine National Bank #34386	12.534%	12,981.79
Maine National Bank #35834	14.167%	12,546.00
Maine National Bank #21861	14.167%	13,042.78
TOTAL		<u><u>\$50,889.57</u></u>

See: Notes to Financial Statements

SCHEDULE 14

TOWN OF HARTLAND

SPECIAL REVENUE FUND

ANALYSIS OF EXPENDITURES

YEAR ENDED DECEMBER 31, 1980

	<u>Budget</u>	<u>Total</u>	<u>Personal Services</u>	<u>Commodities</u>	<u>Contractual</u>	<u>Grants</u>
Roads & Bridges	\$36,660.96	\$36,660.96	\$2,353.25	\$4,641.54	\$29,666.17	
P.T.C.C. Swimming Pool	3,500.00	3,500.00	2,870.40	629.60		
Pollution Abatement	19,904.00	19,904.00			19,904.00	
Hartland Free Library	3,500.00	3,500.00				\$3,500.00
TOTAL	<u>\$63,564.96</u>	<u>\$63,564.96</u>	<u>\$5,223.65</u>	<u>\$5,271.14</u>	<u>\$49,570.17</u>	<u>\$3,500.00</u>

See: Notes to Financial Statements

SCHEDULE 15

TOWN OF HARTLAND
DEBT FUND
STATEMENT OF BONDS PAYABLE
DECEMBER 31, 1980

	Date of Maturity	Amount
Industrial Construction Issued 12/1/77 8%	12/1/81	\$ 100,000.00
	12/1/82	100,000.00
	12/1/83	100,000.00
	12/1/84	100,000.00
	12/1/85	100,000.00
	12/1/86	100,000.00
	12/1/87	100,000.00
	12/1/88	100,000.00
	12/1/89	100,000.00
	12/1/90	100,000.00
	12/1/91	100,000.00
	12/1/92	100,000.00
		<u>\$1,200,000.00</u>

SCHEDULE 16

TOWN OF HARTLAND
DEBT FUND
STATEMENT OF ACCOUNTS RECEIVABLE
DECEMBER 31, 1980

Irving Tanning Company	<u>\$1,200,000.00</u>
------------------------	-----------------------

See: Notes to Financial Statements

SCHEDULE 17

TOWN OF HARTLAND
TRUST AND RESERVE FUND
STATEMENT OF TIME DEPOSITS
DECEMBER 31, 1980

CEMETERY PERPETUAL CARE FUNDS:		
Maine National Bank #94-0-02324-5		\$ 1,541.00
Skowhegan Savings Bank #63443		7,760.52
Maine National Bank CD#21760	7.75% 12/12/86	3,562.50
Maine National Bank CD#21740	7.75% 8/14/86	1,950.00
Maine National Bank CD#21748	7.75% 9/26/86	17,898.00
		<hr/>
TOTAL CEMETERY PERPETUAL CARE FUNDS		\$32,712.02
MINISTERIAL AND SCHOOL FUND:		
Skowhegan Savings Bank #50313		1,028.23
PINE GROVE CEMETERY FUND:		
Maine National Bank #94-0-02324-5		1,808.12
WATER FUND		
Maine National Bank #94-0-900087		<u>2,094.10</u>
TOTAL		<u>\$37,642.47</u>

See: Notes to Financial Statements

SCHEDULE 18

TOWN OF HARTLAND
TRUST AND RESERVE FUND
STATEMENT OF INVESTMENTS
DECEMBER 31, 1980

CEMETERY PERPETUAL CARE FUNDS:

4 Shares Bangor Hydro Electric Co. 7% Pfd.	\$ 572.00
13 Shares Bangor Hydro Electric Co. 4% & 4 1/2%	1,099.75
100 Shares New England Merchants Bank of Boston	1,665.13
102 Shares The First Pennsylvania Corp.	1,650.00
380 Shares Central Maine Power Co.	7,069.98
174 Shares Republic of Texas Corp.	3,523.00
250 Shares Southwest Gas	4,187.50
Ford Motor Credit Co. 8 7/8% 1990	<u>3,960.99</u>
TOTAL	<u>\$23,728.35</u>

SCHEDULE 19

TOWN OF HARTLAND
TRUST AND RESERVE FUNDS
STATEMENT OF INCOME AND EXPENDITURES
YEAR ENDED DECEMBER 31, 1980

	<u>Total</u>	<u>Cemetery Perpetual Care</u>	<u>Ministerial and School</u>
BALANCE, January 1, 1980	\$ 525.33	\$ 419.12	\$ 106.21
ADD - Interest and Dividends	<u>3,695.35</u>	<u>3,637.71</u>	<u>57.64</u>
TOTAL	\$4,220.68	\$4,056.83	\$ 163.85
DEDUCT - Expenditures	<u>3,902.87</u>	<u>3,739.02</u>	<u>163.85</u>
BALANCE, December 31, 1980	<u>\$ 317.81</u>	<u>\$ 317.81</u>	<u>\$ --</u>

See: Notes to Financial Statements

TOWN OF HARTLAND

GENERAL FUND

DETAIL OF 1980 TAXES RECEIVABLE

DECEMBER 31, 1980

Archer, Truman & Ryoko	\$ 13.20 •
Ballard, Elmer & Joanne	163.94
Bates, George & Deborah	301.22 •
Berry, Lewis	122.76
Bizeau, Joseph & Gertrude	313.63
Boulanger, Jeffrey & Roxanne	206.05
Bowden, David & Myrtle	227.04
Boyd, Wayne	78.94
Braley, Lewis & Lillian	273.90
, Thomas	225.19
Friarwood Estates	1,247.40 •
Brooks, Foster Jr. & Jacqueline	258.85
Brown, Ralph & Bonnie	469.39
, Robert	57.16
Bubar, Ronald & Barbara	143.09 •
Butler, Priscilla	118.67
Campbell, Eldon L.	192.19
, Harry	104.99
Carr, Earl L.	106.26
, Roger	75.20
, Scott & Sherry	117.74
Carron, Henry & Sandra	290.40
Cates, Lloyd	107.97
, Sue H.	298.72
Chadbourne, Barry	10.56
Chamberlin, Basil	19.80
, Harry & Patricia	160.77
, Patricia	1.32
Charrier, Kathleen	270.60
Chipman, Malcolm	80.52
Clark, Wilf	111.94
Clement, Byron	118.80
Clowry, Floyd	143.22
Clukey, Carroll & Charlotte	109.51
Cooper, Harold	92.93
Corson, James & Geraldine	241.56
Coston, F. Larry	93.53 •
Crowell, Anson & Liesolotte	152.72
Curtis, Norman Sr.	392.17
Cyr, Thomas & Paula	333.96

- Paid after Close of Books
- Partial Payment after Close of Books

TOWN OF HARTLAND

Darge, Rhenda & Sandra	\$ 153.25
Davis, Herbert	147.31
, James	79.20
, Richard	25.24
Downs, Carroll & Donna	16.36
Dubay, Roland & Jane	203.41 •
Dunn, James	99.00
Dunton, Kerry	26.40
Dyer, Fannie	174.10
Elliott, Lewis	195.71
, Lewis & Arlene	220.44
Ellis, Lena	92.14
Elm Hoop Co.	99.00
Emery, Leon	282.22
, Richard & Joyce	252.12
, Steven	224.93
Estes, Robert	259.78 •
Gifford, Lillian & Scott	74.84
Glidden, Joseph & Gladys	246.05
Godsoe, Earl	118.80
, Ronald	174.11
Gould, Keith & Shirley	196.28
, Lyle & Bonnie	258.72 •
Greeley, Susan	220.84
Greene, Paul & Kathleen	263.74
Gregoire, Mildred	199.65
Gregnon, Arthur & Rodney	6.60 •
Ham, Everett W.	2.70
Hanson, Gary	846.25 ••
Hayden, Durwood & Marjorie	218.46
Holmes, Harold & Anna	101.77
, Ronald	180.44
Hopkins, Paul	146.52
Hughes, Earl & Paula	298.58
Humphrey, Linwood & Shirley	383.86
Irving Tanning Company	123,693.83
James, Jefferson & Linda	323.40
Kaherl, Eugene	265.19
Killam, Willard	46.20
King, William & Evelyn	278.65

TOWN OF HARTLAND

Lancaster, Albert	\$ 6.60
Lathrop, Roger & Althea	277.33
Lawler, Lawrence	174.24
, Frank & Donna	241.30
Leavitt, Harry Jr. & Louise	292.38
Love, Charles & Mary Jo	39.60
Lyons, Maxine	300.56
Malone, Richard & Anna	517.58
Martin, Judy	180.32
, Seldon	371.05
Mead, George & Merlene	200.64
Merrill, Gary	66.00
Meyer, David & Page, Donna	47.26
Mills, Clara	150.94
Mitchell, Marie	170.68
Mooers, Rose Marie	208.16
Morgan, James	162.75
, James C.	192.85
Morse, Nancy	298.58
Mower, James & Gladys	159.06
Munn, Onal	398.65
MacInnis, Craig & Lynn	264.26
McDougal, Ryan & Dianna	159.77
McGraw, Sharon	176.35
McGuire, Lelsa	66.00
Nadeau, Betty	94.38
Norton, Lawrence	83.29
Nutter, Walter & Hilda	265.32
Oram, Marion	65.47
Page, Muriel	104.94
Palmer, Earl	158.53
Parsson, Alfred & Avis	214.37
Parker, Ricky	219.12
, Ricky & Coradean	76.69
Peavey, Robert	297.00
Pelkie, Charles & Christine	265.32
Perkins, Alan & Diane	217.80
, Dana & Dorothy	193.78
, Linwood	235.22
Flourde, Napoleon & Lilla	210.14

TOWN OF HARTLAND

Ramsdell, Arnold & Linda	\$ 109.56
Rice, Pauline	56.76
Rich, Robert & Janase	158.80
Richardson, Alden	75.24
Robinson, Gerald	279.44
, Lottie	152.33
Russell, Harry	118.67
Schafron, Aaron & Jeanette	230.47
Shakespeare, Stanley	184.54 •
Shaw, Lucille Shirley	309.67
, Steven & Brenda	297.00
, Wealthy	61.64
Sherburne, Robert	215.82
, Robert & Marie	19.80
Shibles, Lawrence & Donna	183.74
Sides, Howard	158.40
, Howard & Alice	219.12
Smart, Elwin & Bonnie	330.00
Smith, Eric	26.40
Snow, Linda	62.30
Stedman, David & Athene	86.46
Summerhill, Lester & Deborah	307.43
Taylor, Adam & Carol	400.89
Thompson, Floyd	460.94 •
Tompkins, Marjorie	99.79
Trapp, Earl	79.20
Trudeau, Randall & Donna	186.65
Turcotte, Michael & Gail	317.46
Vanadestine, Terry & Kathy	288.29
, Vernard & Faye	323.40
Wyman, Gloria	117.61
Withee, Paul	177.93
, Walter	20.72
Woodman, Clifton	114.84
Whittemore, Victor	200.77
Wilbur, James & Joyce	66.53
Wing, Casmir & Arlene	107.32
Withee, Carl	101.24
Watson, Ronald	24.55
Wentworth, Wallace	97.81

TOWN OF HARTLAND

White, Merlon & Sandra	\$ 134.77
Austin, Malcolm	239.71
Batchelder, Mary	104.94
Blanchard, John & Edith	204.07
Bryant, Thomas & Janet	114.71
Clukey, Zane	79.20
Cookman, Nelson	176.35
Cookson, Norman & Gladys	160.91•
Cool, Delbert	198.00•
, Delbert & Arla	60.72•
, Delbert & Ronald Johnston	26.40•
Cooper, William	89.76
Corry, Cornelius	141.64
Cranston, William & Patricia Ann	41.58•
Darby, Clarence & Frank	43.56
Davis, Ronald & Diana	257.66
Demo, Norman & Geraldine	33.66
Dubey, Barbara	71.28
Hallett, Richard & Shirley	142.43•
Frace, Elmer & Lillian	45.80
Frezetti, Elizabeth	208.03•
Furbush, Clarence & Herbert	248.29
Gaffett, Lewis & Sandra	609.84
Getchell, Freeman & Mary	150.48
Giroux, Katherine	19.80
Gray, Myron & Genevieve	112.99
Grenier, William	121.71
Hanson, Barry	162.63
Hoffman, John & Margaret	278.65•
, Paul	13.20
, Paul Jr.	121.18
Hooper, Clark & Martha	19.80
Kern, Eric & Anna	284.46
Lancaster, C.O.	565.09
Lancy, Anthony	58.48•
, Anthony & June	138.20•
Long, D. R. Enterprises	96.36
Lovely, Gregory	278.39•

TOWN OF HARTLAND

Lovely, Marvin	\$ 13.20
Lovingdale, Carl & Dorothy	182.16
Lyons, Myrna	6.60
Maloon, Theodore & Mary	59.40
Milani, Donald	69.30
McFarland, Norma	154.97
Nelson, Harry	26.40
O'Brien, Edward & Susan Breakell	16.10
Oliver, Richard	148.76
Ouelette, Arthur	49.50
Peavey, Paul	140.58
Philips, Peter	104.28
Pope, Billy & Nancy	96.76
Pray, Paul	50.16
Prouty, Elwood	210.41
Robbins, Bruce	30.36
Robinson, Ernest	96.10
Rummery, Bertha	19.80
Saccoccia, Pauline	19.80
Savage, Madison	13.20
Scott, James	7.00
Smith, Dana heirs of	39.16
Somes, Elnora Williams	93.72
Stedman, Robert	13.20
Stevens, Roger & Phyllis	153.38
Strachen, Donald	127.90
Vanadestine, Carl & Dorothy	139.66
Veilleux, Juliette	172.65
Welch, Edward	147.31
Hanson, Gary	7.26

SCHEDULE 21

TOWN OF HARTLAND

GENERAL FUND

DETAIL OF PRIOR YEAR'S TAXES RECEIVABLE

DECEMBER 31, 1980

	<u>Total</u>	<u>1979</u>	<u>1978</u>	<u>1977</u>
Brown, Robert	\$ 46.74			\$ 46.74
Elliott, Lewis	72.00			72.00
Elm Food Corp.	99.00	\$ 99.00		
Emery, Steven	224.93	224.93		
Grenier, Beverly	99.76			99.76
Harding, Carol	2.26		\$ 2.26	
Hughes, Bernice	26.87			26.87
Mower, Clyde	57.07		2.75	54.32
Nelson, Harry	185.91		185.91	
Parker, Ricky & Coradean	48.70		48.70	
Withee, Judith Ann	33.90		33.90	
TOTAL	<u>\$897.14</u>	<u>\$323.93</u>	<u>\$ 273.52</u>	<u>\$299.69</u>

SCHEDULE 22

TOWN OF HARTLAND
GENERAL FUND
DETAIL OF TAX LIENS
DECEMBER 31, 1980

	<u>1979</u>	<u>1978</u>
Austin, Floyd	\$ 126.32	
Bates, Gary & Deborah	301.22	
Braley, Thomas	225.19	\$ 142.78
Brooks, Foster & Jacqueline	258.85	
Brown, Richard		23.60
, Robert	57.16	25.33
Carlow, Glen Sr.	37.62	
Chamberlain, Ruth heirs	160.77	
Clement, Byron	118.80	
Clowry, Floyd	143.22	
Curtis, Norman Sr.	392.18	
Cyr, Thomas & Paula	333.96	
Davis, Herbert	147.31	
Dunn, James	99.00	84.75
Dubey, Roland & Janie	203.41	
Elm Hoop Corp.		84.75
Frace, Elmer Jr. & Lillian	45.80	39.21
Getchell, Freman & Mary	150.48	
Glidden, Joseph & Gladys	246.05	
Godsoe, Earl	118.80	101.70
Gould, Keith & Shirley	196.28	
Greenwood, Kenneth & Rita	153.38	
Grenier, Beverly	121.70	
Hanson, Barry	188.37	161.25
Hayden, Durwood & Marjorie	218.46	
Holmes, Harold & Annie	101.77	
Hopkins, Paul	146.52	
Harris, Jeffrey Paul		42.94
Hicks, Arthur		16.95
James, Jefferson, & Linda	323.40	
Killam, Lawrence	46.20	
King, William & Evelyn	278.65	
Leavitt, Harry & Louise	292.38	
Lindsay, Wayne	52.80	
Long, D. R. Enterprises	96.36	82.49
Morse, Nancy	298.59	
Munn, Onal	179.52	
McGraw, Kenneth & Sharon	176.35	
, Sharon Swain	99.00	
Oram, Marion	65.47	

SCHEDULE 22
Cont'd

TOWN OF HARTLAND

	<u>1979</u>	<u>1978</u>
Ouelette, Arthur	\$ 49.50	
Paresson, Alfred & Avis	164.37	
Palmer, Earl	53.34	
Peavey, Robert	197.00	
Ramsdell, Arnold & Linda	109.56	
Randall, Robert & Winifred	134.38	
Richardson, Alden	75.24	\$ 64.41
Rummery, Bertha	19.80	
Russell, Barry	118.67	
Shaw, Blynn		265.10
, Shirley	309.67	
Sherburne, Robert & Marie	19.80	
, Robert	215.82	
Small, Wilfred & Shirley	114.71	
Smith, Dana heirs	89.16	
Snow, Linda	62.30	
Summerhill, Lester & Deborah	307.43	
Taylor, Adam & Carol	400.89	175.04
Tompkins, Marjorie	99.79	
Vanadestine, Terry & Kathy	288.29	
White, Merlon & Sandra	134.77	
Whittemore, Victor E.		171.87
Woodman, Clifton	101.64	
TOTAL	<u>\$9,267.47</u>	<u>\$1,482.17</u>

Town Warrant

STATE OF MAINE

COUNTY OF SOMERSET

To Peggy A. Morgan, a Constable in the Town of Hartland, County of Somerset.

Greetings:

In the name of the State of Maine, you are hereby required to notify and warn the Inhabitants of the Town of Hartland in said County, qualified by law to vote in town affairs, to meet and assemble at the Hartland Town Hall in said town, Saturday, the seventh day of March, 1981 A.D. at 10:00 a.m. in the morning then and there to act on the following articles:

Art. 1. To choose a moderator to preside at said meeting.

Art. 2. To see if the Town will vote to elect one or more commissioners for the ensuing year.

Art. 3. To see if the Town will vote to instruct the Selectmen to appoint a road commissioner for the ensuing year.

Art. 4. To see if the Town will vote to pay the State rate for laborers, foremen, and trucks on any town truck, \$1,600.00 for Town Clerk, \$100.00 for Registra of Voters, \$500.00 for Fire Chief and \$1,500.00 for the combined officers of Selectmen, Assessors and Overseers of the Poor.

Art. 5. To see when the Town will vote to have their taxes committed, when they will make them payable, what rates of interest will be charged, and from what dates or anything related thereto, June 1 Real Estate, October 1 interest if unpaid December 1 at 20 percent.

Art. 6. To see if the Town will authorize the tax collector to allow a discount for early payment of taxes and if so, at what rate.

Art. 7. To see what sum of money the Town will vote to raise and appropriate for salaries of town officers.

Budget Committee Recommends: \$30,000.00.

Art. 8. To see what sum of money the Town will vote to raise and appropriate for Contingent account.

Budget Committee Recommends: \$6,500.00.

Art. 9. To see if the Town will vote to use \$15,000.00 from Surplus for the maintenance of the Town Dump.

Budget Committee Recommends: Yes

Art. 10. To see if the Town will vote to raise and appropriate \$3,100.00 for O.A.B. (Social Security).

Budget Committee Recommends: Yes

Art. 11. To see what sum of money the Town will vote to raise and appropriate for Workman's Compensation Insurance.

Budget Committee Recommends: \$3,300.00.

Art. 12. To see if the Town will vote to carry the balance of \$200.00 for Civil Preparedness for the ensuing year.

Budget Committee Recommends: Yes

Art. 13. To see what sum of money the Town will vote to raise and appropriate for Blue Cross and Blue Shield for the ensuing year.

Budget Committee Recommends: \$2,300.00.

Art. 14. To see what sum of money the Town will vote to raise and appropriate for Insurances for the ensuing year.

Budget Committee Recommends: \$2,500.00.

Art. 15. To see what sum of money the Town will vote to raise and appropriate for Truck Expense for the ensuing year.

Budget Committee Recommends: \$3,500.00.

Art. 16. To see what sum of money the Town will vote to raise and appropriate for Street Lights for the ensuing year.

Budget Committee Recommends: \$9,000.00.

Art. 17. To see what sum of money the Town will vote to raise and appropriate for Christmas Lights.

Budget Committee Recommends: \$500.00.

Art. 18. To see what sum of money the Town will vote to raise and appropriate for the maintenance of the Town Hall.

Budget Committee Recommends: \$6,000.00.

Art. 19. To see if the Town will vote to employ two Special Officers, under the jurisdiction of the Selectmen to perform such work as they may direct and to raise and appropriate a sum of \$3,000.00 for compensation of such officers.

Budget Committee Recommends: Yes

Art. 20. To see what sum of money the Town will vote to take from surplus, for services of Red Network Fire Alarm, to be paid to Hartland Fire Department.

Budget Committee Recommends: \$100.00 from surplus.

Art. 21. To see if the Town will vote to raise and sum of \$906.00 to be paid to North Kennebec Regional Planning Commission.

Budget Committee Recommends: Yes

Art. 22. To see what sum of money the Town will vote to raise and appropriate for Sewer Maintenance.

Budget Committee Recommends: \$3,000.00.

Art. 23. To see what sum of money the Town will vote to raise and appropriate for Pollution Abatement.

Budget Committee Recommends: \$5,497.00.

Art. 24. To see what sum of money the Town will vote to raise and appropriate for Winter Roads and Sidewalks.

**Budget Committee Recommends:
\$25,000.00 from excise, raise \$13,000.00.**

Art. 25. To see what sum of money the Town will vote to raise and appropriate for Village Streets.

Budget Committee Recommends: \$4,000.00.

Art. 26. To see if the Town will vote to raise and appropriate the sum of \$10,392.00 for 6 Units of State Aid Construction, in addition to the amount raised for the care of ways, bridges, and highways under the provisions of Title 23, MRSA Section 1001, 1103, or 1104.

**Budget Committee Recommends:
Raise \$10,392.00; carry \$17,592.00.**

Art. 27. To see what sum of money the Town will vote to raise and appropriate for Sidewalk Repairs.

Budget Committee Recommends: \$3,000.00.

Art. 28. To see what sum of money the Town will vote to raise and appropriate for compensation of Traffic Guides under jurisdiction of the Selectmen.

Budget Committee Recommends: \$1,100.00.

Art. 29. To see what sum of money the Town will vote to raise and appropriate for the care and improvements of Cemeteries.

Budget Committee Recommends: \$2,000.00.

Art. 30. To see what sum of money the Town will vote to raise and appropriate for the payment of interest on debt and tax notes in addition to any interest collected on taxes and tax liens.

Budget Committee Recommends: \$1,000.00.

Art. 31. To see what sum of money the Town will vote to raise and appropriate for General Assistance.

Budget Committee Recommends: \$6,500.00.

Art. 32. To see what sum of money the Town will vote to raise and appropriate for Unemployment Tax.

Art. 33. To see what sum of money the Town will vote to raise and appropriate for Hydrant Rental.

Budget Committee Recommends: \$14,339.00.

Art. 34. To see if the Town will vote to take \$9,500.00 from Surplus for the support of the Fire Department.

Budget Committee Recommends: Yes

Art. 35. To see what sum of money the Town will vote to raise and appropriate for Tree Removal.

Budget Committee Recommends: \$600.00.

Art. 36. To see what sum of money the Town will vote to raise and appropriate for Hartland & St. Albans Emergency Unit.

Budget Committee Recommends: \$600.00.

Art. 37. To see if the Town will vote to take \$400.00 from Surplus for the Hartland and St. Albans Senior Citizens.

Budget Committee Recommends: Yes

Art. 38. To see if the Town will vote to raise and appropriate \$50.00 for the Senior Citizens Health Clinic.

Budget Committee Recommends: Yes

Art. 39. To see what sum of money the Town will vote to raise and appropriate for the Swimming Pool.

Budget Committee Recommends: \$4,000.00.

Art. 40. To see what sum of money the Town will vote to raise and appropriate for Hartland Library.

Budget Committee Recommends: \$3,800.00.

Art. 41. To see what sum of money the Town will vote to raise and appropriate for Insulation.

Budget Committee Recommends: \$4,500.00.

Art. 42. To see if the Town will authorize the Selectmen in behalf of the Town, to sell and dispose of any real estate acquired by the Town for non-payment of taxes, on such terms as they may deem advisable, and to execute quit-claim deeds for such property advertising such property to the public.

Art. 43. To see if the Town will direct the Selectmen to appoint a Tax Collector and Treasurer for the ensuing year and authorize them to affix a salary.

Art. 44. To see if the Town will vote to turn over the monies received from the State Treasurer on Snowmobile registration for 1981, to Smokey's Angels Snowmobile Club for maintenance of snowmobile trails for benefit and use of all public.

Art. 45. To see if the Town will vote to accept Nelson Lane as a town way, being laid out as follows:

Beginning at the Southerly corner of the lot lettered "McAllister" on said plan and thence Westerly along the southerly line of the McAllister lot and lot No. 3 to a wooden post set in the ground of the easterly line of lot no. 4, lot no. 5, a lot lettered "out" and fifteen feet (15') southerly along the easterly line of lot no. 6 from its Northerly corner to another wooden post set in the ground on the easterly line of lot no. 6; Thence across Nelson Lane in a straight line to the wooden post set in the ground marking the southwesterly corner of lot no. 2, thence following the westerly line of lot no. 2 a distance of (125') one hundred twenty-five feet, more or less; to the north westerly corner of lot no. 2; thence easterly along the northerly line of lot no. 2 and lot no. 1 to a point opposite the southeasterly corner of the McAllister lot; thence northerly along Nelson Lane to the point of beginning.

Art. 46. To see if the Town will vote to have a committee of twelve (12) citizens appointed to cooperate with the Selectmen in preparing a recommended budget for the next annual meeting. One being designated as chairman of this committee.

Art. 47. To see if the Town will vote to accept the following ordinance.

No livestock shall be kept on any premises in the following areas of Hartland: Pittsfield Avenue, Pleasant St., Moore St., Water St., North St., Commercial St., Academy St., Elm St., Main St., Hubbard Avenue, Hubbard Lane, Blake St., Seekins St., Crosby St.

Livestock shall be defined as any animal other than Cat or Dog.

Art. 48. To see if the Town will vote to accept the following ordinance.

Whoever detains any books, audio visual material, or other property of the Hartland Public Library for (7) seven days after written notice to return same, delivered by Certified Mail or in-hand by a police officer given after expiration of the time which by the rules of the Hartland Public Library such article or other property may be kept, shall be guilty of a Misdemeanor.

Art. 49. To see if the Town will vote to accept the following changes in the Shoreland Zoning Map on Great Moose Lake.

That portion beginning at a point on the West Shore of Great Moose Lake at the Northeast Corner of land of Walter Sawyer and continuing in a Northwesterly and Southerly direction to the Southwesterly corner of the former Wakefield property, is hereby changed from Residential Recreation to General Development with a setback required of 50 feet and by permission of the planning board from 30 to 50 feet.

**Appropriation of \$56,904.00 of Federal Revenue Sharing
Payments to the Town of Hartland.**

Art. 50. To see if the Town will vote to appropriate the sum of \$19,503.00 from Federal Revenue Sharing Account and transfer to General Administration Account for the Pollution Abatement Account.

Budget Committee Recommends: Yes

Art. 51. To see if the Town will vote to appropriate the sum of \$30,000.00 plus interest from Federal Revenue Sharing Account and transfer to General Administration Account for Roads and Bridges Account.

Budget Committee Recommends: Yes

Notes

Town of Hartland

Section 706, Title 36, M.R.S.A. of the Revised Statutes states that before making an assessment, the assessors shall give reasonable notice in writing to all persons liable to taxation in the municipality to furnish the assessors true and perfect lists of their polls and all their estates not by law exempt from taxation of which were possessed on the 1st day of April of the same year. This section has been amended to read: The notice to owners may be by mail directed to the last known address of the taxpayer or by any other method that provides reasonable notice to the taxpayer.

Section 5 says that if the assessors fail to give this notice as required, the taxpayer is not barred of his right to make application for abatement.

The taxpayer should make out this list in writing and send it to the assessors or bring it in to them on or before April 1 of this year.

Any taxpayer receiving a town report with the above printed in it or receives a copy of the above section by mail is considered to have had a proper notice.

The selectmen hereby notify all taxpayers that they will be in session on the 1st day of April at the Town Office from 9:00 a.m. to 12:00 a.m. to receive above mentioned lists.