

1918

Think Love Of Me

Frank H. Grey
Composer

Frank H. Grey
Lyricist

Follow this and additional works at: <https://digitalcommons.library.umaine.edu/mmb-vp>

Recommended Citation

Grey, Frank H. and Grey, Frank H., "Think Love Of Me" (1918). *Vocal Popular Sheet Music Collection*. Score 5553.
<https://digitalcommons.library.umaine.edu/mmb-vp/5553>

This Book is brought to you for free and open access by DigitalCommons@UMaine. It has been accepted for inclusion in Vocal Popular Sheet Music Collection by an authorized administrator of DigitalCommons@UMaine. For more information, please contact um.library.technical.services@maine.edu.

27

WMA'S
2-12-33



Think Love of Me

Song With Violin or Cello Obbligato

Words & Music by

FRANK H. GREY

Vp. 011918
1918
THINK

Bagaduce Music
Lending Library
Blue Hill, Maine
Donor: 271

Sam Fox Pub. Co.
Cleveland

HIGH
MEDIUM

Think Love Of Me

When the sun is setting low,

Think, Love, of me;

When the reapers homeward go,

Think, Love, of me;

When the deep'ning twilight falls,

Birds have gone to rest;

Then, Love, I feel thy head

Close to my breast.

When the day's hard task is o'er,

Think, Love, of me;

When the Angelus rings no more,

Think, Love, of me;

In the stillness of the night

When all nature sleeps;

Thou wilt know of one who waits,

Watches and weeps.

Frank H. Grey.

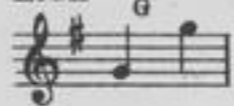


GET THIS SONG
FOR YOUR PLAYER PIANO
OR TALKING MACHINE

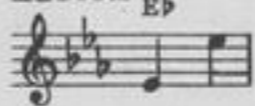
To my Wife

Think Love Of Me

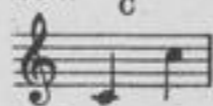
HIGH



MEDIUM



LOW



Words & Music by
FRANK H. GREY

Moderato

mf *dim. e rall.*

with infinite tenderness

p

When the sun is set - ting low, Think, Love, of me;

p

When the reap - ers home - ward go, Think, Love, of me;

Copyright MCMXVIII by Sam Fox Publishing Co., Cleveland, O.

International Copyright Secured.

Representatives for Europe and British Empire (excluding Canada) Bosworth & Co., London.

When the deep-'ning twi - light falls, Birds have gone to

dim.

dim.

rest; Then, Love, I feel thy head

f

f

Close to my breast.

dim. e rall.

dim. e rall.

a tempo

mf

rall.

Tempo I

p

When the day's hard task is o'er, Think, Love, of me;

Piano accompaniment for the first system, including treble and bass staves with chords and melodic lines.

When the An - ge - lus rings no more, Think, Love, of me;

Piano accompaniment for the second system, including treble and bass staves with chords and melodic lines.

In the still - ness of the night When all na - ture sleeps;

dim.

Piano accompaniment for the third system, including treble and bass staves with chords and melodic lines.

Thou wilt know of one who waits, Watch - es and weeps.

f

dim.

Piano accompaniment for the fourth system, including treble and bass staves with chords and melodic lines.

L.H.

pp



The Song Immortal

The Song Eternal

One Fleeting Hour

A Song That Will Live Forever

One Fleeting Hour

Words by **KARL FUHRMANN** Music by **DOROTHY LEE**

Moderato, molto espressivo

VOICE

PIANO

When the
 twilight of eve dims the sun's last ray
 And the shades of the night gather
 fast,
 There is one fleeting hour that I've pray'd would stay,
 Full of
 joy and of pain that's passed,
 And per-haps you may know of its

The Song that made Dorothy Lee

DOROTHY LEE, who is so dearly loved, and whose songs are sung "wherever people sing," first became known to music lovers through her great success "One Fleeting Hour."

A beautiful, melodious song, there is about it a wealth of human understanding which has made a wonderful irresistible appeal. The song eternal, it seems destined to live forever, for it is being sung more today than ever before. The countless thousands who love this quiet little woman of the West and her inspired music, love all of her songs, but none more than her immortal "One Fleeting Hour."

Published in Five Keys with Violin or Cello Obligato

List Price Sixty Cents
Less Usual Discount

PUBLISHED BY **SAM FOX PUB. CO.** CLEVELAND, O.
 European Representatives—**BOSWORTH & CO., London**
 EXCLUSIVE PUBLISHERS OF **DOROTHY LEE COMPOSITIONS**