

The University of Maine

DigitalCommons@UMaine

---

Vocal Popular Sheet Music Collection

Public domain (may be downloaded in full)

---

1922

## Love Will Find Your Heart : Ballad

Joe Francis McMahon

*Composer*

Joe Francis McMahon

*Lyricist*

Follow this and additional works at: <https://digitalcommons.library.umaine.edu/mmb-vp>

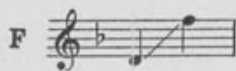
---

### Recommended Citation

McMahon, Joe Francis and McMahon, Joe Francis, "Love Will Find Your Heart : Ballad" (1922). *Vocal Popular Sheet Music Collection*. Score 5048.

<https://digitalcommons.library.umaine.edu/mmb-vp/5048>

This Book is brought to you for free and open access by DigitalCommons@UMaine. It has been accepted for inclusion in Vocal Popular Sheet Music Collection by an authorized administrator of DigitalCommons@UMaine. For more information, please contact [um.library.technical.services@maine.edu](mailto:um.library.technical.services@maine.edu).



# LOVE WILL FIND YOUR HEART

**BALLAD**

ORIGINALLY IN SUNNY KANSAS COPYRIGHT 1918

WORDS AND MUSIC  
BY

**JOE FRANCIS M<sup>c</sup> MAHON**

60¢

**OTHER COMPOSITIONS**

OUR SKIPPER MARCH  
LA LUCHA WALTZ  
MISS MILWAUKEE

OMAR KHAYYAM FOX TROT  
SUNFLOWER POLKA  
AIR VARIE (TEXAS)

PUBLISHED BY  
**J. F. M<sup>c</sup> MAHON**  
153 East 86<sup>th</sup> Str.  
NEW YORK

MADE IN U.S.A.

Vp. 019112  
1908  
LOVE

# Love Will Find Your Heart

BALLAD

J. F. Mc MAHON

Moderato

The piano introduction is in 3/4 time, marked Moderato. It begins with a treble clef and a key signature of one flat (B-flat). The right hand plays a series of chords and eighth notes, while the left hand provides a steady bass line. A dynamic marking of *f* (forte) is present. The piece concludes with a *rit.* (ritardando) marking and a final chord.

VOICE

The vocal line is in 3/4 time, marked Moderato. The lyrics are: "Your love will find you some time Sure - ly he'll find your When Cu - pid hunts a tar - get Man is an ea - sy". The piano accompaniment is in 3/4 time, marked *p* (piano). It features a steady bass line and chords that support the vocal melody.

The vocal line continues with the lyrics: "heart, Ah; sweet is the love of spring - time prey And none can es - cape his ar - rows". The piano accompaniment continues with a steady bass line and chords that support the vocal melody.

Deep down in all our hearts  
Na - ture will do her part

Ah Love is di - vine let us  
love is di - vine do not

treas - ure Love is in ev - 'ry heart.  
se - ver Man from his own true heart.

CHORUS (*A little quicker*)

Love will find his way in - to ev - - 'ry

heart, Age nor time nor state o' wind can

*rit.* *a tempo*

This system contains the first two staves of music. The vocal line is on a treble clef staff with a key signature of one flat and a common time signature. The lyrics are "heart, Age nor time nor state o' wind can". The piano accompaniment is on a grand staff (treble and bass clefs). The first measure of the piano part is marked *rit.* and the second measure is marked *a tempo*.

'scape his mark Love will find his

*rit.* *a tempo*

This system contains the next two staves of music. The vocal line continues with the lyrics "'scape his mark Love will find his". The piano accompaniment continues with the *rit.* and *a tempo* markings.

way in - to ev - - 'ry heart

This system contains the next two staves of music. The vocal line continues with the lyrics "way in - to ev - - 'ry heart". The piano accompaniment continues.

God made the world then put love in - to our hearts.

This system contains the final two staves of music on the page. The vocal line concludes with the lyrics "God made the world then put love in - to our hearts." The piano accompaniment concludes with a final chord.