

1917

When Down In Macon, Geogria : I'll Be Makin' Georgia Mine

Paul Biese

Composer

F. Henri Klickmann

Composer

Frost

Lyricist

Loos Brothers

Lyricist

Follow this and additional works at: <https://digitalcommons.library.umaine.edu/mmb-vp>

Recommended Citation

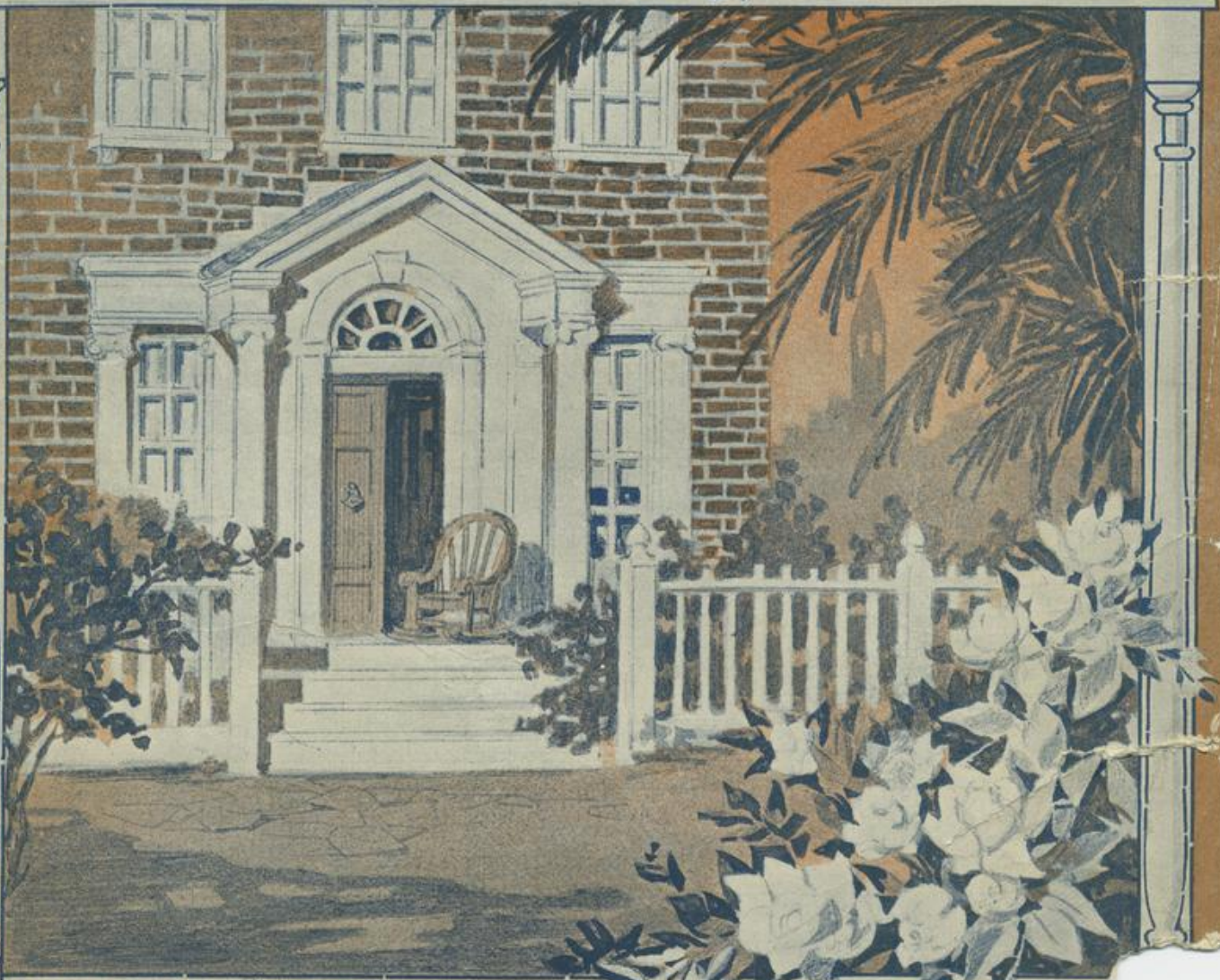
Biese, Paul; Klickmann, F. Henri; Frost; and Loos Brothers, "When Down In Macon, Geogria : I'll Be Makin' Georgia Mine" (1917).
Vocal Popular Sheet Music Collection. Score 4971.

<https://digitalcommons.library.umaine.edu/mmb-vp/4971>

This Book is brought to you for free and open access by DigitalCommons@UMaine. It has been accepted for inclusion in Vocal Popular Sheet Music Collection by an authorized administrator of DigitalCommons@UMaine. For more information, please contact um.library.technical.services@maine.edu.

WAY · DOWN · IN MACON · GEORGIA

I'll be makin' Georgia mine.



LYRIC BY THE
LOOS · BROTHERS
and
JACK · FROST.

Frank K. Root & Co.
McKINLEY MUSIC CO. OWNERS
CHICAGO NEW YORK

MUSIC BY
PAUL BIESE ·
F · HENRI · KLICK

Vp. 018654
1917
WAY

Lyric by
THE LOOS BROS.
and
JACK FROST.

WAY DOWN IN MACON, GEORGIA, I'll Be Makin' Georgia Mine.

Music by
PAUL BIESE
and
F. HENRI KLICKMANN.

Moderato.

Piano introduction in G major, 2/4 time. The piece begins with a *Moderato* tempo. The first system features a treble clef with a melody of eighth notes and a bass clef with a steady accompaniment. The second system continues the melody and accompaniment. The third system includes a dynamic marking of *f* and a fermata over a chord. The fourth system is marked *VAMP* and *mp*, featuring a more active melody in the treble and a simpler accompaniment in the bass.

I know a girl 'way down in Ma-con, Geor-gia, Down in that lit - tle town of Ma-con, Georgia,
Mind your ge - og - ra - phy, you'll find it teach-es That state is fa-mous for its Georgia peach-es,

Piano accompaniment for the first line of lyrics. The treble clef part features a melody of eighth notes, and the bass clef part provides a steady accompaniment. A dynamic marking of *mf* is present at the beginning.

I know she's wait - ing 'neath that south - ern moon, I'm al - most cer - tain I'll be with her soon;
And soon I'll reach the sweet - est peach I've seen, Then I'll be - seech the lit - tle peach I mean

Piano accompaniment for the second line of lyrics. The treble clef part features a melody of eighth notes, and the bass clef part provides a steady accompaniment.

I had to prom - ise her that I'd come back in - sweet Mag - no - lia time, —
To come a - long the road that leads to sun - shine — and that preach - er man, —

Piano accompaniment for the third line of lyrics. The treble clef part features a melody of eighth notes, and the bass clef part provides a steady accompaniment.

I want her on - ly, my heart is lone - ly, Sings this lit - tle rhyme. —
And not be jeal - ous of an - y fel - lows Down in Geor - ge - ia land. —

Piano accompaniment for the fourth line of lyrics. The treble clef part features a melody of eighth notes, and the bass clef part provides a steady accompaniment.

CHORUS

I'm on my way to Macon, Georgia, Where skies are al-ways blue, — 'Cause there's a girl in Macon, Georgia, Her name is Georgia,

too, — And you can say what you may, by the way it's fun-ny, Her name's the same as that state so sun-ny, Fields of cot-ton,

They seem to know I'm not for-got-ten. In that town of Macon, I know she'll un-der-stand, — And so this train, once a-gain, I am

tak-in' To the sweetest peach in Georgia land, And when it's snowtime in that north-ern c'ime, Just pic-ture me beneath that

bright sun-shine, 'Way down in Macon, Georgia, I'll be mak-in' Georgia mine — I'm on my mine.

Late Popular Successes



Waltz Ballad

IF YOU'VE NEVER BEEN IN DREAMLAND YOU'VE NEVER BEEN IN LOVE WALTZ BALLAD

Music by **MAX REBER**
Lyrics by **WILL CALLAHAN**

Copyright © 1927 by Frank M. Ross & Co.
Renew Copyright Secured

Down the Sunset Trail to AVALON
I'll Travel On To You!

Lyrics by **JACK FROST**
Music by **E. CLINTON KRISTLEY**

Copyright © 1927 by Frank M. Ross & Co.
Renew Copyright Secured



Popular Song Success

THE HOUR OF MEMORY
(Remembrance Song)

English Lyrics by **WILL CALLAHAN**
Music by **A. D'ARNA**
Adapted by Henry S. Stewart

Copyright © 1927 by Frank M. Ross & Co.
Renew Copyright Secured

SWEET COOKIE MINE

Lyrics by **JACK FROST**
Music by **CLARENCE J. JONES**

Copyright © 1927 by Frank M. Ross & Co.
Renew Copyright Secured

PARADISE BLUES
Oh! Pretty Papa! Oh! Pretty Papa!

Words by **WALTER HIRSCH**
Music by **SPENCER WILLIAMS**

Copyright © 1927 by Frank M. Ross & Co.
Renew Copyright Secured

I AIN'T GOT NOBODY
(And Nobody Cares for Me)

Lyrics by **JACK FROST**
Music by **FRANK M. ROSS**

Copyright © 1927 by Frank M. Ross & Co.
Renew Copyright Secured

LET'S GO BACK TO DREAMY LOTUS LAND

Lyrics by **JACK FROST**
Music by **PAUL HIRSH and BENNY KLICKMANN**

Copyright © 1927 by Frank M. Ross & Co.
Renew Copyright Secured

I LOVE THAT LOVABLE MELODY

Lyrics by **JACK FROST**
Music by **FRANK M. ROSS**

Copyright © 1927 by Frank M. Ross & Co.
Renew Copyright Secured



The Great Original Blue Waltz

MOONLIGHT BLUES
WALTZ

Music by **OWEN DRANE**

Copyright © 1927 by Frank M. Ross & Co.
Renew Copyright Secured

MY FOX-TROT GIRL
Song of Fox-Trot

Lyrics by **MAX REBER**
Music by **PAUL HIRSH and BENNY KLICKMANN**

Copyright © 1927 by Frank M. Ross & Co.
Renew Copyright Secured



Greatest Song Hit of the Season

Complete Copies on Sale Wherever Music is Sold!

McKinley Music Company

CHICAGO
NEW YORK