

The University of Maine

DigitalCommons@UMaine

Vocal Popular Sheet Music Collection

Public domain (may be downloaded in full)

1917

So Long Rhode Island

Joe Cronson

Composer

Charles Ruddy

Composer

Follow this and additional works at: <https://digitalcommons.library.umaine.edu/mmb-vp>

Recommended Citation

Cronson, Joe and Ruddy, Charles, "So Long Rhode Island" (1917). *Vocal Popular Sheet Music Collection*. Score 4553.

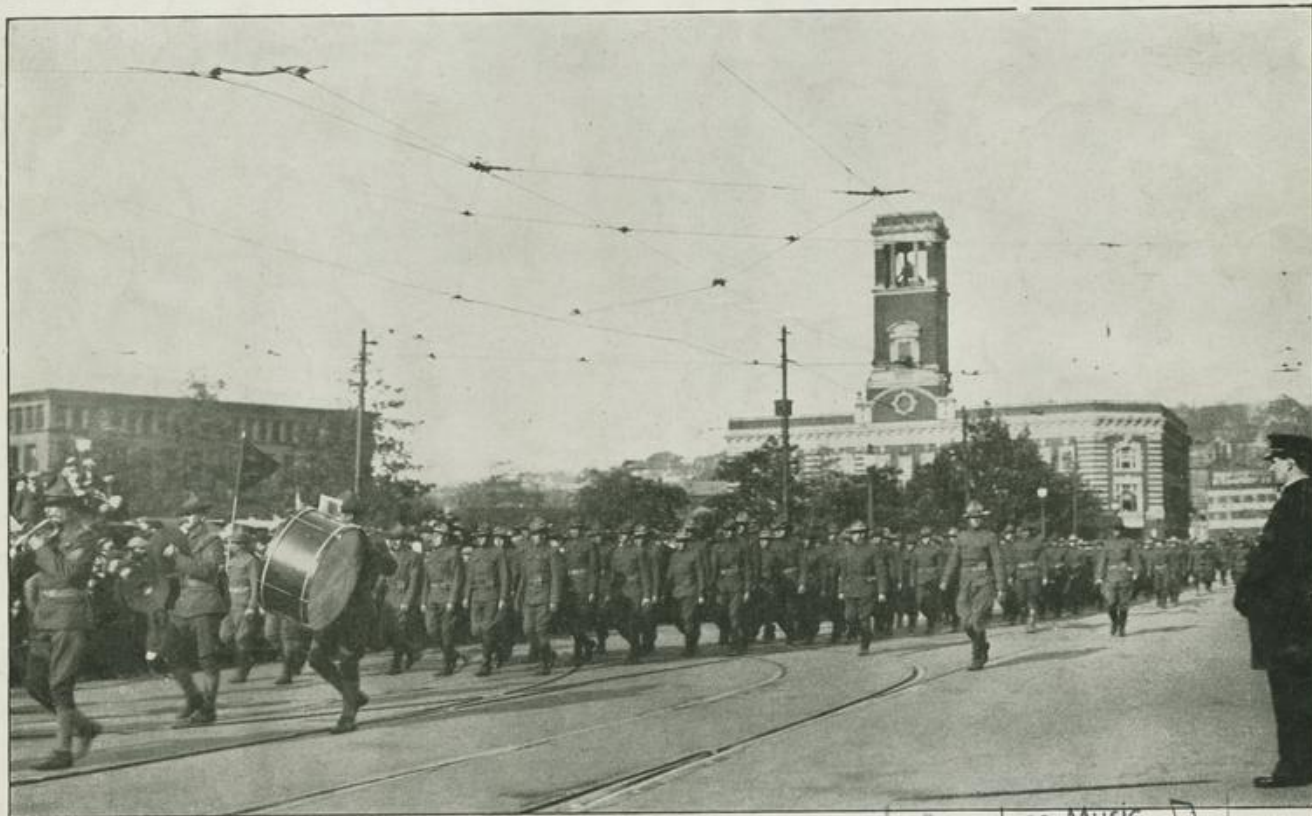
<https://digitalcommons.library.umaine.edu/mmb-vp/4553>

This Book is brought to you for free and open access by DigitalCommons@UMaine. It has been accepted for inclusion in Vocal Popular Sheet Music Collection by an authorized administrator of DigitalCommons@UMaine. For more information, please contact um.library.technical.services@maine.edu.

SO LONG RHODE ISLAND

BY

Joe Cronson AND Charles Ruddy



Bagaduce Music

Lending Library

Blue Hill, Maine

Donor: 978

PUBLISHED BY
Eastern Music Co.
CAESAR MISCH. BLDG.
PROVIDENCE, R. I.

VP-015982

1917

SOL

SO LONG RHODE ISLAND

By JOE CRONSON
and CHARLES RUDDY

Marcia

PIANO

The piano introduction is in 2/4 time with a key signature of one sharp (F#). It features a rhythmic melody in the right hand and a supporting bass line in the left hand. The melody consists of eighth and quarter notes, with some chords. The bass line is primarily quarter notes and eighth notes. The piece ends with a final chord.

(Not too fast)

The first system of the song features a vocal line and piano accompaniment. The vocal line is in a soprano range, starting on a middle C. The piano accompaniment is in the same key and time signature. The lyrics are: "The reg-i-ments are read-y ev-'ry one, Wait-ing for the day to For Lib-er-ty is call-ing to the fray: Most ev-'ry moth-er's son a -". The piano accompaniment includes chords and a rhythmic pattern.

The second system continues the vocal and piano accompaniment. The lyrics are: "sail. Rhode Is - land's loy - al sons, Are going to show the Huns, Old way; We'll fight with all our might, We've got to win the fight, For". The piano accompaniment continues with chords and a rhythmic pattern.

The third system continues the vocal and piano accompaniment. The lyrics are: "Glo - ry was nev - er known to fail. And when they sail a - our boys are going to show the way. We'll miss you all the". The piano accompaniment continues with chords and a rhythmic pattern.

The fourth system concludes the vocal and piano accompaniment. The lyrics are: "way, You'll hear them soft - ly say: while; Now friends cheer up and smile:". The piano accompaniment continues with chords and a rhythmic pattern.

CHORUS

So long Rhode Is - land, So long folks at home, Good - bye dear old

p-f

Pals; ————— We're go - ing ov - er to fight the foe, And to face the

shot and shell ————— Now don't be griev-ing 'cause we're leav - ing ————— For the

bat - tle ov - er there, ————— Old Glo - ry'll tell the sto - ry when we march in - to Ber -

lin, Then you'll know we've done our share. ————— share. —————

1. ————— 2. —————

Respectfully Dedicated to Miss Rose Mary King

ROSE MARY

By BERNARD E. FAY

CHORUS
Slowly

Rose, Rose don't you hear my love a - call - ing For you I'm

pin - ing my heart is ach - ing, for you it's break - ing

Sweet - er than the su - gar cane a - grow - ing, You are the

fair - est of flowers Rose Ma - ry. ry.

Copyright 1915 by Eastern Music Co.
Caesar Misch. Bldg. Providence R.I.
International Copyright Secured
European Representatives, B. Feldman & Co. London, Eng.

COMPLETE COPIES AT ALL MUSIC STORES