

The University of Maine

DigitalCommons@UMaine

Vocal Popular Sheet Music Collection

Public domain (may be downloaded in full)

1898

Lucy! Tell Me I'm Your Beau.

Safford Waters

Composer

Follow this and additional works at: <https://digitalcommons.library.umaine.edu/mmb-vp>

Recommended Citation

Waters, Safford, "Lucy! Tell Me I'm Your Beau." (1898). *Vocal Popular Sheet Music Collection*. Score 4311. <https://digitalcommons.library.umaine.edu/mmb-vp/4311>

This Book is brought to you for free and open access by DigitalCommons@UMaine. It has been accepted for inclusion in Vocal Popular Sheet Music Collection by an authorized administrator of DigitalCommons@UMaine. For more information, please contact um.library.technical.services@maine.edu.

Lucy! Tell Me I'm Your Beau

As sung by Otis
Harlan in *Flights*
A Night & A Day at
the Garrick Theatre

by Safford Waters



PHOTO BY
ROCKWOOD

Musical Supplement
of the NEW YORK JOURNAL
AND ADVERTISER
Sept. 16, 1898.

Vp. 014337
1898
Luc

Bagaduce Music
Lending Library
Blue Hill, Maine
979
Donor

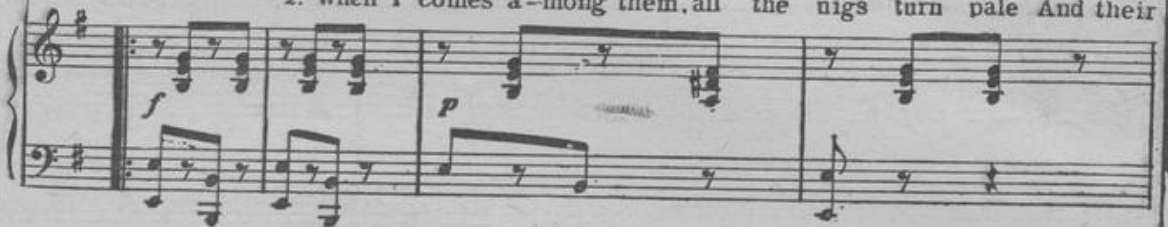
LUCY! TELL ME I'M YOUR BEAU.

By Safford Waters.

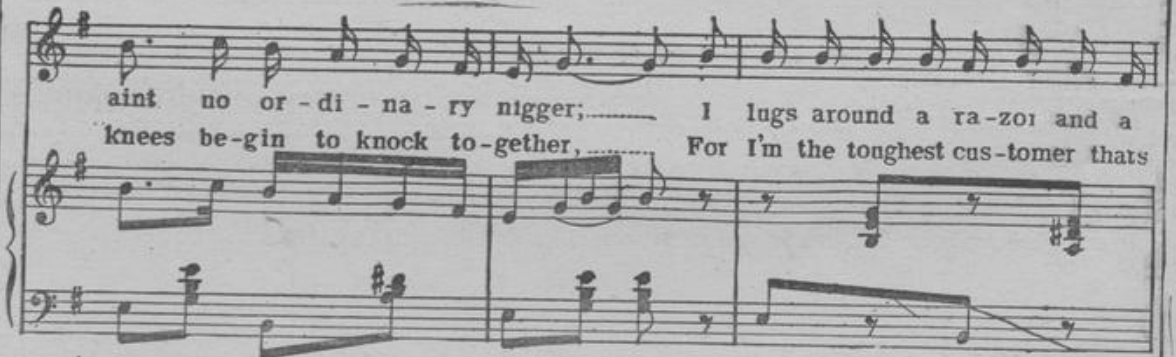
moderato.



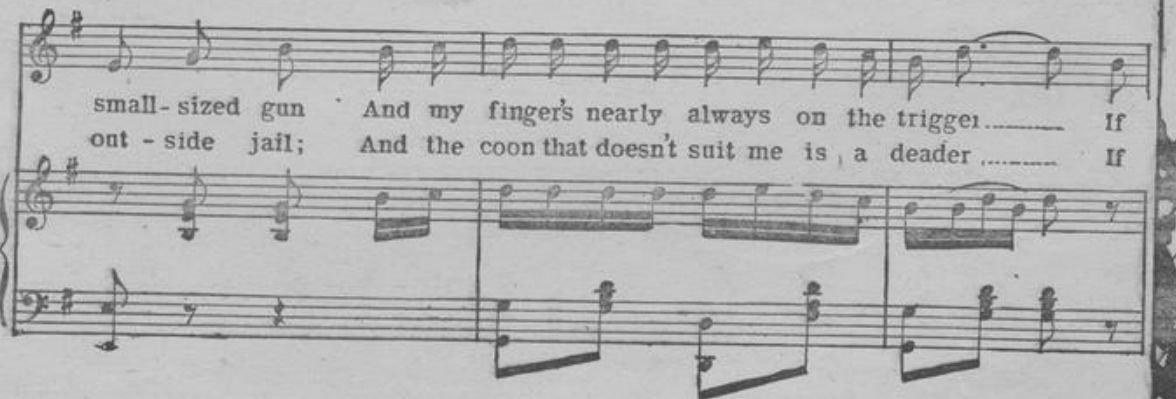
1. I'm the big black diamond of the four-teenth ward, And I
2. When I comes a-mong them, all the nigs turn pale And their

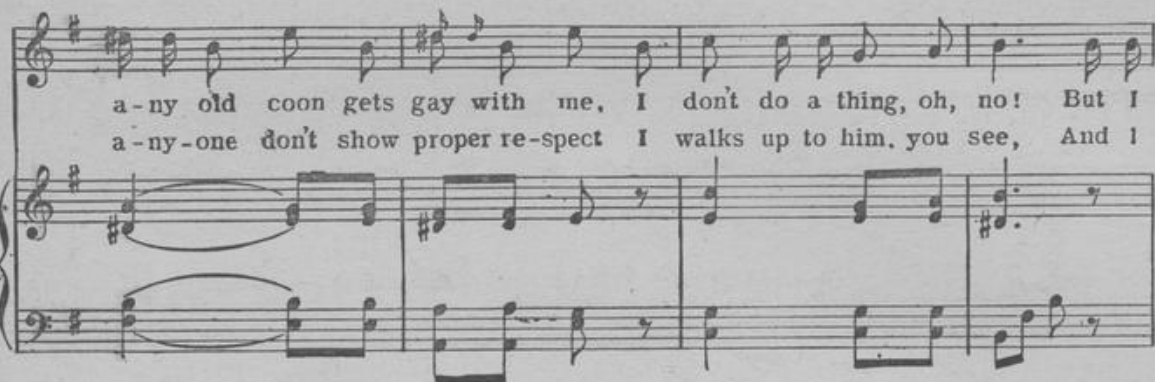


aint no or-di-na-ry nigger; I lugs around a ra-zor and a
knees be-gin to knock to-gether, For I'm the toughest cus-tomer thats

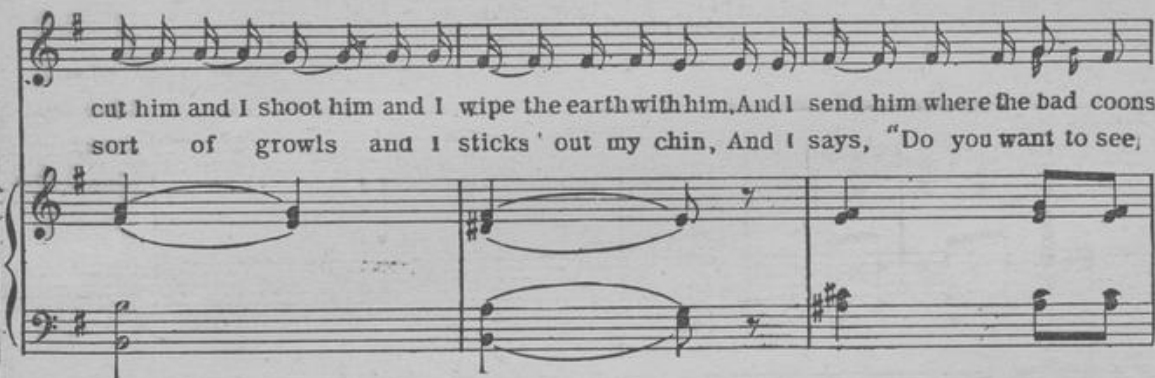


small-sized gun And my finger's nearly always on the trigger..... If
out-side jail; And the coon that doesn't suit me is a deader..... If



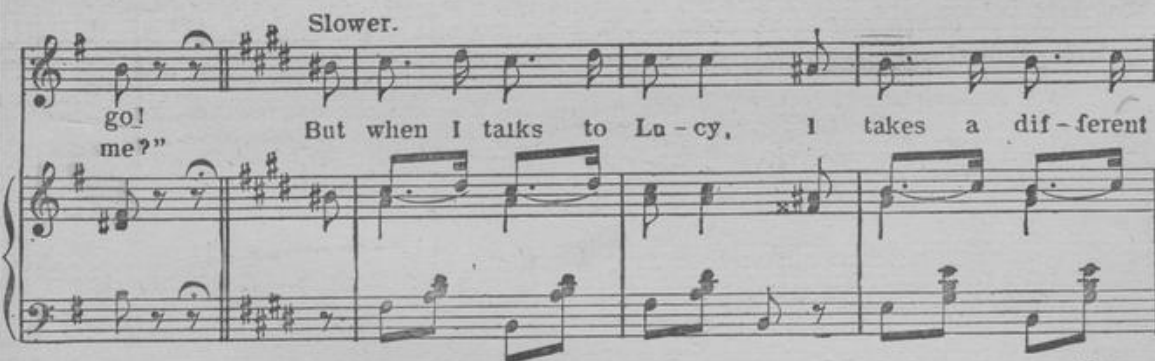


a-ny old coon gets gay with me, I don't do a thing, oh, no! But I
a-ny-one don't show proper re-spect I walks up to him, you see, And I

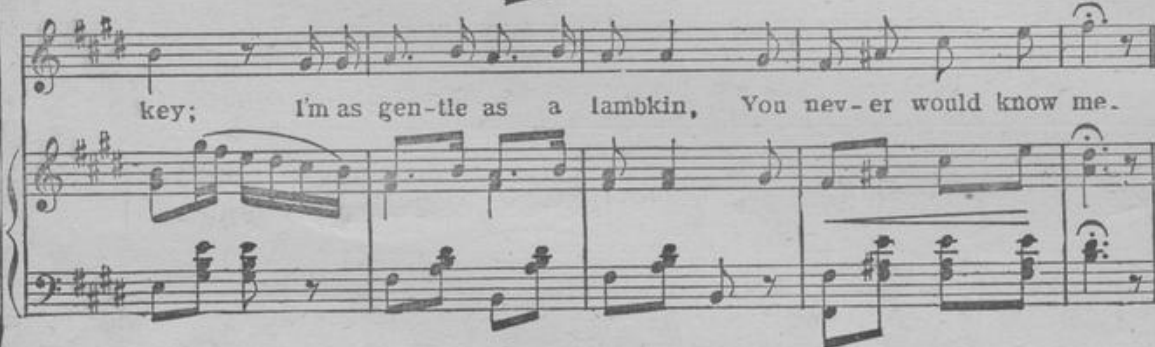


cut him and I shoot him and I wipe the earth with him, And I send him where the bad coons
sort of growls and I sticks ' out my chin, And I says, "Do you want to see,

Slower.



go!
me?" But when I talks to La-cy, I takes a dif-ferent

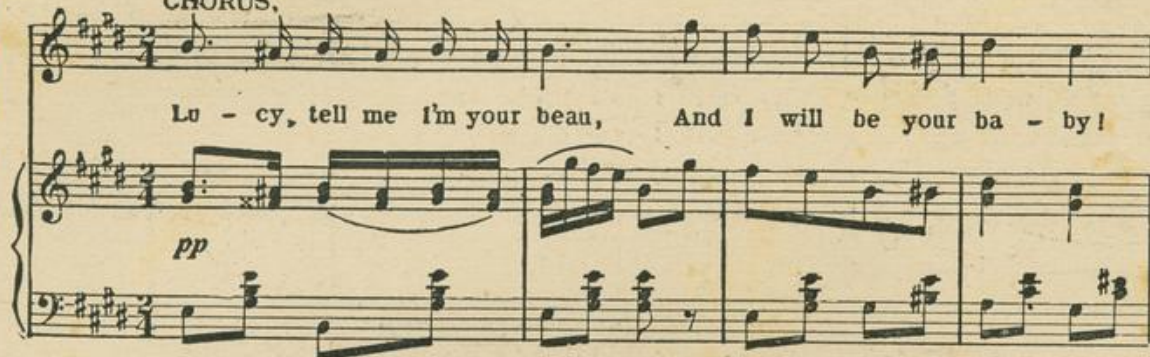


key; I'm as gen-tle as a lambkin, You nev-er would know me.

CHORUS.

Lu - cy, tell me I'm your beau, And I will be your ba - by!

pp



Lu - cy, dont you tell me no, or I'll go cra - zy, may-be, for I



love you, love you, love you so! I can't for-get you, nev - er!



You're the on - ly yel - low gal Can hold this coon for - ev - er!

