

The University of Maine

DigitalCommons@UMaine

Vocal Popular Sheet Music Collection

Public domain (may be downloaded in full)

1911

Boy O' Dreams

J. C Macy
Composer

Follow this and additional works at: <https://digitalcommons.library.umaine.edu/mmb-vp>

Recommended Citation

Macy, J. C, "Boy O' Dreams" (1911). *Vocal Popular Sheet Music Collection*. Score 4072.
<https://digitalcommons.library.umaine.edu/mmb-vp/4072>

This Book is brought to you for free and open access by DigitalCommons@UMaine. It has been accepted for inclusion in Vocal Popular Sheet Music Collection by an authorized administrator of DigitalCommons@UMaine. For more information, please contact um.library.technical.services@maine.edu.



SONGS

J. C. MACY

Good Night, Little Girl, Good Night

High Voice in C Medium Voice in B^b Low Voice in A^b
.60

Dear Little Heart

High Voice Medium Voice
.60

Love's Lullaby

Medium Voice
.50

The Wishing-Well

Medium Voice
.50

The Dolls' Party

Medium Voice in A^b
.60

Boy o' Dreams

High Voice in C; Low Voice in A^b
.50

Boston

OLIVER DITSON COMPANY

Chas. H. Ditson & Co.
New York

Lyon & Healy
Chicago

Vp. 013329

1911

Boy

h Voice G,
v Voice E \flat



(Original Key)

FRED H. HYATT

PERCY ELLIOTT

Moderato con espress. *condrio*

VOICE Out in the hap - py

PIANO

world to-day A thou-sand birds are sing - ing: And o'er ev-ry field it is

bright and gay, Where blos-soms fair are spring - ing.

Copyright MCMVI by Oliver Ditson Company
International Copyright Secured

Price 60¢

High Voice in C, 60¢ Medium Voice in B \flat , 60¢ Low Voice in A, 60¢
Duet for Soprano and Alto or Tenor and Baritone, 60¢ with Violin Obbligato

CLIFTON BINGHAM

EMERSON JAMES

Slowly, with expression

VOICE When we're to - geth - er, Life is so dear, It is such

PIANO

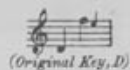
glad-ness hav - ing you near, Bright seems the day, love, Blue is the

sky. When we're to - geth - er, When we're to - geth - er,

Copyright 1908 by The Frederick Harris Company

ROSES, ROSES EVERYWHERE

High Voice D
Med. Voice C
Low Voice A



(Original Key, D)

CLIFTON BINGHAM

H. TROTÈRE

Tempo di Valse

VOICE

PIANO

Andante moderato e espressivo

The spring has come to

make the land With bud and blos-som sweet, Now

(If sung as a duet, the performers could sing every four or eight alternate measures at discretion)

WHERE BLOSSOMS GROW (SPRING SONG)

High Voice D \flat
Med. Voice A \flat



(Original Key, D \flat)

JOHN VANCE CHENEY

GERTRUDE SANS SOUCI

Allegro agitato

VOICE

PIANO

Where blos - soms grow.

And winds are low. And

Copyright MCMVI by Oliver Ditson Company

BOY O' DREAMS

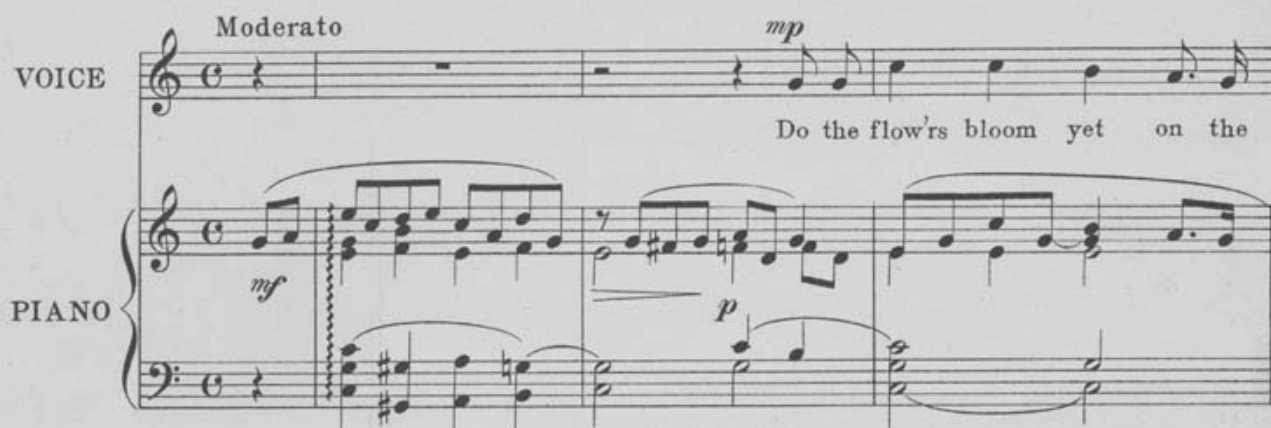

(Original Key, A^b)

Words and Music by
J. C. MACY

VOICE *Moderato* *mp*

Do the flow'rs bloom yet on the

PIANO *mf* *p*



espress.

old, old sod, Boy o' Dreams, Boy o' Dreams: Where the

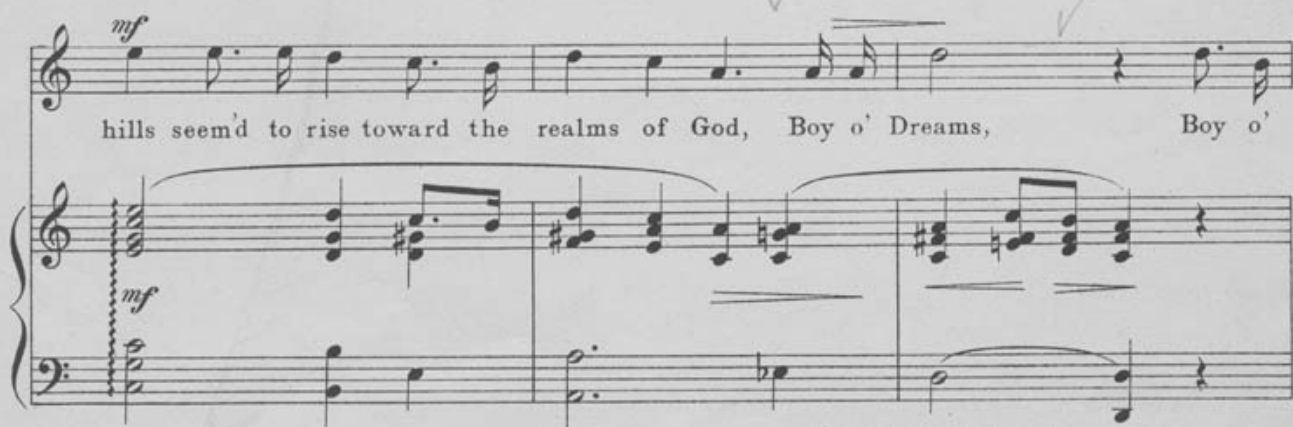
dolce



mf

hills seem'd to rise toward the realms of God, Boy o' Dreams, Boy o'

mf



Copyright MCMXI by Oliver Ditson Company
International Copyright Secured

Bagaduce Music
Lending Library
Blue Hill, Maine

Donor: 0

5-79-68783-3

p

Dreams? Are the hours as peace - ful the whole night thro', Are the

f

days yet fill'd with won - ders new? Are the fair - y homes we built just as

rit.

beau - ti - ful to view, Boy o' Dreams, Boy o' Dreams?

pp *rit.* *pa tempo*

mp *espress.*

Oh, the deeds we'd do, when, as men, we'd be strong, Boy o' Dreams, Boy o'

p

mf

Dreams! Oh, the joy in our heart, oh, the laugh and the song, Boy o' Dreams, Boy o'

dolce *mf*

p

Dreams! Ah, well! who cares if they ne'er came true, Those dreams that were sent to

p

f

me and to you; Let the heart still be glad, and the castles yet in view, Like the

f

f *molto rit.* *p*

visions that were giv'n to me and to you—Visions fair, Boy o' Dreams!

p *f* *p molto rit.* *pp*

Ed.

SWEET BE YOUR DREAMS

High Voice B♭
Med. Voice A♭
Low Voice F

EDMUND BINGHAM

EMERSON JAMES



Slowly and tenderly

VOICE

PIANO

p dolciss. *rall.*

Andante grazioso

O'er the world now the shadows creep, Day dies in the

p legato

west, Stars that in Heav'n a wake from sleep, speak once more of rest.

poco cresc. *poco cresc.*

Copyright 1908 by The Frederick Harris Company
Oliver Ditson Company sole owners for U.S. of America

Price 60¢

FIRELIGHT FACES

Med. Voice A
Low Voice F



(Original Key)

Words and Music by
GERALD LANE

Lightly, but the time well accentuated

PIANO

mf *rit.*

mp *p*

In the chimney corner, when the day is done,

Sits a little maiden, dreaming all alone: Building fairy castles of the

mf *mf*

bye-and-bye, Happy little maiden, knowing not a sigh!

High Voice A
Med. Voice G
Low Voice E♭



(Original Key, K♭)

FRANK L. STANTON

EUGENE COWLES

Moderato

VOICE

PIANO

p espress.

pp

Don't you mind the sor-rows, Don't you mind the sighs,

rit. *rit.*

Whilst the world goes sing'ing to the hal-le-lu-jah skies. Some-

Copyright MCMVII by Oliver Ditson Company
International Copyright Secured

Price 50¢

GOOD NIGHT, LITTLE GIRL, GOOD NIGHT

High Voice C
Med. Voice B♭
Low Voice A♭

JULIA M. HAYS



(Original Key, A♭)

J. C. MACY

Moderato

VOICE

PIANO

p *p*

I've told you the story you ask'd me to tell. And

rit. *a tempo* *rit.* *a tempo*

now "Good night" I say. So rest you, and slum-ber, and

rall. *p*

dream, if you will. But nev-er a sad dream, I pray. May

a tempo cresc. *a tempo* *cresc.*

all the world's glad-ness be yours, dear, And ev-ry day glo-ri-ous and

Copyright MCMXXVIII by Oliver Ditson Company