

1913

# Annual Report of the Municipal Officers of the Town of Levant for the Year 1912-1913

Levant (Me.)

Follow this and additional works at: <https://digitalcommons.library.umaine.edu/towndocs>

---

## Repository Citation

Levant (Me.), "Annual Report of the Municipal Officers of the Town of Levant for the Year 1912-1913" (1913). *Maine Town Documents*. 3897.

<https://digitalcommons.library.umaine.edu/towndocs/3897>

This Report is brought to you for free and open access by DigitalCommons@UMaine. It has been accepted for inclusion in Maine Town Documents by an authorized administrator of DigitalCommons@UMaine. For more information, please contact [um.library.technical.services@maine.edu](mailto:um.library.technical.services@maine.edu).

# KENDUSKEAG TRUST COMPANY

BANGOR, MAINE

CAPITAL \$100,000

SURPLUS \$100,000

CHARLES D. STANFORD, PRESIDENT  
GEORGE A. SAFFORD, TREASURER

FREDERICK W. HILL, VICE PRESIDENT  
H. E. COLLETT, SECRETARY



## DEVELOPING SERVICE

NO DEPOSITOR SHOULD FEEL THAT HIS BUSINESS AFFAIRS ARE OF TOO LITTLE CONSEQUENCE TO INTEREST THE OFFICERS OF THIS BANK. THEY ARE CONSTANTLY SEEKING NEW WAYS IN WHICH THE BANK CAN RENDER SERVICE TO ITS DEPOSITORS.

## ANNUAL REPORT

OF THE

MUNICIPAL OFFICERS

OF THE

# TOWN OF LEVANT

FOR THE YEAR

1912-1913

## KENDUSKEAG TRUST COMPANY

IF THERE IS ANY WAY IN WHICH THIS COMPANY CAN BE OF SERVICE TO YOU, DO NOT HESITATE TO CONSULT WITH ITS OFFICERS. THEY WILL APPRECIATE THE OPPORTUNITY OF GETTING "IN TOUCH" WITH YOU.

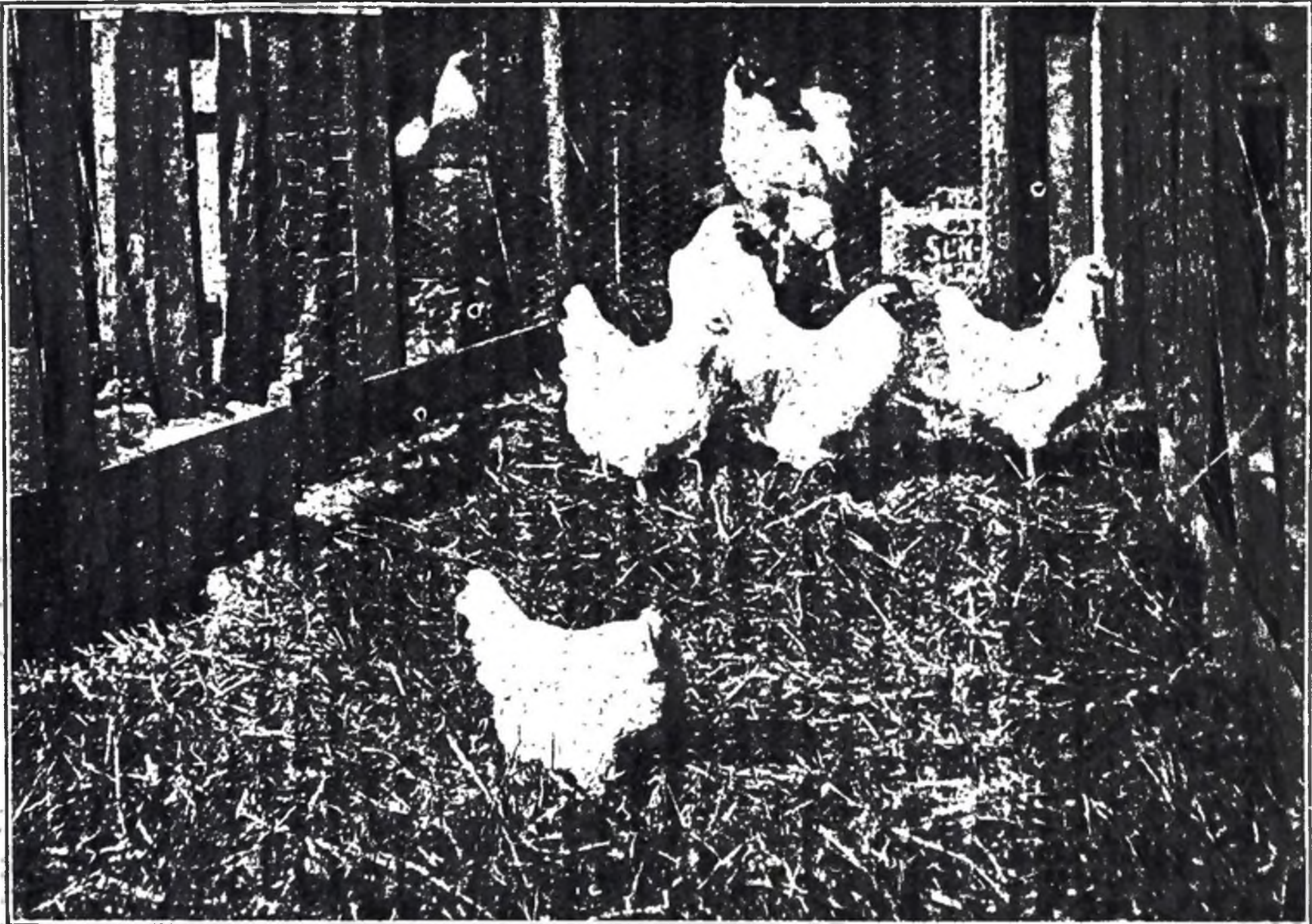
## Kenduskeag Trust Company

INTEREST ALLOWED ON DEPOSITS

34 BROAD STREET

BANGOR, MAINE

MAR 17 1913



One of Our Prize Winning Pens

**WEBSTER'S WHITE ORPINGTONS** Largest Smooth-Legged Bird in the World and Best Winter Layer

OUR MATING PENS FOR 1913

Have selected for mating pens about four hundred birds of standard size and color, excellent types and vigor, first class Orpington in every way.

DAY OLD CHICKS

We guarantee safe delivery and strong, healthy chicks. The demand for DAY OLD CHICKS is so great we have decided to sell a limited number this season. Last season we were unable to do this as our sale for eggs exceeded our supply, but we now have four hundred mated birds which will supply us with a sufficient quantity of eggs for this purpose.

FERTILITY OF EGGS

We will guarantee satisfactory hatches from our eggs. Our aim is to have satisfied customers and we will do our part and more if necessary to bring about this result.

**PRICES: THOROUGH-BRED BRED-TO-LAY**

EGGS FOR HATCHING:	13 for \$2.50	50 for \$7.00	100 for \$12.00
DAY OLD CHICKS, 35c. each	\$3.50 for 12	\$7 for 25	\$12 for 50 \$20 for 100

Orders for eggs and chicks will be booked and filled in rotation. Don't wait until you are ready to set them and then order, as we will book them as far in advance as the purchaser may desire. We require no money at the time order is booked, it is essential however that you make a remittance a few days in advance of the date on which the order is to be shipped.

Write name and address plainly to avoid wrong shipping.

ADDRESS ALL ORDERS TO

Webster Avenue

**JOHN. P. WEBSTER**

Bangor, Maine

# OUR BUSINESS

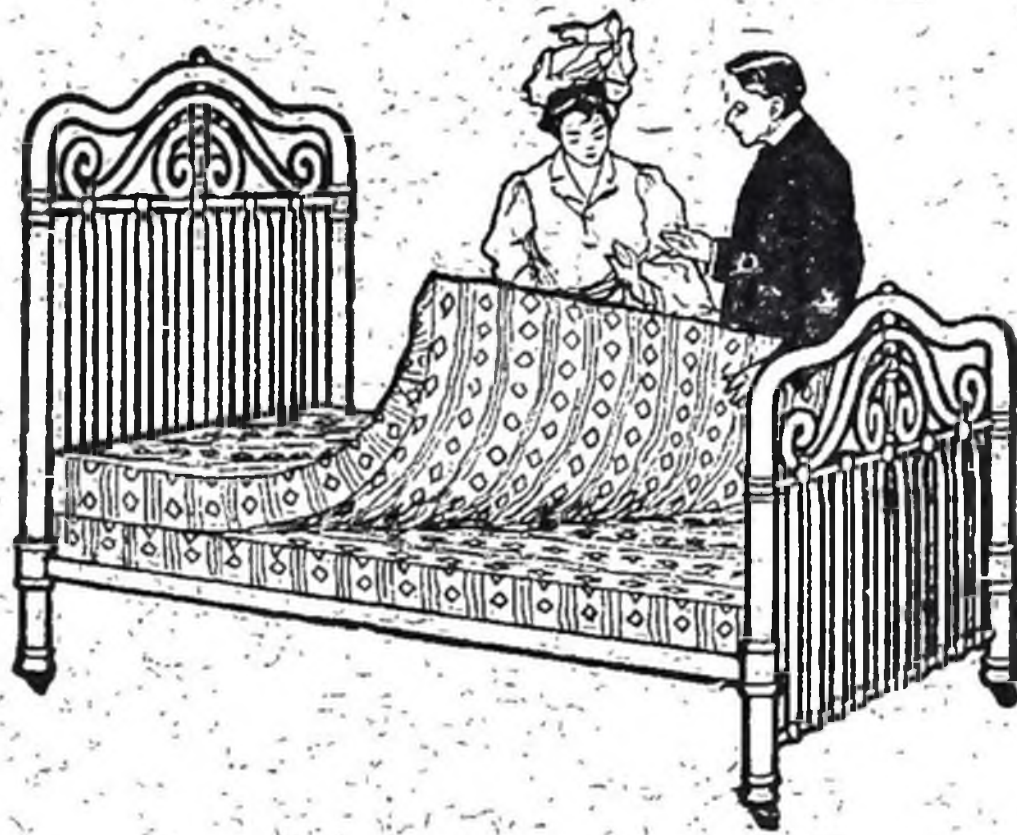
Furnishings of every description for the Home, Store,  
Office, Seashore, Lake or Country

WHOLESALE OR RETAIL

Our Mail Order Service offers you High Class Service  
in every department

## HODGKINS & FISKE CO.

190-192 EXCHANGE STREET  
BANGOR, MAINE



AGENTS FOR

GLENWOOD RANGES  
HOOSIER CABINETS

AGENTS FOR

WHITTALL RUGS  
BIGELOW RUGS

### THE WORLD'S BEST BY TEST

# The Shaw Business College

PORTLAND

AUGUSTA

BANGOR

gives thorough instruction in all of the Business branches including Shorthand, Typewriting and Telegraphy. It has the largest and best quarters and most complete and up-to-date equipment of any school of its kind in Maine.

BUSINESS MEN are supplied with competent office help free of charge. Free Catalog.

GEO. D. HARDEN, TREAS.

BANGOR, MAINE

## Wedding Cards

AND  
SOCIETY PRINTING

PRINTED

ENGRAVED

WE are especially well equipped with the newest and most select faces in type to do this class of work. We produce a *printed* wedding announcement or invitation that cannot be surpassed; in fact it compares very favorably with the best of *engraving* and at a great saving in price. If interested let us show you samples.

MAIL ORDERS SOLICITED

SEND FOR SAMPLES

The Thos. W. Burr Printing Co.

27 Columbia St., Bangor, Maine

PROPER GOODS, AT THE PROPER TIME, AT A PROPER PRICE

## The WOOD & EWER COMPANY'S MAIL ORDER SERVICE

offers you the same high class service as if you were in the store yourself. Experienced shoppers from among the saleswomen shop for your interests.

COATS      SUITS      CHILDREN'S GARMENTS .      WAISTS  
UNDERWEAR      CORSETS      DOMESTICS  
HOME FURNISHINGS, ETC.

may be ordered by mail and goods are shipped same day order is received

THE FASHION      WOOD & EWER CO.  
BANGOR, MAINE

7268



# Report of Selectmen, Assessors and Overseers of Poor

*For the Municipal Year 1912*

Incorporated June 14, 1813

Population 1910 census 707

*To the tax payers of Levant :*

We submit the following report as showing a correct statement of the business of the town for the year ending March 1, 1913.

## VALUATION AND ASSESSMENT FOR 1912.

### VALUATION

Real estate resident.....	\$161,140 00
"    non-resident.....	23,905 00
	<hr/>
Total real estate.....	\$185,045 00
Personal estate resident.....	\$50,418 00
"    non-resident.....	2,010 00
	<hr/>
Total personal estate.....	52,428 00
	<hr/>
Total valuation.....	\$237,473 00
Tax 23 mills on a dollar.....	\$5,461 87
200 polls at \$1.50 each.....	300 00
	<hr/>
	\$5,761 87

## AMOUNT ASSESSED

Raised by town for schools . . . . .	\$ 600 00	
“ “ poor . . . . .	500 00	
“ “ roads and bridges . . . . .	2,000 00	
“ “ contingent expenses . . . . .	600 00	
“ “ school books . . . . .	50 00	
“ “ school house repairs . . . . .	50 00	
“ “ State road . . . . .	300 00	
“ “ snow fences . . . . .	150 00	
“ “ memorial purposes . . . . .	15 00	
	<hr/>	
Total amount raised by town . . . . .		\$4,265 00
For County tax . . . . .	\$256 04	
State tax . . . . .	986 82	
Interest on local school fund . . . . .	84 73	
collecting B. T. moths . . . . .	36 25	
overlayings . . . . .	133 03	
	<hr/>	\$5,761 87
Supplementary taxes committed . . . . .		4 90
		<hr/>
Amount committed to F. A. Brown for collection . . . . .		\$5,766 77

## RESOURCES

Amount raised for support of schools . . . . .	\$ 600 00
support of poor . . . . .	500 00
roads and bridges . . . . .	2,000 00
contingent purposes . . . . .	600 00
school books . . . . .	50 00
school house repairs . . . . .	50 00
State road . . . . .	300 00
snow fences . . . . .	150 00
memorial purposes . . . . .	15 00
Amount raised overlayings . . . . .	133 03
Amount supplementary taxes . . . . .	4 90
Interest on local school fund . . . . .	84 73

From State on State pauper account . . . . .	173 01	
State road . . . . .	388 57	
State aid . . . . .	276 00	
burial of E. E. Willard . . . . .	35 00	
tuition . . . . .	70 00	
Town clerk for dog license . . . . .	73 00	
School and mill fund . . . . .	602 42	
Common school fund . . . . .	443 88	
Equalization fund . . . . .	59 14	
Tuition from Glenburn . . . . .	10 25	
	<hr/>	\$6,578 93

## DISBURSEMENTS

Paid for support of schools . . . . .	\$1,831 75	
school house repairs and supplies . . . . .	89 31	
memorial purposes . . . . .	2 70	
support of poor . . . . .	565 63	
State road . . . . .	688 57	
contingent expenses . . . . .	696 59	
snow fences . . . . .	123 35	
roads and bridges . . . . .	1,416 44	
soldiers burial . . . . .	35 00	
road machine . . . . .	225 00	
school books . . . . .	75 40	
tuition . . . . .	70 00	
interest on local school fund . . . . .	84 73	
	<hr/>	\$5,904 47

## COMMON SCHOOL FUND

Total fund . . . . . \$1,800 42

*Expenditures*

Over expended last year . . . . .	\$ 48 07	
Total orders drawn . . . . .	1,831 75	
	<hr/>	\$1,879 82
Fund over-expended . . . . .	\$79 40	



## MEMORIAL FUND

Amount raised . . . . . \$15 00

*Orders Drawn*

No.	9	To A. O. Wing, for flags . . . . .	\$ 2 70	
		Unexpended . . . . .	12 30	
			<hr/>	\$15 00

## SCHOOL HOUSE FUND

Raised by town . . . . . \$50 00

*Orders Drawn*

No.	1	F. L. Griffin, repairs . . . . .	\$ 2 45	
	7	J. A. Emerson, repairs . . . . .	9 40	
	10	Mrs. Nellie Nowell, for cleaning . .	3 00	
	11	F. L. Griffin, repairs and cleaning	8 70	
	43	C. A. Emerson, cleaning . . . . .	6 00	
	44	C. E. McGray, repairs, etc. . . . .	9 40	
	45	Snow & Nealley, for paint, etc. . . .	5 43	
	69	Penobscot Lumber Co., for storm windows . . . . .	15 00	
	77	L. N. Bemis, school supplies . . . . .	3 18	
	87	F. L. Griffin, repairs . . . . .	4 25	
	89	C. W. Fernald, for supplies and re- pairs . . . . .	14 25	
	108	S. R. Griffin, repairs and cleaning	8 25	
			<hr/>	\$89 31

## PAUPER FUND

Amount raised . . . . .	\$500 00	
Due from Monticello, for Winnie Gould . . . . .	25 53	
From State, on account of Mary J. Rogers . . . . .	173 01	
	<hr/>	\$698 54

*Orders Drawn*

No.	2	Emily J. Willard, board of Mary J. Rogers.....	\$39 00	
	12	C. W. Fernald, for clothing, etc., R. P. Curtis.....	10 45	
	21	C. W. Fernald, clothing and medicine Mary J. Rogers.....	4 80	
	25	Emily J. Willard, board of Mary J. Rogers.....	39 00	
	36	F. A. Brown, cash on acct. of Bragg children.....	2 25	
	41	Emily J. Willard, for board Mary J. Rogers.....	39 00	
	42	C. W. Fernald, for clothing, Mary J. Rogers.....	3 50	
	61	D. Matheson, supplies, R. P. Curtis.....	24 09	
	64	C. W. Fernald, supplies R. P. Curtis	23 72	
	65	Miller & Webster, clothing, R. P. Curtis.....	13 00	
	67	Emily J. Willard, board of Mary J. Rogers.....	39 00	
	68	C. W. Fernald, clothing, etc., Mary J. Rogers.....	8 71	
	70	W. D. Mathewson, supplies for R. P. Curtis.....	46 13	
	82	City of Bangor, supplies for R. P. Curtis.....	35 98	
	121	City of Bangor, med. treatment wife of Warren Curtis.....	15 00	
	122	John Kelleher, burial of Curtis child	14 00	
	130	Hartland, for board of Bragg children.....	208 00	
				\$565 63
		Unexpended.....		132 91
				<hr/> \$698 54

## CONTINGENT FUND

Amount raised . . . . . \$600 00

*Orders Drawn*

No.	3	E. E. Mayhew, destroying B. T. moths . . . . .	\$ 6 00
	4	L. L. Nowell, destroying B. T. moths . . . . .	25 00
	5	H. W. Waugh, destroying B. T. moths . . . . .	5 25
	6	E. F. Dillingham, office supplies	8 10
	8	G. M. Hodgdon, services as moderator . . . . .	2 00
	23	Frank Brown, stationery . . . . .	3 80
	27	Thos. W. Burr Co., printing reports	20 70
	28	C. M. Conant, wheel scraper . . . . .	43 00
	29	C. M. Conant, repairs on old road machine . . . . .	9 05
	37	P. H. Waugh, work in cemetery . . .	3 00
	49	E. C. Henderson, work in cemetery	4 00
	50	L. L. Nowell, material and labor on sheds . . . . .	21 79
	57	R. W. McLaughlin, services as ballot clerk . . . . .	6 00
	58	G. E. Read, services as ballot clerk	6 00
	83	Dr. D. W. Sheldon, return of vital statistics . . . . .	2 00
	84	C. W. Fernald, services as supt. of schools . . . . .	90 00
	88	Newell White, for B. T. M. notices, etc. . . . .	2 00
	109	W. N. Batchelder, for work in cemetery . . . . .	1 00
	110	C. W. Fernald, for cash paid out . . .	11 00
	111	E. H. Waugh, for material and repairs on town house . . . . .	9 13

112	Eben French, for sheep and lamb killed by dog.....	9 00	
113	E. C. Ryder, for counsel .....	2 00	
114	John F. Perkins, for porting notices	2 50	
115	J. F. Benjamin, M.D., return of vital statistics.....	9 75	
119	W. S. Purington, M.D., return of vital statistics.....	4 00	
120	C. F. Wilson, services as town clerk	39 36	
135	L. M. Harvey, services as select- man, etc.....	28 00	
136	I. H. Goodwin, services as selectman etc.....	48 00	
137	C. W. Fernald, services as select- man, etc.....	106 00	
138	F. A. Brown, services as constable.	12 00	
139	F. A. Brown, collecting and treas- uring.....	144 16	
140	F. A. Brown, abatement of taxes ..	10 50	
141	F. A. Brown, for cash pd. out.....	2 50	
		<hr/>	\$696 59
	Overdrawn.....	\$96 59	

## STATE ROAD FUND

By balance unexpended last year.....	\$198 82	
assessment.....	300 00	
from State.....	300 00	
	<hr/>	\$789 82

*Order Drawn*

No. 91 To F. A. Brown for cash paid for State road orders.....	\$688 57	
Unexpended.....	101 25	
	<hr/>	\$789 82

## SNOW FENCE FUND

Amount raised . . . . . \$150 00

*Orders Drawn*

No. 92	F. A. Brown, for cash paid for orders given by N. W. Wing . . . . .	\$35 56	
107	F. A. Brown, for cash paid for orders given . . . . .	44 76	
132	F. A. Brown, for cash paid for orders given by C. H. Eldridge . . . . .	43 03	
		<hr/>	\$123 35
	Unexpended . . . . .		26 65
			<hr/>
			\$150 00

## SOLDIERS BURIAL FUND

No. 24	A. O. Staples, for burial of E. E. Willard . . . . .	\$35 00
	Reimbursed by State . . . . .	35 00

## ROAD MACHINE FUND

Appropriated from treasury . . . . . \$225 00

*Order Drawn*

No. 26	C. M. Conant Co., for road machine . . . . .	\$225 00
--------	--	----------

## ROAD FUND

Amount raised . . . . . \$2,000 00

*Orders Drawn*

No. 22	G. E. Milliken, for labor on highway 1911.....	\$ 3 32	
48	C. M. Conant Co., for culvert.....	25 05	
66	Morse & Co., for plank.....	40 74	
78	L. N. Burns, for spikes, etc.....	4 82	
108	F. A. Brown for orders paid.....	422 60	
128	F. A. Brown ".....	469 29	
133	F. A. Brown ".....	450 62	
		<hr/>	\$1,416 44
	Unexpended .....		583 56
			<hr/>
			\$2,000 00

## SCHOOL BOOK FUND

Amount raised..... \$50 00

*Orders Drawn*

No. 38	E. E. Babb & Co., for school books	\$11 32	
81	Ginn & Co. ".....	15 12	
125	American Book Co., for school book	48 96	
		<hr/>	\$75 40
	Over expended.....	\$25 40	

## TUITION FUND

39	Hampden Academy, tuition of Eleanor Parkhurst.....	\$10 00	
123	Hampden Academy, tuition of Thelma Read.....	10 00	
124	M. C. I., tuition of Mildred Emerson.....	20 00	
131	H. C. I. tuition H. Waugh, B. French and Ray Bemis.....	30 00	
		<hr/>	\$70 00
	Due from State.....	\$70 00	

## INTEREST FUND

Amount assessed . . . . .	\$84 73
---------------------------	---------

*Order Drawn*

No. 90 E. A. Brown, treas. for interest on local school fund . . . . .	\$84 73
---	---------

## STANDING OF TOWN MAR 1, 1913

Cash in treasury, March 1, 1913 . . . . .	\$1,761 62
Due from State on State Aid . . . . .	90 00
State pauper . . . . .	47 71
tuition . . . . .	70 00
dog licenses . . . . .	64 00
	\$2,033 33
Due from Monticello . . . . .	\$ 25 53
Due from school fund . . . . .	79 40
	\$2,138 26

*Liabilities*

Outstanding bills estimated . . . . .	35 00
	\$2,103 26

All of which is respectfully submitted,

C. W. FERNALD, I. H. GOODWIN, L. M. HARVEY,	}	Selectmen, Assesors and Overseers of Poor of Levant
---	---	---

# Report of Road Commissioner

C. H. Eldridge, Road Commissioner

## Orders Issued

No.	1	C. H. Eldridge.....	\$18 50
	2	E. L. Eldridge.....	9 50
	3	C. E. Mitchell.....	5 25
	4	A. R. Mitchell.....	19 65
	5	P. R. Norton.....	5 80
	6	Ora White.....	5 25
	7	C. W. Fernald.....	26 08
	8	E. L. Eldridge.....	5 60
	9	C. H. Eldridge.....	12 00
	10	C. E. Mitchell.....	6 00
	11	A. Casey.....	16 00
	12	Ralph Storer.....	71 50
	13	C. H. & E. L. Eldridge.....	18 12
	14	Ivin Eldridge.....	15 70
	15	E. L. Eldridge.....	3 00
	16	Lester Verrill.....	53
	17	G. N. Tibbetts.....	1 20
	18	Maurice Long.....	3 90
	19	C. W. Fernald.....	33 56
	20	C. H. & E. L. Eldridge.....	10 00
	21	Wade Pomeroy.....	2 80
	22	Joseph Stackpole.....	5 00
	23	A. D. McLaughlin.....	4 80
	24	P. R. Norton.....	2 45
	25	S. L. House.....	9 25
	26	Geo. Watson.....	3 17
	27	Joseph Stackpole.....	7 00
	28	H. W. Weston.....	11 78
	32	Emerson Ross.....	2 75
	33	John Bragg.....	11 75
	34	C. F. Wilson.....	6 37
	35	Bert Overlock.....	5 00
	38	Irvin Eldridge.....	9 75



39	C. H. & E. L. Eldridge . . . . .	47 41	
40	C. A. Emerson . . . . .	30 20	
41	C. H. Eldridge . . . . .	4 00	
			\$450 62

## SNOW FENCE

No.	29	C. A. Emerson . . . . .	\$11 48
	30	C. H. & E. L. Eldridge . . . . .	9 75
	31	C. W. Fernald . . . . .	2 63
	36	L. M. Harvey . . . . .	13 17
	37	Archie Brickett . . . . .	6 00
			\$43 03

## TOWN ROADS

*Orders Drawn*

No.	1	Orrin Houston, labor . . . . .	\$15 75
	2	Lester Nowell . . . . .	21 52
	3	George Barnes, bridge plank . . . . .	56 13
	4	Stanley R. Griffin, labor . . . . .	4 86
	5	Waldo Nowell, labor, less dynamite . . . . .	5 85
	6	E. C. Henderscn, labor . . . . .	10 00
	7	G. E. Read, labor . . . . .	24 21
	8	W. M. Shaw, labor . . . . .	12 00
	9	John F. Perkins, labor . . . . .	18 00
	10	Frank Tibbetts, labor . . . . .	20 83
	11	Chandler Tibbetts, bridge plank . . . . .	9 36
	12	Roy Goss, labor . . . . .	15 00
	13	W. H. Clark, " . . . . .	28 35
	14	Byron McLaughlin, labor . . . . .	3 50
	15	Howard Waugh, " . . . . .	4 00
	16	L. F. Tibbetts, " . . . . .	1 75
	17	Elmer Mayhew, " . . . . .	1 75
	18	Leander Tibbetts, " . . . . .	11 37

19	A. O. Staples,	"	4 00
20	John R. Clark,	"	4 57
21	John F. Perkins,	"	39 25
22	O. Hammond,	"	9 62
23	Frank Tibbetts,	"	11 00
24	F. E. Paine,	"	19 25
25	Ned W. Wing,	"	43 15
26	O. W. Griffin,	"	5 20
27	A. O. Staples,	"	4 80
28	Ned W. Wing,	"	17 75
29	John Hill, lighting road		10 00
30	Walter M. Shaw		3 50
35	George Barnes, lumber for bridge		6 50
36	B. W. Higgins, labor		2 10
37	M. Tolman, blacksmith work		3 55
38	Sumner T. Rose, labor		4 65
39	E. C. Henderson, lumber for culvert		1 50
40	Ned W. Wing, labor		3 30
41	John R. Clark, labor		3 00
42	G. E. Read		2 37

---

\$469 29

NED W. WING,  
Road Commissioner.

### SNOW FENCE



*Orders Drawn*

No.	31	F. E. Paine	\$ 5 00
	32	E. C. Henderson	4 00
	33	Lester Nowell	4 60
	34	Geo. Barnes, lumber	21 96

---

\$35 56

## SNOW FENCE

*Orders Drawn*

By A. D. EMERSON, Road Commissioner

No.	18	E. P. French . . . . .	\$10 35
	28	C. A. Emerson . . . . .	5 52
	30	A. D. Emerson . . . . .	9 50
	31	L. M. Harvey . . . . .	8 22
	32	S. A. French . . . . .	3 00
	33	I. H. Goodwin . . . . .	4 42
	34	C. W. Fernald . . . . .	3 75

## ROAD FUND

*Orders Drawn*

No.	1	F. L. Chase . . . . .	\$ 6 30
	2	F. S. Peabody . . . . .	8 75
	3	L. B. Norton . . . . .	20 72
	4	Chauncey Morrison . . . . .	25 50
	5	H. P. White . . . . .	6 60
	6	F. L. Chase . . . . .	4 50
	7	E. P. French . . . . .	16 00
	8	Wm. Q. French . . . . .	4 35
	9	Chas. Langley . . . . .	13 50
	10	E. H. Fitz . . . . .	2 00
	11	T. F. Gallagher . . . . .	16 50
	12	R. L. Buck . . . . .	9 00
	13	N. B. French . . . . .	1 75
	14	C. G. Wiggin . . . . .	6 00
	15	E. P. French . . . . .	16 00
	16	L. L. Goss . . . . .	7 50
	17	W. N. Batchelder . . . . .	16 50
	19	F. H. Corson . . . . .	14 60
	20	G. W. Emerson . . . . .	22 37

21	F. H. Corson.....	14 40
22	J. H. Stackpole.....	5 59
23	E. F. Waugh.....	10 78
24	T. N. Morrison.....	4 90
25	A. McLaughlin.....	1 05
26	E. M. Fitts.....	16 50
27	E. P. French.....	1 50
29	A. D. Emerson.....	100 92
35	L. M. Harvey.....	12 30
36	I. H. Goodwin.....	14 31
37	C. W. Fernald.....	3 76
38	John Linnell.....	1 40
39	Geo. Worthing.....	1 40
40	Will Tay.....	7 00
41	S. C. Titcomb.....	3 35
42	S. A. French.....	5 00
		\$422 60

A. D. EMERSON, Road Commissioner.

STATE ROAD

*Orders Drawn*

No.	1	Harry Hammond, labor.....	\$10 00
	2	Archie Mayhew ".....	12 25
	3	Elmer Mayhew, ".....	10 50
	4	B. H. Mayhew, ".....	17 50
	5	Ralph Storer, ".....	68 00
	6	Chauncey Morrison,.....	68 00
	7	A. D. Emerson, ".....	20 00
	8	Elmer Eldridge, ".....	20 00
	9	Frank Tibbetts, ".....	20 00
	10	W. H. Clark, ".....	20 00
	11	F. H. Wing, ".....	20 00

12	O. Hammond, hay and labor . . . . .	9 25
13	F. E. Paine, labor . . . . .	38 75
14	Harry Hammond, " . . . . .	13 62
15	A. O. Staples, " . . . . .	16 75
16	Archie Mayhew, " . . . . .	10 50
17	Elmer Mayhew, " . . . . .	8 75
18	Byron McLaughlin, " . . . . .	17 50
19	Wilbur Phillips, " . . . . .	29 75
20	Mrs. Lula Rose, crossing land, carting gravel . .	10 00
21	George Seavey, crossing land, carting gravel . . .	5 00
22	Ned W. Wing, labor . . . . .	83 75
23	C. W. Fernald, materials and labor . . . . .	16 20
24	Sumner T. Rose, materials and labor . . . . .	7 00
25	Ralph Storer labor . . . . .	20 00
26	Wilbur Phillips, " . . . . .	17 50
27	Ralph Storer, " . . . . .	8 00
28	Archie Mayhew, " . . . . .	1 75
29	Orlando Hammond, " . . . . .	5 25
30	F. H. Wing, " . . . . .	6 00
31	W. H. Clark, " . . . . .	12 00
32	Walter C. Storer, " . . . . .	10 50
33	F. E. Paine, material and labor . . . . .	20 50
34	Ned W. Wing, labor . . . . .	34 00

---

\$688 57

NED W. WING, Road Commissioner.

## Treasurer's Report

---

F. A. BROWN, Treas.

In account with *Town of Levant*

*Dr.*

To cash in tres. Mar. 1, 1912.....	\$1,362 75
tuition from Hermon.....	11 00
conveyance, Hermon.....	27 04
free high school.....	76 00
State aid.....	186 00
State Pauper.....	125 30
burial of soldier.....	35 00
State road.....	388 57
school and mill fund.....	602 42
common school ".....	443 88
equalization ".....	59 14
cash from town clerk for dog licenses.....	73 00
Int. L. S. F.....	84 73
tuition from Glenburn.....	10 25
C. M. Conant, allowance slip.....	4 00
Bert Overlock, rose pruner.....	30
commitment.....	5,761 87
supplementary tax.....	4 90
re-embursement on order 73 of 1911.....	1 50
due from State on State aid.....	90 00
on State pauper.....	47 71
as estimated on dog licenses to be refunded...	64 00
due from State on tuition.....	70 00
	\$9,529 36

*Cr.*

By town orders.....	\$5,904 47	
dog licenses, paid.....	73 00	
State aids.....	276 00	
County tax paid.....	256 04	
State tax paid.....	986 82	
	————	\$7,496 33

All of which is respectfully submitted.

FRANK A. BROWN,  
Treasurer of Levant.

# Superintendent of Schools' Report

FOR THE YEAR ENDING MARCH 1, 1913

To C. A. Emerson, F. L. Griffin, S. R. Griffin, and citizens of Levant, Maine, I submit the following report:

Amount raised by town.....	\$600 00
By school and mill fund.....	602 42
common school fund.....	443 88
equalization fund.....	59 14
Int. on L. S. F. orders.....	84 73
tuition from Glenburn.....	10 25
	<hr/>
Total amount for schools.....	\$1,800 42

## *Expenditures*

Amount overdrawn last year.....	\$ 48 07
Amount paid for teachers wages including board.....	1,134 00
Amount paid for janitors services.....	37 50
conveying pupils.....	586 00
fuel.....	74 25
	<hr/>
	\$1,879 82
Amount overexpended.....	\$79 40

## TEACHERS' WAGES INCLUDING BOARD

### *Spring Term*

School No.	1	Edith Tibbetts,	9 weeks	.....	\$81 00
“	5	Mrs. Edith Waugh,	9 “	.....	90 00
“	8	Mrs Laura R. McLaughlin,	9 weeks	...	81 00
“	9	Mrs. Myra Andrews,	“	...	81 00
“	11	Grace Brann,	“	...	81 00



*Fall Term*

"	1	Edith Tibbetts,	8	"	...	\$72 00
"	5	Mrs Edith Waugh,	8	"	...	80 00
"	8	Mrs. Laura R. McLaughlin	8	"	...	72 00
"	9	Laura J. Wiggin,	8	"	...	64 00
"	11	Eleanor Parkhurst,	8	"	...	72 00

*Winter Term*

"	1	Edith Tibbetts,	8 weeks	...	\$72 00	
"	5	Mrs. Edith Waugh,	8	"	...	80 00
"	8	Mrs. Laura R. McLaughlin,	8	"	...	72 00
"	9	Laura J. Wiggin,	8	"	...	64 00
"	11	Eleanor Parkhurst	8	"	...	72 00

Total.....	\$1,134 00
------------	------------

CONVEYING PUPILS

Mary Curtis.....	\$ 9 00
Mrs. Edith Phillips.....	36 00
Mrs. Edith Waugh.....	13 00
J. A. Moore.....	45 00
E. A. Cowan.....	45 00
W. W. Goss.....	18 00
C. A. Emerson.....	36 00
Mrs. Jennie Call.....	32 00
G. A. French.....	36 00
J. A. Moore.....	40 00
Mrs. Mary Curtis.....	8 00
W. W. Goss.....	16 00
Mrs. Edith Phillips.....	32 00
C. A. Emerson.....	32 00
A. F. Brann.....	36 00
G. A. French.....	32 00
G. M. Hodgdon.....	32 00

Mrs. Edith Phillips.....	32 00
Mrs. Mary Curtis.....	8 00
C. A. Emerson.....	32 00
W. W. Goss.....	16 00
	<hr/>
Total.....	\$586 00

## JANITORS

Lillian E. Nowell.....	\$2 25
Robert Nowell.....	4 00
Avis M. Verrill.....	2 25
Louise A. Palmer.....	2 25
Walter Goodwin.....	2 25
Walter Goodwin.....	2 00
Avis M. Verrill.....	2 00
Lura J. Wiggin.....	2 00
Lillian Nowell.....	2 00
Robert Nowell.....	4 00
Ervin R. Goodwin.....	2 00
Lura J. Wiggin.....	2 00
Robert Nowell.....	4 00
Henry Dillon.....	2 00
A. E. Giles.....	2 50
	<hr/>
	\$37 50

## FUEL

C. A. Emerson.....	\$22 50
Eben French.....	13 50
Nathan French.....	18 00
B. W. Higgins.....	17 25
S. R. Griffin.....	2 00
F. L. Griffin.....	1 00
	<hr/>
	\$74 25

I found on April 1, 165 scholars in town. There has been a decided improvement in the attendance of scholars in the schools the past year. The teachers employed worked hard to make the schools a success, and at the close of the year the improvement was marked. I believe more can be done to help the schools by approving what is good in their management and encouraging those in charge to better work than by constantly finding fault at what is not just as it should be.

Respectfully submitted,

C. W. FERNALD,  
*Supt. of Schools.*





# Shop in Bangor and Save Your Railroad Fare

The Retail Merchants' Association Fare-Refund Plan  
Gives You Free Transportation. Purchases  
May Be Made at 25 Leading Stores

FOR INFORMATION WRITE

## CHAMBER OF COMMERCE

CITY HALL

BANGOR

### THE "BIG CITY" STORE

---

Will deliver to your door, all charges  
prepaid, anything you need in

RUBBER GOODS

TOILET GOODS

STATIONERY

CANDIES

Or anything from our big stock of  
Drug Store Sundries

---

Write for Free Booklet on "Rexall Remedies"

---

Fowler's "REXALL" Store

BANGOR, MAINE

Letter Heads, Bill Heads, Envelopes,  
Blanks, Notes, Receipts, Posters, Hand-  
bills, Circulars, Programs, Society and  
Wedding Printing, Booklets, Reports,  
By-Laws, Etc.

### ORDER BY MAIL

---

All Mail Orders receive Prompt  
Attention and Personal Care

BOOK AND JOB

**PRINTING**

The Thos. W. Burr Printing Co.

27 Columbia St. Adams Building

BANGOR, MAINE

Thomas W. Burr,  
President

W. S. Burbank,  
Treasurer

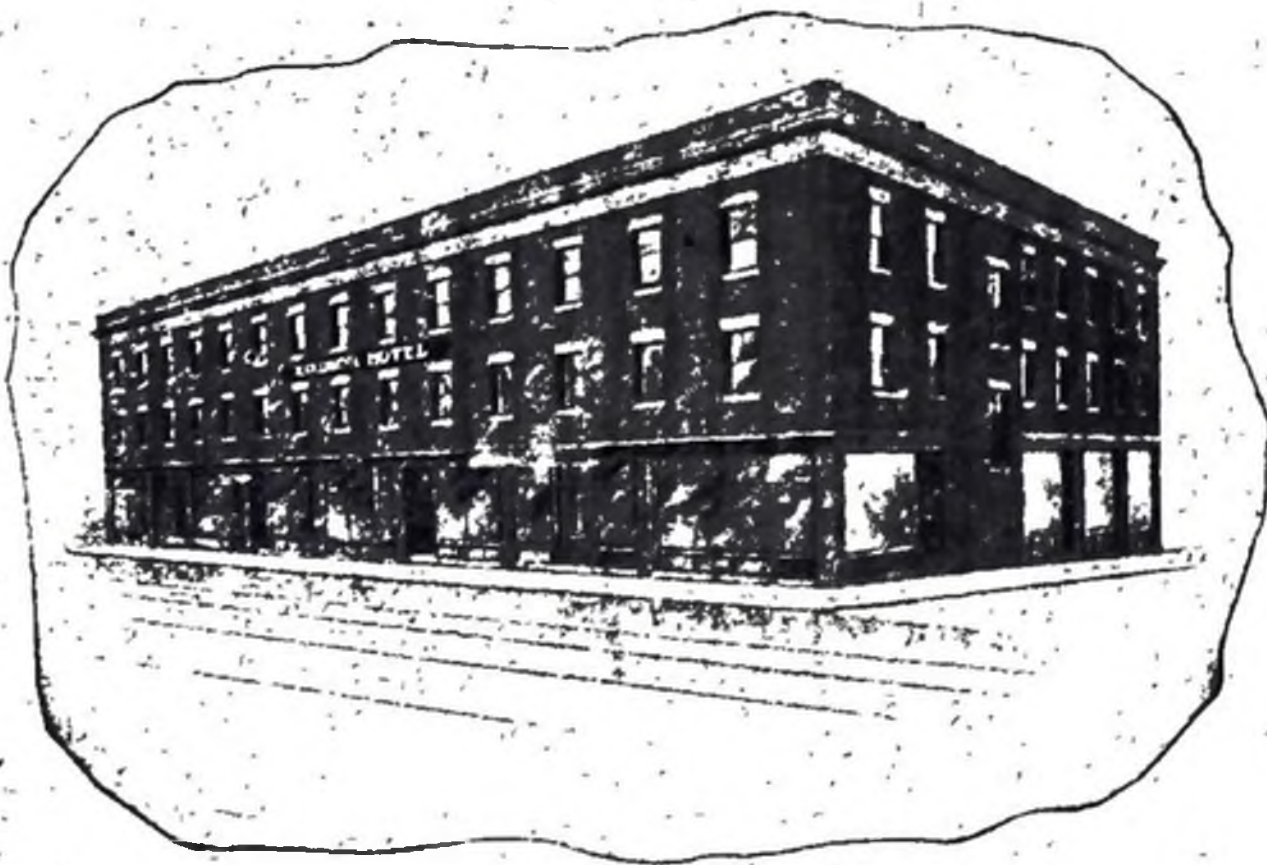


## Bangor Agricultural Warehouse and Seed Store

We are headquarters for Farming Implements, Garden, Field and Grass Seed. Also Wind Mills, Pumps, Pipe Fittings, etc. — SEND AND GET OUR CATALOGUE.

**R. B. DUNNING & CO.,**

54, 58 and 62 Broad St., Bangor, Me.



KANE'S CAFE CONNECTED

## WINDSOR HOTEL

EUROPEAN PLAN

F. W. DURGIN, Proprietor

BANGOR, MAINE

Rooms with hot and cold running water,  
\$1.00 each person  
Rooms with private bath and toilet,  
\$1.50 each person

# LADIES AND GENTLEMEN

If you are going to have a Theatrical Performance, why not have the Make-up, Wigs that go with it, also Beards, Moustaches, etc. Wigs, 50c. Beards, all styles, 25c. Moustaches, 25c. Imperials, 15c. Negro Wigs, 25c. For the dress rehearsal and play, to be returned next day.

We carry in stock or make to order all styles of Hair Goods, also Gentlemen's Toupees made on the premises. Finest Work.

## LOVERING'S EUROPEAN HAIR STORE

52 MAIN STREET

BANGOR, MAINE

# WEDDING

# CARDS

AND

# SOCIETY PRINTING

PRINTED

ENGRAVED

We are especially well equipped with the newest and most select faces in type to do this class of work. We produce a *printed* wedding announcement or invitation that cannot be surpassed; in fact it compares very favorably with the best of *engraving* and at a great saving in price.

If interested, let us show you samples.

MAIL ORDERS SOLICITED

SEND FOR SAMPLES

## The Thomas W. Burr Printing Co.

27 COLUMBIA STREET

BANGOR, MAINE

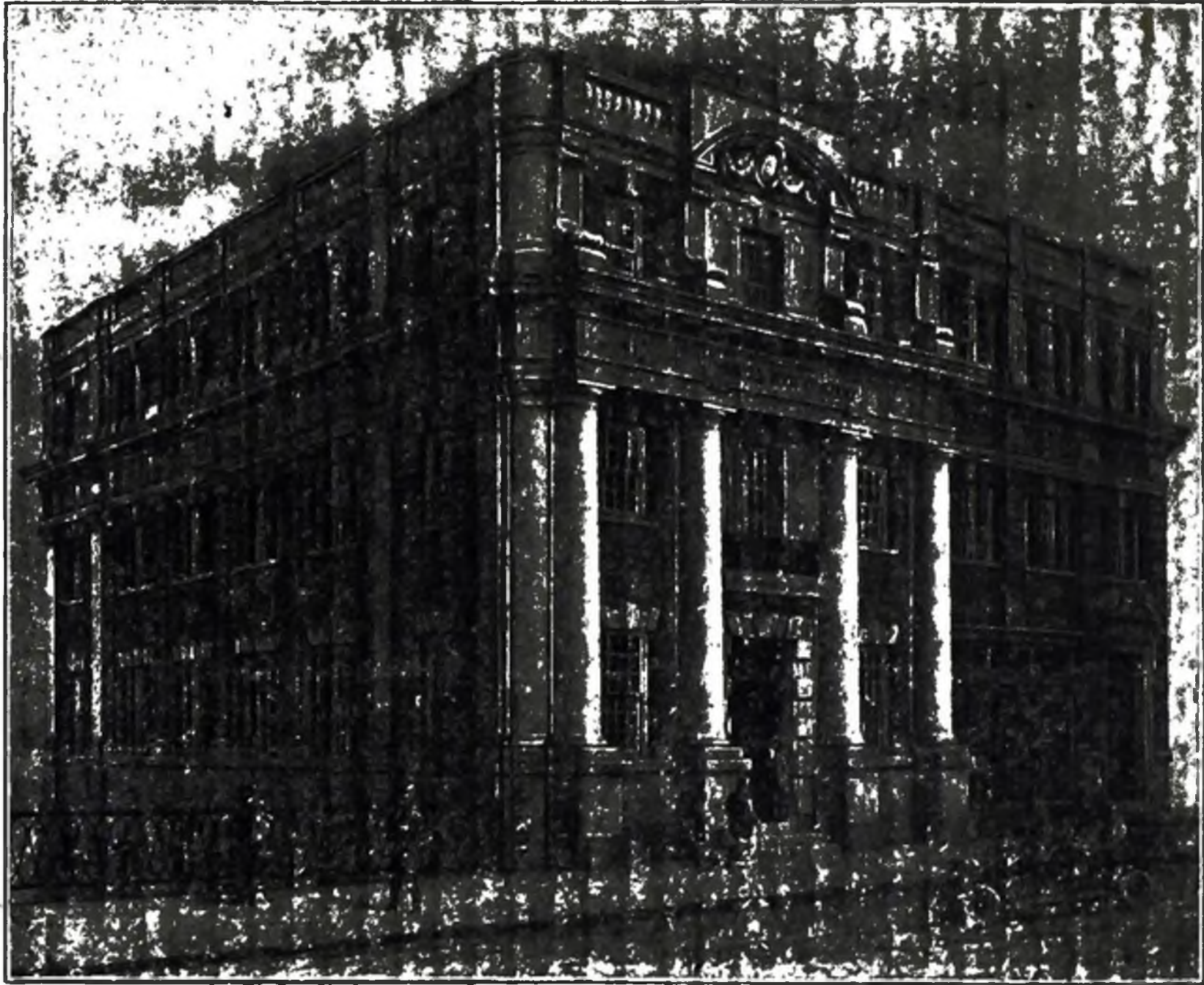
---

PROPER GOODS, AT THE PROPER TIME, AT A PROPER PRICE

---

**Printing** should be attractive to catch the eye and persuade the reader. It should have that distinctive individuality that says, "Here is something worth while." We have every facility for producing the highest quality of work at the most reasonable prices. With direct personal supervision we obtain that "distinctive" appearance in each piece of work that has marked our output for so many years.





---

---

# MERRILL TRUST COMPANY

BANGOR, MAINE

Capital \$200,000

Surplus \$175,000

---

Legal Depository for State, County, City, Town and Village Funds

---

Receives Deposits Subject to Check and  
Allows Interest on Daily Balances

---

**ALLOWS INTEREST ON TIME DEPOSITS**

---

Offers for sale Investments in denominations of \$100, \$500 and \$1000  
to net the investor from 4 1-2 to 5 1-2%

---

**RENT BOXES IN  
THE NEW BANGOR SAFE DEPOSIT VAULTS**

---

The Most Massive Fireproof and Burglar Proof Vaults North of Boston