

The University of Maine

DigitalCommons@UMaine

Vocal Popular Sheet Music Collection

Public domain (may be downloaded in full)

1914

Sylvia : Song

Oley Speaks
Composer

Clinton Scollard
Lyricist

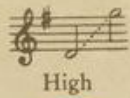
Follow this and additional works at: <https://digitalcommons.library.umaine.edu/mmb-vp>

Recommended Citation

Speaks, Oley and Scollard, Clinton, "Sylvia : Song" (1914). *Vocal Popular Sheet Music Collection*. Score 3557.

<https://digitalcommons.library.umaine.edu/mmb-vp/3557>

This Book is brought to you for free and open access by DigitalCommons@UMaine. It has been accepted for inclusion in Vocal Popular Sheet Music Collection by an authorized administrator of DigitalCommons@UMaine. For more information, please contact um.library.technical.services@maine.edu.



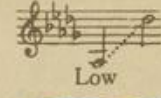
High



Medium



Medium



Low

SYLVIA



SONG

By

OLEY SPEAKS

Price, 60 cents, net

Price, 50 cents, net
CHORAL VERSIONS

Octavo No.		Price
6890	For Men's Voices (4-part)	.15, net
7007	" Mixed " (4- ")	.15, "
7008	" Women's " (4- ")	.15, "
7527	" " " (3- ")	.15, "

VOCAL DUETS

For Soprano and Tenor .50, net
 " Alto and Baritone .50, "



ORCHESTRA

Key of G (With "Morning" by Speaks)
 S. O., \$1.25 F. O., \$1.75

PIANO SOLO

Price, 60 cents, net

Price, 50 cents, net (to U. S. A.)

BAND

Price, 75 cents

G. SCHIRMER (INC.), NEW YORK

Vp. 011906
 1914
 SYL

Sylvia

Clinton Scollard

Oley Speaks

Andantino espressivo

Voice

Piano

mp

con pedale

mp

Syl - via's hair is like the night, Touched with glanc - ing star - ry beams;

pp

Such a face as drifts thro' dreams, This is Syl - via to the sight.

Published also as Part-Song; for men's voices, 8^{vo} No. 6890, 15 cents, net; for mixed voices, 8^{vo} No. 7007, 15 cents, net; for women's voices, 8^{vo} No. 7008, 15 cents, net.

24973 c

Copyright, 1914, by G. Schirmer, Inc.
Printed in the U. S. A.



And the touch of Syl - via's hand Is as light as milk - weed down,

cantando

L.H.

When the meads are gold - en brown, — And the au-tumn fills the

land.

p

Syl - via: - just the e - cho - ing Of her voice brings back to me,

pp

poco rit.

From the depths of mem - o - ry, All the love - li - ness of spring:

colla voce

pp Syl - vi - a! *pp* Syl - vi - a!

a tempo *L.H.*

mp

Such a face as drifts thro' dreams, This is Syl - via to the

ten. *rit. e dim.*

rit. e dim.

p sight.

mf a tempo *rit.*

OLEY SPEAKS

Complete List of Vocal Compositions

At Starlight-Time. *High, Med., Low*
 Back Again in Eldon
 High, Medium, Low
 Bells of Youth. *High, Low*
 Bend Low, O Dusky Night
 High, Low
 Call of the Lark. *High, Low*
 Charity. *High (or Medium)*
 Elysium. *High, Low*
 Eternity. *High, Low*
 For a Day. *High, Low*
 For Love of Thee. *High, Low*
 A Garden Idyl. *High, Low*
 Her Rose. *High, Low*
 The Hills of Dawn. *High, Low*
 Joys of June. *High, Low*
 June-Time. *High, Low*
 The Lane to Ballybree. *High, Low*
 The Lassie I Love Best. *High, Low*
 Life's Twilight. *High, Medium, Low*

SECULAR SONGS

Little House o' Dreams
 High, Medium, Low
 A Little Way to Walk With You
 High, Low
 Love of Yesteryear. *High, Med., Low*
 Memory of You. *High, Medium, Low*
 Morning. *High, Medium, Low*
 Mother. *High, Low*
 My Homeland. *High, Medium, Low*
 Pegging Along. *High, Medium, Low*
 The Quiet Road. *High, Low*
 Rainbow-Land. *High, Low*
 Realization. *High, Medium, Low*
 Reveries. *High, Low*
 The Secret. *High, Low*
 Serenade. *High, Low*
 A Song of Gladness. *High, Low*
 Song of Spring. *High, Low*

Song of Waiting. *High, Medium, Low*
 Star-Eyes. *High, Medium, Low*
 Summer in the Heart. *High, Low*
 Sylvia
 High, Medium-high, Medium-low, Low
 The Thought of You
 High, Medium, Low
 To One Unknown. *High, Low*
 To You. *High, Medium, Low*
 Toward the Sunrise. *High, Low*
 The Vagabond. *High, Medium, Low*
 Were I a King. *High, Medium, Low*
 When All the Bonny Birds
 High, Low
 When June Days Come Again
 High, Low
 When the Boys Come Home
 High, Medium, Low
 Where You, Beloved, Are
 High, Medium, Low
 Your Smile. *High, Medium, Low*

Again the Strains of "Holy Night"
 Medium
 Come Spirit of the Living God
 High, Low
 Day is Dying in the West
 High, Low
 The Evening Hour. *High, Low*
 Gently, Lord, Oh, Gently Lead Us
 High, Medium
 Hark, Hark, My Soul
 High, Medium, Low
 How Long Wilt Thou Forget Me?
 High, Medium, Low
 In Heavenly Love Abiding
 High, Medium, Low

SACRED SONGS

In the End of the Sabbath (Easter)
 High, Low
 It Came Upon the Midnight Clear
 (Christmas). *High, Low*
 The Lamp in the West
 High, Medium, Low
 Let Not Your Heart be Troubled
 High, Medium, Low
 Light at Evening-Time. *High, Low*
 The Little Christ is Coming Down
 (Christmas Carol). *Medium*
 The Lord is My Light
 High, Medium, Low

Now the Day is Over
 High, Medium, Low
 O, Master, Let Me Walk With Thee
 High, Low
 Saviour, Breathe an Evening Bless-
 ing. *High, Low*
 Some Sweet Day. *High, Medium*
 The Star of Hope. *High, Med., Low*
 The Sweet Story of Old. *High, Low*
 There's a Song in the Air (Christ-
 mas). *High, Medium, Low*
 Thou Wilt Keep Him in Perfect
 Peace. *High, Medium, Low*
 Twilight Dawn. *High, Low*

SACRED MIXED

6768 Gently, Lord, Oh, Gently
 Lead Us (Chaffin)
 6605 How Long Wilt Thou Forget
 Me? (Tenor Solo)
 6795 In the End of the Sabbath
 (Alto Solo—Easter) (Chaffin)
 7201 It Came Upon the Midnight
 Clear (Deis)
 6940 The Lamp in the West
 (Soprano Solo) (Chaffin)
 6915 Let Not Your Heart be Trou-
 bled (Soprano Solo) (Chaffin)
 6858 The Lord is My Light
 (Soprano Solo) (Chaffin)
 9014 The Lord is My Light
 (Soprano Solo) (Adapted for
 school use by Baldwin)
 6591 More Love to Thee, O Christ
 (Soprano Solo)
 6088 Now the Day is Over (Tenor
 Solo)
 6859 Some Sweet Day (Soprano
 Solo) (Chaffin)

CHORUS WORKS

SACRED MIXED (continued)

6604 Thou Wilt Keep Him in Per-
 fect Peace (Soprano Solo)
 6966 O Master, Let Me Walk With
 Thee (Chaffin)
 6967 Saviour, Breathe an Evening
 Blessing (Chaffin)
 6968 Day is Dying in the West
 (Chaffin)
 6755 Twilight and Dawn (Soprano
 Solo) (Chaffin)
 6958 The Evening Hour (Chaffin)
 6959 Light at Evening-Time
 (Chaffin)
 SECULAR MIXED
 7219 Morning (Baldwin)
 9013 Morning (Adapted for school
 use by Baldwin)
 7007 Sylvia (Gaines)
 9037 Sylvia (Adapted for school use
 by Baldwin)
 6785 When the Boys Come Home
 (Chaffin)

WOMEN'S VOICES

7151 At Starlight-Time (3-part)
 (With alto part and violin ad
 lib.)
 7065 The Bells of Youth (3-part)
 (Gaines)
 6626 Morning (3-part) (Chaffin)
 6895 Reveries (3-part) (Gaines)
 7008 Sylvia (Gaines)
 6545 To You (3-part)
 6797 When the Boys Come Home
 (3-part)

MEN'S VOICES

7155 Morning (Baldwin)
 6889 My Homeland (Gaines)
 7154 Star-Eyes (Baldwin)
 6890 Sylvia
 7251 To You (Baldwin)
 7009 The Vagabond (Gaines)
 7080 Were I King (Gaines)
 6499 When the Boys Come Home
 (Baritone Solo)