

Fall 10-8-1912

Maine Campus October 08 1912

Maine Campus Staff

Follow this and additional works at: <https://digitalcommons.library.umaine.edu/mainecampus>

Repository Citation

Staff, Maine Campus, "Maine Campus October 08 1912" (1912). *Maine Campus Archives*. 3509.
<https://digitalcommons.library.umaine.edu/mainecampus/3509>

This Other is brought to you for free and open access by DigitalCommons@UMaine. It has been accepted for inclusion in Maine Campus Archives by an authorized administrator of DigitalCommons@UMaine. For more information, please contact um.library.technical.services@maine.edu.

The Maine Campus

Vol. XIV

BANGOR, MAINE, OCTOBER 8, 1912

No. 2

MAINE TRIMS TUFTS

Medford Has a Strong Team

Maine defeated the strong team from Tufts College last Saturday, 14-0, but her victory was, by no means, an easy one. Tufts was represented by one of the strongest teams that that institution has produced for a long time and she proved a worthy opponent of the home team by the fine game that she played. The style of playing that the two teams presented was well contrasted, Maine keeping almost entirely to the old style of "line-bucking" and Tufts, with her various "shift formations," showing modern form. Maine made her first score after the first eight minutes of play, Bryant, receiving the ball on a punt,



CAPTAIN SHEPARD

placed the ball on Tuft's 25 yard line after a fine run of 70 yards. Carleton made fifteen yards, and then on a well executed forward pass, Bernheisel to Donahue, a touchdown was made. Only once during the game was Maine's goal threatened, this occurring in the first half when Tufts placed the ball on Maine's five yard line, after a brilliant run of 45 yards by Adams, but on the next play Tufts fumbled, Maine recovered the ball and Shepherd kicked it out of the danger zone.

Tufts started the game by kicking to Bernheisel who ran the ball back to Maine's 45 yard line. Shepherd made no gain. Maine penalized 15 yards for holding. Bryant made ten yards. Shepherd kicked to Wilson who ran the ball back to Tufts 30 yard line. Wilson made 20 yards on the next play, followed by a gain of three yards

by Hadley. Adams punted to Bryant who ran through the Tuft's line for 70 yards, being downed on their 25 yard line. Carlton made 15 yards through center and on the next play which called for a forward pass Maine made her first touchdown, Bernheisel, receiving the ball from Bryant, threw it to Donahue who was behind Tufts goal line.

Shepherd kicks an easy goal and on the kick off Adams runs it back to Tuft's 45 yard line. On a finely executed forward pass, Angel to Wilson, Tufts brought the ball to Maine's 35 yard line. Another forward pass was attempted but failed, Martin secured the ball and ran it back 15 yards. On the next play Maine was penalized five yards for hurdling. Shepherd punted and Wilson ran the ball back to Tuft's 40 yard line. In the next three plays Tufts carried the ball to Maine's 18 yard line. First quarter ended. Tufts was held for downs and Shepherd punted out of danger. Adams runs the ball back 35 yards. Angel makes 15 yards. Adams tried a drop-kick from the 28 yard line but failed by a narrow margin. Shepherd kicks to Wilson who places the ball on the 50 yard line. Adams on a delayed pass runs to Maine's five yard line. On the next play Tufts fumbles the ball and Maine recovers it. Shepherd kicks out of danger. Tufts secures the ball on Maine's 40 yard line and on the next play Adams punts 48 yards, the ball landing behind Maine's goal line. Maine lines up on her own 25 yard line and on the first play Shepherd makes 10 yards through center, Bryant carries the ball five yards further, Martin goes through line for five more. Maine is penalized 15 yards for holding. Shepherd punts. Tufts brings the ball up to the 50 yard line. On the next play she very nearly works a forward pass Bryant intercepting it and carries ball to Tufts' 35 yard line. On a forward pass, Bryant to Shepherd, Maine makes 15 yards. Shepherd makes five yards and then tried field goal. Lane broke through and blocked the attempt and recovers ball for Tufts. Adams punts to Bryant and on next play Shepherd kicks to Wilson who is downed on his own 30 yard line. First half ends here.

Shepherd kicks off to Adams who runs ball back to the 30 yard line. On the next play Maine gets the ball on a badly executed forward pass by Tufts. Bryant makes ten yards. Maine is penalized 15 yards for holding. A forward

pass is attempted but goes to Tufts. Angell makes 10 yards on next play. Tufts fumbles and loses the ball on her own 45 yard line. Martin carries the ball through center for 15 yards on three downs.

An attempted forward pass went to Wilson. Adams punted on the next play and Bryant brought ball to Maine's 20 yard line. Carleton makes 5 yards through center, Martin made 3 yards and Carleton made first down. Martin makes 4 more yards and Carleton broke through the line for 30 yards. Bryant followed with a five yard run and Martin made first down. The ball was on Tufts' 20 yard line. Martin makes 5 yards and Shepherd took the ball, on the next play, 15 yards for a touchdown. Bryant kicked the goal. Gulliver kicked to Adams who ran ball back to 20 yard line. Angell made 5 yards. Adams punted to Bryant and ball is brought back to Maine's 40 yard line. Carleton makes 5 yards. Maine fumbled and Tufts recovered ball. Hadley made 10 yards. Maine was penalized again for holding. Tufts lost to Maine on downs. Bryant made 7 yards. Maine was penalized. Shepherd punted to Adams, the ball being carried back to the 50 yard line. Tufts fumbled the ball on the next play but recovered it. Gulliver intercepted a forward pass and carried the ball to Tufts 30 yard line. On the next play there was no gain. Maine now attempted another forward pass but the ball was captured by Angell and carried to Tufts 40 yard line. Adams, on end run, made 15 yards and Angell made 5 yards more. A forward pass was tried on the next play but Shepherd intercepted it and fumbled but Sawyer recovered the ball. Bryant carries the ball through center for 15 yards. Martin fails to gain on next play and the half then ended.

MAINE	TUFTS
Donahue, le.....	le, Ellins
Murray, Ruffner, lt.....	lt, O'Donnell
Sawyer, lg.....	lg, Houston
Baker, c.....	c, Thorndike, Robbins
Gulliver, rg.....	rg, Lane
Bigelow, rt.....	rt, Tobin, Bednett
Bernheisel, Webster, re.....	re, Gaw, Donnelly
Bryant, q.....	q, Wilson
Carleton, Bird, Kruger, lh.....	lh, *Hadley, Sherburne
Martin, rh.....	rh, Angell
*Shepherd, Amadon, fb.....	fb, Aadamis

*Returned to game.

Touchdowns: Donahue and Shepherd. Goals from touchdowns, Shepherd, and Bryant. Referee, Tufts of Brown, Kilpatrick of Princeton. Time—12 minute periods.

A. K. Gardner, '10, was a recent visitor on the Campus.

BLANKET TAX

A New Project at the University

At the student Chapel exercises Tuesday, Oct. 1, the student body by a vote of 560 to 117 adopted the "blanket tax" which has been so successfully tried out at Wesleyan and other prominent eastern colleges.

The tax makes an assessment of \$11 a year upon the young men students and \$6 upon the young ladies. This measure as passed covers the subscription to the CAMPUS, admission to all athletic contests on Alumni Field, membership to the Athletic Association, funds for the band.

At the same time at which the tax was passed, the following resolution was carried: "A student not paying his or her assessment shall be debarred from all student activities, including class offices and contests, and his or her name shall be posted on the bulletin board."

While at present, it may be somewhat premature to forecast the success of the new scheme, if we view the matter from any standpoint it cannot help but work out better than the old methods of meeting the current expenses of the various college organizations in which all ought to have a common interest.

INTERESTING RELICS

Obtained Through an Alumnus

Through the efforts of Mr. H. P. Merrill, a graduate of the civil engineering department in the class of 1898, the University has come into possession of some very interesting photographs and relics of the sunken battleship Maine. Mr. Merrill has been engaged for some time as a government engineer in the work of raising the ill-fated vessel and the large photograph which he has sent and which now hangs in the office of Dean Boardman shows how the work of raising has progressed. Mr. Merrill was very anxious for the college to secure the name-plate of the Maine and in order to meet the law he suggested that a society be formed whose object should be to collect articles of historical interest. This suggestion was acted upon and application for the name plate was made through our Congressman. Instead of the name plate we have received a 6 inch shell and an air-port cover. These are soon to be placed in proper cases.

H. B. Fisher, '12, spent a few days on the Campus last week.

The
of hono
Council

1. T
by one
and any
Council

2. T
activiti
Student
quent
without

3. T
one acc
the stu
ginning
conflict

4. T
notify
all nom

The s
do the
look up
make a
In case
maximu
be eligi
the Cou

Editor in
Business
Manager
Manager
Manager
Manager
Capt. of
Capt. of
Capt. of
Capt. of
Pres. Ath
Mgr. Mus
Asst. Mg
Asst. Mg
Asst. Mg
Asst. Mg
Captain
Manager
Members
Members
Members
Members
Member
Members
Asst. Tre

HONOR POINT SYSTEM

Rules as Passed by the Student Body

The following is a resume of the rules and list of honor points as drawn up by the University Council:—

1. The maximum number of points carried by one student at one time shall not exceed 11, and any deviation shall be referred to the Student Council.

2. This system of the division of college activities shall be under the supervision of the Student Council, understanding that no subsequent changes shall be made by that body without the consent of the student body.

3. This schedule shall take the place of that one accepted in the spring semester of 1909 by the student body, shall go into effect at the beginning of the fall semester, 1911, and shall not conflict with any elections made prior to that time.

4. The presidents of the four classes shall notify the secretary of the Student Council of all nominations that count points.

The secretary of the Athletic Association shall do the same. The secretary of the Council shall look up the record of such nominees and shall make a report to the respective organizations. In case an election will carry a nominee over the maximum number of points allowed, he shall not be eligible for election except by permission of the Council.

Editor in Chief <i>Prism</i>	6
Business Manager <i>Prism</i>	8
Manager of Football (Full time as Mgr.).....	8
Manager of Track (Full time as Mgr.).....	8
Manager of Baseball (Full time as Mgr.).....	8
Manager of Basketball (Full time as Mgr.).....	8
Capt. of Football (during active season).....	6
Capt. of Track (during active season).....	6
Capt. of Baseball (during active season).....	6
Capt. of Basketball (during active season).....	6
Pres. Athletic Association.....	8
Mgr. Musical Clubs.....	8
Asst. Mgr. Football (rated time as captain plus 2 weeks).....	4
Asst. Mgr. Baseball (rated time as captain plus 2 weeks).....	4
Asst. Mgr. Track (rated time as captain plus 2 weeks).....	4
Asst. Mgr. Basketball (rated time as captain plus 2 weeks).....	4
Captain Tennis.....	6
Manager Tennis.....	3
Membership Football Team.....	5
Membership Baseball Team.....	5
Membership Track Team.....	5
Membership Basketball Team.....	4
Member Tennis Team.....	2
Membership Athletic Board.....	2
Asst. Treasurer Athletic Association.....	4

Leader Musical Clubs.....	5
Asst. Manager Musical Clubs.....	5
Membership Musical Clubs.....	1
Reader Musical Clubs.....	3
Leader of Band.....	3
Mgr. University Orchestra.....	1
Membership University Orchestra.....	3
<i>Prism</i> Artist.....	2
Associate Editor <i>Prism</i>	4
Asst. Business Manager <i>Prism</i>	2
Editor in Chief CAMPUS.....	7
Managing Editor CAMPUS.....	5
Business Manager CAMPUS.....	7
Asst. Business Mgr. CAMPUS.....	3
Associate Editor CAMPUS.....	1
Pres. Literary Association.....	1
Pres. Senior Class (counts 6 spring term).....	3
Treas. Senior Class.....	2
Pres. Junior Class (counts 6 spring term).....	3
Treas. Junior Class.....	2
Pres. Sophomore Class.....	3
Treas. Sophomore Class.....	1
Pres. Freshman Class.....	2
Treas. Freshman Class.....	1
Secretary Athletic Association and Athletic Board.....	5
Pres. of Professional Society.....	1
Pres. Y. M. C. A.....	2
Pres. Literati.....	1
Pres. Debating Club.....	1
Pres. Maine Masque.....	1
Membership Maine Masque.....	1
Manager Maine Masque.....	7
Asst. Manager Maine Masque.....	3
Treasurer Dramatic Club.....	1

DEBATING CLUB

Some Plans for Organization

A meeting was held last Thursday evening in Estabrooke Hall for the purpose of organizing a University Debating club.

Owing to the fact that the number present was rather limited, the organization of the Club was deferred until the next meeting, which is tonight at half past seven in Estabrooke Hall.

Plans for the coming year were made and the advisability of challenging some other college to a debate, was also discussed.

Prof. Daggett, who has been away on a year's leave of absence, was present and expressed himself as very optimistic for the success of the Club. He will act as coach both for the varsity and the class teams.

It is hoped that all those interested will be present tonight when the Club will be organized.

THE MAINE CAMPUS

Published Tuesday of each week during the college year by the University of Maine Students
117 Exchange St., Bangor, Me.

Editor-in-Chief

F. B. AMES, 1913

Managing Editors

P. W. MONOHON, 1914

W. D. TOWNER, 1914

Alumni Editor

J. C. WALLACE, 1913

Associate Editors

C. E. CHANDLER, 1913 A. B. FERGUSON, 1914

F. A. MORRIS, 1914 E. B. HARVEY, 1914

F. S. YOUNGS, 1914 C. MAGNUS, 1915

J. B. DAVIS, LAW, '12

Business Manager

H. M. WARDWELL, 1913

Assistant Business Manager

H. L. DINSMORE, 1914

Entered at Bangor, Maine, Post-Office as Second-Class Matter.

Terms: \$2.00 per year, on or before Nov. 1st; single copies 10 cents.

Business communications should be addressed to the Business Manager and news communications to W. D. TOWNER, Managing Editor.

BANGOR CO-OPERATIVE PRINTING COMPANY

EDITORIAL.

The student body, as a whole, deserves to be congratulated for the promptness with which it has grasped an opportunity to further the interests of the University. In the passage of the blanket tax a distinct forward step has been made in the support of the athletic and other interests of the college.

During the past three or four years there has been an increasing demand for championship athletic teams here at Maine. Under the systematic management of Prof. Wingard this demand has been met more and more, until last year we secured two of the three State championships.

As the teams have grown gradually better, more money has been needed to support them; but on the side of the student body there has not been the necessary response and increase in

support. As a result of this the financial condition of the Athletic Association has suffered materially.

Various remedies for this condition have lately been suggested, and the plan that to be most liable to succeed was that of inaugurating a blanket tax. By means of such a tax it was planned to distribute the support of activities among a larger number of students and decrease the individual cost. This plan was presented to the student body and met with immediate approval, thus showing that all fully appreciated the value of such a forward step.

But one thing now remains to make the change successful from every standpoint—each student must see to it that his own tax is paid. A committee of five, chosen by the Athletic Board, will make arrangements for the collection of the money, and that task should be made as easy as possible by the students themselves. By so doing our present athletic policy can be continued, our college paper and band can be supported and we can feel that the college activities are once more on a firm financial footing.

Some two years ago the student body ratified what was termed the "honor point system."

The honor point system was a plan whose purpose was to limit the number of college honors held by any one student. Each college honor was given a definite value and the plan provided that no student should hold offices whose value aggregated more than eleven points. The list of honors, with the value in points of each, appears elsewhere in this issue and is well worth study by all students.

There can be no doubt that those who first devised this system and the students who accepted it realized to the full the great value which it would have in regulating college honors. In order to secure the best results no man should carry more than one big honor; if he carries several he will, without doubt, neglect one or more to a certain extent, and this tends to lessen the efficiency of that organization which he neglects. If the honor point system is carefully

enforced a corner on honors will be prevented and all activities kept up to a high standard.

The great drawback to such a plan, valuable as it may be, is in the proper enforcement of it. Students are given a chance to secure honors and they accept, sometimes to their own detriment and that of others. Such ought not to be allowed and the student body, at this time, should support the enforcement of this honor point system. The more equal distribution of our college activities among the various students will serve to keep each up to a high standard of effectiveness.

On Thursday, Friday and Saturday of this week the Maine Music Festival will present its sixteenth season of concerts in Bangor. **Maine Music Festival** Realizing the real educational value of music the students of the University of Maine should attend some of these concerts in order to get, as they cannot fail to do, some of the benefits that such music can give. The appearance, this year on Thursday night, of Madame Nordica, the prima donna who opened the Festival sixteen years ago in Bangor, will add much interest to the concerts.

A call is issued for new men to work out for assistant managers of the various teams.

Saturday's game showed that the freshmen need to be reminded that their aid is expected in the cheering; also that caps are to be removed while the "Stein" song is being sung.

CLASS OFFICERS

Sophomores and Juniors Elect

At a class meeting held Monday, Sept. 30, the Junior Class elected officers as follows:—Pres., Paul W. Monohon; Vice Pres., Mark Pendleton; Secretary, Miss Estelle Beaupre; Treasurer, O. B. Higgins; Floor Director at Junior Prom, Arthur W. Abbott; Student Council, Russell S. Ferguson; Track Manager, Theodore W. Haskell;

Basketball Manager, George R. Rounds; Executive Committee, Harold Cobb, Mark Pendleton, Wayland D. Towner, Philip E. Philbrook; Prom Committee, Theodore T. Haskell, James R. Hudson, Harry R. Leavitt, George A. Rounds, Alexander O. Haggart; Junior Week Committee, Albert B. Ferguson, Philip W. Thomas, Harold V. Cobb, David Sturgis, Philip Philbrook.

On Friday, October 4, the Sophomores elected the following class officers: President, Norman S. Donahue; Vice President, Earle C. Goodwin; Secretary, Miss Mollie Hutchins; Treasurer, Robert Moore; Student Council, David S. Baker; Executive Committee, George H. Bernheisel, Joseph E. Doyle, William S. Milliken, Philip B. Sheridan; Class Football Mgr., Harold C. White; Class Track Mgr., Frank D. Freese; Class Basketball, Earle C. Goodwin.

FACULTY RULING

Regulations Concerning Social Affairs

All dances and social affairs participated in by men and women, and under the management of students of the University, shall be made subject to the approval of the Committee on Social Affairs, and shall occur only on Friday or Saturday evenings or on evenings preceding vacation, recesses or holidays, and shall in no case, except by prior arrangement with the Committee, extend beyond midnight.

Except in fraternity houses, under the charge of matrons, the names of chaperons for such functions shall be submitted to the Committee on the completion of the arrangements.

These regulations were announced in the spring of 1912, and went into effect at the opening of the fall semester of 1912.

Members of Faculty on Committee on Social Affairs—Professor J. H. Huddilston, Chairman; Professor Caroline Colvin, Professor Laura Comstock, Dr. Andrew P. Raggio, Professor E. R. Wingard.

The announcement of the intention to hold such functions must be submitted in writing to the committee at least two days before the event is to take place.

"The Story of Indiana" by Robert J. Aley, president of this University, and his son, Max Aley, has been published in the form of a three hundred page book.

P. I. Chase, '04, was a recent visitor at the Sigma Alpha Epsilon house.

TENNIS TOURNAMENT

Finals Yet to be Played

The results of the Fall Tennis Tournament are as follows:

1st Round. J. W. Gowen, '15, defeated C. P. Sherman.

Ferguson, '14, defeated J. D. Graves, '15, 3-6, 6-2, 6-3.

R. Cohoon, '16, defeated H. B. Richardson, '13.

R. L. Whitney, '14, defeated S. C. Clement, '16, 6-4, 6-3.

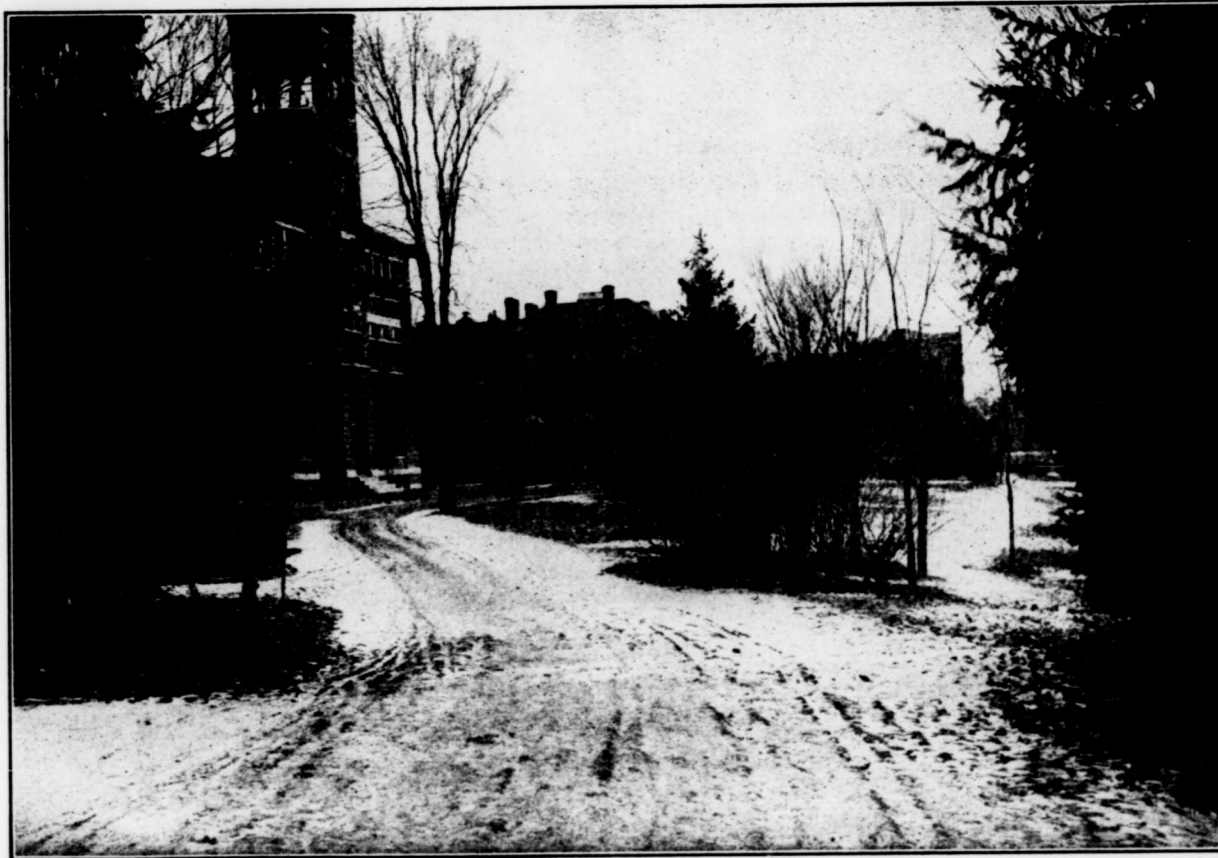
2nd Round. J. W. Gowen, '15, defeated R. Ferguson, '14, 6-0 6-4.

N. B. Woodbury, '15, defeated D. W. Parks, '16, default.

A. L. King, '14, defeated E. P. Ingalls, '15, 6-2, 6-2.

H. Currier, '16, defeated R. L. Whitney, '14, 6-0, 6-1.

Semi-Finals. J. W. Gowen defeated N. B. Woodbury, 6-4, 6-3.



D. W. Parks, '15, defeated F. J. Lewis, '14, 6-3, 7-5.

W. M. Morse, '14, defeated C. M. DeWitt, '1., 6-3, 6-0.

N. B. Woodbury, '15, defeated F. S. Youngs, '14, 6-3, 6-0.

E. P. Ingalls, '15, defeated A. B. Ferguson, default.

A. L. King, '14, defeated M. Packard, '16, 6-1, 6-0.

A. R. Mace, '15, defeated H. L. Dinsmore, '14, 6-3, 6-4.

H. Currier, '16, defeated K. Currier, '16, 6-2, 10-8.

A. L. King, '14, defeated H. Currier, 6-1, 6-4.

Finals will be played by J. W. Gowen, '15, and A. L. King, '14, during the week.

They will consist of the best three out of five sets.

Those who were on the Campus for the game Saturday, were Hosea Buck, '90, Chas. J. Sawyer, '98, Wm. McSawyer, '01, E. W. Russell, '09, Louis Smith, '09, Ralph T. Hopkins, '03, H. A. Emory, '06, G. R. Woodbury, '11, A. W. Patterson, ex-'12, Safford, '10, A. Osborne, '12, W. R. Ballou, '12, T. L. Darrell, '12, D. P. Wasbburn.

Ho
team

Ha
for B

Ma
cipal
comi

Ed
Lafa
of M
be m

Ed
'09, v
Cook
Jama
elect

Th
of Sk
of M
sole

Ca
ill wi
Orlea
soon

A.
elect
durin

ALUMNI NOTES

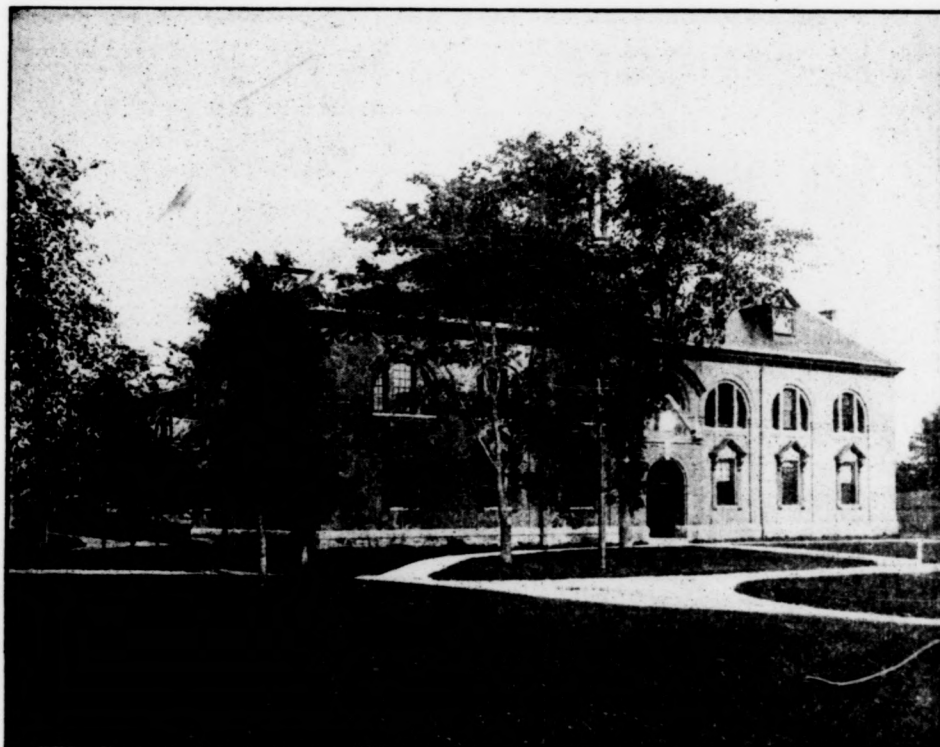
Hosea B. Buck, '93, accompanied the football team to Cambridge for the Harvard game.

Harry M. Smith, '93, of Bangor, is a candidate for Bank Examiner of the State of Maine.

Maurice B. Merrill, '01, has been elected principal of the Mattanawcook High School for the coming year.

Edward B. Davidson, College of Law, '08, of Lafayette Ind., and Miss Lear B. Friend, daughter of Mr. and Mrs. David Friend of Ellsworth are to be married on November 16.

Among those who attended the Dutch Luncheon held at the Copley Square Hotel after the Harvard-Maine game were: H. T. Haggard, '09, F. M. Claflin, '07, Fay T. Kinney, '10, R. E. Hobbs, '10, E. C. Palmer, '99, R. J. Smith, '11, H. P. Higgins, '09, R. O. Jackson, '12, P. R. Seemon, '07, A. C. Houghton, '11, E. O. Pray, '09, E. R. Morgan, '10, H. M. Ellis, '09, R. H. Boothby, ex-'14, Joseph Strong, ex-'14, S. F. Berry, '10, W. H. Mayo, '09, H. P. Sweetsir, '10, Hosea Buck, '90, H. I. Este, '09, J. P. King, '10, E. L. Fulsom, E. G. Spofford, '08, Harry Burden, '12, J. S. Sawyer, J. R. Murphy, '11, E. H. Maxcey, '11, E. J. Wilson, '07, S. P. Jones, '03,



Edward W. Bridgham, LL. B., College of Law, '09, was married last week to Miss Isaabelle Jane Cook, daughter of Mr. and Mrs. John Cook of Jamaica Plain, Mass. Mr. Bridgham was recently elected county attorney of Sagadahoc county.

The wedding of Enoch Markham, '00, formerly of Skowhegan and Miss Lillian Walker, daughter of Mr. and Mrs. C. W. Walker of Canton, will be solemnized early in October.

Carl B. Estabrooke, '12, who has been seriously ill with typhoid fever in a private hospital at New Orleans, La., is convalescing rapidly and will soon leave the hospital.

A. C. Goodnow, ex-'11, is in charge of the electric lighting on Huntington Ave, Boston, during the Boston Electrical Show.

W. A. Kimball, '09, F. L. Knowles, H. A. Sutton, '09,

◆ ◆ ◆

SKULL CUP

Another Fraternity Captures It

The Senior Skull Scholarship Cup which last year was held by Alpha Tau Omega fraternity is this year in the possession of the Phi Gamma Delta fraternity. Beta Theta Pi is the only other fraternity which has held this cup, which is to go for permanent possession to that fraternity that shall win it the greatest number of times in eleven years.

DEBATING CUP

Offered by the Soph. Owls

A new trophy in the University is the Sophomore Owl Cup for debating. This cup is offered each year to the winning class in interclass debate. It is to be kept in the library and engraved each year with the numerals of the winning team.

Prof. William E. Barrows, Jr., the new professor of electrical engineering, is the author of "Light and Illumination," just published. This

4.15 P. M. General Lecture Course, Library.
7.30 P. M. Agricultural Club Meeting, Winslow Hall.

THURSDAY, OCTOBER 10

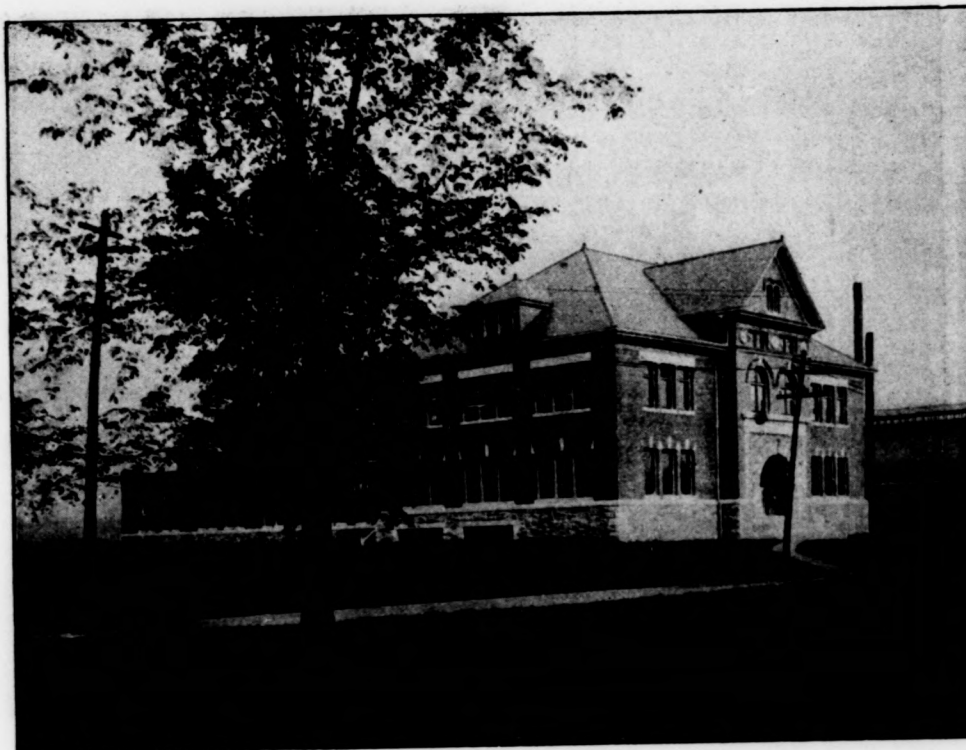
3.45 P. M. Football practice.
7.00 P. M. Band Rehearsal, Chapel.
7.30 P. M. Y. M. C. A. Meeting, Library.

FRIDAY, OCTOBER 11

3.45 P. M. Football practice.
7.30 P. M. Spectator Club Meeting.

SATURDAY, OCTOBER 12

3.00 P. M. Football Game, Maine vs. Rhode Island.



is a thoroughly revised and amplified edition of "Electric Illuminating Engineering" written by Prof. Barrows in 1908. The edition of the original work was entirely exhausted and is now out of print. It was recognized as the standard on the subject which it covered.

CALENDAR

TUESDAY, OCTOBER 8

7.00 P. M. University Debating Club, Estabrooke Hall.
3.45 P. M. Football practice.

WEDNESDAY, OCTOBER 9

3.45 P. M. Football practice.

MONDAY, OCTOBER 14

3.45 P. M. Football practice.
4.15 P. M. Pumpkin Meet, Alumni Field,
7.00 P. M. Fraternity Meetings.

STUDENT DIRECTORY

Athletic Association—President, G. G. Tilley; Secretary, W. D. Towner.

Football—Captain, T. D. Shepard; Manager, J. C. Wallace.

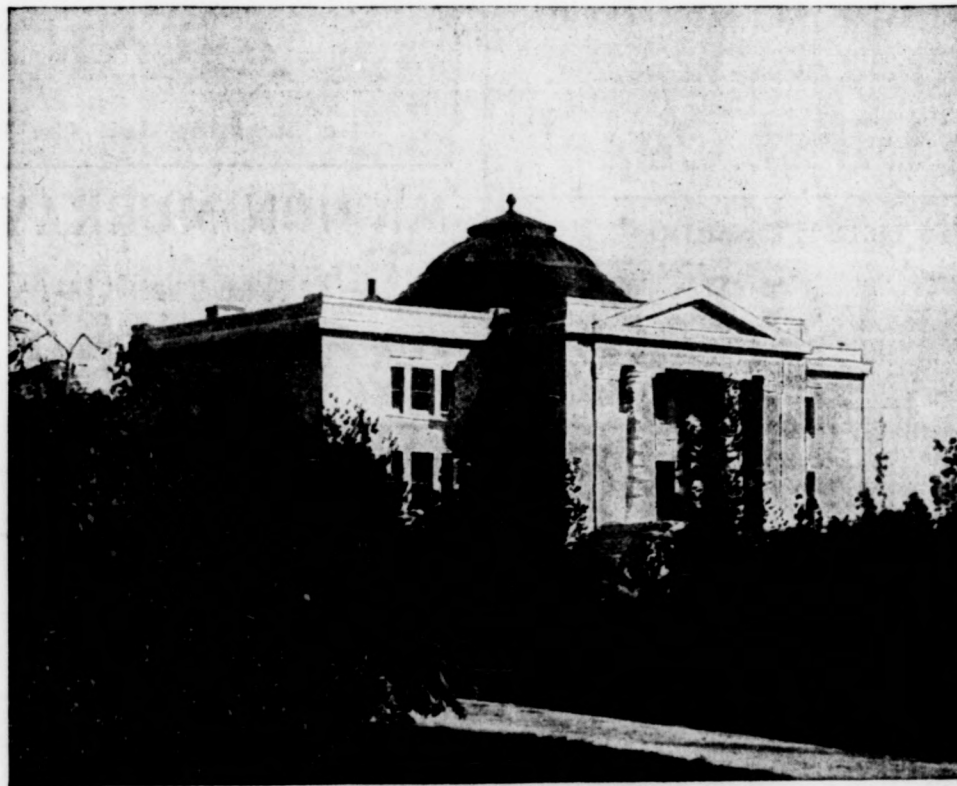
Baseball—Captain, resigned; Manager, B. B. Anthony.

Track Athletics—Captain, R. A. Power; Manager, H. P. Adams.

Tennis
Manag
Glee C
Mando
Banjo
Band-
THE M
Manager
The P
N. P. Ma
Maine
Manager
Senior
Junior
E. J. Be

Tennis—Captain, M. C. Bird; Manager, C. E. Chandler.
Manager of Musical Clubs—G. C. Clark.
Glee Club—Leader, W. G. Brewer.
Mandolin Club—Leader, P. W. Thomas.
Banjo Club—Leader, W. C. White.
Band—Leader, Park Elliott; Manager, E. P. Ackley.
THE MAINE CAMPUS—Editor, F. B. Ames; Business
Manager, H. M. Wardwell.
The Prism—Editor, W. D. Towner; Business Manager,
N. P. Makanna.
Maine Law Review—Editor, E. L. Goodspeed; Business
Manager, M. W. Epstein.
Senior Class—unelected.
Junior Class—President, P. M. Monohon; Secretary,
E. J. Beaupre.

Sophomore Class—President, N. S. Donohue; Secretary,
Miss Mollie Hutchins.
Freshman Class—Temporary President, H. D. O'Neil.
Y. M. C. A.—Acting President, Raymond Floyd;
Secretary, P. E. Jackman.
Y. W. C. A.—President, Antoinette Webb; Secretary,
Alice Poore.
Society of Civil Engineering—President, A. F. McAlary.
Agricultural Club—President, W. M. Morse; Secretary,
G. N. Worden.
Forestry Club—President, W. D. Towner.
Deutscher Verein—President Raymond Floyd; Sec-
retary and Treasurer, Anna Perkins.



ALWAYS SOMETHING NEW and ALWAYS SOMETHING
SUPREMELY GOOD AT

THE BIJOU

Most Beautiful, Comfortable and Sanitary Theatre in Maine

WEEK OF OCTOBER 7

Big Festival Week Bill of Musicians, Singers, Dancers, Sketch Artists, Tale Tellers and Acrobats

TWO NEW SHOWS EVERY WEEK

Monday, Tuesday, Wednesday

JULIA NASH & COMPANY

In the Clever Comedy Playlet

"Her First Case"

The Noted Violinist

GEIGER

"In The Streets of Italy"

The Dancing Willettes

Tempting Terpsichorean Tittilations

Thursday, Friday, Saturday

A Novelty from the Orient

ASAKI

The Juggling Jap On Rollers

MARION MURRAY & CO.

In Bozeman Bulger's Latest Success

"A BIG BLUFF"

CONNERY & LEGAULT

Classy Singers and Dancers

Most Extraordinary Athletic Feature Ever Shown Here

THE FOUR LUKENS

Greatest Gymnasts on the Double Horizontal Bars in the Whole World of Vaudeville

The World's Best PHOTO PLAYS and Fine Concert ORCHESTRA

Altho
treacher
night be
of 18-0
Rhode I
entirely
footing a
on strai
minutes
ing durin
the ball
gains, th
stopped
and bega
time on
her who
constant

Rhode
the ball
and lost
Island w
to Bryan
line. Or
and ther
15 yard
her best
Maine's
punted b
the ball
5 yards
through
5 yards
quarter e

The se
possession
line. Ma
line. Rh
vard line
for Maine
home tea
bucking,
making t
a goal. I
line. Car
made 18
made 6 y
the 50 ya