

The University of Maine

DigitalCommons@UMaine

---

Vocal Popular Sheet Music Collection

Public domain (may be downloaded in full)

---

1899

## The One I Loved On South Carolina Shore : Tenor And Baritone

Wm. B Fairchild

*Composer*

Angie L Fairchild

*Lyricist*

Follow this and additional works at: <https://digitalcommons.library.umaine.edu/mmb-vp>

---

### Recommended Citation

Fairchild, Wm. B and Fairchild, Angie L, "The One I Loved On South Carolina Shore : Tenor And Baritone" (1899). *Vocal Popular Sheet Music Collection*. Score 3486.

<https://digitalcommons.library.umaine.edu/mmb-vp/3486>

This Book is brought to you for free and open access by DigitalCommons@UMaine. It has been accepted for inclusion in Vocal Popular Sheet Music Collection by an authorized administrator of DigitalCommons@UMaine. For more information, please contact [um.library.technical.services@maine.edu](mailto:um.library.technical.services@maine.edu).

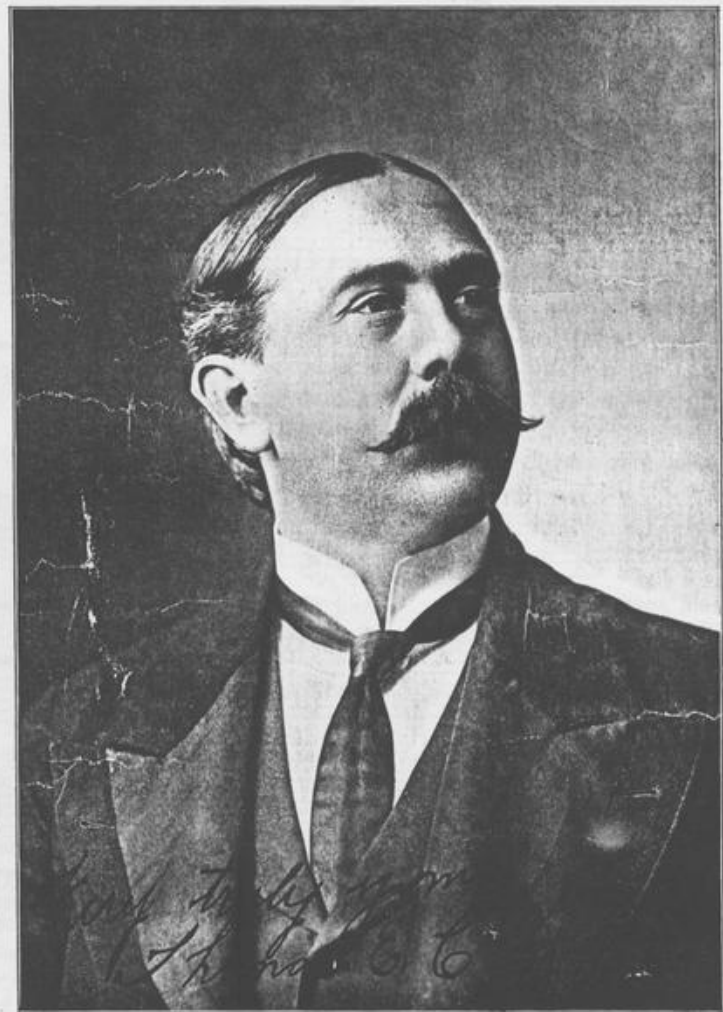
*The Letter Came Too Late*

# THE ONE I LOVED ON SOUTH CAROLINA SHORE

*One of the best  
Southern Ballads  
Ever Written*

Pr. 50 cts.

Sung by



Music by

Wm. B. Fairchild

Composer of

"The letter came too late"  
"Those bells they must not chime"  
"Forget-me-not" &c. &c.

*All Rights Reserved*

ORIGINAL  
ON  
DISPLAY  
"STATES"

London Eng

Wm. Sheard & Co.

Vp. 011701

1899

DNE

PUBLISHED BY  
FAIRCHILD MUSIC CO. CHELSEA MASS. U.S.A.

A. H. GOETTING,  
GENERAL SELLING AGENTS,  
SPRINGFIELD, MASS.

Toronto Canada  
Whaley Boyce & Co

BEST PIANO TUNING IN  
BANGOR AT HUGHES & SONS  
FOR \$1.50. TWO TUNERS  
BUSY ALL THE TIME.

3

# THE ONE I LOVED ON SOUTH CAROLINA SHORE.

TENOR AND BARITONE (Ad. Lib.)

Words by  
ANGIE L. FAIRCHILD.



Music by  
Wm. B. FAIRCHILD.

Moderato con espress.

PIANO.

*mf* *legato.*

*Piano carries the Melody,  
Small notes for Tenor.*

1. In my dreams I'm ev - er roam - ing Thro' the wood - land in the gloam - ing Far a -  
2. Now from out the past in dreaming I can see dear fa - ces beam - ing As the

*p*

way beneath the dear old south - ern sky ——— And I'm liv - ing life all ov - er As I  
children they were playing round the door ——— I can hear sweet voices calling When the

\* Copyright M D C C C X C I X by Fairchild Music Co. Chelsea Mass U.S.A.

\* International Copyright secured

\* All rights reserved

\* Any good singer can have permission to use this song in public

\* Illustrators can obtain elegant slides for this song from the Publishers.

Edison Phonograph Records of this song supplied by  
Murray, Blanchard & Young 185 Tremont St. Boston Mass.

Single Copy  
Make photo Copy

4 *rit.* *a tempo accel.*

wan-der 'mid the clov-er With the one I loved so well in days gone by ———— Once a-  
 evening shades are fall-ing, But their mother dear will an-swer them no more ———— In a

*rit.* *a tempo accel.*

gain I go to meet her And with lov-ing arms I greet her By the  
 grave down by the mead-ow Where the pine trees cast a shad-ow Sleeps the

brook beneath the pine trees welcome shade ———— And my heart is ev-er yearning Tho' its  
 one I long for day by day in vain ———— I am sad each night and morning And they

*a tempo.* *a tempo.*

all be-yond re-turn-ing But the mem'-ry sweet can nev-er nev-er fade ————  
 all seem long in dawning I would give my life to see her once a-gain ————

The one I loved &c. "Forget Me Not!" A coming song "Hit". Same Authors.

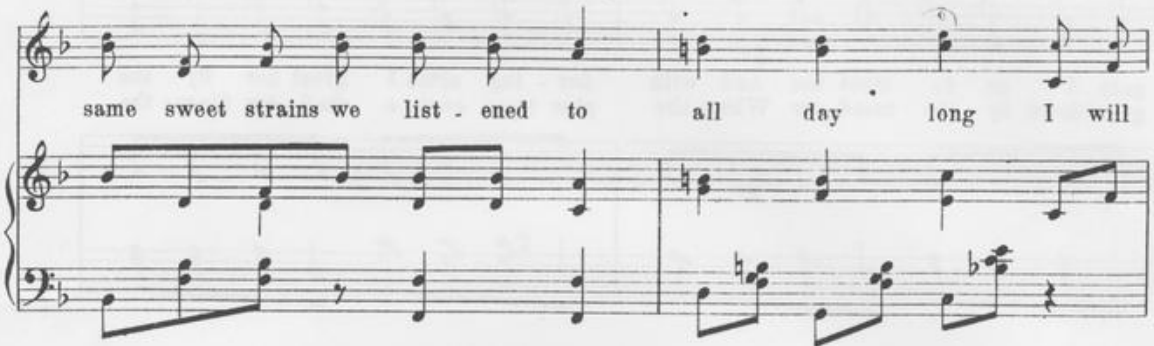
Bagaduce Music  
 Lending Library  
 Blue Hill, Maine  
 Donor: 0

Refrain.

The same old brook is run-ning with its mu - sic and its song The

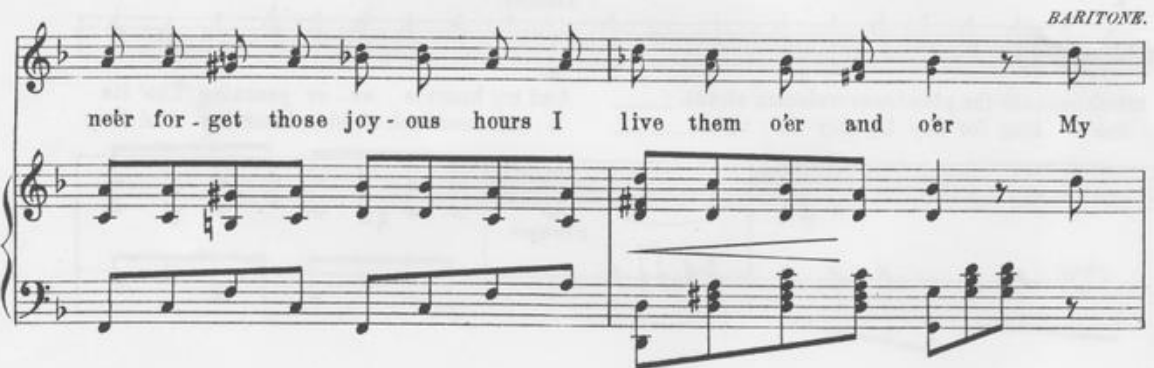


same sweet strains we list - ened to all day long I will



near for - get those joy - ous hours I live them o'er and o'er My

*BARITONE.*



heart lies there with the one I loved on South Car-olin shore.

*BOTH. rit.*

