

The University of Maine

DigitalCommons@UMaine

Vocal Popular Sheet Music Collection

Public domain (may be downloaded in full)

1912

Song Of The Chimes : Cradle Song

Lola Carrier Worrell

Composer

Follow this and additional works at: <https://digitalcommons.library.umaine.edu/mmb-vp>

Recommended Citation

Worrell, Lola Carrier, "Song Of The Chimes : Cradle Song" (1912). *Vocal Popular Sheet Music Collection*. Score 3310.

<https://digitalcommons.library.umaine.edu/mmb-vp/3310>

This Book is brought to you for free and open access by DigitalCommons@UMaine. It has been accepted for inclusion in Vocal Popular Sheet Music Collection by an authorized administrator of DigitalCommons@UMaine. For more information, please contact um.library.technical.services@maine.edu.



Songs by Lola Carrier Worrell

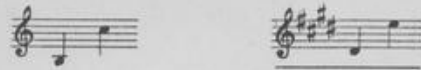
It is June. B ^b (d-F). C (E-g)	.50
<u>Song of the Chimes (Cradle Song).</u> C (b-C). E (d-E)	.50
Cloris Sleeping (Old English). B ^b (a-D). C (b-E). G (E-g)	.50
Mistress Mine. E ^b (b-F). F (c-g)	.50
Who Knows? F minor (d-F). G minor (E-g)	.50
In a Garden. E (c-E). F (d-F). G (E-g)	.50
Waiting. E ^b (b-E). F (c-F). G (d-g)	.50
Eternal Love. B ^b minor (b-D). C minor (cE). D minor (d-F)	.50
Over the Sea my Laddie Sailed. F (a-D) B ^b (d-g)	.50
Absence. C (c-D). E (E-F)	.50
An Autumn Bacchanal. E ^b (c-E). G (E-g)	.50
An Autumn Reverie. D minor (a-E). F minor (c-g)	.50
The Pine Tree. (Der Fichtenbaum). C minor (b-D). E ^b minor (d-F)	.50
Recompense (Hohe Liebe). D ^b (F-F). E ^b (G-g)	.50



WHITE-SMITH MUSIC PUBLISHING CO
BOSTON - NEW YORK - CHICAGO

Vp. 011343
1912
SONG

SONG OF THE CHIMES (CRADLE SONG)



Words and Music by
LOLA CARRIER WORRELL

VOICE $\text{♩} = 42$

PIANO *mf*

La * La * La *

p

Twi - light falls and night draws near

p

La * La * La * La * La * La * La *

mf

So we'll rock - a - by, ba - by dear, Nest - le close on

La * La * La * La * La * La *

Copyright, 1912, by White-Smith Music Publishing Co.

International Copyright Secured

14187-3

Bagaduce Music
Lending Library
Blue Hill, Maine
Donor: 677

moth - er's arm, She will shield thee safe from

Ca. * *Ca.* * *Ca.* * *Ca.* *

p

harm, Lul - la - by, lul - la - by,

Ca. * *Ca.* * *Ca.* * *Ca.* *

p very slight ritard *a tempo*

Sleep, my ba - by, sleep.

pp *a tempo pp* *p*

Ca. * *Ca.* * *Ca.* * *Ca.* *

p

Ca. * *Ca.* *

mf *p tenderly*

Long a - go, a moth - er mild — Held just so — her

Rca. * Rca. * Rca. *

mf

lit - tle child. Now the bells — ring out good cheer

Rca. * Rca. * Rca. *

p

Tell - ing of — that ba - by deer. Lul - la - by,

Rca. * Rca. * Rca. * Rca. * Rca. * Rca. *

rit. *Slowly*

lul - la - by, Sleep, my lit - tle one, sleep.

rit. *Slowly* *pp very slow* *ppp*

Rca. * Rca. * Rca. * Rca. * Rca. *

MISTRESS MINE

Words from Twelfth Night
SHAKESPEARE

LOLA CARRIER WORRELL

♩ = 120 Waltz tempo

lightly
O Mis - tress mine where are you roam - ing? O stay and hear
your true love's com - ing That can sing both high and low.

Copyright MCMVII by Lola Carrier Worrell

IN A GARDEN

DOUGLAS HEMINGWAY

LOLA CARRIER WORRELL

Presto

very bright and lightly
very brightly
I know a nook of trell - ised blooms
Where from the vine - clad ar - bor's gloms,

Pat. and notes under otherwise indicated

Copyright MCMVII by Lola Carrier Worrell

CLORIS SLEEPING

OLD ENGLISH

ERNEST DeLACY PIERSON

LOLA CARRIER WORRELL

♩ = 68 Delicately

p
When Clo - ris sleeps, on tip - toes al - lo ye spar - rows walk, ye cur - lews call, in
p *una corda*
rit. *a tempo*
whis - pers, lest their notes should break up - in her dreams, When Clo - ris sleeps —
pp *rit.* *a tempo*
Ye mag - pies, make no chat - ter on ye or - chard walls Ye
mf *una corda*

Copyright MCMVII by Lola Carrier Worrell

Dedicated to and sung by Lucille Stearns

IT IS JUNE!

GERTRUDE ROGERS

LOLA CARRIER WORRELL

Very fast and with much animation
It is June! All the sing - ing
slight ritard. *trump.*

Copyright 1910 by Lola Carrier Worrell
International Copyright