

The University of Maine

DigitalCommons@UMaine

Vocal Popular Sheet Music Collection

Public domain (may be downloaded in full)

1912

Ship Of My Dreams

Alfred Solman

Composer

Arthur J Lamb

Lyricist

Follow this and additional works at: <https://digitalcommons.library.umaine.edu/mmb-vp>

Recommended Citation

Solman, Alfred and Lamb, Arthur J, "Ship Of My Dreams" (1912). *Vocal Popular Sheet Music Collection*. Score 3302.

<https://digitalcommons.library.umaine.edu/mmb-vp/3302>

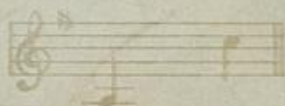
This Book is brought to you for free and open access by DigitalCommons@UMaine. It has been accepted for inclusion in Vocal Popular Sheet Music Collection by an authorized administrator of DigitalCommons@UMaine. For more information, please contact um.library.technical.services@maine.edu.

BY THE COMPOSER OF THE FAMOUS BALLAD "NINE"

R. J. P. Seavey

SHIP OF MY DREAMS

BASS or CONTRALTO in G.



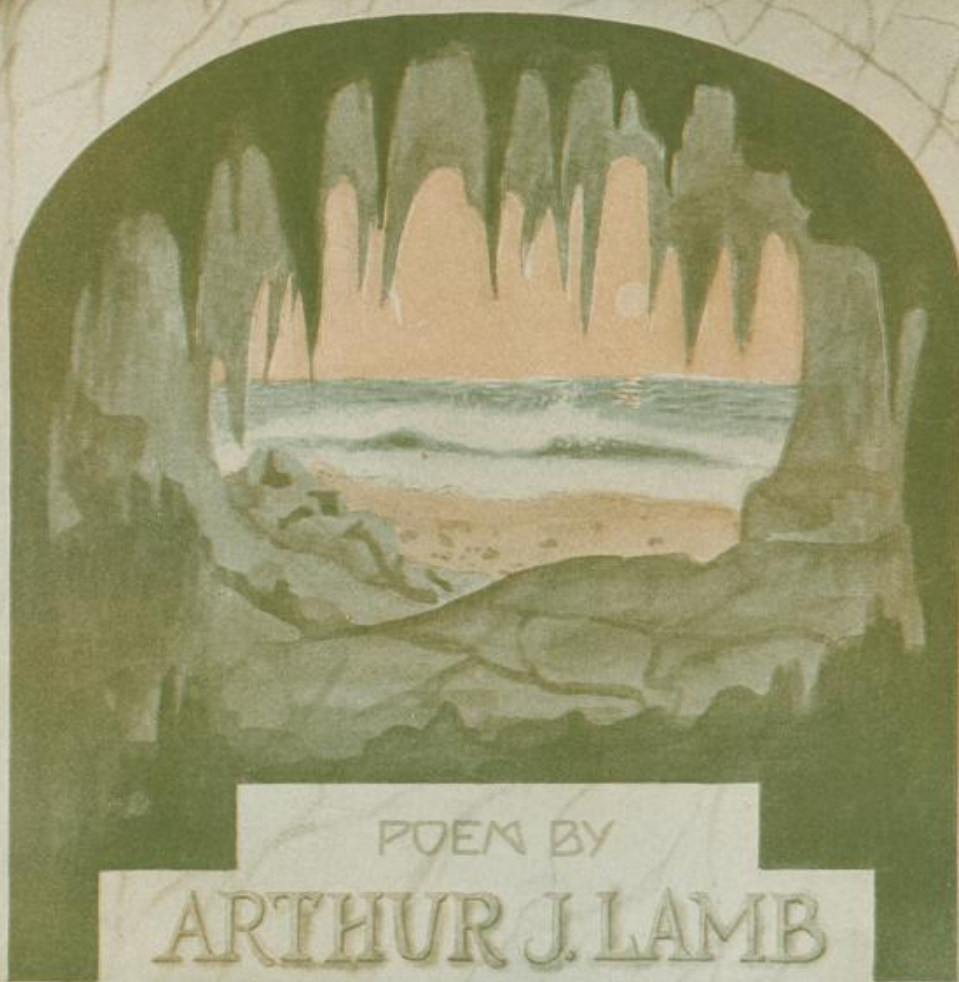
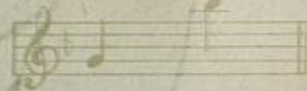
BARITONE or ALTO in B \flat



HIGH BAR. or MEZZO SOPRANO



TENOR or SOPRANO in F.



POEM BY
ARTHUR J. LAMB

MUSIC BY

ALFRED SOLMAN ⁵

Vp. 11320

1912

SHIP

1137 ST. THE JOE MORRIS MUSIC CO. NEW YORK

Respectfully inscribed to Miss Irene Hunt, New York City.

SHIP OF MY DREAMS.

MEZZO-SOP. or HIGH BAR. in D.

Words by
ARTHUR J. LAMB.

Music by
ALFRED SOLMAN.
Composer of "MINE"

Moderato.

f *mf*

A - gain I ling - er by the sad sea - shore, Where
My ship of dreams is filled with thoughts of you, For

p

il Basso ben marcato

last we said good - bye; ——— A - gain I'm dream - ing of the
true love ne'er for - gets; ——— My ship of dreams is filled with

Copyright 1912 by The Joe Morris Music Co. 130 W. 37th Street, New York.

The Publishers reserve the rights to the use of this Music or Melody for Mechanical Instruments.

International Copyright secured.

All rights reserved.

Albert & Sons, Australian Agents, Sidney.

days of yore And love that can - not die. A -
long - ings too, For true love still re - grets. Re -

gain I watch the state - ly ves - sels glide A -
grets that you and I should ev - er part, And

cross the silv' - ry spray, But where's the ship of which I
yet at times it seems, That you and I have al - ways

pp dolce *cresc. e accelerando*

dream at night, Why does it stay so long a - way?
been, sweet-heart, To - geth - er on my ship of dreams!

ff *f* *p* *a tempo, Lento*

REFRAIN.
Valse lente. With a broad swing.

Bring back the one I love, Ship

mf *molto espressivo*

of my dreams Speed home a -

mf *cresc.*

cross the foam, Where star - light gleams!

f *mf*

My heart by night and day

dolce

So wea - ry seems Bring

cresc. *cresc.*

back the one I love, Ship of my

p

dreams, Bring back the one I

f *ff*

love, Ship of my dreams!

Lento

It is needless to comment on the success of Alfred Solman's "IF I HAD A THOUSAND LIVES TO LIVE," but many more friends than the above song has won, are acclaiming the spontaneous triumph of the same composer's most recent composition—a ballad of the heart—entitled, "MINE." As simple as its title, yet most effective for the singer, the song "MINE" is a distinctive feature wherever performed, and is destined to become a favorite with every music lover.

MINE

Refrain

Music by
ALFRED SOLMAN

Animato

Mine when the dawn is break - ing Mine in my dreams at
 night, Mine when the birds are
 wak - ing, Mine when the stars are
 bright; Mine while the years are fly - ing,

f a tempo
il Basso marcato
ritard
cresc. al
a tempo
animato
ff
mf
f
mf

Copyright 1911 by Carl Lamme Music Co.
 International Copyright Secured.
 Copyright transferred to Joe Morris Music Co. 1913.

"MINE" IS PUBLISHED IN 4 KEYS.

"MINE" IS FOR SALE, WHEREVER MUSIC IS SOLD.

PUBLISHED BY

JOE MORRIS MUSIC CO.,
 130 WEST 37TH ST., NEW YORK CITY.