

The University of Maine

DigitalCommons@UMaine

Vocal Popular Sheet Music Collection

Public domain (may be downloaded in full)

1921

In The Heart Of The Lehigh Valley

William C Polla

Composer

Phil Ponce

Lyricist

Follow this and additional works at: <https://digitalcommons.library.umaine.edu/mmb-vp>

Recommended Citation

Polla, William C and Ponce, Phil, "In The Heart Of The Lehigh Valley" (1921). *Vocal Popular Sheet Music Collection*. Score 3253.

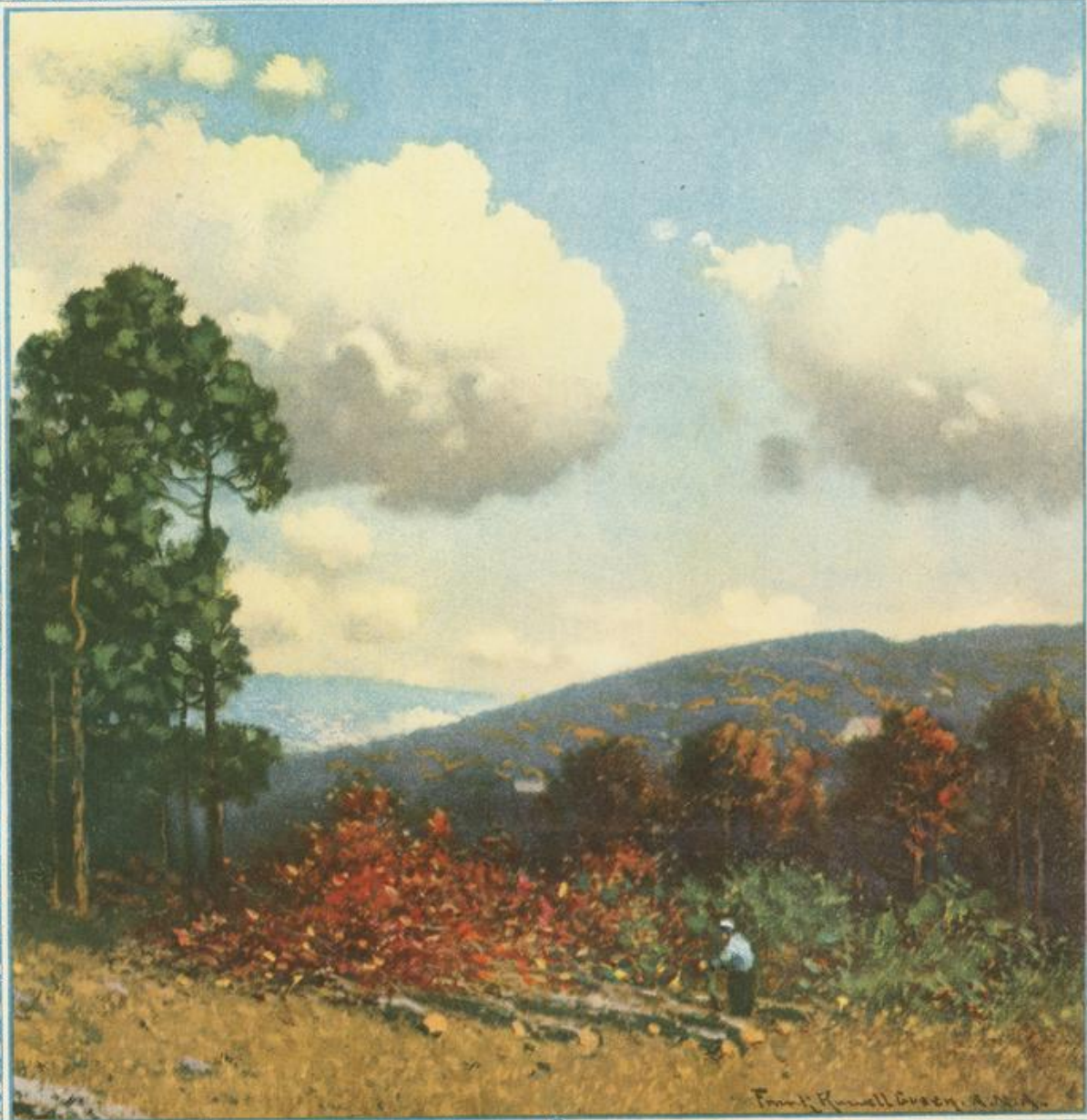
<https://digitalcommons.library.umaine.edu/mmb-vp/3253>

This Book is brought to you for free and open access by DigitalCommons@UMaine. It has been accepted for inclusion in Vocal Popular Sheet Music Collection by an authorized administrator of DigitalCommons@UMaine. For more information, please contact um.library.technical.services@maine.edu.

IN THE HEART OF THE LEHIGH VALLEY

WORDS BY PHIL PONCE

MUSIC BY WILLIAM POLLA



Vp. 011172
1921
In The

C. C. CHURCH AND COMPANY, HARTFORD, CONN., U. S. A.

HARTFORD NEW YORK LONDON PARIS SYDNEY

THE AMAPP CO., INC., N. Y.

In The Heart Of The Lehigh Valley

Words by
PHIL PONCE

Music by
WILLIAM POLLA

Moderato

Piano

f

Musical notation for the piano introduction, consisting of two staves (treble and bass clef) in a 3/4 time signature. The key signature has two flats (B-flat and E-flat). The music begins with a treble clef staff playing a melody and a bass clef staff providing harmonic support. Dynamics include a forte (*f*) marking and a hairpin crescendo.

There's a light shin-ing bright in a
Where the birds in the trees sing their

Musical notation for the first line of the song. It includes a vocal line with lyrics and a piano accompaniment. The piano part features a treble and bass clef staff with chords and a melodic line. Dynamics include *mp* and *p*.

Musical notation for the piano accompaniment corresponding to the first line of lyrics. It consists of two staves (treble and bass clef) with chords and a melodic line. Dynamics include *mp* and *p*.

win - dow to - night Of a cot - tage far a -
sweet mel - o - dies In the or - chard down the

Musical notation for the second line of the song. It includes a vocal line with lyrics and a piano accompaniment. The piano part features a treble and bass clef staff with chords and a melodic line.

Musical notation for the piano accompaniment corresponding to the second line of lyrics. It consists of two staves (treble and bass clef) with chords and a melodic line.

Copyright MCMXXI by C. C. Church & Co., Hartford, Conn., U.S.A.
 International Copyright Secured
 Sole Australian Agents, Nicholson & Co.
 Sole Agent for France, Oscar Osso, 125 Faubourg

UP 1921
011172
In

Bagaduce Music
Lending Library
Blue Hill, Maine
Donor: 0

way ————— There's a girl sit - ting there in an
lane ————— I will nev - er for - get it was

old rock - ing chair, Where she waits for me each day. ———
there that we met, And I must re - turn a - gain. ———

Chorus

In the heart of the Le - high Val - ley, Mid the

Penn - syl va - nia hills ————— Though far a way ————— Each

night and day — I seem to hear my sweet-heart say, — I am

long-ing for your — re - turn, — Till the day when you do — I will

yearn, — In the heart of the Le - high Val - ley There's a

heart still beats for me. — In the me. —

THE 2 BIGGEST HITS OF THE SEASON

DRIFTING

Words by
ARTHUR J. LAMB

Music by
WILLIAM POLLA

Drift - ing, drift - ing, down life's stream
Red lips smile while bright eyes beam.

mf *3*

The musical score for 'Drifting' consists of two systems. Each system has a vocal line on a single treble clef staff and a piano accompaniment on a grand staff (treble and bass clefs). The first system covers the lyrics 'Drift - ing, drift - ing, down life's stream'. The second system covers 'Red lips smile while bright eyes beam.'. The piano accompaniment features a steady eighth-note pattern in the right hand and block chords in the left hand. A dynamic marking of *mf* and a triplet of eighth notes are indicated at the start of the piano part in the first system.

Copyright MCMXX by C. C. Church & Co., Hartford, Conn., U. S. A.
International Copyright Secured All Rights Reserved

MY SWEETIE KNOWS

Words by
PHIL PONCE

Music by
EARNEST GOLDEN

Chorus

My sweet - ie knows — what makes me hap py, — Be - lieve me My sweet - ie knows —
— what makes me glad — Say he's got a way — of get - tin'

p-f

The musical score for 'My Sweetie Knows' is divided into two systems. The first system is labeled 'Chorus' and contains the lyrics 'My sweet - ie knows — what makes me hap py, — Be - lieve me My sweet - ie knows —'. The second system contains the lyrics '— what makes me glad — Say he's got a way — of get - tin''. The score is written for voice and piano. The vocal line is on a single treble clef staff, and the piano accompaniment is on a grand staff. The piano part begins with a dynamic marking of *p-f* and features a rhythmic accompaniment of eighth notes in the right hand and chords in the left hand.

Copyright MCMXX by C. C. Church & Co., Hartford, Conn., U. S. A.
All Rights Reserved Sole Australian Agents, Nicholson & Co., Ltd., Sydney International Copyright Secured
Sole Agent for France, Oscar Osso, 125 Faubourg Poissonniere, Paris