

Spring 2-16-1939

Maine Campus February 16 1939

Maine Campus Staff

Follow this and additional works at: <https://digitalcommons.library.umaine.edu/mainecampus>

Repository Citation

Staff, Maine Campus, "Maine Campus February 16 1939" (1939). *Maine Campus Archives*. 3105.
<https://digitalcommons.library.umaine.edu/mainecampus/3105>

This Other is brought to you for free and open access by DigitalCommons@UMaine. It has been accepted for inclusion in Maine Campus Archives by an authorized administrator of DigitalCommons@UMaine. For more information, please contact um.library.technical.services@maine.edu.

FINAL PLANS ANNOUNCED FOR INTRAMURAL WINTER CARNIVAL

Black Bears Wallop Bobcat Quintet 50-31

Victory Clinches at Least Share In State Series Title For Maine Team

BOURGOIN HIGH SCORER OF GAME

Maine Never Relinquishes First Half Lead;
Outplay Bobcats in Rough Contest;
Drew Scores 12 Points

By Erwin E. Cooper
Campus Sports Editor

The University of Maine Basketball team assured itself of no worse than a tie for the championship in the State Series by defeating the Bates Varsity 50-31 in a game played in Memorial Gymnasium last night. It was the Black Bears' second victory of the season over Bates.

The game was slowed up frequently by whistles, and some of the less noticeable infractions were called while more of the obvious ones went unnoticed.

Both teams had difficulty in finding the range during the first half, and although Maine jumped out to a 3-0 lead on a foul shot by Wilson and a basket by Arbor, Gorman and Woodbury sent the Bates team ahead a few minutes later when Gorman shot two baskets and Woodbury contributed a basket and a foul shot.

The score was 7-3 at this point, but Curtis made a foul shot good, and Bourgoine and Drew a basket each, and Maine led 8-7. From here on, the Maine team began to pick up speed so that by the end of the first half the Pale Blue had amassed 26 points to the Bobcats 16.

Curtis Improved

Bates fought desperately during the second half, but poor shooting made it impossible for the Garnet to catch up with the Black Bears who, although they were not playing their best basketball of the year, piled up 50 points while Bates was clearly out of the running as the game entered the final stages. Coach Harold Woodbury substituted frequently during the final stages of the game, but the Bobcats found it just as difficult to score against the Maine substitutes.

Bourgoine, with 13 points, was high scorer of the game, but Dana Drew, who was acting captain in last night's fray, was right behind with 12 points. Curtis gave his best performance so far this season, and although he missed easy shots on one or two occasions, his play off the backboard was better than at any time this season. Woodbury and Kenney, with 9 points and 8 points respectively, were the Garnet's outstanding threats.

Freshman Game

Parker Small's deadly right-hand shots, Crowley's sterling offensive and defensive play, and teamwork finer than any shown by the frosh this season gave the yearling quintet a well-

(Continued on Page Three)

Edna Adams To Play Lead

Other Parts Announced For Masque Play, Helen of Troy

By Alma Hansen

Edna Adams will play the feminine lead in the Masque production of *Helen of Troy* March 8, 9, and 10, it was announced by Herschel Bricker, director of the Masque. Maynard French, a freshman, will play the leading male role, Prince Paris.

There are forty-two members in the cast. Other principal parts are Louis Thibodeau as Thersites, Queen Helen's fool; George Risman as King Menelaus of Sparta; Frederick Libby, as King Priam of Troy; George Schmidt as Achilles; John Robie as Prince Hector; and Barbara Welch as Cassandra.

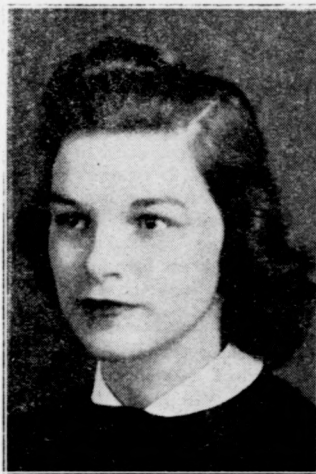
This is the first appearance of Miss Adams in the Masque. She has had three years private training in voice. French, who will play the role of Prince Paris, took the part of Randall in *Heartbreak House*.

Louis Thibodeau is a member of the Masque with considerable experience. He took the part of Red Ike in the Masque production of *Roadside* last December, and a year ago, he played the part of Truffaldino, the servant, in *The Servant of Two Masters*. He has also played in the Masque productions of *Abraham Lincoln* and *Berkeley Square*, and was music director of *Johnny Johnson*.

George Risman, who will play King Menelaus, has also had experience in the Masque, having played in *First Lady*, *Johnny Johnson*, and *The Servant of Two Masters*. Fred Libby, a transfer from M.I.T. to Maine, played the part of Captain Shotover in the Masque production of *Heartbreak House* last November.

George Schmidt and John Robie, (Continued on Page Four)

Queen and Candidates for Throne



ANNA VERRILL



ELIZABETH LUCE



HELEN WORMWOOD



MARION FITZGERALD



EUNICE GALE

Keyes Places First In Prize Contest

Allston P. Keyes, '40, won first place and a prize of \$25 in the Oak Prize Speaking contest held Monday afternoon in South Stevens. His subject was "Why the Railroads Are Bankrupt."

George Ellis, '41, and John Perry, '39, were second and third, respectively, winning prizes of \$10 and \$5. Ellis's title was "We or They?" Perry talked on "The Need for Proper Social Work."

Professor Rumion, of the public speaking department and in charge of the contest, said it was "one of the best contests ever held."

Other contestants were: Kenneth Thomas, '40, Cecil Woodbury, '41, Ervin Arbo, '40, Joseph Glasser, '40, Russell Wooley, '41, and John Jordan, '41.

Judges were: Professor Herschel L. Bricker and Mr. Delwin B. Dusenbury, of the public speaking department, and Mr. Milford E. Wence, of the English Department.

This was the only contest held, the preliminaries and finals being combined.

Dr. Ruth Crosby Returns to Maine

Faculty changes for the spring semester include the return of Dr. Ruth Crosby and the leave of absence of Dr. Stanley Ashby. Miss Frances Arnold, who was at the University of Puerto Rico, has transferred to Columbia University.

Dr. Ruth Crosby, assistant professor of English, traveled through Scotland and England last summer. During September she remained in London, and in October returned to the United States. Since that time she has been doing research work at Cambridge.

Dr. Stanley R. Ashby, assistant professor of English, is at Cambridge working on a volume of illustrative material for his course in the History of Literary Criticism.

Queen to be Chosen by Those Attending the Intramural Ball

PLAN SPORTS PROGRAM

Holiday Activities to be Climaxed
By Basketball Game With
Rhode Island Rams

By Mary Oberly

Beginning with the election of the Snow Queen at the Intramural Ball and ending with a New England Conference game, the 1939 Winter Carnival will include snow sculpturing and winter sports in the program of festivities scheduled to take place February 21 and 22.

Chase Contest Rules Listed

Will Award \$100 Prize
To Author of Best
Essay on Maine

Rules for the 1939 Mary Ellen Chase writing contest, the prize of which is \$100 awarded at Commencement for the best original prose dealing with the state of Maine, have been announced.

1. Any type of prose except plays (see Hamlet one-act play contest) is eligible: story, essay, historical, or biographical study.

2. Contributions should be between 3,000 and 8,000 words in length.

3. Any kind of source material may be used, but the organization and writing of the paper must be original.

4. All contributions must reflect in some manner Maine life, characters, or setting.

5. Papers must be submitted at the Registrar's office before five p.m., May 6, 1939.

6. With each paper must be submitted a sealed envelope containing the title and the writer's name. The Registrar will stamp corresponding numbers on each paper and envelope submitted. No name or pen name should appear anywhere on the paper submitted.

7. Contributions must be submitted in typewritten form.

8. More than one contribution may be submitted by one student.

Decision will be made by a committee of five judges, of whom three will be members of the University faculty. No award will be made if no contribution of sufficient merit, in the opinion of the judges, is submitted.

A sheet of helpful general directions for writers may be obtained by applying to Mr. Walter R. Whitney, 245 Stevens Hall.

The prize is given by Miss Mary Ellen Chase, a graduate of this University in the class of '09.

Candidates

Helen Wormwood, '41, Marion Fitzgerald, '40, Eunice Gale, '39, are members and Elizabeth Luce, '41, is a pledge of Alpha Omicron Pi sorority. Anna Verrill, '41, is a member of Chi Omega sorority. Helen Wormwood and Elizabeth Luce are Sophomore Eagles.

Kearny Kallander's orchestra will provide music for the Ball for the third consecutive year. Decorations will be in blue and silver. Programs will be blue with a silver medal. Members of the dance committee are John Littlefield, John Reitz, and Dallas Edwards.

A cup for the best snow statuary made by any organization will be given by the Maine Outing Club. Sigma Chi fraternity won the award last year. The judges for the contest will be Professors Benjamin Kent, Reginald Hobbah, Harry Watson, and Miss Rogers.

According to the rules issued by the Maine Outing Club, originality and appropriateness will be factors in the judges' decision. The work must be the product of the combined effort of the competing group as nearly as possible.

Winter Sports

With the Carnival Queen presiding, the winter sports events will be held Wednesday, either on the women's athletic field or on the field in front of Balentine. Members of the committee in charge of men's events are Melvin McKenzie, Harold Bronsdon, and Erwin Cooper.

Women's events will be under the direction of Elizabeth Libbey, Winter Sports Manager. Elizabeth Peaselee, Virginia Eddy, and Martha Hutchins will assist her.

(Continued on Page Four)

Announce Temporary Plans For Next Summer Session

Temporary plans and announcements for the 1939 Summer Session are contained in the preliminary issue of the "Maine Bulletin," edited by Dr. Roy M. Peterson, director of the University Summer Sessions. Thirty-three members of the regular University faculty will be supplemented by twelve visiting professors including Wilfred J. Hinton, of the London Institute of Bankers, who returns to Maine to teach courses in contemporary Europe and the Far East; Geraldine Clewell, of Texas Technological College, home economics; Orlie Clem, of N. Y. U., education; Matilda E. Dewes, of Bogota, art; Wilson L. Godshall, of Dickinson Junior College, history; Carl W. Haskel, of Penn State, economics. Adelaide Linnell, of Minn. State Teachers College, music; Paul S. Miller, of Eastern School; Fred B. Millett, of Wesleyan University, English; Ruth M. Moscrop, of Minn. State Teachers College, education;

Emma Schweppe, of Hunter College High School, history; and Earl Tharp, of Newark East Side Commercial High School, business administration.

Courses will be given in the departments of art history, chemistry and chemical engineering, economics and business administration, education, English, French, German, government, history, home economics, journalism, Latin, mathematics, school music, nursing education, physical education, physics, psychology, public speaking and dramatics, pulp and paper technology, sociology, and zoology.

In addition to the regular courses, many recreational opportunities are offered to students, such as dances, parties, trips, and sports. The campus dormitories are open for residence.

The complete bulletin for the summer session is to be released in March.

Rubber Industry Is Subject of Talk

Mr. Stanton Glover, chief chemist of the United States Rubber Products, Inc., Footwear Plant, at Naugatuck, Connecticut, will speak on the rubber industry Thursday, Feb. 23, at 7:00 p.m. in 305 Aubert Hall.

The program is sponsored by the local chapter of Alpha Chi Sigma. The talk will be of interest to everyone as it will cover the various aspects of the manufacture of rubber footwear. All the students and faculty are invited. Samples of various kinds of rubber, including synthetic rubber, will be on display.

After the lecture, refreshments will be served, and there will be an open discussion with Mr. Glover. The committee in charge of the program is made up of Henry Piorkowski, chairman, Gordon Carter, and Gerald Schmidt.

Fraternity Rushing To Conclude Sun.

Fraternity rushing will conclude Sunday, February 19, at 5:00 p.m. A one-day period of silence will follow. No fraternity man shall be in the company of any freshman on or off the campus during this period. The period of silence will conclude at 5:00 p.m. Monday, February 20. (Continued on Page Four)

Commercial Fishing Is To Be Studied

Closer co-operation between the University and the state Sea and Shore Fisheries Department in improving Maine commercial fishing was seen as a result of a conference held recently in which Pres. Arthur A. Hauck and Prof. Joseph M. Murray of the University, W. C. Herington and G. A. Rounsefell of the U. S. Bureau of Fisheries, and Arthur R. Greenleaf, commissioner of Maine Sea and Shore Fisheries participated.

It was tentatively decided to offer courses in "commercial fishing and allied subjects" at the University. Such subjects as propagation, conservation, transportation preparation of fish products, marketing, and by-product utilization may also be offered. Information on these topics will be disseminated as widely as possible through the media of pamphlets, radio, and lectures.

It is thought that this program may be carried out at little additional expense to the University through the substitution of the above courses for others of lesser importance.

According to Prof. Murray, the University Marine Biological Station at Lamorne would be of value in studying some of these subjects.

Plan For Farm And Home Week

Plans are nearing completion for the thirty-third annual Farm and Home Week, to be held at the University March 27-30.

Under the chairmanship of Professor Maurice D. Jones, the Farm and Home Week committee has planned a program of educational and recreational events second to none in the history of the event.

Prominent speakers in more than a score of fields are coming to the university for Farm and Home Week this year, and many special programs have been arranged.

The complete program of the event will be available within a few weeks.

Maine Senior Sits in Queen's Court at Dartmouth Carnival

Eleanor Crockett, '39, who reigned as queen of the Winter Carnival here two years ago, was one of the ten girls, chosen from the 1,100 attending the Dartmouth Winter Carnival last weekend, to sit in the queen's court.

"I smiled more in five minutes than I'd ever smiled in my life," laughed Miss Crockett, referring, when interviewed for the *Maine Campus*, to the photographing of the members of the queen's court for a scene in Walter Wanger's forthcoming technicolor production, *Winter Carnival*. In the Dartmouth scene in this movie, she was filmed directly in front of the queen of last week's festivities.

Although the showing of a scene takes but a second, its shooting requires repeated rehearsals, participation in which gave the girls a very different picture of the movie director than is popularly held. In contrast to the harassed, excited, irritable director, Wanger, a former

Dartmouth man, proved to be a very calm, patient, efficient executive, Miss Crockett said.

A special train, run out of Boston for all girls going to Hanover, started Miss Crockett off on one of "the most glamorous week-ends" she has ever had. Cameramen began then to take pictures of prospective candidates for queen. At the "Outdoor Evening" held that night, 20 girls were chosen from the 1,100 who passed under the decorated arch, and were led into the Dartmouth Outing Club house where they posed for cameramen.

The queen and her retinue were then assembled and led up steps of ice to the throne in the huge amphitheatre where colored floodlights were turned upon them. The queen was presented with a cup amidst music and the taking of more pictures.

The girls could always tell when Wanger's photographers were coming. (Continued on Page Four)

The Maine Campus

Published Thursdays during the college year by the students of the University of Maine

1938 Member 1939
Associated Collegiate Press
Distributor of
Collegiate Digest

Address all business correspondence to the Business Manager, all other correspondence to the Editor-in-Chief.
Entered as second-class matter at the post-office, Orono, Maine.
Subscription: \$1.00 a year.
Printed at the University Press, Orono, Maine.
Advertising Rate \$8 per column inch
Office on the third floor of M.C.A. building. Tel. Extension 51

William Treat Editor-in-Chief
William Hiltner Business Manager

EDITORIAL BOARD
Clement Smith Managing Editor
Marguerite Bannigan Associate Editor
Charles Peirce News Editor
Erwin Cooper Sports Editor
Rachel Kent Women's News Editor
Dorothy Shiro Department Assistant
Richard Look Campus Photographer

CONTRIBUTING EDITORS
Buel Godwin, Donald Moore, Mary Oberly, Louise Rice

STAR REPORTERS
David Astor, William Chandler, Mary Curran, Linwood Day, Dorrie Dow, Kathleen Duplisse, Alma Hansen, Kendrick Holgdon, Emily Hopkins, Boris Kleiner, Eleanor Look, Virginia Pease, Margaret Peaslee, Henry Piorkowski, Albert Toner, Irene Whitman, Joyce Woodward

REPORTERS
Richard Cranch, Dorothy Day, Virginia Eddy, Robert Elwell, Edith Jacobs, Richa Katz, Charlene Perkins, Warren Randall, Ada Saltzman, Gwendolyn Weymouth, Barbara Whittridge

CUB REPORTERS
Marcia Finks, Edna Louise Harrison, Charles Leising, Helengrace Lancaster, Mary Scribner, Mary Louise White

BUSINESS STAFF
Peter Skoufis Advertising Manager
Ralph Sanborn Circulation Manager
Frances Andrews Subscription Manager
Eugene Gilbert Department Assistant
Harold Jordan Department Assistant
Roy Shephard Department Assistant
Merlin Scanlin Department Assistant

For Freshmen Only

In the first place, freshmen, you must undoubtedly realize that one of the greatest benefits that you are receiving in college is the social contact which you make while here. Your future happiness will be greatly enhanced through the profits from your socialization in a collegiate environment and through the numerous friends which you make. The trivial acquaintances of today will live on to become the firm and invaluable friendships of tomorrow. To cultivate and increase these friendships, you are being offered opportunities which will probably never be equalled again in your lives. There are few agencies which present a social environment superior to that of your University.

Of the many colleges and universities throughout the country which have adopted the fraternity system to answer their housing problem, the University of Maine has one of the most satisfactory. It must be understood that in any fraternity system there are certain faults which are inextricable; consequently, no system has yet been devised which is completely satisfactory. At Maine, however, after years of tireless effort, attended by considerable study and experimentation, we have evolved a system which is subject to an unusually small amount of criticism. Expenses at Maine fraternities are comparatively low, the average scholastic standing is appreciably higher than that of non-fraternity groups. More than that, there is a tolerant and democratic atmosphere, not commonly associated with the popular conception of fraternities. No freshman should fail to take advantage of these opportunities.

It is well for freshmen to join fraternities, but it is unfortunate that so much emphasis is placed upon the differences among the houses. Not only are the differences among the houses small, but the houses are constantly changing, and rarely does any one rest consistently below or above the average. These differences are further minimized by the fact that we are all extremely well capable of rationalization. Although it is rather paradoxical, for his first year or two almost every fraternity man considers his fraternity the best. So no matter what your choice, freshmen, you will, like all your "brothers" before you, think you have made the best choice. Therefore, if you have difficulty in choosing your fraternity, do not let your indecision prevent you from pledging, for your decision today will undoubtedly be as satisfactory as one made three years hence.

Alumnae Groups Will Hear Dean Wilson

Dean Edith G. Wilson will address the New York and Boston alumnae associations while traveling to, and returning from an educational convention in the middle west next week.

On Saturday, February 18, Dean Wilson meets with the New York alumnae in Wanamaker's club room. This group of alumnae has shown much interest in undergraduate women and contributes regularly to the General Alumni Scholarship.

The following Saturday she will attend a tea given by the Boston alumnae in the Women's city club. This organization has established a woman's loan fund to which they make a supplementary gift each year. At both of these meetings, Dean Wilson will speak on current campus topics.

A get-acquainted sweater and skirt party will be given for the off-campus women at the M.C.A. building Saturday evening, February 25.

Games, music, and informal discussions are planned.

The following committee is in charge: Dorrie Dow, chairman; Ada Saltzman, tickets; Virginia Barstow, invitations; Margaret Steinmetz, games; Emily Blake, refreshments; Ruth Desjardins, music; and Clara-Lyn Preble, publicity.

All Off-Campus women who plan to attend are asked to sign up on the M.C.A. bulletin board.

Elms, Balentine, Colvin Elect Dorm Officers

Three of the girls' dormitories recently held their semi-annual election of officers.

They are as follows: Colvin—Katherine True, president; Ruth Trickey, vice president; Ernestine Carver, secretary-treasurer; Esther Drummond, social chairman.

Balentine—Madge Stacy, president; Marion Fitzgerald, vice president; Elizabeth Emery, secretary; Elizabeth Libbey, treasurer; Eleanor Crockett, social chairman.

The Elms—Helen Wormwood, president; Virginia Moulton, vice president; Elizabeth MacAlary, secretary; Jane Page, treasurer; and Margaret Moulton, social chairman.

LATEST !!!

"Honest Jim" Murphy, Mayor of Rhode Island State College, has accepted an official invitation, it was announced this afternoon, to appear on the University of Maine campus next Tuesday and Wednesday at the several holiday attractions in a series of verbal duels with the Honorable Frederick Gillis "Frivolous Fred" Patterson, clam digger from Castine and Mayor of Maine. Dave Astor will manage the program for both notables.



By Louise Rice

In Rio on the Onivador and Other Poems. This book of verse came to the library from Brazil, a gift of the author, Mrs. Elizabeth Hanly Danforth, a graduate of Maine in the class of 1915. Almost all the poems have been published separately in magazines, and are collected here for the first time. Living in Brazil for twenty years, she has caught in her verse the fragrance of the tropic flowers and the color of sunset skies. Yet frequently there steals through the lines a remembrance of Maine—a Maine with its cool freshness, standing out in contrast to the sultry, heady beauty of Brazil.

SAUBADES

Serenely, surely in the blue, The Southern Cross wheels into view, No lovelier scene this world can show Save one—my heart must still repeat, An old New England village street Where lamps are golden on the snow.

COLOR

The turquoise tropic sky is all ablaze, The sun is high and brassy in the noon, The flame trees tower scarlet through the haze That shimmers upward from the hot lagoon.

But all the color the acacias make, All their flamboyant beauty is in vain To one remembering a mountain lake, October maples, and the hills of Maine.

Samuel Pepys, *The Saviour of the Navy* by Arthur Bryant. This book covers the last third of Pepys' life, and in no way does it descend from the excellence that has distinguished the first two volumes. These three volumes deal with Pepys' entire life, his boyhood, his years in college, and his work for his cousin, Edward Montague, who became the Earl of Sandwich, and through whose influence Pepys secured an office in the Navy. For a while he was merely content to draw his salary and ask no questions. Then when he began to take an active interest in it, he found it rotten to the core, unequipped, halfheartedly supported, and directed by untrained disinterested men. He learned all there was to be learned about the Navy, and then began to make revealing reports about the conditions and corruption. He rose to be Secretary to the Admiralty, and his supreme achievement was the complete reform of the English Navy. He was the perfect civil servant, a stern unbending administrator, untouched by bribery, and through his care and attention, the Navy achieved a supremacy that lasted for two and a half centuries.

Mr. Bryant has combined his compelling, interesting style with his intensive knowledge of Pepys in a manner that must place him among the foremost living biographers.

Brave New World by Aldous Huxley. This novel is interesting, not only for its portrayal of the completely industrial civilization of the future (632 A.F.—After Ford), but for the canny ironic thrusts Mr. Huxley so neatly makes at present-day civilization. In this future civilization, children are produced in test-tubes, where conditioning and body content decant them to be Alphas (future world controllers) or Epsilons (factory workers). Brought up together in their respective intelligence groups, they take their place in society and are completely happy. The supply of workers never exceeds the demand, for just enough are decanted for the needs of commerce. There are no conflicts.

In the words of the Comptroller, "You're so conditioned that you can't help doing what you ought to do. And what you ought to do is on the whole so pleasant, so many of the natural impulses are allowed free play, that there really aren't any temptations to resist." The civilization worked well for all who were conditioned properly, but Bernard (who had too much alcohol in his blood-surrogate), Helmholtz (who was too intelligent for any group), and John (the noble savage from an Indian pueblo), were unable to agree with the system and were smashed by it. "O brave new world that has such people in it."

Mr. Huxley seems to think that any successful Utopia would have to eliminate the individual—the thinking individual who would object to the system. Liberty of the mind would be the greatest real danger to any Utopian experiment.

The Amazon

By Emily Hopkins

The basketball schedule has been posted and the games are now being played off. Don't forget that your class needs your physical and moral support as it gets under way in this hooper competition! We'll expect to see you there.

Note: Games will be called as soon as there are enough players to start. If, fifteen minutes after the game is called, there are not at least five girls on each team, the game will be defaulted.

The basketball schedule for the coming week is:

Tues. Feb. 14
4:00 p.m. Soph. vs. Srs. B
7:00 p.m. Frosh vs. Srs. B
8:00 p.m. Jr. A vs. Srs. A
Wed. Feb. 15
3:20 p.m. Soph. A vs. Frosh A
Fri. Feb. 17
3:15 p.m. Jr. B vs. Srs. B
4:00 p.m. Soph. A vs. Srs. A
Sat. Feb. 18
10:00 a.m. Frosh B vs. Soph. B
11:00 a.m. Frosh A vs. Jr. A
Mon. Feb. 20
4:00 p.m. Jr. A vs. Srs. A
Thurs. Feb. 23
4:00 p.m. Soph. B vs. Jr. B

We are going to miss one of our star performers, and a grand girl—Charlotte Hennessy—in our coming competition, "Charl" has injured her back and was obliged to go home. Here's hoping you have a speedy recovery, Charlotte!

Don't Forget: The Winter Carnival. You must be signed up for either skiing or snowshoeing before Monday if you wish to compete. Not many have signed up so far. Come on, she who doesn't participate misses half the fun.

The badminton "birdie" has been flying rapidly of late. The semi-finalists are Lunt, Pierson, Armstrong, Hennessey, Benson, and Ohnesorge.

Plans for intercollegiate play day are shaping up in grand style. The purpose is a jolly get-together with no emphasis on competition. If possible, there will be a skiing outfit Saturday; if not, indoor games, such as basketball, badminton, will be in order. There will be an informal luncheon, and the climax of the whole affair will be a formal dinner held at the White House in Milford. The affair will break up Sunday morning.

To foster the participation of off-campus women in extracurricular activities and campus life, and to provide opportunities for social contacts and broaden the circle of acquaintanceship is the two-fold purpose of the Off-Campus Women's Organization, formed recently.

Ruth Leavitt is president of the organization. Other officers are: vice president, Emily Rand; secretary, Margaret Romero; treasurer, Mary Cowen; social chairman, Dorrie Dow.

Plans are being made for a "Girls' Party" to be given Feb. 27.

RADIO NEWS

By Buel Godwin

Last week the *Maine Campus* presented Hal Woodbury in a personal interview on the prospects for the Varsity Team which he is now coaching. Woodbury said that he thought the team stood a very good chance in the New England Conference if the players continued to play the type of basketball which they are now displaying. In view of last Saturday's thrilling game in the second period, it would seem that Hal's predictions were not far wrong.

On tonight's program there will be a surprise speaker. He is a person whom everyone will want to hear, and his interviewer will also be a surprise. Be sure and set your dial for WLBZ tonight at 700.

Last Thursday night the *Maine Campus* Trio, Beth, Skip, and Ruth, sang *Blue Skies*. Tonight they will sing their own arrangement of *F. D. R. Jones*. And it is rumored that a week from Thursday they may broadcast from Augusta, a la Major Bowes' Sunday program. If you like them, write and tell them by way of this column. And any suggestions for this program are more than welcome.

Next Sunday the *Maine Campus* Review, which is presented at 7:30 over WLBZ, will give a history of the Snow Carnivals, and present the candidates for Snow Queen. Virginia Maguire will interview them. This Sunday there will be no Faculty interview, but instead the prize winning fraternities of the snow sculpturing will be interviewed. The program will be in charge of William Clifford and Erwin Cooper.

On Sunday afternoon, March 26, the University of Maine will present a program as a part of the series known as the *Maine Schools on the Air*. The *Maine* Band will present three pieces, and also the Men's Glee Club. There will be a short dramatic skit on the History of the U. of M., written by Prof. Walter R. Whitney. A short talk will be given by President Arthur A. Hauck. The program will be under the direction of Mr. Delwin Dusenbury.

Last Sunday night the *Maine Campus* Review presented a short dramatic sketch on the Life of Lord Byron. The students taking part were Roger Andrews, Elizabeth Luce, Virginia Maguire, Paul Morin, and Russell Woolley.

Dr. Milton Ellis was the faculty member met in the Meet-the-Faculty interview. Dr. Ellis told about his life, and the work he is doing on the *New England Quarterly*, of which he is the editor.

Be sure to listen in on the *Maine Campus* broadcast tonight for a quarter hour of entertainment at 7:00 p.m.

Patronize Our Advertisers

Foot-loose and Fancy Free—

FOR sheer exhilaration and well-being you'll delight in Arrow's new formal attire.

Born with a royal touch the *ARROW LIDO* dress shirt is a thing of beauty, carefully tailored and authentically styled in the new narrower bosom. Even suspender loops and a trouser tab are provided to keep the shirt well behaved and always in place. If you wear tails or single breasted dinner coat—*LIDO* is your shirt. \$3 up.

The formal Arrow white ties are superb—self knotted, yet launderable. The butterfly type is the one preferred by most men. \$1.

Arrow wing collars . . . *HOST*, *PROM* and *LIDO*, are best sellers. 35c.

ARROW

DRESS SHIRTS

Many Sports Events Listed for Carnival

Competition in the sport events of the annual Intramural Winter Carnival will be held on February 22 and will begin at 9:30 a.m., it was announced by Prof. Stanley Wallace. All phases of winter sports will be covered by a list of events which includes ski dashes, jumps, claloms, mile and one-half ski race, and snowshoe dashes.

The competition is subject to the following regulations: All entries must be in not later than February 8. There will be seven places scored in the men's events and four places in the women's events. Points will be added to the team scores in the order which they finish. Intramural representatives will be held responsible for the team entries. The events will probably be held on the girls' athletic field or in front of Balentine Hall.

The complete schedule of events is as follows:

A.M.
9:30 I.M.C.C. Ski, one and one-half miles (30 seconds apart)
10:00 Women's Ski Dash Trials
10:20 I.M.C.C. Snowshoe, one and one-half miles
10:35 Women's Snowshoe Dash Trials
11:00 Women's Relay
11:15 Women's Obstacle P.M.
1:30 Men's Snowshoe Dash Trials
1:45 Men's Ski Dash Trials
2:00 Women's Snowshoe Dash Finals
2:20 Men's Snowshoe Dash Finals
2:30 Men's Ski Dash Finals
2:40 Men's Relay
3:00 I. M. Slalom
3:30 I. M. Jump

"Die Hiemat," German Film, To Be Presented Tonight

Deutscher Verein will present *Die Hiemat*, a German film with English sub-titles, at the Strand Theatre in Orono on Thursday, February 16.

Die Hiemat is one of a series of European films being sponsored by the National Committee on Foreign Films in college towns throughout the United States. Many of the best films in recent years have been produced abroad. It is hoped that, if this presentation is successful, other foreign films will be presented at monthly intervals on this campus.

The film is based on the play by Hermann Sudermann, immortalized in France by Sarah Bernhardt. It has appeared on English-speaking stages under the title *Mayda*. The American silent film version starred Clara Kimball Young; the talkie stars Sarah Leander.

President Arthur A. Hauck has recently returned from Live Oak, California, where he was called by the death of his mother, Mrs. Ernestine Hauck, on Feb. 7.

M. C. A. NOTES

There will be a Swing Band rehearsal tonight at 7:00 in the M.C.A. building. The band will leave the M.C.A. building Friday, February 17, for Rockland where they will play for the Kippy Carnival.

The Swing Band will play for an informal at Lambda Chi Alpha after the basketball game Saturday night. Vesper service will be held Sunday afternoon, February 19, at 4:15 in the Little Theatre. Rev. Albion Beverage will speak on "The Quest for Certainty." There will be special music by the Women's Glee Club.

The Women's Glee Club will meet at the Little Theatre for rehearsal Sunday afternoon at 3:00. It will also rehearse Wednesday, February 22, at 6:30 in the M.C.A. building.

The Men's Glee Club will rehearse at 7:30 Wednesday, February 22, in the M.C.A. building.

Eric Kelley Dubbed Peat King of Maine

Eric Kelley, former University student, '39, and a member of Phi Kappa Sigma, is Peat King in Washington County, according to a recent story in *The Yankee*.

Kelley began turning out baled peat moss last April and believes he can supply as much as the United States can use. An ideal soil conditioner, 77,536 tons of it, valued at \$1,219,000, were imported in 1937 as compared with 464 tons, valued at \$16,000, in 1919.

Inspired by a chance remark of an agronomy professor in class over a year ago that there were extensive undeveloped peat moss deposits in Washington County, Kelley discussed the matter with his father and the agronomy staff. Leaving college, he bought 5,000 acres of the area said by the United States Department of Agriculture to be one of the few in the country having true sphagnum moss peat deposits.

Moss peat is used by nursery men as a propagating medium and for packing bulbs. It makes an ideal bedding for cattle, and, relatively sterile, it is a valuable storing material, a good insulating agent, and was used during the World War for surgical dressings.

Correction: Linwood McPheters, contrary to a statement made in last week's *CAMPUS*, has not been married. Rather, it was his twin brother, Leonard.

The assembly which was to have taken place last Monday morning with Prof. Max Lerner as the guest speaker was postponed.

By The Dawn's Early Light!

Do's and Dont's for Night Owls

DO wear a white tie with tails—black with tux. Buy the square end butterfly type.
ARROW Dress Ties . . \$1.

DO wear a stiff bosom shirt and wing collar with tails or single breasted tux. Arrow *Kirk* and *Lido* are the world's best belated dress shirts. In birdseye pique or plain bosom they're tops in quality and value at \$3.

DON'T wear a turn down collar with tails; with double-breasted tux it's okay. Arrow *Shoreham* has the collar attached—a pleated bosom—and oh, how comfortable.
ARROW Dress Shirts . . \$3.

GO Arrow and you go authentic.

If it hasn't an Arrow label it isn't an Arrow.

VIRGIE'S

ORONO

New Hampshire and Rhode Island Are Next Maine Court Opponents; Even Break For Bears Expected

Jaworski Is High Scorer In N.E. Conference

By Dave Astor

New Hampshire's Wildcats and the Rhode Island Rams provide the Black Bears their next basketball opposition. Maine plays New Hampshire here Saturday and the Keaneymen the following Tuesday.

Can the Wildcats rip apart the Maine attack or will the Black Bears maul the Wildcats? According to the so-called basketball experts, the Pale Blue will be a slight favorite to whip the boys from Durham. However, "Don't sell us short" is New Hampshire's answer to the experts.

Rhode Island Favored

From the Maine point of view, the less said about Rhode Island the better. Led by Chet Jaworski, a great center, this two point a minute quintet has been undefeated to date. The Keaneymen are said to be the best basketball team ever developed in New England.

Their three high scorers, Jaworski, Conley, and Keaney, are leading the New England Conference scoring race in that order. In a recent game against Springfield College, Jaworski scored forty points.

Coach Woodbury has spoken several times of the improvement shown by his guards, Chick Wilson and Charlie Arbor. This pair of back-courtmen can be compared favorably with any other pair of guards in the New England Conference. Wilson is one of the highest scoring guards in the New England Conference.

Bears Are Beaten In Overtime Period

Maine's last-half rally was enough to send the Bears into an overtime period last Saturday night, but the Black Bears just didn't have enough to stop the sharpshooting of Herb Peterson, lanky Connecticut forward, and the Nutmeggers finally won in an overtime period, 53-49.

The Pale Blue trailed 32-14 at half time, but rallied during the second half, and with Drew, Wilson, and Bourgoin finding the range, tied the game up at 46-46 with less than two minutes to go. With six seconds left Arbor fouled Doherty and the Connecticut star sunk his foul shot to send the Aggies out front 47-46. Drew took the ball down the floor immediately afterward to be fouled by Peterson as the final gun went off.

Referee Ollie Berg motioned Dana to the foul circle, and, with the spectators hanging on breathlessly, Drew proved himself to be a money player and sent the game into an overtime period by making his try good.

In the overtime, however, Herb Peterson again found his eye and sent the Nutmeggers on to victory as he sank two baskets and then helped his team-mates freeze the ball while Maine was able only to score two points via a basket by Charley Arbor. Peterson and Donnelly were outstanding for Connecticut, while Drew, Wilson, and Bourgoin were Maine's aces.

Patronize Our Advertisers

GO TO

Carroll Cut-Rate

28 Hammond St., Bangor

for

Famous Brands

HELENA RUBENSTEIN

EARLY AMERICAN

LUCIEN LELONG

LENTHERIC

GUERLAINS

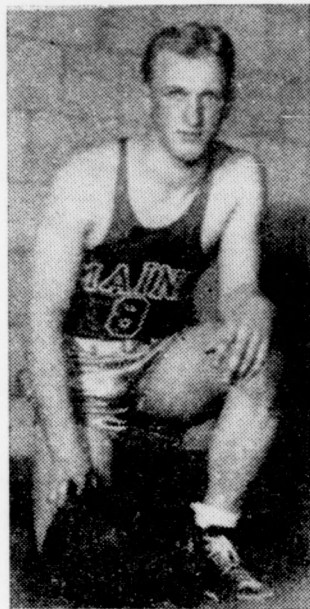
CARONS

VITA-RAY

H. H. AYER

Expert Cosmetician's Advice

Charlie Arbor



... is an outstanding guard on the Pale Blue varsity basketball team.

Stan Johnson Wins Event at Harvard

Maine's newest candidate for national honors, Stan Johnson, started the new season off in a big way last Saturday, when he won the 35 pound weight throw at the First Annual Harvard Indoor Weight Meet.

The husky junior beat a field of thirty competitors from ten colleges, including Harvard, Yale, Princeton, and Bowdoin. His winning toss was 53 feet, 1 1/2 inches, with a Harvard man right behind him. Third place went to Boulter, of Bowdoin, and fourth place to Bob Bennett, of Maine. Bennett's distance was 43 feet 9 1/4 inches.

A collision spoiled the Pale Blue mile relay team's entry into outside competition. In the Fiftieth Annual B.A.A. Games, Ken Bouchard ran into a Connecticut runner when the latter entered Bouchard's lane to pick up a dropped baton. The Maine sprinter was forced off the track and lost his baton. Before he could get started again he had lost well over twenty yards, an impossible handicap to make up under the circumstances.

Winter Sports Team Beats Colby and Bates

A powerful winter sports squad brought the University of Maine into the sports limelight last weekend by capturing both the Bates and Colby Carnival Meets. Of the twenty squad members making the trip, a team of four was left at Colby, with the remaining men going on to Bates.

At Bates the Maine team sprang into an early lead Friday by garnering ten of the fifteen points scored in the four mile cross country race. Within the five scoring positions, Maine placed three, B. Bower and J. Bower taking first and second places and Roy coming in a strong fifth. In trailing B. Bower by seven seconds, J. Bower practically repeated his performance at New Hampshire the week before, in which he was six seconds behind his brother.

Competition in the slalom and downhill races on Saturday morning gave Maine an even greater lead. Seven of the qualifying ten places in the final trial of the slalom went to the Pale Blue team, with B. Bower, Riddle, and J. Bower taking the first three places followed by Woodbury in fifth position.

The downhill race was the only event in which the Maine skiers failed to get a majority of points. Bates led this event by a score of 8 1/2 to 6 1/2 points. B. Bower again scored

with a tie for second, followed by J. Bower in fourth position and Greene in fifth.

The jumping event held on Saturday afternoon climaxed the successful Maine conquest, with Greene, Riddle, and J. Bower in first, third, and fifth positions piling up more points. Two jumps were allowed, with scoring based on both form and distance. Final score for the meet gave Maine 38 1/2 points and Bates 21 1/2, Bowdoin being completely shut out.

The events of the Colby Carnival were all held Saturday morning. On the three event program, the Maine team scored 16 1/2 points, Bowdoin 9, and Colby 1 1/2. Strang garnered the most points, with a second in the slalom and cross country and a tie for third in the downhill. Duffy came through with a first in the downhill and Chandler with a first in the cross country to clinch the meet. Only three positions were scored in each event.

YOUR LATEST OUTSTANDING SCREEN HITS
BANGOR and ORONO
M & P Theatres

OPERA HOUSE

BANGOR
Thurs., Fri., Sat.
"TOPPER TAKES A TRIP"
starring
Constance Bennett, Roland Young, Billy Burke, Verree Teasdale

Mon., Tues., Wed., Thurs.
Carole Lombard
James Stewart
"MADE FOR EACH OTHER"
Everyone's asking for this Great Picture

BIJOU

BANGOR
Thurs., Fri.
Boris Karloff
in
"DEVIL'S ISLAND"
Horrors of the French Penal Colony

Sat., Mon., Tues., Wed.
Kipling's Immortal—
"GUNGA DIN"
starring
Cary Grant, Douglass Fairbanks, Joan Fontaine, Victor McLaglen

STRAND

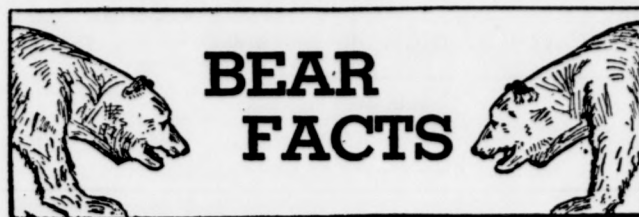
ORONO
Thurs., Feb. 16
The German Film
"HEIMAT"
Sponsored by German Department

Fri. & Sat., Feb. 17-18
"THEY MADE ME A CRIMINAL"
John Garfield, Ann Sheridan
The Dead End Kids
News—Cartoon—Travelog

Mon. & Tues., Feb. 20-21
Tyrone Power, Nancy Kelly
in
"JESSE JAMES"
In technicolor
Paramount News

Wed., Feb. 22
This is the Big Nite
Don't miss it!
showing

"AMBUSH"
with
Gladys Swarthout, Lloyd Nolan
Three shows daily, 2.30, 6.30, 8.30
Feature 3.00, 7.00, 9.00



By Erwin E. Cooper

Athletic successes, like business, travel in cycles, but it doesn't take any athletic economist to see why some of the University of Maine's coaches are currently spending some sleepless nights and some restless days wondering what the University's athletic stock is going to sell for on the Intercollegiate Exchange. We may not be facing the 1929 crash, but certainly there have been enough reverses of late to point to the fact that perhaps we're headed for a recession unless some new discoveries are made in the athletic laboratories to influence the market.

First of all, Coach Brice was disturbed last fall when Ervin Ballou, as good a football prospect as had been seen here for sometime, left the University. This loss also hurt the track subsidiary of University of Maine Holdings (Limited), for Ballou was also an outstanding weight man, and past events have proved that the current Little Track organization is none too strong.

The Basketball Team was beginning to gather momentum before finals and one of the most promising men on the squad was Vern Kent, a sophomore. All of my dear readers now know how the government stepped in and took prospect Vernon away. Democratic discrimination against the State of Maine, some would call it!

That, however, wasn't the end, for one day Coach Jenkins went out to the track and decided to look over his production of sprinters and hurdlers, and found that Ed Ruddock, his outstanding prospect, had retired from the scene. Final examination period came around and Melvin McKenzie, an outstanding hurdler, somehow slept through a few classes and is now unable to make up the work in time for the meet with New Hampshire on Saturday. In addition, Smokey Jordan, outstanding middle distance runner, is unable to compete in track. As if that were not enough, Ken Blaisdell, one of Maine's hopes to compete in the Distance field, reported a sore knee which may also keep him out of Saturday's competition.

In other words, the market quotations are fairly low. Of course, the experimental laboratories are always going and, even though experiment may breed discovery, things look pretty dark.

Of course, the Winter Carnival is just around the corner, but it may be even farther away than prosperity with the warm tropical breezes and showers that are blowing over the Campus this afternoon.

Nobody wants to get panicky and sell University of Maine Holdings short, but these are merely points for sober reflection.

BATES-MAINE

(Continued from Page One)

deserved 61-46 victory over Kents Hill last night.

Delaney, Kents Hill star, played well enough to win an ordinary game. But the frosh were not playing ordinary ball, and, sparked by Small, who made 25 points with 23 shots, they

scored 30 points the first half against 27 for the Hilltoppers, and 31 more in the second to clinch the game as the tiring prep school team could account for only 19.

The point-a-minute frosh attack was achieved by the fine play of Small, Crowley, Leger, and French. For Kents Hill, Delaney, Corrao, Graves, and Russell played good games.

First Dual Track Meet Offers New Hampshire And Bridgton Saturday

Visitors Will Bring Strong Outfits To Compete

By Warren Randall

The first indoor dual track meets of 1939 will take place Saturday afternoon in the Memorial Gymnasium field house, where New Hampshire and Bridgton Academy clash with the Pale Blue varsity and Freshmen. New Hampshire has a strong team well studded with unusually good sophomore talent, while Bridgton Academy will present its usual powerhouse track and field outfit.

The varsity runners and jumpers are generally given a slight edge over the invaders, although Coach Chester A. Jenkins struck a more pessimistic note when he said that the team will have to be better than it has looked the last few weeks if it expects to win. Don Smith is the only runner who is really a veteran, since Mel McKenzie is temporarily ineligible. If he can clean up his deficiencies before Saturday he will be able to compete, but at present it looks as though much would depend upon the performances of Atwood, Ehrlenbach, and Blaisdell. Atwood is a letterman, and the other two are sophomores.

Coach Jenkins frankly concedes the Freshman meet to Bridgton. Not for many years has the yearling squad been so weak. Midyears eliminated most of the handful of good men, but even if they were available there would be little question as to the outcome of the meet.

New Hampshire will probably have at least one good man in every running event, and in most of the other events as well. Wright in the 70 yard dash and Tabb in the 300 yard run are both possible first place winners although Bob Atwood may cause an upset. Abbott in the 600 yard run should give Ken Ehrlenbach a good race. In the two mile run Underwood, the man who gave Bill Hunnevell such a race last year, will probably beat Ken Blaisdell, who is nursing an injured knee.

Don Smith will undoubtedly have things his own way in the 1000 yard run and in the mile.

Burt Mitchell has pole vaulted well over 12 feet, and he tied Spike Leonard in the dual meet last year. Maine ought to sweep the weight throw with Johnson and Bennett on top. In Mather, New Hampshire has a man who can broad jump better than 22 feet, while Bill McCarthy will face very stiff competition in the high jump. There will be no discus or javelin throw in the meet.

STUNNING EVENING DRESSES

FOR

Intramural Ball

VOGUE FASHION SHOP

BANGOR, MAINE

(Just off Main Street at the Cross Street side entrance of the Coe Building)



If I were a cobbler
I'd make it my pride
The best of all cobblers
to be—

Shoe Shop on the Rouge

It may surprise you to learn that a cobbler's shop runs daily at the Ford Rouge plant in Dearborn. But the Ford plant is full of surprises. Every one has a practical answer.

Hundreds of workers in the Rouge require special types of footwear. These the company furnishes. So a steady stream of worn-out footwear reaches the Rouge cobblers,

and the busy tap-tap of their hammers joins the rhythm of ten-ton presses and heavy rolling mills.

The cobbler's shop is one part of the great drive that prevents waste in the Rouge. Lumber from incoming crates is sorted and used for outgoing shipments. Waste paper and wood chips go to the Rouge paper mill. Metal particles removed

by grinding wheels and metal saws are reclaimed. Nothing is lost—nothing wasted.

All this plays a part in making finer, better Ford cars. Pennies saved are pennies earned. Multiplied at the Rouge into millions, they help build the value that keeps millions of Fords delivering dependable, economical service year after year.



FORD MOTOR COMPANY



SOCIETY

Sigma Chi Informal

Sigma Chi held an informal Friday, February 10, with music supplied by Watie Akins' orchestra. Chaperons were Mrs. Roberts, the house mother, and Mr. and Mrs. Stanley Wallace.

Those present were: Anna Verrill, Lawrence Emery; Mary Cooper, Milton Bodman; Marguerite Davis, Clarence Peterson; Mary Flanagan, Robert Small; Margaret Sawyer, Robert Merrill; Mary Bearce, Robert Holmes; Norma Sylvester, Donald Huff; Verna Gerry, James G. Cooper; Ruth Peabody, Donald Roberts; Helen Thorndike, Bryant Bean; June Phelps, Albert Cyson; Eleanor Look, John Colby.

Louise Rice, Henry Piorkowski, Marjorie Moulton, Philip Pierce, Gloria Miniutti, Wallace Francis, Marie Folsom, Rudolph Sadler; Frances Bickford, Jack Reitz; Mary White, Donald Griffice; Nancy Philbrook, Einar Olson; Florence Atwood, George Riese; Florence La Plante, Philip Grant.

Dorothy Washburn, Allen Holmes; Mary Harmon, John Houston; Es-ther Drummond, Edward Tanner; Elizabeth Peaslee, Ellwood Church; Virginia May, Parker Small; Betty Homans, Leonard Peterson; Barbara Emmons, Paul Galentine; Elaine Benjamin, Philip Harriman; Elizabeth Libbey, Jerome Bryers; Madeleine Banton, Stuart Smith.

Martina Griffith, Richard Piper; Marion Fitzgerald, Eugene Morin; Lorraine Dimitre, Gordon Winters; Ruth McClelland, Robert MacDonald; Virginia O'Rourke, Fred Tarbox; Thelma Edes, David Wallace; Helengrace Lancaster, Gordon Blanchard; Marylouise Piper, Edwin Lord; Mary Terrio, Homer Woodward; Mary McNutt, Francis Andrews; Theresa Johnson, Vincent Smith; Beulah Lewis, Clarence Genge; Eleanor Dougherty, Russell Leaf.

Kappa Sigma Informal

Kappa Sigma held an informal rushing party last Friday evening with music by Paul Monaghan and his orchestra. Chaperons were: Mrs. Anne Webster, house mother, Dr. and Mrs. George McReynolds, and Prof. and Mrs. Reginald Hobbah.

Other guests were: Bertram Blanchard, Dorothy Phair; William Evans, Margaret Doyle; Amos Fletcher, Jean Goodwin; John Wiedmar, Bernice Leighton; John Fink, Mary Bates; Gordon Winters, Lorraine Dimitre; Darrell Pratt, Lois Long; William Alford, Marcia Hinkley; David Wallace, Thelma Edes; Walter Stisulis, Hilda Rowe; James Cahill, Lillian Mitchell; Wilbur Edgecomb, Margaret Cliff; Fred Tarbox, Virginia Rourke; Frank Peterson, Ruth Reed; Donald Marriner, Mary Boone.

Alexander Walker, Violet Hamilton; Edward Ladd, Margaret Hauck; Edward Weed, Nellie Lewis; Edward Tracy, Geraldine Watson; John Byrne, Ernestine Pinkham; William Brann, Charlotte Dimitre; Paul Gress, Charlotte Currier; Edward Ross, Josephine; Wallace Beardsell, Elizabeth McAlary; Joseph Wallen, Barbara Perry; Frederick Newcomb, Alice Ann Donovan; Donald Ross, Elizabeth Ried; Hacker Putnam, Sarah Burleigh; Wallace Francis, Gloria Miniutti; Clarence Peterson, Cherrie Thorne.

Stewart Smith, Madeleine Banton; George Riese, Florence Atwood; Nathaniel Crowley, Jeannette Sanborn; Robert Small, Mary Flanagan; Charles Peirce, Eleanor Cousins; Thomas McCarty, Shirley Mitchell; Leonard Peterson, Elizabeth Homans; Clifford Blake, Agnes Walsh; Simon Taft, Catherine Laffin; Lawrence Muzzroll, Virginia Jewett; Norman Danforth, Beatrice Gleason; George Grant, Elnora Savage.

Herbert Peabody, Cleo Tuttle; Douglass Cowie, Edna Louise Harrison; Carlton Cressey, Mary Upham; John Derry, Virginia Moulton; Leon Breton, Constance Philbrook; George Smith, Frances Rhoda; Louis Harris, Mary Rogers; Richard Thomas, Barbara Grace.

Delta Tau Delta Informal

Delta Tau Delta held its winter informal house party last Friday evening with the Freshman Swing Band furnishing the music.

The chaperons were Mr. and Mrs. Maynard Hincks, Mr. and Mrs. Paul Lucas, and Mrs. Edith Graffam, house mother.

Those present included: John Pratt, Ella Teague; Charles Sherman, Mary Kennedy; Alan Kirkpatrick, Mary Curran; Erwin Heald, Alvalene Pier-son; William Finnigan, Muriel Dun- can; Harley Nelson, Ruth Grundy; Eugene McLaughlin, Margaret Or- ser; Edward Brann, Betsey Warren; Laurence Harlow, Edythe Natt; An- thony de Graffenried, Ruth Eastman; Conrad McDowell, Barbara Hard- ing.

Sterling Cobb, Elizabeth Scammon; Donald Moore, Ruth Fessenden; Al- bert Adams, Muriel Pratt; Willard Fenderson, Barbara Rowe; Thomas Smith, Elizabeth Ansell; Everett Kimball, Glena Johnson; Karl Wen- ger, Alfreda Mackin; Harold Potter, Edna McIntosh; Allan Storer, Win- ifred Blanchard; Bertrand Blan- chard, Dorothy Shaw; Carleton Her- rick, Jr., Charlotte Nickerson; Harry Hopkins, Neva Sylvester; Lloyd Brown, Elizabeth Jones.

Clifford Libby, Frances Sawyer; Earle Tibbets, Edith McIntire; Robert Small, Mary Flanagan; Clarence Peterson, Cherrie Thorne; Wallace Francis, Gloria Miniutti; Paul Du- mas, Dorothy Brewer; Gordon Win- ter, Lorraine Dimitre; Marcel Bou- cher, Frances Violette; Cecil Reed, Alice Crabb; Conrad Ray, Joan Chapman; Raymond Valliere, Dor- othy Upcott; and Mr. and Mrs. Allen Dyer.

Pack and Pine Held Skiing Outing Last Week End

Richard Holmes entertained the members of Pack and Pine at his summer camp at Beach Hill Pond, from Saturday noon until Sunday night. Mr. and Mrs. Warren H. Bliss were the chaperons. Skiing was the main feature of the weekend.

Those present were: Dorothy Phair, Joanna Evans, Helen Phil- brook, Ruth McClelland, James Fitz- patrick, Albert Bahrt, John Fitzpat- rick, Gordon Blanchard, John Alley, John Maines, and Richard Holmes.

Campus Calendar

Thursday Feb. 16

7:00 p.m. Campus broadcast. WLBZ.
7:00 p.m. Electrical Club, 29 Lord Hall
7:30 p.m. Education Club, Faculty room, South Stevens

Friday Feb. 17

1:00 p.m. Campus meeting.
7:00 p.m. Basketball game. Frosh vs. Higgins
8:00 p.m. Alpha Tau Omega Informal
Phi Kappa Sigma Informal
Phi Mu Delta "
Sigma Alpha Epsilon "
Sigma Nu "

Saturday Feb. 18

2:00 p.m. Track Varsity vs. N. H. U.
Track. Frosh vs. Bridgton
4:00 p.m. Beta Theta Pi Tea Dance.
Phi Gamma Delta Tea Dance
7:00 p.m. Basketball game. Frosh vs. Deering
8:00 p.m. Basketball game. Maine vs. N. H. U.
Lambda Chi Alpha Informal
Phi Eta Kappa "
Theta Chi "

Tuesday Feb. 21

9:00 p.m. to 2:00 a.m. Intra- mural Ball with Kearney Kalanders's Orchestra

Wednesday Feb. 22

Washington's Birthday—no classes
9:00 a.m. to 3:30 p.m. Intra- mural Sport. See story, page 3.

NOTICE

Fraternity pledging will take place at 15 Coburn Hall at the usual time on Monday rather than at the Little Theatre as previously announced.

An art exhibit of works in oil, pastels, charcoal, and water color, by Louis Thibodeau, '39, is being shown this week in the art gallery in South Stevens.

FRAT RUSHING

(Continued from Page One)

The freshmen are cautioned to comply with this ruling of the Interfraternity Council. During the period of silence, opportunity will be given those who wish to select a fraternity to make their pledge with a neutral body of officials who will take charge of the pledge listing.

The pledging will take place in the hallway on the second floor of the Administration building at the Little Theatre opposite Alumni gymnasium. Specific rules of the Interfraternity Council governing this procedure are as follows:

"Fraternity selections or pledges shall be made by freshmen from 2 to 5 p.m. on Monday, February 20, in the Little Theatre with satisfactory neutrals."

"Each fraternity shall submit to the officers in charge a list of the pledges which the fraternity will accept. The neutrals shall present the prospective pledges with a standard form as submitted, which the fresh- man will sign and deposit in the bal- lot box."

CARNIVAL

(Continued from Page One)

The day's sports events will be cli- maxed by a double-header basketball game. The Maine varsity will take on Rhode Island State and the Fresh- men will be matched against Bridg- ton.

Patronize Our Advertisers

ORDER YOUR INTRAMURAL CORSAGES

from
Bangor Floral Company

AGENT
Hartley Banton, A T O House

MASQUE

(Continued from Page One)

the latter a freshman, are both new- comers to the Masque. Barbara Welch, who will portray Cassandra, played the part of Hesione Hushabye in *Heartbreak House*.

Princess Hermione of Sparta as a child of six will be played by Cynthia Jenness, daughter of professor Lyle C. Jenness of the chemistry depart- ment. Barbara Whittredge, who ap- peared in *Jonny Johnson*, will play the part of Hermione at the age of sixteen.

Other parts will be played as fol- lows: Queen Hecuba, Calista Buzzell; nurse, Betty Jones; first Spartan page, George Cunningham; Spartan Messenger, Ervin Arbo; second Spar- tan page, Edward Marsh; Patroclus, Earle Rankin; A Spartan soldier, Lloyd Duggan; Prince Demokoon, Edward M. Stanley; Pandarus, George Cunningham; High priest, Mark Ingraham; first Trojan guard, Samuel Crowell III; Trojan page, Parker Moulton; Prince Troilus, Atwood Smart; Prince Glaucus, Edward C. Stanley; Prince Aeneas, Byron Whitney; King Odysseus, Charles Clough; Prince Deiphobus, Russ Dearborn; Nestor, Allston Keyes; King Agammemnon, Robert Irvine; Ajax, Bevan Cass; Diomed, Walter Stisulis; Artemus, Earle Rankin; A Trojan spy, John Colby; second Trojan guard, Bryant Bean; Trojan soldier, Francis Andrews; Trojan messenger, Wilson Alford; Trojan women, Violet Hamilton, Ruth Desjardins, Julia Warren, Virginia

Campus to Conduct Student Opinion Poll

A poll of student opinion will be conducted by a group of students next week and the results published in the *Campus*. The poll is being sponsored in co-operation with the psychology department and will be conducted bi- weekly if successful.

It is planned to place ballot boxes in Stevens, Wingate, Merrill, and Winslow Halls. Mimeographed sheets will be available at the boxes and are to be filled out and deposited before Monday at 5:00 p.m.

Some samples of the types of ques- tions to be asked are as follows:

1. Do you favor a third term for Franklin D. Roosevelt?
2. Do you favor publishing a gossip column similar to "Strange In- terlude" in the *Maine Campus*?
3. Should Congress be required to obtain the people's consent after

Howe, Hope Jackman; Barbara Savage, Beth Trott.

ELEANOR CROCKETT

(Continued from Page One)

ing, as they distinguished themselves from the countless other cameramen, both news and amateur, who crowded the campus for the event, by riding around in a sleigh equipped with bells.

McClelland Barclay, well-known American artist, was the judge who selected the queen.

Miss Crockett, a member of Alpha Omicron Pi sorority and a French major, studied at the Sorbonne in Paris last year. She is a member of the Maine Outing Club

declaring war?

4. Do you favor organization of farmers' cooperatives for buying sup- plies and selling products?
5. If the U. S. should enter another World War, would you enlist (check one)? wait for Drafts? refuse to go?

A meeting of all those interested in the poll will be held in the *Maine Campus* offices, Monday, February 20, at 1 p.m.

ORDER YOUR CORSAGES

from
Bangor Nursery Flower Shop

Bob Bramhall, Agent
Beta House

YOUR DATE BOOK SAYS: THE INTRAMURAL BALL FEB. 21st

Outrageously flattering formals that turn into a romantic beauty..... Evening charmers priced from..... 8.95 - 14.95.

The Grace Shoppe



★ GEORGE BRENT ★ OLIVIA de HAVILLAND ★ JOHN PAYNE

a Happy Combination
that gives millions More Pleasure

... and millions of people before and after the show are getting more pleasure from the *happy combination* of mild ripe American and Turkish tobaccos found in Chesterfield.

It is the exact way these tobaccos are *com- bined together* that makes Chesterfields milder and gives them a more pleasing taste and aroma. This exact combination is found in no other cigarette.

When you try them you will know why Chester- fields give millions of men and women more smoking pleasure ... why THEY SATISFY

Chesterfield
...the blend that can't be copied
...the RIGHT COMBINATION of the
world's best cigarette tobaccos

Copyright 1939, LIGGETT & MYERS TOBACCO CO.

WHOLESALE RETAIL

DAKINS

20% DISCOUNT

to all college students on
Skiis—Binds—Metal
Edges—Ski Poles and
All Ski Equipment

PHOTO SUPPLIES

Kodaks—Enlargers
Movie Cameras
Exposure Meters
Projectors—Papers

Chemicals and All Photo- graphic Materials for Both Amateur and Professional Use

25 CENTRAL ST.
BANGOR, ME.

ART IN FLOWERS

Brockway's Flower Shop

Central St., Bangor
Phil Gregory, SAE
Campus Agent

YOU WILL FIND IT AT
PARK'S HARDWARE
and VARIETY
31-37 MILL ST. ORONO

TUX RENTALS SWALLOW TAILS
ARROW TUX SHIRTS STUDS TIES
MAROON & WHITE MEN'S CORSAGES

at

BEN SKLAR'S
OLD TOWN

SALE or RENTAL