

The University of Maine

DigitalCommons@UMaine

General University of Maine Publications

University of Maine Publications

11-1-1993

1993-94 Women's Basketball Media Guide

Maine Sports Information Office

Follow this and additional works at: https://digitalcommons.library.umaine.edu/univ_publications



Part of the [Higher Education Commons](#), and the [History Commons](#)

Repository Citation

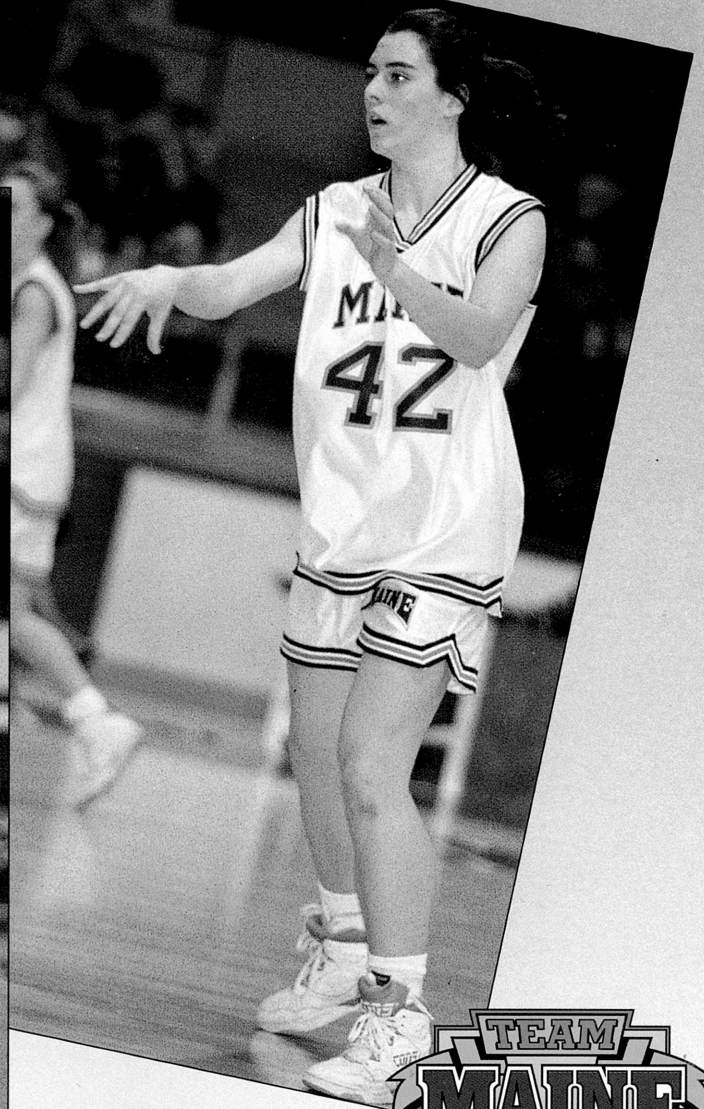
Maine Sports Information Office, "1993-94 Women's Basketball Media Guide" (1993). *General University of Maine Publications*. 3081.

https://digitalcommons.library.umaine.edu/univ_publications/3081

This Media Guide is brought to you for free and open access by DigitalCommons@UMaine. It has been accepted for inclusion in General University of Maine Publications by an authorized administrator of DigitalCommons@UMaine. For more information, please contact um.library.technical.services@maine.edu.

MAINE

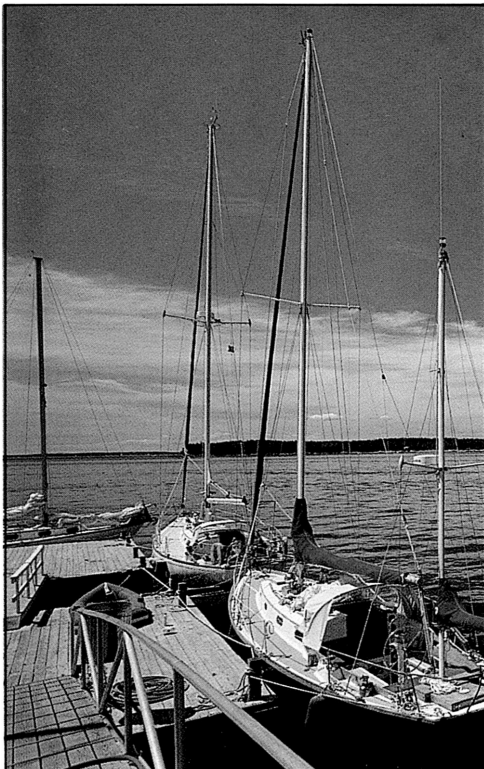
NAC
NORTH ATLANTIC CONFERENCE



*Rita Sullivan
Junior Forward*

*Chrissy Strong
Senior Guard*





The University of Maine is the state's center of learning, discovery, and service to the public. As the flagship campus of the University of Maine System and the state's land-grant and sea-grant institution, the University of Maine has the unique responsibility for providing high-quality undergraduate and graduate education programs, public services, and basic and applied research.

Centrally located in Orono between the Penobscot and Stillwater rivers and within close proximity to the ocean, lakes, and mountains, the University offers an inspiring learning environment.

BLACK BEAR FACTS

Location: Orono, ME 04469
Founded: 1865
Enrollment: 11,000
President: Dr. Frederick Hutchinson
Athletic Director: Michael Ploszek
Nickname: Black Bears
Colors: Blue and White
NCAA Affiliation: Division I
League Affiliation: North Atlantic Conference
Home Court: Alford Sports Arena (6,000)
Alternate Site: Memorial Gym (2,400)

Head Coach: Joanne Palombo (Northwestern, 1987)
Career Record: 9-20 (1 year)
Record at Maine: 9-20 (1 year)
Office Phone: (207) 581-4067
Assistant Coaches:
Lamar Boutwell (LSU, '90) (207) 581-1075
Kay Abrahamson (Iowa, '90) (207) 581-1073

Basketball Trainer: Wes Jordan
Student Trainer: Elizabeth Jewell
Equipment Mgr: Sharon Dupuis
Basketball Secretary: Dianne Gallant

Assoc. AD for Intramurals and Recreation:
Dave Ames

Assoc. AD for Academic Support:
Margaret Zillioux

Asst. AD for Finance:
Anne McCoy

Asst. AD for External Affairs and Development:
Mike Palisi

Ass. AD for Internal Affairs:
James Dyer

Sports Information Director: Matt Bourque

Asst. SID: Joe Roberts

Women's Basketball SID:
Diane Madl

Office Phone: (207) 581-1083

Home Phone: (207) 947-4419

Fax: (207) 581-3297

1993-94 Captains:

Chrissy Strong

Rita Sullivan

Players Returning/Lost: 8/2

Starters Returning: 4

Starter Lost: Heather Briggs 12.7 ppg, 6.2 rpg

Newcomers: 6

1992-93 Overall Record: 9-20

1992-93 Conference Record: 4-10/seventh

TABLE OF CONTENTS

THE UNIVERSITY OF MAINE

The University of Maine	2
Dr. Frederick Hutchinson, President	3
Michael Ploszek, Director of Athletics	4
Senior Athletic Administration	5
Athletic Highlights at Maine	6
Athletic Academic Support	7
Facilities	38-39
Black Bear Media	44

THE BLACK BEAR STAFF

Head Coach Joanne Palombo	8
Coaches Boutwell and Abrahamson	9
Coaches Benner and Briggs	10

MEET THE BLACK BEARS

1993-94 Basketball Outlook	11
Black Bear Bios	12-22
Numerical Roster	23

THE 1992-93 SEASON IN REVIEW

1992-93 Statistics and Results	24
1992-93 Season in Review	25

UMAINE OPPONENTS

Non-Conference Opponents	30-33
North Atlantic Conference Opponents	34-35

MISCELLANEOUS

UMaine Records	26
UMaine Year By Year Results	27
UMaine Record vs. All Opponents	27
Eighteen Years in Review	28-29
The North Atlantic Conference	36
NAC Composite Schedule	37
Did You Know?	40
UMaine's 1,000 Point Club	41
Why UMaine?	42-43

Credits: The 1993-94 University of Maine Women's Basketball Media Guide is a publication of the Maine Sports Information Office. Editor and designer: Becky Gibbs. Assistance provided by Matt Bourque, Joe Roberts and Jackie Jones. Photographs supplied by Monty Rand, UMaine Public Affairs. Cover designed by Mike Mardosa, Senior Graphic Designer, University of Maine Public Affairs. Printing by University of Maine Printing Services, Arthur Larsen, Director; Monique Hashey, Assistant Director for customer service; Fred Round, Assistant Director for production.

Back Cover: Front Row (left to right): Coach Palombo, Stacey Porrini, Kelly Stubbs, Seana Dionne, Chrissy Strong, Stacia Rustad, Rita Sullivan, Coach Abrahamson. Second Row (left to right): Cyndi Buetow, Trisha Ripton, Erin Grealy, Carrie Smith. Back Row (left to right): Coach Boutwell, Catherine Gallant, Stephanie Guidi, Lori Thomas, Izzy Bachmanek, Coach Benner.





The University of Maine

The University of Maine is the state's center of learning, discovery, and service to the public. As the flagship campus of the University of Maine System and the state's land-grant and sea-grant institution, the University of Maine has the unique responsibility for providing high-quality undergraduate and graduate education programs, public services, and basic and applied research.

Located in Orono, within close proximity to the ocean, lakes, and mountains, the University of Maine offers an inspiring learning environment. There is plenty of open space on its 1,200 acres, where students are offered the diversity and the challenge of a large university in an invigorating atmosphere of a small college. The campus is located 10 miles north of Bangor, Maine's third largest city.

The University's undergraduate and graduate educational offerings are built upon a liberal arts and sciences foundation complemented with profession-oriented education in a wide-range of disciplines, many of which are found nowhere else in the state. Because of their responsibility to teach, conduct research, and serve the public, faculty members are able to incorporate the

new knowledge they uncover with classroom activities, often giving students hands-on experience in the research process.

The campus houses the expansive Raymond H. Fogler Library and a number of respected modern research facilities to give the student an excellent learning environment.

Student activities at the University create an important balance between the classroom experience and the personal life of the individual scholar. The 1,600-seat Maine Center for the Arts attracts some of the world's top performers to the University of Maine campus.

The University offers its students, faculty, and staff as well as the people of the community and the state an outstanding athletic tradition. Several Black Bear teams have excelled to regional and national prominence, including the Black Bear ice hockey team, the 1993 NCAA Division I national champions.

Included on Maine's athletic staff is a full-time academic coordinator responsible for closely monitoring the progress of each of the 600 varsity student-athletes. Coaches also monitor and advise their student-athletes, fre-

quently holding meetings specifically to discuss academic situations. Study halls and special tutorial sessions are scheduled daily as a way to enhance the learning process. This support and close scrutiny has been a significant reason the overall grade point average of student-athletes has been higher than that of the general student body. The primary goal of the University and the Athletic Department is to see each individual reach his or her academic potential.

The Office of Recreation and Intramurals offers organized competition in a number of events throughout the year. Students can participate in a variety of intramural and club sports, while open facilities are available for informal play.

Maine's 19 Division I athletic teams entertain more than 100 intercollegiate events on campus each year attracting over 200,000 spectators.

The Department of Athletics contributes to the University goals of attracting motivated undergraduate and graduate students and producing graduates with the intellectual preparedness necessary for the personal and societal challenges of today and tomorrow.





**DR. FREDERICK
HUTCHINSON**
President

By action of the University of Maine System Board of Trustees, Dr. Frederick E. Hutchinson became the 16th president of the University of Maine on April 1, 1992. A native of Atkinson, Maine, Hutchinson was born June 1, 1930. In 1952, he married Dione Williams, and they have two daughters, Juliana and Karen.

Hutchinson earned his bachelor's ('53) and master's degrees in agronomy at the University of Maine. He earned his doctorate in agronomy from Pennsylvania State University.

Hutchinson was praised by the campus community, the media, and the citizens of the state for his handling of a strict budget cut in his first month on campus.

In addition, Hutchinson has given his support to the athletic program.

"I subscribe to the idea that athletics are a part of the University's image," said Hutchinson in an interview in *MAINE*, the publication of the University of Maine Alumni Association. "There are very good schools in the country that have built a tremendous image with athletic success.

"I'd like to see us maintain all of our sports, the major sports and the Olympic sports, because we need them both. What is important to me is to

decide at what level we are going to compete and be sure that we are putting our athletes on the playing field with an equal chance."

Prior to returning to the University of Maine, Hutchinson was vice president for Academic Affairs and provost of The Ohio State University. He joined the faculty there in 1985 as director of the Ohio Agricultural Research and Development Center. In 1986, he was named vice president for Agricultural Administration and dean of the College of Agriculture and later became acting provost on July 1, 1989. On Dec. 1, 1989, Hutchinson was permanently appointed to that position. In addition, he was named senior vice president for Academic Affairs and provost on Nov. 2, 1990.

As Ohio State's chief academic officer, Hutchinson was responsible for the academic environment on campus. Among the areas reporting to him were all instructional programs, the library system, the Office of Student Affairs, the Office of Minority Affairs, Continuing Education, the Biotechnology Center, the Graduate School, the Honors Center, ROTC, the Sea Grant College, the Super-Computer Center, the University Press, and the Wexner Center for the Visual Arts. The office also oversaw the promotion and tenure process for members of the faculty and initiated a recent revision to the undergraduate curriculum. Academic Affairs also worked with various offices and groups on campus to develop an action plan for the recruitment and retention of black students and a Hispanic action plan.

Before joining Ohio State, Hutchinson was executive director of the Board of International Food and Agricultural Development of the United States Agency for International Development. Earlier, he was a faculty member and vice president for Research and Public Services at UMaine.

Hutchinson joined the faculty at Maine in 1957. He held the positions of chairman of the Department of Plant and Soil Sciences from 1971-72; dean of the College of Life Sciences and Agriculture and director of the Maine Agricultural Experiment Station from 1972-75; vice president for Research and Public Services from

1975-80; and acting vice president for Academic Affairs from 1980-81. He returned to his post as vice president for Research and Public Services from 1981-82, before taking the federal post.

He has authored numerous journal articles, technical bulletins, and research articles. In addition, he has presented invitational papers at numerous scientific and professional meetings and has participated in several international programs.

Hutchinson is recognized as a leader among agricultural administrators and was instrumental in building the research program at UMaine. He had a positive impact on the significant increase in federal, state and private grant support for research at UMaine.

He has served as chairman of the Maine Food and Farmland Study Commission, the Committee on Erosion and Sediment Control, and the Advisory Committee on the Selection of Coastal Natural Areas. In addition, he served as a member of the Governor's State Energy Resources Advisory Board, the Governor's Committee on Coastal Development Conservation, and the Governor's Land and Water Resources Council.

He has also held the positions of administrative advisor to four regional and interregional agricultural experiment station projects; chairman of the Northeast Association of Agricultural Experiment Station Directors and the Joint Committee under the Board of International Food and Agricultural Development.

From 1986-89, he was on the Board of Directors of Agriculture for the National Association of State Universities and Land-Grant Colleges. In 1987, he chaired a panel of the National Academy of Sciences Board of Agriculture before accepting a one-year term as president of the Agricultural Research Institute in Washington, D.C.

Currently, he is a member of the Board of Directors for the International Center for Tropical Agriculture in Colombia.





MICHAEL PLOSZEK **Director of Athletics**

Michael Ploszek, 38, begins his third year of leadership at UMaine. Ploszek was appointed director of athletics on August 20, 1991.

A creative and progressive administrator, Ploszek has made an impact on the Athletic Department and the state of Maine.

Ploszek designed and implemented the "Team Maine" concept, which is a comprehensive statewide outreach program developed to enhance the Athletic Department's relationship with various constituencies. The concept includes the A+ Attendance program which recognizes and encourages the academic achievement and dedication of Maine students in grades 7-12. Almost 500 students from 58 Maine schools participated during 1992-93.

In addition, "Team Maine" includes the "Dream Big Dreams" aspirations series, an annual high-school athletic director's visitation program with Walt Abbott and athletic staff members. Together, the "Dream Big Dreams" team made over 75 public speaking appearances in 1992-93 at schools, civic organizations, and various other meetings.

Ploszek is a founding member and co-director of the Maine Center for Coaching Education, a new initiative throughout the state created to

enhance and upgrade the coaching profession throughout the high schools and recreation programs.

Under his direction, the Athletic Department implemented several budget reductions during the past two years and achieved an all-time high in private donations with over \$750,000 raised through the newly created Black Bear Club in 1992-93.

Ploszek was an integral member of the NCAA Division I-AA Football Issue Committee, a group established to evaluate the wide scope and future of Division I-AA football. In addition, he was named director at large to the North Atlantic Conference's Executive Committee and is one of the three members of the HOCKEY EAST Executive Committee.

Before coming to Maine, Ploszek had worked as assistant athletic director for development at Rutgers University in New Brunswick, New

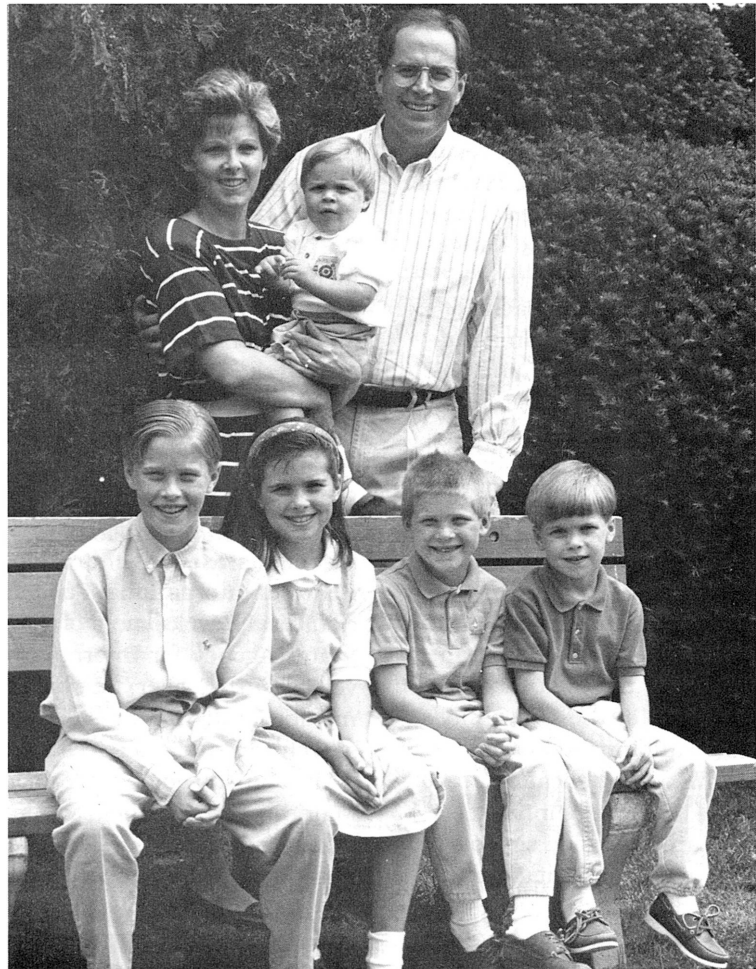
Jersey since 1986. He was responsible for all fund-raising activities related to Rutgers' 30 intercollegiate sports. While at Rutgers, he achieved athletic fund-raising records amounting to over \$10 million.

A 1977 graduate of the University of Notre Dame with a bachelor's degree in business administration, Ploszek was a backup center for the Fighting Irish football team for two seasons.

Following graduation, he spent seven years working in sales, marketing, and management for United States Steel Corporation.

He then accepted a job as regional director of development for Notre Dame in the Chicago area, a position he held until his appointment at Rutgers in 1986.

Ploszek and his wife, Karen, have five children, Mike, 12; Lauren, 10; Matt, 8; Pete, 6; and Luke, 2. The Ploszek family resides in Orono.



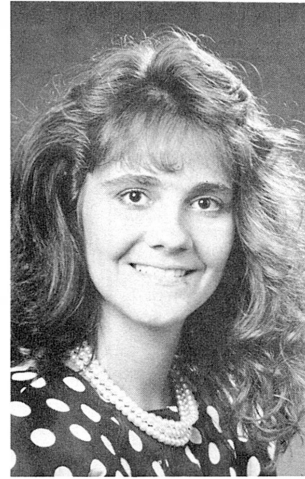
Senior Athletic Administration



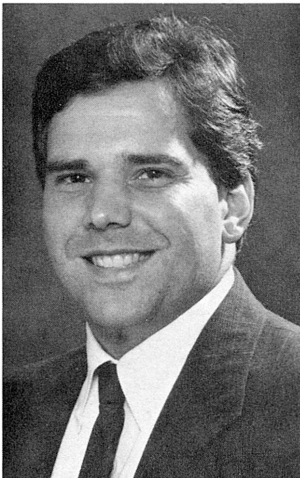
David Ames
Assoc. AD for
Intramurals/Recreation



James Dyer
Asst. AD for Internal
Operations



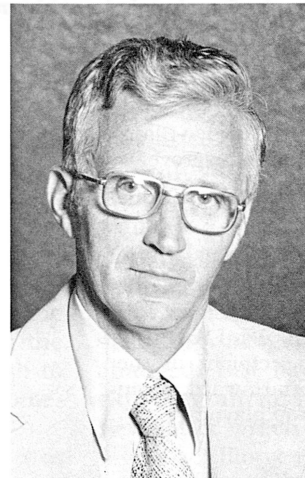
Anne McCoy
Asst. AD for Finance



Michael Palisi
Asst. AD for External
Affairs/Development



Margaret Zillioux
Assoc. AD for Academic
Support



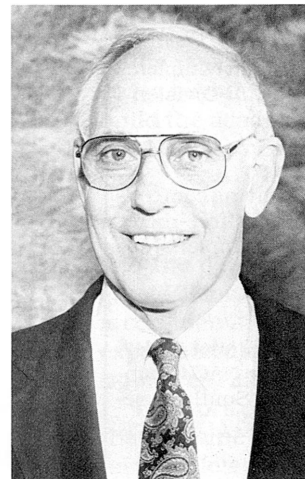
Linwood Carville
Compliance Officer



Dr. George Jacobson
NCAA Faculty
Representative



Dr. Sandra Caron
Chair, Athletic Advisory
Committee



Walter Abbott
Special Assistant to the
Athletic Director



1992-93 Athletic Highlights at UMaine

Baseball

- John Winkin's team wins the NAC Championship and returns to the NCAA Tournament led by NAC Player of the Year Chad White, an All-American, and NAC Pitcher of the Year Mark Ballard.

Basketball (Men)

- Francois Bouchard becomes the 10th player in school history to score 1,000 points and grab 500 rebounds in a career. Casey Arena is named to the NAC's All-Rookie team.

Basketball (Women)

- First-year head coach Joanne Palombo leads the Black Bears to the NAC Championship game for the fourth consecutive year.

Field Hockey

- Goalie Mary Lou Winstel sets the UMaine record for saves in a season. She also sets NAC marks for saves in a season and career.

Football

- Maine completes its first winning campaign since 1989. Former Black Bear quarterback Jack Cosgrove is named head coach.

Hockey

- Shawn Walsh's team sports a 42-1-2 record and becomes the first UMaine team to win an NCAA Division I National Championship. Paul Kariya is the first freshman recipient of the Hobey Baker Memorial Award, given to college hockey's top player.

Soccer (Men)

- NAC Rookie of the Year Jake Ouimet sets UMaine marks for goals and points in a season to lead the Black Bears to an 8-4-4 mark. Former Black Bear captain Scott Atherley is named head coach.

Soccer (Women)

- Dianne Boettcher's team completes its first season with a full Division I schedule.

Swimming and Diving

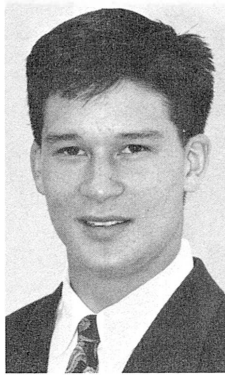
- Tom Hines wins the diving competition on the one- and three-meter boards at the NAC Championships held at Maine's Wallace Pool.

Softball

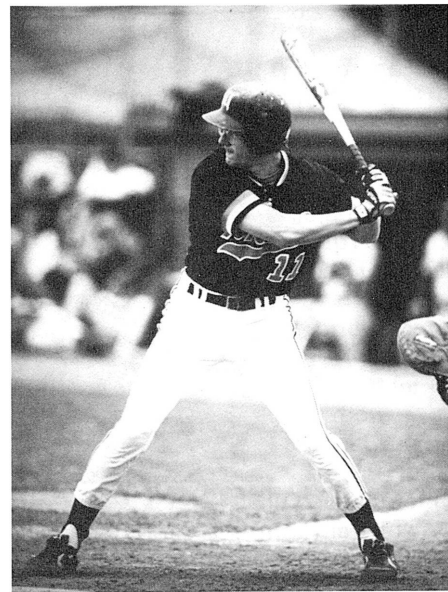
- NAC Coach of the Year Janet Anderson leads her team to the NAC Championship game as Deb Smith is selected NAC Tourney MVP.

Track and Field

- Kim Doucette sets a UMaine mark in the 100 meters while Jeff Young sets a school record in the 1000 meters.



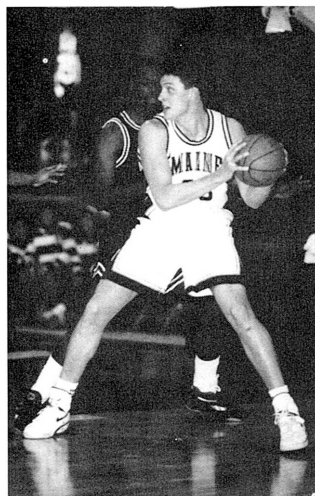
Paul Kariya scored a school-record 100 points while becoming the second consecutive UMaine player to win the Hobey Baker Memorial award.



All-American Chad White set a UMaine record for stolen bases in a season while leading UMaine to the NCAA Tournament.



The National Champion hockey team was entertained by President Bill Clinton.



Francois Bouchard recorded his 1,000th point and 500th rebound of his career.



Joanne Palombo led the Black Bears to their fourth consecutive NAC championship game appearance.



Athletic Academic Support

For the University of Maine, the 1992-93 season represented a year of tremendous athletic achievement. The ice hockey team captured its first ever NCAA Championship. The women's basketball team competed in its fourth-straight NAC Championship game. The baseball team returned to the NCAA Tournament for the seventh time since 1981. Five student-athletes were named All-Americans. Rookie Paul Kariya captured college hockey's top individual honor when he was selected the recipient of the Hobey Baker Memorial Award. But a closer look at the academic accomplishments of 1992-93 might indicate the most astounding achievements of UMaine's student-athletes.

Forty-seven student-athletes were named All-Academic by their respective conferences. University of Maine Scholar-Athlete Recognition Awards were given to a record 62 athletes who had maintained a 3.0 grade-point average last year. Deb Smith of the softball team was voted the North Atlantic Conference's top scholar-athlete in her sport. Jeff Wass was chosen the NAC's top scholar-athlete in golf.

Although much of the credit must be given to the student-athletes who dedicated themselves not only to rigorous athletic conditioning, but also to a dedicated academic schedule, much of the praise can also be directed to Margaret Zillioux.

As Associate Athletic Director for Academic Support, Zillioux is responsible for the nearly 600 student-athletes at the Orono campus. She makes students aware of existing support services on campus, like the career center or the tutoring department. She teaches time management skills and directs the mandatory study halls.

"I think it's very important that our student-athletes come to Maine to develop as people," says Zillioux. "They need to mature as complete people. Athletics are just one part of the college experience. Academics are another. There are countless experiences. My job is to make sure the academic experience is fruitful."

Zillioux wears many different hats, serving as a liaison between athletes, coaches, faculty and administrators. Each student-athlete is treated as an individual. No two situations are ever



The Sam Sezak Academic Lounge provides a quiet place for student-athletes to study during the day.

the same.

"To work face-to-face, first-hand with each student is very important," says Zillioux. "If all our contact is in the form of memos and phone calls, we're not accomplishing what we set out to do. Each case is different. Some need very little guidance or just some reinforcement. Others may need a tutor or the opportunity to discuss class with the professor. Some just need a push to get to class on time. They need someone to trust."

One way to establish that trust is to attend sporting events. While working toward her master's degree at Iowa and serving as an academic counselor for the Hawkeyes, Zillioux would enter Dan Gable's wrestling practice room, an area foreign to virtually all non-wrestlers. At UMaine, Zillioux can be seen near the 50-yard line of Alumni Field, at midcourt or center ice at Alford Arena.

"If we're going to accomplish anything on the academic side, it's important that the student not always see me across the desk," says Zillioux.

Since Zillioux's arrival on campus five years ago, the grade-point average of student-athletes at UMaine has risen to a level where it is higher than that of the general student body. The graduation rate of UMaine athletes is 9.1 percent higher than that of the national average.

"I like to think of my job as a dose of

preventive medicine," says Zillioux. "We solve the academic problems before they arise. We have to teach our student-athletes to not only develop as athletes, but also to play the academic game."

With grade-point averages rising, and academic casualties at a minimum, one might expect Zillioux's outstanding program to remain unchanged. But like the general study skill program and the Student-Athlete Newsletter which were developed last season, Zillioux is implementing still more programs this season designed to increase academic awareness.

"The coaches at UMaine have been very receptive to my ideas and goals," says Zillioux. "Without their input, Academic Support would never work. Although we have attained many goals in the past two years, we still need to strive beyond. We need to continue to build the academic success which has put UMaine near the top in the Northeast."

With the continued support of a coaching staff dedicated to academics, and the determined guidance of Margaret Zillioux, the University of Maine is confident it will continue the success experienced not only in athletic competitions, but also in the 'academic game.'

The work of Zillioux is a large reason that UMaine's graduation rate for student-athletes is higher than that of the general student body.



Head Coach Joanne Palombo



JOANNE PALOMBO
Head Coach

Joanne Palombo, 28, enters her second season as head coach of the women's basketball program at UMaine. She was named to that position on June 18, 1992 by Michael Ploszek, Director of Athletics, becoming the fourth head coach in the program's 17-year history.

In Palombo's first season as a head coach, she overcame the loss of four seniors, the challenge of a new coaching staff and a difficult schedule, to lead UMaine to its fourth-straight North Atlantic Conference title game. In 1993, she brings her first recruiting class to UMaine, which includes the Players of the Year from both Vermont and Maine.

A native of Brunswick, and the state of Maine's first *Parade Magazine* girl's basketball All-American in 1983, Palombo returns to her home state with high hopes for the future of Black Bear women's basketball.

"The position alone is a tremendous opportunity to establish a long-term commitment to create tradition at a school which has earned national respect," said Palombo. "The fact that I'm returning to my home state is icing on the cake."

Palombo comes to UMaine after serving as an assistant coach at Auburn University since 1988. While at Auburn, the Lady Tigers participated in three of the last five NCAA Final Four tournaments, including a pair of appearances in the national championship game during her tenure. While at Auburn, Palombo had the opportunity to work with two

Olympians in Vickie Orr and Carolyn Jones. In addition, the Lady Tigers established the longest home winning streak in NCAA history at 69 games.

Palombo served as the team's primary recruiter, signing the fourth-ranked recruiting class in 1990-91. She followed that with a 16th ranked recruiting class of six student-athletes in 1991-92.

She also served as the director of the nationally-respected Lady Tiger Basketball Camp.

"We believe Joanne is a perfect fit for the University of Maine," said Ploszek. "She's a person who wants to be at Maine, understands our values and is committed to our high expectations. Her experience, coupled with her Maine roots, makes us look forward to the future with great anticipation."

A 1987 graduate of Northwestern University with a bachelor's degree in political science, Palombo was a four-year letter winner for the Wildcats. She was an All-Big Ten Honorable Mention selection and a first team All-Academic choice her senior season. In 1987, she was instrumental in leading the Wildcats to the second round of the NCAA Tournament.

Upon graduation, she worked in the private sector and served as a part-time assistant coach at Northwestern for a season, before moving to Auburn where she received her master's degree in business administration in 1990.

Palombo is married to Dr. John McCallie, an assistant professor in UMaine's department of agricultural and resource economics.



Head Coach Joanne Palombo and her husband Dr. John McCallie.

The Palombo File

Date & Place of Birth:	Sept. 6, 1965 at Monterey, Calif.
Hobbies:	Swimming, white water rafting, golf
Favorite TV Show:	The Simpsons
Entree for last meal:	Anything Italian
Favorite Color:	Blue
Who had most effect on my life:	Parents, high school coach (Fred Koerber), Joe ChiampI and husband
If I had to choose another profession I would be:	A professor in education
Where I go to escape:	The pool
I wish I knew how to:	Speak a second language



The Black Bear Assistant Coaches



LAMAR BOUTWELL
Assistant Coach



KAY ABRAHAMSON
Assistant Coach

Boutwell enters his second year as an assistant coach on the University of Maine coaching staff.

Before coming to UMaine, Boutwell, 28, served as assistant coach at The Ohio State University. He served as director of the Buckeye Classic Tournament and was involved in all aspects of team travel and on-campus recruiting visits. Before his appointment at OSU, Boutwell handled similar responsibilities including film exchange and academics at Long Beach State.

"Lamar has a tremendous amount of experience at many successful programs," said Palombo. "We share similar philosophies in basketball. He brings to Maine the experience of success along with his enthusiasm and undeniable work ethic. Lamar has an excellent personality and does very well in recruiting."

Boutwell has been involved in USA Basketball on various levels since 1988. Last year, he was a member of the Women's Olympic Basketball Trials administrative staff. In 1991, he was a member of the U.S. Olympic Festival Basketball administrative staff and was also the USA Basketball liaison to the U.S. Junior National team which toured Mexico.

In 1990, he received his bachelor's degree in general studies from Louisiana State University. From 1984-1989, he worked as a student assistant and manager with the women's basketball program in Baton Rouge, La.

Boutwell coordinates the Black Bears' recruiting efforts and works directly with promotions, scheduling and assisting with the Black Bear Summer Camps. On the court, Boutwell works with the guards.

Abrahamson enters her second year as an assistant coach on the University of Maine coaching staff.

Abrahamson, 26, previously served as assistant coach at Duquesne University of the Atlantic-10 Conference in Pittsburgh, Pa. Her duties there included recruiting, floor coaching, pre-season workouts and meal planning. She also worked as a fitness and strength trainer at the YMCA in Pittsburgh. There, she oversaw the facilities and the personalized training of the clientele.

"Kay is a talented young coach with vast playing experience at the highest level," said Palombo. She has a considerable amount of knowledge to offer our program and understands the demands on the student-athletes. In this way, she will be an excellent role-model and recruiter for Maine."

From May to September of 1991, she was an assistant coach/player in the professional women's basketball league in Dunedin, New Zealand. While in New Zealand she directed a boys' and girls' camp and coached a high school girls' team.

Abrahamson played collegiate basketball at both the University of Georgia and University of Iowa. As a freshman at Georgia, she started for the Bulldog team that went to the NCAA Final Four. She earned her bachelor's degree in physical education/sports administration from Iowa in 1990. In 1991, she received her master's in education from Duquesne.

Abrahamson's duties at UMaine include on-court coaching and recruiting of post players, scouting opponents, team travel, weight training and assisting with the summer camps.

The Boutwell File

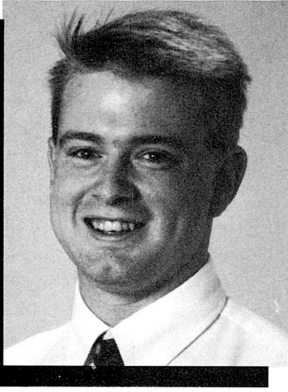
Date & Place of Birth: March 28, 1965 at Greenville, MS
Hobbies: Travelling, cooking
Favorite TV Show: Cheers
Entree for last meal: Fried Shrimp
Favorite Color: Blue
Who had most effect on my life: Parents and Sue Gunter (1980 Olympic Coach)
If I had to choose another profession I would be: In Promotions
Where I go to escape: Walking
I wish I knew how to: Play a musical instrument

The Abrahamson File

Date & Place of Birth: Dec. 23, 1966 at Cedar Rapids, IA
Hobbies: Music, basketball, lifting weights
Favorite TV Show: Martin
Entree for last meal: Pizza
Favorite Color: Black
Who had most effect on my life: Father, Brother, C. Vivian Stringer (Head Coach, Iowa)
If I had to choose another profession I would be: Involved in Music
Where I go to escape: Jogging
I wish I knew how to: Play the piano



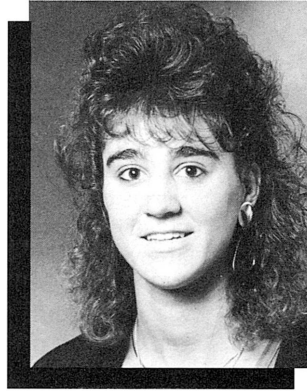
Black Bear Support Staff



JODY BENNER
**Part-Time
Assistant**

"He is very personable and hard working and he also has a clear understanding of the game. He will do a great job working with the wings and point guards." Benner assists in game preparation, scouting opponents and on-court coaching.

Benner, 23, enters his second year with the Black Bear program. Last season, he volunteered after taking a methods of coaching basketball class with the women's basketball coaching staff. Prior to his appointment with the UMaine women, Benner coached in recreational leagues in Wiscasset, Maine. A December 1992 graduate of the University of Maine, Benner is currently taking classes toward his master's in education at UMaine. "Jody is a tremendous addition to our coaching staff," said Palombo.



HEATHER BRIGGS
Student Assistant

to score 1,000 career points. Briggs was named to the North Atlantic Conference second-team her junior year and to the NAC All-Tournament team in her final year. Briggs' primary focus will be game preparation and on-court coaching, but she will assist in all phases of coaching.

Briggs, 22, enters her first year as a student assistant after spending four years as a player for the Black Bears. Briggs finished her final year of eligibility in 1992-93 and will graduate in May of 1994. "Heather has enjoyed a lot of success on the court after playing in four-straight NAC Championships," said Palombo. "I look for her to learn the game from a coach's perspective as well as offer experience to the new players." A standout guard for UMaine, Briggs became the seventh player in the program's history



1993-94 Outlook



Chrissy Strong returns to pace the Black Bears at the point guard position. Strong will captain the team for the second-straight year.

The UMaine women return with eight players from a year ago and boast an impressive group of newcomers. The recruiting class features the *USA Today* Vermont Player of the Year, the State of Maine's Miss Basketball, and two other players over six-foot, four inches tall.

In addition to the new talent, last year's team gelled together at the end of last season by winning five of its last seven games, including two conference playoff upsets. The lone worry entering the 1993 season, is the loss of the team's leading scorer and rebounder from a year ago, Heather Briggs. Expectations for the UMaine Women will once again be high.

Joanne Palombo, in her first season as head coach, faced a demanding task, which included an 0-9 start. After collecting the first win, UMaine was 9-11 the rest of the way, including, 5-2 in the last seven games, five on the road.

Sophomore Stephanie Guidi is UMaine's top returning scorer (11.3 ppg) and rebounder (6.1 rpg). She is the incumbent at the post at 6-0. Junior co-captain Rita Sullivan, third on the team with 5.9 points per game and 4.1 rebounds, is the top returning power forward at 6-0. Five-foot, 11-inch Catherine Gallant adds depth with 4.9 points and 4.5 boards a

game. Cyndi Buetow, a 6-2 senior center can start or come off the bench. She began last season with a career-high 17 points against Boston College.

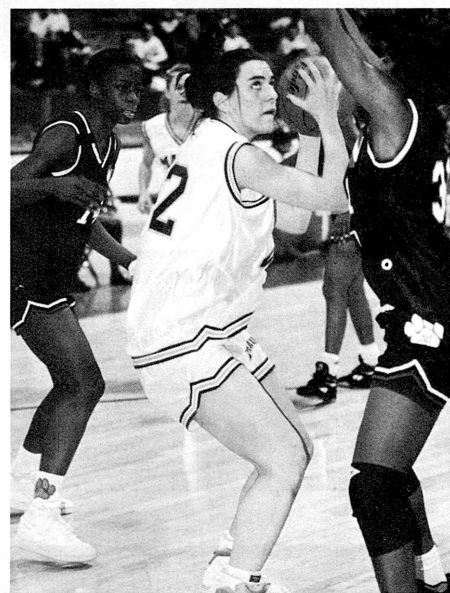
First-year players will not only add depth but challenge for starting positions. Izabella "Izzy" Bachmanek, a 6-5 center from Mississauga, Ontario, and a member of the Canadian Junior National team, is head of the class. Stacey Porrini, a 6-4 center from Bristol, Conn., also gives UMaine size inside. Lori Thomas, a 1,000-point scorer at Winthrop (Mass.) High School and sister of former Black Bear baseball player and current White Sox farmhand Larry Thomas, gives UMaine a solid small forward at 6-1.

The foursome of Chrissy Strong, Seana Dionne, Erin Grealy and Stacia Rustad is solid. A senior co-captain, Strong should backbone the defense and direct the offense from her point guard slot. Strong also nailed 6-27 three-point attempts, and developed a solid outside touch as the season progressed. Her strength is in her leadership, defense and ballhandling. Dionne, UMaine's top returning three-point threat from last season (4.3 ppg), was vital to the UMaine Women's playoff drive with great defense on the opponents' top perimeter threats. Erin Grealy in the past has given UMaine instant offense off the bench with a

steady jumpshot from 17 feet. Rustad in her first year was a pleasant surprise, earning Maine Tip-Off Classic All-Tournament honors three games into her first collegiate season. Rustad showed a soft touch from outside and great determination defensively. She started 16 games last season, the fifth highest total of the team.

Trisha Ripton, a 5-9 guard from Stearns High School in Millinocket, Maine, and Carrie Smith, a 5-7 guard from Oxbow High School in Bradford, Vt., round out Maine's recruiting class. Ripton earned a slew of awards as Dionne's understudy at Stearns, including All-State and Miss Maine Basketball honors. Smith was named *USA Today* Vermont Player of the Year and she is a winner as judged by Oxbow's four-year mark of 87-6 with her in the backcourt. One of the two recruits is expected to step into the backup point guard role that UMaine sorely lacked a year ago.

Once again the UMaine schedule will be demanding. The Black Bears will host two tournaments, one in Orono with Northwestern State University, Army and Long Island and another in Portland with Illinois, Kent State and Georgia State. The UMaine Women also visit the Minnesota Dial Classic with Boise State, Minnesota and Chicago State.



Rita Sullivan will lead the team as the Black Bears' other co-captain in 1993-94.



Meet The Captains



3 CHRISSY STRONG Senior Co-Captain 5-7 Guard Thomaston, Maine

"Chrissy gained valuable experience and confidence last year coming back and performing all season after having a frustrating sophomore year with her knee injury. She has worked very hard this summer and I look for her to score more and have a lot of fun this year."

— Joanne Palombo

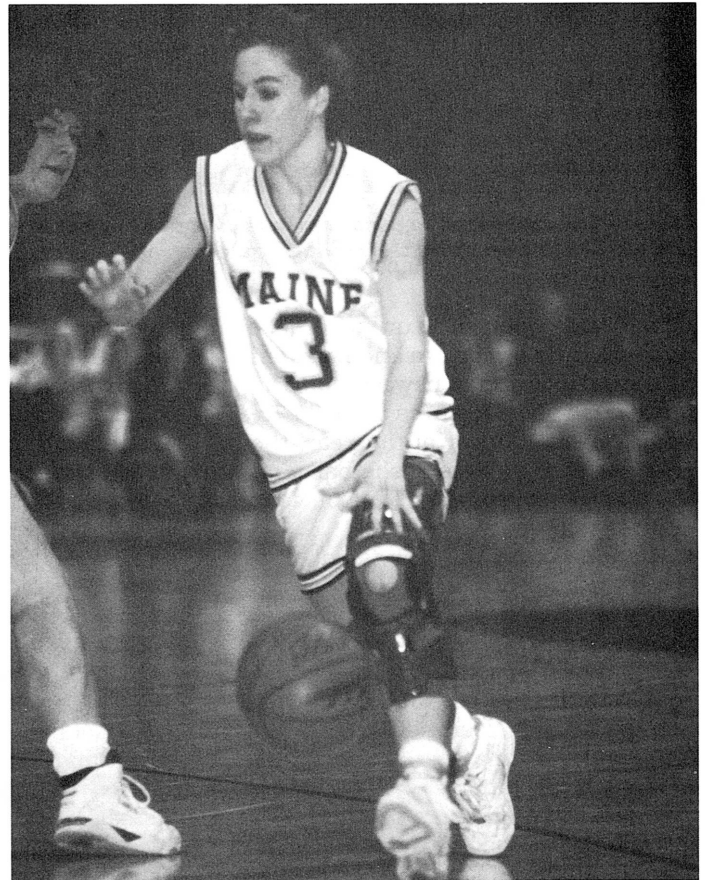
JUNIOR: Only player to start in all 29 games... led the team in assists (141) and steals (36)... and minutes played (989)... ended the season ranked third in the league with 4.9 assists per game... averaged 4.8 points per game from her point guard position... chosen by teammates and coaches as the 1992-93 Co-MVP with Heather Briggs... 1992-93 Coaches Award winner.

SOPHOMORE: Injured during the second game of the season... sat out 18 games... returned to play in the last seven contests of the season... averaged 2.1 points in her 11 contests.

FRESHMAN: Played in all 28 games and started 23... scored a season/career high 15 points in the first game against Vermont... the team's leading rebounder against Boston University, with 11... fell just one assist shy of the record with 13 assists vs. Siena College.

HIGH SCHOOL: Captained coach Dwight Henry's Georges Valley team to the conference championship and Western Maine Class C runner-up position... averaged 22.5 points, 7.4 rebounds, 5.8 assists and 6.0 steals her senior year... 1990 Miss Maine Basketball... team's MVP three seasons... first female to score over 1,000 career points at Georges Valley... named a McDonald's East/West Academic All-Star... a two-year *Bangor Daily News* all-state selection... The *Maine Sunday Telegram's* Female Basketball Player and Female Athlete of the Year in 1990... a Converse All-America and Street & Smith All-America Honorable Mention selection.

PERSONAL: Started on the boys varsity soccer team... a state champion in the 100- and 300-meter hurdles... placed seventh in the nation in the 400-meter hurdles at the 1987 TAC Junior Olympics... brother Bob is a starter on the men's soccer team at UMaine... an English major... born December 24, 1971... the daughter of Robert, Jr. and Vicky Strong.



The Strong File

Place of Birth: Rumford, Maine
Favorite T.V. Show: Donahue
Favorite Color: Coral
Favorite Music: Top 40
Who's had the most influence on me: Family
Heroes: Margaret Chase Smith; George Mitchell
Career Goals: Lawyer

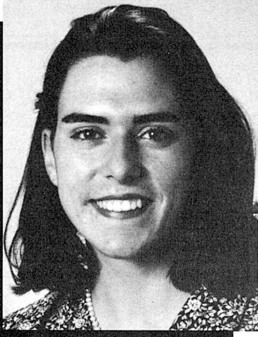
CAREER HIGHS

Points 15 vs. Vermont, 1/26/91
Rebounds 11 vs. Boston University, 1/9/91
Assists 13 vs. Siena, 2/18/91

■ CAREER TOTALS

YEAR	G/GS	FG/FGA	FG%	3FG/FGA	3FG%	FT/FTA	FT%	REB	RPG	PF/D	A	TO	BL	ST	PTS	PPG	MIN
92-93	29/29	50/153	.327	6/27	.222	33/46	.717	127	4.4	76/3	141	98	2	36	139	4.8	989
91-92	11/1	9/29	.310	1/3	.333	4/10	.400	19	1.7	18/0	20	35	1	17	19	1.1	127
90-91	28/23	64/169	.379	0/0	.000	31/40	.775	98	3.5	71/0	104	77	2	33	164	5.9	777
TOTAL	68/53	123/351	.350	7/30	.233	68/96	.708	244	3.6	165/0	265	210	5	86	322	4.7	1893





42 RITA SULLIVAN Junior Co-Captain 6-0 Forward Bangor, Maine

"Rita has really worked hard this summer on her inside and outside games. She returns to the team, more versatile and in the best shape of her career. I am looking forward to watching her game grow. she brings a lot of confidence and poise to the floor."

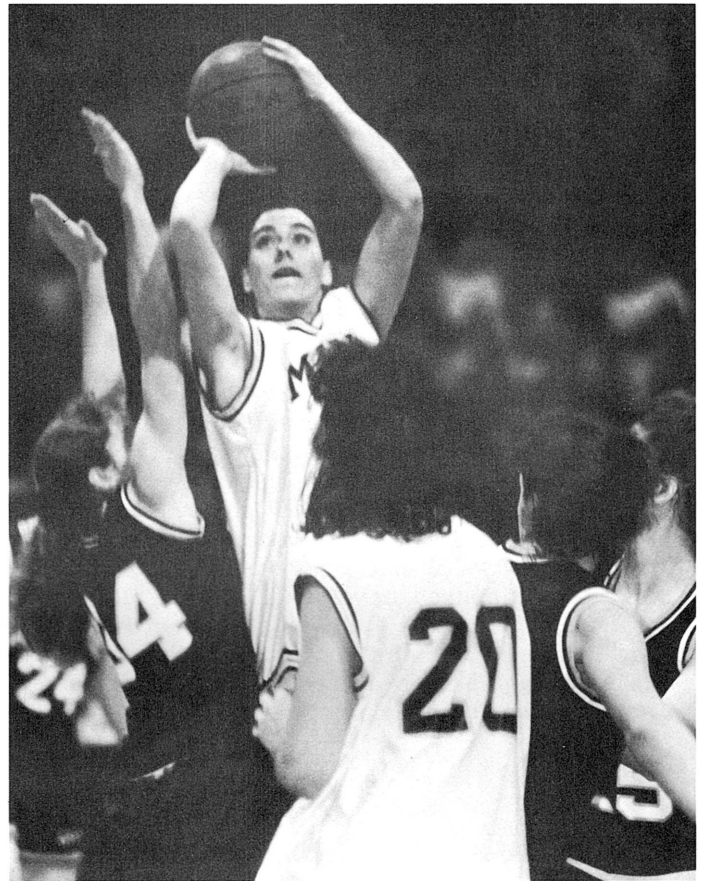
— Joanne Palombo

SOPHOMORE: Played in 28 games, starting 20... shot .480 from the field for second on the team and averaged 5.9 points a game, which was third best.

FRESHMAN: Played in 13 contests... averaged 1.0 points and 0.9 rebounds per game... averaged 7.1 minutes per game.

HIGH SCHOOL: Contributed 18.5 points and grabbed 10.5 rebounds per game... added 3.2 steals per contest as well... *Bangor Daily News* All-State (first team)... *Maine Sunday Telegram* Class of the State Team... McDonald's East-West All-Star... McDonald's Academic All-State (4.0 GPA)... *U.S.A. Today* Maine Player of the Year Honorable Mention... Big East All-Conference Player... Big East Player of the Year... named Miss Maine Basketball in 1991.

PERSONAL: Captained the Bangor High field hockey team in 1991... named field hockey All-State in 1991... a member of the NAC Academic Honor Roll in 1991, 1992 and 1993... a journalism major enrolled in the College of Arts and Sciences... born Dec. 19, 1972... the daughter of Dan and Marguerita Sullivan.



The Sullivan File

Place of Birth:	Anchorage, Alaska
Favorite T.V. Show:	Cheers
Favorite Color:	Red
Favorite Music:	Alternative, Classical, Jazz
Who's had the most influence on me:	Brothers/sisters
Heroes:	Parents
Career Goals:	Editor of a magazine

CAREER HIGHS

Points	15 vs. Delaware, 2/26/93
Rebounds	10 vs. Delaware, 2/26/93
Assists	2 vs. Boston Univ., 1/28/93

■ CAREER TOTALS

YEAR	G/GS	FG/FGA	FG%	3FG/FGA	3FG%	FT/FTA	FT%	REB	RPG	PF/D	A	TO	BL	ST	PTS	PPG	MIN
92-93	28/20	60/125	.480	0/0	.000	45/68	.662	114	4.1	59/2	11	56	4	14	165	5.9	594
91-92	13/1	3/16	.188	0/0	.000	7/10	.700	12	0.9	10/0	2	12	1	5	13	1.0	92
TOTAL	42/21	63/141	.447	0/0	.000	52/78	.667	126	3.0	69/2	13	68	5	19	178	4.2	686



Meet The Black Bears



54 CYNDI BUETOW

Senior

6-2 Center

Cologne, Minn.

"Cyndi has gained a great deal of experience behind her. She has had the opportunity to play a lot of minutes and serve as a role player. She has enjoyed success in both positions and I look for her to capitalize on her experiences and have a great year."
 — Joanne Palombo

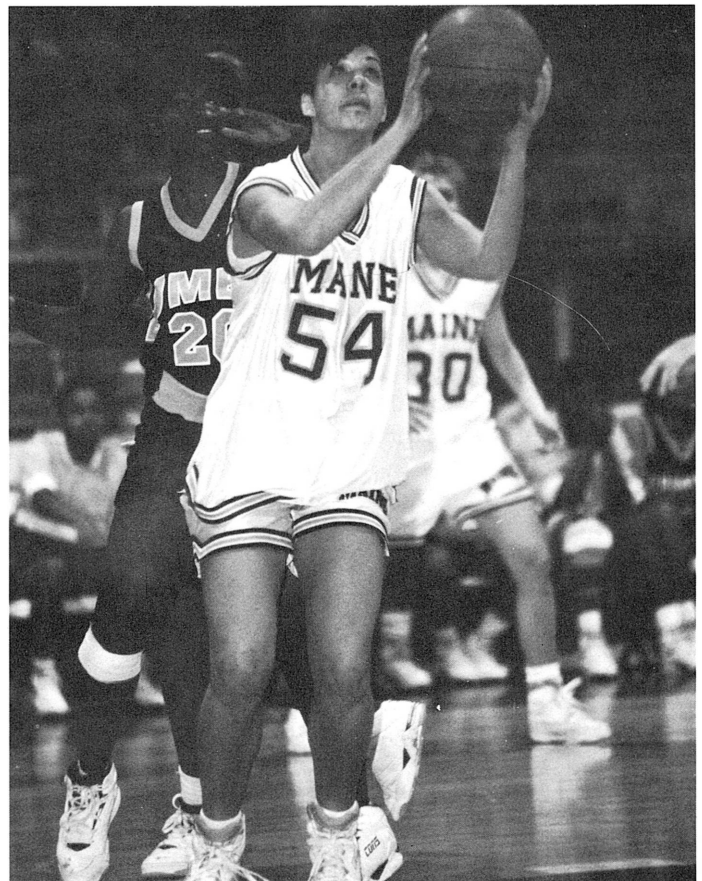
JUNIOR: Started nine games while playing in 26... began the 1992-93 season with a strong career-high 17 points against Boston College... also tallied 13 points against nationally-ranked Vermont, Jan. 21.

SOPHOMORE: Played in all 29 games while starting seven... contributed 3.8 points and 2.5 rebounds per contest... played the most minutes of any non-starter... scored a season-high 14 points against Holy Cross... also grabbed a career-high eight rebounds in the first Drexel game.

FRESHMAN: Played in all but two games in the 1990-91 season... started four contests... averaged 2.0 points and 1.7 rebounds per contest... had a career-high five steals against Drake.

HIGH SCHOOL: Played for coach Mark Puditzke at Waconia High School... named Best Defensive Player her sophomore year... a two-year Wright County Conference All-Conference selection... named the Most Valuable Player in the conference her senior year... Waconia High School's all-time leading rebounder with 719... also posted career totals of 1,036 points, 303 assists and 239 steals.

PERSONAL: Captained the volleyball and softball teams in high school... named All-State as a pitcher for the softball team... a speech communication/public relations major, enrolled in the College of Sciences... born December 22, 1971... the daughter of Ralph and Carol Buetow.



The Buetow File

Place of Birth: Waconia, Minn.
Favorite T.V. Show: Oprah
Favorite Color: Green
Favorite Music: Anything
Who's had the most influence on me: Family
Heroes: Mom, Dad and Uncle Earl
Career Goals: High School Teacher/Counselor

	CAREER HIGHS
Points	17 vs. Boston College, 12/1/92
Rebounds	8 vs. Drexel, 1/17/91
Steals	5 vs. Drake, 12/8/90

■ CAREER TOTALS

YEAR	G/GS	FG/FGA	FG%	3FG/FGA	3FG%	FT/FTA	FT%	REB	RPG	PF/D	A	TO	BL	ST	PTS	PPG	MIN
92-93	26/9	29/88	.330	0/0	.000	19/37	.514	53	2.0	38/0	15	32	2	13	77	3.0	380
91-92	29/7	50/120	.417	0/0	.000	11/30	.367	73	2.5	66/4	18	49	5	12	111	3.8	430
90-91	26/4	22/62	.355	0/0	.000	8/14	.571	45	1.6	30/0	3	21	5	13	52	2.0	251
TOTAL	81/20	101/270	.374	0/0	.000	38/81	.469	171	2.1	134/4	36	102	12	38	240	3.0	1061





33 SEANA DIONNE

Junior

5-7 Guard

Millinocket, Maine

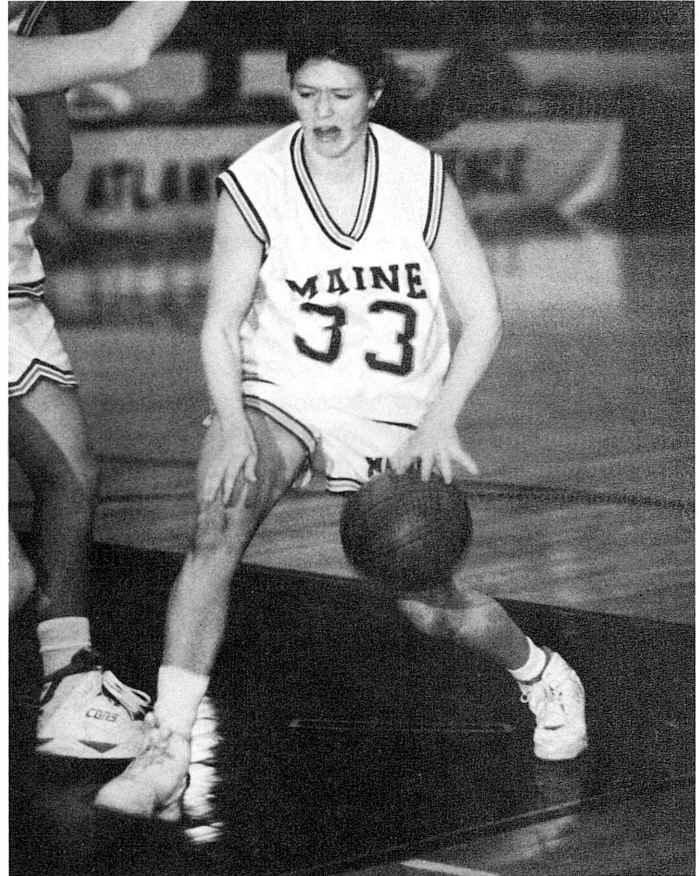
"Seana has enjoyed her most successful preseason. She is in great physical shape. Her quickness and her passing skills make her very valuable to the team. She is also our defensive specialist."
 — Joanne Palombo

SOPHOMORE: Her defense was vital to UMaine's drive to the NAC Championship game... while drawing the opponent's best offensive players, she was selected by her teammates and coaches as Best Defensive Player... scored a career-high 20 points Feb. 13 versus Boston University, the only time she reached double figures in 1992-93... one of Maine's top returning three-point threats with eight trifectas last season.

FRESHMAN: Played in 18 games... added 3.1 points per game before breaking a bone in her hand during a practice... the injury forced her to miss the last seven games of the season.

HIGH SCHOOL: Played for coach Gerald Burleigh at Stearns High School... captained her junior and senior seasons... contributed 17.5 points, five assists, and seven rebounds per game at Stearns... *Bangor Daily News* All-Tourney Team--Class A... *Bangor Daily News* all-state (first team)... *Maine Sunday Telegram* Class of the State team... *Maine Sunday Telegram* Class A team... Big East Conference All-Star Team... *USA Today* Honorable Mention Player of the Year... Maine Gatorade Circle of Champions Player of the Year.

PERSONAL: Also played field hockey and softball ... UMaine Scholar-Athlete Award winner in 1992-93... NAC Academic Honor Roll in 1992 and 1993... an accounting major enrolled in the College of Business... born Sept. 17, 1973... the daughter of Thomas and Carol Dionne.



The Dionne File

Place of Birth: Millinocket, Maine
Favorite T.V. Show: Melrose Place
Favorite Color: Black
Favorite Music: Dance, Pop, Alternative
Who's had the most influence on me: God
Heroes: Parents and Family
Career Goals: Certified Public Accountant

CAREER HIGHS

Points 20 vs. Boston University, 2/13/93
Rebounds 7 vs. Hartford, 2/18/93
Assists 5 vs. New Hampshire, 3/6/93

■ CAREER TOTALS

YEAR	G/GS	FG/FGA	FG%	3FG/FGA	3FG%	FT/FTA	FT%	REB	RPG	PF/D	A	TO	BL	ST	PTS	PPG	MIN
92-93	29/14	46/138	.333	8/36	.222	26/42	.619	52	1.8	45/1	36	65	0	23	126	4.3	543
91-92	18/7	20/58	.345	1/5	.200	15/24	.625	32	1.8	29/0	20	22	.4	7	56	3.1	296
TOTAL	47/21	66/196	.337	9/41	.220	41/66	.621	84	1.8	74/1	56	87	4	30	182	2.2	839



Meet The Black Bears



15 CATHERINE GALLANT

Sophomore

5-11 Forward

Pincourt, Quebec

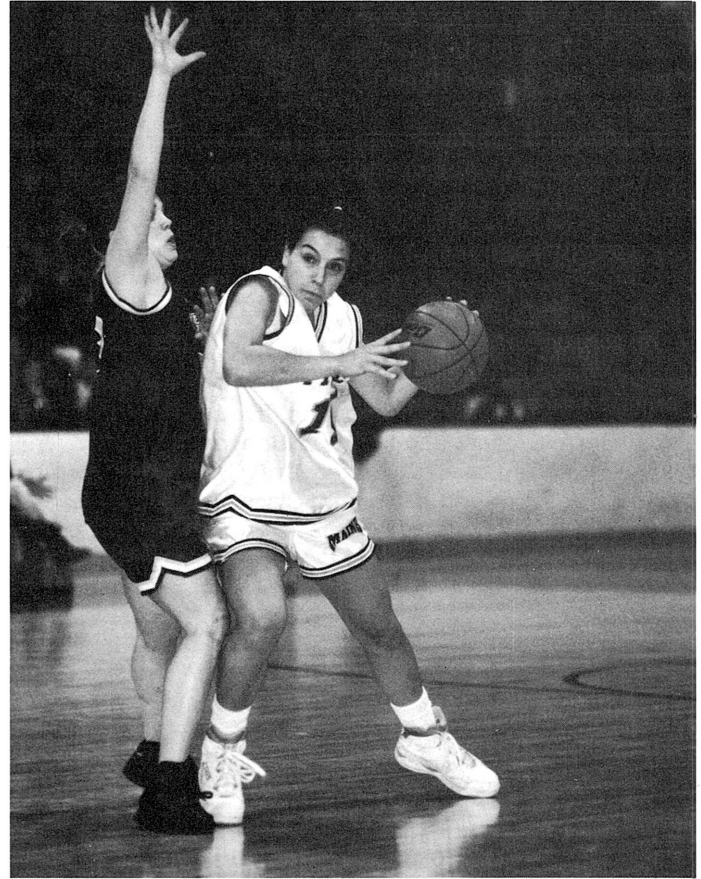
"Catherine has undertaken a complete transition over the summer. We have moved her to the small forward position and she has done a great job making the adjustment. She is an incredible athlete and she will be able to use her natural abilities better this year."

— Joanne Palombo

FRESHMAN: Ranked third on the team with 4.5 rebounds a game in 1992-93... selected by teammates and coaches for Sixth Player Award... scored in double figures three times, including a career-high 14 points vs. Maryland-Eastern Shore Feb. 24... career-high nine rebounds and 12 points in her collegiate debut vs. Boston College Dec. 1... nine rebounds against nationally-ranked Mississippi in the Maine Tip-Off Classic... seven or more rebounds in nine games.

HIGH SCHOOL: Graduated from Vaudreuil Catholic High School in 1989... Graduated from John Abbott CEJEP College in 1992... Named Federation Quebec College All-Star from 1989-92... a member of the Canadian Junior National Team in 1990... a 1990-91 CEJEP College All-Star... a 1990-91 Junior National Tournament All-Star (Quebec Provincial Team)... the leading scorer in the Quebec Triple A College League in 1991 with 19.1 points per game... John Abbott College Team Captain from 1990-92... MVP for John Abbott in 1992... 1992 Athlete of the Year at John Abbott... scored 1,220 points, averaging 16 ppg over her three year career... pulled down 1,003 rebounds for an average of 13 rpg in three years... John Abbott College's All-Time Leading Rebounder.

PERSONAL: A physical education major... born April 12, 1972... the daughter of Raymond and Mary Gallant.



The Gallant File

Place of Birth: Montreal, Canada
Favorite T.V. Show: The Simpsons
Favorite Color: Blue
Favorite Music: Pop, dance
Who's had the most influence on me: Family
Heroes: My friends
Career Goals: Physical Education Teacher

CAREER HIGHS

Points 14 vs. Maryland-ES, 2/24/93
Rebounds 9 vs. Boston College, 12/1/92
 vs. Mississippi, 12/6/92
Assists 4 vs. Boston Univ., 2/13/93

■ CAREER TOTALS

YEAR	G/GS	FG/FGA	FG%	3FG/FGA	3FG%	FT/FTA	FT%	REB	RPG	PF/D	A	TO	BL	ST	PTS	PPG	MIN
92-93	29/4	52/150	.347	0/0	.000	38/59	.644	131	4.5	32/0	18	47	4	22	142	4.9	577
TOTAL	29/4	52/150	.347	0/0	.000	38/59	.644	131	4.5	32/0	18	47	4	22	142	4.9	577





10 ERIN GREALY

Junior

5-9 Guard

Medford, Mass.

"Erin is coming off a very successful summer where she has gained more consistency in her shot. She has been a tremendous spark off the bench in many games for us, and she brings a lot of confidence and experience to the team."

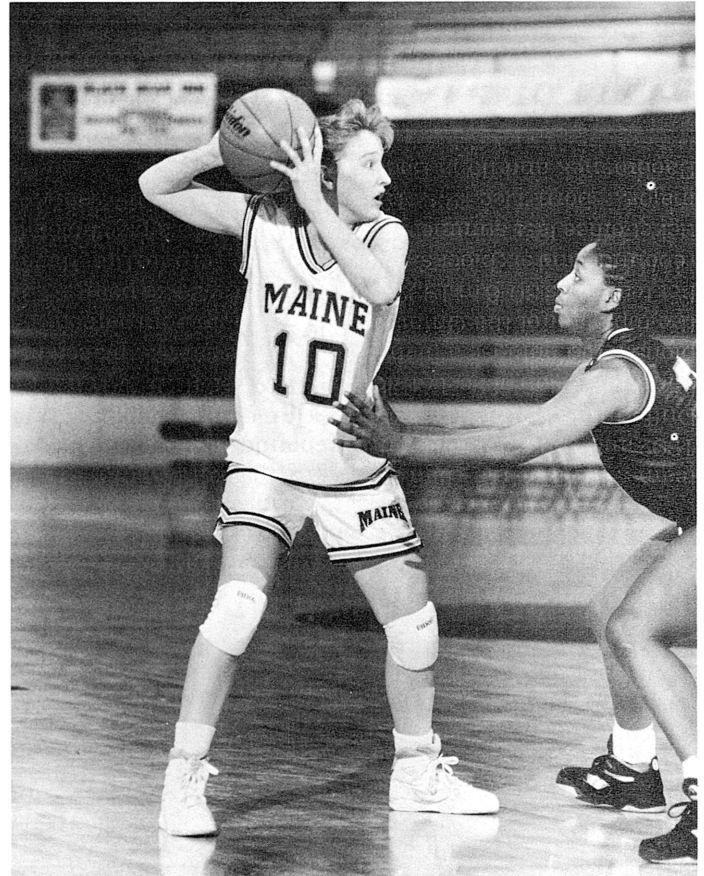
— Joanne Palombo

SOPHOMORE: Played in 28 of 29 games, missing one due to chicken pox... started the first four games of the season... career-high 19 points vs. Vermont Feb. 20, when she shot 8-13 and 2-2 from three-point range... scored in double figures five times, including a stretch of four of five games near the close of the season... shot 23-44, .523 in that time span.

FRESHMAN: Played in 18 games... averaged 3.1 points per contest... was given the team's Sixth Player Award by the coaching staff.

HIGH SCHOOL: Played for coach Brian Harris at Medford High School... was a captain her junior and senior seasons... averaged 24 points, 10 rebounds, six assists, and four steals per contest... was named Medford High's Player of the Year... the first female at Medford to score over 1,000 points... broke the school record with 1,368 career points... the scoring leader in Eastern Massachusetts... named Catholic Central League All-Star for four years in a row... Was the league's MVP... named to the *Boston Herald* Dream Team... named one of the top 40 players in Massachusetts... a member of the AAU/Junior Olympic Team.

PERSONAL: Also played volleyball and softball... a member of the NAC Academic Honor Roll in 1992 and 1993... UMaine Scholar-Athlete Award winner in 1992-93... a zoology major enrolled in the College of Sciences... born June 1, 1973... the daughter of Thomas and Ann Grealy.



The Grealy File

Place of Birth: Boston, Mass.
Favorite T.V. Show: 20/20
Favorite Color: Green
Favorite Music: Alternative, House music
Who's had the most influence on me: Mariann (Twin sis)
Heroes: Corey Everson, Joan Benoit-Samuels
Career Goals: Trauma Surgeon

CAREER HIGHS

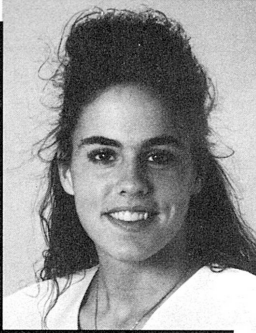
Points 19 vs. Vermont, 2/20/93
Rebounds 7 vs. Drexel, 1/17/93
Assists 3 vs. Canisius, 1/3/92

■ CAREER TOTALS

YEAR	G/GS	FG/FGA	FG%	3FG/FGA	3FG%	FT/FTA	FT%	REB	RPG	PF/D	A	TO	BL	ST	PTS	PPG	MIN
92-93	28/4	48/135	.356	3/8	.375	33/50	.660	49	1.8	40/1	13	41	0	12	132	4.7	395
91-92	18/0	19/64	.297	0/1	.000	18/26	.692	25	1.4	23/0	16	22	1	6	56	3.1	172
TOTAL	46/4	66/199	.332	3/9	.333	51/76	.671	74	1.6	63/1	29	63	1	18	188	4.1	567



Meet The Black Bears



55 STEPHANIE GUIDI

Sophomore

6-0 Forward

Stormville, N.Y.

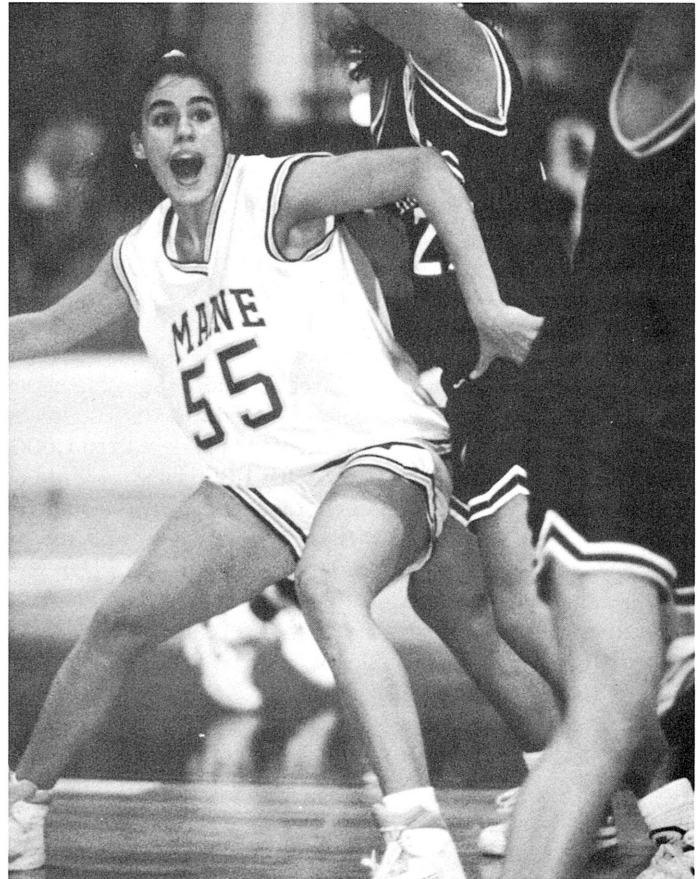
"Steph has to be one of the toughest competitors I have ever had the pleasure of coaching. She has worked very hard on her inside and outside game and returns to the team in great physical shape. With an added maturity to her game, there is no doubt that she will be a major contributor this year."

— Joanne Palombo

FRESHMAN: Made the greatest impression of any first-year player since Rachel Bouchard... second on the team in scoring (11.3 ppg) and rebounding (6.1 rpg)... selected to the NAC All-Rookie team and Rookie of the Week on three occasions... also named ECAC Rookie of the Week (selected from over 70 teams) once... chosen to three tournament all-star teams... NAC All-Tournament, Maine Tip-Off and Bell Atlantic Holiday Classic All-Tournament... led the conference with a .824 free-throw percentage... was a perfect 10-10 from the line vs. Delaware Jan. 17 to tie a UMaine school record... scored in double figures 16 times and recorded six double-doubles, including two in postseason play.

HIGH SCHOOL: Played for coach Ed Pescatore at Carmel High School... a captain both her junior and senior years... averaged 15.6 points and 13.9 rebounds per game... scored 1,125 career points... a member of the three-time Section I runner-up team... named First Team All-Westchester County in 1991 and 1992... All-Section three times... two-time All-State selection... Carmel High School's Most Valuable Player in 1991 and 1992.

PERSONAL: Also ran track... has a sister who plays for Manhattan College... an elementary education major... born October 11, 1974... the daughter of Larry and Pat Guidi.



The Guidi File

Place of Birth: Wappingers Falls, N.Y.
Favorite T.V. Show: Wheel of Fortune
Favorite Color: Blue
Favorite Music: Dance Music
Who's had the most influence on me: Family
Heroes: Sister, Mimi; Brother, Tony
Career Goals: Kindergarten teacher

CAREER HIGHS

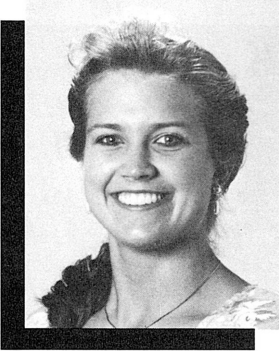
Points 27 vs. Florida Int'l., 12/5/92
Rebounds 16 vs. Northeastern, 3/12/93
 vs. Mississippi, 12/6/92
Assists 6 vs. Central Conn., 2/4/93

■ CAREER TOTALS

YEAR	G/GS	FG/FGA	FG%	3FG/FGA	3FG%	FT/FTA	FT%	REB	RPG	PF/D	A	TO	BL	ST	PTS	PPG	MIN
92-93	29/25	119/224	.488	0/0	.000	89/108	.824	176	6.1	105-10	23	77	7	21	327	11.3	738
TOTAL	29/25	119/224	.488	0/0	.000	89/108	.824	176	6.1	105-10	23	77	7	21	327	11.3	738



Meet The Black Bears



30 STACIA RUSTAD

Sophomore

5-7 Guard

Kenai, Alaska

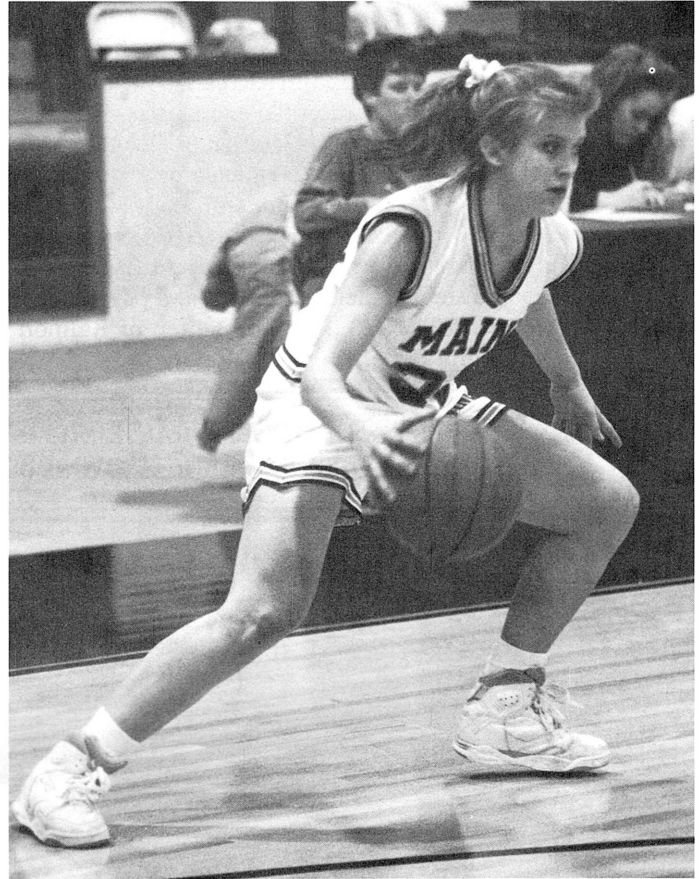
"Stacia has returned to the team on a mission. After an up and down freshman year, she is determined to bring consistent shooting and scoring to the team. She has made great strides this summer and her confidence is evident. Her hard work will certainly pay off."

— Joanne Palombo

FRESHMAN: Tallied 25 points in two games, earning Maine Tip-Off Classic All-Tournament honors... scored in double figures eight times, including a career-high 17 vs. Valparaiso Jan. 3... also recorded career best in rebounds (eight) and assists (seven) vs. Valparaiso... her 5.2 points per game ranked fourth on the team... her 612 minutes played was third highest on the squad.

HIGH SCHOOL: Played for coach Craig Jung at Kenai Central High School... captained the team both her junior and senior seasons... averaged 22.9 points, 7.0 rebounds and 5.0 assists in 1992... named State Sportswriters Large Schools Player of the Year in 1992... named First Team All-State in 1991 and 1992... named *Clarion* (local newspaper) MVP in 1992... Conference MVP in region three in 1992... Region 3-District 4A All-Conference, 1990, 1991 and 1992 ... 1991 4A state champion... 1992 4A semi-finalist in State Tournament... first female at Kenai Central to score over 1,000 points... named Most Valuable Player three times... named Kenai's Female Athlete of the Year... 1992 *USA Today* Player of the Year in Alaska... named Converse All-American.

PERSONAL: Captained the volleyball and track teams... also ran cross-country, placing in the top-ten in the state every year... an education major... born July 29, 1974... the daughter of Ron and Elaine Rustad.



The Rustad File

Place of Birth: Soldotna, Alaska
Favorite T.V. Show: Family Matters
Favorite Color: Red
Favorite Music: Pop Music and Country
Who's had the most influence on me: Brother, Shawn
Heroes: Florence Griffith-Joyner
Career Goals: Basketball Coach at Kenai High School

CAREER HIGHS

Points 17 vs. Valparaiso, 1/3/93
Rebounds 8 vs. Valparaiso, 1/3/93
Assists 7 vs. Valparaiso, 1/3/93

■ CAREER TOTALS

YEAR	G/GS	FG/FGA	FG%	3FG/FGA	3FG%	FT/FTA	FT%	REB	RPG	PF/D	A	TO	BL	ST	PTS	PPG	MIN
92-93	27/16	59/163	.362	3/16	.188	19/31	.613	72	2.7	16/0	30	46	1	23	140	5.2	612
TOTAL	27/16	59/163	.362	3/16	.188	19/31	.613	72	2.7	16/0	30	46	1	23	140	5.2	612



Meet The Newcomers



13 IZABELLA BACHMANEK

Freshman

6-5 Center

Mississauga, Ontario

A two-year *Toronto Star* All-Star and member of the 1992 summer Canadian Junior National team... St. Martins High School basketball MVP in 1991, 1992 and 1993... was a team captain as a senior... four-year Dufferin-Peel Athletic Association (DPAA) league champions and Region of Peel Athletic Association (ROPAA) champions... did not lose a high school league game... placed in the top eight of the Ontario Championship Tournament... her team was 30-6 in 1992-93... she averaged 25 points, 19 rebounds and six blocks... worked for the Toronto Blue Jays ticket office last summer... nicknamed Izzy... a psychology major... born Dec. 23, 1973... the daughter of Kalmon Bachmanek and Ilona Bede.

The Bachmanek File

Place of Birth:	Winnipeg, Manitoba CANADA
Favorite T.V. Show:	Martin
Favorite Color:	Purple
Favorite Music:	Everything
Who's had the most influence on me:	Club team coach, Bill Butler and mother
Heroes:	Merilyn Lange (Canada National Team)
Career Goals:	Sports Psychologist

"Izzy has a very smooth shooting touch. She is very versatile for her size and she will have the opportunity to play both inside and outside this year." — Joanne Palombo



32 STACEY PORRINI

Freshman

6-4 Center

Bristol, Conn.

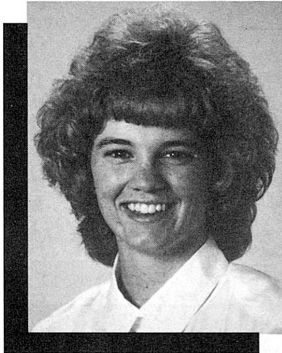
Captained the Bristol Central High School team in 1993... averaged 17 points, 21 rebounds and six blocks a game... All-Conference in swimming (four years), basketball (two years) and track (two years)... second team All-State in basketball... set the city record for rebounds with 1,032 and blocked 273 shots... earned the Air Force Scholar-Athlete, Reiche Scholar-Athlete and Matt Service Award in high school... an elementary education major... born Dec. 1, 1975... the daughter of John and Deborah Porrini.

The Porrini File

Place of Birth:	Bristol, Conn.
Favorite T.V. Show:	Seinfeld
Favorite Color:	Navy Blue
Favorite Music:	U2, Billy Joel
Who's had the most influence on me:	Parents
Heroes:	Michael Jordan, Goofy
Career Goals:	Teacher of special needs children

"Stacey is the strongest freshman physically that I have ever coached. Her size and strength will help her make the transition to Division I ball very smooth." — Joanne Palombo





34 TRISHA RIPTON

Freshman
5-9 Guard
Millinocket, Maine

A three-sport all-state athlete from Stearns High School... she captained her team as a sophomore and senior... Stearns won

the conference championship in 1991, 1992 and 1993... Eastern Maine runner-up in 1991 and 1992... Big East Conference leading scorer and All-Star from 1990-93... Big East MVP as a junior and senior... *Bangor Daily News* Class A All-Tourney 1991, 1992 and 1993 and first team All-Maine 1992 and 1993... *Maine Sunday Telegram* Class of the State and All-State Teams in 1992 and 1993... all-state in soccer in 1990 and softball in 1992... major is undecided... born Nov. 4, 1974... the daughter of Philip and Brenda Ripton.

The Ripton File

Place of Birth:	Bangor, Maine
Favorite T.V. Show:	Guiding Light
Favorite Color:	Blue
Favorite Music:	Country
Who's had the most influence on me:	Mom and Dad
Heroes:	Larry Bird and Cheryl Miller
Career Goals:	Coach/Professional player

"Trisha brings some very good basketball skills to the team. Once she makes the transition physically, she will be able to contribute effectively." — Joanne Palombo



24 CARRIE SMITH

Freshman
5-7 Guard
Bradford, Vt.

A *USA Today*, Gatorade Circle of Champions and Miss Basketball for the State of Vermont... also named Burlington *Free*

Press and District Player of the Year... can play the point or the shooting guard positions... averaged 18.7 points, 5.0 rebounds and 5.0 assists per game... she started as a freshman and her Oxbow High School team coached by Mona Garone played in the state championship each of the last four seasons... Oxbow compiled an 87-6 four-year mark, winning state titles in 1991 and 1993... she was captain and team MVP as a senior... a physical education major... born Dec. 30, 1975... the daughter of Steven and Patti Smith.

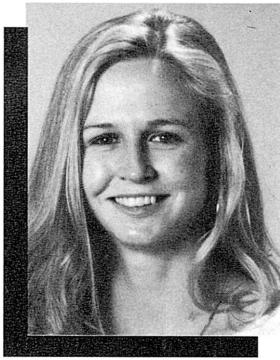
The Smith File

Place of Birth:	Woodsville, N.H.
Favorite T.V. Show:	The Real World (MTV)
Favorite Color:	Blue
Favorite Music:	Rap and Country
Who's had the most influence on me:	Father and Mother
Heroes:	Michael Jordan
Career Goals:	Live long and make money

"Carrie is a very steady and poised player. She has a very nice shooting touch and she looks to score. She is making the transition to Division I very well." — Joanne Palombo



Meet The Newcomers



12 Kelly Stubbs Freshman 5-7 Guard Sherman Mills, Maine

A two-year captain for Coach Terry Duffy at Katahdin High School... participated in the

1993 McDonald's All-Star Classic... an honorable mention All-Maine choice... an All-Tournament selection after leading Katahdin to the Eastern Maine Class "D" Tournament... an All-New England selection in soccer... also nominated for All-America honors in that sport... the Maine Class "D" Player of the Year in 1992... a health, physical education and recreation major... born Nov. 20, 1974... the daughter of Kevin and Paulette Stubbs.

The Stubbs File

Place of Birth:	Houlton, Maine
Favorite T.V. Show:	none
Favorite Color:	Red
Favorite Music:	Dance Music
Who's had the most influence on me:	My mother
Heroes:	Carin Jennings
Career Goals:	To become a physical therapist

"Kelly is a very natural athlete and a very hard worker. She has improved every day and her desire to play at the Division I level is very evident." — Joanne Palombo



11 LORI THOMAS Freshman 6-1 Forward Winthrop, Mass.

Winthrop High School's second leading all-time scorer with 1,076 points, including over 400 as a senior (17.8 ppg)... team was runner-up in

the state finals with a 25-1 mark... won the Northeastern Conference Championship twice, and the Northern and Eastern Massachusetts Championships before falling in the state championship at the Boston Garden... a three-time conference All-Star, two-time *Lynn Item* All-Star... conference MVP, *Boston Globe* and *Boston Herald* All-Scholastic as a senior... her brother Larry, pitched for the University of Maine and now hurls in the Chicago White Sox organization... a physical education major... born Nov. 5, 1975... the daughter of Larry, Sr. and Janice Thomas.

The Thomas File

Place of Birth:	Meadow Brook, Pa.
Favorite T.V. Show:	Martin
Favorite Color:	Purple
Favorite Music:	Hip-Hop
Who's had the most influence on me:	Family
Heroes:	Brother, Larry
Career Goals:	Open spa called "Thomas' Takeaway"

"Lori has some very natural abilities as an athlete. She will have to improve her physical strength significantly in order to use her skills effectively." — Joanne Palombo



1993-94 Black Bear Numerical Roster

No.	Player	Cl.	Ht.	Pos.	Previous School/ Hometown
3	Chrissy Strong	Sr.	5-7	G	Georges Valley HS/ Thomaston, Maine
10	Erin Grealy	Jr.	5-9	G	Medford HS/ Medford, Mass.
11	Lori Thomas	Fr.	6-1	F	Winthrop HS/Winthrop, Mass.
12	Kelly Stubbs	Fr.	5-7	G	Katahdin HS/ Sherman Mills, Maine
13	Izabella Bachmanek	Fr.	6-5	C	St. Martin HS/ Mississauga, Ontario
15	Catherine Gallant	So.	5-11	F	John Abbot CEJEP/ Pincourt, Quebec
24	Carrie Smith	Fr.	5-7	G	Oxbow HS/ Bradford, Vt.
30	Stacia Rustad	So.	5-7	G	Kenai Central HS/ Kenai, Alaska
32	Stacey Porrini	Fr.	6-4	C	Bristol Central HS/ Bristol, Conn.
33	Seana Dionne	Jr.	5-7	G	Stearns HS/ Millinocket, Maine
34	Trisha Ripton	Fr.	5-9	G	Stearns HS/ Millinocket, Maine
42	Rita Sullivan	Jr.	6-0	F	Bangor HS/ Bangor, Maine
54	Cyndi Buetow	Sr.	6-2	C	Waconia HS/ Cologne, Minn.
55	Stephanie Guidi	So.	6-0	F	Carmel HS/ Stormville, N.Y.

Head Coach: Joanne Palombo (Northwestern, 1987)
Assistant Coaches: Lamar Boutwell (Louisiana State, 1990)
 Kay Abrahamson (Iowa, 1990)

STARTERS RETURNING

Name	Cl	Pos	Ht	PPG	RPG	APG
Stephanie Guidi	So.	F	6-0	11.3	6.1	1.3
Rita Sullivan	Jr.	F	6-0	5.2	2.7	0.4
Chrissy Strong	Sr.	G	5-7	4.8	4.4	4.9
Seana Dionne	Jr.	G	5-7	4.3	1.8	1.3

Other Returning Players

Name	Cl	Pos	Ht	PPG	RPG	APG
Stacia Rustad	So.	G	5-7	5.1	2.7	1.6
Catherine Gallant	So.	F	5-11	4.9	4.5	0.6
Erin Grealy	Jr.	G	5-9	4.7	1.8	0.4
Cyndi Buetow	Sr.	C	6-2	3.0	2.0	0.5

Newcomers

Name	Cl	Pos	Ht
Izabella Bachmanek	Fr.	C	6-5
Stacey Porrini	Fr.	C	6-4
Trisha Ripton	Fr.	G	5-9
Carrie Smith	Fr.	G	5-7
Kelly Stubbs	Fr.	G	5-7
Lori Thomas	Fr.	F	6-1

Players Not Returning

Name	Pos	Ht	PPG	RPG	APG
Heather Briggs	F	5-10	12.7	6.2	1.7
Katti Towle	G	5-4	0.8	0.9	0.4

UMAINE BY CLASS

Seniors (2) Buetow Strong	Juniors (3) Dionne Grealy Sullivan
Sophomores (3) Gallant Guidi Rustad	Freshmen (6) Bachmanek Porrini Ripton Smith Stubbs Thomas

UMAINE BY POSITION

Centers (3) Bachmanek Buetow Porrini	Forwards (4) Gallant Guidi Sullivan Thomas
Guards (7) Dionne Ripton Strong Stubbs	Grealy Rustad Smith



1992-93 UMaine Women's Basketball Statistics

9-20 Overall (4-10 NAC): Home 4-8; Away 4-10; Neutral 1-2

Player	G/GS	FG/FGA	PCT	3FG/3FGA	PCT	FT/FTA	PCT	REB	RPG	PF-D	A	TO	BL	ST	TP	AVG	MIN
Briggs	29/24	139/381	.365	42/104	.404	48/77	.623	181	6.2	76-4	50	81	3	27	368	12.7	862
Guidi	29/25	119/224	.488	0/0	.000	89/108	.824	176	6.1	105-10	23	77	7	21	327	11.3	738
Sullivan	28/20	60/125	.480	0/0	.000	45/68	.662	114	4.1	59-2	11	56	4	14	165	5.9	594
Rustad	27/16	59/163	.362	3/16	.188	19/31	.613	72	2.7	16-0	30	46	1	23	140	5.2	612
Gallant	29/4	52/150	.347	0/0	.000	38/59	.644	141	4.5	32-0	18	47	4	22	142	4.9	577
Grealy	28/4	48/135	.356	3/8	.375	33/50	.660	49	1.8	40-1	13	41	0	12	132	4.7	395
Strong	29/29	50/153	.327	6/27	.222	33/46	.717	127	4.4	76-3	141	98	2	36	139	4.8	989
Dionne	29/14	46/138	.333	8/36	.222	26/42	.619	52	1.8	45-1	36	65	0	23	126	4.3	543
Buetow	26/9	29/88	.330	0/0	.000	19/37	.514	53	2.0	38-0	15	32	2	13	77	3.0	380
Philbrick	3/0	1/4	.250	0/0	.000	3/4	.750	1	0.3	1-0	1	1	0	0	5	1.7	15
Towle	16/0	4/23	.174	1/5	.200	4/6	.667	15	0.9	13-0	13	19	0	6	13	0.8	145
UMAINE	29/29	607/1604	.378	63/196	.321	357/528	.676	1104	38.1	502-21	351	563	23	197	1634	56.3	5850
OPPON.	29/29	688/1658	.415	76/267	.285	349/508	.687	1068	36.8	472-8	421	484	108	251	1801	62.1	5850

1992-93 UMaine Women's Basketball Results

Me	Opponent	Score	Att.	Top Scorer	Top Rebounders	Most Assists	3-Pt.FG's
65	Boston College	80	380	Buetow, 17	Briggs, 10	Seven with 1	Strong, 1-1
61	Florida Int'l. #	75	1,967	Guidi, 27	Guidi, 12	Strong, 11	Rustad, 1-1
50	Mississippi #	64	760	Briggs, 15	Gallant, 9	Strong, 5	Rustad, 1-1
55	St. Peter's	65	145	Briggs, 16	Briggs, 8	Rustad, 3	Dionne, Strong, 1-1
51	Rhode Island	62	1,124	Briggs, 21	Briggs, 14	Three with 2	Briggs, 2-5
43	Rutgers \$	71	2,521	Rustad, 10	Guidi, 9	Strong, 2	Briggs, 1-2
34	Texas \$	72	2,791	Briggs, 8	Rustad, 6	Strong, 4	None
56	Central Mich. %	81	1,888	Sullivan, 9	Strong, 5	Strong, 7	Grealy, Briggs, 1-1
72	Valparaiso %	73	547	Guidi, 23	Guidi, 13	Strong, 8	None
56	DREXEL*	50	514	Strong, 14	Gallant, 8	Rustad, 2	Strong, 2-4
53	DELAWARE	56	1,030	Guidi, 16	Guidi, 11	Strong, 10	Briggs, 3-5
63	VERMONT	94	2,960	Buetow, 13	Buetow, Briggs, 6	Gallant, 2	None
51	HARTFORD	50	1,789	Briggs, 18	Strong, 6	Strong, 7	Briggs, 1-2
60	Dartmouth (OT)*59	927	927	Briggs, 20	Strong, 7	Strong, 8	Briggs, 4-8
52	BOSTON UNIV.	61	137	Briggs, 17	Sullivan, 8	Strong, 7	Briggs, 5-7
43	N'EASTERN	45	163	Briggs, 14	Briggs, 9	Briggs, 3	Briggs, 2-3
79	Central Conn.	52	217	Briggs, 18	Gallant, 6	Guidi, 6	Briggs, 3-4
63	N. HAMPSHIRE	68	1,142	Guidi, 22	Briggs, 7	Strong, 6	None
51	N'EASTERN	57	853	Guidi, 15	Briggs, 15	Strong, 4	None
57	BOSTON UNIV.	64	612	Dionne, 20	Briggs, 14	Strong, 8	Briggs, 2-2
63	HARTFORD	66	250	Briggs, 25	Strong, Dionne, 7	Strong, 6	Briggs, 2-2
67	VERMONT	68	1,524	Grealy, 19	Sullivan, 9	Strong, 10	Grealy, 2-2
79	UMaryland-ES	44	778	Gallant, 14	Sullivan, 9	Strong, 7	Briggs, 2-3
58	DELAWARE	53	559	Sullivan, 15	Sullivan, 10	Sull., Guidi, 2	Briggs, 2-4
66	DREXEL	53	172	Guidi, 19	Guidi, 14	Strong, 6	None
38	N.HAMPSHIRE	58	403	Briggs, 12	Gallant, 7	Dionne, 5	Briggs, 2-6
59	N.Hampshire!	55	285	Guidi, 19	Guidi, 11	Dionne, 4	Briggs, 2-5
44	N'Eastern !!	43	3,050	Guidi, 15	Guidi, 16	Strong, 3	Briggs, 1-2
45	Vermont !!	62	1,775	Briggs, 16	Strong, Gallant, 8	Strong, 5	Briggs, 4-13

- Bell Atlantic Holiday Classic, Piscataway, N.J.

% - Comfort Inn Chippewa Classic, Mt. Pleasant, Mich.

! - North Atlantic Conference Quarterfinal, Durham, N.H.

!! - North Atlantic Conference Semifinal/Final, Burlington, Vt.

* - game played at Memorial Gym, Orono.

CAPS-indicates North Atlantic Conference games.

Bold-indicates home games.



1992-93 In Review

Despite ending the season with a mark of 9-20, the UMaine Women accomplished many milestones, and closed the 1993 season in a surprising and upbeat fashion.

UMaine faced many challenges last season. With a new coaching staff there was a new system to learn. Four seniors who combined to score 65 percent of UMaine's points ended their careers the season before, placing several inexperienced players in the starting lineup. UMaine faced a schedule which featured the likes of Boston College, Mississippi, St. Peter's, Rutgers, Texas, Central Michigan and Vermont.

The UMaine Women would struggle against those challenges, beginning the season 0-9, before defeating Drexel in the North Atlantic Conference opener. Shining brightly in the early-season struggles were first-year players Stephanie Guidi and Stacia Rustad, both of whom were named to the Maine Tip-Off Classic All-Tournament team. Guidi would earn Bell Atlantic Holiday Classic All-Tournament honors with 15 points and 13 rebounds in two games against Rutgers and Texas.

With the win over Drexel the Black Bears would play just two games under .500 the rest of the season. The opening NAC win was followed by a 56-53 loss to Delaware and a 94-63 drubbing by Vermont.

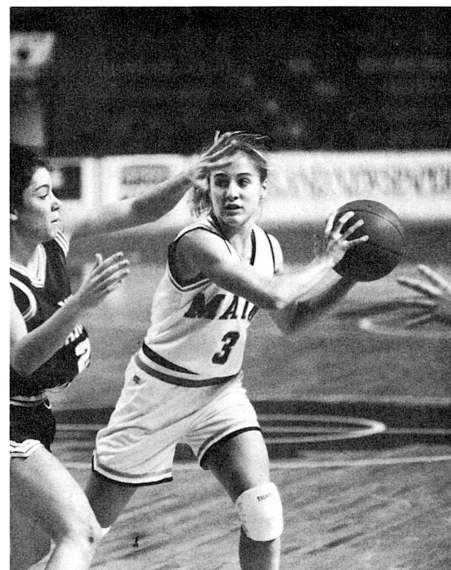
The UMaine Women bounced back with one-point wins over Hartford, 51-

50 and Dartmouth, 60-59. Heather Briggs would stick a three-pointer in overtime to lift UMaine over the Big Green.

Boston University and Northeastern handed UMaine road losses, 61-52 and 45-43, respectively, dropping Maine's record to 2-13 overall and 2-4 in the NAC. Briggs, the lone senior on the team, became the seventh player in UMaine history to surpass the 1,000-point plateau with 14 points against NU.

The Black Bears drilled Central Connecticut 79-52 for the first road win of the season. Maine controlled the game throughout with Briggs scoring 18 points.

The UMaine Women then dropped five conference games in a row, all by an average of four points. After a 66-63 loss at the University of Hartford, UMaine took nationally-ranked Vermont to the buzzer, falling 68-67. Erin Grealy tallied 19 points against the team that would set the NCAA record for consecutive regular-season wins. UMaine built on the impressive effort, winning three of its final four regular-season games. A 79-44 victory over Maryland-Eastern Shore was followed by a demanding road sweep over Delaware, 58-53, and Drexel, 66-53. Rita Sullivan with a double-double of 15 points and 10 rebounds pushed UMaine over the Blue Hens. Guidi recorded the double-double with 19 points and 14



Chrissy Strong led the team in assists, in 1992-93, with a 4.86 per game average.

caroms over Drexel. After closing the season with a 58-38 loss at New Hampshire, UMaine entered the NAC playoffs seeded seventh against the Wildcats, seeded second.

UMaine ventured to Durham, N.H. and stole a 59-55 first-round upset behind 19 points and 11 rebounds from NAC All-Rookie team member Guidi. The win advanced UMaine to its eighth straight conference final four where the Black Bears met third seed Northeastern. In a defensive battle, Maine held on for a 44-43 win aided by 15 points and 16 rebounds from Guidi. UMaine withstood a last-second skirmish under the basket by NU to earn a rematch with 17th-ranked Vermont in the NAC Championship. UMaine became the lowest seed ever to advance to the NAC Championship and was making its fourth straight trip to the title game.

Briggs, who earlier in the season broke the UMaine record for three-pointers in a year, tied the NAC Tournament records for threes made (4) and attempted (13) in a game. UMaine still fell short to Vermont, 62-45. Briggs and Guidi earned NAC All-Tournament honors as UMaine closed its season with wins in five of its last seven games, including four road victories.



Junior forward Rita Sullivan (second from right) provides leadership as a 1993-94 co-captain for the Black Bears.



University of Maine Women's Basketball Records

INDIVIDUAL RECORDS

Most Points

Game: 46 by Rachel Bouchard
vs. VCU, 1/19/89
Season: 784 by Rachel Bouchard, '89-'90
Career: 2,405 by Rachel Bouchard, '87-'91

Most Rebounds

Game: 29 by Wendy Farrington vs.
Southern Maine, '79-'80
Season: 380 by Liz Coffin, '84-'85
Career: 1,351 by Liz Coffin, '84-'88

Most Assists

Game: 14 by Julia Treadwell vs.
New Brunswick, '83-'84
Season: 191 by Julia Treadwell, '83-'84
Career: 426 by Julia Treadwell, '80-'84

Most Steals

Game: 10 by Julie Bradstreet, 1/3/92
Season: 107 by Julie Bradstreet, '91-'92
Career: 309, by Liz Coffin, '84-'88

Most Blocked Shots

Game: 6 by Jess Carpenter vs.
Drake, 12/8/90
Season: 53 by Lauree Gott, '86-'87
Career: 147, by Rachel Bouchard, '87-'91

Most Field Goals Made

Game: 19, by Rachel Bouchard vs.
VCU, 12/9/88
Season: 263, by Rachel Bouchard, '89-'90
Career: 875, by Rachel Bouchard, '87-'91

Most FG's Attempted

Game: 32, by Wendy Farrington vs.
Southern Maine, '79-'80
Season: 496, by Liz Coffin, '85-'86
Career: 1,779, by Liz Coffin, '84-'88

Field Goal Percentage

Game: .909, by Rachel Bouchard vs.
Northeastern, 2/13/91
Season: .609, by Rachel Bouchard, '90-'91
Career: .541, by Rachel Bouchard, '87-'91

Three-Point FG's Made

Game: 5, by Carrie Goodhue vs.
Colgate, 2/15/91
5, by Heather Briggs vs.
Boston University, 1/28/93
Season: 42, by Heather Briggs, '92-'93
Career: 105, by Carrie Goodhue, '88-'92

Three-Point FG's Attempted

Game: 13, by Heather Briggs vs.
Vermont, 3/13/93
Season: 104, by Heather Briggs, '92-'93
Career: 271, by Carrie Goodhue, '88-'92

Three-Point FG Percentage

Game: 1.000, by Carrie Goodhue vs.
(min. 3 att.) Cornell, 11/23/89
Season: .462, (18/39) by Heather Briggs,
(min. 35 att.) '90-'91
Career: .389, by Heather Briggs, '89-'93

Free Throws Made

Game: 19, by Rachel Bouchard vs.
Brooklyn, 1/13/89
Season: 198, by Rachel Bouchard, '89-'90
Career: 655, by Rachel Bouchard, '87-'91

Free Throws Attempted

Game: 27, by Rachel Bouchard vs.
Brooklyn, 1/13/89
Season: 287, by Rachel Bouchard, '89-'90
Career: 936, by Rachel Bouchard, '87-'91

Free Throw Percentage

Game: 1.000 (13/13), by Emily Ellis vs.
(min. 10 att.) Northeastern, '83-'84
1.000 (13/13), by Liz Coffin vs.
Boston University, '87-'88
Season: .890 (31/35), by Lisa Cormier,
'82-'83
Career: .793, by Lisa Cormier, '80-'84

TEAM RECORDS

Most Field Goals

Game: 58 vs. St. Joseph's (Me.), '83-'84
Season: 856, '86-'87

Most Field Goal Attempts

Game: 111 vs. UNH, '76-'77,
vs. Acadia, '76-'77
Season: 2,208, '82-'83

Most Free Throws

Game: 33 vs. St. Joseph's (Me.), '83-'84
Season: 450, '83-'84

Most Free Throw Attempts

Game: 49 vs. UM-Presque Isle, '76-'77
Season: 644, '83-'84

Most Points

Game: 134 vs. St. Joseph's (Me.), '83-'84
Season: 2,155, '86-'87

Most Rebounds

Game: 80 vs. UM-Presque Isle, '86-'87
Season: 1,395, '86-'87

Highest Field Goal Percentage

Game: .604 vs. St. Joseph's (Me.), '83-'84
Season: .451, '83-'84

Highest Free Throw Percentage

Game: .962 vs. Southern Maine
(25/26), '83-'84
Season: .733, '86-'87

Most Assists

Game: 34 vs. St. Joseph's (Me.), '83-'84
Season: 545, '83-'84

Most Steals

Game: 29 vs. UM-Farmington, '83-'84
Season: 370, '83-'84

Highest Scoring Average

79.6, '83-'84

Most Wins

24, '86-'87

Highest Win Percentage

.857, '86-'87

Most Consecutive Wins

18, '85-'86

Widest Win Margin

96 pts (134-38)
vs. St. Joseph's, '83-'84



Heather Briggs set six three-point field goal records during her four-year career at UMaine.



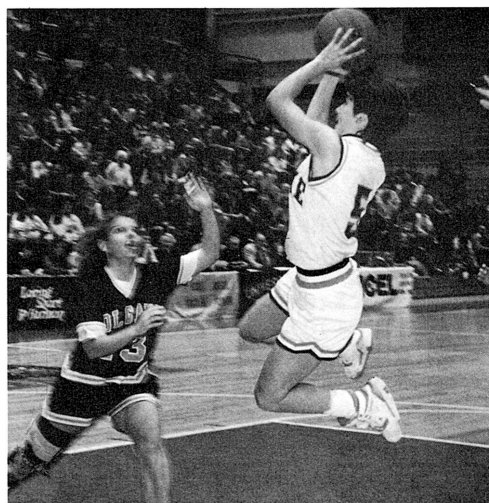
UMaine vs. All-Time Opponents

<u>Opponent</u>	<u>First Game</u>	<u>Last Game</u>	<u>Mtgs.</u>	<u>UM</u>	<u>Opp.</u>	<u>Opponent</u>	<u>First Game</u>	<u>Last Game</u>	<u>Mtgs.</u>	<u>Maine</u>	<u>Opp.</u>
Acadia	1976	1976	1	1	0	St. Mary's (Cal.)	1992	1992	1	0	1
Alabama-Birmingham	1991	1991	1	1	0	St. Peter's	1991	1992	3	2	1
Army	1983	1983	2	1	1	Sacramento State	1992	1992	1	1	0
Bates	1975	1981	3	3	0	San Diego State	1987	1989	2	1	1
Boston College	1992	1992	1	0	1	Siena	1984	1991	5	4	1
Boston University	1977	1993	27	15	12	South Carolina	1992	1992	1	0	1
Bowdoin	1978	1983	9	9	0	Southern Cal	1987	1987	1	0	1
Brooklyn	1977	1989	11	10	1	So. Connecticut	1980	1983	2	0	2
Brown	1983	1989	4	2	2	Southern Maine	1976	1986	16	16	0
Canisius	1992	1992	1	1	0	Springfield	1976	1986	2	1	1
Central Connecticut	1977	1993	12	10	2	Stetson	1990	1990	1	1	0
Central Michigan	1990	1993	2	1	1	Syracuse	1989	1989	1	1	0
Cheyney	1986	1987	2	2	0	Tennessee	1990	1992	2	0	2
Cleveland State	1992	1992	1	1	0	Texas	1992	1992	1	0	1
Colby	1978	1986	8	7	1	Tulane	1987	1987	1	1	0
Colgate	1987	1992	7	7	0	Utica	1987	1988	2	2	0
Connecticut	1979	1989	6	1	5	Valparaiso	1993	1993	1	0	1
Concordia	1980	1982	2	2	0	Vanderbilt	1991	1991	1	0	1
Cornell	1991	1991	1	1	0	VCU	1989	1989	1	0	1
Dartmouth	1984	1993	6	5	1	Villanova	1991	1991	1	0	1
Delaware	1992	1993	4	3	1	Vermont	1975	1993	36	24	12
Drake	1991	1991	1	1	0	Virginia	1984	1984	1	0	1
Drexel	1985	1993	7	7	0	Wagner	1990	1990	1	1	0
E. Connecticut	1981	1982	2	1	1	Wake Forest	1990	1990	1	1	0
E. Washington	1989	1989	1	1	0	William & Mary	1987	1987	1	1	0
Fairfield	1984	1992	2	0	2	Wisconsin-Green Bay	1992	1992	1	0	1
Florida	1990	1990	1	0	1	Wyoming	1990	1990	1	1	0
Florida International	1992	1992	1	0	1						
UM-Farmington	1975	1985	20	18	2						
Georgia Tech	1989	1989	1	0	1						
Hartford	1986	1993	17	16	1						
Harvard	1984	1990	7	6	1						
Hofstra	1985	1985	1	1	0						
Holy Cross	1984	1992	6	2	4						
Husson	1975	1986	18	16	2						
Illinois State	1990	1990	1	0	1						
James Madison	1992	1992	1	1	0						
Kentucky	1990	1990	1	0	1						
Lamar	1991	1991	1	0	1						
Laval	1979	1981	3	3	0						
Lehigh	1986	1986	1	1	0						
Louisville	1989	1989	1	1	0						
Loyola College	1984	1984	1	1	0						
Maryland-Eastern Shore	1993	1993	1	1	0						
Manhattan	1984	1984	1	1	0						
Massachusetts	1976	1989	12	8	4						
Miami	1987	1987	1	1	0						
Michigan State	1989	1989	1	0	1						
Middle Tennessee	1986	1986	1	1	0						
Mississippi	1992	1992	1	0	1						
Mt. Allison	1979	1983	3	3	0						
Navy	1987	1987	1	1	0						
NC-Charlotte	1991	1991	1	0	1						
NC State	1989	1989	1	0	1						
Nebraska	1987	1987	1	1	0						
New Brunswick	1979	1985	8	4	4						
New Hampshire	1975	1993	29	17	13						
Northeastern	1978	1993	26	12	14						
Plymouth St.	1978	1982	3	3	0						
UM-PI	1975	1987	14	14	0						
New Orleans	1990	1990	1	0	1						
Providence	1978	1989	6	1	5						
Quebec-3 Rivers	1979	1979	1	1	0						
Queens	1984	1984	2	2	0						
Rhode Island	1975	1992	13	5	8						
Richmond	1991	1991	1	0	1						
Rutgers	1990	1992	2	1	1						
SE Louisiana	1990	1990	1	0	1						
St. Joseph's	1982	1984	4	4	0						

Year-by-Year Results				
<u>Season</u>	<u>Record</u>	<u>Coach</u>	<u>Captains</u>	<u>Post-season</u>
75-76	12-5	Eilene Fox	C. Higgins D. Dalfonso	MAIAW Champ. EAIWA Tourney
76-77	15-3	Eilene Fox	J. Thorpe	MAIAW Champ. EAIWA Tourney
77-78	13-7	Eilene Fox	L. Osgood	
78-79	14-6	Eilene Fox	C. Pazdziorko C. Lamontagne	MAIAW Champ.
79-80	16-4	Eilene Fox	C. Lamontagne S. Baker	MAIAW Champ.
80-81	16-7	Eilene Fox	B. Dunham M. Warner	MAIAW Champ.
81-82	16-6	Eilene Fox	B. Hamilton C. Nason	
82-83	16-12	Eilene Fox	C. Nason	MAIAW Champ.
83-84	16-11	Peter Gavett	L. Cormier J. Treadwell T. Gardiner	MAIAW Champ.
84-85	21-9	Peter Gavett	E. Ellis	Seaboard Conf. (Finalists)
85-86	22-7	Peter Gavett	L. Gott M. Walker	Seaboard Conf. (Cons. Champ.)
86-87	24-4	Peter Gavett	L. Coffin K. Nobert	Seaboard Conf. (Finalists)
87-88	23-6	Peter Gavett	L. Coffin K. Nobert C. Cummings	Seaboard Conf. (Finalists)
88-89	19-8	Trish Roberts	R. Bouchard C. Iaconeta K. Nobert	Seaboard Conf. (Champion)
89-90	23-7	Trish Roberts	R. Bouchard C. Iaconeta B. Sullivan	North Atlantic (Champion) NWIT
90-91	20-8	Trish Roberts	R. Bouchard	North Atlantic (Champion)
91-92	20-9	Trish Roberts	J. Bradstreet T. Frenette	North Atlantic (Runners-Up)
92-93	9-20	Joanne Palombo	H. Briggs C. Strong C. Buetow	North Atlantic (Runners-Up)



Eighteen Years In Review



Cathy Iaconeta was the Black Bear floor general from 1986-1990.

1975-76

Rhode Island 91, Maine 71
 Maine 68, New Hampshire 58
 Maine 95, Maine-Farmington 36
 Maine 79, Bates 42
 Maine 90, Maine-Presque Isle 55
 Maine 70, Husson 43
 Maine 74, Southern Maine 57
 Vermont 75, Maine 71
 Maine 92, Maine-Presque Isle 58
 Maine 82, Southern Maine 57
 Maine 63, Maine-Farmington 26
 Husson 51, Maine 49
 Rhode Island 103, Maine 65
 Maine 69, Massachusetts 63
 Springfield 69, Maine 54
 Maine 93, Southern Maine 57
 Maine 63, Husson 53

1976-77

Maine 64, Acadia 54
 Maine 58, Massachusetts 56
 Maine 61, New Hampshire 58
 Maine 82, Maine-Farmington 40
 Maine 104, Maine-Presque Isle 46
 Maine 82, Rhode Island 76
 Maine 58, Husson 48
 Maine 93, Southern Maine 42
 Vermont 75, Maine 61
 Maine 72, Maine-Farmington 56
 Maine 83, Husson 45
 Maine 76, Maine-Presque Isle 46
 Maine 57, Southern Maine 28

1977-78

Massachusetts 77, Maine 68
 Boston University 66, Maine 54
 Maine 70, Southern Maine 44
 Maine 72, New Hampshire 69
 Maine 70, Maine-Farmington 52
 Maine 79, Southern Maine 45
 Maine 74, Rhode Island 72
 Maine 76, Husson 65
 Maine 70, Vermont 51
 Maine 75, Bowdoin 59
 Maine 97, Maine-Presque Isle 47
 Providence 72, Maine 53
 Maine 82, Colby 48
 Maine 77, Maine-Presque Isle 60
 Maine 83, Husson 58
 Maine-Farmington 72, Maine 66

1978-79

Massachusetts 87, Maine 58
 Boston University 78, Maine 67
 Maine 77, Plymouth State 54
 New Hampshire 92, Maine 87
 Maine 68, Maine-Farmington 49
 Rhode Island 80, Maine 69
 Maine 62, Husson 42
 Maine 100, Vermont 82
 Maine 64, Southern Maine 48
 Maine 88, Connecticut 75
 Maine 75, Bowdoin 61
 New Brunswick 98, Maine 65
 Maine 88, Maine-Presque Isle 51
 Maine 71, Husson 48
 Maine 77, Maine-Farmington 40
 Maine 81, Colby 68
 Providence 62, Maine 50

1979-80

Maine 100, Quebec 42
 Maine 69, Laval 62
 Maine 113, Moncton 60
 Moncton Little 90, Maine 76
 Maine 70, Plymouth State 48
 New Hampshire 95, Maine 81

Maine 76, Southern Maine 69
 Rhode Island 78, Maine 62
 Maine 86, Maine-Farmington 56
 Maine 88, Bowdoin 54
 Maine 74, Vermont 49
 Boston University 83, Maine 58
 Maine 70, Massachusetts 59
 Maine 69, Maine-Farmington 54
 Maine 95, Colby 58
 Maine 82, Maine-Presque Isle 29
 Maine 79, Husson 57
 Maine 91, Bates 41
 Maine 69, Husson 50
 Maine 76, Bowdoin 58

1980-81

Maine 71, Concordia 70
 Southern Conn. 73, Maine 66
 New Hampshire 83, Maine 61
 Massachusetts 97, Maine 62
 Boston University 88, Maine 42
 Maine 75, Maine-Farmington 44
 Maine 67, Southern Maine 35
 Rhode Island 80, Maine 63
 Maine 73, Bowdoin 58
 Maine 52, Maine-Farmington 36
 New Brunswick 67, Maine 60
 Maine 66, Bowdoin 41
 Maine 83, Vermont 62
 Maine 83, Vermont 80
 Maine 113, Maine-Presque Isle 44
 Maine 106, Plymouth State 68
 Maine 86, Husson 61
 Maine 65, Eastern Connecticut 60
 Connecticut 72, Maine 55
 Maine 80, Colby 52
 Maine 106, Bates 37
 Maine 79, St. Joseph's 59
 Maine 58, Southern Maine 43

1981-82

Maine 75, Mt. Allison 39
 New Brunswick 75, Maine 65
 Maine 67, New Brunswick 62
 Maine 88, Bowdoin 54
 New Hampshire 83, Maine 51
 Maine 73, Laval 48
 Maine 53, Southern Maine 40
 Rhode Island 78, Maine 68
 Maine 66, Maine-Farmington 40
 Maine 91, Plymouth State 55
 Maine 65, New Brunswick 53
 Maine 84, Vermont 81
 Maine 87, Vermont 70
 Maine 93, Maine-Farmington 30
 Maine 85, St. Joseph's 45
 Massachusetts 73, Maine 57
 Connecticut 82, Maine 45
 Maine 98, Maine-Presque Isle 48
 Maine 65, Colby 64
 Maine 85, Husson 45
 Maine 71, St. Joseph's 47
 Colby 58, Maine 47

1982-83

Maine 53, Ottawa 45
 La Redoute 79, Maine 76
 Eastern Conn. 49, Maine 48
 Central Conn. 89, Maine 79
 Maine 60, New Brunswick 56
 Connecticut 81, Maine 49
 New Hampshire 91, Maine 69
 Maine 71, Prince Edward Island 51
 Maine 75, Carleton 53
 Providence 76, Maine 49
 Army 83, Maine 54
 Southern Maine 75, Maine 74
 Rhode Island 76, Maine 44

Maine 64, Maine-Farmington 40
 Northeastern 73, Maine 56
 New Brunswick 75, Maine 72
 Maine 76, Vermont 66
 Maine 72, Vermont 63
 Maine-Farmington 65, Maine 61
 Maine 85, Bowdoin 45
 Maine 73, Massachusetts 71
 Maine 84, St. Joseph's 43
 Maine 78, Colby 65
 Maine 77, Prince Edward Island 49
 Maine 81, Maine-Presque Isle 69
 Maine 100, Maine-Machias 52
 Maine 80, Nasson 58
 Maine 74, Southern Maine 59

1983-84

Southern Connecticut 80, Maine 64
 Boston University 47, Maine 41
 Army 77, Maine 63
 Maine 84, Harvard 50
 Maine 93, Mt. Allison 40
 Maine 95, New Brunswick 84
 Maine 134, St. Joseph's 38
 Connecticut 78, Maine 61
 Maine 86, Queens 58
 Holy Cross 75, Maine 59
 Northeastern 87, Maine 64
 Brown 60, Maine 58
 Maine 90, Husson 62
 Maine 85, Southern Maine 71
 Northeastern 76, Maine 70
 Maine 89, Maine-Farmington 59
 Maine 111, Maine-Presque Isle 63
 New Brunswick 83, Maine 59
 Maine 87, Maine-Farmington 37
 Maine 72, Massachusetts 71
 New Hampshire 83, Maine 65
 Maine 99, Vermont 72
 Maine 64, Vermont 47
 Maine 73, Colby 63
 Rhode Island 109, Maine 67
 Maine 104, Maine-Presque Isle 44
 Maine 111, Husson 75

1984-85

Virginia 115, Maine 57
 Maine 69, Manhattan 67
 Siena 55, Maine 52
 Maine 86, Harvard 56
 Fairfield 75, Maine 66
 Maine 83, Brooklyn 61
 Maine 83, Brooklyn 39
 Maine 81, Loyola 48
 Maine 69, Queens 66

Maine 55, Boston University 39
 Maine 67, Dartmouth 47
 Maine 65, Boston University 52
 Maine 83, Central Connecticut 63
 Maine 67, Brown 55
 Maine 74, Vermont 55
 Vermont 67, Maine 64
 Northeastern 55, Maine 46
 Holy Cross 68, Maine 61
 Maine 79, Husson 46
 Maine 102, Southern Maine 54
 Maine 89, New Brunswick 51
 Northeastern 45, Maine 42
 Maine 83, Maine-Farmington 43
 Maine 63, Laval 32
 Maine 66, Massachusetts 65
 Maine 84, Colby 67
 Maine 65, Rhode Island 57
 New Hampshire 65, Maine 55
 Maine 62, New Hampshire 59
 Northeastern 73, Maine 59

1985-86

Maine 76, Massachusetts 66
 Maine 87, Siena 54
 Maine 79, Husson 26
 Maine 86, Brooklyn 72
 Maine 80, Brooklyn 62
 Maine 58, Harvard 56
 Maine 84, Hofstra 57
 Maine 56, Drexel 48
 Maine 70, Dartmouth 51
 Maine 61, Boston University 57
 Maine 57, Northeastern 53
 Maine 71, Hartford 53
 Maine 56, Vermont 54
 Maine 80, Vermont 69
 Maine 67, Dartmouth 58
 Maine 76, Cheyney State 49
 Maine 56, Southern Maine 51
 Maine 57, Hartford 47
 Northeastern 71, Maine 55
 Holy Cross 81, Maine 68
 Central Connecticut 63, Maine 62
 Brown 73, Maine 62
 Maine 83, Colby 45
 Maine 71, Boston University 68
 New Hampshire 64, Maine 55
 Boston University 52, Maine 51
 Maine 53, New Hampshire 50

1986-87

Maine 77, Rhode Island 50
 Maine 82, Southern Maine 61
 Maine 80, Lehigh 53



Eighteen Years In Review

Maine 76, Siena 50
 Maine 77, Husson 42
 Maine 81, Harvard 56
 Maine 98, Springfield 51
 Maine 75, Middle Tennessee 67
 Maine 69, Central Connecticut 55
 Maine 91, Utica 57
 Maine 91, Colgate 65
 Maine 82, Central Connecticut 65
 Northeastern 66, Maine 62
 Maine 108, Maine-Presque Isle 29
 Maine 72, Vermont 58
 Maine 56, Vermont 55
 Maine 72, Boston University 70
 Maine 71, Cheyney State 44
 New Hampshire 61, Maine 52
 Maine 86, Hartford 66
 Maine 78, Hartford 69
 Maine 72, Northeastern 67
 Boston University 89, Maine 73
 Maine 82, New Hampshire 67
 Maine 89, Brooklyn 36
 Maine 79, Brooklyn 42
 Maine 76, Boston University 54
 Northeastern 55, Maine 48

1987-88

Maine 79, Drexel 65
 Maine 66, San Diego State 65
 Providence 83, Maine 78
 Southern California 83, Maine 63
 Maine 97, Utica 56
 Harvard 80, Maine 75
 Maine 71, William & Mary 69
 Maine 65, Tulane 57
 Maine 92, Navy 55
 Maine 89, Nebraska 82
 Maine 92, Colgate 57
 Maine 84, Colgate 58
 Maine 76, Miami 56
 Maine 75, Brooklyn 32
 Maine 88, Brooklyn 50
 Maine 52, Northeastern 42
 Boston University 78, Maine 75
 Maine 99, Central Connecticut 68
 Maine 86, Vermont 50
 Maine 84, Vermont 73
 Maine 64, New Hampshire 63
 Maine 73, Hartford 69

Maine 80, Hartford 67
 Maine 2, Northeastern 0
 Maine 64, Boston University 63
 Maine 64, Central Connecticut 45
 New Hampshire 60, Maine 56
 Maine 82, New Hampshire 76
 Boston University 66, Maine 62

1988-89

Maine 75, Finland 49
 San Diego State 52, Maine 49
 Maine 63, Eastern Washington 56
 Maine 59, Syracuse 45
 Michigan State 60, Maine 53
 Virginia Commonwealth 70, Maine 64
 Connecticut 80, Maine 56
 Maine 89, Harvard 77
 Georgia Tech 82, Maine 62
 Maine 76, Massachusetts 62
 Providence 85, Maine 69
 Maine 56, Louisville 55
 Maine 64, Brown 51
 Maine 75, Brooklyn 38
 Maine 75, Brooklyn 47
 Northeastern 60, Maine 56
 Maine 56, Boston University 43
 Maine 71, Central Connecticut 69
 Maine 66, Vermont 58
 Maine 65, Vermont 48
 Maine 65, New Hampshire 61
 Maine 85, Hartford 80
 Maine 84, Hartford 64
 Maine 67, Northeastern 60
 Maine 75, Boston University 55
 Maine 77, Central Connecticut 44
 Maine 69, New Hampshire 60
 Northeastern 60, Maine 47

1989-90

Maine 68, Siena 52
 Maine 74, Wake Forest 56
 Maine 75, Rutgers 67
 NC State 77, Maine 66
 Maine 84, Wagner 37
 SE Louisiana 71, Maine 68
 New Orleans 70, Maine 55
 Maine 86, Delaware State 33
 Maine 59, Harvard 55
 Maine 83, Holy Cross 81



Memorial Gym was the home of the Black Bears until 1989. Maine has since played in the Bangor Auditorium and now plays home games on campus at the Alford Sports Arena.

Maine 86, Stetson 78
 Florida 78, Maine 73
 Maine 77, Colgate 54
 Maine 69, Northeastern 37
 Maine 92, Vermont 66
 Maine 69, Colgate 61
 Maine 78, Hartford 30
 Boston University 54, Maine 51
 Maine 57, Central Michigan 54
 Maine 60, Northeastern 42
 Maine 70, New Hampshire 49
 Maine 76, Vermont 66
 Maine 72, New Hampshire 54
 Maine 83, Hartford 47
 Maine 70, Boston University 56
 Maine 64, Vermont 54
 Kentucky 76, Maine 66
 Illinois State 85, Maine 80
 Maine 68, Wyoming 48

1990-91

Maine 83, Cornell 36
 Richmond 69, Maine 53
 Vanderbilt 74, Maine 67
 UNC-Charlotte 62, Maine 57
 Maine 70, Rhode Island 48
 Villanova 65, Maine 60
 Maine 84, Drake 72
 Tennessee 77, Maine 64
 Maine 83, Dartmouth 45
 Maine 63, Alabama-Birmingham 62
 Maine 60, St. Peter's 57
 Maine 72, New Hampshire 55
 Maine 77, Boston University 49
 Maine 62, Northeastern 42
 Maine 66, Hartford 35
 Maine 82, Vermont 55
 Holy Cross 66, Maine 65
 Maine 71, New Hampshire 53
 Lamar 69, Maine 68
 Maine 73, Boston University 52
 Maine 103, Northeastern 50
 Maine 91, Colgate 56
 Maine 81, Siena 55
 Maine 90, Hartford 39
 Maine 107, Arkansas State 73
 Vermont 74, Maine 65
 Maine 79, Hartford 59
 Maine 79, Vermont 64

1991-92

Tennessee 86, Maine 71
 Wisconsin-Green Bay 58, Maine 57
 South Carolina 56, Maine 53
 Dartmouth 60, Maine 55

Maine 87, Cleveland St. 59
 Fairfield 50, Maine 46
 Maine 83, Holy Cross 71
 Maine 52, St. Peter's 47
 Maine 71, James Madison 54
 St. Mary's (Cal.) 69, Maine 56
 Maine 75, Canisius 72
 Maine 90, Sacramento State 83
 Maine 59, Hartford 54
 Vermont 69, Maine 62
 Maine 71, Colgate 42
 Maine 61, Drexel 45
 Maine 75, Delaware 59
 Vermont 73, Maine 55
 Maine 56, Hartford 53
 Maine 74, Boston University 57
 Maine 54, Northeastern 53
 Maine 65, New Hampshire 55
 Maine 57, Northeastern 53
 Maine 83, Boston University 52
 Maine 73, Delaware 54
 Maine 71, Drexel, 54
 Maine 68, Drexel 57
 Maine 74, New Hampshire 65
 Vermont 70, Maine 50

1992-93

Boston College 80, Maine 65
 Florida International 75, Maine 61
 Mississippi 64, Maine 50
 St. Peter's 65, Maine 55
 Rhode Island 62, Maine 51
 Rutgers 71, Maine 43
 Texas 72, Maine 34
 Central Michigan 81, Maine 56
 Valparaiso 73, Maine 72
 Maine 56, Drexel 50
 Delaware 56, Maine 53
 Vermont 94, Maine 63
 Maine 51, Hartford 50
 Maine 60, Dartmouth 59
 Boston University 61, Maine 52
 Northeastern 45, Maine 43
 Maine 79, Central Connecticut 52
 New Hampshire 68, Maine 63
 Northeastern 57, Maine 51
 Boston University 64, Maine 57
 Hartford 66, Maine 63
 Vermont 68, Maine 67
 Maine 79, Maryland-E'strn Shore 44
 Maine 58, Delaware 53
 Maine 66, Drexel 53
 New Hampshire 58, Maine 38
 Maine 59, New Hampshire 55
 Maine 44, Northeastern 43
 Vermont 62, Maine 45



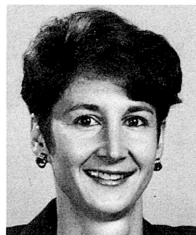
The 1989-90 women's basketball team became the only team in the program's history to participate in post-season play when it qualified for the National Women's Invitational Tournament in Amarillo, Texas.



Meet The Opponents

GAME 1 vs. Boston College November 21, 1 p.m. Orono

Location: Chestnut Hill, Mass. 02167
Founded: 1863
Enrollment: 9,167
President: J. Donald Monan, S.J.
Athletic Director: Chet Gladchuk
Nickname: Eagles
Colors: Maroon and Gold
Conference: Big East
Home Court (Capacity):
 Conte Forum (8,606)
Sports Information Contact:
 Tammy Garr
Office Phone: (617) 552-3004
Home Phone: (617) 552-4903
Press Row Phone: (617) 327-2010
Head Coach: Cathy Inglese
 Southern Connecticut, 1980
Career Record: 120-74 (7 years)
Record at Boston College: First Year
Coach's Phone: (617) 552-4530
Assistant Coaches: Keith Cieplicki
 Robin Garrett
 MaryBeth Tobin
Letterwinners Ret./Lost: 9/3
Starters Ret./Lost: 2/3
1992-93 Record (Conference): 10-17 (4-14)
Series Record: BC leads 1-0
Last Meeting: BC, 80-65 (12/1/92)

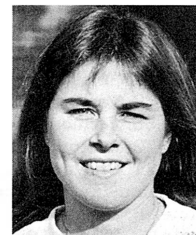


Head Coach
Cathy Inglese

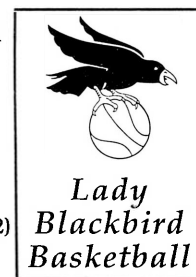


GAME 2 vs. Long Island University December 3, 8 p.m. DEAD RIVER TIP-OFF CLASSIC Orono

Location: Brooklyn, N.Y. 11201
Founded: 1926
Enrollment: 8,000
President: Dr. David J. Steinberg
Athletic Director: Paul Lizzo
Nickname: Lady Blackbirds
Colors: Blue and White
Conference: Northeast Conference
Home Court (Capacity):
 Schwartz Athletic Center (1,700)
Sports Information Contact:
 Bob Gesslein
Office Phone: (718) 488-1420
Home Phone: (516) 741-5810
Press Row Phone: (718) 488-3338
Head Coach: Marguerite (Moran) Gualtieri
 Hofstra, 1989
Career Record: 34-64 (4 years)
Record at LIU: Same
Coach's Phone: (718) 488-1531
Assistant Coach: Cammie Williams
Letterwinners Ret./Lost: 8/1
Starters Ret./Lost: 4/1
1992-93 Record (Conference): 9-17 (6-12)
Series Record: First meeting
Last Meeting: First meeting



Head Coach
Moran Gualtieri



GAME 3 Possible Opponent vs. Army December 4, 6/8 p.m. DEAD RIVER TIP-OFF CLASSIC Orono

Location: West Point, N.Y. 10996
Founded: 1802
Enrollment: 4,200
Superintendent: Lt. Gen. Howard D. Graves
Athletic Director: Al Vanderbush
Nickname: Lady Knights, Cadets
Colors: Black, Gold, Gray
Conference: Patriot League
Home Court (Capacity):
 Christl Arena (5,043)
Sports Information Contact:
 Mady Salvani
Office Phone: (914) 938-3512
Home Phone: (914) 446-2091
Press Row Phone: (914) 938-4441
Head Coach: Lynn Chiavaro
 Northeastern, 1977
Career Record: 98-75 (6 years)
Record at Army: Same
Coach's Phone: (914) 938-2796
Assistant Coaches: Barbara Affeldt
 Christian Appleman
 Deidra Reed
Letterwinners Ret./Lost: 6/3
Starters Ret./Lost: 4/1
1992-93 Record (Conference): 12-15 (8-4)
Series Record: Army leads, 2-0
Last Meeting: Army, 77-63 (1983)



Head Coach
Lynn Chiavaro



GAME 3 Possible Opponent vs. Northwestern State December 4, 6/8 p.m. DEAD RIVER TIP-OFF CLASSIC Orono

Location: Natchitoches, La. 71497
Founded: 1884
Enrollment: 8,500
President: Dr. Robert Abst
Athletic Director: Tynes Hildebrand
Nickname: Lady Demons
Colors: Purple and White
Conference: Southland
Home Court (Capacity):
 Prather (3,900)
Sports Information Contact:
 Bruce Ludlow
Office Phone: (318) 357-6467
Home Phone: (318) 352-8208
Press Row Phone: (318) 357-6297
Head Coach: James Smith
 Northeast Louisiana, 1975
Career Record: 116-59 (6 years)
Record at Northwestern State: Same
Coach's Phone: (318) 357-5891
Assistant Coaches: Gail Striegler
Letterwinners Ret./Lost: 8/3
Starters Ret./Lost: 2/3
1992-93 Record (Conference): 24-8 (14-4)
Series Record: First meeting
Last Meeting: First meeting



Head Coach
James Smith



Meet The Opponents

GAME 4 vs. Boise State December 11, 6 p.m. MINNESOTA DIAL CLASSIC Minneapolis, Minn.

Location: Boise, Idaho 83725
Founded: 1932
Enrollment: 15,000
President: Dr. Charles Ruch
Women's Athletic Director: Carol Ladwig
Nickname: Broncos
Colors: Blue and Orange
Conference: Big Sky
Home Court (Capacity):
 BSU Pavillion (12,380)
Sports Information Contact:
 Lori Orr Hays
Office Phone: (208) 385-3438
Home Phone: (208) 343-8104
Press Row Phone: (208) 385-1503
Head Coach: June Daugherty
 Ohio State, 1978
Career Record: 71-43 (4 years)
Record at Boise State: Same
Coach's Phone: (208) 385-1760
Assistant Coaches: Jill Stevens
 Tricia Stevens
 Mike Daugherty
Letterwinners Ret./Lost: 8/2
Starters Ret./Lost: 4/1
1992-93 Record (Conference): 19-8 (9-5)
Series Record: First Meeting
Last Meeting: First Meeting

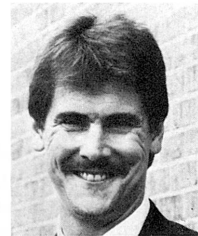


**Head Coach
June Daugherty**



GAME 5 Possible Opponent vs. Chicago State December 12, 1/3 p.m. MINNESOTA DIAL CLASSIC Minneapolis, Minn.

Location: Chicago, Ill. 60620
Founded: 1867
Enrollment: 8,004
President: Dr. Dolores E. Cross
Athletic Director: Al Avant
Nickname: Cougars
Colors: Green and White
Conference: East Coast
Home Court (Capacity):
 Phys. Ed and Athletic Building (2,005)
Sports Information Contact:
 Dave Vandewalle
Office Phone: (312) 995-2217
Home Phone: (312) 477-8465
Press Row Phone: (312) 995-3639
Head Coach: Mike Clark
 Oregon, 1981
Career Record: 20-63 (years)
Record at Chicago State: 20-63
Coach's Phone: (312) 995-2219
Assistant Coaches: Seantel Hill
Letterwinners Ret./Lost: 7/4
Starters Ret./Lost: 2/3
1992-93 Record (Conference): 9-18
 (Independent)
Series Record: First Meeting
Last Meeting: First Meeting



**Head Coach
Mike Clark**



GAME 5 Possible Opponent vs. Minnesota December 12, 1/3 p.m. MINNESOTA DIAL CLASSIC Minneapolis, Minn.

Location: Minneapolis, Minn.
Founded: 1855
Enrollment: 39,000
President: Nils Hasselmo
Athletic Director: Chis Voetz
Nickname: Golden Gophers
Colors: Maroon and Gold
Conference: Big Ten
Home Court (Capacity):
 The Sports Pavillion (5,700)
Sports Information Contact:
 Dianne Boyer
Office Phone: (612) 624-3335
Home Phone: (612) 645-4421
Press Row Phone: (612) 624-1394
Head Coach: Linda Hill-MacDonald
 West Chester, 1970
Career Record: 194-183 (13 years)
Record at Minnesota: 28-53 (3 years)
Coach's Phone: (612) 624-9352
Assistant Coaches: Joan Kelly
 Lori Herrmann
 Treka McMillan
Letterwinners Ret./Lost: 11/2
Starters Ret./Lost: 4/1
1992-93 Record (Conference): 14-12 (9-9)
Series Record: First Meeting
Last Meeting: First Meeting



**Head Coach
Linda Hill-
MacDonald**

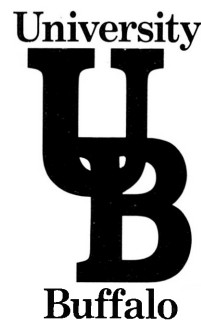


GAME 6 vs. Buffalo December 28, 7:30 p.m. Buffalo, N.Y.

Location: Buffalo, N.Y. 14260
Founded: 1846
Enrollment: 17,000
President: William Greiner
Athletic Director: Nelson E. Townsend
Nickname: Royals
Colors: Royal Blue, Red, White
Conference: East Coast Conference
Home Court (Capacity):
 The Big A - Alumni Arena (8,464)
Sports Information Contact:
 Ted Wasko
Office Phone: (716) 645-3141
Home Phone: (716) 433-4325
Press Row Phone: TBA
Head Coach: Sal Buscaglia
 Canisius, 1976
Career Record: 301-92 (17 years)
Record at Buffalo: 52-30 (3 years)
Coach's Phone: (716) 645-3143
Assistant Coaches: Beckie Dickinson
 Denise Becher
 Christie McGee
Letterwinners Ret./Lost: 8/2
Starters Ret./Lost: 3/2
1992-93 Record (Conference): 13-13
Series Record: First Meeting
Last Meeting: First Meeting



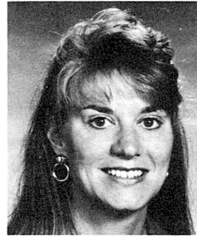
**Head Coach
Sal Buscaglia**



Meet The Opponents

GAME 7 vs. St. Bonaventure December 29, 7 p.m. St. Bonaventure, N.Y.

Location: St. Bonaventure, N.Y. 14778
Founded: 1856
Enrollment: 2,300
President: Dr. Alice Gallin, O.S.U.
Athletic Director: Tom O'Connor
Nickname: Bonnies
Colors: Brown and White
Conference: Atlantic 10
Home Court (Capacity):
 Reilly Center (6,000)
Sports Information Contact:
 Jim Engelhardt
Office Phone: (716) 375-2319
Home Phone: (716) 373-3047
Press Row Phone: (716) 375-2661
Head Coach: Marti Whitmore
 St. Bonaventure, 1985
Career Record: 24-64 (4 years)
Record at St. Bonaventure: First Year
Coach's Phone: (716) 375-2236
Assistant Coaches: Courtney Romeiser
 Samantha David
Letterwinners Ret./Lost: 10/1
Starters Ret./Lost: 4/1
1992-93 Record (Conference): 13-14 (2-12)
Series Record: First Meeting
Last Meeting: First Meeting



**Head Coach
Marti Whitmore**

BONNIES

GAME 8 vs. Georgia State January 2, 2 p.m. PORTLAND SHOOTOUT Portland, Maine

Location: Atlanta, Ga.
Founded: 1913
Enrollment: 24,000
President: Dr. Carl V. Patton
Athletic Director: Orby Moss, Jr.
Nickname: Lady Panthers
Colors: Royal Blue, White, Crimson
Conference: Trans America Athletic
Home Court (Capacity):
 GSU Sports Arena (5,500)
Sports Information Contact:
 Heather Czczok
Office Phone: (404) 651-2071
Home Phone: (404) 985-6533
Press Row Phone: (404) 651-3169
Head Coach: Brenda Paul
 North Georgia, 1977
Career Record: 271-179 (15 years)
Record at GSU: 41-70 (4 years)
Coach's Phone: (404) 651-3169
Assistant Coach: Ann Lashley
Letterwinners Ret./Lost: 5/6
Starters Ret./Lost: 3/2
1992-93 Overall Record: 12-16
Conference Record/Finish: 7-5/2nd place
Series Record: First Meeting
Last Meeting: First Meeting



**Head Coach
Brenda Paul**



GAME 9 Possible Opponent vs. Illinois January 3, 1/3 p.m. PORTLAND SHOOTOUT Portland, Maine

Location: Urbana-Champaign, Ill.
Founded: 1867
Enrollment: 34,000
President: Stanley O. Ikenberry
Athletic Director: Ron Guenther
Nickname: Fighting Illini
Colors: Orange and Blue
Conference: Big Ten
Home Court (Capacity):
 Huff Hall (4,500)/Assembly Hall (16,152)
Sports Information Contact:
 Kent Brown
Office Phone: (217) 244-6533
Home Phone: (217) 384-6486
Press Row Phone: (217) 244-0089
Head Coach: Kathy Lindsey
 Ohio State, 1978
Career Record: 30-53 (3 years)
Record at Illinois: Same
Coach's Phone: (217) 333-8612
Assistant Coaches: Yulonda Wimbish
 Cindy Stein
 Dana Eikenberg
Letterwinners Ret./Lost: 8/5
Starters Ret./Lost: 4/1
1992-93 Record (Conference): 12-15 (7-11)
Series Record: First meeting
Last Meeting: First meeting

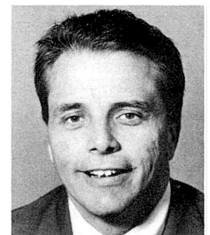


**Head Coach
Kathy Lindsey**



GAME 9 Possible Opponent vs. Kent State January 3, 1/3 p.m. PORTLAND SHOOT-OUT Portland, Maine

Location: Kent, Ohio 44242
Founded: 1910
Enrollment: 33,307
President: Dr. Carol A. Cartwright
Athletic Director: Paul Amodio
Nickname: Lady Flashes
Colors: Navy Blue and Gold
Conference: Mid-American
Home Court (Capacity):
 M.A.C. Center (6,327)
Sports Information Contact:
 Greg Seiler
Office Phone: (216) 672-2110
Home Phone: (216) 673-6456
Press Row Phone: (216) 672-2036
Head Coach: Bob Lindsay
 Massachusetts, 1976
Career Record: 60-55 (4 years)
Record at Kent State: Same
Coach's Phone: (216) 672-3717
Assistant Coaches: Lori Bodnar
 Tammy Shain
 Brenda Frese
Letterwinners Ret./Lost: 9/2
Starters Ret./Lost: 4/1
1992-93 Record (Conference): 20-9 (12-6)
Series Record: First Meeting
Last Meeting: First Meeting



**Head Coach
Bob Lindsay**



Meet The Opponents

GAME 10 vs. Columbia January 7, 7 p.m. New York, N.Y.

Location: New York, N.Y. 10027
Founded: 1754
Enrollment: 4,800
President: Dr. George E. Rupp
Athletic Director: John A. Reeves
Nickname: Lions
Colors: Columbia Blue and White
Conference: Ivy League
Home Court (Capacity):
 Levien Gymnasium (3,408)
Sports Information Contact:
 Lori C. Zalbowitz
Office Phone: (212) 854-2534
Home Phone: Not Available
Press Row Phone: (212) 854-2534
Head Coach: Kerry Phayre
 Providence, 1983
Career Record: 11-41 (2 years)
Record at Columbia: Same
Coach's Phone: (212) 854-8861/8862
Assistant Coach: Susan Cahill
Letterwinners Ret./Lost: 8/7
Starters Ret./Lost: 2/3
1992-93 Record (Conference): 7-19 (1-13)
Series Record: First Meeting
Last Meeting: First Meeting



**Head Coach
Kerry Phayre**



GAME 11 vs. Manhattan College January 9, 2 p.m. New York, N.Y.

Location: Riverdale, N.Y.
Founded: 1853
Enrollment: 3,616
President: Brother Thomas Scanlan, FSC
Athletic Director: Robert J. Byrnes
Nickname: Lady Jaspers
Colors: Kelly Green and White
Conference: Metro Atlantic Athletic Conf.
Home Court (Capacity):
 Draddy Gymnasium (3,000)
Sports Information Contact:
 Jeff Bernstein
Office Phone: (718) 920-0228
Home Phone: (212) 920-0227
Press Row Phone: TBA
Head Coach: Michele Sharp
 West Chester, 1984
Career Record: 72-77 (6 years)
Record at Manhattan: 12-15 (1 year)
Coach's Phone: (718) 920-0935
Graduate Assistant: Michele Brusseau
Letterwinners Ret./Lost: 10/1
Starters Ret./Lost: 5/0
1992-93 Record (Conference): 12-15 (6-8)
Series Record: Maine leads, 1-0
Last Meeting: Maine, 69-57 (1984)



**Head Coach
Michele Sharp**

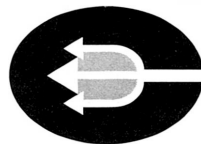


GAME 12 vs. Central Connecticut State January 11, 6 p.m. Orono

Location: New Britain, Conn. 06050
Founded: 1849
Enrollment: 14,000
President: Dr. John Schumaker
Athletic Director: Dr. Judith Davidson
Nickname: Blue Devils
Colors: Blue and White
Conference: East Coast
Home Court (Capacity):
 Detrick Gymnasium (4,000)
Sports Information Contact:
 Kathy Pulek
Office Phone: (203) 827-7824
Home Phone: (203) 667-2193
Press Row Phone: (203) 827-7466
Head Coach: Dr. Brenda Reilly
 Cal State-Los Angeles, 1969
Career Record: 299-278 (23 years)
Record at CCSU: 225-250 (21 years)
Coach's Phone: (203) 827-7364
Assistant Coaches: Duffy Burns
Letterwinners Ret./Lost: 9/3
Starters Ret./Lost: 4/1
1992-93 Record (Conference):
Series Record: Maine leads, 10-2
Last Meeting: Maine 79-52 (2/4/93)



**Head Coach
Dr. Brenda Reilly**

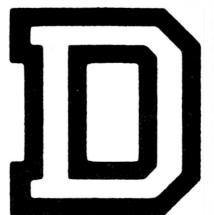


GAME 19 vs. Dartmouth January 31, 5:30 p.m. Hanover, N.H.

Location: Hanover, N.H. 03755
Founded: 1769
Enrollment: 4,000
President: James O. Freedman
Athletic Director: Dick Jaeger
Nickname: Big Green
Colors: Green and White
Conference: Ivy League
Home Court (Capacity):
 Leede Arena (2,100)
Sports Information Contact:
 Mike Mahoney
Office Phone: (603) 646-2468
Home Phone: (603) 643-5034
Press Row Phone: (603) 646-2468
Head Coach: Chris Wielgus
 Springfield, 1974
Career Record: 144-94 (10 years)
Record at Dartmouth: 107-73 (8 years)
Coach's Phone: (603) 646-3194
Assistant Coach: Sharon Dawley
 Laurie Lopes
Letterwinners Ret./Lost: 6/3
Starters Ret./Lost: 3/2
1992-93 Record (Conference): 8-18 (6-8)
Series Record: Maine leads, 5-1
Last Meeting: Maine (OT), 60-59 (1/26/93)



**Head Coach
Chris Wielgus**



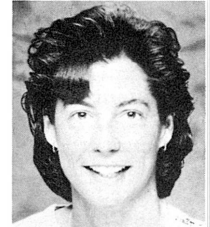
Meet The North Atlantic Conference Opponents

NAC

NORTH ATLANTIC CONFERENCE

GAMES 13 and 26
vs. Drexel
January 14, 7 p.m. @ Philadelphia, Pa.
February 27, 1 p.m. @ Orono

Location: Philadelphia, Pa. 19104
Founded: 1891
Enrollment: 6,191
President: Dr. Richard D. Breslin
Women's AD: Barbara Kilgour
Nickname: Lady Dragons
Colors: Navy Blue and Gold
Conference: North Atlantic
Home Court (Capacity): Physical Education Athletic Center (2,500)
Sports Information Contact: Scott Lowe
Office Phone: (215) 590-8951
Home Phone: (609) 895-0987
Press Row Phone: N/A
Head Coach: Kristen Foley Rutgers, '87
Career Record: 5-22 (1 year)
Record at Drexel: Same
Coach's Phone: (215) 590-8620
Assistant Coaches: Kim Foley
Rita Bernert
Katie Curry
Letterwinners Ret./Lost: 7/4
Starters Ret./Lost: 2/3
1992-93 Overall Record: 5-22
Conference Record/Finish: 1-13/8th place
Series Record: Maine leads, 7-0
Last Meeting: Maine, 66-53 (2/28/93)



**Head Coach
Kristen Foley**



GAMES 14 and 25
vs. Delaware
January 16, 1 p.m. @ Newark, Del.
February 25, 7:30 p.m. @ Orono

Location: Newark, Del. 19716
Founded: 1833 as New Ark College
Enrollment: 15,269
President: Dr. David P. Roselle
Athletic Director: Edgar N. Johnson
Nickname: Fightin' Blue Hens
Colors: Royal Blue and Gold
Conference: North Atlantic
Home Court (Capacity): Bob Carpenter Center (5,000)
Sports Information Contact: Mike Hromyak
Office Phone: (302) 451-2186
Home Phone: (302) 738-2993
Press Row Phone: (302) 451-2168
Head Coach: Joyce Perry Delaware, '73
Career Record: 286-188 (20 years)
Record at Delaware: 233-164 (15 years)
Coach's Phone: (302) 451-8663
Assistant Coaches: Sue Manelski
Joe Rapczynski
Letterwinners Ret./Lost: 8/3
Starters Ret./Lost: 3/2
1992-93 Overall Record: 17-11
Conference Record/Finish: 8-6/4th place
Series Record: Maine leads, 3-1
Last Meeting: Maine, 58-53 (2/26/93)



**Head Coach
Joyce Perry**



GAMES 15 and 24
vs. Vermont
January 20, 7:30 p.m. @ Orono
February 19, 2 p.m. @ Burlington, Vt.

Location: Burlington, Vt. 05401
Founded: 1791
Enrollment: 7,950
President: Thomas P. Salmon
Athletic Director: Richard A. Farnham
Nickname: Catamounts
Colors: Green and Gold
Conference: North Atlantic
Home Court (Capacity): Roy L. Patrick Gymnasium (3,228)
Sports Information Contact: Paul Stanfield
Office Phone: (802) 656-1110
Home Phone: (802) 658-1499
Press Row Phone: (802) 864-6114
Head Coach: Pam Borton Danfance, 1987
Career Record: First Year
Record at Vermont: First Year
Coach's Phone: (802) 656-7695
Assistant Coaches: George Kraus
Nicole Hager
Letterwinners Ret./Lost: 10/3
Starters Ret./Lost: 3/2
1992-93 Overall Record: 28-1
Conference Record/Finish: 14-0/1st place
Series Record: Maine leads, 24-12
Last Meeting: Vermont, 62-45 (1993 NAC Championship)



**Head Coach
Pam Borton**



**GAMES 16 and 23
vs. Hartford
January 22, 2 p.m. @ West Hartford, Conn.
February 17, 7:30 p.m. @ Orono**

Location: West Hartford, Conn. 06117
Founded: 1877
Enrollment: 3,727
President: Humphrey Tonkin
Athletic Director: Pat Meiser-McKnett
Nickname: Lady Hawks
Colors: Scarlet and White
Conference: North Atlantic

Home Court (Capacity):
Sports Center (4,475)
Sports Information Contact:
Andy Bean

Office Phone: (203) 768-4501
Home Phone: (203) 872-1747
Press Row Phone: (203) 768-5042
Head Coach: Allison Jones
St. John's, '81

Career Record: 85-33 (4 years)
Record at Hartford: 11-16 (1 year)
Coach's Phone: (203) 768-5035
Assistant Coaches: Kim Foss
Christine Michalopoulos

Letterwinners Ret./Lost: 7/4
Starters Ret./Lost: 2/3
1992-93 Overall Record: 11-16
Conference Record/Finish: 6-8/5th place
Series Record: Maine leads, 16-1
Last Meeting: Hartford, 66-63 (2/18/93)



**Head Coach
Allison Jones**



**GAME 17 and 22
vs. Boston University
January 27, 7:30 p.m. @ Orono
February 12, 2 p.m. @ Boston, Mass.**

Location: Boston, Mass. 02215
Founded: 1839
Enrollment: 13,842
President: Dr. John Silber
Athletic Director: Gary Strickler
Nickname: Terriers
Colors: Scarlet and White
Conference: North Atlantic

Home Court (Capacity):
Case Gym (2,500)
Sports Information Contact:
Dan Furlong

Office Phone: (617) 353-2872
Home Phone: (617) 739-8984
Press Row Phone: N/A
Head Coach: Chris Basile

University of Massachusetts, '77
Career Record: 147-130 (11 years)
Record at BU: Same
Coach's Phone: (617) 353-4669
Assistant Coaches: Maureen McCormack
Lisa Mikalic

Letterwinners Ret./Lost: 10/2
Starters Ret./Lost:
1992-93 Overall Record: 10-17
Conference Record/Finish: 4-10/6th place
Series Record: Maine leads, 15-14
Last Meeting: BU 64-57 (2/13/93)



**Head Coach
Chris Basile**



**GAMES 18 and 21
vs. Northeastern
January 29, 1 p.m. @ Orono
February 10, 7:30 @ Boston, Mass.**

Location: Boston, Mass. 02115
Founded: 1898
Enrollment: 12,500
President: Dr. John A. Curry
Athletic Director: Barry Gallup
Nickname: Huskies
Colors: Red and Black
Conference: North Atlantic

Home Court (Capacity):
Cabot Gym (3,000)
Sports Information Contact:
Jack Grinold/Shelagh Braley

Office Phone: (617) 437-2691
Braley Home Phone: (617) 373-6116
Grinold Home Phone: (617) 782-5268
Press Row Phone: N/A
Head Coach: Joy Malchodi
Ithaca, '70

Career Record: 233-238 (17 years)
Record at NU: 174-184 (13 years)
Coach's Phone: (617) 437-2702
Assistant Coaches: Molly Perdue
Crystal Houston

Letterwinners Ret./Lost: 10/2
Starters Ret./Lost: 3/2
1992-93 Overall Record: 14-14
Conference Record/Finish: 9-5/3rd place
Series Record: Northeastern leads, 14-12
Last Meeting: Maine, 44-43 (1993 NAC Semifinals)



**Head Coach
Joy Malchodi**



**GAMES 20 and 267
vs. New Hampshire
February 5, 1 p.m. @ Durham, N.H.
March 2, 7:30 p.m. @ Orono**

Location: Durham, N.H. 03824
Founded: 1866
Enrollment: 12,250
President: Dr. Dale Nitzschke
Women's AD: Dr. Judith L. Ray
Nickname: Wildcats
Colors: Blue and White
Conference: North Atlantic

Home Court (Capacity):
Lundholm Gym (3,500)
Sports Information Contact:
Lisa Markley

Office Phone: (603) 862-3835
Home Phone: (603) 472-2344
Press Row Phone: (603) 862-3181
Head Coach: Kathy Sanborn
New Hampshire, '79

Career Record: 195-118 (12 years)
Record at UNH: 106-80 (7 years)
Coach's Phone: (603) 862-3831
Assistant Coaches: Rose Peeples
Deb Rearden
Laura Seiden

Letterwinners Ret./Lost: 9/5
Starters Ret./Lost: 2/3
1992-93 Overall Record: 18-8
Conference Record/Finish: 10-4/2nd place
Series Record: Maine leads, 18-13
Last Meeting: Maine 59-55 (1993 NAC Quarterfinals)



**Head Coach
Kathy Sanborn**



The North Atlantic Conference

The North Atlantic conference celebrates its fifteenth year of existence with the advent of the 1993-94 academic year. Having endured numerous transformations in the first decade, the league enters its silver anniversary year full of promise. The membership of this eight-member conference is comprised of Boston University, University of Delaware, Drexel University, University of Hartford, University of Maine, University of New Hampshire, Northeastern University and University of Vermont.

Established in 1979 as the ECAC North, the conference at that time, consisted of ten institutions and sponsored league competition only in men's basketball, with the champion having an automatic bid to the NCAA Division I Championship. Men's basketball remained the only league sport until the 1987-88 academic year. At that time, the Board of Directors made a new commitment to the conference, establishing a conference office, hiring a full-time commissioner and embarking on a building program which, by the beginning of the 1992-93 academic year, sponsored championship play in 10 men's and 10 women's sports. Stuart P. Haskell, Jr., who served as Director of Athletics at the University of Maine between 1982 and 1987, was employed as the North Atlantic's first Commissioner.

Currently, the NAC conducts men's championships in baseball, basketball, cross country, golf, indoor track, lacrosse, outdoor track, soccer, swimming and tennis.

The North Atlantic Conference Board of Directors voted to include women's athletics in the conference structure at the beginning of the 1988-89 academic year. Women's athletics have thrived under NAC sponsorship, with 10 sports currently sponsored by the conference. They include basketball, cross country, field hockey, indoor track, outdoor track, soccer, softball, swimming, tennis and volleyball.

NAC teams quickly established a record of success which enabled the conference to earn automatic-qualifier status into four NCAA Championships: Baseball, Men's Basketball, Field Hockey and Men's Soccer. With NCAA championships expanding to include all conference champions, NAC titleholders in Women's Basketball will join this elite group beginning with the 1993-94 academic year. Also beginning this year, the conference's softball champion will participate in the NCAA's new 'play-in' concept, in which the NAC titleholder will meet the champion of the Northeast Conference. The winner of the series will earn a bid to the NCAA Softball tournament. If sponsorship within the NAC ex-



Chrissy Strong receives instruction from Coach Joanne Palombo.

pands to six or more teams in Volleyball, that champion will also enjoy automatic-qualifier status. Only a handful of the nation's 32 Division I conferences will have as many of their champions in NCAA post-season play.

In addition to supporting and recognizing success on the playing field, the NAC also sponsors one of the most expansive programs of citing academic successes among its student athletes. All varsity team members who earn Dean's List honors during their playing season receive recognition and awards. Additionally, the conference annually determines the top Scholar-Athlete in each of its twenty championship sports. Last year, 380 NAC athletes were recognized for their achievements in the classroom.

1993's NBA draft saw two NAC basketball players selected in the first two rounds when Vin Baker of Hartford was chosen as the eighth pick overall by the Milwaukee Bucks. Delaware's Spencer Dunkley went to the Indiana Pacers in the second round.

Other highlights of 1992-93 included Vermont Women's Basketball recording their second-consecutive undefeated regular season and earning their second-straight at-large bid to the NCAA tournament. Hartford's Women's Soccer team posted a 19-2 record en route to reaching the semifinals of the NCAA Division I Tournament. Allison Poulin of the University of New Hampshire and Boston University's Christine Steif each earned All-America honors last year in outdoor and indoor track, respectively.

In terms of numbers, the North Atlantic conference is the largest NCAA Division I conference in the Northeast. Its member institutions collectively have more undergraduate students, faculty, staff and alumni than any other conference in the area. Its expansive campuses are located in three major cities (Boston, Hartford and Philadelphia) and in four rural locations (Orono, Maine; Burlington, Vermont; Durham, New Hampshire; and Newark, Delaware).

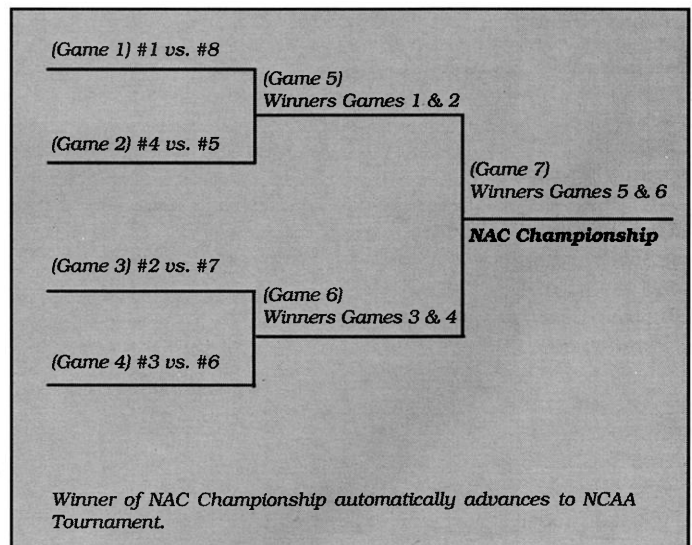
NAC

NORTH ATLANTIC CONFERENCE



North Atlantic Conference Composite Schedule

Thursday, January 13	Northeastern @ Vermont	7:30 p.m.	Friday, February 18	Northeastern @ Delaware	7 p.m.
	Boston University @ Hartford	7 p.m.		Boston University @ Drexel	7 p.m.
Friday, January 14	Maine @ Drexel	7 p.m.	Saturday, February 19	Maine @ Vermont	2 p.m.
	New Hampshire @ Delaware	7 p.m.		New Hampshire @ Hartford	2 p.m.
Saturday, January 15	Boston University @ Vermont	2 p.m.	Sunday, February 20	Boston University @ Delaware	1 p.m.
	Hartford @ Northeastern	1 p.m.		Northeastern @ Drexel	1 p.m.
Sunday, January 16	Maine @ Delaware	1 p.m.	Thursday, February 24	Vermont @ Northeastern	7:30 p.m.
	New Hampshire @ Drexel	1 p.m.		Hartford @ Boston University	7:30 p.m.
Thursday, January 20	Vermont @ Maine	7:30 p.m.	Friday, February 25	Delaware @ Maine	7:30 p.m.
	Hartford @ New Hampshire	7 p.m.		Drexel @ New Hampshire	7 p.m.
Friday, January 21	Delaware @ Boston University	7:30 p.m.	Saturday, February 26	Vermont @ Boston University	2 p.m.
	Drexel @ Northeastern	7:30 p.m.		Northeastern @ Hartford	2 p.m.
Saturday, January 22	New Hampshire @ Vermont	2 p.m.	Sunday, February 27	Drexel @ Maine	1 p.m.
	Maine @ Hartford	2 p.m.		Delaware @ New Hampshire	1 p.m.
Sunday, January 23	Delaware @ Northeastern	1 p.m.	Wednesday, March 2	New Hampshire @ Maine	7:30 p.m.
	Drexel @ Boston University	1 p.m.		Delaware @ Drexel	5:45 p.m.
Thursday, January 27	Boston University @ Maine	7:30 p.m.		Boston Univ. @ Northeastern	7:30 p.m.
	Northeastern @ New Hampshire	7 p.m.		Hartford @ Vermont	7:30 p.m.
Friday, January 28	Vermont @ Delaware	7:30 p.m.	Sunday, March 6	<i>North Atlantic Conference Tournament</i>	
	Hartford @ Drexel	7 p.m.		<i>Quarterfinals</i>	
Saturday, January 29	Northeastern @ Maine	1 p.m.		<i>1 p.m.</i>	
	New Hampshire @ Boston Univ.	2 p.m.	Thursday, March 10	<i>North Atlantic Conference Tournament</i>	
Sunday, January 30	Vermont @ Drexel	1 p.m.		<i>Semifinals</i>	
	Hartford @ Delaware	1 p.m.		<i>7:30 p.m.</i>	
Saturday, February 5	Vermont @ Hartford	2 p.m.	Saturday, March 12	<i>North Atlantic Conference Tournament</i>	
	Maine @ New Hampshire	1 p.m.		<i>Championship</i>	
	Drexel @ Delaware	1 p.m.		<i>2 p.m.</i>	
	Northeastern @ Boston Univ.	2 p.m.			
Thursday, February 10	Maine @ Northeastern	7:30 p.m.			
	Boston Univ. @ New Hampshire	7 p.m.			
Friday, February 11	Drexel @ Vermont	7:30 p.m.			
	Delaware @ Hartford	7 p.m.			
Saturday, February 12	Maine @ Boston University	2 p.m.			
	New Hampshire @ Northeastern	1 p.m.			
Sunday, February 13	Delaware @ Vermont	1 p.m.			
	Drexel @ Hartford	1 p.m.			
Thursday, February 17	Vermont @ New Hampshire	7:30 p.m.			
	Hartford @ Maine	7:30 p.m.			



Alfond Sports Arena

The Harold Alfond Sports Arena, one of the finest all-purpose facilities in the northeast, was completed in February of 1977. Thanks to the generosity of Mr. Harold Alfond, the Arena allows basketball to return to campus in a modern, up-graded facility.

The Black Bears have played in front of crowds packed into Memorial Gymnasium on the Orono campus. UMaine spectatorship enabled the Black Bear home court to be noted in *Sports Illustrated* as one of the top 10 most difficult gyms to play in, in the seventies.

Mr. Alfond, who has contributed over four million dollars to the University since 1968, donated two million dollars for the expansion. Mr. Alfond's gift represents the largest one-time (non-posthumous) cash contribution ever bestowed upon the University. Over 2,000 people, headed by Mr. Alfond donated funds for the original construction the complex.

The expansion created 70-foot by 140-foot additions to the east and west sides of the Arena allowing for the installation of 1,200 seats. The construction raises the capacity to 5,200 for hockey and 6,000 for basketball.

Included in the Arena expansion are additional concession areas and rest rooms, locker rooms, ticket offices, souvenir stands and improved media facilities. A storage area will also be built for the new basketball court to be used in the building.



The Alfond Sports Arena expansion brought basketball back to campus for the 1991-92 season.

Aside from being UMaine's home court, the Arena is used by high school and youth hockey leagues, and for concerts and graduation ceremonies.

The complex is a modern facility with virtually no obstructed-view seats in the building and an excellent view of the court.

The following services are offered at Alfond Arena:

Public Telephones: Pay phones are located in the lobby of the arena.

Concession Stands: Located at both the east and west sides of the arena.

Rest Rooms: Located underneath the east and west side bleachers.

Public Address: Announcements under emergency situations may be made. To make an emergency announcement report to the press row area. We regret that announcements of a personal nature will not be made.

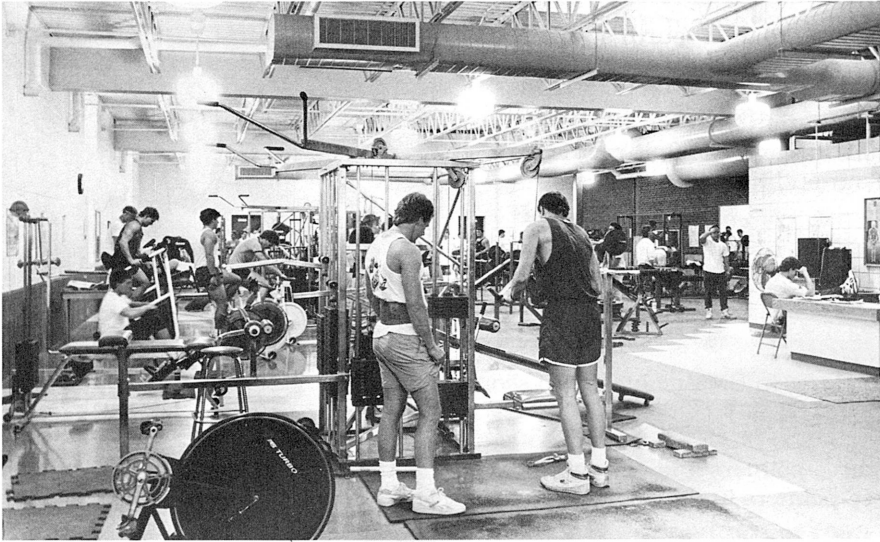
First Aid: Medical attendants are present at each game and can be found at the south end of the arena.



Alfond Sports Arena: Home of the Black Bears.



The Facilities



The Michael B. and Georgia D. Latti Fitness Center.

A modern training facility to service the University community was completed in June of 1990. The new facility is more than double the size of the old facility. The 1,800-foot room also features top equipment to serve the 200 recreational and varsity athletes who use the facility each day. The wet area of the room includes a freezer with ice making capabilities and three whirlpools. The facility also houses seven plinths and a taping area for 30 athletes.

The University employs three full-time trainers to assist with athletic coverage. Approximately 15 student-trainers also help in the coverage of practices and home events.



The Michael Kessock Sports Medicine Center.



The Edith Ness Women's Basketball Suite.

Completion of the \$1.2 million Memorial Gymnasium Renovation and Addition Project has given the University of Maine some of the finest athletic facilities in the Northeast.

The Michael B. and Georgia D. Latti Fitness Center was dedicated at a ceremony on October 6, 1989. The 6,000-foot facility next to Wallace Pool contains a weight room and training facility which serves an estimated 500 students, faculty and members of the surrounding community each day. The skylighted facility is home to tons of free weights, a Universal gym, life cycles and other exercise equipment.

The women's basketball team also received new locker room facilities as part of the expansion project.

The Edith Ness Women's Basketball Suite was made possible by the generous donation of Mrs. Edith Talbot Ness, class of 1932, a loyal fan and dedicated alumna who is devoted to excellence at the University of Maine.

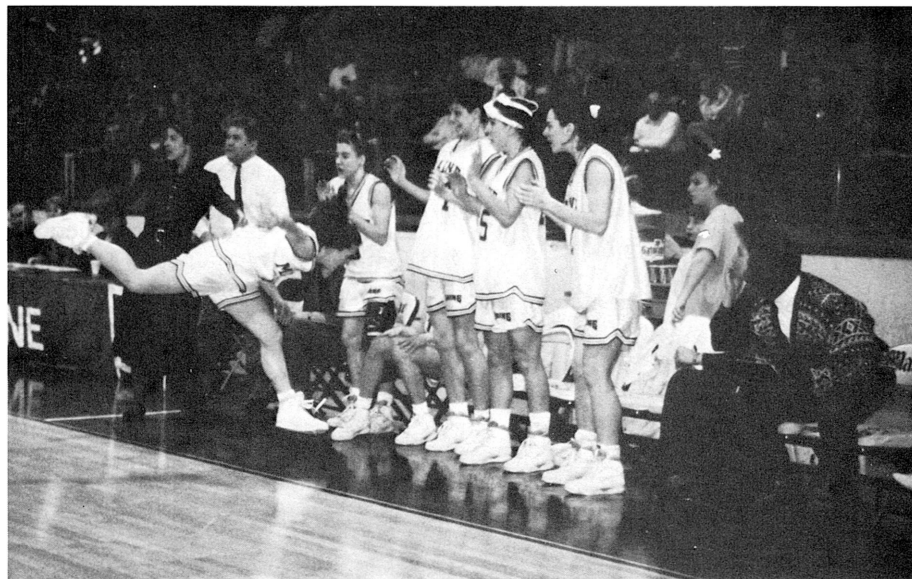
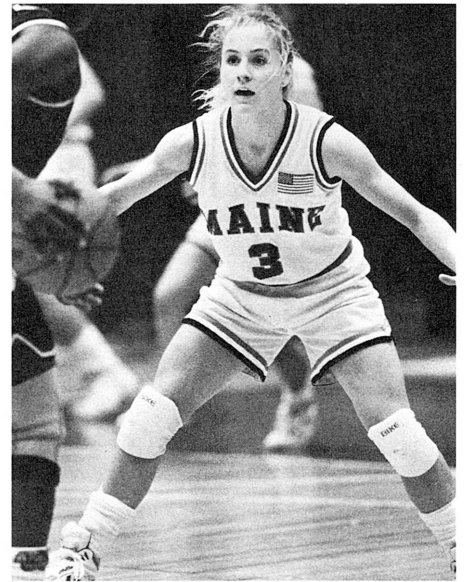
The locker room contains 20 oak box-style lockers with upper compartments in which valuables and equipment may be stored. There is also a shower room and bathroom area.

The plush carpeting and attractive architecture make this a premier locker room facility.



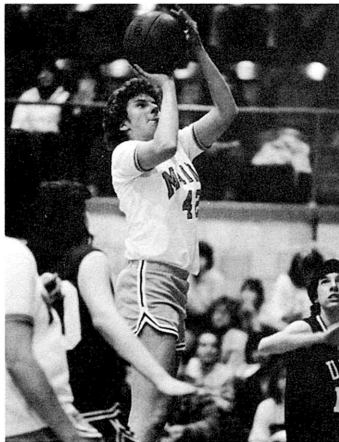
Did You Know . . . ?

- ... that in 1992-93 the UMaine Women advanced to their fourth straight North Atlantic Conference Championship game?
- ... that the UMaine Women, after losing four starters from the 1991-92 team, while learning from a new coaching staff, became the first-ever lower seeded team to reach the conference Final Four and NAC Championship game?
- ... that first-year phenom, Stephanie Guidi, was named NAC Rookie of the Week three times, ECAC Rookie of the Week once, and was named to the NAC All-Tournament and NAC All-Rookie teams?
- ... that Heather Briggs became the seventh player in UMaine history to score over 1,000 points in a career?
- ... that Briggs set a school record with 42 three-pointers and tied the conference tournament record with four three-pointers in the final?
- ... that Guidi and Stacia Rustad received All-Tournament honors at the Maine Tip-Off Classic and that Guidi received the same honor at the Bell Atlantic Holiday Classic?
- ... that in 1992-93, five players were named to the NAC Academic Honor Roll for achievement in the classroom?
- ... that Guidi led the NAC with an 83% free-throw percentage?
- ... that UMaine has consistently played the most challenging schedule in the conference?
- ... that while competing in the NAC, UMaine has won the conference regular-season title twice and the conference tournament title twice?
- ... that in 1989-90 the UMaine Women became the first team in the conference to qualify for post-season play, advancing to the National Women's Invitational Tournament in Amarillo, Texas?
- ... that UMaine has ranked as high as 17th nationally in attendance?
- ... that Rachel Bouchard (Class of 1991) is the All-Time Leading Scorer in New England?
- ... that Head Coach Joanne Palombo is a Maine native and the fourth head coach in the history of the program **and** that she has coached in two National Championships **and** coached two Olympians while assisting at Auburn University in Alabama?

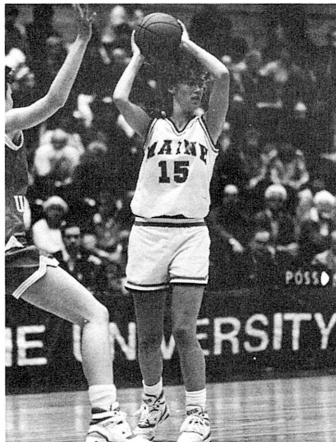


- ... that the UMaine Women will play their second full season in the 6,200 seat Alford Sports Arena?
- ... that UMaine has had three District I Kodak All-Americans (Liz Coffin, Emily Ellis and Rachel Bouchard) and one Regional Kodak All-American (Rachel Bouchard)?
- ... that UMaine players have earned two Rookie of the Year Awards, five All-Rookie Team Awards and two Player of the Year Awards in the NAC?

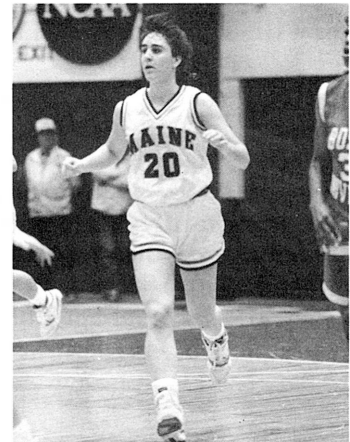




LAUREE GOTT - 1982-87



TRACEY FRENETTE - 1988-92

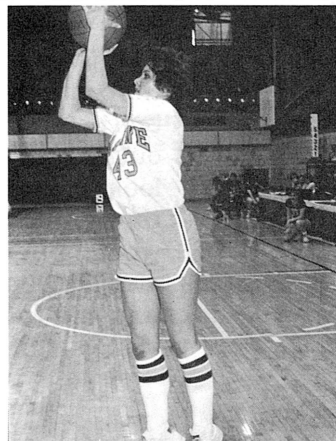


HEATHER BRIGGS - 1989-93

Year	FG/FGA	FT/FTA	REB	PTS	PPG
82-83	74/197	57/88	221	211	7.5
84-85	106/195	49/65	130	261	8.7
85-86	182/363	69/103	211	433	14.9
86-87	192/364	104/138	219	488	17.4
Totals	554/1119	279/394	781	1393	12.1

Year	FG/FGA	FT/FTA	REB	PTS	PPG
88-89	85/199	53/96	149	233	8.3
89-90	113/252	58/84	166	284	9.5
90-91	121/265	45/70	158	287	10.3
91-92	155/325	80/117	165	390	13.4
Totals	474/1041	236/367	638	1194	10.4

Year	FG/FGA	FT/FTA	REB	PTS	PPG
89-90	72/181	39/51	128	184	6.1
90-91	89/219	45/74	121	241	9.3
91-92	152/344	70/93	233	383	13.2
92-93	139/381	48/77	181	368	12.7
Totals	452/1125	202/295	663	1176	10.3



LISA CORMIER - 1980-84

Year	FG/FGA	FT/FTA	REB	PTS	PPG
80-81	93/174	8/11	51	179	7.8
81-82	105/217	26/38	98	219	10.0
82-83	128/313	31/35	143	291	10.4
83-84	165/363	33/40	100	363	22.4
Totals	491/1067	98/124	392	1052	10.8



Attending the University of Maine gave me an opportunity to play a competitive Division I schedule while representing my home state. The campus atmosphere allowed me to grow not only as an athlete but more importantly as a person.

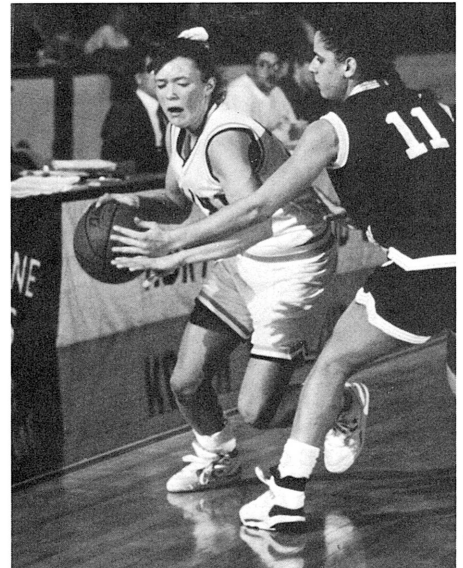
**Rachel Bouchard - Class of 1991
First-year, Portland School of Law**



**Rachel Bouchard - Class of 1991; First-year law student
Portland School of Law**

I chose the University of Maine to pursue both my academic and athletic goals because it is a great school, rich in tradition in women's basketball. Being a state university, and the only Division I program in Maine, I saw it as a great opportunity to be part of a great program and also represent my home state.

Seana Dionne - Class of 1995



Seana Dionne - Class of 1995

As a local resident, I have long been impressed with the community spirit focused on the women's basketball program here at the University of Maine. Coming out of high school, none of the other colleges I was looking at could compare. When faced with an opportunity to receive a quality education, be a part of a winning tradition and play basketball of this caliber with a group of women I admire so much... the chance was just too good to pass up.

Rita Sullivan - Class of 1995



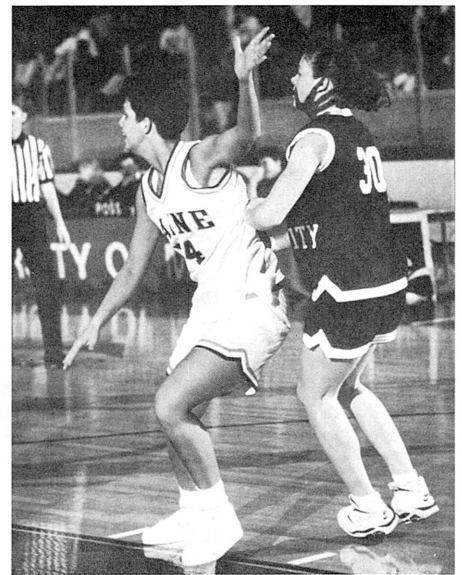
Why UMaine?



**Heather Briggs - Class of 1993;
UMaine Student Assistant**

One of the many reasons I chose UMaine was because of the tradition that the women's basketball team has in academic standings of all athletic teams on campus. Being surrounded by academic and athletic people here, I knew my four years here at UMaine as a student-athlete would be very memorable. I am pursuing a speech communication degree and hope to help carry on the successful tradition here at UMaine.

**Heather Briggs - Class of 1993
Student Assistant Coach**



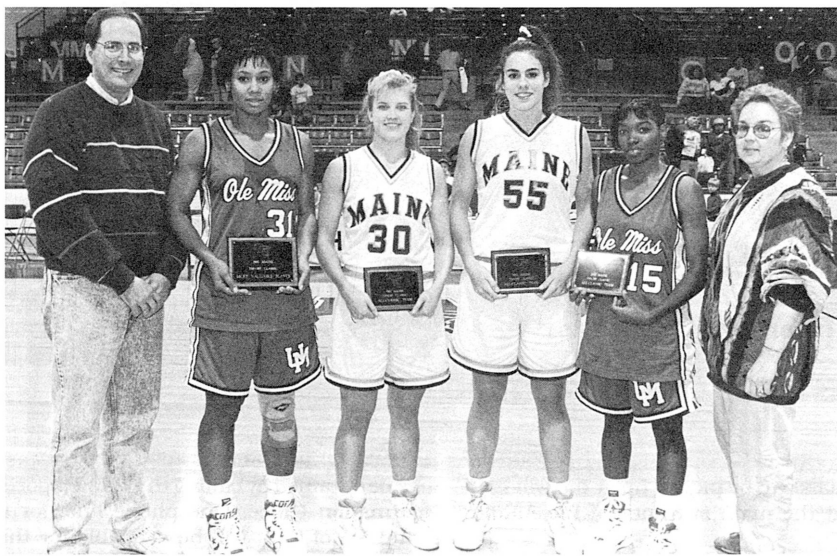
Cyndi Buetow - Class of 1994

My decision to attend the University of Maine gave me the opportunity to escape the frivolous distractions of the urban universities and to concentrate on my studies in a relaxed atmosphere. Becoming a part of a Division I caliber team, such as the women's basketball team here at Maine, gave me the distinct advantage of being presented as a dedicated female athlete, an enterprising student and a woman determined to make her mark on the world.

Erin Grealy - Class of 1995

UMaine women's basketball has a tradition of commitment to both academics and athletics. The team unity not only helps make all the hard work worth it, but it has helped give me a home away from home.

**Cyndi Buetow - Class of 1994
Tri-Captain**



Maine director of athletics, Mike Ploszek (far left) and honorary coach Tabitha King with Stacia Rustad (middle left) and Steph Guidi (middle right), Class of 1996, at the 1992 Maine Tip-Off Classic.

It is a special time in this program's history that we are about to experience. Women's basketball at UMaine under the new exciting leadership of Joanne Palombo and her staff embodies the values, energy and enthusiasm that will enable this program to shine for years to come.

**Michael Ploszek - Director of Athletics,
University of Maine**

The main reason I chose the University of Maine was the fact that it was a great, new experience for me. It is the first time being miles away from home and on my own. I like the beautiful campus and the atmosphere is very comfortable and welcoming.

**Catherine Gallant
Class of 1996**

I picked the University of Maine because I really liked the campus and the environment that it's in. It's a lot like home back in Alaska. In addition, my teammates are great, and the athletic and academic programs are both really good.

Stacia Rustad - Class of 1996



Black Bear Primary Media

NEWSPAPERS

Pete Warner
Sports Department
Bangor Daily News
491 Main Street
Bangor, ME 04401
(207) 990-8238 (office)
(207) 990-8092 (home)

Chad Finn
Maine Campus
Lord Hall
University of Maine
Orono, ME 04469
(207) 581-1268 (office)
(207) 581-1275 (fax)

Roberta Scruggs
Sports Department
Portland Press Herald
P.O. Box 1460
Portland, ME 04104
(207) 780-9000 (office)
(207) 780-7334 (fax)

Nate Dow
Sports Editor
Lewiston Sun
104 Park Street
Lewiston, ME 04240
(207) 784-5411 (office)
(207) 784-5955 (fax)

Joe Burriss
Sports Department
Boston Globe
135 Morrissey Blvd.
Boston, MA 02107
(617) 929-3235 (office)
(617) 929-2670 (fax)

Bob Sales
Sports Editor
Boston Herald
One Herald Square
Boston, MA 02106
(617) 426-3000
(617) 542-1314 (fax)

RADIO/ TELEVISION

Tim Throckmorton
Sports Director
WABI-TV
35 Hildreth Street
Bangor, ME 04401
(207) 947-8325 (office)
(207) 941-9378 (fax)

Lee Goldberg
Sports Director
WLBZ-TV
P.O. Box 415
Bangor, ME 04402-0415
(207) 942-4821 (office)
(207) 942-2109 (fax)

Eric Frede
Sports Director
WVIT-TV
371 Target Indus. Cir.
Bangor, ME 04401
(207) 945-6457 (office)
(207) 942-0511 (fax)

WMEB-FM
5725 East Annex
University of Maine
Orono, ME 04469
(207) 581-2336 (office)

Tom Caron
Sports Director
WGME-TV
Northport Plaza
Portland, ME 04104
(207) 797-9099 (office)
(207) 878-3505 (fax)

Steve Minich
Sports Director
WMTW-TV
Poland Springs, ME
04210
(207) 782-5959 (office)
(207) 782-2165 (fax)

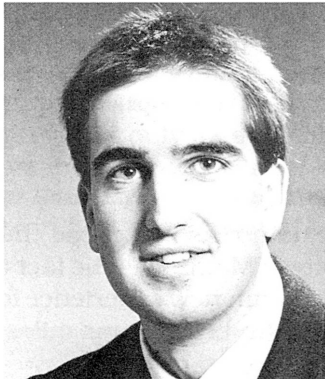
Dave Eid
WPXT-TV
2320 Congress St.
Portland, ME 04102
(207) 774-0051 (office)
(207) 761-9794 (fax)

Bruce Glasier
WCSH-TV
1 Congress Square
Portland, ME 04101
(207) 828-6666 (office)
(207) 828-6630 (fax)

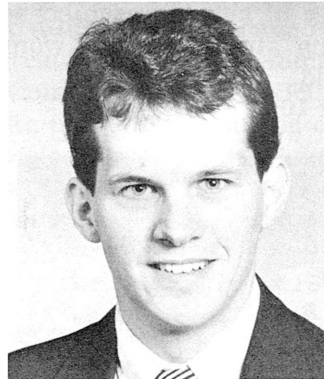
Sally Clark
Production
WCSH-TV
P.O. Box 4050A
Portland, ME 04104

Kim Mitchell
Sports Director
UMaine Public Affairs
5761 Public Affairs
Orono, ME 04469-5761
(207) 581-3770

Dale Duff
Maine Talk Radio
P.O. Box 1929
Bangor, ME 04401
(207) 942-4656



MATT BOURQUE
Sports Information
Director



JOE ROBERTS
Assistant Sports
Information Director



DIANE MADL
WBB Sports Information
Contact

Information for the Media

The University of Maine Sports Information Staff extends a cordial welcome to all working media covering our home games. We appreciate the coverage you give us, and we will do everything possible to assist you in your game duties. In order to create the best possible situation, please observe the following:

CREDENTIALS: All credential requests should be directed to the Sports Information Office, 5747 Memorial Gym, University of Maine, Orono, ME 04469 (207) 581-1086. Credentials to be mailed should be requested

at least two weeks in advance. All other credentials can be picked up at the will-call booth at the main entrance of the Alford Arena.

INTERVIEWS: All requests for interviews, either in person or via phone, must be approved by the Maine Sports Information Office, and should be directed through the Sports Information Director. Post-game interviews will be conducted 10-minutes after the game, immediately outside the lockerrooms.

RADIO POLICY: Permission to broadcast may be obtained by calling the Maine Sports Information Office. One phone line, for a rental fee of \$75, will be available for the visiting school. Other lines may be obtained by calling the Sports Information Office. All calls on these lines should be collect or billable to the user.

PRESS PARKING: A section of VIP parking has been reserved for members of the media.





MAINE WOMEN'S BASKETBALL



1993-94 University of Maine Women's Basketball

Day	Date	Time	Opponent	Site
Sunday	November 28	2:00	Boston College	Orono
Friday	December 3		<i>DEAD RIVER COMPANY TIP-OFF CLASSIC</i>	
		6:00	Northwestern State vs. Army	
		8:00	Maine vs. Long Island	Orono
Saturday	December 4	6:00	Consolation game	
		8:00	Championship game	Orono
Saturday	December 11		<i>MINNESOTA DIAL CLASSIC</i>	
		6:00	Maine vs. Boise State	
		8:00	Minnesota vs. Chicago State	Minneapolis, Minn.
Sunday	December 12	1:00	Consolation game	
		3:00	Championship game	Minneapolis, Minn.
Tuesday	December 28	7:30	at University of Buffalo	Buffalo, N.Y.
Wednesday	December 29	7:00	at St. Bonaventure	St. Bonaventure, N.Y.
Sunday	January 2		<i>PORTLAND SHOOT-OUT</i>	
		12:00	Illinois vs. Kent State	
		2:00	Maine vs. Georgia State	Portland
Monday	January 3	1:00	Consolation game	
		3:00	Championship game	Portland
Friday	January 7	7:00	at Columbia	New York, N.Y.
Sunday	January 9	2:00	at Manhattan College	New York, N.Y.
Tuesday	January 11	6:00	Central Connecticut State	Orono
Friday	January 14	7:00	at Drexel	Philadelphia, Pa.
Sunday	January 16	1:00	at Delaware	Newark, Del.
Thursday	January 20	7:30	Vermont	Orono
Saturday	January 22	2:00	at Hartford	West Hartford, Conn.
Thursday	January 27	7:30	Boston University	Orono
Saturday	January 29	1:00	Northeastern	Orono
Monday	January 31	5:30	at Dartmouth	Hanover, N.H.
Saturday	February 5	1:00	at New Hampshire	Durham, N.H.
Thursday	February 10	7:30	at Northeastern	Boston, Mass.
Saturday	February 12	2:00	at Boston University	Boston, Mass.
Thursday	February 17	7:30	Hartford	Orono
Saturday	February 19	2:00	at Vermont	Burlington, Vt.
Friday	February 25	7:30	Delaware	Orono
Sunday	February 27	1:00	Drexel	Orono
Wednesday	March 2	7:30	New Hampshire	Orono
Sunday	March 6	TBA	NAC Quarterfinals	TBA
Thursday	March 10	TBA	NAC Semifinals	TBA
Saturday	March 12	TBA	NAC Championship	TBA