

The University of Maine

DigitalCommons@UMaine

General University of Maine Publications

University of Maine Publications

11-1-1992

1992-93 University of Maine Women's Basketball Media Guide

Maine Sports Information Office

Follow this and additional works at: https://digitalcommons.library.umaine.edu/univ_publications



Part of the [Higher Education Commons](#), and the [History Commons](#)

Repository Citation

Maine Sports Information Office, "1992-93 University of Maine Women's Basketball Media Guide" (1992). *General University of Maine Publications*. 3080.

https://digitalcommons.library.umaine.edu/univ_publications/3080

This Media Guide is brought to you for free and open access by DigitalCommons@UMaine. It has been accepted for inclusion in General University of Maine Publications by an authorized administrator of DigitalCommons@UMaine. For more information, please contact um.library.technical.services@maine.edu.

Maine



1992-93 University of Maine Women's Basketball Numerical Roster

<u>No.</u>	<u>Player</u>	<u>Cl.</u>	<u>Ht.</u>	<u>Pos.</u>	<u>Previous School/ Hometown</u>
3	Chrissy Strong *	Jr.	5-7	G	Georges Valley/Thomaston, Me.
5	Katti Towle	Jr.	5-4	G	Gorham/Gorham, Me.
10	Erin Grealy *	So.	5-9	G	Medford/Medford, Mass.
15	Catherine Gallant	Fr.	5-11	F	John Abbot/Pincourt, QUE
20	Heather Briggs *	Sr.	5-10	F	Biddeford/Biddeford, Me.
25	Becky Marsden	Fr.	6-1	F	Mt. Anthony Union/Bennington, Vt.
30	Stacia Rustad	Fr.	5-7	G	Kenai Central/Kenai, Alaska
32	Sara Philbrick *	So.	5-10	G	Loudoun Valley/Hamilton, Va.
33	Seana Dionne*	So.	5-7	G	Stearns/Millinocket, Me.
42	Rita Sullivan *	So.	6-0	F	Bangor/Bangor, Me.
50	Katrina Krom *	So.	6-3	C	West Haven/West Haven, Conn.
51	Stephanie Guidi	Fr.	6-0	F	Carmel/Stormville, N.Y.
54	Cyndi Buetow *	Jr.	6-2	C	Waconia/Cologne, Minn.
55	Trixie Wolf *	So.	6-2	C	Jefferson/Jefferson, Ohio

Head Coach: Joanne Palombo (Northwestern, 1987)

Assistant Coaches: Lamar Boutwell, Kay Abrahamson, Rachel Bouchard

*--denotes returning letterwinners (9)

Alphabetical Roster

<u>No.</u>	<u>Player</u>	<u>Cl.</u>	<u>Ht.</u>	<u>Pos.</u>	<u>Previous School/ Hometown</u>
20	Heather Briggs *	Sr.	5-10	F	Biddeford/Biddeford, Me.
54	Cyndi Buetow *	Jr.	6-2	C	Waconia/Cologne, Minn.
33	Seana Dionne*	So.	5-7	G	Stearns/Millinocket, Me.
15	Catherine Gallant	Fr.	5-10	F	John Abbot/Pincourt, QUE
10	Erin Grealy *	So.	5-9	G	Medford/Medford, Mass.
51	Stephanie Guidi	Fr.	6-0	F	Carmel/Stormville, N.Y.
50	Katrina Krom *	So.	6-3	C	West Haven/West Haven, Conn.
25	Becky Marsden	Fr.	6-1	F	Mt. Anthony Union/Bennington, Vt.
32	Sara Philbrick *	So.	5-10	G	Loudoun Valley/Hamilton, Va.
30	Stacia Rustad	Fr.	5-7	G	Kenai Central/Kenai, Alaska
3	Chrissy Strong *	Jr.	5-7	G	Georges Valley/Thomaston, Me.
42	Rita Sullivan *	So.	6-0	F	Bangor/Bangor, Me.
5	Katti Towle	Jr.	5-4	G	Gorham/Gorham, Me.
55	Trixie Wolf *	So.	6-2	C	Jefferson/Jefferson, Ohio

About The Covers

Front Cover: The 1992-93 tri-captains, #20 Heather Briggs, #54 Cyndi Buetow and #3 Chrissy Strong. Drawing by University of Maine graphic artist, Mike Mardosa.

Back Cover: Back Row (l-r): Head Coach Joanne Palombo, Asst. Coach Lamar Boutwell, Trainer Paula Linder, Trixie Wolf, Becky Marsden, Katrina Krom, Cyndi Buetow, Rita Sullivan, Stephanie Guidi, Asst. Coach Rachel Bouchard, Asst. Coach Kay Abrahamson.

Front Row (l-r): Catherine Gallant, Sara Philbrick, Stacia Rustad, Katti Towle, Chrissy Strong, Erin Grealy, Seana Dionne, Heather Briggs.

BLACK BEAR FACTS

Location: Orono, ME 04469
Founded: 1865
Enrollment: 12,165
Chancellor: Dr. Robert Woodbury
President: Dr. Frederick Hutchinson
Director of Athletics: Michael Ploszek
Faculty Representative: Dr. George Jacobson
Nickname: Black Bears
Colors: Blue and White
NCAA Affiliation: Division I
League Affiliation: North Atlantic Conference
Home Court: Alford Sports Arena (6,000)
Alternate Site: Memorial Gym (2,400)

Head Coach: Joanne Palombo (Northwestern, 1987)
Career Record: First Year
Record at Maine: First Year
Office Phone: (207) 581-4067
Assistant Coaches:
 Lamar Boutwell (207) 581-1075
 Kay Abrahamson (207) 581-1073
 Rachel Bouchard (207) 581-3094

Basketball Trainer: Paula Linder
Equipment Mgr: Muriel Barker
Basketball Secretary: Dianne Gallant

Assoc. AD for Compliance:
 Linwood Carville
Assoc. AD for Intramurals and Recreation:
 Dave Ames
Assoc. AD for Academic Support:
 Margaret Zillioux
Asst. AD for Internal Operations and Finance:
 Anne McCoy
Asst. AD for External Affairs and Development:
 Michael Palisi

Sports Information Director: Matt Bourque
Asst. SID: Joe Roberts
Women's Basketball SID:
 Becky Gibbs
Office Phone: (207) 581-1055
Home Phone: (207) 942-2355
Fax: (207) 581-3297

1992-93 Captains:
 Heather Briggs
 Cyndi Buetow
 Chrissy Strong
Players Returning/Lost: 9/4
Starters Returning: 1
Starters Lost: Julie Bradstreet 10.5 ppg, 3.7 spg
 Jess Carpenter 13.3 ppg, 7.1 rpg
 Tracey Frenette 13.4 ppg, 5.7 rpg
 Carrie Goodhue 7.7 ppg, 3.1 apg

Newcomers: 5
1991-92 Record: 20-9
1991-92 Conference Record: 11-2 (2nd)



CONTENTS

UNIVERSITY INFORMATION

The University of Maine	2
Dr. Frederick Hutchinson, President.....	3
Michael Ploszek, Director of Athletics.....	4
Senior Athletic Administration	5
Athletic Highlights at Maine.....	6
Athletic Academic Support.....	7
Facilities.	38-39
Black Bear Media.	40

COACHING STAFF

Head Coach Joanne Palombo..	8
Coaches Boutwell, Abrahamson and Bouchard.....	9

PLAYER AND TEAM INFORMATION FOR 1992-93

Numerical Roster	IFC
1992-93 Basketball Outlook	10-11
Meet the Maine Women.	12-21
Heather Briggs.....	13
Cyndi Buetow	14
Chrissy Strong.....	15
Seana Dionne	16
Erin Grealy	16
Katrina Krom.....	17
Why Maine?	22-23
Sara Philbrick.....	17
Rita Sullivan.....	18
Katti Towle	18
Trixie Wolf	19
The Newcomers	20-21

STATISTICS, HIGHLIGHTS AND LEAGUE INFO.

1991-92 Statistics and Results	24
1991-92 Season in Review	25
North Atlantic Conference	31

MAINE BASKETBALL HISTORY

Maine Records	26
Maine Year By Year	27
Seventeen Years in Review	28-30

MAINE OPPONENTS

UM Record vs. All Opponents	27
Non-Conference Opponents	32-35
North Atlantic Conference Opponents	36-37

Credits: The 1992-93 University of Maine Women's Basketball Media Guide is published by the Maine Sports Information Office. Written, edited and designed with Aldus PageMaker on the Macintosh SE by Becky Gibbs. Assistance provided by Matt Bourque, Joe Roberts and Jackie Jones. Photographs supplied by John Baer, Monty Rand, Mike York and UMaine Public Affairs. Special thanks to the Maine Center of the Arts and the Hudson Museum for the use of their facilities in player posed photos. Cover designed by Mike Mardosa, Senior Graphic Designer, University of Maine Public Affairs. Printing by University of Maine Printing Services, Arthur Larsen, Director; Monique Hashey, Asst. Director.





The University of Maine

The University of Maine, located in Orono, is the largest campus in the statewide university system. There is plenty of open space on its 1,200 acres, where students are offered the diversity and the challenge of a large university in an invigorating atmosphere of a small college. The campus at Orono is in a classic New England setting, located 10 miles north of Bangor, Maine's third largest city. The region is conveniently located close to ski slopes, outdoor recreation areas and the beautiful Maine coastline.

The University, with a variety of exciting and challenging course opportunities, offers an outstanding faculty. Baccalaureate degree programs are offered through eight colleges: Applied Sciences and Agriculture, Arts and Humanities, Business Administration, Education, Engineering and Technology, Forest Resources, Sciences, and Social and Behavioral Sciences. The campus houses the expansive Raymond Fogler Library and a number of respected research facilities to give the student an excellent learning environment.

Students from 45 states and 74 countries studied at the University last

year, and more than 20 percent of the total enrollment of 12,165 is admitted from outside the state of Maine.

Student activities at the University create an important balance between the classroom experience and the personal life of the individual scholar. There are seven scholastic honor societies, four non-scholastic honor societies, 22 departmental honor societies, 56 associations, clubs and organizations, and six religious groups. Twelve fraternities and seven sororities have chapters in Orono. In short, a variety of opportunities exists for students, both academically and socially, outside the classroom. The Maine Center for the Arts, host to concerts, comedy, theatre, recitals and other popular entertainment, is located on campus and features nationally and world renowned entertainers.

The University offers its students, the community and the state an outstanding athletic tradition. Several Black Bear teams have excelled to regional and national prominence.

Included on Maine's athletic staff is a full-time academic coordinator responsible for closely monitoring the

progress of each of the 600 varsity student-athletes. Coaches also monitor and advise their student-athletes, frequently holding meetings specifically to discuss academic situations. Study halls and special tutorial sessions are scheduled daily as a way to enhance the learning process. This support and close scrutiny has been a significant reason the overall grade point average of student-athletes has been higher than that of the general student body. The primary goal of the University and the athletic department is to see each individual reach his or her academic potential.

The recreation and intramural department offers organized competition in a number of events throughout the year. Students can participate in a variety of sports from basketball, softball and soccer to waterpolo, mountain bike racing and broomball. Open facilities are also available to students for informal play. Maine's 19 Division I athletic teams entertain more than 100 intercollegiate events on campus each year. The University offers students a wide spectrum of opportunities to enhance the overall college experience.





**DR. FREDERICK
HUTCHINSON**
President

By action of the University of Maine System Board of Trustees, Dr. Frederick E. Hutchinson became the 16th president of the University of Maine on April 1, 1992. A native of Atkinson, Maine, Hutchinson was born June 1, 1930. In 1952, he married Dione Williams, and they have two daughters, Juliana and Karen.

Hutchinson earned his bachelor's ('53) and master's degrees in agronomy at the University of Maine. He earned his doctorate in agronomy from Pennsylvania State University.

Hutchinson was praised by the campus community, the media and the citizens of the state for his handling of a strict budget cut in his first month on campus.

In addition, Hutchinson has given his support to the athletic program.

"I subscribe to the idea that athletics are a part of the university's image," said Hutchinson in an interview in *MAINE*, the publication of the University of Maine Alumni Association. "There are very good schools in the country that have built a tremendous image with athletic success.

"I'd like to see us maintain all of our sports, the major sports and the Olympic sports, because we need them both.

What is important to me is to decide at what level we are going to compete and be sure that we are putting our athletes on the playing field with an equal chance."

Prior to returning to the University of Maine, Hutchinson was vice president for Academic Affairs and provost of The Ohio State University. He joined the faculty there in 1985 as director of the Ohio Agricultural Research and Development Center. In 1986, he was named vice president for Agricultural Administration and dean of the College of Agriculture and later became acting provost on July 1, 1989. On Dec. 1, 1989, Hutchinson was permanently appointed to that position. In addition, he was named senior vice president for Academic Affairs and provost on Nov. 2, 1990.

As Ohio State's chief academic officer, Hutchinson was responsible for the academic environment on campus. Among the areas reporting to him were all instructional programs, the library system, the Office of Student Affairs, the Office of Minority Affairs, Continuing Education, the Biotechnology Center, the Graduate School, the Honors Center, ROTC, the Sea Grant College, the SuperComputer Center, the University Press, and the Wexner Center for the Visual Arts. The office also oversaw the promotion and tenure process for members of the faculty and initiated a recent revision to the undergraduate curriculum. Academic Affairs also worked with various offices and groups on campus to develop an action plan for the recruitment and retention of black students and an Hispanic action plan.

Before joining Ohio State, Hutchinson was executive director of the Board of International Food and Agricultural Development of the United States Agency for International Development. Earlier, he was a faculty member and vice president for Research and Public Services at Maine.

Hutchinson joined the faculty at Maine in 1957. He held the positions of Chairman of the Department of Plant and Soil Sciences from 1971-72; Dean of the College of Life Sciences and Agriculture and Director of the Maine

Agricultural Experiment Station from 1972-75; Vice President for Research and Public Services from 1975-80; and acting Vice President for Academic Affairs from 1980-81. He returned to his post as vice president for Research and Public Services from 1981-82, before taking the federal post.

He has authored numerous journal articles, technical bulletins and research articles. In addition, he has presented invitational papers at numerous scientific and professional meetings and has participated in several international programs.

Hutchinson is recognized as a leader among agricultural administrators and was instrumental in building the research program at Maine. He had a positive impact on the significant increase in federal, state and private grant support for research at Maine.

He has served as chairman of the Maine Food and Farm Land Study Commission, the Committee on Erosion and Sediment Control, and the Advisory Committee on the Selection of Coastal Natural Areas. In addition, he served as a member of the Governor's State Energy Resources Advisory Board, the Governor's Committee on Coastal Development Conservation, and the Governor's Land and Water Resources Council.

He has also held the positions of administrative advisor to four regional and inter-regional agricultural experiment station projects; chairman of the Northeast Association of Agricultural Experiment Station Directors and the Joint Committee under the Board of International Food and Agricultural Development.

From 1986-89, he was on the Board of Directors of Agriculture for the National Association of State University and Land Grant Colleges. In 1987, he chaired a panel of the National Academy of Sciences Board on Agriculture before accepting a one-year term as president of the Agricultural Research Institute in Washington, D.C.

Currently, he is a member of the Board of Directors for the International Center for Tropical Agriculture in Colombia.





MICHAEL PLOSZEK
Director of Athletics

Michael Ploszek, 37, begins his second year of leadership at Maine. Ploszek was appointed director of athletics on August 20, 1991.

An innovative and progressive administrator, Ploszek has quickly made an impact on the athletic department and the state of Maine.

In January, Ploszek instituted the A+ Attendance Program, which recognizes and encourages the academic achievement and dedication of Maine students in grades 7-12. Students who earn straight A's in a grading period, or who earn perfect attendance in that time receive two free tickets to Black Bear athletic events of their choices.

"The University of Maine athletic department is deeply committed to the success of our student-athletes and the educational aspirations of all students throughout the state," said Ploszek when making the announcement of the program. "I firmly believe in the positive role athletics can perform in shaping a student's academic ambition and encouraging the educational mission of any school."

Ploszek has also instituted the new "Team Maine" concept which is designed to create a strong relationship for Maine athletics throughout the entire state. As part of the concept, Ploszek and Walter Abbott visited every

high school athletic director in the state through conference meetings.

Ploszek noted, "The concept is simple and embodies our pledge to the people in this state. Whenever and wherever we can, we want to help."

The plan is designed to impact primarily the younger people in the state with a focus on aspirations. Team Maine Coaches' Nights with community groups, coaching clinics, athletic personnel appearances in schools and industry, alumni gatherings and a special logo will all be included in this effort.

Under Ploszek's direction, the athletic department moved forward through difficult budget challenges, and achieved a new high in annual athletic private donations.

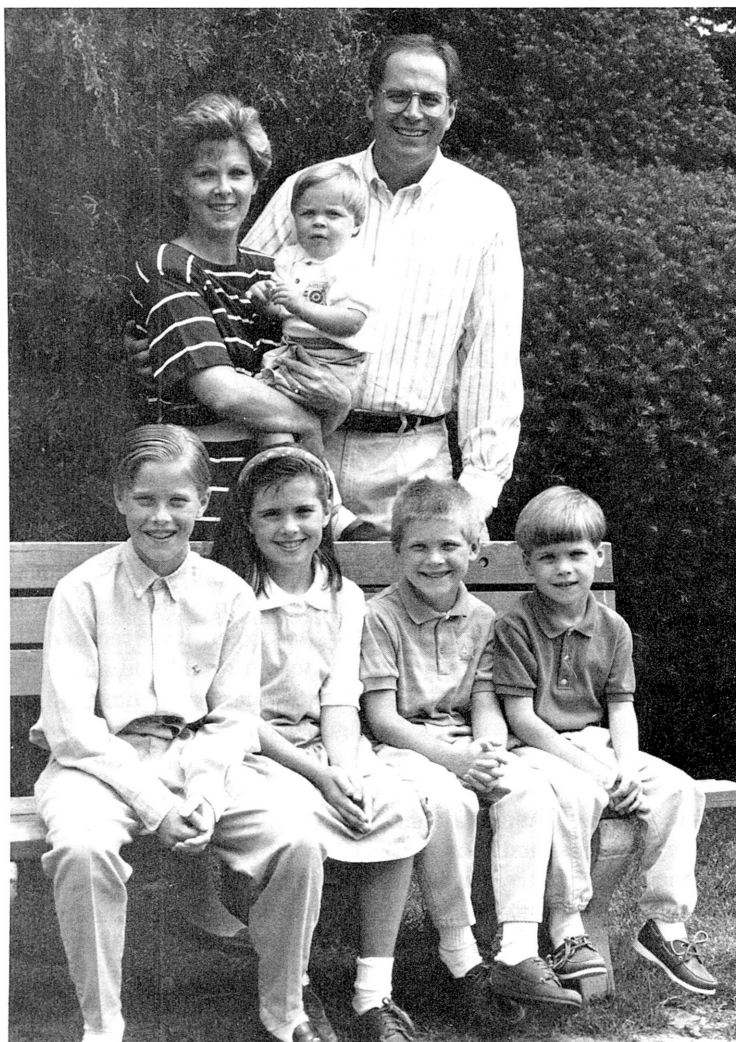
Before coming to Maine, Ploszek had worked as assistant athletic director for development at Rutgers University

in New Brunswick, N.J. since 1986. He was responsible for all fund-raising activities related to Rutgers' 30 intercollegiate sports. While at Rutgers, he achieved athletic fund-raising records amounting to over \$10 million.

A 1977 graduate of the University of Notre Dame with a bachelor's degree in business administration, Ploszek was a backup center for the Fighting Irish football team for two seasons.

Following graduation, he spent seven years working in sales, marketing and management for United States Steel Corporation. He then accepted a job as regional director of development for Notre Dame in the Chicago area, a position he held until his appointment at Rutgers in 1986.

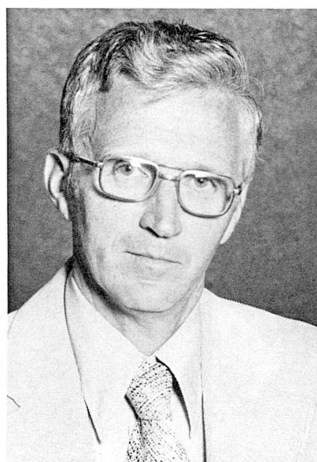
Ploszek and his wife, Karen, have five children, Mike, 11; Lauren, 9; Matt, 7; Pete, 5; and Luke, 1. The Ploszek family resides in Orono.



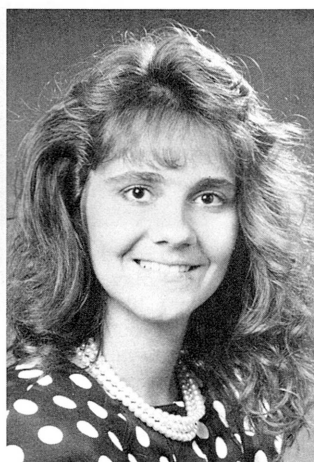
Senior Athletic Administration



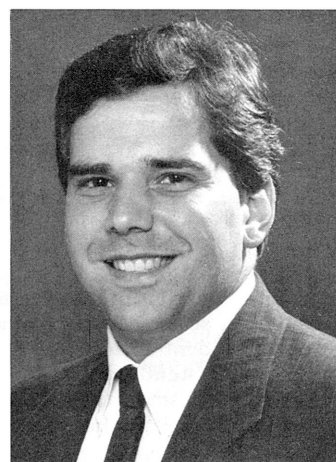
David Ames
Associate AD for
Intramurals and
Recreation



Linwood Carville
Associate AD for
Compliance



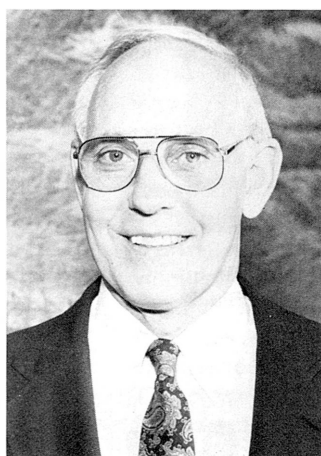
Anne McCoy
Assistant AD for Internal
Operations and Finance



Michael Palisi
Assistant AD for External
Affairs and Development



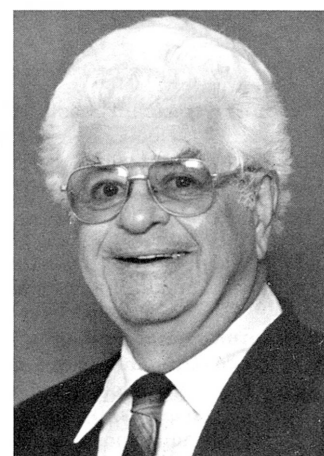
Margaret Zillioux
Associate AD for Academic
Support



Walter Abbott
Special Assistant to the
Athletic Director



George Jacobson
NCAA Faculty
Representative



Stan Pliskoff
Chair, Athletic Advisory
Committee



1991-92 Athletic Highlights at Maine

Basketball (Men)

- Rudy Keeling's team posts the third 17-win season in the 73-year history of the program. The campaign is one of the five winningest in UM history.

Basketball (Women)

- The women's basketball team posts its third consecutive 20-win season. Maine native Joanne Palombo, of Brunswick, becomes the fourth head coach in the program's history. Eight are named to the NAC Academic Honor Roll.

Field Hockey

- Terry Kix leads the Black Bears to a nine-win season in her rookie year. Seven student-athletes are named to the NAC Academic Honor Roll. Suzanne Plesman is the NAC's Top Scholar-Athlete in that sport.

Football

- Kirk Ferentz's squad boasts Paul Capriotti, a National Football Foundation and College Hall of Fame Scholar-Athlete. Carl Smith, who closes his storied career at Maine with over 4,000 yards rushing, competes in the Blue-Grey game.

Hockey

- Shawn Walsh's team reaches the NCAA Tournament for the sixth consecutive year. Scott Pellerin is the recipient of the Hobey Baker Memorial Award, given to college hockey's top player.

Soccer (Men)

- Jim Dyer's team boasts 11 NAC All-Academic selections including Academic All-American Gary Crompton.

Soccer (Women)

- Diane Boettcher completes her rookie season with five wins and five players named All-Academic.

Swimming and Diving

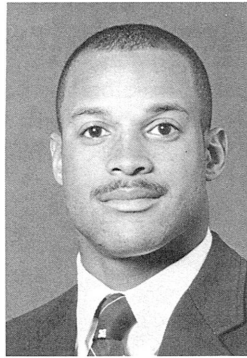
- Lance Graham receives his second New England Coach of the Year Award in three seasons. Rick Keene and Derek Marshall post victories in the NAC Championships.

Softball

- Janet Anderson's team qualifies for the first NAC Tournament as Deb Smith and Kim Reed are All-Conference selections. Eight are named to the NAC Academic Honor Roll.

Track

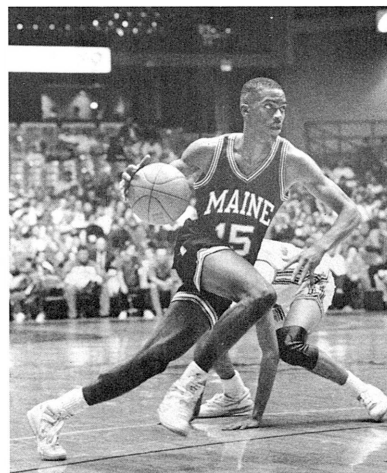
- The new Beckett Family Track and Field Complex is completed. Charla Harrie sets a pair of UM records and competes in the National Junior Championships. Mike Proctor earns the NAC title in the 400 meters.



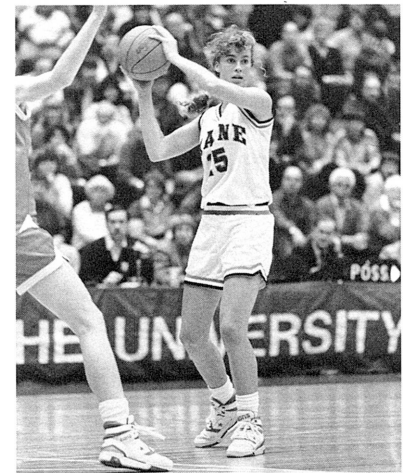
Carl Smith became the first player in the 100-year history of Black Bear football to eclipse 4,000 yards rushing in a career.



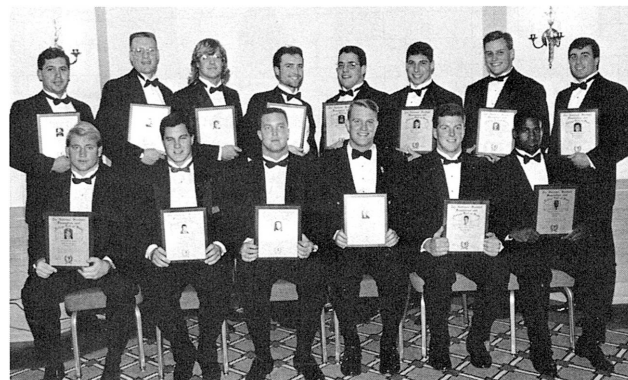
Scott Pellerin, shown with Harold Alfond (left) and Kyle Alfond (center) was recognized as the nation's top collegiate player when he received the Hobey Baker Memorial Award.



Derrick Hodge, who ranks 10th in career scoring at Maine, led the Black Bears to a 17-win season.

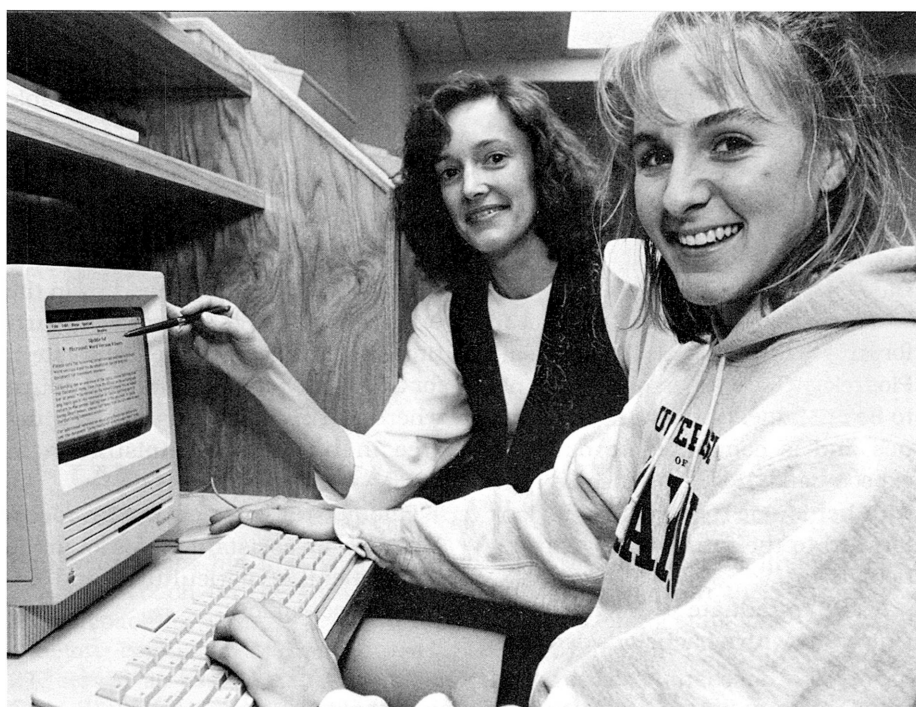


Tracey Frenette became just the sixth player in UM women's basketball history to score 1,000 points in a career.



Paul Capriotti (back row, far right) was one of three NCAA Division I-AA players to receive a National Football Foundation and College Hall of Fame Scholar-Athlete award.





Associate Athletic Director for Academics Margaret Zillioux (left) works with Black Bear point guard Chrissy Strong.

For the University of Maine, the 1991-92 season represented a year of tremendous athletic achievement. The ice hockey team competed in the NCAA tournament for the sixth straight season. The women's basketball team posted its third consecutive 20-win campaign. The men's basketball team claimed the third most wins in school history. Two student-athletes were named All-Americans. Scott Pellerin captured college hockey's top individual honor when he was selected as the recipient of the Hobey Baker Memorial Award. Carl Smith competed in the Blue-Grey game. But a closer look at the academic accomplishments of 1991-92 might indicate the most astounding achievements of Maine's student-athletes.

Forty-six student-athletes were named All-Academic by their respective conferences. University of Maine Scholar-Athlete Recognition Awards were given to a record 62 athletes who had maintained a 3.0 grade-point average last year. Paul Capriotti of the football team was one of three players from Division I-AA to receive a National Football Foundation and College Hall of Fame Scholar-Athlete award. Gary Crompton of the soccer team was named a regional Academic All-American.

Although much of the credit must be given to the student-athletes who dedicated themselves not only to rigorous

athletic conditioning, but also to a dedicated academic schedule, much of the praise can also be directed to Margaret Zillioux.

As Associate Athletic Director for Academic Support, Zillioux is responsible for the nearly 600 student-athletes at the Orono campus. She makes students aware of existing support services on campus, like the career center or the tutoring department. She teaches time management skills, and directs the mandatory study halls.

"I think it's very important that our student-athletes come to Maine to develop as people," says Zillioux. "They need to mature as complete people. Athletics are just one part of the college experience. Academics are another. There are countless experiences. My job is to make sure the academic experience is fruitful."

Zillioux wears many different hats, serving as a liaison between athletes, coaches, faculty and administrators. Each student-athlete is treated as an individual. No two situations are ever the same.

"To work face-to-face, first-hand with each student is very important," says Zillioux. "If all our contact is in the form of memos and phone calls, we're not accomplishing what we set out to do. Each case is different. Some need very little guidance, or just some reinforcement. Others may need a tutor, or the

opportunity to discuss class with the professor. Some just need a push to get to class on time. They need someone to trust."

One way to establish that trust is to attend sporting events. While working toward her master's degree at Iowa and serving as an academic counselor for the Hawkeyes, Zillioux would enter Dan Gable's wrestling practice room, an area foreign to virtually all non-wrestlers. At Maine, Zillioux can be seen near the 50-yard line of Alumni Field, at midcourt or center ice at Alford Arena.

"If we're going to accomplish anything on the academic side, it's important that the student not always see me across the desk," says Zillioux.

Since Zillioux's arrival on campus five years ago, the grade point average of student-athletes at Maine has risen to a level where it is higher than that of the general student-body. The graduation rate of Maine athletes is 9.1 percent higher than that of the national average.

"I like to think of my job as a dose of preventive medicine," says Zillioux. "We solve the academic problems before they arise. We have to teach our student-athletes to not only develop as athletes, but also to play the academic game."

With grade-point averages rising, and academic casualties at a minimum, one might expect Zillioux's outstanding program to remain unchanged. But like the general study skill program and the Student-Athlete Newsletter which were developed last season, Zillioux is implementing still more programs this season designed to increase academic awareness.

"The coaches at Maine have been very receptive to my ideas and goals," says Zillioux. "Without their input, Academic Support would never work. Although we have attained many goals in the past two years, we still need to strive beyond. We need to continue to build the academic success which has put Maine near the top in the Northeast."

With the continued support of a coaching staff dedicated to academics, and the determined guidance of Margaret Zillioux, the University of Maine is confident it will continue the success experienced not only in athletic competitions, but also in the 'academic game.'



The Black Bear Coaching Staff



JOANNE PALOMBO
Head Coach

Joanne Palombo, 27, was named head women's basketball coach at the University of Maine on June 18 by Michael Ploszek, Director of Athletics. Palombo, who is the fourth head coach in the program's 17-year history, succeeds Trish Roberts, who resigned earlier this year to accept the head coaching position at the University of Michigan.

A native of Brunswick, and the state of Maine's first *Parade Magazine* girl's basketball All-American in 1983, Palombo returns to her home state with high hopes for the future of Black Bear women's basketball.

"The position alone is a tremendous opportunity to establish a long-term commitment to create tradition at a school which has earned national respect," said Palombo. "The fact that I'm returning to my home state is icing on the cake."

Palombo comes to Maine after serving as an assistant coach at Auburn University since 1988. While at Auburn, the Lady Tigers participated in three of the last five NCAA Final Four tournaments, including a pair of appearances in the national championship game during her tenure. While at Auburn, Palombo had the opportunity to work with two Olympians in Vickie Orr and Carolyn Jones. In addition, the Lady Tigers established the longest home winning streak in NCAA history at 69 games.

Palombo served as the team's primary recruiter, signing the fourth-ranked recruiting class in 1990-91. She followed that with a 16th ranked recruiting class of six student-athletes in 1991-92.

She also served as the director of the nationally-respected Lady Tiger Basketball Camp.

"We believe Joanne is a perfect fit for the University of Maine," said Ploszek. "She's a person who wants to be at Maine, understands our values and is committed to our high expectations. Her experience, coupled with her Maine roots, makes us look forward to the future with great anticipation."

A 1987 graduate of Northwestern University with a bachelor's degree in

political science, Palombo was a four-year letter winner for the Wildcats. She was an All-Big Ten Honorable Mention selection and a first team All-Academic choice her senior season. In 1987, she was instrumental in leading the Wildcats to the second round of the NCAA Tournament.

Upon graduation, she worked in the private sector and served as a part-time assistant coach at Northwestern for a season, before moving to Auburn where she received her master's degree in business administration in 1990.

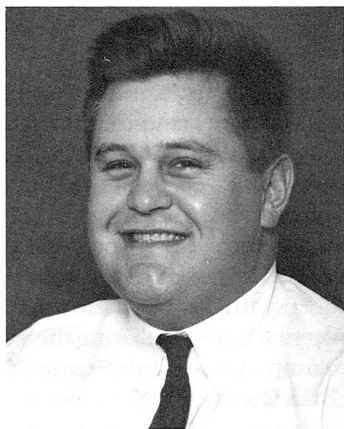
Palombo is married to Dr. John McCallie, an assistant professor in the department of agricultural and resource economics.



Head Coach Joanne Palombo and her husband, Dr. John McCallie.



The Black Bear Coaching Staff



LAMAR BOUTWELL
Assistant Coach

Boutwell enters his first year as an assistant coach on the University of Maine coaching staff.

Before coming to Maine, Boutwell, 27, served as assistant coach at The Ohio State University. He served as director of the Buckeye Classic Tournament and was involved in all aspects of team travel and on-campus recruiting visits. Before his appointment at OSU, Boutwell handled similar responsibilities including film exchange and academics at Long Beach State.

"Lamar has a tremendous amount of experience at many successful programs," said Palombo. "We share similar philosophies in basketball. He brings to Maine the experience of success along with his enthusiasm and undeniable work ethic. Lamar has an excellent personality and will do very well in recruiting."

Boutwell has been involved in USA Basketball on various levels since 1988. This year, he was a member of the Women's Olympic Basketball Trials administrative staff. In 1991, he was a member of the U.S. Olympic Festival Basketball administrative staff and was also the USA Basketball liaison to the U.S. Junior National team which toured Mexico.

In 1990, he received his bachelor's degree in general studies from Louisiana State University. From 1984-1989, he worked as a student assistant and manager with the women's basketball program in Baton Rouge, La.

Boutwell will coordinate the Black Bears recruiting efforts as well as work directly with promotions, scheduling and assisting with the Black Bear summer camps. On the court, Boutwell will work with the guards.



KAY ABRAHAMSON
Assistant Coach

Abrahamson enters her first year as an assistant coach on the University of Maine coaching staff.

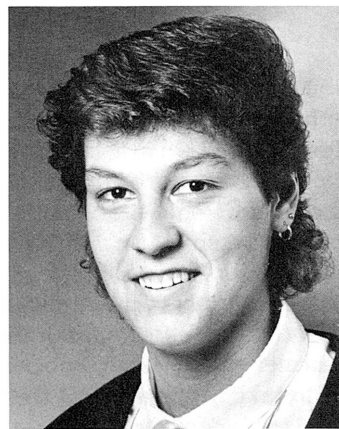
Abrahamson, 25, most recently served as assistant coach at Duquesne University of the Atlantic-10 Conference in Pittsburgh, Pa. Her duties there included recruiting, floor coaching, pre-season workouts and meal planning. She also worked as a fitness and strength trainer at the YMCA in Pittsburgh. There, she oversaw the facilities and the personalized training of the clientele.

"Kay is a talented young coach with vast playing experience at the highest level," said Palombo. She has a considerable amount of knowledge to offer our program and understands the demands on the student-athletes. In this way, she will be an excellent role-model and recruiter for Maine."

From May to September of 1991, she was an assistant coach/player in the professional women's basketball league in Dunedin, New Zealand. While in New Zealand she directed a boys' and girls' camp and coached a high school girls' team.

Abrahamson played collegiate basketball at both the University of Georgia and University of Iowa. As a freshman at Georgia, she started for the Bulldog team that went to the NCAA Final Four. She earned her bachelor's degree in physical education/sports administration from Iowa in 1990. In 1991, she received her master's in education from Duquesne.

Abrahamson's duties at Maine will include on-court coaching and recruiting of post players, scouting opponents, team travel, weight training and assisting with the summer camps.



RACHEL BOUCHARD
Part-Time Assistant

Bouchard returns to her alma mater as a part-time assistant coach, after a year playing professionally in France.

Bouchard, 23, played four years at the University of Maine and ended her career with 16 school records as well as several New England records. Among her accolades are all-time scoring leader at UM and New England Division I with 2,409 career points.

Bouchard was twice named District I All-America and was awarded GTE/CoSIDA Academic All-American honors her senior year.

"It is great to have a person with Rachel's character, experience and success as a member of the staff," said Head Coach Joanne Palombo. "With her academic and athletic achievements, Rachel epitomizes the idea of the student-athlete and she represents so much about what being a Maine person is all about. She is truly a perfect role model for the players."

In the North Atlantic Conference, Bouchard was named Player of the Year both her junior and senior seasons and was named to the All-Conference teams for three consecutive years.

A 1991 graduate of the University of Maine, Bouchard received her bachelor's degree in psychology/public relations.

Bouchard coaches and has also been the guest speaker at various summer clinics in the state for the past several years.

Bouchard's duties at Maine will include on-campus recruiting, film-exchange and on-court coaching of the post-players. She will have the opportunity to be involved in as many aspects of the program as possible.



1992-93 Outlook

The University of Maine women's basketball team will have a different look for the 1992-93 season. Not only have four of last year's top producers graduated, but the changing of the guard has taken place in the head coach's position as well.

Joanne Palombo was named head coach of the Black Bears on June 18, after former coach Trish Roberts resigned to take the position at the University of Michigan. Despite her youth, Palombo brings with her a wealth of knowledge and experience. At 27, Palombo has seen the big time of college basketball and brings with her a winning tradition.

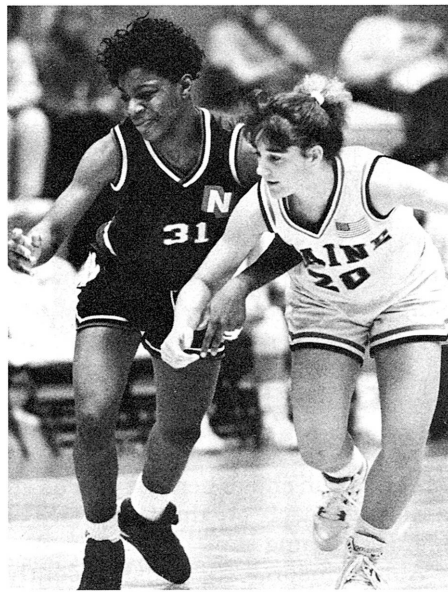
While serving as an assistant coach at Auburn University in Alabama, the Lady Tigers participated in three of the last five NCAA Final Four tournaments, including a pair of championship games during her tenure. In addition, the Lady Tigers established the longest home winning streak in NCAA history at 69 games.

Palombo cites Maine as a program "which has earned national respect," and is hoping to bring the program to another level, creating a long-term tradition of excellence.

She also brings a great talent for recruiting with her. While at Auburn, Palombo served as the team's primary recruiter. She was successful in signing the fourth-ranked recruiting class in the nation in 1990-91. She followed that with a class of six highly-ranked student-athletes in 1991-92.

"The plan is to look very closely at the state of Maine and the whole Northeast, develop a very strong presence there, and build on that," said Palombo. "Maine players have many very positive, distinctive qualities that are excellent for a team foundation. You have to have tradition working for you to pull people from other regions. It will take a little time, but it will happen."

The Black Bears will have to replace four seniors who each received honors during their collegiate careers at UMaine. Last season, Tracey Frenette (13.4 ppg, 5.7 rpg, 30 blocks), Jess Carpenter (13.3 ppg, 7.1 rpg, 23 blocks), Julie Bradstreet (10.5 ppg, 5.0 rpg, 4.1



Senior co-captain Heather Briggs returns as the team's third leading scorer of a year ago.

apg, 3.7 spg) and Carrie Goodhue (7.7 ppg, 3.1 rpg, 3.1 apg) combined to provide at least 50 percent of the team's production in several different categories.

The seniors combined for 50% of the team's rebounds, 65% of the scoring, 67% of the assists, 80% of the blocked shots, 69% of the steals and 62% of the total minutes played. A lot of hard work will have to be done by the 1992-93 Black Bears to fill in the imposing holes in the stats.

Palombo will face the challenge of preparing the returning players and the newcomers for filling those shoes. Lone senior **Heather Briggs** and junior **Cyndi Buetow** are the only returning players who saw over 300 minutes of playing time last season. Briggs ended her season averaging 13.2 points and 8.0 rebounds per game. Her rebounding placed her fifth in the NAC in that category. Buetow averaged 3.8 points and 2.5 rebounds per contest and will have to produce more this season at the center position for the Black Bears to remain competitive.

Junior point guard **Chrissy Strong** should come back and start, but missed most of last season with a knee injury. She did return for the last seven contests of the season averaging 15.7

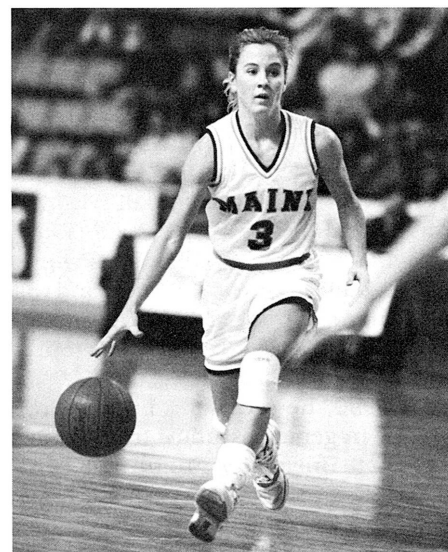
minutes of playing time over that span. Strong was named to the North Atlantic Conference All-Rookie team in 1990-91 and should return to that high level of play this year.

Inexperience is the word to describe the rest of the returning players. Each has been with the team for a year, but saw very little action during their freshman campaign. Guards **Seana Dionne** and **Erin Grealy** saw the most action of all freshmen at 16.4 and 9.6 minutes per game respectively, in their 18 contests played. Each contributed 3.1 ppg.

The Frontcourt:

North Atlantic Conference all-second team selection Heather Briggs heads the list of returnees at the small forward position. Briggs led the team in rebounding with 8.0 boards per contest in 1991-92. She also placed third on the team in scoring with 13.2 ppg. As a senior, Palombo expects Briggs to be a leader for the team.

Buetow, a 6-2 center, is the leading candidate to fill in the middle, replacing All-Conference selection Jess Carpenter. Buetow does not have a great deal of experience, averaging just under 16 minutes of play over her 29 games, but has shown steady improvement.



Junior tri-captain Chrissy Strong will return as the team's floor general after sitting out much of the 1991-92 season with a knee injury.



1992-93 Outlook

Six-foot sophomore **Rita Sullivan** played in 13 games last year and started one, against Dartmouth. A player with natural athletic ability and outstanding post moves, Sullivan had a very strong showing in the pre-season.

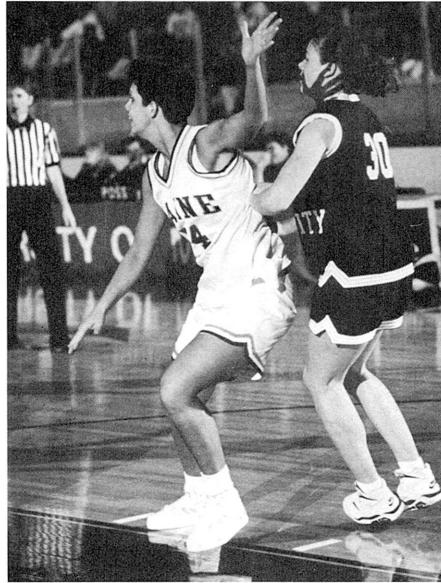
A 5-10 guard/forward from Hamilton, Va., **Sara Philbrick** is a physical player who could come on strong in the small forward spot. Prior to her limited experience last year, Philbrick averaged 21 points and 10 rebounds at Loudoun Valley High School.

Sophomores **Katrina Krom** and **Trixie Wolf** each played less than 30 minutes and view the coming year as their first year of play. Krom is a 6-3 center who averaged 15.6 points and 12 rebounds per game while at West Haven (Conn.) High School. Wolf is a 6-2 center and averaged 15 points and 17.3 rebounds per contest at Jefferson (Ohio) High School.

The incoming freshman class includes three frontcourt players. **Catherine Gallant (Pincourt, Quebec)**, a 5-11 forward, hails from Tracey Frenette territory. Gallant graduated from John Abbott College in 1992, the same school that Frenette played for before choosing Maine for her degree. Gallant averaged 16 points per game, ending her three-year career with 1,220 points. She also averaged 13 boards per contest and is John Abbott's all-time leading rebounder with 1,003.

Six-footer **Stephanie Guidi (Stormville, N.Y.)** averaged 15.6 points and 13.9 rebounds per game in the 1991-92 season. She ended her career at Carmel High School with 1,125 points. Guidi has been described as a very physical post player who can run the floor on the fast break.

Six-foot-one **Becky Marsden (Bennington, Vt.)** scored 16.5 points and grabbed 13.5 rebounds per game at Mt. Anthony Union High School. She was named the team's Most Valuable Player for two straight years and was named a Twin-State team selection. She has been described as a strong post player who is fundamentally sound and can use both hands.



Junior tri-captain Cyndi Buetow should provide solid play at the center position.

Backcourt:

Five-foot-seven junior, **Chrissy Strong** was an All-Rookie pick in 1990-91, but a knee injury forced her to sit and watch much of her sophomore season. Strong injured the knee in the second game of the season and missed ten contests before returning on Jan. 9 versus Hartford. Two days later, against Vermont, Strong re-injured the joint and was absent for seven more games. On Feb. 13, at Northeastern, Strong bounced back into action. She played in the remaining seven games while wearing a knee brace. Strong is expected to come back full-force and become the floor leader once again.

Sophomore **Seana Dionne** led all freshmen with 296 minutes of playing time last season, while starting seven games. Dionne is another natural point guard, but could contribute at the off-guard as well. Dionne added 3.1 points per game and 20 assists in her 18 contests.

Five-foot-nine guard **Erin Grealy** was awarded the team's Sixth Player award at the spring awards banquet. Grealy played in 18 contests and contributed 3.1 points per game, while showing great athletic ability during the 1991-92 season. Grealy could be a contender for the starting position at off-

guard if her intensity and level of play continues.

Katti Towle (Gorham) returns to the Black Bear team after a year off. Towle played in three games her freshman year at Maine before going through surgery on her ankle. Towle is a former All-State player from Gorham High and the MVP of the Western Maine Tournament.

This year's recruiting class offers just one guard. **Stacia Rustad (Kenai, Alaska)**, 5-7, was the first female at Kenai Central High School to score over 1,000 points. She averaged 22.9 points, seven rebounds and five assists her senior year. She was an All-State selection and the USA Today Player of the Year in Alaska for 1992.

The schedule is yet another obstacle that Palombo and her team will have to overcome. While Maine faces many familiar foes, the Black Bears also meet six first-time opponents this year. Highlighting the schedule is the first ever meeting versus Boston College, in the season opener.

The Black Bears face 1992 NCAA tournament participant and NAC Champion Vermont twice en route to the conference tournament. Maine also takes on Rhode Island in Portland, Me. The Black Bears travel to Piscataway, N.J., and Mt. Pleasant, Mich. over the holiday break. While in N.J., Maine will play in the Bell Atlantic Holiday Tournament with national powerhouse teams Rutgers, Texas and Clemson. While in Michigan, the Bears will play in the Comfort Inn Chippewa Classic with Central Michigan, Valparaiso and Siena.

The conference schedule ends with Maine on the road for three games before entering the tournament.

The goal for every conference team is to win the North Atlantic Conference Championship in hopes of sending a team to follow Vermont's lead (the NAC's first-ever NCAA women's basketball tournament participant) into the field of 48.



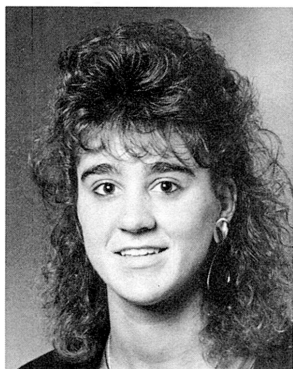
Meet The Maine Women

1992-93 Black

Heather Briggs	13
Cyndi Buetow	14
Chrissy Strong	15
Seana Dionne	16
Erin Grealy	16
Katrina Krom	17
Sara Philbrick	17
Rita Sullivan	18
Katti Towle	18
Trixie Wolf	18

The Newcomers

Catherine Grasse	20
Stephanie Grasse	20
Becky Marsden	21
Stacia Reed	21



20 Heather Briggs

**Senior
Tri-Captain
5-10 Forward
Biddeford, Me.**

Maine: Heather is just 192 points short of the 1,000 career-point mark... can play in either the guard or small forward positions... can rebound and shoot the three-pointer.

Junior: The team's third leading scorer, averaging 13.2 points per contest... the team's leading rebounder with eight boards per game... finished the season 12th in the conference in scoring and fifth in rebounding... named to the North Atlantic Conference second team for her contributions.

Sophomore: Played in 26 games and started nine... averaged 9.3 ppg, placing her fifth on the team in scoring... was also third on the team in three-pointers (18) and fourth in rebounds (4.7 per game)... dished out a career-high nine assists against Colgate.

Freshman: Played in all 30 games while starting 13... averaged 6.1 ppg and 4.3 rpg... named to the NAC All-Rookie team.

High School: Played for coach Bill Harriman at Biddeford High School... was named first team All-State and All-Conference her junior and senior years... selected Gatorade Player of the Year... in her senior year, she averaged 22 points and 14 rebounds per game... totalled 1,535 points and 980 rebounds in her career... played in the 1989 East-West All-Star game.

Personal: Also played field hockey and softball in high school... a psychology major... is interested in coaching and working with children... born July 1, 1971 ... the daughter of David and Patricia Briggs.

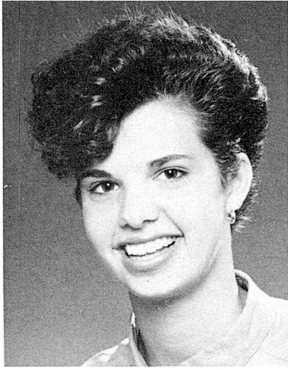


CAREER HIGHS

Points 26 vs. Cleveland State, 1991-92
Rebounds 16 vs. Fairfield, 1991-92
Assists 9 vs. Colgate, 1990-91

<u>YEAR</u>	<u>G/GS</u>	<u>FG</u>	<u>FGA</u>	<u>FG%</u>	<u>FT</u>	<u>FTA</u>	<u>FT%</u>	<u>REB</u>	<u>A</u>	<u>TO</u>	<u>BL</u>	<u>ST</u>	<u>PTS</u>	<u>PPG</u>	<u>MIN</u>
91-92	29/27	152	344	.442	70	93	.753	233	56	68	5	45	383	13.2	840
90-91	26/9	89	219	.406	45	74	.608	121	50	47	4	24	241	9.3	585
89-90	30/13	72	181	.398	39	51	.765	128	43	49	6	24	184	6.1	617
TOTALS	85/49	313	744	.421	154	218	.706	482	149	164	15	93	808	9.5	2042





54 Cyndi Buetow

**Junior
Tri-Captain
6-2 Center
Cologne, Minn.**

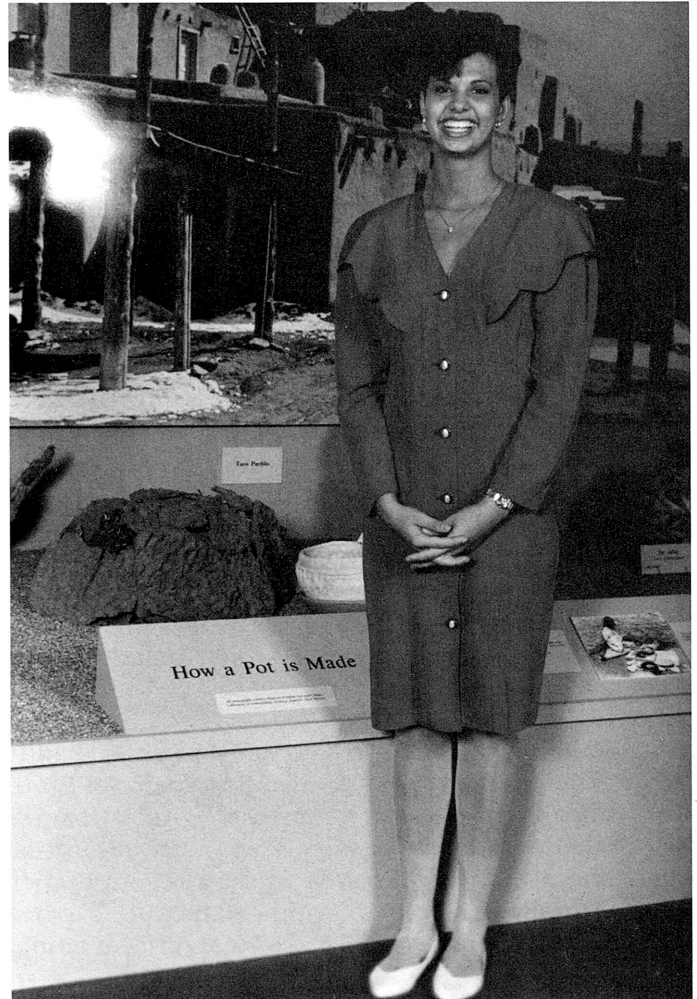
Maine: A versatile center... the leading candidate for the starting center job.

Sophomore: Played in all 29 games last year while starting seven... contributed 3.8 points and 2.5 rebounds per contest... played the most minutes of any non-starter... scored a career high 14 points against Holy Cross... also grabbed a career-high eight rebounds in the first Drexel game.

Freshman: Played in all but two games in the 1990-91 season... started four contests... averaged 2.0 points and 1.7 rebounds per contest... had a career-high five steals against Drake.

High School: Played for coach Mark Puditzke at Waconia High School... named Best Defensive Player her sophomore year... a two year Wright County Conference All-Conference selection... named the Most Valuable Player in the conference her senior year... Waconia High School's all-time leading rebounder with 719... also posted career totals of 1,036 points, 303 assists and 239 steals.

Personal: Captained the volleyball and softball teams in high school... named All-State as a pitcher for the softball team... a speech communication/public relations major, enrolled in the College of Sciences... born December 22, 1971... the daughter of Ralph and Carol Buetow.

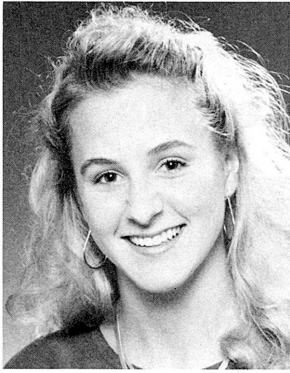


CAREER HIGHS

Points 14 vs. Holy Cross, 1991-92
Rebounds 8 vs. Drexel 1, 1991-92
Steals 5 vs Drake, 1990-91

<u>YEAR</u>	<u>G/GS</u>	<u>FG</u>	<u>FGA</u>	<u>FG%</u>	<u>FT</u>	<u>FTA</u>	<u>FT%</u>	<u>REB</u>	<u>A</u>	<u>TO</u>	<u>BL</u>	<u>ST</u>	<u>PTS</u>	<u>PPG</u>	<u>MIN</u>
91-92	29/7	50	120	.417	11	30	.367	73	18	49	5	12	111	3.8	430
90-91	26/4	22	62	.355	8	14	.571	45	3	21	5	13	52	2.0	251
TOTALS	55/11	72	182	.396	19	44	.432	118	21	70	10	25	163	3.0	681





3 Chrissy Strong

Junior
Tri-Captain
5-7 Guard
Thomaston, Me.

Maine: A natural point guard with the ability to dribble, penetrate, and shoot the jumper.

Sophomore: Injured during the second game of the season... sat out 18 games... returned to play in the last seven contests of the season... averaged 2.1 points in her 11 contests.

Freshman: Played in all 28 games and started 23... scored a season/career high 15 points in the first game against Vermont... the team's leading rebounder against Boston University, with 11... fell just one assist shy of the record with 13 assists vs. Siena College.

High School: Captained coach Dwight Henry's Georges Valley team to the conference championship and Western Maine Class C runner-up position... averaged 22.5 points, 7.4 rebounds, 5.8 assists and 6.0 steals per her senior year... 1990 Miss Maine Basketball... team's MVP three seasons... first female to score over 1,000 career points at Georges Valley... named a McDonald's East/West Academic All-Star... a two-year *Bangor Daily News* all-state selection... The *Maine Sunday Telegram's* Female Basketball Player and Female Athlete of the Year in 1990... a Converse All-America and Street & Smith All-America Honorable Mention selection.

Personal: Started on the boys varsity soccer team... a state champion in the 100- and 300-meter hurdles... placed seventh in the nation in the 400 meter hurdles at the 1987 TAC Junior Olympics... brother Bob is a starter on the men's soccer team at UMaine... an English major... born December 24, 1971... the daughter of Robert Jr. and Vicky Strong.



CAREER HIGHS	
Points	15 vs. Vermont, 1990-91
Rebounds	11 vs. Boston U, 1990-91
Assists	13 vs. Siena, 1990-91

YEAR	G/GS	FG	FGA	FG%	FT	FTA	FT%	REB	A	TO	BL	ST	PTS	PPG	MIN
91-92	11/1	9	29	.310	4	10	.400	19	20	35	1	17	23	2.1	208
90-91	28/23	64	169	.379	31	40	.775	98	104	77	2	33	164	5.9	777
TOTALS	39/24	73	198	.369	35	50	.700	117	124	112	3	50	187	4.8	985





33 Seana Dionne

Sophomore Guard 5-7 Millinocket, Me.

Maine: A strong, physical guard with speed and quickness... has great ball handling skills and can shoot the three pointer... is in the running for the starting off-guard slot.

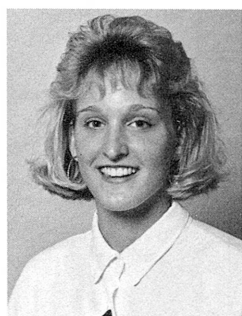
Freshman: Played in 18 games... added 3.1 points per game before breaking a bone in her hand during a practice... the injury forced her to miss the last seven games of the season.

High School: Played for coach Gerald Burleigh at Stearns High School... captained her junior and senior seasons... contributed 17.5 points, five assists, and seven rebounds per game at Stearns... *Bangor Daily News* All-Tourney Team--Class A... *Bangor Daily News* all-state (first team)... *Maine Sunday Telegram* Class of the State team... *Maine Sunday Telegram* Class A team... Big East Conference All-Star Team... *U.S.A. Today* Honorable Mention Player of the Year... Maine Gatorade Circle of Champions Player of the Year.

Personal: Also played field hockey and softball ...an accounting major enrolled in the College of Business... born Sept. 17, 1973... the daughter of Thomas and Carol Dionne.



YEAR	G/GS	FG	FGA	FG%	FT	FTA	FT%	REB	A	TO	BL	ST	PTS	PPG	MIN
91-92	18/7	20	58	.345	15	24	.625	32	20	22	4	7	296	3.1	430



10 Erin Grealy

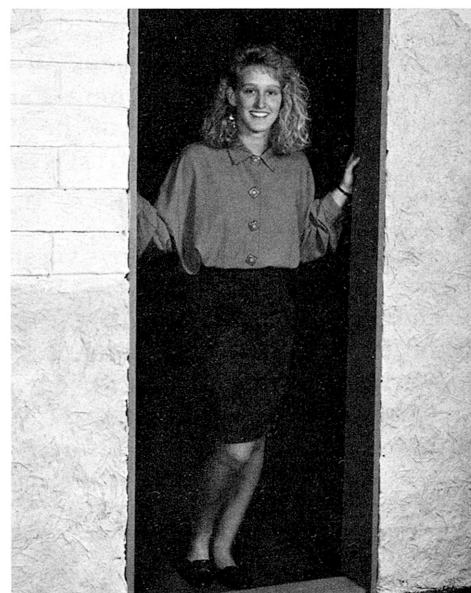
Sophomore Guard 5-9 Medford, Mass.

Maine: A hard working athlete... can handle the ball, penetrate, and shoot the jumper... in the running for the starting off-guard position.

Freshman: Played in 18 games... averaged 3.1 points per contest... was given the team's Sixth Player Award by the coaching staff.

High School: Played for coach Brian Harris at Arlington Catholic High School... was a captain her junior and senior seasons... averaged 24 points, 10 rebounds, six assists, and four steals per contest... was named Medford High's Player of the Year... the first female at Medford to score over 1,000 points... broke the school record with 1,368 career points... the scoring leader in Eastern Massachusetts... named Catholic Central League All-Star for four years in a row... Was the league's MVP... named to the *Boston Herald* Dream Team... named one of the top 40 players in Massachusetts... a member of the AAU/Junior Olympic Team.

Personal: Also played volleyball and softball...A zoology major enrolled in the College of Sciences... born June 1, 1973... the daughter of Thomas and Ann Grealy.



YEAR	G/GS	FG	FGA	FG%	FT	FTA	FT%	REB	A	TO	BL	ST	PTS	PPG	MIN
91-92	18/0	19	64	.297	18	26	.692	25	16	22	1	6	56	3.1	172





50 Katrina Krom

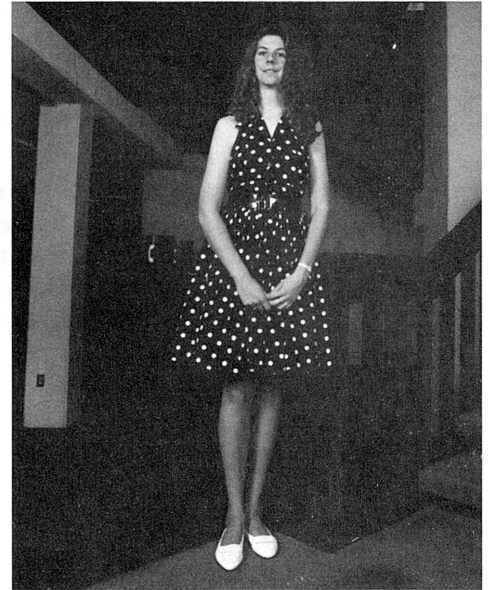
Sophomore Center 6-3 West Haven, Conn.

Maine: Possesses the size and mobility needed at center... has the ability to run the floor.

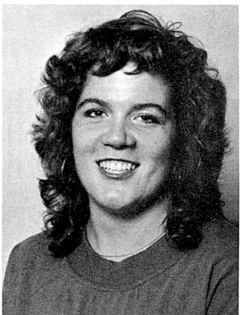
Freshman: Played in only three contests... sat out the last seven games due to a stress fracture in her lower leg.

High School: Averaged 15.6 points, 12 rebounds, and three blocked shots per contest at West Haven High School... named to the Pre-Season Sweet 16 All-State Team... All-District West Team of Connecticut... a member of the Connecticut EAST-WEST All-Star Team... a member of the Connecticut National AAU Team... given the Outstanding Rebounder Award her senior year.

Personal: Also played volleyball...an elementary education major... born Feb. 15, 1973... the daughter of Kenneth and Alicia Krom.



<u>YEAR</u>	<u>G/GS</u>	<u>FG</u>	<u>FGA</u>	<u>FG%</u>	<u>FT</u>	<u>FTA</u>	<u>FT%</u>	<u>REB</u>	<u>A</u>	<u>TO</u>	<u>BL</u>	<u>ST</u>	<u>PTS</u>	<u>PPG</u>	<u>MIN</u>
91-92	3/0	0	2	.000	0	0	.000	4	1	0	0	0	0	0.0	14



32 Sara Philbrick

Sophomore Guard 5-10 Hamilton, Va.

Maine: Strong perimeter player... solid ball handler with a good jump shot.

Freshman: Played in 17 games... averaged 1.1 points and 1.2 rebounds per contest... given the Coach's Award at the end of the season banquet.

High School: A captain for coach Carmel Kielty's Loudoun Valley High School Team... averaged 21 points, 10 rebounds, three assists and three steals per game... was named Outstanding Female Athlete of the Year... named Loudoun County Female Athlete of the Year by the *Loudoun Times Mirror*... was named High Scorer All-District... East-West Senior All-State All-Star Team... First Team All-Region... First Team All-District.

Personal: Also captained the volleyball and track teams at Loudoun Valley... an undecided major... born July 12, 1973... the daughter of John and Paula Philbrick.



<u>YEAR</u>	<u>G/GS</u>	<u>FG</u>	<u>FGA</u>	<u>FG%</u>	<u>FT</u>	<u>FTA</u>	<u>FT%</u>	<u>REB</u>	<u>A</u>	<u>TO</u>	<u>BL</u>	<u>ST</u>	<u>PTS</u>	<u>PPG</u>	<u>MIN</u>
91-92	17/0	8	26	.308	3	12	.250	21	2	17	0	0	19	1.1	127





42 Rita Sullivan

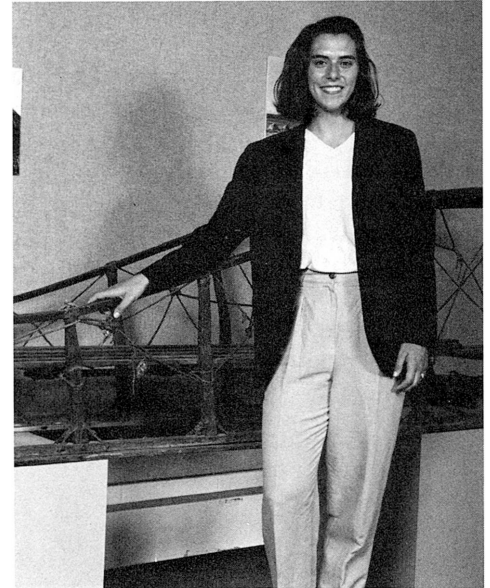
Sophomore Guard 6-0 Bangor, Me.

Maine: Strong power player... will be looked to for physical play in the paint.

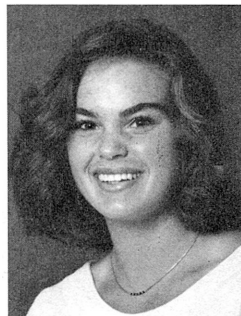
Freshman: Played in 13 contests... averaged 1.0 points and 0.9 rebounds per game... averaged 7.1 minutes per game.

High School: Contributed 18.5 points and grabbed 10.5 rebounds per game... added 3.2 steals per contest as well... *Bangor Daily News* All-State (first team)... *Maine Sunday Telegram* Class of the State Team... McDonald's East-West All-Star... McDonald's Academic All-State (4.0 GPA)... *U.S.A. Today* Maine Player of the Year Honorable Mention... Big East All-Conference Player... Big East Player of the Year... named Miss Maine Basketball in 1991.

Personal: Captained the Bangor High field hockey team in 1991... named field hockey All-State in 1991... a journalism major enrolled in the College of Arts and Sciences... born Dec. 19, 1972... the daughter of Dan and Marguerita Sullivan.



<u>YEAR</u>	<u>G/GS</u>	<u>FG</u>	<u>FGA</u>	<u>FG%</u>	<u>FT</u>	<u>FTA</u>	<u>FT%</u>	<u>REB</u>	<u>A</u>	<u>TO</u>	<u>BL</u>	<u>ST</u>	<u>PTS</u>	<u>PPG</u>	<u>MIN</u>
91-92	13/1	3	16	.188	7	10	.700	12	2	12	1	5	13	1.0	92



5 Katti Towle

Sophomore Guard 5-4 Gorham, Me.

Maine: Has shown steady improvement though the summer and pre-season... has a good shot from three-point range.

Freshman: Played three games in 1990-91... sat out the end of the season after having surgery on her ankle... averaged 1.5 points per game.

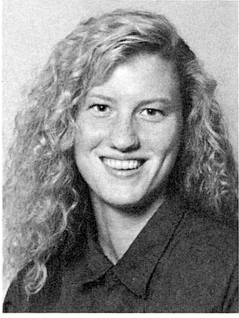
High School: Graduated from Gorham High School in 1990... a former Class B All-state selection... captained coach Patrick O'Shea's Gorham Rams to the 1989 Western Maine championship and 1990 state championship... also named a *Bangor Daily News* All-State honoree... averaged 15 points, 5.0 assists, and 3.5 steals per game her senior year... named co-MVP for Gorham... named MVP of the Western Maine Tournament... included in Who's Who in American High School Sports.

Personal: Also an All-Conference soccer player... a biochemistry major... born July 8, 1972... the daughter of Ralph and Cynthia Towle.



<u>YEAR</u>	<u>G/GS</u>	<u>FG</u>	<u>FGA</u>	<u>FG%</u>	<u>FT</u>	<u>FTA</u>	<u>FT%</u>	<u>REB</u>	<u>A</u>	<u>TO</u>	<u>BL</u>	<u>ST</u>	<u>PTS</u>	<u>PPG</u>	<u>MIN</u>
90-91	3/0	0	1	.000	3	4	.750	1	0	2	0	1	3	1.0	15





55 Trixie Wolf

Sophomore Center 6-2 Jefferson, Ohio

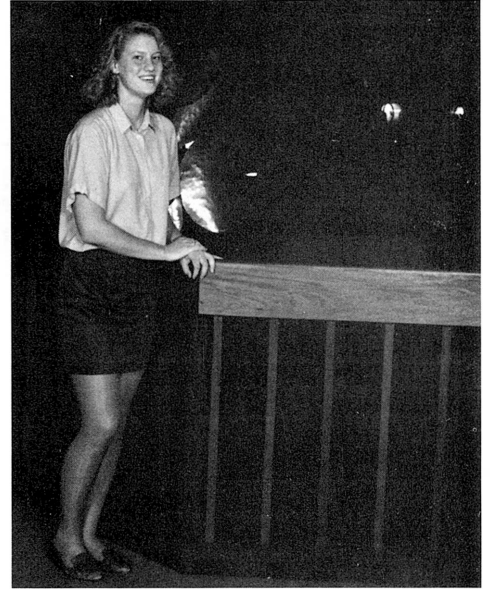
Maine: A center who will provide depth in the middle... fits in well with Maine's running game... has the ability to run the floor.

Freshman: Played in seven contests last season... averaged 0.9 points and 0.9 rebounds

per game.

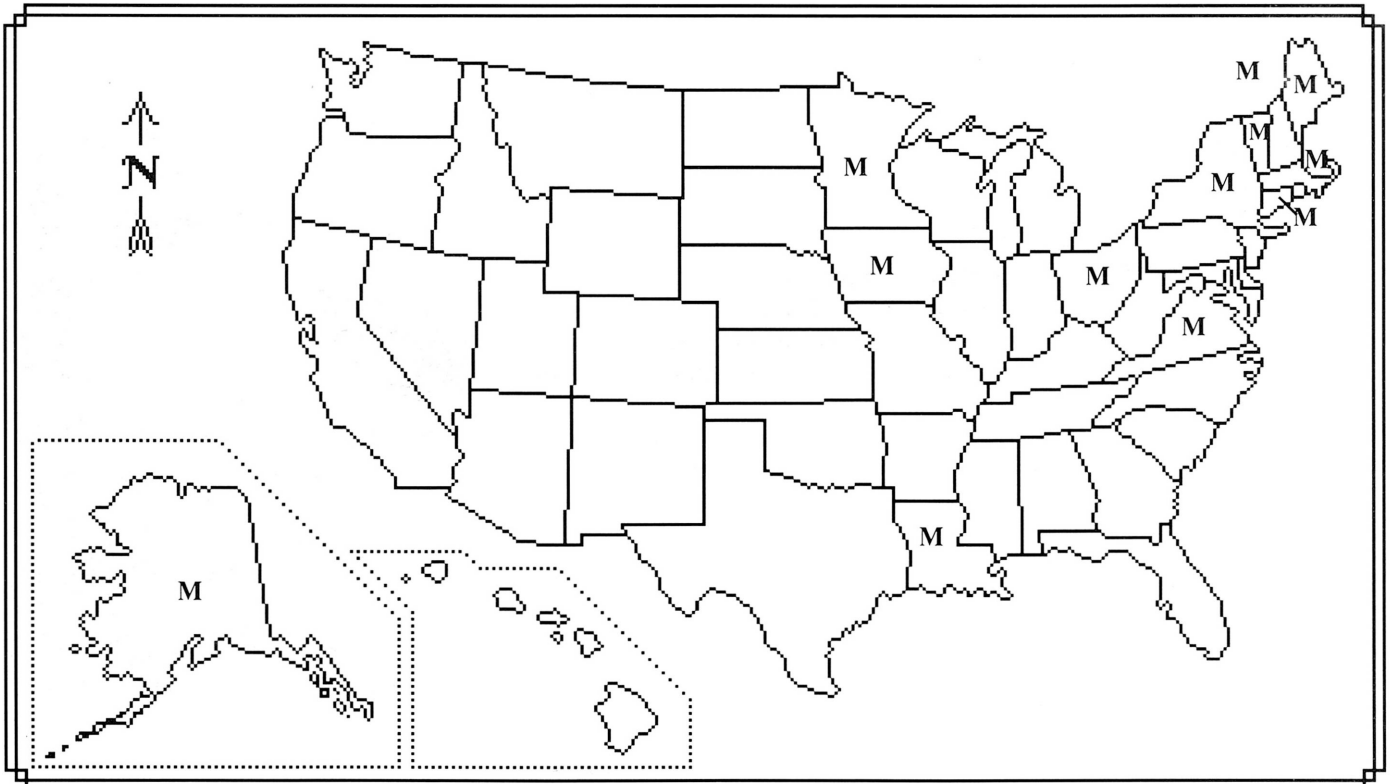
High School: Averaged 15 points and 17.3 rebounds per game at Jefferson High School... blocked six shots per contest setting a new school record... helped lead the team to a 23-1 record her senior year... First Team All-Northeast Conference... First Team All-Ashtabula County... Second Team All-District... Honorable Mention All-Ohio (UPI-AP Poll)... MVP Star Beacon Senior All-Star Classic with 25 points, 18 rebounds, and six blocked shots.

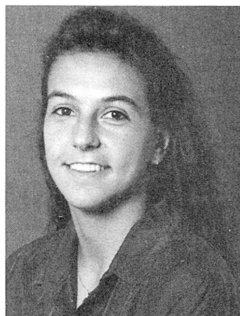
Personal: Captained the volleyball and track teams... a member of the National Honor Society with a 3.7 GPA... an undecided major... born April 7, 1973... the daughter of Linda Wolf.



<u>YEAR</u>	<u>G/GS</u>	<u>FG</u>	<u>FGA</u>	<u>FG%</u>	<u>FT</u>	<u>FTA</u>	<u>FT%</u>	<u>REB</u>	<u>A</u>	<u>TO</u>	<u>BL</u>	<u>ST</u>	<u>PTS</u>	<u>PPG</u>	<u>MIN</u>
91-92	7/0	3	8	.375	0	2	.000	6	0	4	0	0	6	0.9	24

The Maine Coaches and Players Across the Nation . . .





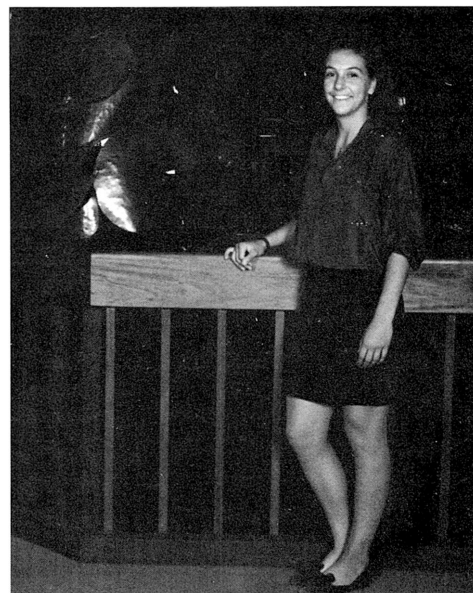
15 Catherine Gallant

Freshman Forward 5-11 Pincourt, Quebec

Graduated from Vaudreuil Catholic High School in 1989... Graduated from John Abbot CEJEP College in 1992... Named Federation Quebec College All-Star from 1989-92... a member of the Canadian Junior National Team in 1990...

a 1990-91 CEJEP College All-Star... a 1990-91 Junior National Tournament All-Star (Quebec Provincial Team)... the leading scorer in the Quebec Triple A College League in 1991 with 19.1 points per game... John Abbott College Team Captain from 1990-92... MVP for John Abbott in 1992... 1992 Athlete of the Year at John Abbott... scored 1,220 points, averaging 16 ppg over her three year career... pulled down 1,003 rebounds for an average of 13 rpg in three years... John Abbott College's All-Time Leading Rebounder.

Personal: A physical education major... born April 12, 1972... the daughter of Raymond and Mary Gallant.



FIRST YEAR PLAYER



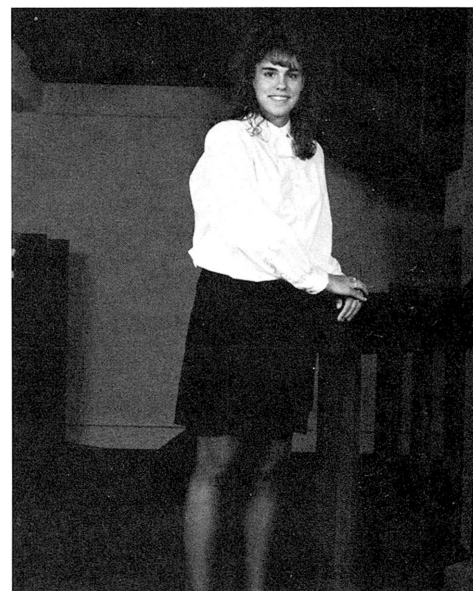
51 Stephanie Guidi

Freshman Forward 6-0 Stormville, N.Y.

A strong post player who can run the floor for the fast break... a very physical forward... played for coach Ed Pescatore at Carmel High School... a captain both her junior and senior years... averaged 15.6 points and 13.9 rebounds per

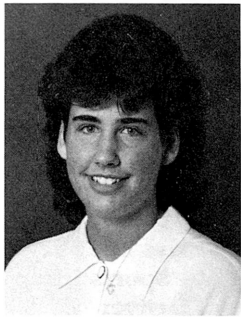
game... scored 1,125 career points... a member of the three-time Section I runner-up team... named First Team All-Westchester County in 1991 and 1992... All-Section three times... two-time All-State selection... Carmel High School's Most Valuable Player in 1991 and 1992.

Personal: Also ran track... an elementary education major... born October 11, 1974... the daughter of Larry and Pat Guidi.



FIRST YEAR PLAYER





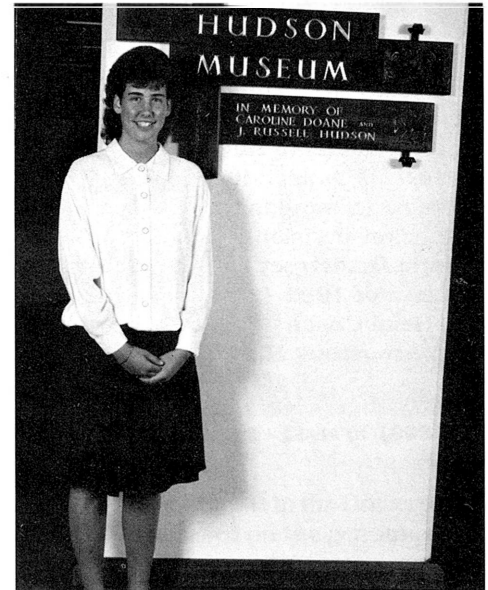
25 Becky Marsden

Freshman Forward 6-1 Bennington, Vt.

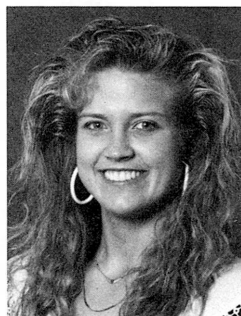
A strong post player who can bang around inside... fundamentally sound... has a soft touch around the basket... played for coach Patricia Levesque at Mt. Anthony Union High School... captained the team her senior year...

averaged 16.5 points and 13.5 rebounds per game... a member of the 1989 state championship team and the 1990 state second-place team... named the team's Most Valuable Player for two years... won three tournament MVP honors... Mt. Anthony Union's All-Time Leading Rebounder... First Team All-State... *USA Today* High School Honorable Mention... member of the New York AAU/Junior Olympic Team.

Personal: Played soccer and softball... an education major... born September 7, 1974... the daughter of James and Bernadette Marsden.



FIRST YEAR PLAYER



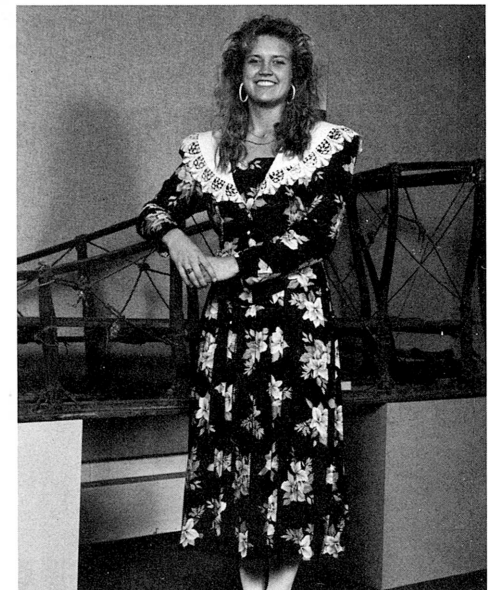
30 Stacia Rustad

Freshman Guard 5-7 Kenai, Alaska

A good athlete with great potential... played for coach Craig Jung at Kenai Central High School... captained the team both her junior and senior seasons... averaged 22.9 points, 7.0 rebounds and 5.0 assists in 1992... named State Sports-

writers Large Schools Player of the Year in 1992... named First Team All-State in 1991 and 1992... named *Clarion* (local newspaper) MVP in 1992... Conference MVP in region three in 1992... Region 3-District 4A All-Conference, 1990, 1991 and 1992 ... 1991 4A state champion... 1992 4A semi-finalist in State Tournament... first female at Kenai Central to score over 1,000 points... named Most Valuable Player three times... named Kenai's Female Athlete of the Year... 1992 *USA Today* Player of the Year in Alaska... named Converse All-American.

Personal Captained the volleyball and track teams... also ran cross-country, placing in the top-ten in the state every year... an education major... born July 29, 1974... the daughter of Ron and Elaine Rustad.



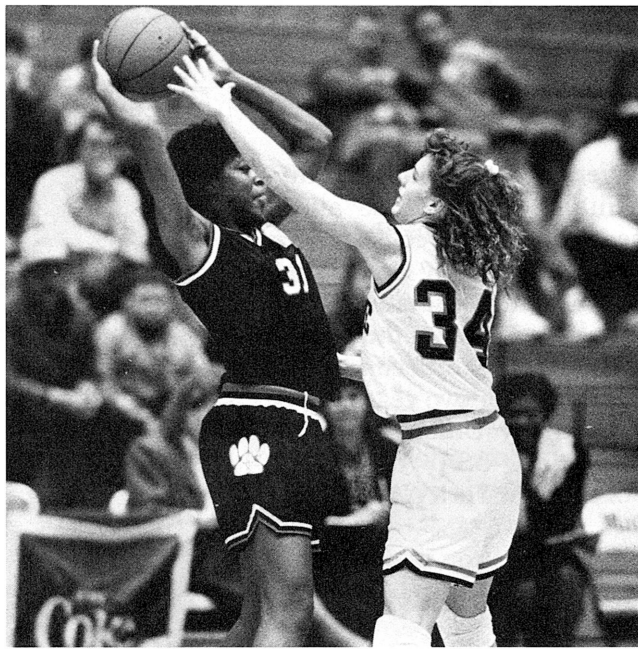
FIRST YEAR PLAYER



Why Maine?

I came to the University of Maine because I had the opportunity to play Division I basketball. A lot of people said I couldn't do it. I wanted to prove that I could. It was tough at first, but the team made it easier. The players made it all worth it. If I could do it over again, I wouldn't change my decision.

Julie Bradstreet
Class of 1992 -
Head Coach
Gen. Aroostook H.S.



Julie Bradstreet - Class of 1992; Head Basketball Coach, Central Aroostook H.S.

There are many things which influenced my decision to attend UMaine. The students, faculty, community and especially the athletes were the greatest influence. They make a person feel very welcome and someone is always there when you need a friend.

Katrina Krom - Class of 1995

Maine women's basketball has a tradition of commitment to both academics and athletics. The team unity not only helps make all the hard work worth it, but it has helped give me a home away from home.

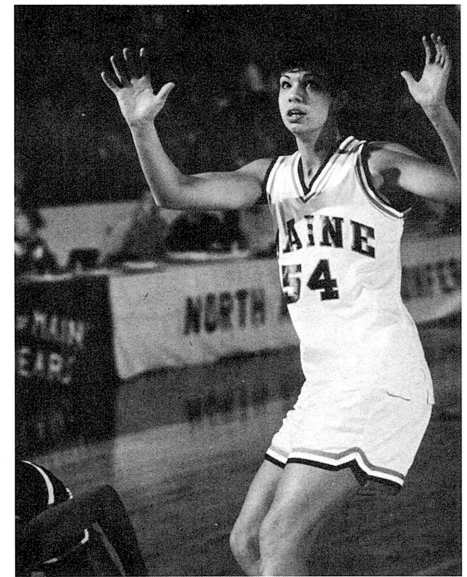
Cyndi Buetow - Class of 1994
Tri-Captain

I never wanted to wonder if I could play Division I basketball. I wanted to know. The best part about the University of Maine was the people I met. I will never forget my teammates. For four years they were my family away from home.

Jess Carpenter - Class of 1992
Graduate Assistant - Sports Info.
University of Denver

I came to the University of Maine to academically and athletically fulfill my potential to the highest. I felt that compared to other schools, UMaine could challenge me in both of those areas, while being surrounded by good, honest staff and students who could help support me in my decisions.

Sara Philbrick - Class of 1995



Cyndi Buetow - Class of 1994

It is a special time in this program's history that we are about to experience. Women's basketball at Maine under the new, exciting leadership of Joanne Palombo and her staff embodies the values, energy and enthusiasm that will enable this program to shine for years to come.

Michael Ploszek - Director of Athletics, University of Maine



Seana Dionne - Class of 1995

I came to Maine because I wanted to play basketball for a good Division I team. I also liked the people I met and the friendly atmosphere on campus.

Trixie Wolf - Class of 1995

Maine gave me an excellent opportunity to pursue my dreams of playing college basketball at the Division I level. The campus is beautiful and the atmosphere at the University is wonderful as well. You can't beat the team spirit and team unity. Your teammates and the coaching staff are like your family away from home.

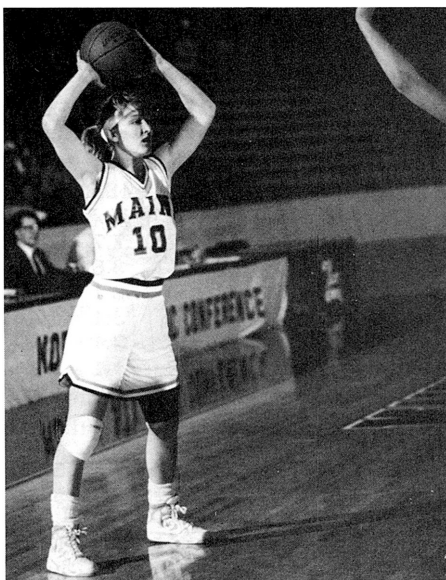
Katti Towle - Class of 1994

I chose the University of Maine because of their academic reputation, the friendly atmosphere, and the team unity that the girls displayed when I came for my visit last fall. I was impressed with how well the team got along and with how welcome they made visitors feel. I feel that I could not only get an excellent education but that I could also excel to a higher level of basketball through the Black Bear basketball program.

Becky Marsden - Class of 1996



Why Maine?



Erin Grealy - Class of 1995

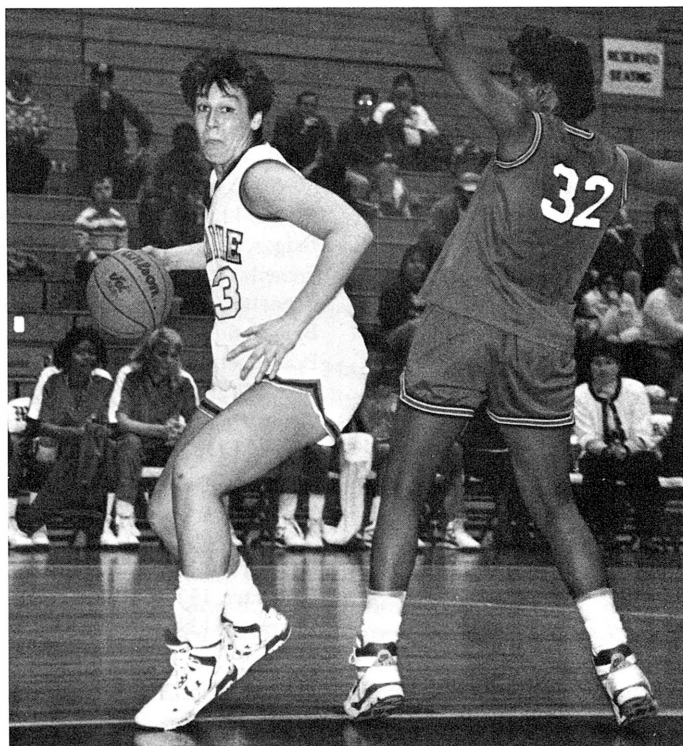
My decision to attend the University of Maine gave me the opportunity to escape the frivolous distractions of the urban universities and to concentrate on my studies in a relaxed atmosphere. Becoming a part of a Division I caliber team, such as the women's basketball team here at Maine, gave me the distinct advantage of being presented as a dedicated female athlete, an enterprising student and a woman determined to make her mark on the world.

Erin Grealy - Class of 1995

Attending the University of Maine gave me an opportunity to play a competitive Division I schedule while representing my home state. The campus atmosphere allowed me to grow not only as an athlete but more importantly as a person.

**Rachel Bouchard -
Class of 1991
University of Maine
Assistant Coach**

**Rachel Bouchard - Class of
1991, University of Maine
Assistant Women's Basketball
Coach.**



One of the many reasons I chose Maine was because of the tradition that the women's basketball team has in academic standings of all athletic teams on campus. Being surrounded by academic and athletic people here, I knew my four years here at Maine as a student-athlete would be very memorable. I am pursuing a speech communication degree and hope to help carry on the successful tradition here at Maine.

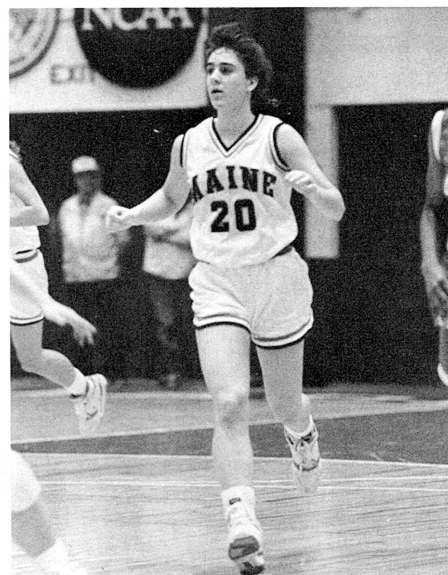
**Heather Briggs - Class of 1993,
Tri-Captain**

I picked the University of Maine because I really liked the campus and the environment that it's in. It's a lot like home back in Alaska. In addition, my teammates are great, and the athletic and academic programs are both really good.

Stacia Rustad - Class of 1996

I chose the University of Maine to pursue both my academic and athletic goals because it is a great school, rich in tradition in women's basketball. Being a state university, and the only Division I program in Maine, I saw it as a great opportunity to be part of a great program and also represent my home state.

Seana Dionne - Class of 1995



Heather Briggs - Class of 1993

My decision to come to the University of Maine was based on the genuine comradery I felt among the teammates. I knew I wanted to be a member of this family away from home.

**Chrissy Strong
Class of 1994, Tri-Captain**

The main reason I chose the University of Maine was the fact that it was a great, new experience for me. It is the first time being miles away from home and on my own. I like the beautiful campus and the atmosphere was very comfortable and welcoming.

**Catherine Gallant
Class of 1996**

As a local resident, I have long been impressed with the community spirit focused on the women's basketball program here at the University of Maine. Coming out of high school, none of the other colleges I was looking at could compare. When faced with an opportunity to receive a quality education, be a part of a winning tradition and play basketball of this caliber with a group of women I admire so much... the chance was just too good to pass up.

**Rita Sullivan
Class of 1995**



1991-92 Maine Women's Basketball Statistics/Results

20-9 Overall (11-2 NAC): Home 10-3; Away 6-5; Neutral 4-1

Player	G/GS	FG	FGA	PCT	Three Point			FT	FTA	PCT	REB	AVG	PF-D	A	TO	BL	S	TP	AVG	MIN
					FG	FGA	PCT													
Frenette	29/28	155	325	.477	0	0	.000	80	117	.684	165	5.7	102-7	41	96	30	38	390	13.4	933
Carpenter	24/21	133	254	.524	0	3	.000	53	75	.707	170	7.1	74-2	27	50	23	20	319	13.3	739
Briggs	29/27	152	344	.442	9	38	.237	70	93	.753	233	8.0	71-0	56	68	5	45	383	13.2	840
Bradstreet	29/29	86	247	.348	30	97	.309	103	129	.798	144	5.0	76-0	118	96	8	107	305	10.5	1091
Goodhue	29/23	74	219	.338	23	79	.291	52	69	.754	90	3.1	68-2	91	78	5	38	223	7.7	784
Buetow	29/7	50	120	.417	0	0	.000	11	30	.367	73	2.5	66-4	18	49	5	12	111	3.8	430
Dionne	18/7	20	58	.345	1	5	.200	15	24	.625	32	1.8	29-0	20	22	4	7	56	3.1	296
Grealy	18/0	19	64	.297	0	1	.000	18	26	.692	25	1.4	23-0	16	22	1	6	56	3.1	172
Strong	11/1	9	29	.310	1	3	.333	4	10	.400	19	1.7	18-0	20	35	1	17	23	2.1	208
Philbrick	17/0	8	26	.308	0	0	.000	3	12	.250	21	1.2	16-0	2	17	0	0	19	1.1	127
Sullivan	13/1	3	16	.188	0	0	.000	7	10	.700	12	0.9	10-0	2	12	1	5	13	1.0	92
Wolf	7/0	3	8	.375	0	0	.000	0	2	.000	6	0.9	6-0	0	4	0	0	6	0.9	24
Krom	3/0	0	2	.000	0	0	.000	0	0	.000	4	1.3	3-0	1	0	0	0	0	0.0	14
MAINE	29/29	712	1712	.416	64	226	.283	416	597	.697	1133	39.1	562-15	412	549	83	295	1904	65.7	5750
Opponent	29/29	622	1604	.388	69	214	.322	417	621	.671	1113	38.4	552-17	331	610	80	252	1673	57.7	5750

1991-92 University of Maine Women's Basketball Results (20-9 Overall, 11-2 NAC)

Me	Opponent	Score	Att.	Leading Scorers	Leading Rebounders	Most Assists	3-Pl. FG's
71	Tennessee	86	5,328	Goodhue, 24	Buetow, 7	Fren., Brad., 2	Goodhue, 4-5
57	Wisc.-GB #	58	1,822	Bradstreet, 16	Briggs, 7	Bradstreet, 5	Bradstreet, 1-1
53	South Carolina #	56	861	Briggs, 23	Briggs, 13	Briggs, Brad., 3	Bradstreet, 3-5
55	Dartmouth	60	250	Frenette, 17	Briggs, 12	Frenette, 4	Bradstreet, 1-1
87	Cleveland St. \$	59	548	Briggs, 26	Briggs, 13	Goodhue, 11	Goodhue, 2-7
46	Fairfield \$	50	420	Briggs, 15	Briggs, 16	Bradstreet, 5	Goodhue, 1-6
83	Holy Cross	71	1,175	Bradstreet, 17	Goodhue, 6	Brad., Good., 7	Bradstreet, 1-1
52	St. Peter's *	47	1,126	Frenette, 22	Bradstreet, 8	Bradstreet, 3	Bradstreet, 1-1
71	James Madison	54	929	Frenette, 22	Frenette, 9	Carpenter, 7	Bradstreet, 3-4
56	St. Mary's %	69	112	Briggs, 20	Briggs, 10	Goodhue, 4	
75	Canisius %	72	109	Frenette, 19	Four with, 6	Bradstreet, 8	
90	Sacramento St. %	83	79	Carpenter, 26	Briggs, 14	Goodhue, 7	Bradstreet, 2-5
59	Hartford	54	853	Carpenter, 20	Briggs, 6	Bradstreet, 6	
62	Vermont	69	1,150	Briggs, 16	Briggs, 9	Briggs, 4	Dionne, 1-2
71	Colgate	42	863	Carpenter, 12	Brad., Good., 5	Bradstreet, 8	
61	Drexel	45	200	Bradstreet, 24	Frenette, 12	Brad., Buetow, 3	Bradstreet, 4-12
75	Delaware	59	318	Fren., Carp., 16	Briggs, 11	Fren., Good., 5	Goodhue., 3-5
55	Vermont	73	1,041	Frenette, 19	Briggs, 6	Bradstreet, 5	Bradstreet, 2-3
56	Hartford	53	227	Bradstreet, 19	Frenette, 11	Bradstreet, 5	Briggs, 1-2
74	Boston Univ.	57	853	Briggs, 21	Frenette, 7	Bradstreet, 5	Goodhue, 1-1
54	Northeastern	53	681	Carpenter, 15	Briggs, 6	Bradstreet, 5	Bradstreet, 1-1
65	New Hampshire	55	1,055	Bradstreet, 18	Bradstreet, 12	Briggs, 3	Briggs, 1-1
57	Northeastern	53	121	Briggs, 20	Briggs, Carp., 12	Carp., Good., 3	Brad., Good., 1-2
83	Boston University	52	226	Carpenter, 36	Carpenter, 16	Briggs, 6	Goodhue, 2-4
73	Delaware	54	739	Frenette, 20	Briggs, Fren., 9	Goodhue, 4	Bradstreet, 2-3
71	Drexel	54	836	Frenette, 22	Briggs, Carp., 9	Goodhue, 7	Brad., Good., 1-2
NAC TOURNAMENT							
68	Drexel	57	679	Bradstreet, 19	Bradstreet, 15	Strong, 5	Goodhue, 1-5
74	New Hampshire	65	3,180	Carpenter, 21	Carpenter, 13	Goodhue, 7	Briggs, Good., 1-1
50	Vermont	70	3,228	Frenette, 16	Carpenter, 13	Bradstreet, 5	Bradstreet, 2-7

#-Downeast Classic, Bangor, Maine

\$-Warner's Classic, Fairfield, Conn.

*-Bath Iron Works Classic, Portland, Me.

%-Sun & Fun Classic, Miami, Fla.

Bold indicates home game.



A Look Back at the 1991-92 Season

The Black Bears, coming off their second consecutive North Atlantic conference title in 1991, were picked to finish second in the conference in 1992. The Black Bears hoped to exceed those expectations, but fell short of that goal as they lost to Vermont in the North Atlantic Conference Championship, 70-50.

Vermont went on to become the first NAC team ever to be invited to the NCAA tournament, losing to George Washington in the first round.

Although Maine did not win the conference title, the Black Bears showed that they could play ball without standout Rachel Bouchard, who graduated in 1991. The Black Bears posted their fourth consecutive 20-win season under head coach Trish Roberts.

The beginning of the season saw Maine at 0-4 in the record books; the worst start for the team since 1983-84.

The season opener was against the pre-season number one and defending national champion, Tennessee Lady Vols. Although the Black Bears lost 86-71, Maine saw some bright spots in the line-up as four players scored in double figures.

The Downeast Classic brought the home opener and two more losses for the Black Bears. Losing to Wisconsin-Green Bay and South Carolina, Maine hit the road in search of their first victory against Dartmouth. Head Coach Trish Roberts tried a different line-up, starting two freshmen, but once again they were turned away.

Injuries played a key role in each of Maine's early season losses. Senior center Jess Carpenter missed games two through six with a badly sprained right ankle. Starting point guard Chris Strong injured her knee in the home opener and missed the next 10 games. Erin Grealy suffered a concussion in the South Carolina contest and did not travel to Dartmouth and Fairfield.

Maine picked up their first win on the season in the first round of the Warner's Classic in Fairfield, Conn. The Black Bears defeated Cleveland State, 87-59, behind Heather Briggs' 26-point, 13-rebound performance.

Heading into the holiday lay-off, Maine defeated St. Peter's and Holy Cross to pick up their second and third wins respectively.

Julie Bradstreet set a new school record in the steals category with 10 against Canisius College on Jan. 3. Her 10 steals in a single game also placed her in a tie for sixth in the nation in 1991-92.

Entering their conference schedule, the Black Bears held an even 6-6 record. The team lost only two more games in the regular season, both to undefeated Vermont. Maine ended the regular season with an 18-8 overall record, while holding an 11-2 mark in the NAC.

On Jan. 13, Tracey Frenette became only the fifth Maine player to surpass the 1,000 career point mark. Frenette scored the 1,000th point with 9:12 remaining in the first half of the Colgate game.

Maine played their first contest in the newly expanded Alford Arena, defeating Boston University on Jan. 30. The Black Bears still have not lost a contest there and enter 1992-93 with a 5-0 record in the new facility.

Maine used a first-round home-court advantage to defeat Drexel, 68-57 in the quarterfinals. Julie Bradstreet led the team with 19 points and 15 rebounds for the contest.

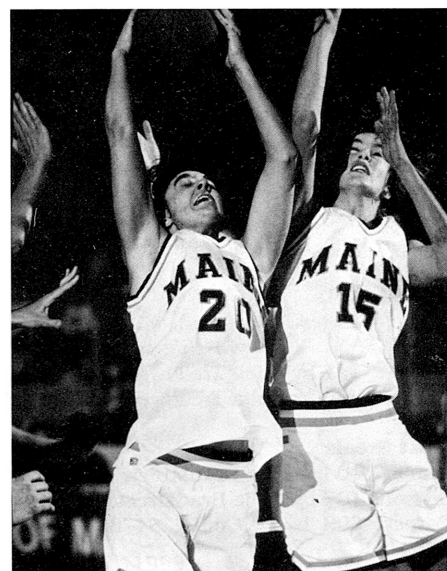
In the semi-final contest, Maine met New Hampshire. The Black Bears defeated the Wildcats, 74-65 in the semi-final game and earned the right to play Vermont in the championship game.

The Maine team went into the contest with nothing to lose; they were the underdogs. On the other hand number one seed Vermont had everything to lose; they were the favorites and they were the only remaining undefeated team in the nation.

Vermont lived up to their number one seed and defeated the Black Bears, 70-50. Maine ended its season at 20-9, 11-2.

Four out of Maine's five starters averaged double figures in scoring last season, and three of them were within two-tenths of a point of each other. Tracey Frenette scored 13.4 points and grabbed 5.7 caroms per game, Jess Carpenter averaged 13.3 ppg and 7.1 rpg and Heather Briggs scored 13.2 ppg and 8.0 rpg. Julie Bradstreet also scored in double figures averaging 10.5 ppg.

Earning Player of the Week honors last year were Briggs, Frenette and



Heather Briggs led the Black Bears with 8.0 rebounds per game, placing her fifth in the conference.

Carpenter.

Briggs earned the honor for the week of Dec. 9 for her 55-point, 41-rebound three-game effort against Dartmouth, Cleveland State and Fairfield.

Frenette was named the following week for her 36-point two-game performance against Holy Cross and St. Peter's. Frenette shot 61 percent from the field during the week.

Carpenter earned her first Player of the Week award on Feb. 17 for a 46-point, 28-rebound effort versus Northeastern and Boston University. Carpenter's 36 points and 16 rebounds, against Boston University, were new career-highs for her, as well as the season-highs for the team.

Post-season honors were given to four Maine players last year. Bradstreet and Briggs were both named to the North Atlantic Conference Second-Team while Carpenter was named to the Conference First-Team and Frenette was named to the All-Tournament Team.

Graduating from last year's Black Bear squad are four out of the five starters and four out of the top five scorers on the team.

Bradstreet, Carpenter, Frenette and Carrie Goodhue combined for 50 percent of the team's total rebounding and an unbelievable 65 percent of the team's total offense in the 1991-92 season.



University of Maine Women's Basketball Records

INDIVIDUAL RECORDS

Most Points

Game: 46 by Rachel Bouchard vs. VCU, 1/19/89
 Season: 784 by Rachel Bouchard, '89-'90
 Career: 2,409 by Rachel Bouchard, '87-'91

Most Rebounds

Game: 29 by Wendy Farrington vs. Southern Maine, '79-'80
 Season: 380 by Liz Coffin, '84-'85
 Career: 1,351 by Liz Coffin, '84-'88

Most Assists

Game: 14 by Julia Treadwell vs. New Brunswick, '83-'84
 Season: 191 by Julia Treadwell, '83-'84
 Career: 426 by Julia Treadwell, '80-'84

Most Steals

Game: 10 by Julie Bradstreet, 1/3/92
 Season: 107 by Julie Bradstreet, '91-'92
 Career: 309, by Liz Coffin, '84-'88

Most Blocked Shots

Game: 6 by Jess Carpenter vs. Drake, 12/8/90
 Season: 53 by Lauree Gott, '86-'87
 Career: 147, by Rachel Bouchard, '87-'91

Most Field Goals Made

Game: 19, by Rachel Bouchard vs. VCU, 12/9/88
 Season: 263, by Rachel Bouchard, '89-'90
 Career: 875, by Rachel Bouchard, '87-'91

Most FG's Attempted

Game: 32, by Wendy Farrington vs. Southern Maine, '79-'80
 Season: 496, by Liz Coffin, '85-'86
 Career: 1,779, by Liz Coffin, '84-'88

Field Goal Percentage

Game: .909, by Rachel Bouchard vs. Northeastern, 2/13/91
 Season: .609, by Rachel Bouchard, '90-'91
 Career: .541, by Rachel Bouchard, '87-'91

Three-Point FG's Made

Game: 5, by Carrie Goodhue vs. Colgate, 2/15/91
 Season: 34, by Cathy Iaconeta, '89-'90
 Career: 105, by Carrie Goodhue, '88-'92

Three-Point FG's Attempted

Game: 12, by Julie Bradstreet vs. Drexel, 1/17/92
 Season: 97, by Julie Bradstreet, '91-'92
 Career: 271, by Carrie Goodhue, '88-'92

Three-Point FG Percentage

Game: 1.000, by Carrie Goodhue vs. (min. 3 att.) Cornell, 11/23/89
 Season: .446, (25/56) by Carrie Goodhue, (min. 35 att.) '88-'89
 Career: .387, by Carrie Goodhue, '88-'92

Free Throws Made

Game: 19, by Rachel Bouchard vs. Brooklyn, 1/13/89
 Season: 198, by Rachel Bouchard, '89-'90
 Career: 655, by Rachel Bouchard, '87-'91

Free Throws Attempted

Game: 27, by Rachel Bouchard vs. Brooklyn, 1/13/89
 Season: 287, by Rachel Bouchard, '89-'90
 Career: 936, by Rachel Bouchard, '87-'91

Free Throw Percentage

Game: 1.000 (13/13), by Emily Ellis vs. (min. 10 att.) Northeastern, '83-'84
 1.000 (13/13), by Liz Coffin vs. Boston University, '87-'88
 Season: .890 (31/35), by Lisa Cormier, '82-'83
 Career: .793, by Lisa Cormier, '80-'84

Most Field Goal Attempts

Game: 111 vs. UNH, '76-'77, vs. Acadia, '76-'77
 Season: 2,208, '82-'83

Most Free Throws

Game: 33 vs. St. Joseph's (Me.), '83-'84
 Season: 450, '83-'84

Most Free Throw Attempts

Game: 49 vs. UM-Presque Isle, '76-'77
 Season: 644, '83-'84

Most Points

Game: 134 vs. St. Joseph's (Me.), '83-'84
 Season: 2,155, '86-'87

Most Rebounds

Game: 80 vs. UM-Presque Isle, '86-'87
 Season: 1,395, '86-'87

Highest Field Goal Percentage

Game: .604 vs. St. Joseph's (Me.), '83-'84
 Season: .451, '83-'84

Highest Free Throw Percentage

Game: .962 vs. Southern Maine (25/26), '83-'84
 Season: .733, '86-'87

Most Assists

Game: 34 vs. St. Joseph's (Me.), '83-'84
 Season: 545, '83-'84

Most Steals

Game: 29 vs. UM-Farmington, '83-'84
 Season: 370, '83-'84

Highest Scoring Average

79.6, '83-'84

Most Wins

24, '86-'87

Highest Win Percentage

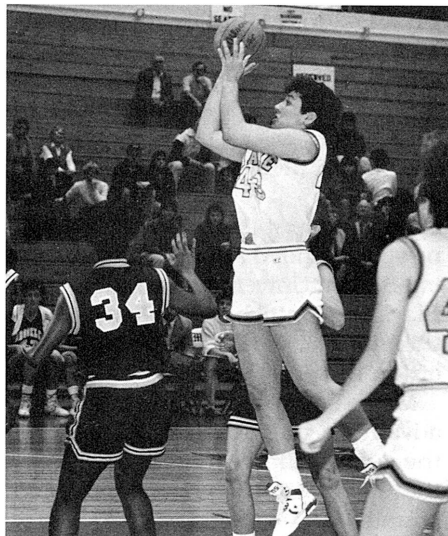
.857, '86-'87

Most consecutive Wins

18, '85-'86

Widest Win Margin

96 pts (134-38) vs. St. Joseph's, '83-'84



Rachel Bouchard, a part-time assistant coach for the Black Bears, holds 16 school records.

TEAM RECORDS

Most Field Goals

Game: 58 vs. St. Joseph's (Me.), '83-'84
 Season: 856, '86-'87



Carrie Goodhue holds six three-point records.



Maine vs. All -Time Opponents

<u>Opponent</u>	<u>First Game</u>	<u>Last Game</u>	<u>Mtgs.</u>	<u>UM</u>	<u>Opp.</u>	<u>Opponent</u>	<u>First Game</u>	<u>Last Game</u>	<u>Mtgs.</u>	<u>Maine</u>	<u>Opp.</u>
Acadia	1976	1976	1	1	0	San Diego St.	1987	1989	2	1	1
Alabama-Birmingham	1991	1991	1	1	0	Siena	1984	1991	5	4	1
Army	1983	1983	2	1	1	South Carolina	1992	1992	1	0	1
Bates	1975	1981	3	3	0	Southern Cal	1987	1987	1	0	1
Boston University	1977	1992	25	15	10	So. Connecticut	1980	1983	2	0	2
Bowdoin	1978	1983	9	9	0	Southern Maine	1976	1986	16	16	0
Brooklyn	1977	1989	11	10	1	Springfield	1976	1986	2	1	1
Brown	1983	1989	4	2	2	Stetson	1990	1990	1	1	0
Canisius	1992	1992	1	1	0	Syracuse	1989	1989	1	1	0
Ct. Conn.	1977	1989	11	9	2	Tennessee	1990	1992	2	0	2
Ct. Mich.	1990	1990	1	1	0	Tulane	1987	1987	1	1	0
Cheyney	1986	1987	2	2	0	Utica	1987	1988	2	2	0
Cleveland State	1992	1992	1	1	0	Vanderbilt	1991	1991	1	0	1
Colby	1978	1986	8	7	1	VCU	1989	1989	1	0	1
Colgate	1987	1992	7	7	0	Villanova	1991	1991	1	0	1
Connecticut	1979	1989	6	1	5	Vermont	1975	1992	33	24	9
Concordia	1980	1982	2	2	0	Virginia	1984	1984	1	0	1
Cornell	1991	1991	1	1	0	Wagner	1990	1990	1	1	0
Dartmouth	1984	1992	5	4	1	Wake Forest	1990	1990	1	1	0
Delaware	1992	1992	2	2	0	William & Mary	1987	1987	1	1	0
Drake	1991	1991	1	1	0	Wisconsin-Green Bay	1992	1992	1	0	1
Drexel	1985	1982	5	5	0	Wyoming	1990	1990	1	1	0
E. Conn.	1981	1982	2	1	1						
E. Washingt.	1989	1989	1	1	0						
Fairfield	1984	1992	2	0	2						
Florida	1990	1990	1	0	1						
UM-Farmtn.	1975	1985	20	18	2						
Georgia Tech	1989	1989	1	0	1						
Hartford	1986	1992	15	15	0						
Harvard	1984	1990	7	6	1						
Hofstra	1985	1985	1	1	0						
Holy Cross	1984	1992	6	2	4						
Husson	1975	1986	18	16	2						
Illinois St.	1990	1990	1	0	1						
James Madison	1992	1992	1	1	0						
Kentucky	1990	1990	1	0	1						
Lamar	1991	1991	1	0	1						
Laval	1979	1981	3	3	0						
Lehigh	1986	1986	1	1	0						
Louisville	1989	1989	1	1	0						
Loyola Coll.	1984	1984	1	1	0						
Manhattan	1984	1984	1	1	0						
Massachusetts	1976	1989	12	8	4						
Miami	1987	1987	1	1	0						
Michigan St.	1989	1989	1	0	1						
Middle Tennessee	1986	1986	1	1	0						
Mt. Allison	1979	1983	3	3	0						
Navy	1987	1987	1	1	0						
NC-Charlotte	1991	1991	1	0	1						
NC State	1989	1989	1	0	1						
Nebraska	1987	1987	1	1	0						
New Brunswick	1979	1985	8	4	4						
New Hampshire	1975	1992	26	16	11						
Northeastern	1978	1992	23	11	12						
Plymouth St.	1978	1982	3	3	0						
UM-PI	1975	1987	14	14	0						
New Orleans	1990	1990	1	0	1						
Providence	1978	1989	6	1	5						
Quebec-3 Rivers	1979	1979	1	1	0						
Queens	1984	1984	2	2	0						
Rhode Island	1975	1991	12	5	7						
Richmond	1991	1991	1	0	1						
Rutgers	1990	1990	1	1	0						
SE Louisiana	1990	1990	1	0	1						
St. Joseph's	1982	1984	4	4	0						
St. Mary's (Cal.)	1992	1992	1	0	1						
St. Peter's	1991	1992	2	2	0						
Sacramento State	1992	1992	1	1	0						

Year-by-Year Results

<u>Season</u>	<u>Record</u>	<u>Coach</u>	<u>Captains</u>	<u>Post-season</u>
75-76	12-5	Eilene	C. Higgins	MAIAW Champ.
		Fox	D. Dalfonso	EAIAW Tourney
76-77	15-3	Eilene	J. Thrope	MAIAW Champ.
		Fox		EAIAW Tourney
77-78	13-7	Eilene	L. Osgood	
		Fox		
78-79	14-6	Eilene	C. Pazdziorko	MAIAW Champ.
		Fox	C. Lamontagne	
79-80	16-4	Eilene	C. Lamontagne	MAIAW Champ.
		Fox	S. Baker	
80-81	16-7	Eilene	B. Dunham	MAIAW Champ.
		Fox	M. Warner	
81-82	16-6	Eilene	B. Hamilton	
		Fox	C. Nason	
82-83	16-12	Eilene	C. Nason	MAIAW Champ.
		Fox		
83-84	16-11	Peter	L. Cormier	MAIAW Champ.
		Gavett	J. Treadwell	
			T. Gardiner	
84-85	21-9	Peter	E. Ellis	Seaboard Conf. (Finalists)
		Gavett		
85-86	22-7	Peter	L. Gott	Seaboard Conf. (Cons. Champ.)
		Gavett	M. Walker	
86-87	24-4	Peter	L. Coffin	Seaboard Conf. (Finalists)
		Gavett	K. Nobert	
87-88	23-6	Peter	L. Coffin	Seaboard Conf. (Finalists)
		Gavett	K. Nobert	
			C. Cummings	
88-89	19-8	Trish	R. Bouchard	Seaboard Conf. (Champion)
		Roberts	C. Iaconeta	
			K. Nobert	
89-90	23-7	Trish	R. Bouchard	North Atlantic (Champion)
		Roberts	C. Iaconeta	
			B. Sullivan	NWIT
90-91	20-8	Trish	R. Bouchard	North Atlantic (Champion)
		Roberts		
91-92	20-9	Trish	J. Bradstreet	North Atlantic (Runners-Up)
		Roberts	T. Frenette	



Sixteen Years In Review

1975-76

Rhode Island 91, Maine 71
 Maine 68, New Hampshire 58
 Maine 95, Maine-Farmington 36
 Maine 79, Bates 42
 Maine 90, Maine-Presque Isle 55
 Maine 70, Husson 43
 Maine 74, Southern Maine 57
 Vermont 75, Maine 71
 Maine 92, Maine-Presque Isle 58
 Maine 82, Southern Maine 57
 Maine 63, Maine-Farmington 26
 Husson 51, Maine 49
 Rhode Island 103, Maine 65
 Maine 69, Massachusetts 63
 Springfield 69, Maine 54
 Maine 93, Southern Maine 57
 Maine 63, Husson 53

1976-77

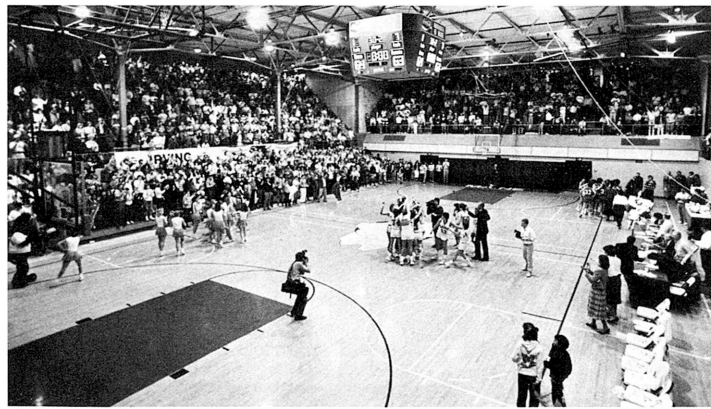
Maine 64, Acadia 54
 Maine 58, Massachusetts 56
 Maine 61, New Hampshire 58
 Maine 82, Maine-Farmington 40
 Maine 104, Maine-Presque Isle 46
 Maine 82, Rhode Island 76
 Maine 58, Husson 48
 Maine 93, Southern Maine 42
 Vermont 75, Maine 61
 Maine 72, Maine-Farmington 56
 Maine 83, Husson 45
 Maine 76, Maine-Presque Isle 46
 Maine 57, Southern Maine 28

1977-78

Massachusetts 77, Maine 68
 Boston University 66, Maine 54
 Maine 70, Southern Maine 44
 Maine 72, New Hampshire 69
 Maine 70, Maine-Farmington 52
 Maine 79, Southern Maine 45
 Maine 74, Rhode Island 72
 Maine 76, Husson 65
 Maine 70, Vermont 51
 Maine 75, Bowdoin 59
 Maine 97, Maine-Presque Isle 47
 Providence 72, Maine 53
 Maine 82, Colby 48
 Maine 77, Maine-Presque Isle 60
 Maine 83, Husson 58
 Maine-Farmington 72, Maine 66

1978-79

Massachusetts 87, Maine 58
 Boston University 78, Maine 67
 Maine 77, Plymouth State 54
 New Hampshire 92, Maine 87
 Maine 68, Maine-Farmington 49



Memorial Gym was the home of the Black Bears until 1989. Maine has since played in the Bangor Auditorium and now plays home games at the expanded Alford Sports Arena.

Rhode Island 80, Maine 69
 Maine 62, Husson 42
 Maine 100, Vermont 82
 Maine 64, Southern Maine 48
 Maine 88, Connecticut 75
 Maine 75, Bowdoin 61
 New Brunswick 98, Maine 65
 Maine 88, Maine-Presque Isle 51
 Maine 71, Husson 48
 Maine 77, Maine-Farmington 40
 Maine 81, Colby 68
 Providence 62, Maine 50

1979-80

Maine 100, Quebec 42
 Maine 69, Laval 62
 Maine 113, Moncton 60
 Moncton Little 90, Maine 76
 Maine 70, Plymouth State 48
 New Hampshire 95, Maine 81
 Maine 76, Southern Maine 69
 Rhode Island 78, Maine 62
 Maine 86, Maine-Farmington 56
 Maine 88, Bowdoin 54
 Maine 74, Vermont 49
 Boston University 83, Maine 58
 Maine 70, Massachusetts 59
 Maine 69, Maine-Farmington 54
 Maine 95, Colby 58
 Maine 82, Maine-Presque Isle 29
 Maine 79, Husson 57
 Maine 91, Bates 41
 Maine 69, Husson 50
 Maine 76, Bowdoin 58

1980-81

Maine 71, Concordia 70
 Southern Conn. 73, Maine 66
 New Hampshire 83, Maine 61
 Massachusetts 97, Maine 62
 Boston University 88, Maine 42
 Maine 75, Maine-Farmington 44
 Maine 67, Southern Maine 35
 Rhode Island 80, Maine 63
 Maine 73, Bowdoin 58

Maine 52, Maine-Farmington 36
 New Brunswick 67, Maine 60
 Maine 66, Bowdoin 41
 Maine 83, Vermont 62
 Maine 83, Vermont 80
 Maine 113, Maine-Presque Isle 44
 Maine 106, Plymouth State 68
 Maine 86, Husson 61
 Maine 65, Eastern Connecticut 60
 Connecticut 72, Maine 55
 Maine 80, Colby 52
 Maine 106, Bates 37
 Maine 79, St. Joseph's 59
 Maine 58, Southern Maine 43

1981-82

Maine 75, Mt. Allison 39
 New Brunswick 75, Maine 65
 Maine 67, New Brunswick 62
 Maine 88, Bowdoin 54
 New Hampshire 83, Maine 51
 Maine 73, Laval 48
 Maine 53, Southern Maine 40
 Rhode Island 78, Maine 68
 Maine 66, Maine-Farmington 40
 Maine 91, Plymouth State 55
 Maine 65, New Brunswick 53
 Maine 84, Vermont 81
 Maine 87, Vermont 70
 Maine 93, Maine-Farmington 30
 Maine 85, St. Joseph's 45
 Massachusetts 73, Maine 57
 Connecticut 82, Maine 45
 Maine 98, Maine-Presque Isle 48
 Maine 65, Colby 64
 Maine 85, Husson 45
 Maine 71, St. Joseph's 47
 Colby 58, Maine 47

1982-83

Maine 53, Ottawa 45
 La Redoute 79, Maine 76
 Eastern Conn. 49, Maine 48
 Central Conn. 89, Maine 79
 Maine 60, New Brunswick 56
 Connecticut 81, Maine 49



New Hampshire 91, Maine 69
 Maine 71, Prince Edward Island 51
 Maine 75, Carleton 53
 Providence 76, Maine 49
 Army 83, Maine 54
 Southern Maine 75, Maine 74
 Rhode Island 76, Maine 44
 Maine 64, Maine-Farmington 40
 Northeastern 73, Maine 56
 New Brunswick 75, Maine 72
 Maine 76, Vermont 66
 Maine 72, Vermont 63
 Maine-Farmington 65, Maine 61
 Maine 85, Bowdoin 45
 Maine 73, Massachusetts 71
 Maine 84, St. Joseph's 43
 Maine 78, Colby 65
 Maine 77, Prince Edward Island 49
 Maine 81, Maine-Presque Isle 69
 Maine 100, Maine-Machias 52
 Maine 80, Nasson 58
 Maine 74, Southern Maine 59

1983-84

Southern Connecticut 80, Maine 64
 Boston University 47, Maine 41
 Army 77, Maine 63
 Maine 84, Harvard 50
 Maine 93, Mt. Allison 40
 Maine 95, New Brunswick 84
 Maine 134, St. Joseph's 38
 Connecticut 78, Maine 61
 Maine 86, Queens 58
 Holy Cross 75, Maine 59
 Northeastern 87, Maine 64
 Brown 60, Maine 58
 Maine 90, Husson 62
 Maine 85, Southern Maine 71
 Northeastern 76, Maine 70
 Maine 89, Maine-Farmington 59
 Maine 111, Maine-Presque Isle 63
 New Brunswick 83, Maine 59
 Maine 87, Maine-Farmington 37
 Maine 72, Massachusetts 71
 New Hampshire 83, Maine 65
 Maine 99, Vermont 72
 Maine 64, Vermont 47
 Maine 73, Colby 63
 Rhode Island 109, Maine 67
 Maine 104, Maine-Presque Isle 44
 Maine 111, Husson 75

1984-85

Virginia 115, Maine 57
 Maine 69, Manhattan 57
 Siena 55, Maine 52
 Maine 86, Harvard 56
 Fairfield 75, Maine 66
 Maine 83, Brooklyn 61

Maine 83, Brooklyn 39
 Maine 81, Loyola 48
 Maine 69, Queens 66
 Maine 55, Boston University 39
 Maine 67, Dartmouth 47
 Maine 65, Boston University 52
 Maine 83, Central Connecticut 63
 Maine 67, Brown 55
 Maine 74, Vermont 55
 Vermont 67, Maine 64
 Northeastern 55, Maine 46
 Holy Cross 68, Maine 61
 Maine 79, Husson 46
 Maine 102, Southern Maine 54
 Maine 89, New Brunswick 51
 Northeastern 45, Maine 42
 Maine 83, Maine-Farmington 43
 Maine 63, Laval 32
 Maine 66, Massachusetts 65
 Maine 84, Colby 67
 Maine 65, Rhode Island 57
 New Hampshire 65, Maine 55
 Maine 62, New Hampshire 59
 Northeastern 73, Maine 59

1985-86

Maine 76, Massachusetts 66
 Maine 87, Siena 54
 Maine 79, Husson 26
 Maine 86, Brooklyn 72
 Maine 80, Brooklyn 62
 Maine 58, Harvard 56
 Maine 84, Hofstra 57
 Maine 56, Drexel 48
 Maine 70, Dartmouth 51
 Maine 61, Boston University 57
 Maine 57, Northeastern 53
 Maine 71, Hartford 53

Maine 56, Vermont 54
 Maine 80, Vermont 69
 Maine 67, Dartmouth 58
 Maine 76, Cheyney State 49
 Maine 56, Southern Maine 51
 Maine 57, Hartford 47
 Northeastern 71, Maine 55
 Holy Cross 81, Maine 68
 Central Connecticut 63, Maine 62
 Brown 73, Maine 62
 Maine 83, Colby 45
 Maine 71, Boston University 68
 New Hampshire 64, Maine 55
 Boston University 52, Maine 51
 Maine 53, New Hampshire 50

1986-87

Maine 77, Rhode Island 50
 Maine 82, Southern Maine 61
 Maine 80, Lehigh 53
 Maine 76, Siena 50
 Maine 77, Husson 42
 Maine 81, Harvard 56
 Maine 98, Springfield 51
 Maine 75, Middle Tennessee 67
 Maine 69, Central Connecticut 55
 Maine 91, Utica 57
 Maine 91, Colgate 65
 Maine 82, Central Connecticut 65
 Northeastern 66, Maine 62
 Maine 108, Maine-Presque Isle 29
 Maine 72, Vermont 58
 Maine 56, Vermont 55
 Maine 72, Boston University 70
 Maine 71, Cheyney State 44
 New Hampshire 61, Maine 52
 Maine 86, Hartford 66
 Maine 78, Hartford 69
 Maine 72, Northeastern 67
 Boston University 89, Maine 73
 Maine 82, New Hampshire 67
 Maine 89, Brooklyn 36
 Maine 79, Brooklyn 42
 Maine 76, Boston University 54
 Northeastern 55, Maine 48



Cathy Iaconeta holds the school record for three-point field goals made in a season.

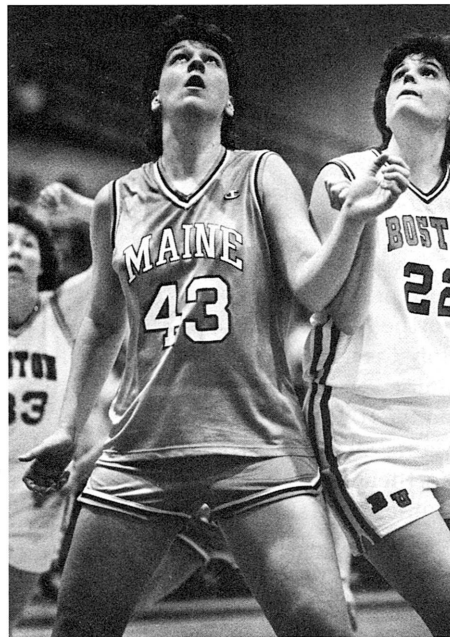


1987-88

Maine 79, Drexel 65
Maine 66, San Diego State 65
Providence 83, Maine 78
Southern California 83, Maine 63
Maine 97, Utica 56
Harvard 80, Maine 75
Maine 71, William & Mary 69
Maine 65, Tulane 57
Maine 92, Navy 55
Maine 89, Nebraska 82
Maine 92, Colgate 57
Maine 84, Colgate 58
Maine 76, Miami 56
Maine 75, Brooklyn 32
Maine 88, Brooklyn 50
Maine 52, Northeastern 42
Boston University 78, Maine 75
Maine 99, Central Connecticut 68
Maine 86, Vermont 50
Maine 84, Vermont 73
Maine 64, New Hampshire 63
Maine 73, Hartford 69
Maine 80, Hartford 67
Maine 2, Northeastern 0
Maine 64, Boston University 63
Maine 64, Central Connecticut 45
New Hampshire 60, Maine 56
Maine 82, New Hampshire 76
Boston University 66, Maine 62

1988-89

Maine 75, Finland 49
San Diego State 52, Maine 49
Maine 63, Eastern Washington 56
Maine 59, Syracuse 45
Michigan State 60, Maine 53
Virginia Commonwealth 70, Maine 64
Connecticut 80, Maine 56
Maine 89, Harvard 77
Georgia Tech 82, Maine 62
Maine 76, Massachusetts 62
Providence 85, Maine 69
Maine 56, Louisville 55
Maine 64, Brown 51
Maine 75, Brooklyn 38
Maine 75, Brooklyn 47
Northeastern 60, Maine 56
Maine 56, Boston University 43
Maine 71, Central Connecticut 69
Maine 66, Vermont 58
Maine 65, Vermont 48
Maine 65, New Hampshire 61
Maine 85, Hartford 80
Maine 84, Hartford 64
Maine 67, Northeastern 60
Maine 75, Boston University 55
Maine 77, Central Connecticut 54
Maine 69, New Hampshire 60
Northeastern 60, Maine 47



Rachel Bouchard is the all-time leading scorer at Maine with 2,409 career points.

1989-90

Maine 68, Siena 52
Maine 74, Wake Forest 56
Maine 75, Rutgers 67
NC State 77, Maine 66
Maine 84, Wagner 37
SE Louisiana 71, Maine 68
New Orleans 70, Maine 55
Maine 86, Delaware State 33
Maine 59, Harvard 55
Maine 83, Holy Cross 81
Maine 86, Stetson 78
Florida 78, Maine 73
Maine 77, Colgate 54
Maine 69, Northeastern 37
Maine 92, Vermont 66
Maine 69, Colgate 61
Maine 78, Hartford 30
Boston University 54, Maine 51
Maine 57, Central Michigan 54
Maine 60, Northeastern 42
Maine 70, New Hampshire 49
Maine 76, Vermont 66
Maine 72, New Hampshire 54
Maine 83, Hartford 47
Maine 70, Boston University 56
Maine 64, Vermont 54
Kentucky 76, Maine 66
Illinois State 85, Maine 80
Maine 68, Wyoming 48

1990-91

Maine 83, Cornell 36
Richmond 69, Maine 53
Vanderbilt 74, Maine 67
UNC-Charlotte 62, Maine 57
Maine 70, Rhode Island 48
Villanova 65, Maine 60
Maine 84, Drake 72
Tennessee 77, Maine 64
Maine 83, Dartmouth 45
Maine 63, Alabama-Birmingham 62
Maine 60, St. Peter's 57
Maine 72, New Hampshire 55
Maine 77, Boston University 49
Maine 62, Northeastern 42
Maine 66, Hartford 35
Maine 82, Vermont 55
Holy Cross 66, Maine 65
Maine 71, New Hampshire 53
Lamar 69, Maine 68
Maine 73, Boston University 52
Maine 103, Northeastern 50
Maine 91, Colgate 56
Maine 81, Siena 55
Maine 90, Hartford 39
Maine 107, Arkansas State 73
Vermont 74, Maine 65
Maine 79, Hartford 59
Maine 79, Vermont 64

1991-92

Tennessee 86, Maine 71
Wisconsin-Green Bay 58, Maine 57
South Carolina 56, Maine 53
Dartmouth 60, Maine 55
Maine 87, Cleveland St. 59
Fairfield 50, Maine 46
Maine 83, Holy Cross 71
Maine 52, St. Peter's 47
Maine 71, James Madison 54
St. Mary's (Cal.) 69, Maine 56
Maine 75, Canisius 72
Maine 90, Sacramento State 83
Maine 59, Hartford 54
Vermont 69, Maine 62
Maine 71, Colgate 42
Maine 61, Drexel 45
Maine 75, Delaware 59
Vermont 73, Maine 55
Maine 56, Hartford 53
Maine 74, Boston University 57
Maine 54, Northeastern 53
Maine 65, New Hampshire 55
Maine 57, Northeastern 53
Maine 83, Boston University 52
Maine 73, Delaware 54
Maine 71, Drexel, 54
Maine 68, Drexel 57
Maine 74, New Hampshire 65
Vermont 70, Maine 50



NORTH ATLANTIC CONFERENCE

The North Atlantic Conference has endured numerous transformations in its first decade, but the league enters its 14th year of existence with a strong foundation established and a bright look toward the future. The league enters 1992-93 with an eight-institution alignment: Boston University, Drexel University, Northeastern University and the Universities of Delaware, Hartford, Maine, New Hampshire and Vermont.

Founded in 1979 as the ECAC North, the league was comprised of 10 teams competing only in men's basketball for an automatic bid to the NCAA Division I Tournament. The 1987-88 season marked a turning point for the conference when the league administrators made a commitment to establish new championships, with the goal of building a broad-based athletic conference. Stuart P. Haskell, Jr. was named the league's first Commissioner on January 1, 1988.

League roots can be traced to the 1974 formation of the New England Conference in which the five charter members of the NAC were aligned. As new conferences were formed, the remaining institutions combined with Canisius, Colgate and Niagara to comprise the ECAC North for the 1979-80 season. The first league men's basketball tournament was held that year. In 1984, the league expanded with the addition of Siena and Hartford, and the name became the "ECAC North Atlantic Conference." Following the 1988-89 season, the league trimmed to seven institutions with the departure of Canisius, Niagara and Siena. The NAC became its own entity and was no longer under the auspices of the Eastern College Athletic Conference. Colgate was the final institution to depart from the conference following the 1989-90 season. Drexel and Delaware joined the NAC on a full-time basis for the 1991-92 year.

In only four years, the NAC has expanded to sponsor 20 championships. Men's teams compete in baseball, basketball, cross country, golf, indoor track and field, lacrosse, outdoor track and field, soccer, swimming and tennis.

The 1992-93 season will mark the fourth in which women's sports will be sponsored by the NAC. Women's teams enjoyed great success in the inaugural



Sophomore guard Seana Dionne dribbles past a defender.

season of league play. Three NAC field hockey teams were showcased in the NCAA Tournament and the women's basketball league champion, the University of Maine, participated in the NWIT Tournament. The NAC sponsors women's championships in basketball, cross country, field hockey, indoor track and field, outdoor track and field, swimming, soccer, softball, tennis and volleyball.

Men's and women's basketball teams compete in a double round robin regular season schedule, concluding with the annual post-season tournament. The men's champion receives the league's automatic bid to the NCAA Tournament. In 1991-92, Vermont represented the conference in the NCAA women's basketball tournament as an at-large selection.

NAC basketball teams are not the only ones to enjoy success in post-season tournaments. League teams have achieved success on all levels. Men's soccer in the NAC has moved steadily to the forefront in New England and now enjoys an automatic bid to the NCAA tournament. In the four years that the NAC has sponsored the sport, Boston University has advanced to the second round of the tournament in twice (1988, 1990), while Vermont went to the third round in 1989 and made the first round in 1990. Last season Hartford advanced to the third round, while BU went to the first round.

League teams have established a

tradition of post-season tournament participation in field hockey, another sport in which the NAC enjoys the automatic bid to NCAA post-season competition. In the first season of NAC field hockey play, three of the five league teams received berths in the NCAA Tournament. League champion New Hampshire was joined by Boston University and Northeastern in the 12-team field.

The NAC replaced the ECAC New England Division in baseball in 1990. Teams competed in round robin competition, with the NAC champion representing the league in the ECAC Division I post-season tournament. Maine has won the league title the first two years and has received a berth to the NCAA Northeast Regional Tournament both years. Last year Delaware won the ECAC tournament, advancing to the NCAA Regionals. This year the NAC will hold its own tournament.

In addition to building strong athletic programs, the member institutions are also committed toward establishing and maintaining the highest standards of academic excellence. The conference selects an all-academic honor roll in each of the round robin sports to recognize athletes who have excelled in the classroom, as well as on the field. Additionally, top Scholar-Athletes from each sport are recognized by the conference each year.



**GAME 1
vs. Boston College
December 1, 7 p.m.
Chestnut Hill, Mass.**

Location: Chestnut Hill, Mass. 02167
Founded: 1863
Enrollment: 9,167
President: J. Donald Monan, S.J.
Athletic Director: Chet Gladchuk
Nickname: Eagles
Colors: Maroon and Gold
Conference: Big East
Home Court (Capacity):
 Power Gym/Conte Forum (950/8,606)
Sports Information Contact:
 Betsy Thunberg
Office Phone: (617) 552-4508
Home Phone: (508) 754-1411
Press Row Phone: (617) 552-4508
Head Coach: Margo Plotzke
 (Eastern Michigan, '76)
Career Record: 167-161 (12 years)
Record at Boston College: Same
Coach's Phone: (617) 552-4530
Assistant Coaches: Felisha Legette
 Karen Pinkos
Letterwinners Ret./Lost: 6/2
Starters Ret./Lost: 4/1
1991-92 Record (Conference): 5-23 (3-16)
Series Record: First Meeting
Last Meeting: First Meeting



**Head Coach
Margo Plotzke**

**GAME 2
vs. Florida International
December 5, 2 p.m.
Orono**

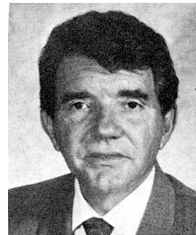
Location: Miami, Florida 33199
Founded: 1972
Enrollment: 23,000
President: Dr. Modesto Maidique
Athletic Director: Dr. Dick Young
Nickname: Golden Panthers
Colors: Blue and Yellow
Conference: Trans America Athletic
Home Court (Capacity):
 Golden Panther Arena (4,661)
Sports Information Contact:
 Ed Mills
Office Phone: (305) 348-2084
Home Phone: TBA
Press Row Phone: TBA
Head Coach: Cindy Russo
 (Old Dominion, '75)
Career Record: 290-134 (15 years)
Record at FIU: 250-112 (13 years)
Coach's Phone: (305) 348-3160
Assistant Coaches: Inge Nissen
 Geneva Morgan
Letterwinners Ret./Lost: 6/8
Starters Ret./Lost: 1/4
1991-92 Record (Conference): 23-10 (13-2)
Series Record: First meeting
Last Meeting: First meeting



**Head Coach
Cindy Russo**

**GAME 3
vs. Mississippi
December 6, 1 p.m.
Orono**

Location: University, Mississippi 38677
Founded: 1848
Enrollment: 11,033
Chancellor: Dr. Gerald Turner
Athletic Director: Warner Alford
Nickname: Lady Rebels
Colors: Cardinal Red and Navy Blue
Conference: Southeastern
Home Court (Capacity):
 Tad Smith Coliseum (8,135)
Sports Information Contact:
 Bonnie Bishop
Office Phone: (601) 232-7522
Home Phone: (601) 234-0113
Press Row Phone: (601) 236-1931
Head Coach: Van Chancellor
 (Mississippi State, '65)
Career Record: 341-105 (14 years)
Record at Mississippi: Same
Coach's Phone: (601) 232-7241
Assistant Coaches: Steve Curtis
 Peggie Gillom
 Michelle Anderson
Letterwinners Ret./Lost: 8/5
Starters Ret./Lost: 2/3
1991-92 Record (Conference): 29-3 (11-0)
Series Record: First Meeting
Last Meeting: First Meeting



**Head Coach
Van Chancellor**

**GAME 4
vs. St. Peter's
December 9, 7 p.m.
Jersey City, N.J.**

Location: Jersey City, New Jersey 07306
Founded: 1872
Enrollment: 3,356
President: Rev. Daniel A. Degnan, S.J.
Athletic Director: William A. Stein
Nickname: Peahens
Colors: Blue and White
Conference: Metro Atlantic Athletic
Home Court (Capacity):
 Yanitelli Center (3,200)
Sports Information Contact:
 Tim Camp
Office Phone: (201) 915-9101
Home Phone: (201) 451-1043
Press Row Phone: (201) 915-9101
Head Coach: Mike Granelli
 (Mount St. Mary's, '61)
Career Record: 371-136 (20 years)
Record at St. Peter's: Same
Coach's Phone: (201) 915-9118
Assistant Coaches: Bill McKeever
 Bob Tolh
 Tom Gementgis
Letterwinners Ret./Lost: 10/2
Starters Ret./Lost: 3/2
1991-92 Record (Conference): 24-7 (13-3)
Series Record: Maine leads 2-0
Last Meeting: Maine, 52-47 (1991-92)



**Head Coach
Mike Granelli**



**GAME 5
vs. Rhode Island
December 12, 1 p.m.
Portland**

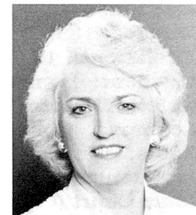
Location: Kingston, R.I. 02881
Founded: 1892
Enrollment: 12,500
President: Dr. Robert L. Carothers
Athletic Director: Ronald Petro
Nickname: WRams
Colors: Blue and White
Conference: Atlantic 10
Home Court (Capacity):
 Keaney Gymnasium (5,000)
Sports Information Contact:
 Dawn Wright
Office Phone: (401) 792-5356
Home Phone: (401) 295-8348
Press Row Phone: (401) 792-5359
Head Coach: Linda Ziemke
 (West Chester State College, '73)
Career Record: 150-184 (13 years)
Record at URI: 20-65 (3 years)
Coach's Phone: (401) 792-5235
Assistant Coaches: Jody Thornton
 Jen Vaughn, G.A.
Letterwinners Ret./Lost: 8/1
Starters Ret./Lost: 4/1
1991-92 Record (Conference): 8-20 (4-12)
Series Record: URI leads, 8-5
Last Meeting vs. Maine: Maine, 70-48 (1990-91)



**Head Coach
Linda Ziemke**

**GAME 6
vs. Rutgers
December 27, TBA
Bell Atlantic Holiday Classic
Piscataway, N.J.**

Location: New Brunswick, N.J.
Founded: 1766
Enrollment: 23,000
President: Dr. Francis L. Lawrence
Athletic Director: Frederick E. Gruninger
Nickname: Lady Knights
Colors: Scarlet
Conference: Atlantic 10
Home Court (Capacity):
 Louis Brown Athletic Center (9,000)
Sports Information Contact:
 Maureen Coyle
Office Phone: (908) 932-4200
Home Phone: (908) 257-6176
Press Row Phone: (908) 932-4200
Head Coach: Theresa Greutz
 (Immaculata College, '74)
Career Record: 400-125 (18 years)
Record at Rutgers: 373-120 (16 years)
Coach's Phone: (908) 932-4251
Assistant Coaches: Kathleen Shank
 Gay Hemphill
Letterwinners Ret./Lost: 10/3
Starters Ret./Lost: 3/2
1991-92 Record (Conference): 21-11 (11-5)
Series Record: First Meeting
Last Meeting: First Meeting



**Head Coach
Theresa Greutz**

**GAME 7 Possible Opponent
vs. Clemson
December 29, TBA
Bell Atlantic Holiday Classic
Piscataway, N.J.**

Location: Clemson, S.C. 29633
Founded: 1889
Enrollment: 17,295
President: Dr. Max Lennon
Athletic Director: Bobby Robinson
Nickname: Lady Tigers
Colors: Orange and Purple
Conference: Atlantic Coast
Home Court (Capacity):
 Littlejohn Coliseum (11,020)
Sports Information Contact:
 Sam Blackman
Office Phone: (803) 656-2114
Home Phone: (803) 654-4136
Press Row Phone: (803) 654-3326
Head Coach: Jim Davis
 (Tennessee Wesleyan, '70)
Career Record: 125-59 (6 years)
Record at Clemson: 106-51 (5 years)
Coach's Phone: (803) 656-2101 ext. 251
Assistant Coaches: Carey Green
 Michelle Nelson, G.A.
Letterwinners Ret./Lost: 7/6
Starters Ret./Lost: 3/2
1991-92 Record (Conference): 21-10 (9-7)
Series Record: First Meeting
Last Meeting: First Meeting



**Head Coach
Jim Davis**

**GAME 7 Possible Opponent
vs. Texas
December 29, TBA
Bell Atlantic Holiday Classic
Piscataway, N.J.**

Location: Austin, Tx. 78712
Founded: 1883
Enrollment: 49,618
President: William Livingston
Athletic Director: Jody Conratt
Nickname: Lady Longhorns
Colors: Burnt Orange and White
Conference: Southwest
Home Court (Capacity):
 Erwin Center (16,231)
Sports Information Contact:
 Kim Stone
Office Phone: (512) 471-7693
Home Phone: (512) 327-9417
Press Row Phone: (512) 471-4642
Head Coach: Jody Conratt
 (Baylor, '63)
Career Record: 598-145 (23 years)
Record at Texas: 481-83 (16 years)
Coach's Phone: (512) 471-7693
Assistant Coaches: Kathy Harston
 Jennifer White
Letterwinners Ret./Lost: 10/3
Starters Ret./Lost: 4/1
1991-92 Record (Conference): 21-10 (11-3)
Series Record: First Meeting
Last Meeting: First Meeting



**Head Coach
Jody Conratt**



**GAME 8
vs. Central Michigan
January 2, 8 p.m.
Comfort Inn Chippewa Classic
Mt. Pleasant, Michigan**

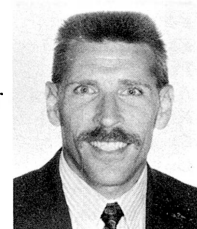
Location: Mt. Pleasant, Michigan 48859
Founded: 1892
Enrollment: 16,593
President: Leonard Plachta
Athletic Director: Marcy Weston
Nickname: Chippewas
Colors: Maroon and Gold
Conference: Mid-American
Home Court (Capacity):
 Rose Arena (6,000)
Sports Information Contact:
 Tim Nott
Office Phone: (517) 774-3277
Home Phone: (517) 774-6877
Press Row Phone: (517) 774-3579
Head Coach: Donita Davenport
 (Kansas State, '72)
Career Record: 132-97 (8 years)
Record at CMU: Same
Coach's Phone: (517) 774-6675
Assistant Coach: Betsy Yonkman
Letterwinners Ret./Lost: 10/0
Starters Ret./Lost: 5/0
1991-92 Record (Conference): 16-12 (9-7)
Series Record: Maine leads 1-0
Last Meeting: Maine, 57-54 (1989-90)



**Head Coach
Donita Davenport**

**GAME 9 Possible Opponent
vs. Valparaiso
January 3, 6/8 p.m.
Comfort Inn Chippewa Classic
Mt. Pleasant, Michigan**

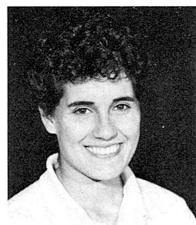
Location: Valparaiso, Ind. 46383
Founded: 1859
Enrollment: 3,800
President: Dr. Alan Harre
Athletic Director: Dr. William Steinbrecher
Nickname: Lady Crusaders
Colors: Brown and Gold
Conference: Mid-Continent
Home Court (Capacity):
 Athletics-Recreation Center (4,500)
Sports Information Contact:
 Ken Nester
Office Phone: (219) 464-5232
Home Phone: (219) 464-3791
Press Row Phone: (219) 464-5492
Head Coach: Dave Wolter
 (Concordia (Nebraska), '76)
Career Record: 61-82 (5 years)
Record at Valparaiso: Same
Coach's Phone: (219) 464-5238
Assistant Coach: Kim Rockey
Letterwinners Ret./Lost: 7/6
Starters Ret./Lost: 2/3
1991-92 Record (Conference): 20-9 (8-4)
Series Record: First Meeting
Last Meeting: First Meeting



**Head Coach
Dave Wolter**

**GAME 9 Possible Opponent
vs. Siena
January 3, 6/8 p.m.
Comfort Inn Chippewa Clasic
Mt. Pleasant, Michigan**

Location: Loudonville, N.Y. 12211
Founded: 1937
Enrollment: 2,700
President: Fr. William Mcconville, OFM
Athletic Director: John D'Argenio
Nickname: Saints
Colors: Green and Gold
Conference: Mid-Atlantic Athletic
Home Court (Capacity):
 Alumni Recreation Center (4,000)
Sports Information Contact:
 Meg Culhane
Office Phone: (518) 783-2411
Home Phone: (518) 272-2992
Press Row Phone: (518) 783-2411
Head Coach: Gina Castelli
 (Canisius, '86)
Career Record: 32-24 (2 years)
Record at Siena: Same
Coach's Phone: (518) 783-2484
Assistant Coaches: Andrea Woodbury
 Val Higgins
Letterwinners Ret./Lost: 8/2
Starters Ret./Lost: 3/2
1991-92 Record (Conference): 11-7 (7-9)
Series Record: Maine leads, 4-1
Last Meeting: Maine, 81-55 (1990-91)



**Head Coach
Gina Castelli**

**GAME 14
vs. Dartmouth College
January 26, 7:30 p.m.
Orono**

Location: Hanover, N.H. 03755
Founded: 1769
Enrollment: 4,000
President: James O. Freedman
Athletic Director: Dick Jaeger
Nickname: Big Green
Colors: Green and White
Conference: Ivy League
Home Court (Capacity):
 Leede Arena (2,100)
Sports Information Contact:
 Steve Sheridan
Office Phone: (603) 646-2468
Home Phone: (603) 643-6438
Press Row Phone: (603) 646-2468
Head Coach: Jacqueline Hullah
 (California-Fullerton, '78)
Career Record: 130-77 (8 years)
Record at Dartmouth: Same
Coach's Phone: (603) 646-3194
Assistant Coaches: Sue Darling
 Leah Spraragen
Letterwinners Ret./Lost: 8/1
Starters Ret./Lost: 5/0
1991-92 Record (Conference): 16-10 (9-5)
Series Record: Maine leads, 4-1
Last Meeting: Dartmouth, 60-55 (1991-92)



**Head Coach
Jacqueline Hullah**



GAME 17
vs. Central Connecticut
February 4, 6 p.m.
New Britain, Connecticut

Location: New Britain, Ct. 06050
Founded: 1849
Enrollment: 14,000
President: Dr. John Shumaker
Athletic Director: Dr. Judith Davidson
Nickname: Blue Devils
Colors: Blue and White
Conference: East Coast
Home Court (Capacity):
 Detrick Gymnasium (4,000)
Sports Information Contact:
 Kathy Pulek
Office Phone: (203) 827-7824
Home Phone: (203) 667-2193
Press Row Phone: (203) 827-7466
Head Coach: Dr. Brenda Reilly
 (Cal State at Los Angeles, '69)
Career Record: 293-258 (22 years)
Record at CCSU: 219-230 (20 years)
Coach's Phone: (203) 827-7364
Assistant Coach: Duffy Burns
Letterwinners Ret./Lost: 10/0
Starters Ret./Lost: 5/0
1991-92 Record (Conference): 7-22 (4-8)
Series Record: Maine leads, 9-2
Last Meeting: Maine, 77-54 (1989-90)



Head Coach
Dr. Brenda Reilly

North Atlantic Conference
Composite Schedule

JANUARY

- 14 Hartford at Boston University
 Vermont at Northeastern
- 15 Drexel at Maine**
 Delaware at New Hampshire
- 16 Northeastern at Hartford
 Vermont at Boston University
- 17 Delaware at Maine**
 Drexel at New Hampshire
- 21 Maine at Vermont**
 New Hampshire at Hartford
- 22 Boston University at Delaware
 Northeastern at Drexel
- 23 Hartford at Maine**
 Vermont at New Hampshire
- 24 Boston University at Drexel
 Northeastern at Delaware
- 28 Maine at Boston University**
 New Hampshire at Northeastern
- 29 Delaware at Vermont
 Drexel at Hartford
- 30 Maine at Northeastern**
 Boston University at New Hampshire
- 31 Delaware at Hartford
 Drexel at Vermont

FEBRUARY

- 6 Boston University at Northeastern
 Delaware at Drexel
 Hartford at Vermont
- 7 New Hampshire at Maine**
- 11 Northeastern at Maine**
 New Hampshire at Boston University
- 12 Hartford at Delaware
 Vermont at Drexel
- 13 Boston University at Maine**
 Northeastern at New Hampshire
- 14 Hartford at Drexel
 Vermont at Delaware
- 18 Maine at Hartford**
 New Hampshire at Vermont
- 19 Drexel at Boston University
 Delaware at Northeastern
- 20 Vermont at Maine**
 Hartford at New Hampshire
- 21 Delaware at Boston University
 Drexel at Northeastern
- 25 Boston University at Hartford
 Northeastern at Vermont
- 26 Maine at Delaware**
 New Hampshire at Drexel
- 27 Boston University at Vermont
 Hartford at Northeastern
- 28 Maine at Drexel**
 New Hampshire at Delaware

MARCH

- 3 Drexel at Delaware
- 6 Maine at New Hampshire**
 Northeastern at Boston University
 Vermont at Hartford

NAC TOURNAMENT

- 9 NAC Quarterfinals at Higher Seeds
- 12 NAC Semi-finals at Top Remaining Seed
- 13 NAC Championship at site of semis

GAME 23
vs. Maryland-Eastern Shore
February 24, 7:30 p.m.
Orono

Location: Princess Anne, Md. 21853
Founded: 1886
Enrollment: 2,500
President: Dr. William P. Hychte
Athletic Director: Dr. Hallie E. Gregory
Nickname: Fighting Hawks
Colors: Maroon and Gray
Conference: Mid-Eastern Athletic
Home Court (Capacity):
 Cappy Anderson Stadium (2,500)
Sports Information Contact:
 Sheila I. Benton
Office Phone: (410) 651-6499
Home Phone: (410) 860-8961
Press Row Phone: (410) 651-6499
Head Coach: Willie Simon
 (Allen, '57)
Career Record: 351-133 (17 years)
Record at UMES: 45-39 (4 years)
Coach's Phone: (410) 651-6537
Assistant Coaches: Lisa Jones
Letterwinners Ret./Lost: 4/7
Starters Ret./Lost: 2/3
1991-92 Record (Conference): 17-10 (12-4)
Series Record: First Meeting
Last Meeting: First Meeting



Head Coach
Willie Simon



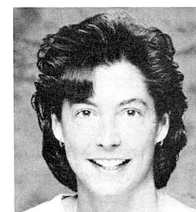
Meet The North Atlantic Conference Opponents

NAC

NORTH ATLANTIC CONFERENCE

GAMES 10 and 25 vs. Drexel January 17, 7:30 p.m. @ Orono February 26, 1 p.m. @ Philadelphia, Pa.

Location: Philadelphia, Pa. 19104
Founded: 1891
Enrollment: 6,191
President: Dr. Richard D. Breslin
Athletic Director: Barbara Kilgour
Nickname: Lady Dragons
Colors: Navy Blue and Gold
Conference: North Atlantic
Home Court (Capacity): Physical Education Athletic Center (2,500)
Sports Information Contact: Jan Giel
Office Phone: (215) 590-8951
Home Phone: (215) 660-9727
Press Row Phone: (215) 590-8935
Head Coach: Kristen Foley (Rutgers, '87)
Career Record: First Year
Record at Drexel: First Year
Coach's Phone: (215) 590-8620
Assistant Coaches: Kim Foley
 Megan Keating
Letterwinners Ret./Lost: 10/1
Starters Ret./Lost: 4/1
1991-92 Record (Conference): 8-20 (3-11)
Series Record: Maine leads, 5-0
Last Meeting: Maine 68-57, 1992 NAC Tournament



**Head Coach
Kristen Foley**

GAMES 11 and 24 vs. Delaware January 17, 1 p.m. @ Orono February 26, 7 p.m. @ Newark, Del.

Location: Newark, Del. 19716
Founded: 1833 as New Ark College
Enrollment: 14,546
President: Dr. David P. Roselle
Athletic Director: Edgar N. Johnson
Nickname: Fightin' Blue Hens
Colors: Royal Blue and Gold
Conference: North Atlantic
Home Court (Capacity): Bob Carpenter Center (5,058)
Sports Information Contact: Scott Selheimer
Office Phone: (302) 451-2186
Home Phone: (302) 323-9769
Press Row Phone: (302) 451-2168
Head Coach: Joyce Perry (Delaware, '73)
Career Record: 269-177 (19 years)
Record at Delaware: 216-153 (14 years)
Coach's Phone: (302) 451-8663
Assistant Coaches: Sue Manelski
 Keila Whittington, G.A.
Letterwinners Ret./Lost: 7/3
Starters Ret./Lost: 4/1
1991-92 Record (Conference): 15-14 (7-7)
Series Record: Maine leads, 2-0
Last Meeting: Maine, 73-54 (1991-92)



**Head Coach
Joyce Perry**

GAMES 12 and 22 vs. Vermont January 21, 7:30 p.m. @ Burlington, Vt. February 20, 2 p.m. @ Orono

Location: Burlington, Vt. 05401
Founded: 1791
Enrollment: 8,000
President: Thomas P. Salmon (Interim)
Athletic Director: Richard A. Farnham
Nickname: Catamounts
Colors: Green and Gold
Conference: North Atlantic
Home Court (Capacity): Roy L. Patrick Gymnasium (3,200)
Sports Information Contact: Gordon Woodworth
Office Phone: (802) 656-1110
Home Phone: (802) 860-1789
Press Row Phone: (802) 864-6114
Head Coach: Cathy Ingles (Southern Connecticut, '80)
Career Record: 92-73 (6 years)
Record at Vermont: Same
Coach's Phone: (802) 656-7695
Assistant Coaches: Pam Borton
 Keith Cieplicki
Letterwinners Ret./Lost: 9/3
Starters Ret./Lost: 3/2
1991-92 Record (Conference): 29-1 (14-0)
Series Record: Maine leads, 24-9
Last Meeting: Vermont, 70-50 (1992 NAC Championship)



**Head Coach
Cathy Ingles**



**GAMES 13 and 21
vs. Hartford
January 23, 2 p.m. @ Orono
February 18, 7:30 p.m. @ Hartford, Conn.**

Location: West Hartford, Conn. 06117
Founded: 1877
Enrollment: 4,130
President: Humphrey Tonkin
Athletic Director: Denise Cohen (Interim)
Nickname: Lady Hawks
Colors: Scarlet and White
Conference: North Atlantic
Home Court (Capacity):
 Sports Center (4,475)
Sports Information Contact:
 Andy Bean
Office Phone: (203) 768-4501
Home Phone: (203) 224-9556
Press Row Phone: (203) 768-5042
Head Coach: Allison Jones
 (St. John's, '81)
Career Record: 74-17 (3 years)
Record at Hartford: First Year
Coach's Phone: (203) 768-5035
Assistant Coaches: Kim Foss
 Christine Michalopoulos
Letterwinners Ret./Lost: 8/4
Starters Ret./Lost: 4/1
1991-92 Record (Conference): 9-19 (2-12)
Series Record: Maine leads, 15-0
Last Meeting: Maine, 56-53 (1991-92)



**Head Coach
Allison Jones**

**GAME 15 and 20
vs. Boston University
January 28, 7:30 p.m. Boston, Mass.
February 13, 2 p.m. Orono**

Location: Boston, Mass. 02215
Founded: 1839
Enrollment: 13,663
President: Dr. John Silber
Athletic Director: Gary Strickler
Nickname: Terriers
Colors: Scarlet and White
Conference: North Atlantic
Home Court (Capacity):
 Case Gym (2,500)
Sports Information Contact:
 Dave Sullivan
Office Phone: (617) 353-2872
Home Phone: (617) 235-2744
Press Row Phone: N/A
Head Coach: Chris Basile
 (University of Massachusetts, '77)
Career Record: 137-114 (10 years)
Record at BU: Same
Coach's Phone: (617) 353-4669
Assistant Coaches: Maureen McCormack
 Deborah Adams
Letterwinners Ret./Lost: 10/4
Starters Ret./Lost: 4/1
1991-92 Record (Conference): 12-16 (6-8)
Series Record: Maine leads, 15-10
Last Meeting: Maine, 83-52 (1991-92)



**Head Coach
Chris Basile**

**GAMES 16 and 19
vs. Northeastern
January 30, 2 p.m. @ Boston, Mass.
February 11, 7:30 @ Orono**

Location: Boston, Mass. 02115
Founded: 1898
Enrollment: 12,500
President: Dr. John A. Curry
Athletic Director: Irwin M. Cohen
Nickname: Huskies
Colors: Red and Black
Conference: North Atlantic
Home Court (Capacity):
 Cabot Gym (3,000)
Sports Information Contact:
 Jason Lefferts
Office Phone: (617) 437-2691
Home Phone: (617) 445-1872
Press Row Phone: N/A
Head Coach: Joy Malchodi
 (Ithaca, '70)
Career Record: 219-224 (16 years)
Record at NU: 160-170 (12 years)
Coach's Phone: (617) 437-2702
Assistant Coaches: Lauree Gott
 Crystal Houston
Letterwinners Ret./Lost: 7/5
Starters Ret./Lost: 3/2
1991-92 Record (Conference): 9-19 (3-11)
Series Record: Northeastern leads, 12-11
Last Meeting: Maine, 57-53 (1991-92)



**Head Coach
Joy Malchodi**

**GAMES 18 and 26
vs. New Hampshire
February 7, 2 p.m. @ Orono
March 6, 1 p.m. @ Durham, N.H.**

Location: Durham, N.H. 03824
Founded: 1866
Enrollment: 11,000
President: Dale Nitzschke
Athletic Director: Dr. Judith L. Ray
Nickname: Wildcats
Colors: Blue and White
Conference: North Atlantic
Home Court (Capacity):
 Lundholm Gym (3,500)
Sports Information Contact:
 Lisa Markley
Office Phone: (603) 862-3835
Home Phone: (207) 748-3018
Press Row Phone: (603) 862-3181
Head Coach: Kathy Sanborn
 (New Hampshire, '79)
Career Record: 177-110 (12 years)
Record at UNH: 88-72 (6 years)
Coach's Phone: (603) 862-3831
Assistant Coaches: Rose Peeples
 Mike Caron
Letterwinners Ret./Lost: 11/1
Starters Ret./Lost: 4/1
1991-92 Record (Conference): 18-8 (10-5)
Series Record: Maine leads, 17-11
Last Meeting: Maine 74-65, 1992 NAC
 Tournament



**Head Coach
Kathy Sanborn**



Alfond Sports Arena

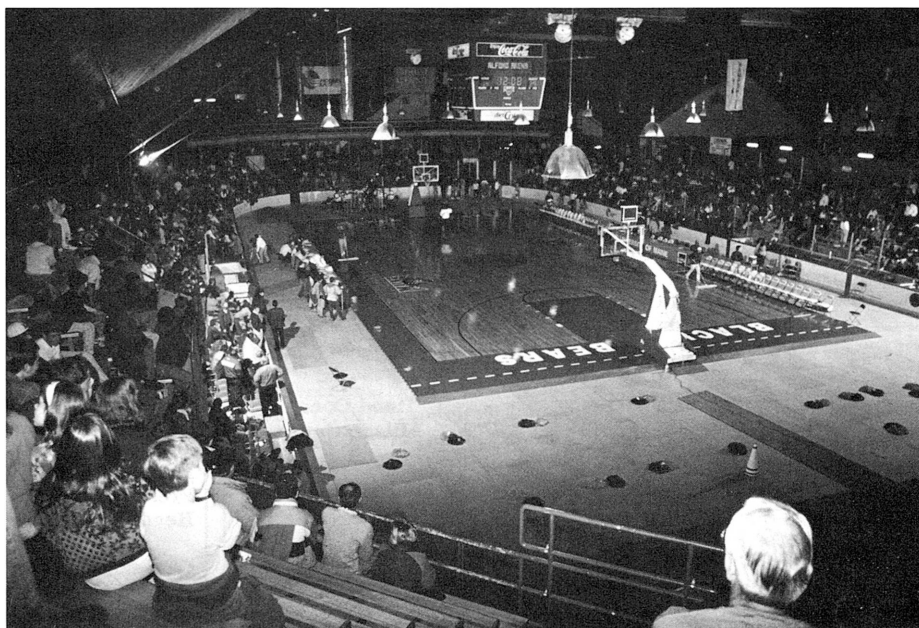
The Harold Alfond Sports Arena, one of the finest all-purpose facilities in the northeast, was completed in February of 1977. Thanks to the generosity of Mr. Harold Alfond, the Arena allows basketball to return to campus in a modern, up-graded facility.

The Black Bears have played in front of crowds packed into Memorial Gymnasium on the Orono campus. Maine spectatorship enabled the Black Bear home court to be noted in *Sports Illustrated* as one of the top 10 most difficult gyms to play in, in the seventies.

Mr. Alfond, who has contributed over \$4 million dollars to the University since 1968, donated \$2 million dollars for the expansion. Mr. Alfond's gift represents the largest one-time (non-posthumous) cash contribution ever bestowed upon the University. Over 2,000 people, headed by Mr. Alfond donated funds for the original construction the complex.

The expansion created 70-foot by 140-foot additions to the east and west sides of the Arena allowing for the installation of 1,200 seats. The construction raises the capacity to 5,200 for hockey and 6,000 for basketball.

Included in the Arena expansion are additional concession areas and rest rooms, locker rooms, ticket offices, souvenir stands and improved media facilities. A storage area will also be built for the new basketball court to be used



The Alfond Arena expansion brings basketball back to campus.

in the building.

Aside from being Maine's home court, the Arena is used by high school and youth hockey leagues, and for concerts and graduation ceremonies.

The complex is a modern facility with virtually no obstructed-view seats in the building and an excellent view of the court.

The following services are offered at Alfond Arena:

Public Telephones: Pay phones are located in the lobby of the arena.

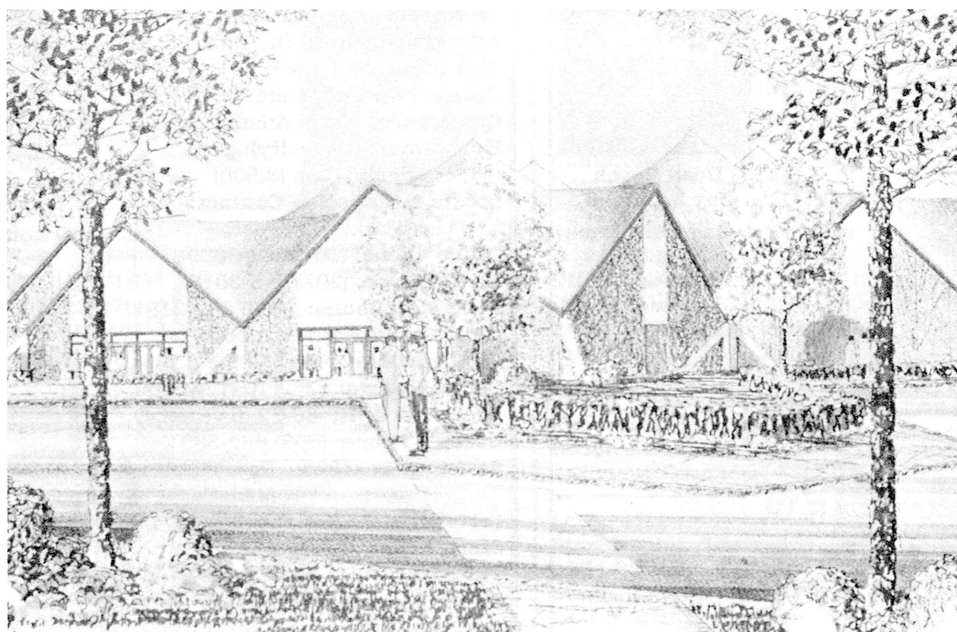
Concession stands: Located at both

the east and west sides of the arena.

Rest Rooms: Located underneath the east and west side bleachers.

Public Address: Announcements under emergency situations may be made. To make an emergency announcement report to the press row area. We regret that announcements of a personal nature will not be made.

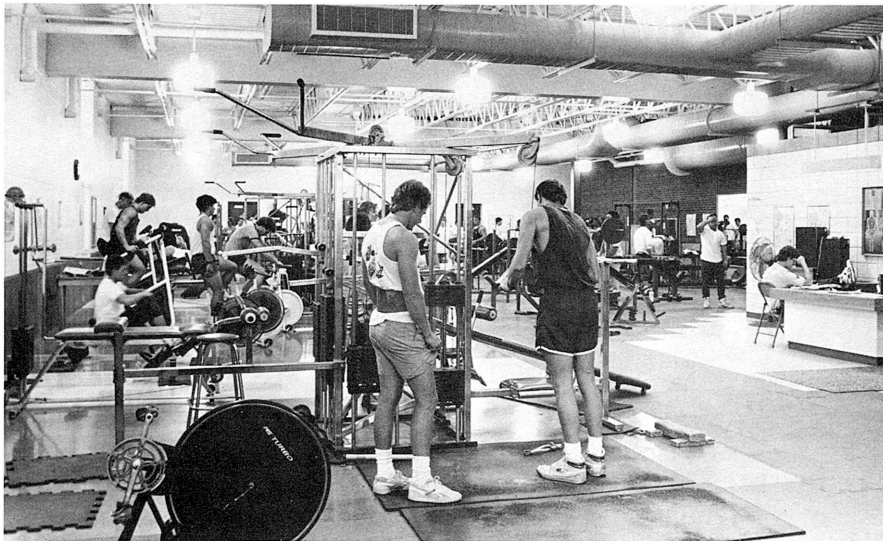
First Aid: Medical attendants are present at each game and can be found at the south end of the arena.



The Arena will house events such as concerts and graduations.



The Facilities



The Michael B. and Georgia D. Latti Fitness Center.

A modern training facility to service the University community was completed in June of 1990. The new facility is more than double the size of the old facility. The 1,800-foot room also features top equipment to serve the 200 recreational and varsity athletes who use the facility each day. The wet area of the room includes a freezer with ice making capabilities and three whirlpools. The facility also houses seven plinths and a taping area for 30 athletes.

The University employs three full-time trainers to assist with athletic coverage. Approximately 15 student-trainers also help in the coverage of practices and home events.



The Michael Kessock Sports Medicine Center.



The Edith Ness Women's Basketball Suite.

Completion of the \$1.2 million Memorial Gymnasium Renovation and Addition Project has given the University of Maine some of the finest athletic facilities in the Northeast.

The Michael B. and Georgia D. Latti Fitness Center was dedicated at a ceremony on October 6, 1989. The 6,000-foot facility next to Wallace Pool contains a weight room and training facility which serves an estimated 500 students, faculty and members of the surrounding community each day. The skylighted facility is home to tons of free weights, a Universal gym, life cycles and other exercise equipment.

The women's basketball team also received new lockerroom facilities as part of the expansion project.

The Edith Ness Women's Basketball Suite was made possible by the generous donation of Mrs. Edith Talbot Ness, class of 1932, a loyal fan and dedicated alumna who is devoted to excellence at the University of Maine.

The locker room contains 20 oak box-style lockers with upper compartments in which valuables and equipment may be stored. There is also a shower room and bathroom area.

The plush carpeting and attractive architecture make this a premier locker room facility.



Black Bear Primary Media

NEWSPAPERS

John Nash

Sports Department
Bangor Daily News
491 Maine Street
Bangor, ME 04401
(207) 990-8238 (office)
(207) 990-8092 (home)

Chad Finn

Maine Campus
University of Maine
5743 Lord Hall
Orono, ME 04469-5743
(207) 581-1268 (office)
(207) 581-1275 (fax)

Mike Lowe

Sports Department
Portland Press Herald
P.O. Box 1460
Portland, ME 04104
(207) 780-9000 (office)
(207) 780-7334 (fax)

Nate Dow

Sports Editor
Lewiston Sun
104 Park Street
Lewiston, ME 04240
(207) 784-5411 (office)
(207) 784-5955 (fax)

Joe Burriss

Sports Department
Boston Globe
135 Morrissey Blvd.
Boston, MA 02107
(617) 929-3235 (office)
(617) 929-2670 (fax)

Bob Sales

Sports Editor
Boston Herald
One Herald Square
Boston, MA 02106
(617) 426-3000
(617) 542-1314 (fax)

RADIO/ TELEVISION

Tim Throckmorton

Sports Director
WABI-TV
35 Hildreth Street
Bangor, ME 04401
(207) 947-8325 (office)
(207) 941-9378 (fax)

Dale Duff

Sports Director
WLBZ-TV
P.O. Box 415
Bangor, ME 04402
(207) 942-4821 (office)
(207) 942-2109 (fax)

Ron Lisnet

Sports Director
WVII-TV
371 Target Indus. Cir.
Bangor, ME 04401
(207) 945-6457 (office)
(207) 942-0511 (fax)

WMEB-FM

University of Maine
5725 East Annex
Orono, ME 04469-5725
(207) 581-2336 (office)

Tom Caron

Sports Director
WGME-TV
Northport Plaza
Portland, ME 04104
(207) 797-9099 (office)
(207) 878-3505 (fax)

Steve Minich

Sports Director
WMTW-TV
Poland Springs, ME
04210
(207) 782-5959 (office)
(207) 782-2165 (fax)

Howard Green

WPXT-TV
2320 Congress St.
Portland, ME 04102
(207) 774-0051 (office)
(207) 761-9794 (fax)

Bill Green

WCSH-TV
1 Congress Square
Portland, ME 04101
(207) 828-6666 (office)
(207) 828-6630 (fax)

Paul Doughty

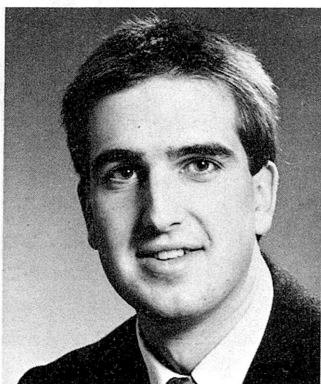
Sports Department
WCSH-TV
P.O. Box 4050A
Portland, ME 04104

Hub Burton

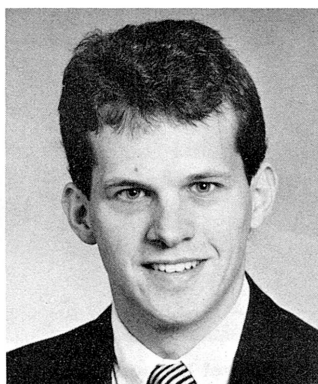
UMaine Public Affairs
5761 Public Affairs
Building
Orono, ME 04469-5761
(207) 581-3770

Chuck Reilly

Maine Talk Radio
861 Broadway
Bangor, ME 04401
(207) 942-4656



MATT BOURQUE
Sports Information
Director



JOE ROBERTS
Assistant Sports
Information Director



BECKY GIBBS
Women's Basketball
Sports Information Director

Information for the Media

The University of Maine Sports Information Staff extends a cordial welcome to all working media covering our home games. We appreciate the coverage you give us, and we will do everything possible to assist you in your game duties. In order to create the best possible situation, please observe the following:

CREDENTIALS: All credential requests should be directed the Sports Information Office, 5747 Memorial Gym, University of Maine, Orono, Me. 04469 (207) 581-1055. Credentials to be mailed should be requested

at least two weeks in advance. All other credentials can be picked up at the will-call booth at the main entrance of the Alfred Arena.

INTERVIEWS: All requests for interviews, either in person or via phone, must be approved by the Maine Sports Information office, and should be directed through the Sports Information Director. Post-game interviews will be conducted 10-minutes after the game, immediately outside the lockerrooms.

RADIO POLICY: Permission to broadcast may be obtained by calling the Maine Sports Information office. One phone line, for a rental fee of \$75, will be available for the visiting school. Other lines may be obtained by calling the Sports Information Office. All calls on these lines should be collect or billable to the user.

PRESS PARKING: A section of VIP parking has been reserved for members of the media.

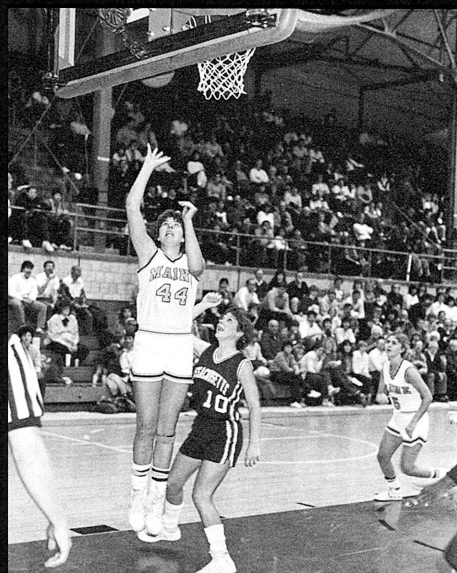


1,000 Point Club



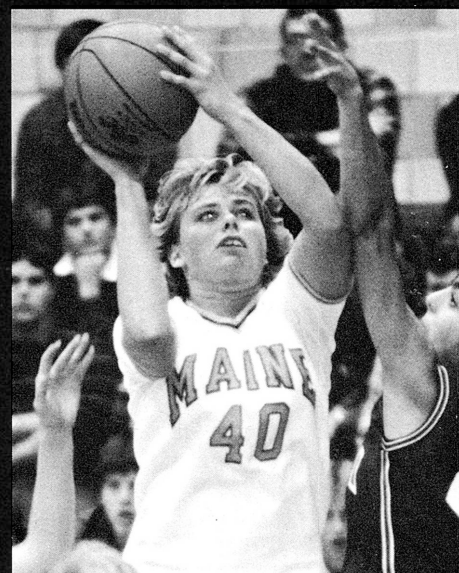
RACHEL BOUCHARD - 1987-91

Year	FG/FGA	FT/FTA	REB	PTS	PPG
87-88	176/365	128/193	321	543	20.1
88-89	212/405	167/240	378	591	21.9
89-90	263/480	198/287	325	724	25.0
90-91	224/368	162/216	275	610	23.5
Totals	875/1618	655/936	1299	2468	22.4



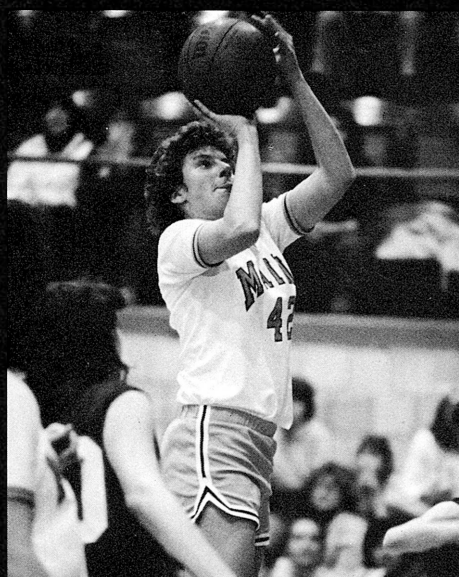
LIZ COFFIN - 1984-88

Year	FG/FGA	FT/FTA	REB	PTS	PPG
84-85	181/434	92/202	380	454	15.1
85-86	222/496	145/181	312	589	20.3
86-87	208/448	151/190	376	543	20.3
87-88	185/401	173/196	283	543	20.1
Totals	796/1779	561/769	1351	2153	18.9



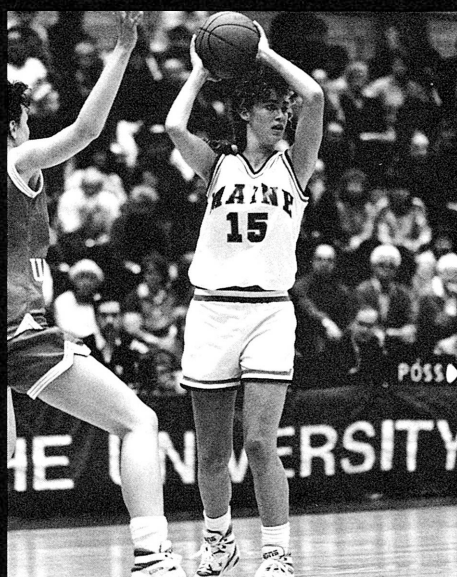
EMILY ELLIS - 1981-85

Year	FG/FGA	FT/FTA	REB	PTS	PPG
81-82	87/207	50/82	115	212	9.6
82-83	113/280	63/89	135	289	10.7
83-84	199/375	139/185	167	537	22.4
84-85	223/440	141/202	206	587	19.6
Totals	622/1302	393/558	623	1625	15.8



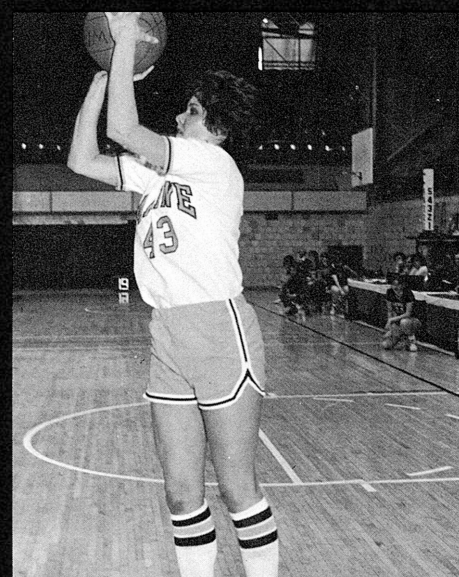
LAAREE GOTT - 1982-87

Year	FG/FGA	FT/FTA	REB	PTS	PPG
82-83	74/197	57/88	221	211	7.5
84-85	106/195	49/65	130	261	8.7
85-86	182/363	69/103	211	433	14.9
86-87	192/364	104/138	219	488	17.4
Totals	554/1119	279/394	781	1393	12.1



TRACEY FRENETTE - 1988-92

Year	FG/FGA	FT/FTA	REB	PTS	PPG
88-89	85/199	53/96	149	233	8.3
89-90	113/252	58/84	166	284	9.5
90-91	121/265	45/70	158	287	10.3
91-92	155/325	80/117	165	390	13.4
Totals	474/1041	236/367	638	1194	10.4



LISA CORMIER - 1980-84

Year	FG/FGA	FT/FTA	REB	PTS	PPG
80-81	93/174	8/11	51	179	7.8
81-82	105/217	26/38	98	219	10.0
82-83	128/313	31/35	143	291	10.4
83-84	165/363	33/40	100	363	22.4
Totals	491/1067	98/124	392	1052	10.8

University Of Maine Women's Basketball



1992-93 Basketball Schedule

<u>Day</u>	<u>Date</u>	<u>Opponent</u>	<u>Site</u>	<u>Time</u>
Friday	Nov. 20	Riverside (Club) of N.Y. City	Portland	6:00
Tuesday	Dec. 1	Boston College	Chestnut Hill, Mass.	7:00
MAINE TIP-OFF CLASSIC				
Friday	Dec. 4	Florida International vs. Ole Miss	Memorial Gym	4:00
Saturday	Dec. 5	Florida International	Orono	2:00
Sunday	Dec. 6	Mississippi	Orono	1:00
Wednesday	Dec. 9	St. Peter's	Jersey City, N.J.	7:00
Saturday	Dec. 12	Rhode Island	Portland	1:00
Sun & Tues	Dec. 27 & 29	Bell Atlantic Holiday Tournament Clemson University Rutgers University University of Texas	Piscataway, N.J.	TBA
Sat-Sun	Jan. 2-3	Comfort Inn Chippewa Classic Central Michigan Siena Valparaiso	Mt. Pleasant, Mich.	TBA
Friday	Jan. 15	Drexel	Memorial Gym	7:30
Sunday	Jan. 17	Delaware	Orono	1:00
Thursday	Jan. 21	Vermont	Burlington, Vt.	7:30
Saturday	Jan. 23	Hartford	Orono	2:00
Tuesday	Jan. 26	Dartmouth College	Orono	7:30
Thursday	Jan. 28	Boston University	Boston, Mass.	7:30
Saturday	Jan. 30	Northeastern	Boston, Mass.	2:00
Thursday	Feb. 4	Central Connecticut	New Britain, Conn.	6:00
Sunday	Feb. 7	New Hampshire	Orono	2:00
Thursday	Feb. 11	Northeastern	Orono	7:30
Saturday	Feb. 13	Boston University	Orono	2:00
Thursday	Feb. 18	Hartford	Hartford, Conn.	5:15
Saturday	Feb. 20	Vermont	Orono	1:00
Wednesday	Feb. 24	Maryland-Eastern Shore	Orono	7:30
Friday	Feb. 26	Delaware	Newark, Del.	7:00
Sunday	Feb. 28	Drexel	Philadelphia, Pa.	1:00
Tues-Sat	March 9-13	NAC Tournament	TBA	TBA

Bold indicates home games.

* - indicates North Atlantic Conference games.