

The University of Maine

DigitalCommons@UMaine

---

Vocal Popular Sheet Music Collection

Public domain (may be downloaded in full)

---

1919

## On The Old Ohio Shore

Robert King  
*Composer*

Nat Osborne  
*Composer*

MacDonald  
*Lyricist*

DeTakacs  
*Illustrator*

Follow this and additional works at: <https://digitalcommons.library.umaine.edu/mmb-vp>

---

### Recommended Citation

King, Robert; Osborne, Nat; MacDonald; and DeTakacs, "On The Old Ohio Shore" (1919). *Vocal Popular Sheet Music Collection*. Score 3027.

<https://digitalcommons.library.umaine.edu/mmb-vp/3027>

This Book is brought to you for free and open access by DigitalCommons@UMaine. It has been accepted for inclusion in Vocal Popular Sheet Music Collection by an authorized administrator of DigitalCommons@UMaine. For more information, please contact [um.library.technical.services@maine.edu](mailto:um.library.technical.services@maine.edu).

# ON THE OLD OHIO SHORE



WORDS BY  
BALLARD MACDONALD  
MUSIC BY  
NAT OSBORNE  
AND  
ROBERT KING

*fak*  
THIS  
PHON  
AND ON THE OLD

Vp. 009839  
1919

MUSIC  
PUBLISHERS  
Shapiro, Bernstein & Co.  
100 BROADWAY & 47th STREET  
New York



# On The Old Ohio Shore

Words by  
BALLARD MACDONALD

Music by  
NAT OSBORNE  
and ROBERT KING

Slow (with expression)

Piano introduction in 2/4 time, key of G major. The music is slow and expressive, featuring a melody in the right hand and a supporting bass line in the left hand. The piece concludes with a forte (fz) dynamic marking.

*Vamp*

When I lay me down to sleep I al ways say a pray'r  
Years have passed since last I saw my old O - hi - o home

Musical notation for the first vocal line, including a piano (p) dynamic marking and a vamp section.

For the dear old folks at home and wish that I were there  
And the old folks that I've missed since I left them to roam

Musical notation for the second vocal line.

They are ev - er in my thoughts, by night as well as day And  
Gone a - las the sweet-heart who was all that life held dear And

Musical notation for the third vocal line, including a piano (p) dynamic marking.

when I lay my head up - on my pil - low then I say:  
when I say my prayers at night I on - ly hope shell hear:

Musical notation for the fourth vocal line, including a piano (p) dynamic marking and a *rall.* (rallentando) marking.

Copyright MCMXIX by Shapiro, Bernstein & Co. Inc. cor Broadway & 47th Street, New York  
International Copyright Secured

Bagaduce Music  
Lending Library

Blue Hill, Maine

Honor:

737

All Rights Reserved

Obbligato

Sing of the days that are gone, Mag-gie, In the gloaming,  
 Please let me dream of the old O-hi-o shore Let my fan-cy wan-der to

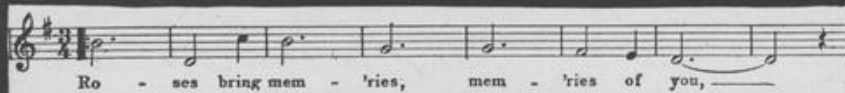
dar - ling, Sing of the life that is done, Mag-gie, The  
 happyscenesonce more Where in the shade of a weep-ing wil-low tree My

days that will ne'er re - turn Just a song at twi -  
 lit-tle sweet-heart gave her love to me Let me drift once a-gain down the moon-lit

light As we sang of yore When you and I were  
 stream That would be a won-der-ful dream Oh! Please take me back to that

young, Mag-gie, On the old O - hi - o shore shore  
 lit-tle cab-in door On the old O - hi - o shore shore

# POPULAR HITS OF THE DAY

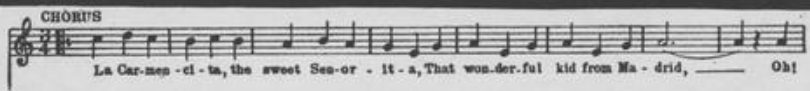


Ro - ses bring mem - 'ries, mem - 'ries of you, —

**"ROSES BRING  
MEMORIES OF YOU"**  
BALLAD

**"THAT WONDERFUL KID  
FROM MADRID"**

NOVELTY



La Car-mep - ci - ta, the sweet Sea - or - it - a, That won - der - ful kid from Ma - drid, — Oh!



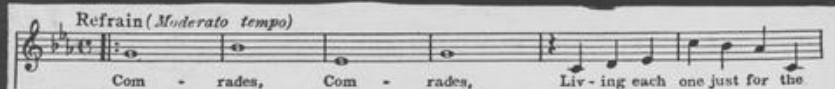
Dear old Sue, — You're my sweet - heart true, — Let me

**"DEAR OLD SUE"**  
BALLAD

**"YOU CAN'T GET LOVIN'  
WHERE THERE AINT ANY LOVE"**  
RAG NOVELTY



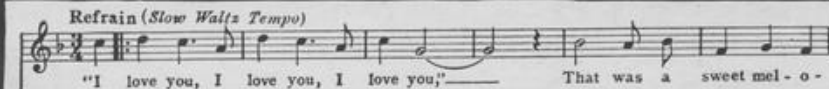
You can get WAT - ER where there aint an - y WELL. You can hear RINGING where there aint an - y BELL.



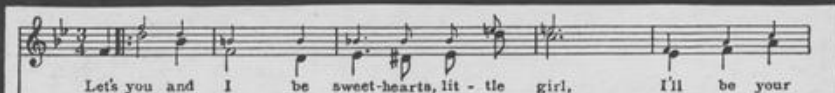
Com - rades, Com - rades, Liv - ing each one just for the

**"COMRADES"**  
BALLAD

**"MY LOVE SONG, MY  
ROSES AND YOU"**  
BALLAD



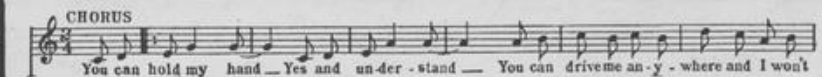
"I love you, I love you, I love you," — That was a sweet mel - o -



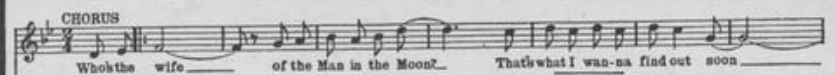
Let's you and I be sweet - hearts, lit - tle girl, I'll be your

**"SWEETHEARTS"**  
BALLAD

**"DON'T TAKE ADVANTAGE  
OF MY GOOD NATURE"**  
NOVELTY



You can hold my hand — Yes and un - der - stand — You can drive me an - y - where and I won't



Who's the wife — of the Man in the Moon? — That's what I wan - na find out soon —

**WHO'S THE WIFE OF  
THE MAN IN THE MOON?"**  
NOVELTY

NOTE: These Numbers are recorded by all Phonograph and Music Roll Companies  
ASK YOUR DEALER FOR THEM FOR YOUR PIANO, PLAYER PIANO and PHONOGRAPH