

Fall 11-7-1946

Maine Campus November 07 1946

Maine Campus Staff

Follow this and additional works at: <https://digitalcommons.library.umaine.edu/mainecampus>

Repository Citation

Staff, Maine Campus, "Maine Campus November 07 1946" (1946). *Maine Campus Archives*. 2765.
<https://digitalcommons.library.umaine.edu/mainecampus/2765>

This Other is brought to you for free and open access by DigitalCommons@UMaine. It has been accepted for inclusion in Maine Campus Archives by an authorized administrator of DigitalCommons@UMaine. For more information, please contact um.library.technical.services@maine.edu.

my veteran, Jim
in the service,
'42-'43, and had
the same year.
ants, stirred into
yet, the Maine
title, "The Best

JEAN CAMPBELL

The Maine Campus

Published Weekly by the Students of the University of Maine

Vol. XLVIII Z 265

Orono, Maine, November 7, 1946

Number 6

State Cross Country Champs Head For New Englands

Will Challenge New England's Best Harriers

By LEN PLAVIN

The University of Maine varsity cross country team, undefeated this season and recent state title winners, head for Boston's Franklin Park this Saturday to participate in the New England meet. They are rated second only to a powerful championship Rhode Island squad.

On Monday, November 4, Coach Chester Jenkins' harriers won the State Collegiate Cross Country Championship. Maine's Blethen was the individual winner, covering the three and a half mile course in 19 minutes 32½ seconds. He was closely followed by Colby's Robinson whose position was dropped due to a ruling disqualifying single entries from any school.

Due to the dropping of Robinson,
(Continued on Page Five)

Dow Field Students Moved On Campus To Fill Vacancies

On Sunday, November 3, the one hundred forty-three Dow Field students moved into the vacant rooms in North Dormitories.

From reports, many of the fellows think that the new rooms are superior to those at the air field while others feel that the move was not to their advantage. The increase in personnel at North Dormitories has brought the total headcount at the Field House Dining Hall to 684.

Although the Dow Field students have joined the campus residents, buildings #14 and #17 in North Dormitories are not occupied and probably will not be opened at all.

Carrying a day's supply of books is now history for these men, and the MCA will no longer be their only refuge.

Most of the students will appreciate the extra sleep each morning and the elimination of the transportation factor will enable many of the men to take part in clubs and campus activities.

Already 1100 Sign In MCA Membership

Over eleven hundred students have so far signed pledges or paid dues in the first ten days of the MCA membership drive. Of this total number, 680 are men and 429 are women.

Increased enrollment makes the task of soliciting difficult; therefore, many students have not been contacted, especially is this so with the off-campus group. As yet, there have been no reports from buildings 6, 7, 10, or 11, North Dorms nor from Phi Mu Delta, Alpha Gamma Rho, Sigma Chi, Phi Eta Kappa, or Sigma Nu.

The drive was organized by Bonnie Howes and Ralph Barnet, women's and men's chairmen. They urge all who have not signed up to do so immediately. Membership in the MCA not only affords activities on the cam-

(Continued on Page Four)

'VICTORY WEEKEND' BEGINS TOMORROW

WALLA WALLA



—Photo by Floyd

Surprising attraction of last week's rally was Dean Elton E. Wieman, cheerleader. With all the skill of a man long interested in football, the Dean put on a startlingly interesting demonstration of cheer-leadership.

'Needle' Editors Asking For Magazine Copy

The next few issues of the Pine Needle are wide open for copy. The editor would like to get hold of some serious short short stuff, about one thousand to fifteen hundred words; some satire or straight humor running seven hundred and fifty to a thousand words, and of course any and all types of poetry, cartoons, and occasionally straight factual articles.

First Semi-Formal Starts Weekend Rolling; Traditional Bowdoin-Maine Game Is Climax

Victory week end for the University of Maine will be ushered in here on campus Friday night with the first semi-formal of the year, and will continue at Brunswick Saturday when the Black Bear gridders will battle Bowdoin before a large crowd of Maine students and alumni. The football game will determine second place and a possible tie for first in the State Series.

The Victory Weekend semi-formal, first of the 1946-47 season, will feature music by The Maine Bears. The dance will be held from nine until one o'clock.

Up to now, all week-end dances have been informal, stag affairs and, although they were successful, considerable demand has been made to have a semi-formal "couples" dance.

The semi-formal is sponsored by Ocunmo, the off-campus University of Maine men's organization. All off-campus freshmen are able to attend
(Continued on Page Four)

Glee Club Cabaret Is Now Postponed

The Glee Club Cabaret Extravaganza has been postponed until Friday, December 6th. The program and dance will start at the same time, 7:30 and 9:30 respectively. Admission will be 50¢ plus tax.

The entertainment will include such Hollywood talent as the Andrews Sisters, The Ink Spots, Danny Kaye, and others. Phil Craig will be the master of ceremonies.

The Cabaret Extravaganza was postponed from Nov. 23rd because there are to be big houseparties in all the frats on that night, and it was impossible to get the Maine Bears for that date.

A Show At The Last Rally



—Photo by Floyd

Campus Calendar

Thursday, November 7

Tumbling W. Gym—7:00
Glee Clubs 300 Aubert—7:15
Band Armory—7:15

Friday, November 8

Ocunmo Semi-formal
Memorial Gym—9:00

Sunday, November 10

Sunday Services
300 Club MCA—7:30

Tuesday, November 12

Square Dance Club W. Gym—7:00
Orchestra 17 SN—7:15

Wednesday, November 13

Modern Dance Club W. Gym—7:00

Fresh Club
Wednesday Morning
Service MCA—6:45

The Maine Masque Has Season Tickets To Sell For \$2.40

Season tickets for the Maine Masque Theatre productions will go on sale one week from today, Thursday, November 7.

Tickets may be purchased from Maine Masque representatives in each dorm and house, or at room 330 Stevens Hall between the hours of 9:45 a.m. to 4:30 p.m.

Season ticket holders must report to room 330 Stevens between the hours of 9:45 to 4:30 from Monday, Nov. 11, to Friday the 15th, to select their seats for the shows. The seats will be selected for all four Masque productions at this time.

The cost of the season tickets will be \$2.00 plus forty cents tax. Regular tickets for the productions will be 90 cents including tax, for each show. As there are only 300 seats in the Little Theatre, only 1,200 persons, less than half the student body, can see each production.

The performances of "State of the Union" will be on November 20, 21, 22, and 23. The second production will be "Elizabeth the Queen" by Maxwell Anderson. It will be presented on December 11, 12, 13, and 14.

Students Get Meat From Maine Woods

According to the Town Clerk in Orono, about forty-two veterans at the University of Maine have been issued hunting licenses through her office.

Of the non-veterans residing at the University, thirteen have been issued such licenses by the Orono Town Clerk.

Approximately four thousand students and alumni will represent the University of Maine at the traditional State Series battle between Bowdoin and Maine in Brunswick this Saturday afternoon, according to Faculty Manager of Athletics Ted Curtis.

A special train will leave Webster Station in Orono at 8:30 a.m. on Saturday, stopping in Bangor, and arriving in Brunswick at 11:30. This train will return at 5:30 that afternoon. The cost of the round trip ticket,
(Continued on Page Four)

University Suffers Again From Robbers As Money Vanishes

Crime struck again at the University of Maine, when more than \$700.00 was taken from four fraternity houses sometime between midnight and early dawn last Tuesday morning, according to the Bangor Daily Commercial.

The third robbery of its kind in the past two weeks, authorities estimate that between \$700.00 and \$1000.00 was removed from Phi Gamma Delta, Alpha Tau Omega, Delta Tau Delta, and Sigma Alpha Epsilon.

The thieves entered the houses early in the morning, ransacking the lower two floors, while the men slept in the rooms above. Their intimate knowledge of the various houses has led to a thorough investigation on the campus itself.

In an apparently leisurely manner, the thieves were able to search through fraternity cash-boxes and clothing, taking only cash and bills.

Previous robberies occurred at Beta Theta Pi House and Oak Hall, \$225
(Continued on Page Eight)

Services Offered By Notary Public

Notary of the Public work done free of charge has been offered to veterans by Maine undergraduate Armand Lizotte.

Lizotte, who is duly qualified for such work, says that he will be very glad to notarize terminal leave papers and other veteran's form, without obligation. He lives in the North Dormitories, building 1, room 5.

Art Department Wants Drawings For Pat's

Individuals who are interested in art and would like to make panel designs for Farnsworth's Cafe are asked to contact Mr. Thibodeau. Each person would be allotted a panel to do with what he wants. Ideas and sketches should be shown to Mr. Thibodeau first.

University Society

By BONNIE ANDREWS AND JOAN LOOK

Houseparties and buffet suppers were held in many of the fraternities for alumni brothers who came back for Homecoming week end. The chaperons for the parties and the approximate number of couples attending each house were as follows:

Delta Tau Delta held a vic party and buffet supper in their Delta Shelter Saturday with over fifty couples attending. On Friday night, a Hal-lowe'en party attracted eighty couples. **Sigma Alpha Epsilon** drew thirty couples, Mrs. MacCollum chaperoning.

Sigma Nu served a buffet supper with vic party later. Fifty couples attended, and Prof. and Mrs. Sparrow and Prof. and Mrs. John Stewart chaperoned. **Theta Chi** threw a vic

party, and surprised old members with a special cake. Chaperons were Mrs. Paine, new housemother, and Prof. and Mrs. John Robert Smyth.

Mr. and Mrs. Swift and Mr. and Mrs. Atherton chaperoned a **Sigma Chi** vic party which was attended by eighty couples. **Alpha Tau Omega**, decorated along an autumn theme, held open house with a buffet supper and vic dance. Thirty-five couples attended with Mr. and Mrs. Sam Sezak and Mr. and Mrs. Bill Sezak chaperoning.

Alpha Gamma Rho sponsored a vic party, with twenty-five couples. Mr. and Mrs. George Dow, Mr. and Mrs. Stacy Miller, and Mrs. and Mrs. Smith McIntyre chaperoned. Celebrating their 40th annual banquet, **Phi Eta Kappa** entertained the homecoming

brethren. Frank Pike '17, prominent Portland judge, was the main speaker.

Kappa Sigma served a buffet supper and held a vic dance later. Mr. and Mrs. Howard Keyo and Mrs. Hamilton chaperoned. Fifty couples attended. Mr. and Mrs. Lyle C. Jeness and Mrs. McDonough, house-mother, chaperoned a **Lambda Chi Alpha** vic dance, attended by thirty-five couples.

Beta Theta Pi served a buffet supper and a vic dance was held later in the evening. Thirty-five couples attended with Mr. and Mrs. John Romanyschys and Dr. and Mrs. Cornell chaperoning.

For the latest news of **frat pins**, Polly Gilson is wearing the pin of Phil Chute, and Polly Peen True the pin of Will Moulton. The engagement of Shirley Anderson to Andrew Sjostedt was recently announced.

Students will be interested to know that Mr. and Mrs. David Rose are the parents of a **baby girl**, Deborah Bird.

Women's Forum Hears Distinguished Speakers

Three representatives from the league of Women Voters were guest speakers at the first meeting of the Women's Forum held last Thursday afternoon.

The speakers were Mrs. Lamb of Portland, president of the state league, Mrs. Field of Portland, head of social activities, and Mrs. Austin Jones, connected with the Bangor league.

The next meeting will be held Thursday Nov. 14, at 4:30 p.m. in room B, North Estabrooke. Further discussion of the League of Women Voters will take place and plans for the year will be drawn up.

Deborah was born last week. Mrs. Rose, "Margo," is well known to the MCA students as she worked in that office two years ago.

Maine Radio Guild Badly Handicapped But Still Producing

Operating with what authoritative local radio engineers term "totally inadequate equipment and a poor studio," the Maine Radio Guild will put its third fall production over the air next Wednesday at 7:30 p.m.

An original comedy entitled "Pigs is Pigs" will be produced by an all-student cast. Mrs. Phyllis Williamson, adviser to the Guild, holds separate try-outs for each performance, generally on Tuesday afternoons, and rehearsals follow during the week.

The Radio Guild recently sponsored a dance, and proceeds of this affair, which netted less than one hundred dollars, will go towards the purchase of new equipment. However, president Ralph Higgins has stated that this will no more than begin what is a gigantic task if the Guild is to produce a mechanically acceptable program.

Varsity Debaters Face Competition

The Maine Debating Society will make its first out-of-state trip of the year when four debaters and coach Howard L. Runion journey to Worcester, Massachusetts this week end. Don Crossland, Nicholas Brontas, Irving Grey, and Clifford Worthing will make the trip.

The Maine teams will meet Clark University, Worcester Polytechnic Institute, and Holy Cross College, debating both sides of the collegiate and school-boy questions.

This is the first intercollegiate workout for the Society, which next week will meet Bates College.

GIFTS FOR ALL OCCASIONS
Visit the
Penobscot Indian Trading Post
Old Town, Maine

CUT DOWN NICOTINE

Frank
MEDICO
FILTERED
SMOKING

NO OTHER CIGARETTE CAN MAKE THIS STATEMENT!
Of all the leading cigarettes, PHILIP MORRIS is the only cigarette with an exclusive difference in manufacture—recognized by eminent medical authorities as being to the advantage of those who smoke!

- Replaceable filter in new Frank Medico Cigarette Holders, filters the smoke.
- Cuts down nicotine.
- Cuts down irritating tars.
- In zephyrweight aluminum.
- Special styles for men and women.
- \$2 with 10 filters, handy pouch and gift box.

S. M. FRANK & CO., INC., NEW YORK 22

The Flavor's All Yours...

when you smoke
PHILIP MORRIS!

CLEAN, FRESH, PURE
America's FINEST Cigarette!

Of course the flavor's ALL yours—in every PHILIP MORRIS you smoke all through the day! And here's why...

There's an important difference in PHILIP MORRIS manufacture that makes PHILIP MORRIS taste better—smoke better—because it lets the FULL FLAVOR come through for your complete enjoyment—clean, fresh, pure!

Try PHILIP MORRIS—you, too, will agree that PHILIP MORRIS is America's FINEST Cigarette!

CALL FOR PHILIP MORRIS
ALWAYS BETTER...BETTER ALL WAYS

The

Published Th
of the Univers
ter. Local ad
second floor fr
sion St. Memb
national advert
lege Publisher
17, N. Y. Ent
Orono, Me.

Housing

Housing since the fir
North Dor
trouble. Th
not breaking

The situa
to the exter
all men from
This moving
(1) vacanci
pledges, and
selves have

The men
comfortable
prefer North
the houses.
who had a
would not l

This spir
mirable, and
dents in oth
Next to gym
classrooms,
In fact, m
the North D

Congra

Congratul
for the reas
campaign is
no high-pres
tween the h
licity.

Just "Join
And we b
as more and
their own c
This sort
too. People
they feel its
We're mor
which is wil

Work T

Campus c
ever before.
by a loyal gr
people are m
The great
students has
all papers le
Until the jo
will not rec
after publica
Alice Fon
new staff-me
afternoons.
us out.

Editor.....
Business Man
Asst. Business
Subscription
Circulation M
Make-up Edit
News Editor.
Sports Editor
Assistant Mak
Contributing
Staff: Lala Jo
dan, Jean Cam
Bernard Mars
St. Thomas, C
Stotler, Willia
Larry Dunn,
Harlow, Hal J
Pat Hutto, Ric
Don Dexter, D
Mary Hollin
beth Clark, Ma
Margaret Gor
Preble.

The Maine Campus

Published Thursdays during the college year by the students of the University of Maine. Subscription rate: 75¢ per semester. Local advertising rate: 50¢ per column inch. Offices on second floor front and third floor, MCA Building. Tel. Extension 51. Member Associated Collegiate Press. Represented for national advertising by National Advertising Service Inc., College Publisher's Representative, 420 Madison Ave., New York 17, N. Y. Entered as Second Class Matter at the Post Office, Orono, Me.

Housing

Housing on this campus has steadily improved since the first week of school. Plumbing in the North Dorms is functioning without too much trouble. The heating systems of the pre-fabs are not breaking down with great frequency anymore.

The situation in the North Dorms has improved to the extent that the Administration has moved all men from Dow Field up to the main campus. This moving was made possible by two conditions: (1) vacancies were left in the North Dorms by pledges, and (2) facilities in the buildings themselves have been improved.

The men are finding their prefabricated rooms comfortable, and not inconvenient. Many of them prefer North Dorm accommodations to those in the houses. We know of more than one student who had a chance to move into Oak Hall, but would not leave his "Splinterville" brothers.

This spirit on the part of the students is admirable, and shows lots of common sense. Students in other colleges have not fared so well. Next to gymnasiums, quonset huts, and converted classrooms, prefab dorms are not bad at all.

In fact, many of the men who are living up in the North Dorms tell us they're pretty good, now.

Congratulations, MCA

Congratulations to the MCA Drive committee for the reasonable way in which the membership campaign is being carried out this year. There is no high-pressure salesmanship, no 100% race between the houses and dorms, no complicated publicity.

Just "Join the MCA."

And we believe that the drive will be a success, as more and more people send their dollar in—at their own convenience.

This sort of drive keeps the MCA on its toes, too. People are more likely to support MCA when they feel its benefits.

We're more inclined to support an organization which is willing to stand on its own feet.

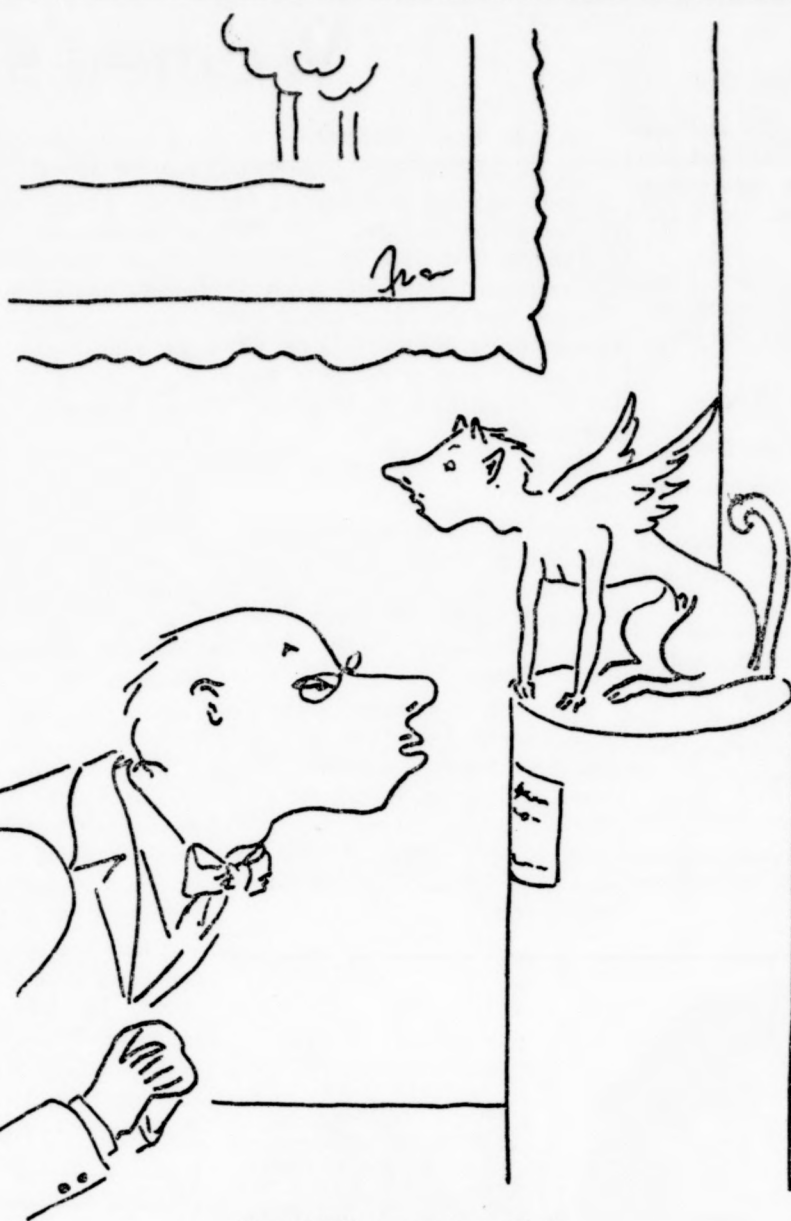
Work Thursdays, Please

Campus circulation is greater this year than ever before. The job of circulation is being done by a loyal group of staff-members, but many more people are needed.

The greatly increased numbers of off-campus students has placed a great load on the staff, since all papers leaving the campus must be addressed. Until the job is speeded up, off-campus students will not receive their papers until several days after publication.

Alice Fonseca, Circulation Manager, welcomes new staff-members. The job is done Thursday afternoons. If you can spare an hour, please help us out.

Editor.....Sandy Adams
Business Manager.....Dana Whitman
Asst. Business Manager.....Fay Jones
Subscription Manager.....Toni Doescher
Circulation Manager.....Alice Fonseca
Make-up Editor.....Don Gross
News Editor.....Larry Jenness
Sports Editor.....Fred McDonald
Assistant Make-up Editor.....Martha Leeman
Contributing Editors.....Bill Brennan, Norman Mosher
Staff: Lala Jones, Bonnie Andrews, Jo Look, Dot Jordan, Jean Campbell, Norma Drummond, Estelle Weeks, Bernard Marsh, Red Snyder, Pauline Marcous, Charles St. Thomas, Connie Thomes, Terry Garcelon, Thomas Stotler, William Brown, Joe Wedge, Monty Higgins, Larry Dunn, Barbara Patten, Janice Crockett, Betty Harlow, Hal Jack, Warren Turner, Una Jean MacDonald, Pat Hutto, Richard Cutts, Edward Woodbrey, Jean Webb, Don Dexter, Dick Jacobs, Paul Smith, Helen Buzzell.
 Mary Hollingdale, Thelma Mercer, Gail Smith, Elizabeth Clark, Madelyn Webber, Neil Como, Pat Woodward, Margaret Gorham, Grace Griffith, Dick Eaton, Ruth Preble.



Egad! What a monstrosity!

HATS OFF TO THE BAND

The Maine "varsity" band which can be heard performing at games, rallies, and R.O.T.C. affairs is the 1946 edition of an organization steeped in rich tradition.

Even before Maine officially became a state university, the band was the leading musical organization on campus. In World War I it was enlisted as a unit, and attached to the 103rd Maine Regiment.

Between that time and the spring of 1943, when coeds were admitted to membership for the first time, the band evolved as a military unit. In 1943-44

it was made up completely of ASTP's, but the girls came back again last fall as the junior soldiers marched away and civilians were still a rarity.

With the return to normalcy, ponderous questions arose. The University needed an all military band. It needed a band for other occasions, too. What about the willing and capable girls who had so ably filled the bill during wartime? What about the ex-G.I. who was fed up with military regimentation but who still wanted to toot a horn? Should there be two

(Continued on Page Eight)

MCA IS HUMAN, TOO

From the questions asked by people on campus during the MCA membership drive, it is apparent that the Maine Christian Association has not made clear to the campus in general just what we do, and what membership means.

We are primarily a religious organization and, as such, sponsor the non-denominational church services Sunday mornings, the Wednesday Morning Fellowship at the MCA Building, and deputations to nearby churches. When there is sufficient interest, we also sponsor religious discussion groups.

Each year we sponsor a week-long Embassy, bringing churchmen to the dormitories and fraternities on campus.

By our nature, we are also a service organization. We offer to all comers the facilities of the building, for study, recreation, and organization meetings.

There also are the offices of our General Secretary, Mr. Charles O'Connor, and our Women's Secretary, Mrs. Morla Timberlake, who are glad to give assistance to anyone on any problem, anytime.

We assist in useful work in neighboring communities through our Community Responsibility Committee, and have organized the Freshman Club and the 300 Club.

Wherever something needs to be done, we try to do it, to benefit the

campus at large, and the people participating.

The officers are elected by the total membership in the spring and they in turn appoint a cabinet to handle different areas of work, as for example, church services, which are handled by Esther Ring and John Smidlen.

This cabinet is responsible for planning and executing the activities of the MCA during the year. They cannot do all the work alone, of course, and ask interested people to participate. That is why there is a list of activities for each student to check on the membership card.

But, joining entails no obligation. It merely shows that the member endorses the activities of the MCA, and will help it by financial support.

If anyone knows of useful projects which we can accomplish on campus or in this vicinity, bring it to our attention.

We extend thanks to all who have joined, and to those who have given us much-needed support. For any who wish to join, and have not had the opportunity, membership forms are always available in the office.

If this does not explain the scope and aims of the MCA, please ask anyone in the organization, and we'll be glad to explain all we can.

—DON CROSSLAND

Dress To Impress?

Do women dress to impress men or to impress other women? Campus authorities, of the female species, claim both to be correct.

In these present days, it seems obvious that the average girl on the campus dresses to attract attention from the opposite sex. If not, why the trend toward wearing clothes which reveal more than conceal, as in the case of evening gowns and other sundry items.

Bathing suits are another fine example of this attitude. Surely, it is no more difficult swimming in a modest bathing suit than it is in one which gives the wearer a maximum of exposure.

Far be it from us to campaign against the present mode of attracting the opposite sex through physical charms. On the contrary, men are inclined to experience some pleasure from the habit.

Let's not base our conclusions on evening gowns and bathing suits alone. Even the average dress that a girl wears today has some appeal to the men, with the exception of baggy sweaters, appropriately termed "Sloppy Joes." There is very little that aggravates an average man as much as seeing a shapely beauty camouflaged in a burlap sack. The only time "Sloppy Joes" look even half-way appealing is when they are worn tucked inside a wide belt.

But to get back to the original subject, do women dress for men or not? Candidly, we don't know. We wish we did. Do you know?

—BILL BRENNAN & TANNIE SMALL

Goin' Perforatin'

I saw a man crossing the campus with a shotgun the other day, so I followed him. I thought there was going to be a wedding. Was I disappointed when we only went hunting.

The hunting season is full upon us. The surrounding woods reverberate from gun blasts. After dark, the myriad of searchlight beams crisscrossing the Maine sky remind one of Hollywood on premiere night. Counteracting this illegal jacking is giving our Game Wardens that haggard look. Stalwarts of the Maine backwoods have always maintained it to be open season on Game Wardens anyway.

However, the hunting methods used by us Maine Nimrods can not compare with the sheer virtuosity I saw one Tennessee lad display. He was knocking grey squirrels out of tall hickory trees by throwing rocks at them. He threw with his left hand, because he tore them up too much with his right. Furthermore, he always hunted barefoot since he used the "V" between his great toe and its neighbor to sight on the game.

Recently, when I asked another bookstore cowboy if he had done much hunting lately, he indicated that although he didn't roam the woods, he did love to prowl cocktail lounges. But—hand me down my shootin' iron, Eddie. I'm going out and perforate a moose!

—MONTY HIGGINS

They're All Around

Next week, if you go to the Bowdoin-Maine football game, or any other football game for that matter, take time out from watching the gridiron gladiators and cast a glance about you. You'll probably decide that observing the actions of your fellow spectators is much more fascinating than watching a football game.

There is the boozier, the snoozer, the lover, the hater, the pounder, the screamer, the mute, the grouchy, the happy, and many different combinations which result in grand characters, obnoxious individuals, or just plain guys. They can make a gathering interesting with their comments or they can disturb everyone.

There are many types of persons that go to football games, or any kind of public gathering. This week, let's look at the couple on the right—a large, broad-shouldered, red-nosed gentleman and the petite young lady with him.

Being a believer of Old Mr. Boston's teachings, he has come equipped to ward off the elements. Deep down in one of the pockets of his bear-skin coat is his jug, containing liquid coal, guaranteed to ward off the most severe cold wave, and perhaps produce a few warm ones. By the time the game has started, so has he, and the bottle is half empty.

Observe, students, his joyous nature as one team or the other, or perhaps both, gains a few yards. Feel, students, the spirit of his nature as he wildly waves his arms about, protesting a penalty. And watch, students, how he trickles down the stands after the game.

—"GEORGE"

BOWDOIN TRIP

(Continued from Page One)

\$4.50, is a special student reduction of 25 per cent from the Maine Central Railroad. Webster Station is located about three quarters of a mile down North Main Street.

"The ticket question," said Curtis, "has been a big problem to both Bowdoin and Maine. The demands for tickets from the Alumni and the large student body far exceed the seating capacity of the stadium.

"Bowdoin has been extremely fair and allotted over 4000 tickets to us for sale, 1700 for Alumni and the remainder for the faculty and student body both here and at Brunswick.

Mr. Curtis opened the sale of tickets last Thursday on both the Brunswick Annex and the Orono Campus. Tickets have been on sale all of Friday and Monday of this week to the student body and their wives and the faculty in exchange for Athletic Ticket #5 and \$1.50 and not until two days ago were students allowed to have a second ticket.

The date of sale for the Brunswick Campus was pre-advertised as being

MCA

(Continued from Page One)

pus and affiliation with The National Student YMCA and YWCA but also entitles the student to non-resident membership in any "Y.M." or "Y.W." in the country.

Advisers for the group are Morla Timberlake, Women's Secretary, and Charles O'Connor, General Secretary.

SEMI-FORMAL

(Continued from Page One)

the dance, by special permission of the Senior Skulls.

Tickets have been on sale this week in the Bookstore, at a dollar and a half per couple.

Chaperons for the semi-formal will be Dr. and Mrs. Spofford B. Kimball, Mr. and Mrs. Nathan Rich, and Mr. and Mrs. Matthew McNeary.

According to the committee, men are requested to wear suits.

last Thursday at which time approximately 50 per cent of the students there bought tickets.

Women's Athletics

BY HELEN BUZZELL

The annual Homecoming week end got under way Saturday morning with two hockey games played at the women's athletic field. The first game was the traditional "Hats Off" game. The freshmen beat the sophomores 2-0 and won the honor of discarding the white arm bands. During the game and at the half the Sophomore Eagles served refreshments.

The line-up of this game is as follows:

Freshmen: Carol Dartnell, Margaret Mullington, Grace Murray, Louise Litchfield, Florice Pratt, Carolyn Strong, Jean Dennison, Betty Friedler, Maggie Mullison, Shirley Johnson, Tessie Freeze.

Sophomores: Frances Callan, Priscilla Thomas, Jean DeRosa, Carolyn Mitchell, Dorothy Averill, Thelma Crossland, Evelyn Ellsworth, Phyllis Tibbets, Bobby Colwell, Gerry Bellefleur, Marilyn Coburn, Bobbie Gammell, Sue Biesel, Collen Richardson, Bea Thornton.

The second feature of the morning was the annual Student vs. Alumnae game. Although the children of many of the Alumnae were on hand to cheer the team on they weren't quite strong enough and the students won 2-1.

Lineup—Alumnae: Mary Leavitt '40, Lillian Lewis Davis '45, Peggy Stackpole '45, Jennie Mansen '45, Gloria Lombard '46, Mary Smith '46, Ruth S. Sheperdson '45, Ada Minott '45, Helen Mahan Hilier '42, Lucille Hall Gledhill '40, Phyllis White Bartlett '45, Vivian Halsey Johns '46.

Students: Billy Starret, Fay Jones, Jackie Brown, Val Warren, Betty Ray, Pauline True, Terry Haines, Anny Thomas, Barbara Vaughn, Cecile Johnson, Bobby Gammell, Barb McNeil, Evie Foster.

With two wins and two ties the Junior class led off the interclass girls' hockey tournament. The seniors are not far behind with one win and two ties and the sophomores and freshmen both have one win and one tie.

There are still five more games to be played before the season is officially over. The following is a list of the outcome of the games up to this time.

Sophomores: 4—goals by DeRosa 3, Thomas 1; Seniors: 1—goal by Brown. Seniors: 4—goals by Foster 3, Chip-

man 1; Juniors: 4—goals by Bachulor 3, True 1.

Freshmen: 2—goals by Mollison 1, Millingson 1; Sophomores: 2—goals by Tebbets 1, Biesel 1.

Juniors: 3—goals by Andrews 2, Cates 1; Sophomores: 1—goal by DeRosa 1.

Seniors: 3—goals by Brown 2, Foster 1; Juniors: 3—goals by Andrews 2, Cates 1.

Juniors: 5—goals by Andrews 4, Cates 1; Freshmen: 4—goals by Mollison 3, Millingson 1.

Freshmen: 2—goals by Millingson 2. Sophomores: 0.

The following is a report of the percentage of participants of the Health training program in the various dorms on the campus.

South Estabrooke 72%, Mary Tibbets, capt.; Balentine 22%, Betty Small, capt.; West Hall 94%, Peg Mollison, capt.; Elms Main House 11%, Emms Armstrong, capt.; Elms Annex 100%, Betty Friedler, capt.; East Hall 100%, Louise Litchfield, capt.; Colvin 22%, Norman Drummond, capt.; North Estabrooke, no report, Connie Thomas, capt.; Off-Campus, no report, Mary Mahon, Mary Dirks, capt.

In a recent meeting of the women's "M" club, Polly True, president, announced that the club would sponsor a basketball officials clinic. This is open for all girls who would like to referee the intramural basketball games. The first meeting will be held Nov. 12 at the Women's Gym at 4:30.

My girl never files her nails. She says they're not valuable enough.

For Complete Assortment of
POPULAR AND CLASSICAL
RECORDS
Visit the
Penobscot Indian Trading Post
Old Town, Maine

YOUR LATEST OUTSTANDING SCREEN HITS
BANGOR and ORONO
M & P Theatres

OPERA HOUSE
BANGOR

To End Nov. 7

Ernest Hemingway's
"THE KILLERS"

Nov. 10, 11, 12, 13
Sun., Mon., Tues., & Wed.

Errol Flynn, Eleanor Parker
"NEVER SAY GOODBYE"
Patti Brady, S. Z. Sakall

BIJOU
BANGOR

Thurs., Fri., Nov. 7, 8

"A SCANDAL IN PARIS"
George Sanders, Signe Hasso,
Carole Landis

Nov. 9, 10, 11, 12
Sat., Sun., Mon., & Tues.

Robert Young, Barbara Hale
"LADY LUCK"
with Frank Morgan

Bijou and Opera House operate continuously from 1:30 to 11 o'clock.
Matinee Prices: 35¢ to 5 o'clock

STRAND
ORONO

Wed. and Thurs., Nov. 6-7

"ADVENTURE OF TOM
SAWYER"
with Tom Kelly, Mae Robson
Plus

"PRISONER OF ZENDA"
Ronald Coleman, Douglas
Fairbanks, Jr., Madeline Carroll
Madeline Carroll
6:30-8:00

Fri., Sat., Nov. 8-9
"MAKE MINE MUSIC"
(Technicolor)

Nelson Eddy, Dinah Shore,
Benny Goodman
Also Three Shorts
Sat. Matinee 2:30-6:30-8:22

Sun., Mon., Nov. 10-11
"THREE LITTLE GIRLS IN
BLUE"
(Technicolor)

with June Haver, George
Montgomery, Vivian Blaine
Also Three Shorts
Sun. Matinee 3:00-6:30-8:24

Tuesday, Nov. 12
"COWBOY AND THE LADY"
Gary Cooper, Merle Oberon
Also Three Shorts
6:30-8:25

Wed., Thurs., Nov. 13-14
Double Feature

"WHITE TIE AND TAILS"
Dan Duryea, Ella Raines,
William Bendix
Plus

"THE FRENCH KEY"
Mike Mazurke, Evelyn Ankers
6:30-7:51



Information gives **YOU** the answers
... who gives them to **HER?**

A lot of people take the Information Service of the Bell System for granted. Little do they realize what it takes to answer some two and a half million questions during a normal day.

Of course it takes operators . . . over 12,000 highly skilled "Information" operators.

But, in addition, it takes a staff of trained executive personnel.

They plan this service for cities and towns across the country so that "Infor-

mation" can quickly find the latest listings of the many telephones within her area—from records that are brought up to date daily. And it is they who study operating methods and equipment in the never-ending search to make this service ever faster, ever better.

Is it any wonder that today, more than ever before, management is interested in young men with imagination and ambition . . . men to develop with the industry?

There's Opportunity and Adventure in Telephony

BELL



TELEPHONE SYSTEM

Mai

Frosh
Down
Wins

The Univer
cross country
demy 28-29 d
JV harriers 1
A feature
Douglas ran
the Frosh run
Order of finis

Frosh 28 vs.
Sprague (L),
Beaudry (M),
Craig (L),
(L), LaPlant
Perkins (M),
JV's 37 vs.
Conley (MCI),
(MCI), Brig
(MCI), Bro
(MCI), Clark
Brown (M),
(M).

Irvine's
Brunsw

Bill Irvine
journey to B
to meet the F
in a game to

The JV's s
week's one po
strengthened
squad of 10 o

In last week
scored Maine
broke off tack
ran 25 yards f
attempted co
have tied the

CROSS

(Continu

Maine finishe
compiled a m
this sport wh
score. Blethe
onds off the
the course be
might have bet
country races
most possible
because if one
his position ad
team score.

Maine finishe
tson second, I
seventh, Ever
tenth between
Only the first
counted.

With the M
undefeated so
ly taken the S
arises as to w
the team in t
collegiate Cro
fact is that th
but they are la
they do not ha
keeping close
vision.

Rhode Islan
of the New E
five men that
plus three pre
good. With th
riers, Rhode I
favorite to wi
other good cr
New England
Maine, Tufts,
versity. Blethe
ish in the fir
Folsom and J
five men score
ing for the titl

Maine Bears Meet Bowdoin For State Series Position

Frosh Harriers Down Lee; MCI Wins Over JV's

The University of Maine freshman cross country team defeated Lee Academy 28-29 during the week while the JV harriers lost to MCI 24-37.

A feature of both meets was that Douglas ran in each, finishing first in the Frosh run and third against MCI. Order of finish in both meets:

Frosh 28 vs. Lee 29: Morton (M), Sprague (L), G. Craig (L), Gill (M), Beaudry (M), Scammon (M), R. Craig (L), Sherman (L), English (L), LaPlante (L), Noyes (L), M. Perkins (M), Barr (M).

JV's 37 vs. MCI 24: Davis (M), Conley (MCI), Morton (M), Libby (MCI), Briggs (MCI), McGaffin (MCI), Brooks (MCI), Halley (MCI), Clark (MCI), Venette (M), Brown (M), Sjostedt (M), Knight (M).

Irvine's 'A's Play Brunswick Annex

Bill Irvine's JV "A" team will journey to Brunswick this Saturday to meet the Brunswick Annex eleven in a game to be played at 9:00 a.m.

The JV's still smarting from last week's one point loss to MCI will be strengthened by the addition to their squad of 10 of the JV "B" team.

In last week's game Pete Tsacolos scored Maine's touchdown when he broke off tackle, reversed his field and ran 25 yards for the JV's 6 points. The attempted conversion, which would have tied the score, was blocked.

CROSS-COUNTRY

(Continued from Page One)

Maine finished one, two, three and compiled a meagre twenty points in this sport where fifteen is a perfect score. Blethen's time was 27½ seconds off the course record and had the course been in good shape he might have bettered it. The way cross country races are won is to have the most possible men in the first division because if one man finishes fifteenth his position adds fifteen points onto the team score.

Maine finished Blethen first, Johnston second, Folsom third, Danforth seventh, Everett ninth, and a tie for tenth between Silsby and Hanson. Only the first five men's scores are counted.

With the Maine team having gone undefeated so far and having so handily taken the State meet, the question arises as to what the outlook is for the team in the New England Inter-collegiate Cross Country Run. The fact is that the Maine team is good, but they are lacking in the sense that they do not have five men capable of keeping close together in the first division.

Rhode Island, last year's winner of the New England event, has the five men that won last year returning, plus three pre-war runners who are good. With this complement of harriers, Rhode Island seems to be the favorite to win. There are several other good cross country teams in New England and among them are Maine, Tufts, Conn., and Boston University. Blethen will undoubtedly finish in the first division and possibly Folsom and Johnston, but there are five men scored on each team competing for the title.

Polar Bears May Take To The Air

BY MURPH LINEHAN

The University of Maine Varsity eleven will wend its way to Brunswick Saturday, to stage its annual battle grandiose with Bowdoin College at Whittier Field; the kickoff is slated for 1:30.

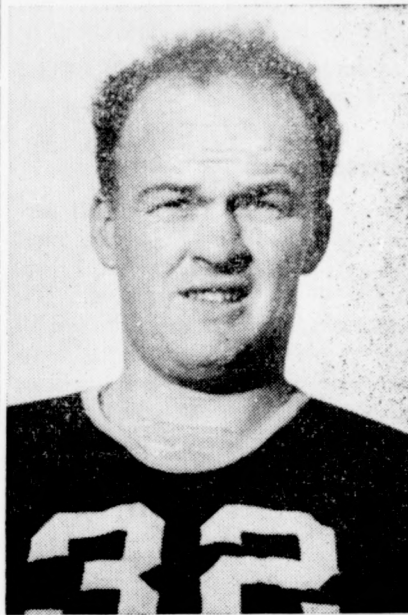
Second place in State Series competition is at stake, with a possible tie for first place with Bates, if Colby does the unexpected by upsetting the favored Bobcats.

As a result of their excellent showing against their Lewiston adversary last Saturday, Bowdoin is primed for Maine in no uncertain terms, and it's almost certain that the Polar Bears will wage aerial warfare.

As a result of last week's injuries, Maine's talented quarterback, Emile King, will be sidelined. However, Coach "Eck" Allen has been grooming several men to fill in at Emile's position.

Hal Parady, Old Town passer-deluxe, seems to be on the inside track for the job, but Nute, Clark, and the star of Saturday's JV-MCI game, Pete Tsacolos, will all undoubtedly see

SIDELINED



EMILE KING
—Photo by Newhall

plenty of action.

In comparing the two clubs directly, there is no doubt in anyone's mind at this point in the season of the invinc-

Parady Or Nute Sub For Injured King

bility of Maine's forward wall... more reason than ever for Bowdoin to play a passing game.

The Oronians' backfield is fast, and only needs to turn men like Dombkowski, Coulombe, Hagopian, and Parady loose to turn the fray into a rout.

On the other hand, the Polar Bears are amply stocked with fleet, elusive backs led by Jim Pierce who is headed for all-state honors.

Coach Dinny Shea has two experienced quarterbacks at his disposal in Eddie Gillen and Bud Beem. Matt Branche, high-jumping trackster, Art Donovan, Gil Dobie, Jr., and several others have turned in good performances this year, and are liable to catch fire at any time.

This will be no gentle T-party at Brunswick, for, as the 47th renewal of Maine-Bowdoin grid tussles, it promises to be a rough and rugged game, and probably the best tilt ever witnessed by the approximate 10,000 fans that will gather.

A prediction? Oh, yes... Maine 14, Bowdoin 6.

Outclassed Annex Frosh Upset JV 'B's

The Brunswick "Annex" eleven upset the University of Maine JV "B" squad last Saturday at Brunswick 12-7. Eugene Shipley of the JV squad suffered a broken ankle in the tilt and was taken to the Brunswick hospital.

The JV's trailing 12-0 suddenly came to life in the third quarter when Dick Tamm intercepted a Brunswick aerial on his own four yard line and raced 96 yards for a touchdown. DeRoche's perfect placement made it 12-7.

From then on it was a case of the JV's pushing the bigger Annex team all over the field but lacking the necessary punch to put across the winning tally. Fumbles on crucial plays cost the junior bears at least one touchdown in that final quarter.

Coach Sam Sezak was high in his praise of both teams. He said that the Brunswick team had improved 100 per cent over their showing at Orono against Maine Maritime Academy.

The game closed the season for the "B's" but 10 of the squad were sent to the JV "A" team. The list included: Hines, Piscopo, Waterman, Tamarese, Tamm, Gardiner, White, DeRoche, Rowe, and Trask.

Bear Line, Breaks Sink Colby For Snowswept 'Homecoming'

BY LEN PLAVIN

The University of Maine Bears defeated a hard fighting Colby College eleven 14-6 last Saturday in a near-blinding snow storm. Breaks seemed to have determined the outcome of the game with Maine getting the best of them. The Maine line, however, performed magnificently and easily outplayed their heavier opponents.

The first of the "breaks" came on the opening kickoff, when a short kick was taken by Presnell who carried the ball to the Colby 45 yard line. From this point on in the first half, the ball seldom was out of Colby territory, and when it was in Maine territory, it was due only to the superb punting of Colby's Miller.

Maine's first score came in the opening quarter when Phil Coulombe did some fine broken-field running through a big hole over left tackle and went 39 yards to the goal line. Maine threatened to score again in this quarter, but lost the opportunity when Belanger intercepted one of Emile King's passes. The second quarter was more or less a punting duel between King and Miller. The brightest plays of this period seemed to be on two of Maine's kicks, both of which rolled dead inside the Colby five yard stripe.

In the third quarter, with the snow denser than before, the ball squirted out of the hands of players on both teams. It was the recovery of one of Maine's fumbles that allowed Verrengia to go over for the lone Colby score. Maine's "Bull" Cianchette blocked Colby's attempt for the point.

It was in the third quarter that Emile King, Maine's stellar quarterback, was injured and taken out of the game. Also featured in this quarter was the running and passing of Ray

Verrengia. In the final period Maine recovered a bad pass from the Colby center, on the Mules' 15 and Dombkowski took the hard-to-handle ball over for Maine's second T.D. Rabbit added the point as he had done after the previous score and the game now stood at 14-6.

Maine's pass defense had not improved much over last week's system

Past Scores Show Maine Has Edge

In the ancient history department of the Maine vs. Bowdoin football scores, Maine has a definite edge. The two teams have opposed each other 46 times, with Maine being the victor 24 times against 16 wins for Bowdoin.

The largest score rolled up by either team was in 1900 when Bowdoin defeated Maine 38-0. The most recent game was in 1942 when Bowdoin defeated the Bears 13-7.

BEAR FACTS . . .

By Fred McDonald

Last Saturday brought Maine its first post-war victory on the football field but also cost the Bears the services of one of their most valuable players—Emile King. King injured a rib in the Bates game but still played against Colby. Late in the third period he was forced to leave the field.

Sunday, trainer Stanley Wallace said that based upon the doctor's report, King was definitely out for the season. Rumors were prevalent around campus that King did not have a broken rib but merely a strain and would be in there against Bowdoin. This was denied by Wally who said "unless we can work a miracle, King will not play Saturday."

The \$64 Question

With King out, the problem of finding a capable replacement to direct the T-formation faces the coaching staff. Probable successor to King's shoes is either Warren Nute or Hal Parady. Allen, earlier in the week said that either Parady, Nute, Clark, or Tsacolos would start at quarterback, depending on this week's performances during practice.

Tsacolos was brought up to the Varsity after his fine piece of work in the MCI game. It is doubtful if he sees much action in the Bowdoin game but it is a fitting recognition of his playing ability.

New Englands Next

Jumping into the X-country scene, we see that Chet Jenkins' Harriers copped a decisive victory in the State meet. Blethen turned in his usual first place. It's the New Englands Saturday with Rhode Island the team for Maine to watch. The title defending Rhodys are reported very strong.

Just Around the Corner

It won't be long before Basketball will be in full swing. Already, many of the veteran hoopsters as well as newcomers are over in the gym every day. There looks like a wealth of promising material for this year's hoop squad. The biggest problem will be selecting the men for the various teams. Danny Danforth, Ted Boynton, Al Burgess, and others from last year's State Series champions are around this year. An innovation to the basketball schedule this year will find the state series rivals playing each other once before the Christmas holidays.

The power of the Maine squad lies in the fact that their power is not centered in the few runners who take the top places in the meet. In a large field such as there will be Saturday, a team must be well balanced to take the crown. An example of the Maine balanced strength was shown in the recent state meet where the Pale Blue placed 7 men in the first ten positions at the finish.

Agile Girls Are Wanted To Form Tumbling Club

On Thursday nite, Nov. 7, there will be a meeting for all girls interested in tumbling. The meeting will begin at 7:15 and last until 8:15. If enough interest is shown a tumbling club will be organized.

Fall Tennis Tourney Is At Quarter-Finals

The fall tennis tournament has reached the quarter finals. The following players have advanced from the eighth finals: Among the seeded players eliminated in the tournament to date are Don Nicols, Charles Shaw, Bob Campana, Harold Avery, and Ed Hall.

Herman defeated Harry Allen 6-3, 9-7; Batherson defeated Malcolmson 6-2, 6-0; Don Stone defeated Steve Chase 6-0, 6-0; Don Stebbins defeated Willock 0-6, 6-4, 6-3; Cleveland defeated St. Thomas 6-3, 6-3; Van Carrsen defeated Walden 6-4, 6-2; Carr Leach defeated Joe Oneil 6-0, 7-5.

Candidates for Freshman Tennis Managers should see either upperclass tennis manager, Bernie Braen (North Dorms, Bldg. 8, Rm. 12) or Coach Small at 220 Stevens Hall as soon as possible.

Interscholastics Planned Tomorrow

The Maine Interscholastic Cross Country Meet will be held at the University of Maine on Friday afternoon, November 8. This meet is for all high school and prep schools in the state. The prep school division will be run off first, and immediately following the high schoolers will start on the four mile jaunt.

Many applications have been received by Ted Curtis, Faculty Manager of Athletics, and the indications are that there will be a large field running in this event, the last running of which was held here in 1942. In the 1942 meet, Lloyd Blethen won the single victory and led his Dover-Foxcroft team to a team title.

And then there was the little moron who stood on the street corner with a knife in one hand and a pistol in the other trying to decide whether to cut across the street or shoot down the alley.

Newman Club

The Rev. Edmund Fitzgerald, S.J., rector of St. Ignatius Residence in Portland, will be the speaker in the first of the Newman Club's series of lectures which will have as their general topic "Liberalism."

Father Fitzgerald, a member of the Society of Jesus, is one of the best known educators on the east coast, and is a former rector of Chevrus high school in Portland. The title of his speech is "Man's Modern Problem: How to State It." He will ask the question "How liberal is man in our modern society?"

The meeting will be held November 12, probably in the Little Theatre.

University Activities And Clubs

300 Club

At the last meeting of the 300 club an interesting and constructive discussion of the aims, purpose and organization of the club helped to map out the program for this year. It was agreed that the club should offer an opportunity for upper-class students to share opinions, promote activities, and mingle socially.

The club membership is open to all students and the meetings will be held every Sunday night at 7:00 in the MCA building. The club will elect officers Nov. 17. A slate will have

been drawn up, but the floor will be open to further nominations on the 17th.

All upper-class students are invited to this week's meeting. There will be a student-led discussion on current world problems.

Chess Club

A call has been issued for all persons interested in chess to meet Wednesday, November 13, at 7 p.m. upstairs in the MCA building. Old hands, amateurs, and beginners are all invited to attend, and if sufficient interest is shown, a chess club will be organized. Those attending should bring their own sets, if possible.

Contributors' Club

The Contributors' Club will hold an important meeting on November 12, at 7:00 p.m. in the Balentine Sun Parlor. Selections by Jean Miller, Denny

Evans, and Biff Shalack will be presented for criticism. All members are urged to be present. Former members of the Club who have returned to campus are invited to attend and participate in the club activities.

The purpose of the Contributors' Club is to encourage creative writing among its members. Members of the club are undergraduate students, graduate students, and faculty, selected on the bases of interest and ability in creative writing.

Meetings of the club will be held bi-monthly. Members will submit manuscripts for publication in the *Pine Needle*. The club hopes to sponsor campus speakers.

Politics Club

The Maine Politics Club, newly organized political discussion group, will meet next Wednesday night at 7:30 in the faculty room of South Stevens basement.

Maine Flying Club Will Meet Thursday, Nov. 13, In MCA

The first meeting of the year of the Maine Flying Club, which was to have been held last week, has been postponed until Thursday, Nov. 14, at 4:00 p.m. It will be held in the lounge of the MCA building and a cordial invitation to attend has been extended to all, male, female, student or faculty, who are interested in flying.

The purposes of the club are to reduce the cost of flying, provide for instruction and check-out, help renew and maintain current licenses, provide private and commercial physicals when due, and help keep members informed on latest Civil Air Regulations. Emphasis has been placed on the fact that it is also the Club's purpose to help those who are not qualified pilots and to get them started on the road to their 'solo.'

Manager Ken DeWitt of the Old Town Airport, who has given the Flying Club close cooperation in the past, is anxious to see the club a success this fall. He has two Aerionics, three Piper Cubs, and a PT 19 at the airport and has ordered a brand new Aerionica especially for the use of the Club.

The Flying Club was re-activated last spring, and has Robert F. Preti as president. Harry Watson is faculty adviser.

Sponsored by the Department of History and Government, the Politics Club is really a re-activation of the old Political Science Club. Membership is open, and discussions are informal, carried on around a circle.

Millard Whitaker, Frank Haines, and Priscilla Dodge were elected the three permanent officers of the club. Eric Hanson was elected to head up the discussion next week.

"The November Elections" is the topic, and the results of Tuesday's elections, the effect of the political machinery in the parties, and other political factors, will be dealt with by the members.

Any student who is interested in politics is invited to join in the discussion.

Ocummo

The next meeting of Ocummo will be held in the Reading Room of the MCA Building, this Monday night, 11 November, at 7:30 p.m.

Speaker will be Mr. Vincent Shannin, instructor of geology, who will

FOR NOVELTIES AND SOUVENIRS

Visit the
Penobscot Indian Trading Post
Old Town, Maine

Home Plate Restaurant

44 Main St.
Orono, Me.

Complete
FOUNTAIN SERVICE
and
FULL COURSE
DINNER

Come in and
Try Our Fine Service

Open 7 a.m. to 11 p.m.
Excellent Sandwiches
and Meals

CORSAGES AND FLOWERS FOR ALL OCCASIONS

THE LOUGEE-FREDERICK FLORAL ART SHOPS

Frank Haines, Beta Theta Pi House
Campus Representative

Bangor 3713

Orono 496

Du Pont Digest

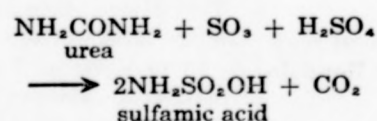
Items of Interest in the Fields of Chemistry, Engineering, Physics, and Biology

Low-Cost Sulfamic Acid Was Result of Newly Discovered Process

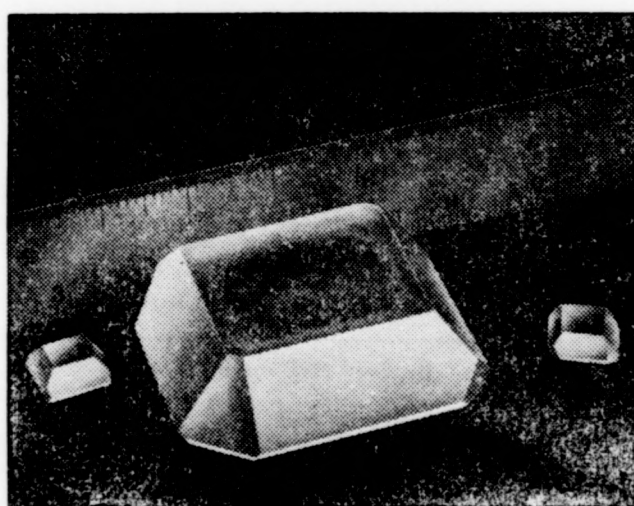
Once obscure laboratory chemical now finding wide use in industry

Sulfamic acid, which for years was merely another obscure laboratory chemical, is today being produced in carload quantities for a constantly growing list of uses because of a discovery made by a Du Pont chemist.

Believing that urea could be sulfonated to give a product which might have commercial utility, the chemist treated urea with fuming sulfuric acid. The reaction was exceedingly violent, and it appeared that decomposition had taken place to give ordinary ammonium sulfate. However, the chemist noted that the white precipitate which had formed did not dissolve rapidly in water as ammonium sulfate should, and further investigation proved that he had obtained sulfamic acid.



Thus the way was pointed to an inexpensive method of making this



Crystals of sulfamic acid

scarcely known chemical, and an intensive study of its chemical and physical properties has led to its development for a wide variety of industrial uses.

First Industrial Applications

The salts of sulfamic acid are being used extensively as flame-proofing agents. Highly compatible with cellulose, ammonium sulfamate is unique among fire retardants in that it does not cause stiffening or otherwise adversely affect the hand or feel of textiles and paper.

Another outstanding use for ammonium sulfamate is as a weed killer for the control of poison ivy, ragweed, and a variety of noxious annuals. Its effect on poison ivy is unmatched by any other product.

One of the most important industrial applications for sulfamic acid is based on the fact that it reacts quantitatively and very rapidly with nitrous acid. This has led to its wide use in eliminating the excess nitrite employed in diazotization reactions

for dye and colored pigment manufacture.

Soluble in Water and Non-hygroscopic

Sulfamic acid is a strong acid, and despite the fact that it is exceedingly soluble in water, it is a solid non-hygroscopic, non-volatile material which has found application as a laboratory titrimetric standard. Additional information will be found in the bulletin "Sulfamic Acid and Its Salts." Write to 2521 Nemours Bldg., Wilmington, Delaware.

Understandably, men of Du Pont are proud that their work in the laboratory has created and developed many products like this "chemical curiosity" to help make life safer, more pleasant and comfortable for all Americans.

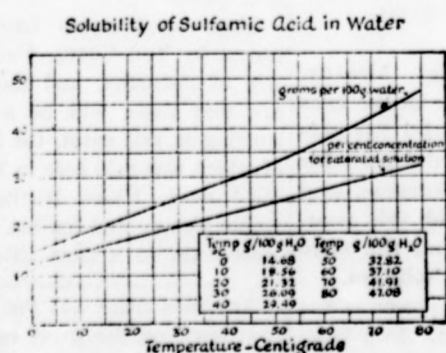
Questions College Men ask about working with Du Pont

IS THERE A FUTURE FOR ME AT DU PONT?

Every effort is made to initially select graduates for a specific job in line with their training and expressed preferences. Men are advanced as rapidly as their capabilities permit and openings occur. The broad research program and the ever expanding development of new chemical products as well as the growth of old established products offer ample opportunities for the technical graduate to grow in the organization.



BETTER THINGS FOR BETTER LIVING
... THROUGH CHEMISTRY
E. I. DU PONT DE NEMOURS & CO. (INC.)
WILMINGTON 98, DELAWARE



More facts about Du Pont—Listen to "Cavalcade of America," Mondays, 8 P.M. EST, on NBC

Masque Four

With its first tions in rehe planned for ne Masque Theatre of its busiest y

State of the Crouse is in its sal, with its op 20. This play added curtain giving new dep

The final cas Anderson's play were held earl cast has also st trast to State the Queen is a

The first r Masque membe Theatre Wedne play, No Time

Hanson, a Mai ing at the Bru stage debut at t elementary acti of theatre maj The cast inclu Dirks, Arlene and Paul Ford. skit developed also given.

The group c ness as brought and President

The Masque consists of: Lehman, Sally Toni Doescher Lee Davis, Pat

Civil En Society

The first ro Maine chapter Society of Ci held Thursday in 14 Wingate V. E. Shainin ject: "Explo Cape Horn to

Joseph Colco of the Maine meeting, with president; Ch tary; and Phil

MA

Fr

9:00-1:00

GA

Just re

JO

55 Pic

Club Thursday, CA

The year of the was to have been postponed. At 4:00 the lounge of cordial invitation extended to or faculty, ng.

of the Old given the Fly- in the past, ab a success onicas, three at the airport ew Aeronica he Club.

re-activated ert F. Preti nson is fac-

partment of the Politics ation of the b. Member- ions are in- d a circle.

ions" is the uesday's elec- political ma- other politi- with by the

interested in n the discus-

Decummo will Room of the nday night,

Vincent Sha- y, who will

Seven)

AND

ding Post ine

ate nt

RVICE SE

d service t p.m.

riches

Masque Plans To Produce Four Plays In 1946-47 Season

With its first two major productions in rehearsal and two more planned for next spring, The Maine Masque Theatre is preparing for one of its busiest years.

State of the Union, by Lindsay and Crouse is in its second week of rehearsal, with its opening date set for Nov. 20. This play will see the first use of added curtain tracks in the theater, giving new depth to the settings.

The final cast readings for Maxwell Anderson's play, Elizabeth the Queen, were held earlier this week, and this cast has also started to meet. In contrast to State of the Union, Elizabeth the Queen is a costume play.

The first mass meeting of the Masque members was held in the little Theatre Wednesday night. A one act play, No Time for Roses by Bea Besse Hanson, a Maine graduate now teaching at the Brunswick annex, made its stage debut at the hands of the class in elementary acting, under the direction of theatre major Joyce Faulkner '47. The cast included: Rita Flynn, Mary Dirks, Arlene Tankle, Parker Bogue, and Paul Ford. An original humorous skit developed by the acting class was also given.

The group considered Masque business as brought up by Director Bricker and President George Berger.

The Masque Council for this year consists of: George Berger, Betty Lehman, Sally Phillips, Dick Pratt, Toni Doescher, Lala Jones, Dot Salo, Lee Davis, Paul Hart, Jerry Herman-

son, Doug Johnson, Flo Sawyer, Winnie Poulin, Beth Clement, and Pat Hutto.

Five additional student representatives were elected at last night's meeting.

RELIGION

Services

Roman Catholic

8 and 10 a.m., Sun., Nov. 10
Little Theatre
Rev. Francis E. LeTourneau
Confessions, Sat. night, 7:00

Protestant

Episcopal Holy Communion
M.C.A. Reading room 9 a.m., Sun.
Father Herbert S. Craig
Non-Sectarian Services
11 a.m., Sun., Nov. 10, Little Theatre
Dr. J. Anton DeHaas, Professor of
International Relations at
Harvard U.

Jewish

Hillel services Fri., Nov. 8, 7 p.m.
Little Theatre
Glenn Kendall, Dean of the School
of Education

When asked what is the difference between mademoiselle and madame, one over ambitious freshman remarked, "Monsieur!"

Debate Tournament Postponed A Week

The Maine Debating Council's intramural tournament has been postponed one week in order that participants may have extra time to work on their cases. As now scheduled, the opening rounds of the tourney will commence November 18.

The question for debate, Resolved that labor should have a direct share in the management of industry, is termed by leading authorities as "quite vague, but most timely." Material will be placed on reserve in the University library.

Entries for the tournament are still being accepted at 350 Stevens Hall.

CLUBS

(Continued from Page Six)

speak on his exploration of the Andes Mountains in South America. His talk will be supplemented by Kodachrome movies and other photography. Completion of necessary elections will be done at the meeting.

Off Campus Women

The Off-Campus Women will hold a mass meeting Tuesday, November 12, at 5 p.m. in the MCA lounge.

Guest speakers for the evening will be Mrs. Loure, a representative of Beauty Counselor Products. All off-campus women are cordially invited.

Riding Club

All persons who are interested in forming a riding club are asked to contact Mr. Thibodeau either by note or in person. Special rates are available at Cowan's stables in Orono. If faculty members are interested they also should contact Mr. Thibodeau.

French Club

A business meeting of the French Club will be held on November 19. If the weather permits, a weiner roast will take place—the time and location to be announced later. Members, friends, and all interested persons are invited. Meetings are held once every two weeks.

BUY
THE
Prism

Frosh Club

On Wed., Oct. 30, the frosh club met in the reading room of the MCA.

After the meeting, Matthew Cullen, an instructor in Government, addressed the group with the topic "Russia's Challenge."

MUSIC

IS OUR BUSINESS

QUALITY

IS OUR POLICY

RADIOS
PHONOGRAPHS
COMBINATIONS
RECORDS, ALBUMS

Bangor's Most Complete
Music Store

ANDREWS MUSIC HOUSE

118 Main St., Bangor

Civil Engineering Society Will Meet

The first regular meeting of the Maine chapter of ASCE, American Society of Civil Engineers, will be held Thursday evening, November 7, in 14 Wingate hall at 7. Professor V. E. Shainin will speak on the subject: "Exploring the Andes from Cape Horn to Peru."

Joseph Colcord was elected president of the Maine chapter at an earlier meeting, with Joseph Dondis, vice president; Chappy Chapman, secretary; and Phillip Spiller, treasurer.

RAY McKINLEY

Former Leader
of
Glenn Miller's AAF Band

and his
20 Piece Orch.
Tues., Nov. 12, 1946
Bangor Auditorium

U. of M. Girls
will be given late permission
for dance

TICKETS ON SALE

At

THE BOOKSTORE

\$1.55 Per Person

MAKE A DATE FOR THE SEMI-FORMAL

Friday Evening, November 8 — Couples Only
Music by the Maine Bears

9:00-1:00

\$1.50 per couple

SPORT COATS

Matched with

GABARDINE SLACKS

Just received a huge shipment of all wool Sport Coats

\$17.33 TO \$25.00

2000 pairs of slacks in stock!

JOHN PAUL CO.

55 Pickering Square

Bangor



Ease in action

IS A CINCH
WHEN YOU WEAR
TRAMPEZE "MOCS"

Right in step with your most vigorous pace . . . that's our Trampeze moccasin! Yes, its finer construction, its softer antique brown leather consistently "play up" to your feet!

Trotters for Girls	\$7.50
Trampeze for Girls	5.00
Trampeze for Boys	5.50

As advertised in Esquire

BEN SKLAR

107 Center St. Old Town

Orders Delivered on Campus

Phone 507

BAND

(Continued from Page Three)

bands, or just one?

In the end, a committee instigated by the Men's Student Senate working with Professor Sprague and Colonel Fuller made the following recommendations under which the band is now being administered: 1) There be only one band organization; 2) This organization be considered the varsity band and that from its membership a sufficient number of men be taken to perform such duties as the military department might require; 3) These men performing in the military section of the band shall in some manner receive credit in addition to that received for regular band duties.

As yet the band has not had much chance to organize within itself, to elect officers, or formulate plans for the year. During the past year, a shortage of suitable material for uniforms has hindered any progress towards getting the Maine Band properly outfitted.

This year, some action will be taken on that score. The band is a very important function in our campus life. With the enthusiastic backing of students, alumni, and administration the time can be shortened when our band is not just a uniform, but a group presenting a striking colorful appearance. No more olive drab borrowed from the military department!

—PAULIE MARCOUS

The difference between wealth and poverty is plenty.

GREETING CARDS FOR ALL OCCASIONS

Visit the

Penobscot Indian Trading Post
Old Town, Maine

Wesley Foundation Will Meet Sunday

Rev. Charles O'Connor will be the discussion leader this week at the Student Forum of the Wesley Foundation to be held in the Orono Methodist Church on Sunday, November 10, at 7 p.m. The topic for discussion will be "What to Believe about the Church?" There will be a social hour following the discussion period. All students are welcome.

CRIME

(Continued from Page One)

having been stolen from the Beta house and mostly small change and personal effects from Oak Hall.

The Oak Hall robbery allegedly was

If you hit a clock with a hammer would that be killing time?

The Travel Wise Stop at...

BANGOR HOUSE
BANGOR ★ ★ ★ MAINE

When you or your friends
"come to town"
Good meals—cheery rooms
from \$1.75 a day

Ted Newhall

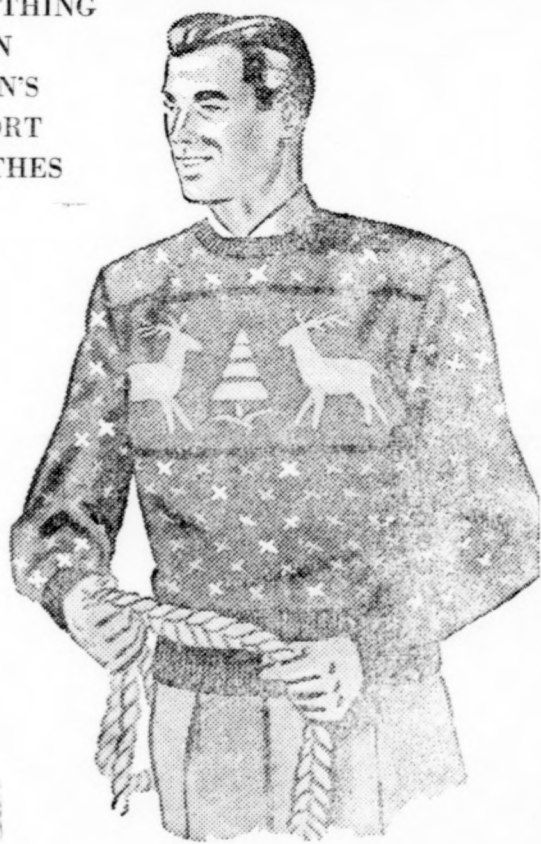
Photographer

Bring in your roll film for
quality enlarging, printing,
and developing.

48 hour service.

Bank Building Orono 8171

EVERYTHING
IN
MEN'S
SPORT
CLOTHES



BUY MCGREGOR SPORTSWEAR!

IT'S SMART — IT WEARS!

• SWEATERS • JACKETS
• PARKAS • PLAID SHIRTS

Also a fine line of Gloves — Hats —
Scarfs, etc., at

FREESE'S MEN'S SHOPS

BANGOR

done by a suave outsider who posed as a student for several weeks, winning the confidence of several of the freshmen. He stayed around the MCA Building, roomed in Orono, and often spoke of his "classes" and his "professors." Using the name Neville St. Claire, he allegedly succeeded in gaining access to rooms in Oak Hall, from

which he took small cash and some personal effects, then he left by taxi for Bangor. He was recognized by someone in the Portland Union Station, and as yet has not been found. It is believed that he left the State.

In the MCA Building he gained the friendship of everyone, telling many of the coeds that he was a transfer from

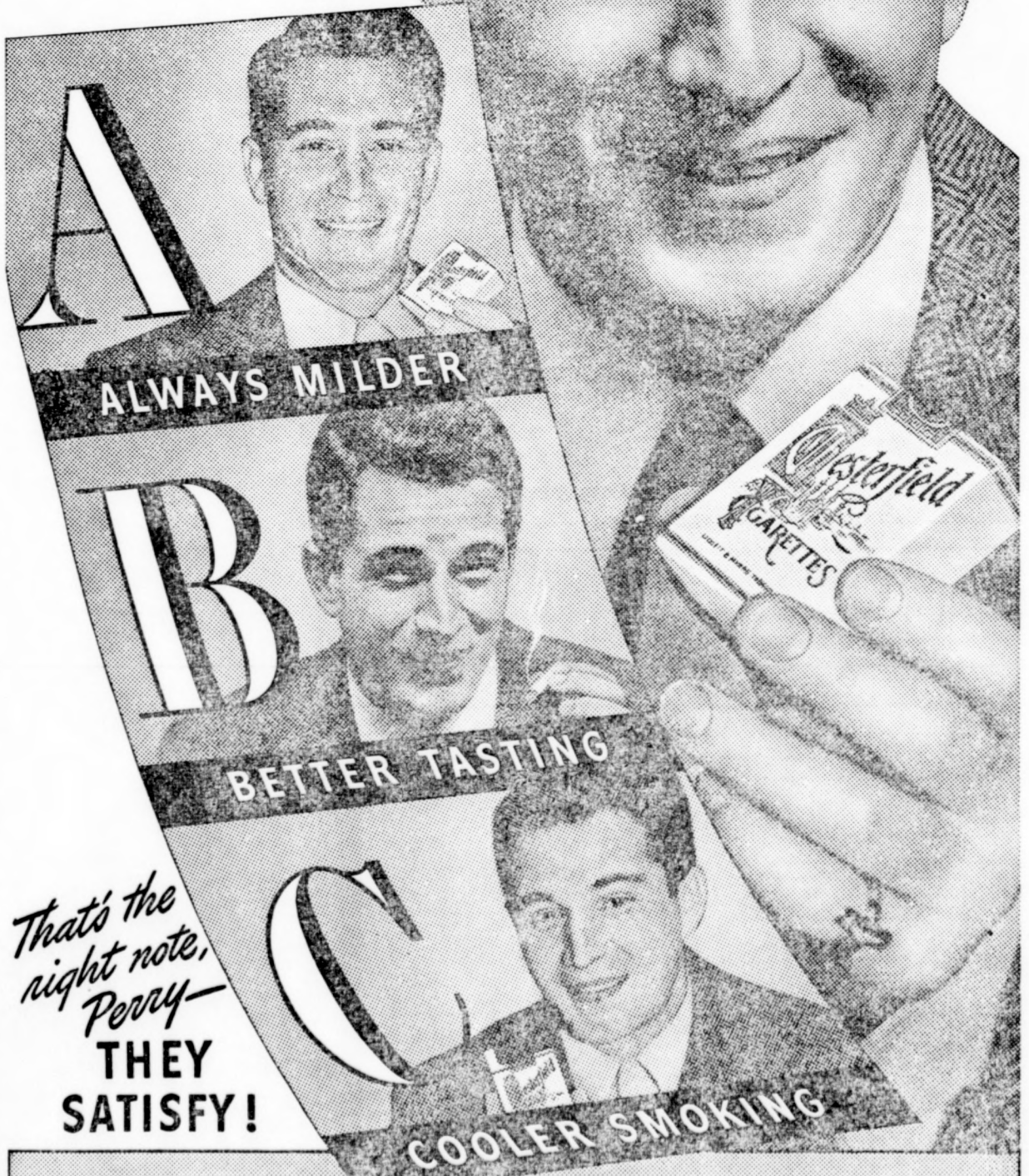
one of the larger midwestern universities. While there, he left a notice on the bulletin board, stating: "LOST—Horn-rimmed glasses. If found, please return to Rm 303, Oak Hall. Neville St. Claire."

This notice was still on the bulletin board last Tuesday, and is now in the possession of the The Maine Campus.



Perry Como

STAR OF THE
CHESTERFIELD SUPPER CLUB
ALL NBC STATIONS



That's the
right note,
Perry—

THEY
SATISFY!

ALWAYS
BUY

CHESTERFIELD

ALL OVER AMERICA—CHESTERFIELD IS TOPS!

Copyright 1946, LIGGETT & MYERS TOBACCO CO

Vol. XLVIII

Five S Begin Maine

Rushing of class transfer service women the five Maine s November 6, w were first made

The first w Monday and i Friday night.

Each sorority on the rules la Council. The spective rooms to sing songs, general, meet th and to examine ery, scrapbooks

Freshman gi o'clock permiss cession in orde able to have a b become acquaint

The same ro the sorority ea con Pi in the M reation Room, C Estabrooke Re Delta Delta in Phi Mu Delta parlor, and Pi dent's Room, N will be a week the second wea mainder of the outlined in com

Lee Over And Win Planned

A two-day c northeast of Li MOC this wecl be a large, we bunks, a rowboa and interesting, round about.

Again, this tr sign-up sheet w posted on the M the Bookstore. should sign the

(Continued)

Drawings For Deb

Drawings for the Maine Debat debate tourname at a Debate So in 275 Stevens F be accepted up meeting.

Topic for the t be run on a do is: Resolved, Th direct share in t dustry. Teams must be prepare of the question.

Opening roun will be held on M and Dr. Howard of having the fin Little Theatre week.

Varsity deba the tournament, judges, along wi partment of spe part in the tourn