

The University of Maine

DigitalCommons@UMaine

Vocal Popular Sheet Music Collection

Public domain (may be downloaded in full)

1919

Molly: An Irish Love Song

Victor Herbert

Composer

Rida Johnson Young

Lyricist

Follow this and additional works at: <https://digitalcommons.library.umaine.edu/mmb-vp>

Recommended Citation

Herbert, Victor and Young, Rida Johnson, "Molly: An Irish Love Song" (1919). *Vocal Popular Sheet Music Collection*. Score 2662.

<https://digitalcommons.library.umaine.edu/mmb-vp/2662>

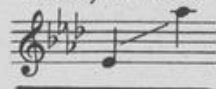
This Book is brought to you for free and open access by DigitalCommons@UMaine. It has been accepted for inclusion in Vocal Popular Sheet Music Collection by an authorized administrator of DigitalCommons@UMaine. For more information, please contact um.library.technical.services@maine.edu.

To My Friend
JOHN McCORMACK

In F, (*c to f*)



In Ab, (*eb to ab*)



MOLLY

An Irish Love Song

LYRIC BY

RIDA JOHNSON YOUNG

MUSIC BY

VICTOR HERBERT

PRICE 75¢ IN U.S.A. 7



M. WITMARK & SONS

NEW YORK • CHICAGO • PHILADELPHIA
SAN FRANCISCO • BOSTON
LONDON

Vp. 009115
1919

Mov

Molly

Oh, Molly dear, the Spring is here,
And birds their mates are calling;
They're nesting now and so should we,
For sheltered close we too must be,
When dark is falling.

Oh, Molly dear, the honey bee
The blushing rose is kissing;
Then why should you so cruel be?
The honey on your lips for me
You'd not be missing!

Oh, Molly dear, the sun so clear
The silver mist is mating,
And Mother Earth the sky draws near;
The World has wed, so why, my dear,
Should we be waiting?

Rida Johnson Young

Molly

An Irish Love Song

Lyric by
RIDA JOHNSON YOUNG

Music by
VICTOR HERBERT

Rather slowly

a tempo

Oh, Mol-ly dear, the

Spring is here, And birds their mates are call-ing; They're nest-ing now and

so should we, For shel-tered close we too must be, When dark is fall-ing.

Oh, Mol - ly dear, the hon - ey bee The

poco rit.

p a tempo

Detailed description: This system contains the first line of the song. The vocal line is on a single staff with a treble clef and a key signature of two flats. The lyrics are "Oh, Mol - ly dear, the hon - ey bee The". The piano accompaniment consists of three staves: a right-hand treble staff and a left-hand bass staff. The piano part begins with a *poco rit.* marking and features several triplet figures in the right hand. A *p a tempo* marking appears in the middle of the piano part.

blush - ing rose is kiss - ing; Then why should you so

Detailed description: This system contains the second line of the song. The vocal line continues with the lyrics "blush - ing rose is kiss - ing; Then why should you so". The piano accompaniment continues with similar melodic and harmonic patterns, maintaining the two-flat key signature and 3/4 time signature.

cru - el be? The hon - ey on your lips for me You'd not be

Detailed description: This system contains the third line of the song. The vocal line concludes with the lyrics "cru - el be? The hon - ey on your lips for me You'd not be". The piano accompaniment provides a harmonic and rhythmic foundation, ending with a final chord in the right hand.

with increased warmth

miss - ing! — *poco rit.* Oh, Mol - ly dear the

p *mf* *molto legato*

sun so clear The sil - ver mist is mat - ing, And

Moth - er Earth the sky draws near; The World has wed, so why, my

p poco rit.

dear, Should we be wait - ing? —

pp *rit.* *pp* *ppp* *rit.*

KISS ME AGAIN

LYRIC BY HENRY BLOSSOM AND THE SWEETEST MELODY EVER WRITTEN BY VICTOR HERBERT

ORIGINALLY INTRODUCED BY FRITZI SCHEFF IN THE DELIGHTFUL Mlle. MODISTE
THE WELL KNOWN PRIMA DONNA COMIC OPERA

It is Still Being Featured by Her and Hundreds of Others

ONE OF THE MOST BEAUTIFUL SONGS IN
THE WITMARK BLACK AND WHITE SERIES

PUBLISHED AS FOLLOWS

SOLO, FOUR KEYS—F. (a to f) G. (b to g) A. (c# to a) Bb. (d to bb) - 60c. each, NET OCTAVO— MIXED VOICES - 25c. NET
DUET, in A. Soprano or Tenor (c# to a) lead and Contralto or Baritone (a to g#) - 75c. NET WALTZ, for PIANO, . . . 60c. NET

Valse lento

Sweet sum-mer breeze, whis-per-ing trees, Stars shin-ing soft - ly a - bove; — Ros-es in
ppp molto espress.
bloom, waft-ed per-fume, Sleep-y birds dream-ing of love. — Safe in your arms, far from a -
pp
larms, Day-light shall come but in vain. — Ten-der-ly pressed close to your breast,
ten.

Copyright MCMXV By M. WITMARK & SONS



THE ABOVE CAN BE HAD WHEREVER MUSIC IS SOLD OR OF THE PUBLISHERS
M. WITMARK & SONS — WITMARK BUILDING — NEW YORK
Price, Solo 60c. NET Duet 75c. NET Octavo for Mixed Voices 25c. NET Waltz for Piano 60c. NET

If you are interested in Beautiful Songs (Sacred or Secular) send for our Catalog containing complete Poems and Thematic quotations from some of the most beautiful numbers in the well-known

WITMARK BLACK AND WHITE SERIES

SEND STAMP FOR POSTAGE

