

The University of Maine

DigitalCommons@UMaine

Vocal Popular Sheet Music Collection

Public domain (may be downloaded in full)

1923

When You Walked Out Someone Else Walked Right In

Irving Berlin

Composer

Follow this and additional works at: <https://digitalcommons.library.umaine.edu/mmb-vp>

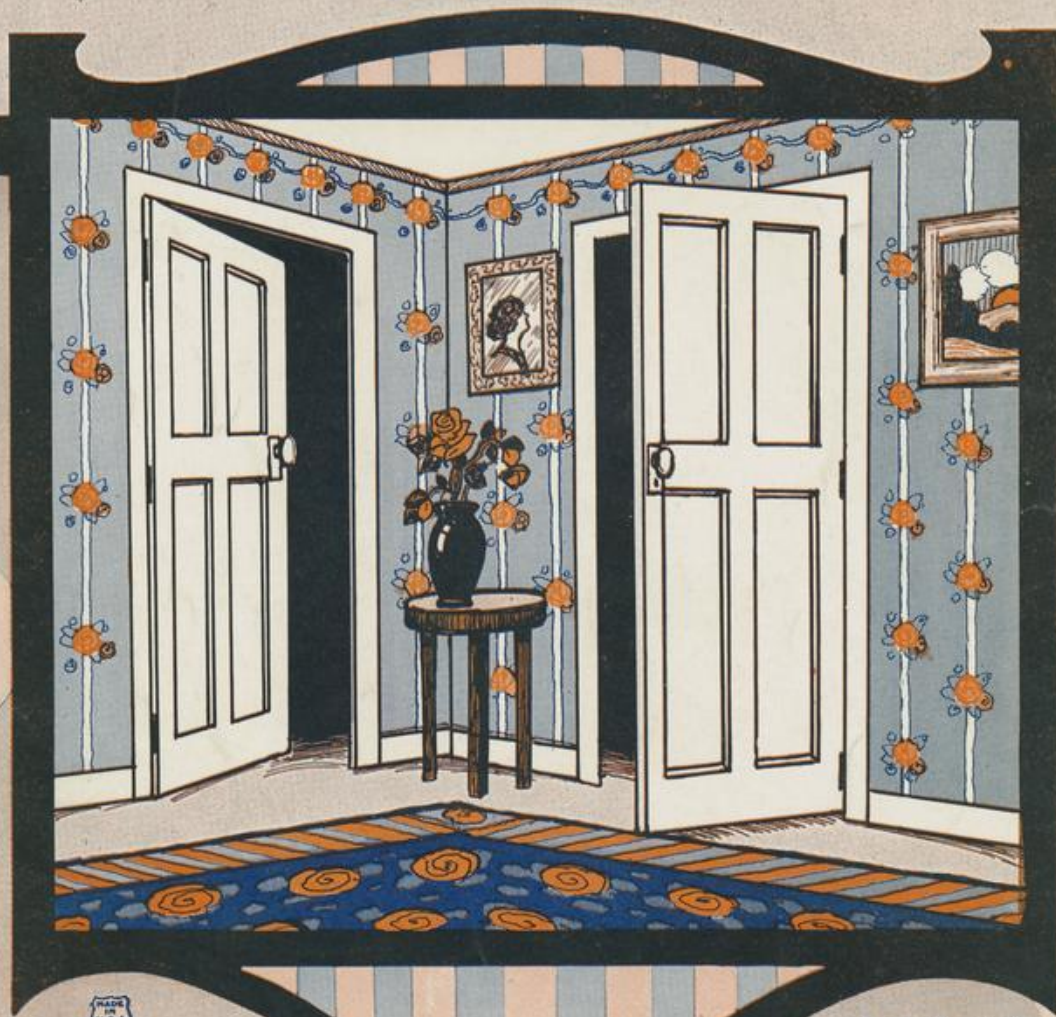
Recommended Citation

Berlin, Irving, "When You Walked Out Someone Else Walked Right In" (1923). *Vocal Popular Sheet Music Collection*. Score 2428.

<https://digitalcommons.library.umaine.edu/mmb-vp/2428>

This Book is brought to you for free and open access by DigitalCommons@UMaine. It has been accepted for inclusion in Vocal Popular Sheet Music Collection by an authorized administrator of DigitalCommons@UMaine. For more information, please contact um.library.technical.services@maine.edu.

WHEN YOU WALKED OUT SOMEONE ELSE WALKED RIGHT IN



WORDS AND MUSIC
BY
IRVING BERLIN

Irving Berlin, Inc.
MUSIC PUBLISHERS
1607 Broadway New York

Vp. 008573
1923
WHAN

perret

When You Walked Out Someone Else Walked Right In

Words and Music
By IRVING BERLIN

Moderato

The piano introduction is in 4/4 time with a key signature of one sharp (F#). It features a rhythmic accompaniment in the left hand and a more melodic line in the right hand. The tempo is marked 'Moderato'. The music begins with a series of chords in the left hand, followed by a melodic phrase in the right hand that leads into the vocal entry.

VOICE

My hon - ey
A hap - py

Vamp

mf

The vocal line begins with a rest, followed by the lyrics 'My hon - ey' and 'A hap - py'. The piano accompaniment continues with a rhythmic pattern. A 'Vamp' section is indicated, where the piano accompaniment plays a specific chordal pattern. The dynamic is marked 'mf'.

do you re - mem - ber 'twas a De - cem - ber day, I said that
cou - ple were we two while you were sweet to me, But now I'm

p

The vocal line continues with the lyrics 'do you re - mem - ber 'twas a De - cem - ber day, I said that' and 'cou - ple were we two while you were sweet to me, But now I'm'. The piano accompaniment provides a harmonic support. The dynamic is marked 'p'.

you would re-pent the day that you went a - way _____ You turned as
send-ing bad news to my lit - tle used to be _____ You thought the

red as a ru - by much too good to be true _____ You thought I'd
min-ute you'd shake me that it would make me blue _____ And I would

sit a - round lone-ly think - ing of on - ly you lit - tle you knew that
sit a - round lone-ly think - ing of on - ly you lit - tle you knew that

CHORUS

When you walked out — some-one else — walked right in —

p-f

Some-one with good news — stepped right in your shoes —

Some-bod-y else — took your place — on my knee — An-oth-er

sweet-ie in clov-er fuss-in' all o-ver me — I saw that

you grew so cold— love, so what could I do—

off with the old— love and on with the new—

When you walked out— hon-ey I just had to grin—

You left the door wide o - pen and some-bod-y else-walked in. in.

1. 2.

fz



THE SWEETEST AND MOST APPEALING BALLAD WRITTEN IN YEARS

DEAREST

YOU'RE THE NEAREST TO MY HEART

Words by
BENNY DAVIS

Music by
HARRY AKST

CHORUS

Dear - est I love you al

ways think of you First thing each morn - ing and

last thing at night - You're in my sight - guid - ing me right

Copyright MCMXXII by IRVING BERLIN Inc., 1607 Broadway, New York
International Copyright Secured All Rights Reserved

COPIES ON SALE WHEREVER MUSIC IS SOLD
This Number can also be had for your Phonograph and Player Piano