

The University of Maine

DigitalCommons@UMaine

---

Vocal Popular Sheet Music Collection

Public domain (may be downloaded in full)

---

1917

## We're Going To Take The Sword Away From William

Willie Weston

*Composer*

Follow this and additional works at: <https://digitalcommons.library.umaine.edu/mmb-vp>

---

### Recommended Citation

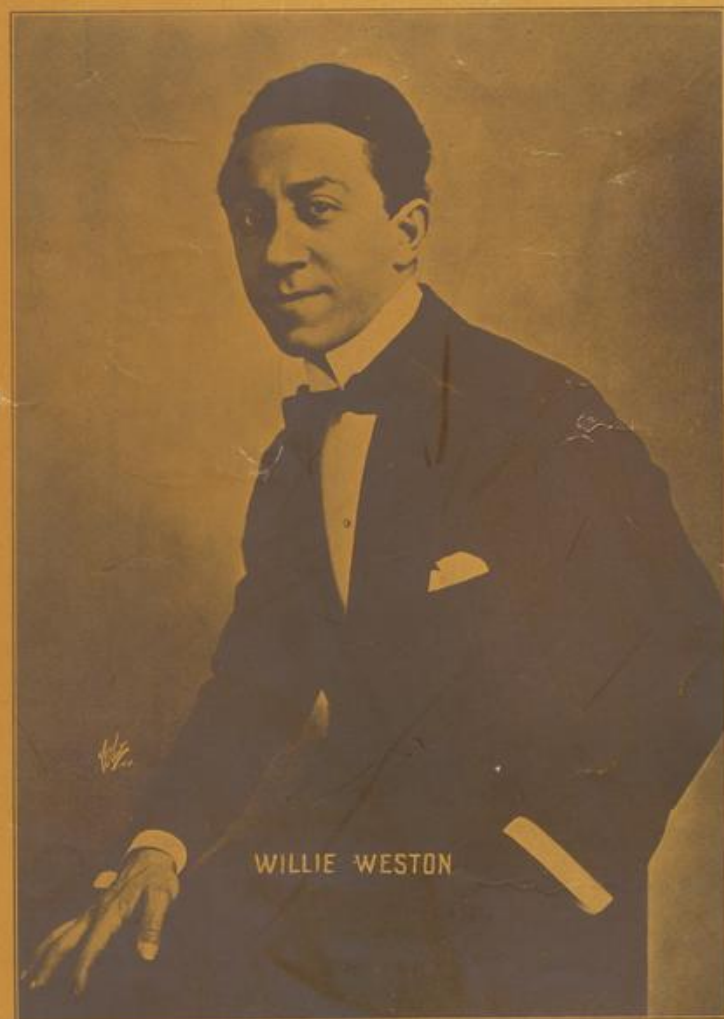
Weston, Willie, "We're Going To Take The Sword Away From William" (1917). *Vocal Popular Sheet Music Collection*. Score 1638.

<https://digitalcommons.library.umaine.edu/mmb-vp/1638>

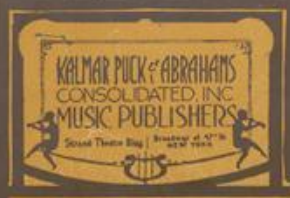
This Book is brought to you for free and open access by DigitalCommons@UMaine. It has been accepted for inclusion in Vocal Popular Sheet Music Collection by an authorized administrator of DigitalCommons@UMaine. For more information, please contact [um.library.technical.services@maine.edu](mailto:um.library.technical.services@maine.edu).

# WE'RE GOING TO TAKE THE SWORD AWAY FROM WILLIAM

*Words and Music  
by  
Willie Weston*



WILLIE WESTON



Vp.005983  
1917  
WE'RE

# We're Going To Take The Sword Away From William.

Words & Music  
By WILLIE WESTON.

Piano introduction in C major, 2/4 time. The right hand features a melodic line with eighth and sixteenth notes, while the left hand provides a steady bass accompaniment. The piece concludes with a forte (f) dynamic marking.

*Fill ready.*

*Voice.*

When a bad boy makes a noise Teacher takes a - way his toys  
Worse than an - y oth - er sin Is the lack of dis - ci - pline

The first vocal line begins with a rest, followed by the lyrics. The piano accompaniment continues with a steady bass line and chords in the right hand.

Keeps him af - ter school — To learn the gold - en rule There's a boy a - cross the sea  
Seems that Wil - lies dad — Spoiled his lit - tle lad Va - ni - ty has swelled his head

The second vocal line continues the melody. The piano accompaniment features a more active right hand with eighth notes and chords.

Just as bad as he can be He'll learn a thing or two — Here's what we're gon - na do —  
But you know what wise men said What e'er goes up comes down — And so must Wil - lies crown —

The third vocal line concludes the main body of the song. The piano accompaniment provides a strong harmonic support.

**Chorus.**

We're going to take the sword a - way from Wil - - liam — And  
We're going to take the sword a - way from Wil - - liam — And

The chorus is repeated twice. The piano accompaniment features a steady bass line and chords in the right hand.



then we're going to take his lit - tle drum \_\_\_\_\_ With - out his sol - dier suit \_\_\_\_\_ He  
 then we're going to take his lit - tle drum \_\_\_\_\_ With - out his sol - dier suit \_\_\_\_\_ He

won't look half so cute And then we're going to take his lit - tle gun \_\_\_\_\_ We're  
 won't look half so cute And then we're going to take his lit - tle gun \_\_\_\_\_ We're

going to make him march to Yan - kee Dood - - le I know these things will make poor Wil - liam  
 going to make him march to Yan - kee Dood - - le I know these things will make poor Wil - liam

sore \_\_\_\_\_ We'll sweep his U boats from the sea \_\_\_\_\_ And make the world free for De -  
 sore \_\_\_\_\_ And if he don't be - have and starts to yell We're goin' to kick him in his

1 2  
 moc - ra - cy So Wil - liam won't be a bad boy an - y more. — We're more. —  
 Keil Ca - nal So Wil - liam won't be a bad boy an - y more. — We're more. —



The Most Beautiful Combination of Words and Music Ever Written

# Bring me a rose

by  
Charles Shisler

Refrain. *Con Espressione*

Bring me a rose at twi - light, kissed by the spark - ling dew

*mp-f legato*

Bring me a rose from love - land, One that re - minds me of you,

dear, Each lit - tle pet - al tells me you're like an an - gel a -

Copyright MCMXVI by Kalmar, Puck & Abrahams Conso'l'd, Inc. Music Pub  
International Copyright Secured.

