

The University of Maine

DigitalCommons@UMaine

Vocal Popular Sheet Music Collection

Public domain (may be downloaded in full)

1921

Peggy O'Neil: Waltz Song

Gilbert Dodge

Composer

Ed G Nelson

Composer

Pease

Composer

Follow this and additional works at: <https://digitalcommons.library.umaine.edu/mmb-vp>

Recommended Citation

Dodge, Gilbert; Nelson, Ed G; and Pease, "Peggy O'Neil: Waltz Song" (1921). *Vocal Popular Sheet Music Collection*. Score 1374.

<https://digitalcommons.library.umaine.edu/mmb-vp/1374>

This Book is brought to you for free and open access by DigitalCommons@UMaine. It has been accepted for inclusion in Vocal Popular Sheet Music Collection by an authorized administrator of DigitalCommons@UMaine. For more information, please contact um.library.technical.services@maine.edu.

Peggy O'Neil

Monthly

By
HARRY PEASE
ED. G. NELSON
and
GILBERT DODGE

STANDARD EDITION
LEO. FEIST, INC. NEW YORK
CANADA, LEO. FEIST, LIMITED, 195 YONGE ST., TORONTO,
FRANCIS & TATEL, 100-102 CHURCH STREET, MONTREAL

REPRODUCED WITH PERMISSION OF THE THEATRE MAGAZINE

Vp-004394
1921

BEG



Reproduced with permission of The Theatre Magazine

Peggy O'Neil

Waltz Song

HARRY PEASE, ED. G. NELSON
and GILBERT DODGE

Tempo di Valse

Introduction for piano, marked *f* (forte). The music is in 3/4 time and consists of two staves of piano accompaniment.

Peg - gy O' - Neil is a girl who could steal An - y heart, An - y
Ev' - ry - things planned for a wed - ding so grand, In the spring I will

Vocal line and piano accompaniment for the first line of the song. The piano part is marked *p* (piano).

- where, an - y time, And Ill put you wise how
bring her the ring, Then some - where in town well

Vocal line and piano accompaniment for the second line of the song.

you'll rec - og - nize, This won - der - ful girl of mine,
both set - tle down And all through the day Ill sing,

Vocal line and piano accompaniment for the third line of the song.

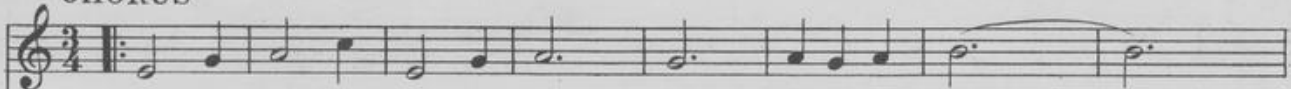
This composition may also
be had for your Talking
Machine or Player Piano

Copyright MCMXXI by LEO. FEIST, Inc., Feist Building, N. Y.
International Copyright Secured and Reserved

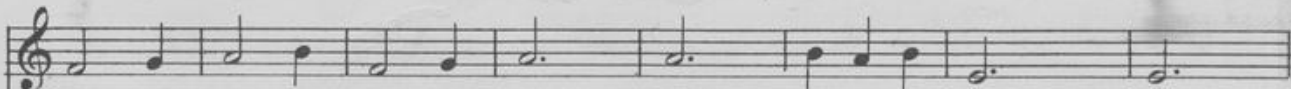
London - England, Francis, Day & Hunter, 138 - 140 Charing Cross Road
Toronto - Canada, Leo. Feist Limited, 193 Yonge Street

Also Published for
Band or Orchestra 25¢

CHORUS



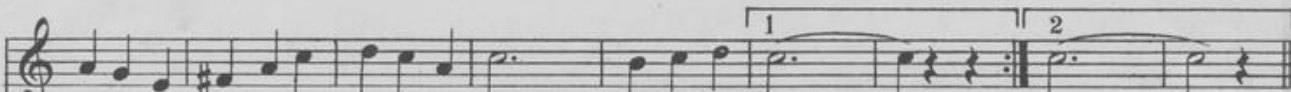
If her eyes are blue as skies, That's Peg-gy O' - Neil, _____



If she's smil - ing all the while, That's Peg-gy O' - Neil, _____



If she walks like a sly lit-tle rogue If she talks with a cute lit-tle brogue, Sweet person-



-al-i-ty full of ras-cal-i-ty, That's Peg-gy O' - Neil. _____ -Neil. _____



Baginco. Must

Lending Library

Brighton, Maine

Donor:

652

PATTER CHORUS

An - nie Roon - ey set a fel - low loon - ey but a mil - lion fel - lows get to

feel - ing spoon - ey when they meet Peg - gy O' - Neil,

There was noth - ing slow with Mol - ly O, but still and all I know that she could

nev - er stand a show with Sweet Peg - gy O' - Neil,

Rose O'-Gra - dy was a per - fect la - dy with a sim - ple win - ning ba - by

smile, Peg - gy is - nt sim - ple that is why she has the oth - er girl - ies beat a

mile, So if you meet a girl whos sweet - er than Be - de - lia, And you feel you want to

say "I'd like to steal yer" That's Peg - gy O' - Neil.

NEW FEIST SONG HITS

ALICE DELYSIA'S *big Song Success*
in the *Paris-London-New York Sensation*
"AFGAR" as presented by *F. Ray Comstock & Morris Gest*

WHY DON'T YOU

By JOSEPH McCARTHY and HARRY TIERNEY writers of "IRENE"

REFRAIN

Why don't you? why are you lone - ly? Why don't you? I want you

no. Oh let your dream eyes dream in mine. With all their

Copyright MCMXXX by LEO FEIST, Inc., Feist Building, New York
International Copyright Secured and Renewed
Ludwig-Herzog, New York Music Pub. Co.
Toronto, Canada, Leo Feist Limited, 193 Yonge St.

PAUL WHITEMAN'S GREAT FOX-TROT
HIT as played by his Famous Ambassador
Orchestra at the "Palais Royal," New York

I NEVER KNEW

(I COULD LOVE ANYBODY LIKE I'M LOVING YOU)
by Tom Pitts, Ray Egan and Roy Marsh revised by Paul Whiteman

CHORUS (Slowly)

I nev - er knew I could love an - y - bod - y. Hon - ey, like I'm

lov - ing you I could - n't re - al - ize what a

Copyright MCMXXX by LEO FEIST, Inc., Feist Building, N.Y.

H.C. 20

OTHER FEIST SONG HITS

UNDERNEATH HAWAIIAN SKIES—Popular Fox Trot
MARIMBA—Novelty Song
APRIL SHOWERS (Bring May Flowers)
THE ROSE I CALL SWEETHEART
NEAR TO YOUR HEART—Byron Gay's Latest
IN THE DAYS OF MAKE BELIEVE
BEELA BOOLA—"Nut" Song with Spanish Flavor
JELLY BEAN—A Comedy Song
HONOLULU EYES—Big Waltz Hit
ROSE OF MY HEART—Sung by John Steel
A YOUNG MAN'S FANCY—Music Box Song
ALICE BLUE GOWN (From Irene)
DOWN IN CHINATOWN—Novelty Fox Trot
JUST LIKE THE ROSE—Melody Fox Trot Song
SWEETHEART BLUES—A Lonesome Melody
I'M IN HEAVEN WHEN I'M IN MY MOTHERS ARMS—Big Ballad Hit
THE BLACKSMITH RAG (With Anvil Chorus)
GIVE ME ALL OF YOU—An Old Favorite
SING ME LOVE'S LULLABY—A Melody Ballad
WHEN YOU LOOK IN THE HEART OF A ROSE I'M A LITTLE NOBODY THAT NOBODY LOVES—Novelty Song of Sentiment
BEYOND THE STARS—Bewitching Fox Trot.
FEATHER YOUR NEST—A Big Hit
GRIEVING FOR YOU—Sung by Al Jolson
I NEVER REALIZED—Big Dance Hit
TWO SWEET LIPS—(The Haunting Fox Trot Tune)
WANG WANG BLUES—Fox Trot as Played on Victor Record No. 18694
TOREADORA—A Spanish Fox Trot
COME AND NESTLE IN YOUR DADDY'S ARMS—Lullaby Fox Trot

ASK YOUR DEALER FOR A COPY OF
"FEIST'S MELODY BALLADS"

—a little booklet that will give you words and music of the choruses of many of the beautiful song hits listed above. If not at your dealer's, send us his name with a two-cent stamp and we will supply you direct.

*Feist Songs on Sale
wherever Music is sold
or we will supply you direct
at 40¢ a Copy, Post Paid.*

Get them for your Piano, Talking Machine and Player Piano.

"You can't go wrong with any Feist song"

Leo. Feist Inc. Feist Bldg New York (CANADA 193 YONGE ST. TORONTO)