

The University of Maine

DigitalCommons@UMaine

---

Vocal Popular Sheet Music Collection

Public domain (may be downloaded in full)

---

1911

## Little Grey Home In The West : Song

Hermann Lohr

*Composer*

D. Eardley-Wilmot

*Lyricist*

Follow this and additional works at: <https://digitalcommons.library.umaine.edu/mmb-vp>

---

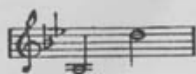
### Recommended Citation

Lohr, Hermann and Eardley-Wilmot, D., "Little Grey Home In The West : Song" (1911). *Vocal Popular Sheet Music Collection*. Score 1006.

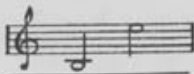
<https://digitalcommons.library.umaine.edu/mmb-vp/1006>

This Book is brought to you for free and open access by DigitalCommons@UMaine. It has been accepted for inclusion in Vocal Popular Sheet Music Collection by an authorized administrator of DigitalCommons@UMaine. For more information, please contact [um.library.technical.services@maine.edu](mailto:um.library.technical.services@maine.edu).

35  
No 1 in Bb



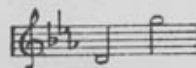
No 2 in C



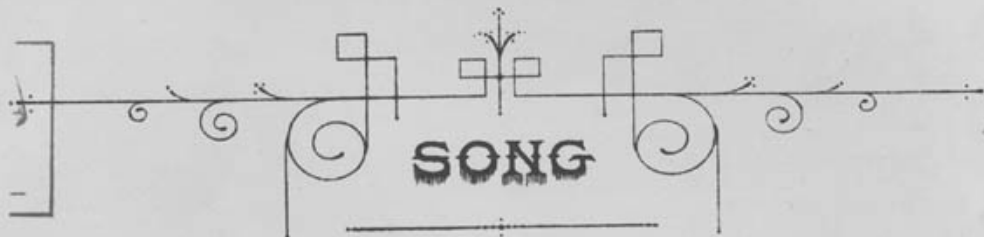
No 3 in Db



No 4 in Eb



# LITTLE GREY HOME IN THE WEST



WORDS BY

D. EARDLEY-WILMOT

MUSIC BY

HERMANN LÖHR

PRICE 60 CENTS

CHAPPELL & CO. LTD  
41 EAST THIRTYFOURTH STREET  
NEW YORK  
TORONTO, 347 YONGE ST.

LONDON

MELBOURNE

THIS SONG MAY BE SUNG IN PUBLIC WITHOUT FEE OR LICENSE EXCEPT AT THEATRES AND MUSIC HALLS  
THE PUBLIC PERFORMANCE OF ANY PARODIED VERSION OF THIS SONG IS STRICTLY PROHIBITED  
THE ADAPTATION OF THIS COMPOSITION TO ANY FORM OF MECHANICAL MUSICAL INSTRUMENT  
EITHER FOR PRIVATE OR PUBLIC PERFORMANCE IS STRICTLY PROHIBITED.

Copyright, mcmxi, by Chappell & Co. Ltd.

M. A. COOK'S VARIETY STORE  
DEXTER, MAINE

Vp. 003229

1911

Lit

# ROSE OF MY HEART.

## SONG.

Words by  
D. EARDLEY WILMOT.

Music by  
HERMANN LÖHR.

*Andante espressivo.*

VOICE. 

PIANO. *p* *cresc.* *mf*  
*Con Ped.*

VOICE. *p*  
It's a long road di -

PIANO. *f* *dim.* *p* *rit.* *a tempo.* *p sostenuto*

VOICE. *mf* *cresc.*  
vides us, Rose — of my heart; — It's a dark night that

PIANO. *mf* *cresc.*

M. A. COOK'S VARIETY STORE  
DEXTER, MAINE

LITTLE GREY HOME IN THE WEST.

When the golden sun sinks in the hills,  
And the toil of a long day is o'er—  
Though the road may be long, in the lilt of a song  
I forget I was weary before.  
Far ahead, where the blue shadows fall,  
I shall come to contentment and rest;  
And the toils of the day will be all charmed away  
In my little grey home of the west.

There are hands that will welcome me in,  
There are lips I am burning to kiss—  
There are two eyes that shine just because they are mine,  
And a thousand things other men miss.  
It's a corner of heaven itself  
Though it's only a tumble-down nest—  
But with love brooding there, why, no place can compare  
With my little grey home in the west.

D. EARDLEY-WILMOT.

# LITTLE GREY HOME IN THE WEST.

## Song.

Words by  
D. EARDLEY-WILMOT.

Music by  
HERMANN LÖHR.

**VOICE.** *Moderato.*

**PIANO.** *mf*

*con 200.*

*mf*

When the gold - en sun sinks in the hills, And the

toil of a long day is o'er Though the

road may be long, in the lilt of a song I for - get I was wear - y be -

*rall.*

*rall.*

- fore — Far a - head, where the blue sha - dows fall — I shall

*a tempo*

*cresc.*

*a tempo*

*mf*

*cresc.*

come to con - tent - ment and rest; And the toils of the day will be

*ten.*

*f*

*f colla voce*

all charmed a - way In my lit - tle grey home of the west. —

*dim.*

*rit - en.*

*a tempo*

*dim.*

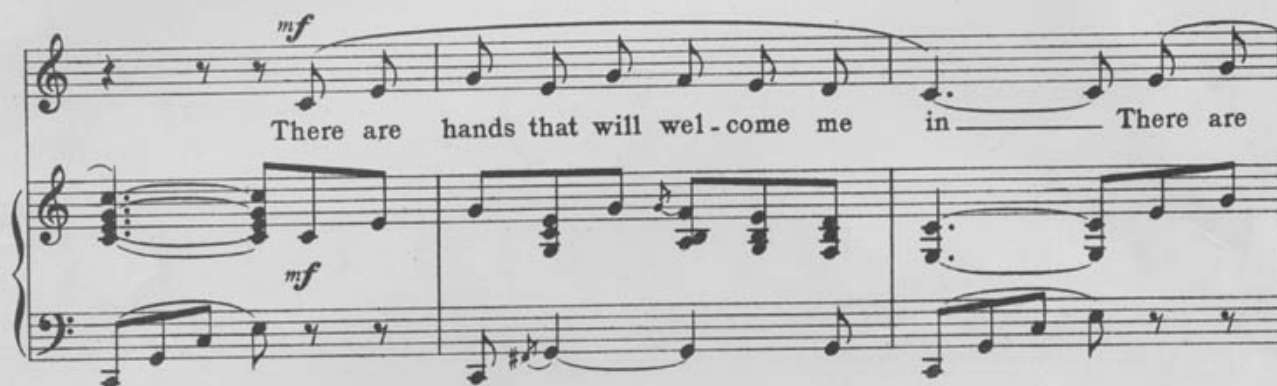
*rit*

*en.*

*a tempo*



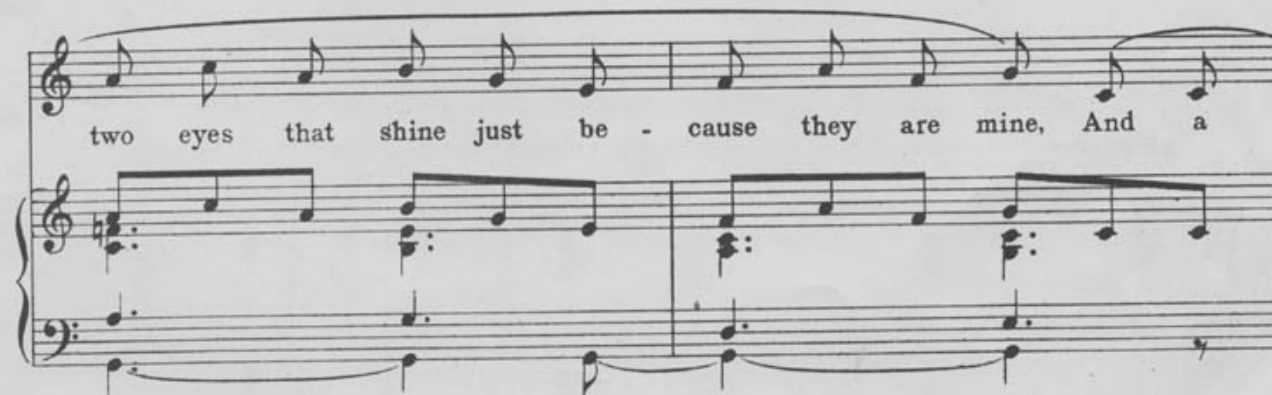
Piano introduction. The right hand plays a series of chords and eighth notes, while the left hand plays a bass line with eighth notes. The tempo is marked *mf*.



There are hands that will wel - come me in \_\_\_\_\_ There are



lips I am burn - ing to kiss \_\_\_\_\_ There are



two eyes that shine just be - cause they are mine, And a



thou - sand things o - ther men miss \_\_\_\_\_ It's a

*cresc.*  
cor - ner of heav - en it - self \_\_\_\_\_ Though it's

on - ly a tum - ble-down nest, But with love brood-ing there, why, no

*dim.* *rall.* *molto*  
place can com-pare With my lit - tle grey home in the west. —



Ms. Wozzmann 25

**THE LATEST SUCCESSFUL SONG CYCLE**

**Songs of the Southern Isles**  
**A Cycle of Four Songs**

Words by Edward Teschemacher

Music by HERMANN LÖHR

[Keys : Low, Medium and High]

Hermann Löhr, one of the most eminently successful composers of English songs, has written nothing more melodious than these "**Songs of the Southern Isles.**" The reason for his immense popularity is not difficult to find, for it is seldom that a composer who writes so well and so correctly can also make his music attractive to the general public.

The melody of "**Star of the South**" is as natural and ingenuous as a folk-song. "**I Dream of a Garden of Sunshine**" is a beautiful reverie in which the voice part, a simple and tender melody, floats above the piano accompaniment and gives the harmonic picture a golden edge.

"**Cyprian Night Song**" has a tinge of languorous Southern passion. It is tranquil on the surface, but there is longing and an echo of sadness in the heart of the singer.

"**When Spring comes to the Islands**" is redolent of the poetry of May. The rich and rippling accompaniment supplies the accents and the vitality, while the vocal melody wells from the singer like the happy carol of a bird.

The great song-loving public has potent reasons for admiring Hermann Löhr. This new cycle, "**Songs of the Southern Isles**" is one of them.

PRICE, \$1.50 NET, COMPLETE

CHAPPELL & CO., Ltd., 41, East 34th Street, New York  
LONDON, TORONTO, AND MELBOURNE