

The University of Maine

DigitalCommons@UMaine

General University of Maine Publications

University of Maine Publications

2010

2010-2011 Ski Trail Map

University of Maine

Follow this and additional works at: https://digitalcommons.library.umaine.edu/univ_publications

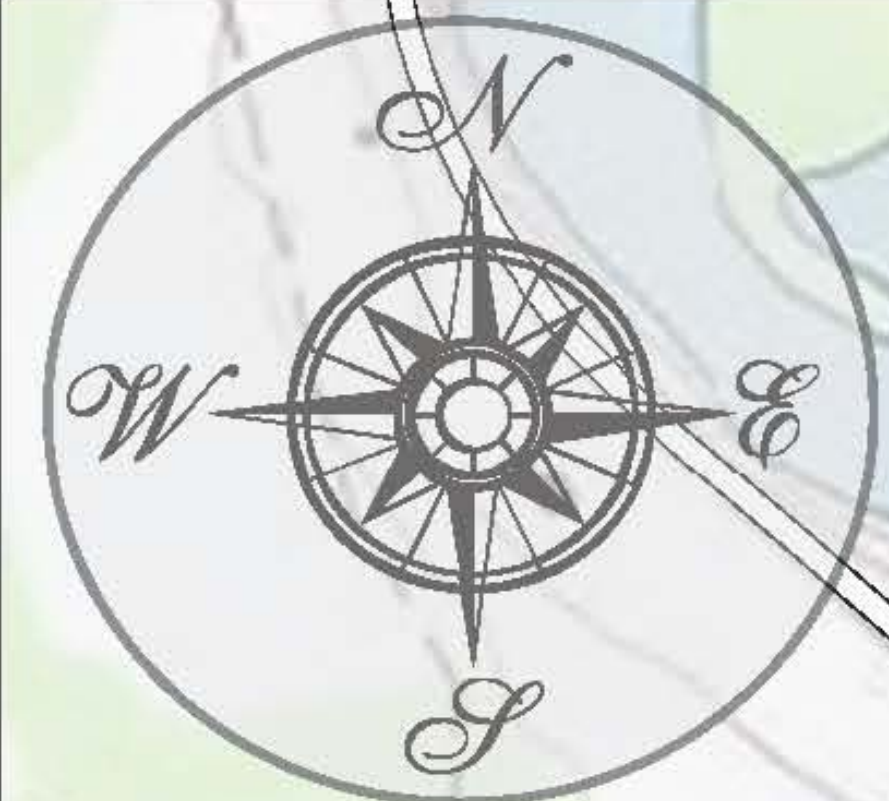


Part of the [Higher Education Commons](#), and the [History Commons](#)

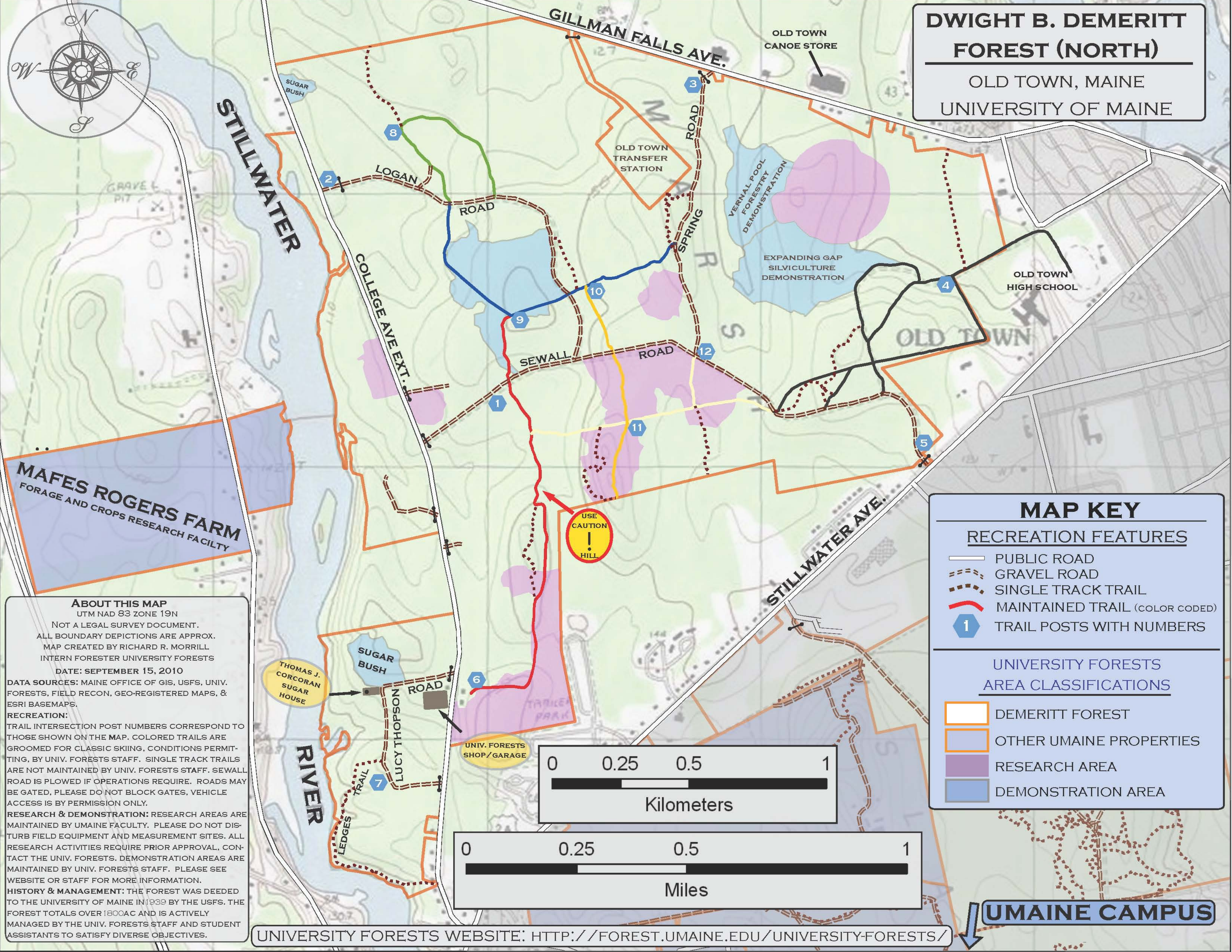
Repository Citation

University of Maine, "2010-2011 Ski Trail Map" (2010). *General University of Maine Publications*. 815.
https://digitalcommons.library.umaine.edu/univ_publications/815

This Map is brought to you for free and open access by DigitalCommons@UMaine. It has been accepted for inclusion in General University of Maine Publications by an authorized administrator of DigitalCommons@UMaine. For more information, please contact um.library.technical.services@maine.edu.



DWIGHT B. DEMERITT FOREST (NORTH)
 OLD TOWN, MAINE
 UNIVERSITY OF MAINE



ABOUT THIS MAP
 UTM NAD 83 ZONE 19N
 NOT A LEGAL SURVEY DOCUMENT.
 ALL BOUNDARY DEPICTIONS ARE APPROX.
 MAP CREATED BY RICHARD R. MORRILL
 INTERN FORESTER UNIVERSITY FORESTS
 DATE: SEPTEMBER 15, 2010
 DATA SOURCES: MAINE OFFICE OF GIS, USFS, UNIV. FORESTS, FIELD RECON, GEO-REGISTERED MAPS, & ESRI BASEMAPS.
 RECREATION:
 TRAIL INTERSECTION POST NUMBERS CORRESPOND TO THOSE SHOWN ON THE MAP. COLORED TRAILS ARE GROOMED FOR CLASSIC SKIING, CONDITIONS PERMITTING, BY UNIV. FORESTS STAFF. SINGLE TRACK TRAILS ARE NOT MAINTAINED BY UNIV. FORESTS STAFF. SEWALL ROAD IS PLOWED IF OPERATIONS REQUIRE. ROADS MAY BE GATED, PLEASE DO NOT BLOCK GATES, VEHICLE ACCESS IS BY PERMISSION ONLY.
 RESEARCH & DEMONSTRATION: RESEARCH AREAS ARE MAINTAINED BY UMAINE FACULTY. PLEASE DO NOT DISTURB FIELD EQUIPMENT AND MEASUREMENT SITES. ALL RESEARCH ACTIVITIES REQUIRE PRIOR APPROVAL, CONTACT THE UNIV. FORESTS. DEMONSTRATION AREAS ARE MAINTAINED BY UNIV. FORESTS STAFF. PLEASE SEE WEBSITE OR STAFF FOR MORE INFORMATION.
 HISTORY & MANAGEMENT: THE FOREST WAS DEEDED TO THE UNIVERSITY OF MAINE IN 1939 BY THE USFS. THE FOREST TOTALS OVER 18000AC AND IS ACTIVELY MANAGED BY THE UNIV. FORESTS STAFF AND STUDENT ASSISTANTS TO SATISFY DIVERSE OBJECTIVES.

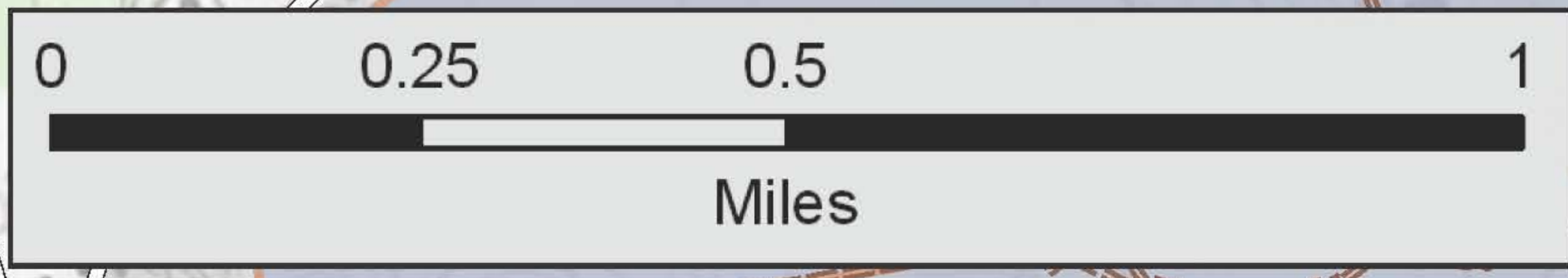
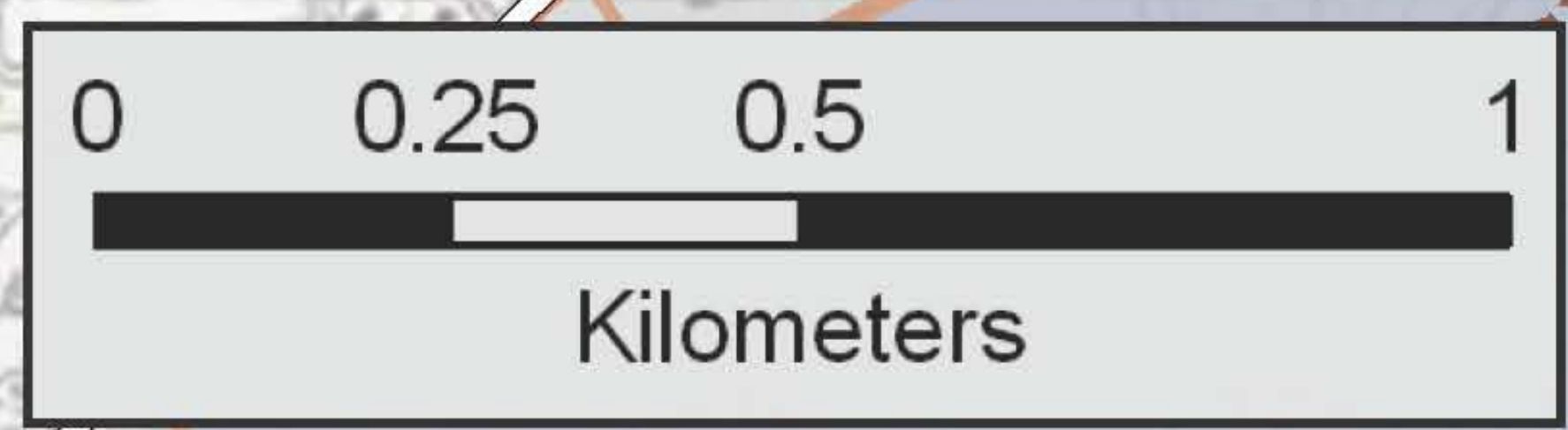
MAP KEY

RECREATION FEATURES

- PUBLIC ROAD
- GRAVEL ROAD
- SINGLE TRACK TRAIL
- MAINTAINED TRAIL (COLOR CODED)
- TRAIL POSTS WITH NUMBERS

UNIVERSITY FORESTS AREA CLASSIFICATIONS

- DEMERITT FOREST
- OTHER UMAINE PROPERTIES
- RESEARCH AREA
- DEMONSTRATION AREA



UNIVERSITY FORESTS WEBSITE: [HTTP://FOREST.UMAINE.EDU/UNIVERSITY-FORESTS/](http://forest.umaine.edu/university-forests/)

UMAINE CAMPUS