

The University of Maine

DigitalCommons@UMaine

Vocal Popular Sheet Music Collection

Public domain (may be downloaded in full)

1918

I'm Glad I Can Make You Cry

Chas. R McCarron

Composer

Carey Morgan

Composer

Starmer

Illustrator

Follow this and additional works at: <https://digitalcommons.library.umaine.edu/mmb-vp>

Recommended Citation

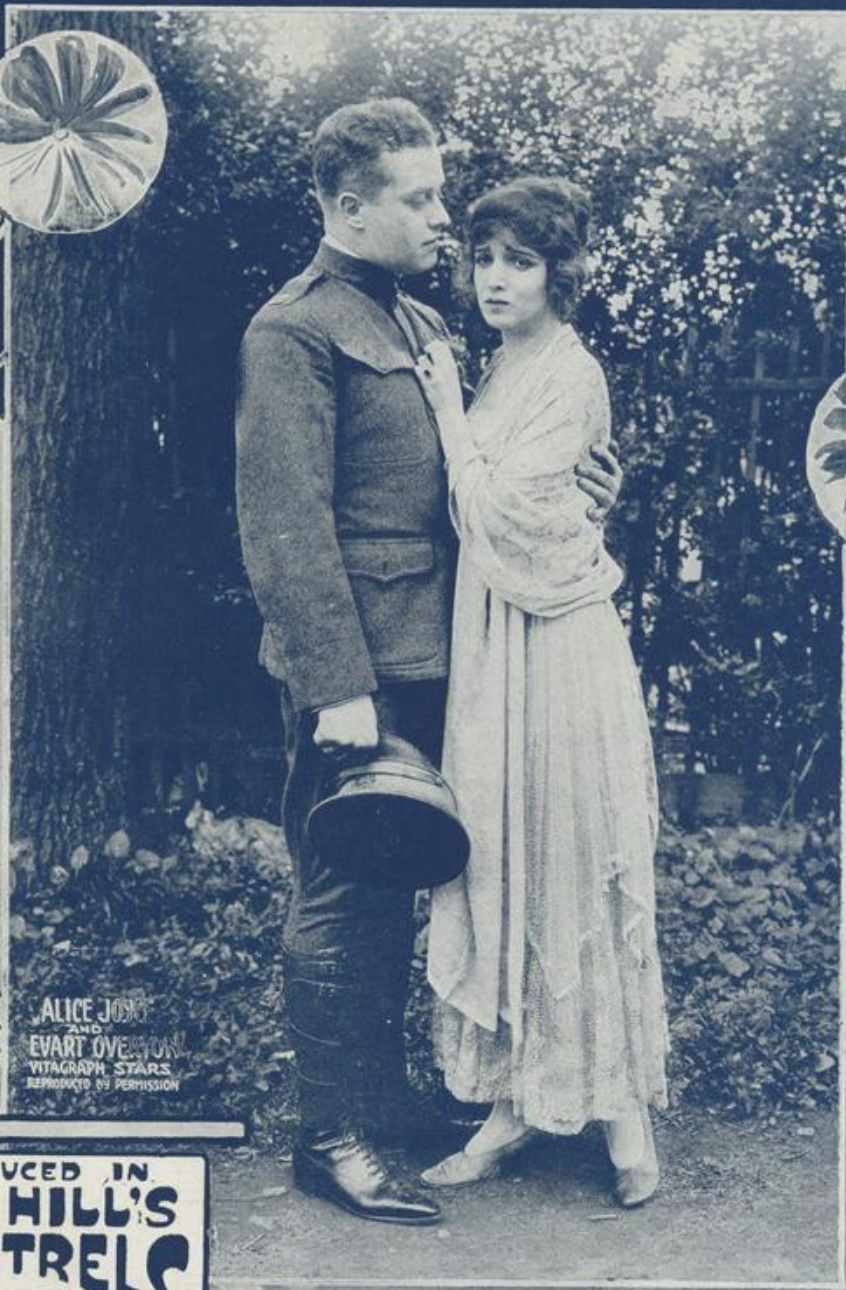
McCarron, Chas. R; Morgan, Carey; and Starmer, "I'm Glad I Can Make You Cry" (1918). *Vocal Popular Sheet Music Collection*. Score 780.

<https://digitalcommons.library.umaine.edu/mmb-vp/780>

This Book is brought to you for free and open access by DigitalCommons@UMaine. It has been accepted for inclusion in Vocal Popular Sheet Music Collection by an authorized administrator of DigitalCommons@UMaine. For more information, please contact um.library.technical.services@maine.edu.

I'M GLAD I CAN MAKE YOU CRY

WORDS AND MUSIC BY
CHAS. R. McCARRON
AND
CAREY MORGAN



ALICE JOY
AND
EVART OVEYON
VITAGRAPH STARS
REPRODUCED BY PERMISSION

SUNG BY



FRED
FREDDY
LYRIC TENOR

INTRODUCED IN
GUS HILL'S
MINSTRELS



Vp002362
1918
I'm

JOS. W. STERN & CO.
102-104 W. 38TH ST. NEW YORK

50¢

STARMER

I'm Glad I Can Make You Cry

Words and Music by
CHAS. R. M^cCARRON
& CAREY MORGAN

Piano

Valse moderato

f *rall.*

The piano introduction is in 3/4 time, key of D major. It begins with a forte (*f*) dynamic and concludes with a *rallentando* (*rall.*) marking. The melody is primarily in the right hand, with a supporting bass line in the left hand.

Just like a ba-by you're cry - ing, Just like a ba-by you're try - ing,
Dear, when your tear-drops are fall - ing, My heart your heart - is call - ing,

p

The first vocal line is in 3/4 time, key of D major. The piano accompaniment is in 3/4 time, key of D major, with a piano (*p*) dynamic. The piano part features a steady accompaniment with some grace notes.

Try - ing to tell me in your ba - by way, That you don't love me an - y more,
Come let me hold you in my lov - ing arms, Ho - ney, don't be blue an - y more,

The second vocal line continues in 3/4 time, key of D major. The piano accompaniment is in 3/4 time, key of D major, with a piano (*p*) dynamic. The piano part features a steady accompaniment with some grace notes.

You saw me flirt with an - o - ther, And you ex - pect me to say _____
You ought to know that I love you, And that my love will en - dure _____

The third vocal line continues in 3/4 time, key of D major. The piano accompaniment is in 3/4 time, key of D major, with a piano (*p*) dynamic. The piano part features a steady accompaniment with some grace notes.

Copyright MCMXVIII by Jos. W. Stern & Co. New York

British Copyright secured

English Theatre and Music Hall rights strictly reserved

Depositado conforme con las Leyes de los Países de Sud y Central America y Mexico

Depositado en el año MCMXVIII por Jos. W. Stern y Cia., Proprietarios Nueva York

I'm sor-ry, dear, So sor-ry, dear, But some-how I don't feel that way.
 I'm hap-py dear, So hap-py dear, I'm hap-py be-cause you're not sure.

Chorus

I'm glad that I can make you blue, I'm glad that I can wor-ry you,

I'm glad that I can make you grieve, Your jea-lous-y is sweet to me,

Some-times I flirt to make you mad, And when you're hurt it makes me glad, It proves that you

love me when you sigh, I'm glad I can make you cry. 1 cry. 2 cry.

rall.

The Waltz Beautiful.

Kentucky Dream

WALTZ

By S. R. Henry & D. Onivas
Composers of "INDIANOLA" "BY HECK" etc



Kentucky Dream
WALTZ

Waltz tempo moderato

Copyright MCMXVIII by Joe W. Stern & Co., New York
British Copyright secured

Complete Copies on Sale at all music dealers
or sent direct by the publishers
on receipt of 30 cents

Jos. W. Stern & Co. 102-104 W. 38th St. New York