

2011

Town of Orrington Land Use Map

Orrington (Me.)

Amy Quist

Louis Morin

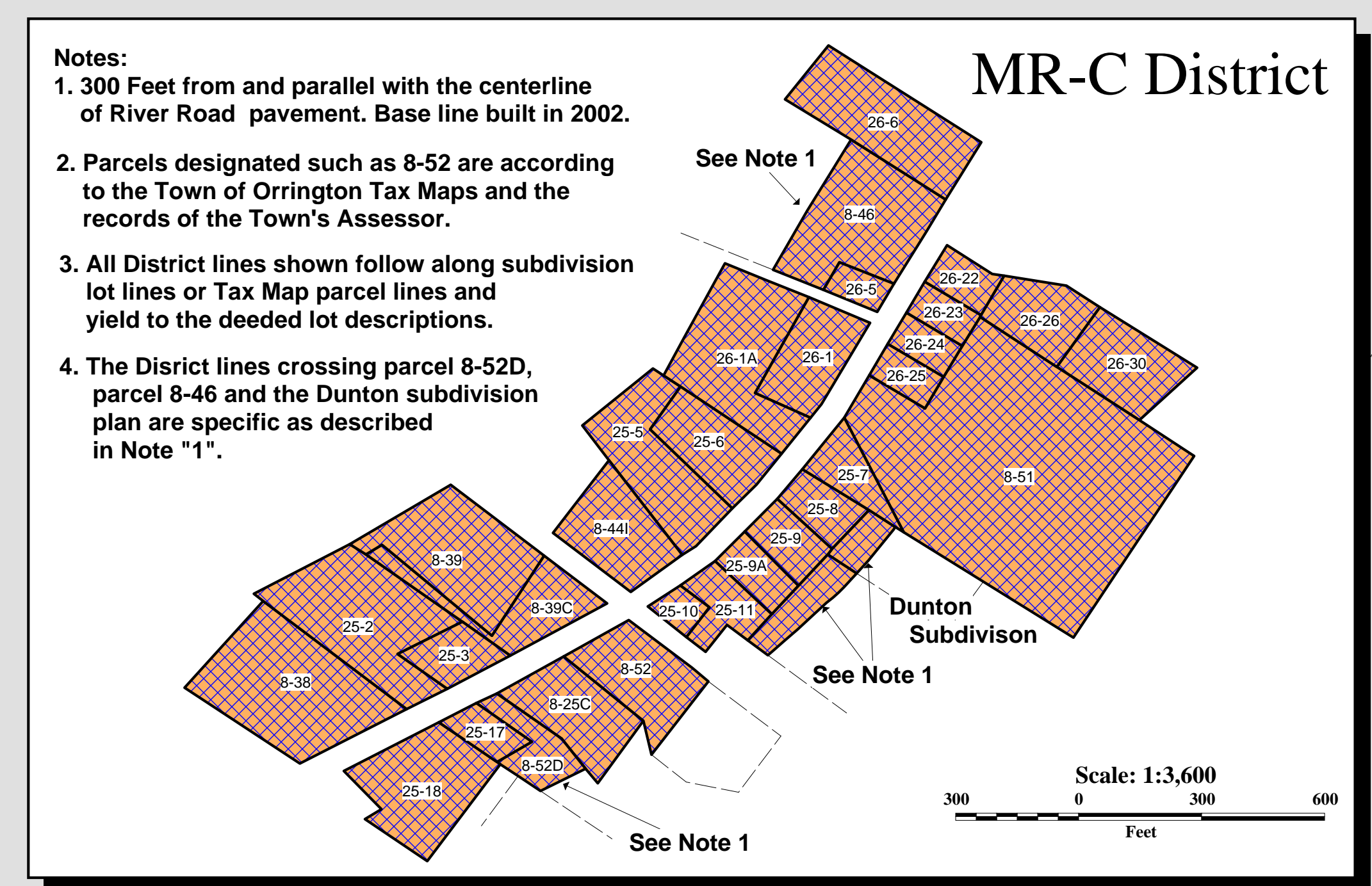
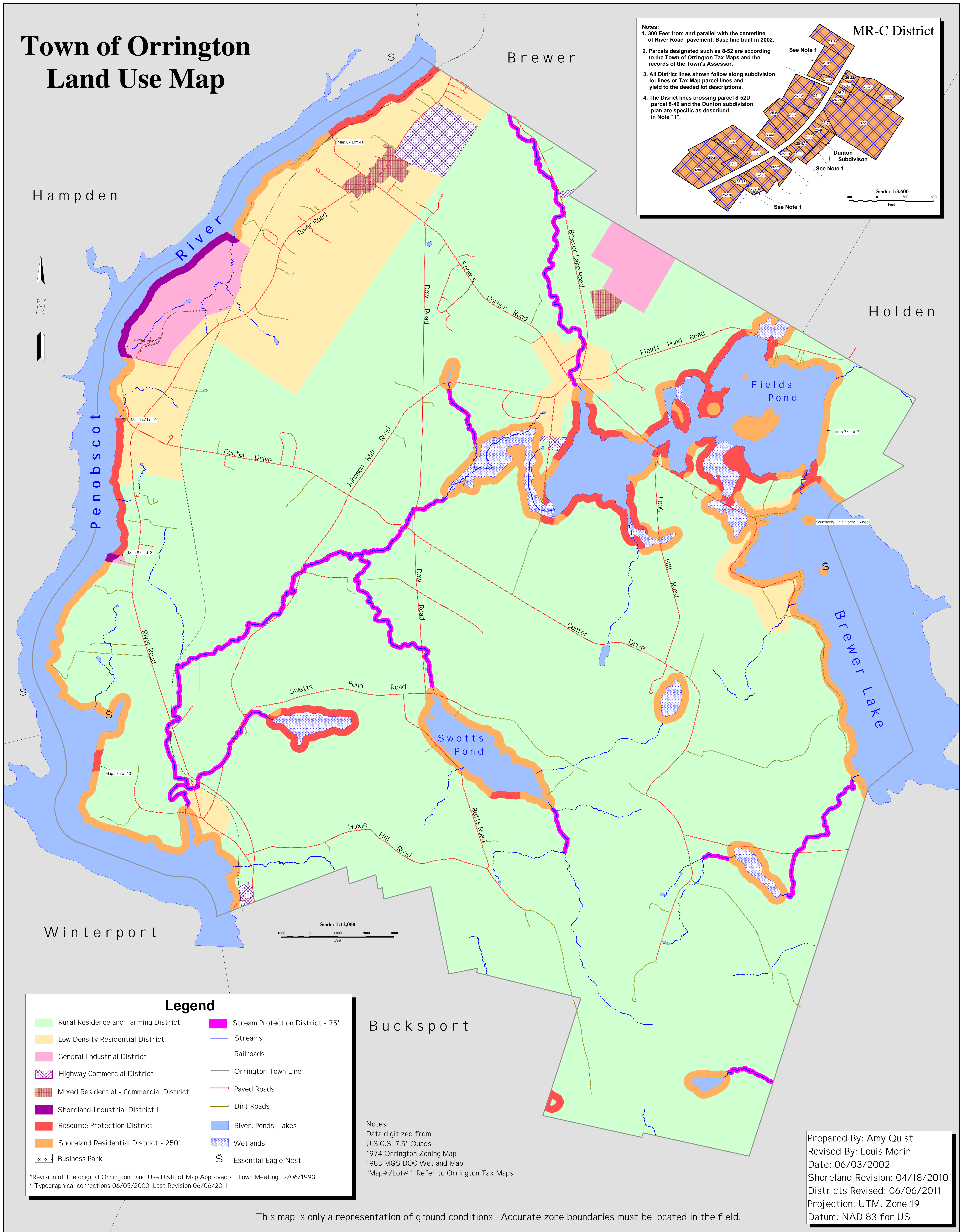
Follow this and additional works at: <https://digitalcommons.library.umaine.edu/towndocs>

Repository Citation

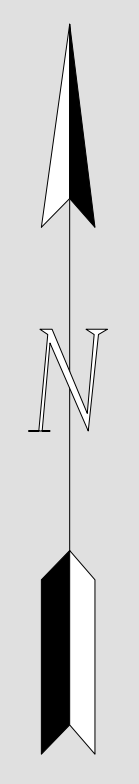
Orrington (Me.); Quist, Amy; and Morin, Louis, "Town of Orrington Land Use Map" (2011). *Maine Town Documents*. 643.
<https://digitalcommons.library.umaine.edu/towndocs/643>

This Map is brought to you for free and open access by DigitalCommons@UMaine. It has been accepted for inclusion in Maine Town Documents by an authorized administrator of DigitalCommons@UMaine. For more information, please contact um.library.technical.services@maine.edu.

Town of Orrington Land Use Map



- Notes:
1. 300 Feet from and parallel with the centerline of River Road pavement. Base line built in 2002.
 2. Parcels designated such as 8-52 are according to the Town of Orrington Tax Maps and the records of the Town's Assessor.
 3. All District lines shown follow along subdivision lot lines or Tax Map parcel lines and yield to the deeded lot descriptions.
 4. The District lines crossing parcel 8-52D, parcel 8-46 and the Dunton subdivision plan are specific as described in Note "1".



Legend

- | | |
|--|--|
| Rural Residence and Farming District | Stream Protection District - 75' |
| Low Density Residential District | Streams |
| General Industrial District | Railroads |
| Highway Commercial District | Orrington Town Line |
| Mixed Residential - Commercial District | Paved Roads |
| Shoreland Industrial District I | Dirt Roads |
| Resource Protection District | River, Ponds, Lakes |
| Shoreland Residential District - 250' | Wetlands |
| Business Park | Essential Eagle Nest |

Notes:
 Data digitized from:
 U.S.G.S. 7.5' Quads
 1974 Orrington Zoning Map
 1983 MGS DOC Wetland Map
 "Map#/Lot#" Refer to Orrington Tax Maps

Prepared By: Amy Quist
 Revised By: Louis Morin
 Date: 06/03/2002
 Shoreland Revision: 04/18/2010
 Districts Revised: 06/06/2011
 Projection: UTM, Zone 19
 Datum: NAD 83 for US

*Revision of the original Orrington Land Use District Map Approved at Town Meeting 12/06/1993
 * Typographical corrections 06/05/2000, Last Revision 06/06/2011

This map is only a representation of ground conditions. Accurate zone boundaries must be located in the field.