

2009

# Town of Holden, Maine Zoning Map

James W. Sewall Company

Follow this and additional works at: <https://digitalcommons.library.umaine.edu/towndocs>

---

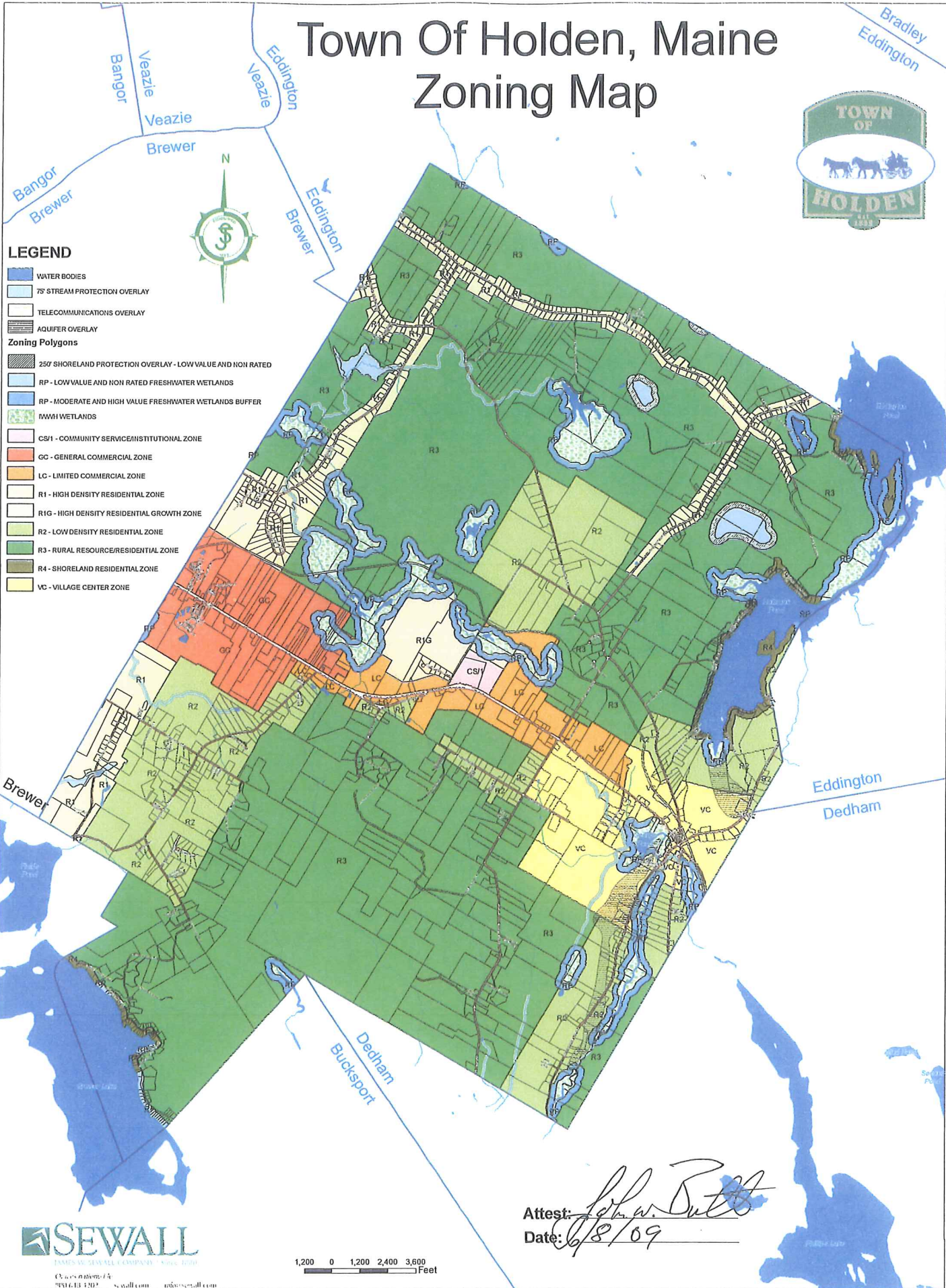
## Repository Citation

James W. Sewall Company, "Town of Holden, Maine Zoning Map" (2009). *Maine Town Documents*. 495.  
<https://digitalcommons.library.umaine.edu/towndocs/495>

This Map is brought to you for free and open access by DigitalCommons@UMaine. It has been accepted for inclusion in Maine Town Documents by an authorized administrator of DigitalCommons@UMaine. For more information, please contact [um.library.technical.services@maine.edu](mailto:um.library.technical.services@maine.edu).

# Town Of Holden, Maine Zoning Map

Bradley  
Eddington

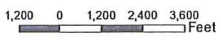


## LEGEND

- WATER BODIES
- 75' STREAM PROTECTION OVERLAY
- TELECOMMUNICATIONS OVERLAY
- AQUIFER OVERLAY
- Zoning Polygons**
- 250' SHORELAND PROTECTION OVERLAY - LOW VALUE AND NON RATED
- RP - LOW VALUE AND NON RATED FRESHWATER WETLANDS
- RP - MODERATE AND HIGH VALUE FRESHWATER WETLANDS BUFFER
- MWH WETLANDS
- CS1 - COMMUNITY SERVICE/INSTITUTIONAL ZONE
- GC - GENERAL COMMERCIAL ZONE
- LC - LIMITED COMMERCIAL ZONE
- R1 - HIGH DENSITY RESIDENTIAL ZONE
- R1G - HIGH DENSITY RESIDENTIAL GROWTH ZONE
- R2 - LOW DENSITY RESIDENTIAL ZONE
- R3 - RURAL RESOURCE/RESIDENTIAL ZONE
- R4 - SHORELAND RESIDENTIAL ZONE
- VC - VILLAGE CENTER ZONE



Attest: *John W. Tuttle*  
Date: 6/8/09



190 G. B. 1302 Sewall.com info@sewall.com