

The University of Maine

DigitalCommons@UMaine

Vocal Popular Sheet Music Collection

Public domain (may be downloaded in full)

1922

I'm A Wand'rin'! : Old Slave Song

Samuel Richards Gaines

Composer

Follow this and additional works at: <https://digitalcommons.library.umaine.edu/mmb-vp>

Recommended Citation

Gaines, Samuel Richards, "I'm A Wand'rin'! : Old Slave Song" (1922). *Vocal Popular Sheet Music Collection*. Score 576.

<https://digitalcommons.library.umaine.edu/mmb-vp/576>

This Book is brought to you for free and open access by DigitalCommons@UMaine. It has been accepted for inclusion in Vocal Popular Sheet Music Collection by an authorized administrator of DigitalCommons@UMaine. For more information, please contact um.library.technical.services@maine.edu.

40 CENTS NET

I 5

Low Voice, Key C Range c-E

High Voice, Key Eb Range E-g

As Sung by the Distinguished American Tenor

Frederick Gunster.

I'M A WAND'RIN'!

Old Slave Song

WORDS AND MUSIC BY

SAMUEL RICHARDS GAINES

Price 60 Cents



FREDERICK GUNSTER

In his Impersonation of the ante-bellum negro.

ALSO PUBLISHED IN THE FOLLOWING FORMS

- Four-Part Song for Mixed Voices .12
- Four-Part Song for Men's Voices .12
- Four-Part Song for Women's Voices .12



WHITE-SMITH MUSIC PUBLISHING COMPANY


BOSTON

NEW YORK

CHICAGO

Made in U. S. A.

Bagaduce Music 
 Lending Library
 Brooksville, Maine
 Donor: 197 Coll: 

Up. 002464
 1922
 I'm 

In memory of The Great Emancipator
ABRAHAM LINCOLN

*) I'M A WAND'RIN'!

Old Slave Song



Words and Music by
Samuel Richards Gaines

Sadly

VOICE *p*

I'm a wand-'rin'— down de hill-side,—

PIANO *p*

And I'm pray-in'— Some-day I'll be free; Winds am sigh-in'—

and a'mean-in',— Like dat feel-in'— down in-side ob me!

pp

*) Also Arranged as a Four-Part Song for
Mixed, Men's and Women's Voices

Fo' de Lawd He stands dere at de Doh! An' He's cal - lin' me for - ev - er - moh! —

The first system consists of a vocal line on a single staff and a piano accompaniment on two staves. The vocal line begins with a half note 'Fo' de Lawd' and continues with a melodic line. The piano accompaniment features a steady eighth-note bass line and chords in the right hand.

marcato *f* *mf*

The second system continues the piano accompaniment. It includes dynamic markings: *marcato* in the first measure, *f* in the second, and *mf* in the third. The tempo and dynamics change in the final measure, marked with a 6/4 time signature.

(alternate) *p*

O! I'm a wand-rin' — down de hill-side, — And I'm pray-in' —

a tempo

p rit.

The third system features an alternate vocal line starting with 'O!' and 'I'm a wand-rin' — down de hill-side, — And I'm pray-in' —'. The piano accompaniment includes a *p* dynamic and a *rit.* (ritardando) marking. The system concludes with a 6/4 time signature.

Someday I'll be free; Winds am sigh-in'— And a'moan-in'— And a'moan-in'—

ff *p ten.*

The first system consists of a vocal line and piano accompaniment. The vocal line begins with a melodic phrase, followed by a rest, then a phrase marked *ff* (fortissimo), and finally a phrase marked *p ten.* (piano, tenuto). The piano accompaniment features a complex texture with many chords and moving lines in both hands.

Like dat feel-in' down in - side ob me! _____

with great breadth

The second system continues the vocal line with the lyrics "Like dat feel-in' down in - side ob me!". The piano accompaniment includes a section marked "with great breadth" where the piano part has a more spacious feel.

pp e ritmo.

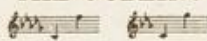
Down in-side ob me!

poco rit. *pp e ritmo.*

*Red. **

The third system features the vocal line with the lyrics "Down in-side ob me!". The piano accompaniment includes markings for *pp e ritmo.* (pianissimo, with rhythm) and *poco rit.* (poco ritardando). The system concludes with a *Red. ** (Reduction) symbol.

THE GOBLINS



GEORGE B CARPENTER

GERTRUDE ROSS

Tempo rubato e misterioso

VOICE

1 Did yo' eb er see how do
2. When de bees don't buzz as dey
3. Or also in de night when dar

PIANO

old elm tree Will shako when dar ain't no wind? When de
al-ways does, When dar ain't no witch - es near, An' de
ain't no light An' yo' wake up - all a lone, An'

birds don't sing an' de gale won't swing An' yo' ap ron comes un-
ronn' black eyes ob de drag on flies Look at yo' sert o'
right o-ber dere un-der-neath dat chair Is a black ting gnawin' a

Copyright, 1922, by White-Smith Music Publishing Co.
International Copyright Secured

A ROUNDUP LULLABY



CHARLES BADGER CLARK, JR.

GERTRUDE ROSS

Moderato

VOICE

PIANO

In a dreamy, lulling manner

Deu - ert blue and sil - ver in the still moon - shine,
Coy - ote yappin' la sy on the hill, Sleep - y winks of light - ni'down the
far sky line, Time for mil - lin' cat - tie to be still.

Writn by yrethms

Copyright, 1922, by White-Smith Music Publishing Co.
International Copyright Secured

The Love-Moon

Réverie



LILIAN MIDDLETON

ERNEST HARRY ADAMS

Slowly, with wistful tenderness

VOICE

You do not know how

PIANO

I should love to walk The lit - tle wood - sy path at eve with you,

Where ghost - ly flow - ers tol - ter, white as chalk

Copyright, 1922, by White-Smith Music Publishing Co.
International Copyright Secured

'Tell Her My Lodge is Warm



CHARLES O. ROOS

CHARLES WAKEFIELD GADMAN
Op. 76

Not too slow, with spirit

VOICE

Far to the East where the

PIANO

Car - l - bou food; Far to the West, and the Sea; Men tell of my To - tem of
blue and red Carved from a co - dar tree. Point my

con espresso, poco rall. *a tempo*
poco rall. *a tempo*

* Based upon four measures of an Opikway melody obtained by Frederick Barton

Copyright, 1922, by White-Smith Music Publishing Co.
International Copyright Secured