

The University of Maine

DigitalCommons@UMaine

General University of Maine Publications

University of Maine Publications

2-27-2006

Summary of Spring 2006 Enrollments

University Of Maine System

Follow this and additional works at: https://digitalcommons.library.umaine.edu/univ_publications



Part of the [Higher Education Commons](#), and the [History Commons](#)

This Report is brought to you for free and open access by DigitalCommons@UMaine. It has been accepted for inclusion in General University of Maine Publications by an authorized administrator of DigitalCommons@UMaine. For more information, please contact um.library.technical.services@maine.edu.

SUMMARY OF SPRING 2006 ENROLLMENTS

February 27, 2006



*Maine's
Public
Universities*

UNIVERSITY OF MAINE SYSTEM

SUMMARY OF SPRING 2006 ENROLLMENTS

INTRODUCTION

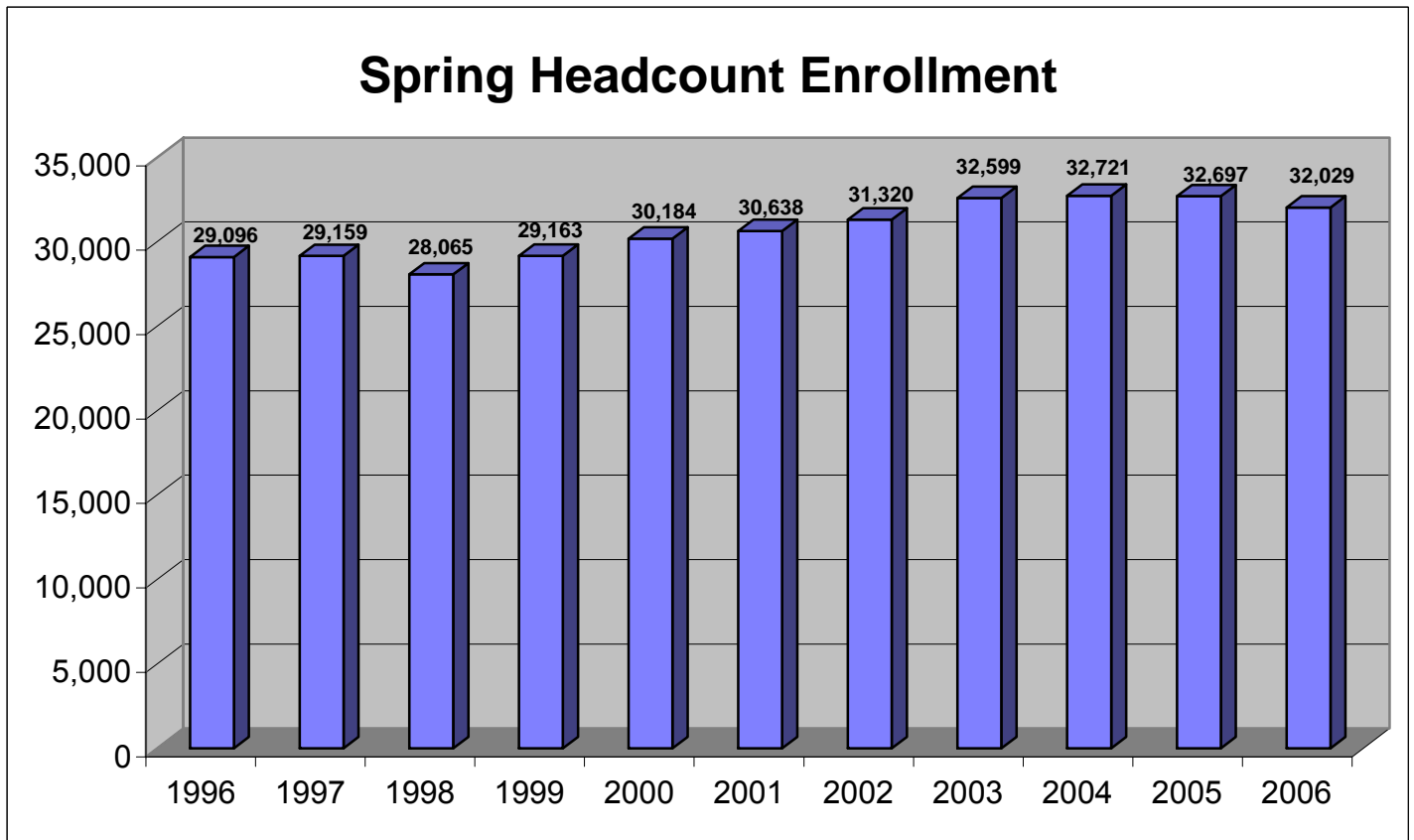
This report provides summary information regarding University enrollments. The tables and graphs show enrollments for the past 11 years, i.e., 1996-2006.

TABLE OF CONTENTS

	<u>PAGE</u>
Highlights	1
By Headcount	2-4
By FTE (Full-time Equivalent)	5-7
By Change in Semester Enrollment	8-9
By Residence	10-11
By Gender	12-13
Full-Time/Part-Time	14-15
By Degree Level	16
By Degree Level by University	17
First-time First-year & Transfer Students	18
By County of Residence	19-21
By State of Residence	22
By Country of Residence	23
Distance Learning	24

HIGHLIGHTS

- **For the fourth year in a row, spring headcount enrollment within the University of Maine System exceeds 32,000 students.**
- **Headcount enrollment for Spring 2006 is 32,029 students, a decrease of 2% from spring 2005. Compared to last spring, the number of full-time students is up by 86 and the number of part-time students is down by 754. There are 19,975 women who make up 62.4% of the student body and 12,054 men, which account for the other 37.6%.**
- **Spring FTE enrollment continues to remain over 22,000, with FTE enrollment at 22,662, only 92 FTE students (0.4% annual decrease) shy of last springs all-time high of 22,754. For this academic year, spring FTE enrollment was 93% of fall FTE enrollment.**
- **Students who are Maine residents number 28,161, 88% of total enrollment. In-state enrollment decreased by 640 students and out-of-state enrollment decreased by 28 students. International students (972) decreased by 58 students and represent 3% of the student body.**
- **Every county in Maine sends at least 350 students to the University of Maine System. The largest numbers come from Cumberland (5,671), Penobscot (4,442), and Kennebec (3,089).**
- **Students come from all but four states in the country, plus the District of Columbia. A total of 55.5% of out-of-state students (excluding international students) come from the other New England states. Massachusetts alone accounts for 22.6% of students coming from other states.**
- **There are a total of 3,259 students enrolled in distance learning courses in Spring 2006, down 6.8% from 3,499 students in Spring 2005. Distance learning credits were 13,827 compared to 14,592 in Spring 2005 (a decrease of 5.2%). About 73%, or 2,377 students, are only enrolled in distance learning courses.**

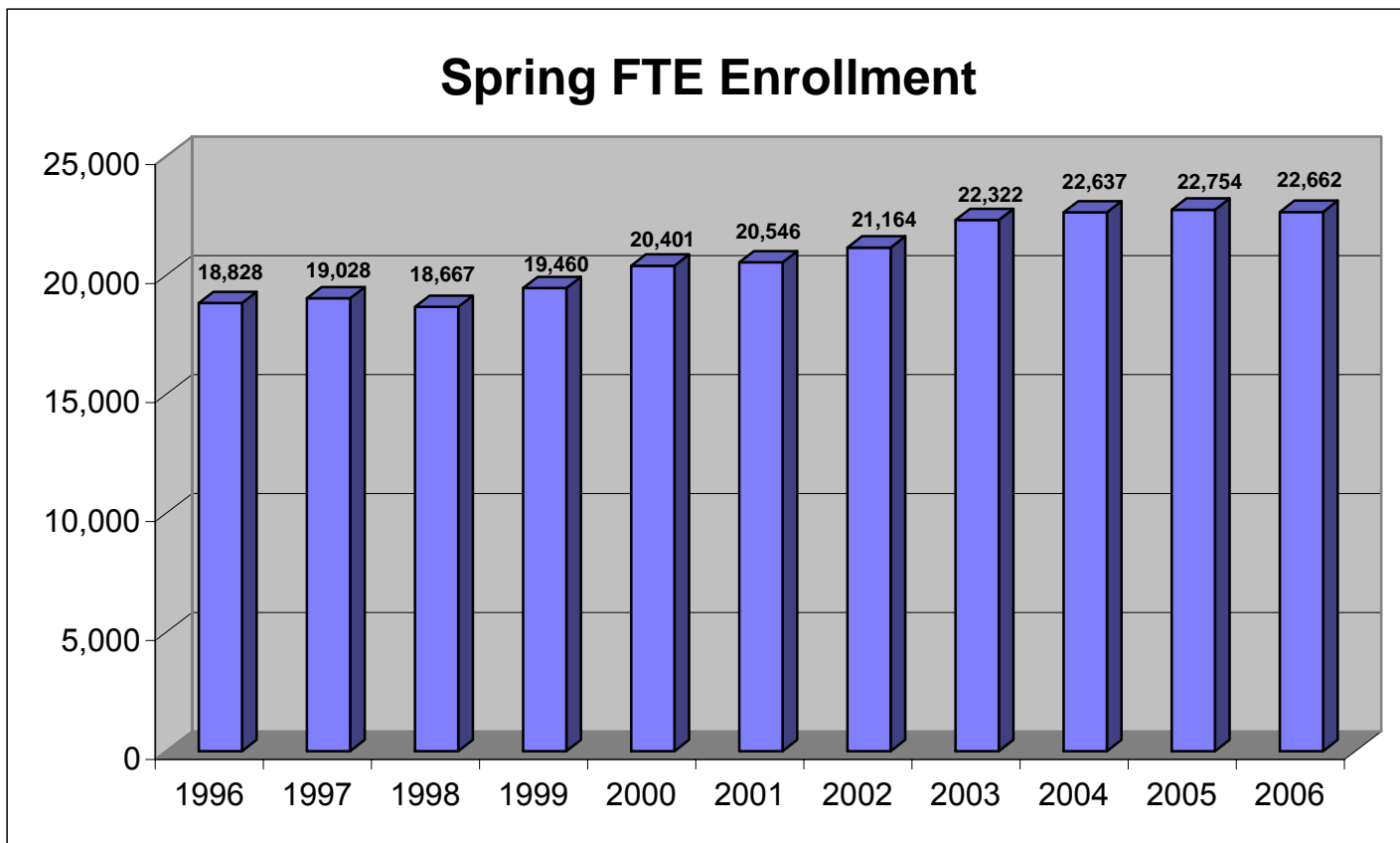


SPRING HEADCOUNT ENROLLMENT
(2002- 2006)

	<u>2002</u>	<u>2003</u>	<u>2004</u>	<u>2005</u>	<u>2006</u>	CHANGE FROM 2005 TO 2006	
						<u>#</u>	<u>%</u>
UM	10,274	10,906	10,875	10,773	10,795	22	0.2
UMA	5,544	5,662	5,655	5,632	5,193	(439)	(7.8)
UMF	2,256	2,273	2,272	2,207	2,346	139	6.3
UMFK	698	756	942	1,082	1,144	62	5.7
UMM	960	1,137	1,234	1,234	1,111	(123)	(10.0)
UMPI	1,278	1,397	1,427	1,486	1,495	9	0.6
USM	<u>10,310</u>	<u>10,468</u>	<u>10,316</u>	<u>10,283</u>	<u>9,945</u>	<u>(338)</u>	<u>(3.3)</u>
TOTAL	<u>31,320</u>	<u>32,599</u>	<u>32,721</u>	<u>32,697</u>	<u>32,029</u>	<u>(668)</u>	<u>(2.0)</u>

SPRING HEADCOUNT ENROLLMENT
(1996 - 2001)

	<u>1996</u>	<u>1997</u>	<u>1998</u>	<u>1999</u>	<u>2000</u>	<u>2001</u>
UM	9,348	9,185	8,818	9,036	9,479	9,863
UMA	5,583	5,233	4,778	5,281	5,468	5,434
UMF	2,328	2,338	2,299	2,364	2,347	2,283
UMFK	661	760	731	712	833	814
UMM	858	956	848	874	908	880
UMPI	1,242	1,319	1,206	1,256	1,367	1,287
USM	<u>9,076</u>	<u>9,368</u>	<u>9,385</u>	<u>9,640</u>	<u>9,782</u>	<u>10,077</u>
TOTAL	<u><u>29,096</u></u>	<u><u>29,159</u></u>	<u><u>28,065</u></u>	<u><u>29,163</u></u>	<u><u>30,184</u></u>	<u><u>30,638</u></u>



SPRING FTE ENROLLMENT*
(2002- 2006)

	<u>2002</u>	<u>2003</u>	<u>2004</u>	<u>2005</u>	<u>2006</u>	CHANGE FROM 2005 TO 2006	
						<u>#</u>	<u>%</u>
UM	8,035	8,517	8,532	8,544	8,672	129	1.5
UMA	2,622	2,755	2,795	2,811	2,610	(201)	(7.2)
UMF	1,977	1,952	1,986	1,937	2,027	90	4.7
UMFK	560	625	750	830	815	(15)	(1.8)
UMM	636	690	719	664	607	(57)	(8.5)
UMPI	941	1,050	1,094	1,159	1,146	(13)	(1.1)
USM	<u>6,394</u>	<u>6,733</u>	<u>6,761</u>	<u>6,810</u>	<u>6,785</u>	<u>(25)</u>	<u>(0.4)</u>
TOTAL	<u>21,164</u>	<u>22,322</u>	<u>22,637</u>	<u>22,754</u>	<u>22,662</u>	<u>(92)</u>	<u>(0.4)</u>

* The formula for calculating FTE is as follows:

Undergraduate Credit Hours/15 + Professional (Law) Credit Hours/15 +
Graduate Credit Hours/9 = FTE

Totals may not add to detail due to rounding

SPRING FTE ENROLLMENT*
(1996 - 2001)

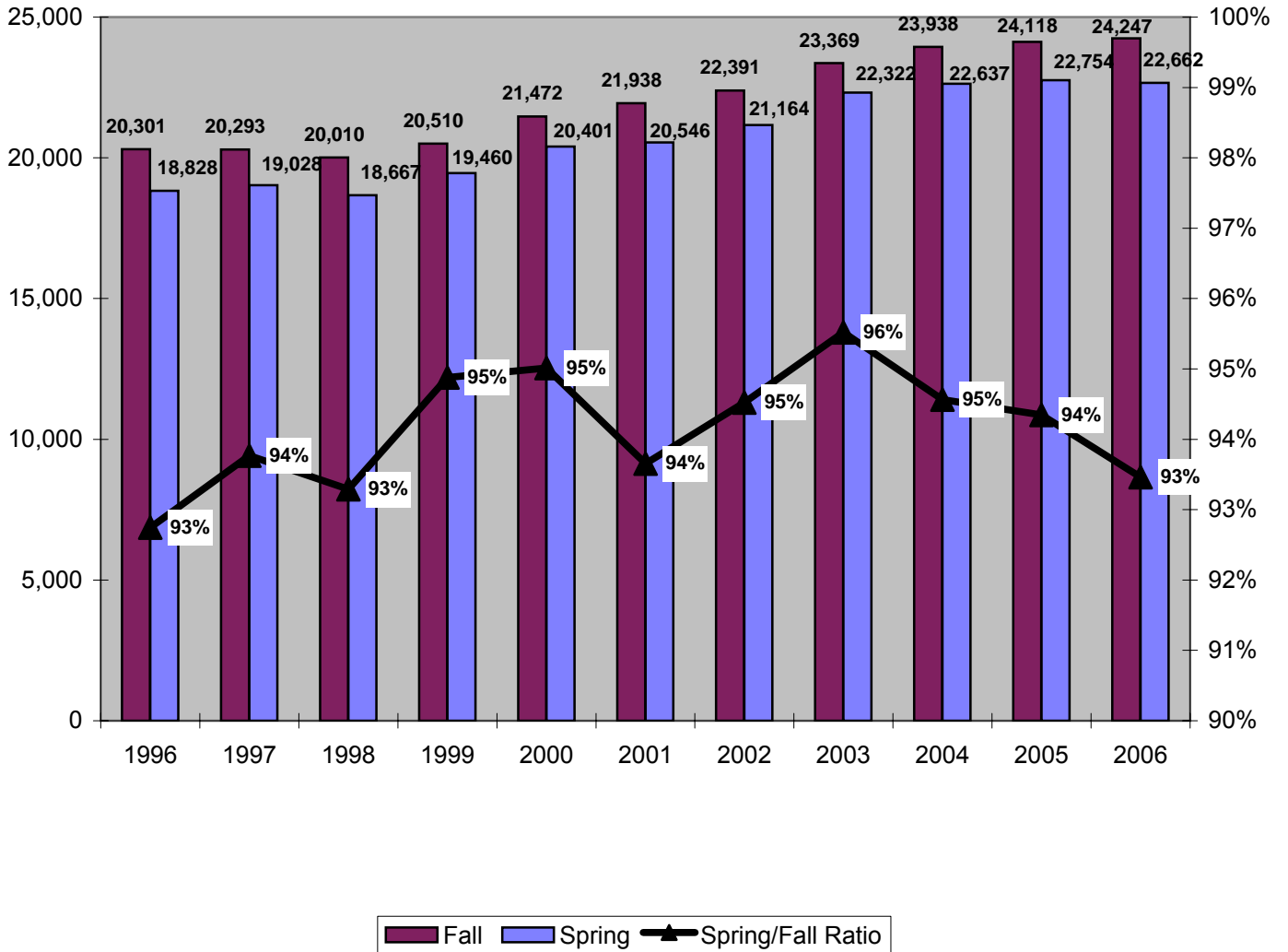
	<u>1996</u>	<u>1997</u>	<u>1998</u>	<u>1999</u>	<u>2000</u>	<u>2001</u>
UM	7,007	7,018	6,803	6,995	7,378	7,648
UMA	2,514	2,383	2,191	2,478	2,664	2,577
UMF	1,899	1,918	1,914	1,994	2,014	1,968
UMFK	445	506	470	538	686	626
UMM	609	642	599	607	584	571
UMPI	974	1,002	938	963	1,038	1,000
USM	<u>5,380</u>	<u>5,559</u>	<u>5,752</u>	<u>5,886</u>	<u>6,036</u>	<u>6,157</u>
TOTAL	<u>18,828</u>	<u>19,028</u>	<u>18,667</u>	<u>19,460</u>	<u>20,401</u>	<u>20,546</u>

* The formula for calculating FTE is as follows:

$$\text{Undergraduate Credit Hours}/15 + \text{Professional (Law) Credit Hours}/15 + \text{Graduate Credit Hours}/9 = \text{FTE}$$

Totals may not add to detail due to rounding

CHANGE IN SEMESTER FTE ENROLLMENT 1996 - 2006



FALL-TO-SPRING FTE ENROLLMENT*
(1996 - 2006)**

	1996	1997	1998	1999	2000	2001	2002	2003	2004	2005	2006
UM											
Fall	7,583	7,508	7,156	7,356	7,719	7,980	8,335	8,665	8,923	9,054	9,204
Spring	7,007	7,018	6,803	6,995	7,378	7,648	8,035	8,517	8,532	8,544	8,672
Difference	576	490	353	361	341	332	300	148	391	511	532
Ratio	92.4%	93.5%	95.1%	95.1%	95.6%	95.8%	96.4%	98.3%	95.6%	94.4%	94.2%
UMA											
Fall	2,719	2,488	2,398	2,419	2,736	2,706	2,690	2,769	2,936	2,806	2,759
Spring	2,514	2,383	2,191	2,478	2,664	2,577	2,622	2,755	2,795	2,811	2,610
Difference	205	105	207	(59)	72	129	68	14	141	(5)	149
Ratio	92.5%	95.8%	91.4%	102.4%	97.4%	95.2%	97.5%	99.5%	95.2%	100.2%	94.6%
UMF											
Fall	2,048	2,070	2,024	2,084	2,105	2,123	2,117	2,093	2,116	2,087	2,149
Spring	1,899	1,918	1,914	1,994	2,014	1,968	1,977	1,952	1,986	1,937	2,027
Difference	149	152	110	90	91	155	140	141	130	150	122
Ratio	92.7%	92.7%	94.6%	95.7%	95.7%	92.7%	93.4%	93.3%	93.8%	92.8%	94.3%
UMFK											
Fall	495	545	497	589	729	731	694	708	779	907	919
Spring	445	506	470	538	686	626	560	625	750	830	815
Difference	50	40	27	52	43	105	134	84	29	77	104
Ratio	89.9%	92.8%	94.5%	91.3%	94.2%	85.7%	80.6%	88.2%	96.3%	91.5%	88.7%
UMM											
Fall	624	647	641	640	606	605	653	680	754	666	626
Spring	609	642	599	607	584	571	636	690	719	664	607
Difference	15	5	42	34	22	35	17	(10)	36	3	19
Ratio	97.6%	99.3%	93.5%	94.8%	96.4%	94.3%	97.4%	101.5%	95.3%	99.6%	97.0%
UMPI											
Fall	1,018	1,053	1,060	1,036	1,081	1,135	1,058	1,158	1,207	1,293	1,242
Spring	974	1,002	938	963	1,038	1,000	941	1,050	1,094	1,159	1,146
Difference	44	51	122	73	44	135	118	109	113	135	96
Ratio	95.7%	95.1%	88.5%	92.9%	96.0%	88.1%	88.9%	90.6%	90.6%	89.6%	92.3%
USM											
Fall	5,814	5,982	6,234	6,386	6,496	6,658	6,844	7,296	7,223	7,305	7,348
Spring	5,380	5,559	5,752	5,886	6,036	6,157	6,394	6,733	6,761	6,810	6,785
Difference	434	423	482	500	460	501	450	563	462	495	563
Ratio	92.5%	92.9%	92.3%	92.2%	92.9%	92.5%	93.4%	92.3%	93.6%	93.2%	92.3%
TOTAL											
Fall	20,301	20,293	20,010	20,510	21,472	21,938	# 22,391	23,369	23,938	24,118	24,247
Spring	18,828	19,028	18,667	19,460	20,401	20,546	# 21,164	22,322	22,637	22,754	22,662
Difference	1,473	1,265	1,343	1,050	1,071	1,392	1,227	1,047	1,302	1,364	1,585
Ratio	92.7%	93.8%	93.3%	94.9%	95.0%	93.7%	94.5%	95.5%	94.6%	94.3%	93.5%

* The formula for calculating FTE is as follows:

Undergraduate Credit Hours/15 + Professional (Law) Credit Hours/15 + Graduate Credit Hours/9 = FTE

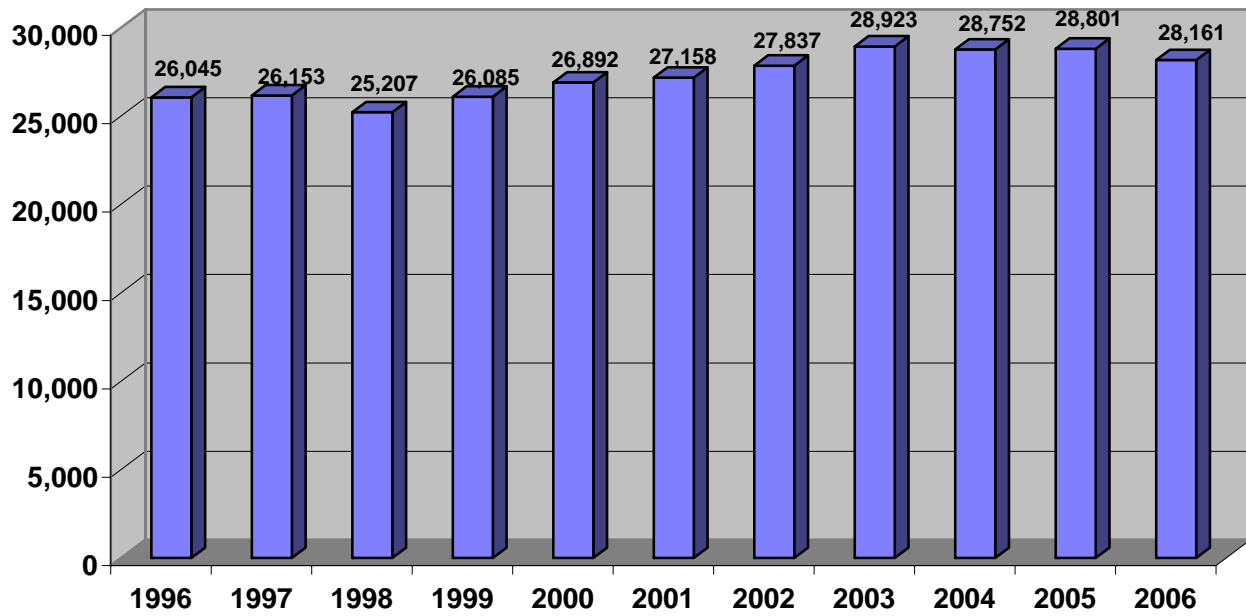
Totals may not add to detail due to rounding

**Years 1996-2006 are academic years, i.e. Fall 2005 is in academic year 2006.

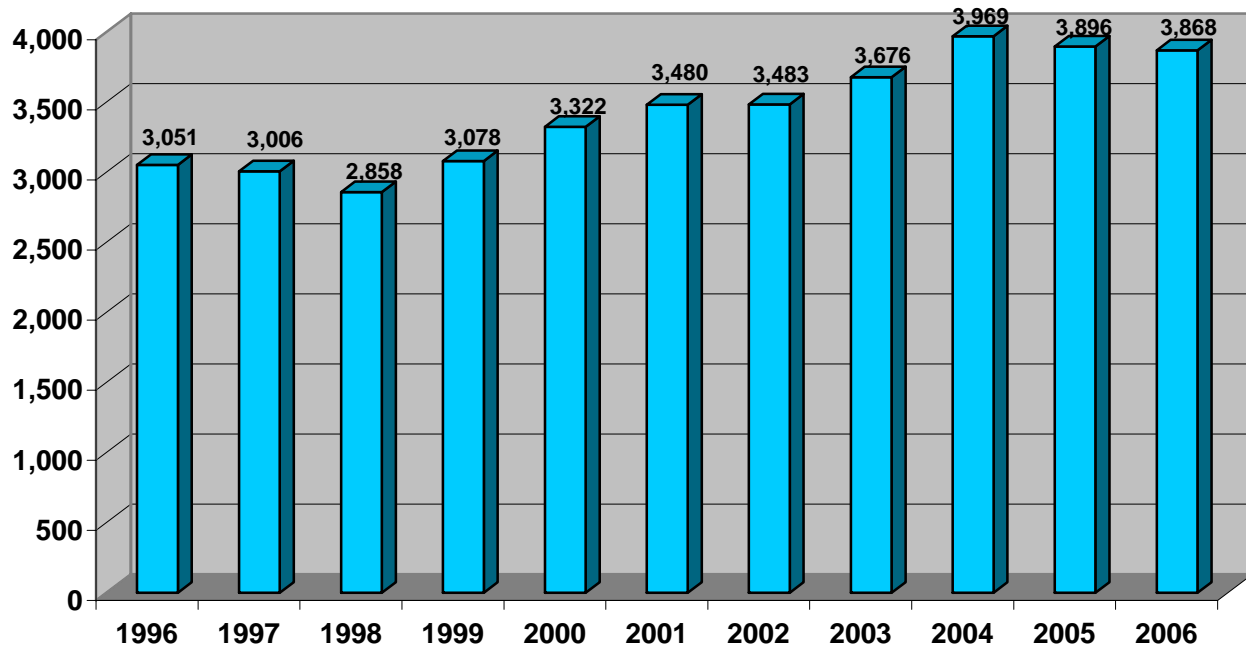
SPRING HEADCOUNT ENROLLMENT BY RESIDENCE, BY UNIVERSITY
(1996-2006)

	1996	1997	1998	1999	2000	2001	2002	2003	2004	2005	2006	CHANGE FROM	
												2005 TO 2006	
												#	%
<u>UM</u>													
In-State	7,703	7,583	7,305	7,463	7,898	8,252	8,682	9,223	9,152	9,147	9,135	(12)	(0.1)
Out-of-State	1,645	1,602	1,513	1,573	1,581	1,611	1,592	1,683	1,723	1,626	1,660	34	2.1
Total	9,348	9,185	8,818	9,036	9,479	9,863	10,274	10,906	10,875	10,773	10,795	22	0.2
<u>UMA</u>													
In-State	5,511	5,181	4,746	5,246	5,437	5,324	5,432	5,537	5,490	5,464	5,045	(419)	(7.7)
Out-of-State	72	52	32	35	31	110	112	125	165	168	148	(20)	(11.9)
Total	5,583	5,233	4,778	5,281	5,468	5,434	5,544	5,662	5,655	5,632	5,193	(439)	(7.8)
<u>UMF</u>													
In-State	2,040	2,068	1,999	2,027	1,980	1,901	1,853	1,879	1,875	1,841	1,962	121	6.6
Out-of-State	288	270	300	337	367	382	403	394	397	366	384	18	4.9
Total	2,328	2,338	2,299	2,364	2,347	2,283	2,256	2,273	2,272	2,207	2,346	139	6.3
<u>UMFK</u>													
In-State	527	618	610	539	575	555	479	535	674	777	876	99	12.7
Out-of-State	134	142	121	173	258	259	219	221	268	305	268	(37)	(12.1)
Total	661	760	731	712	833	814	698	756	942	1,082	1,144	62	5.7
<u>UMM</u>													
In-State	695	781	687	720	764	735	755	929	1,005	1,034	939	(95)	(9.2)
Out-of-State	163	175	161	154	144	145	205	208	229	200	172	(28)	(14.0)
Total	858	956	848	874	908	880	960	1,137	1,234	1,234	1,111	(123)	(10.0)
<u>UMPI</u>													
In-State	1,016	1,108	1,039	1,076	1,104	1,031	1,085	1,135	1,116	1,129	1,133	4	0.4
Out-of-State	226	211	167	180	263	256	193	262	311	357	362	5	1.4
Total	1,242	1,319	1,206	1,256	1,367	1,287	1,278	1,397	1,427	1,486	1,495	9	0.6
<u>USM</u>													
In-State	8,553	8,814	8,821	9,014	9,104	9,360	9,551	9,685	9,440	9,409	9,071	(338)	(3.6)
Out-of-State	523	554	564	626	678	717	759	783	876	874	874	0	0.0
Total	9,076	9,368	9,385	9,640	9,782	10,077	10,310	10,468	10,316	10,283	9,945	(338)	(3.3)
<u>TOTAL</u>													
In-State	26,045	26,153	25,207	26,085	26,862	27,158	27,837	28,923	28,752	28,801	28,161	(640)	(2.2)
Out-of-State	3,051	3,006	2,858	3,078	3,322	3,480	3,483	3,676	3,969	3,896	3,868	(28)	(0.7)
Total	29,096	29,159	28,065	29,163	30,184	30,638	31,320	32,599	32,721	32,697	32,029	(668)	(2.0)

Spring In-State Enrollment



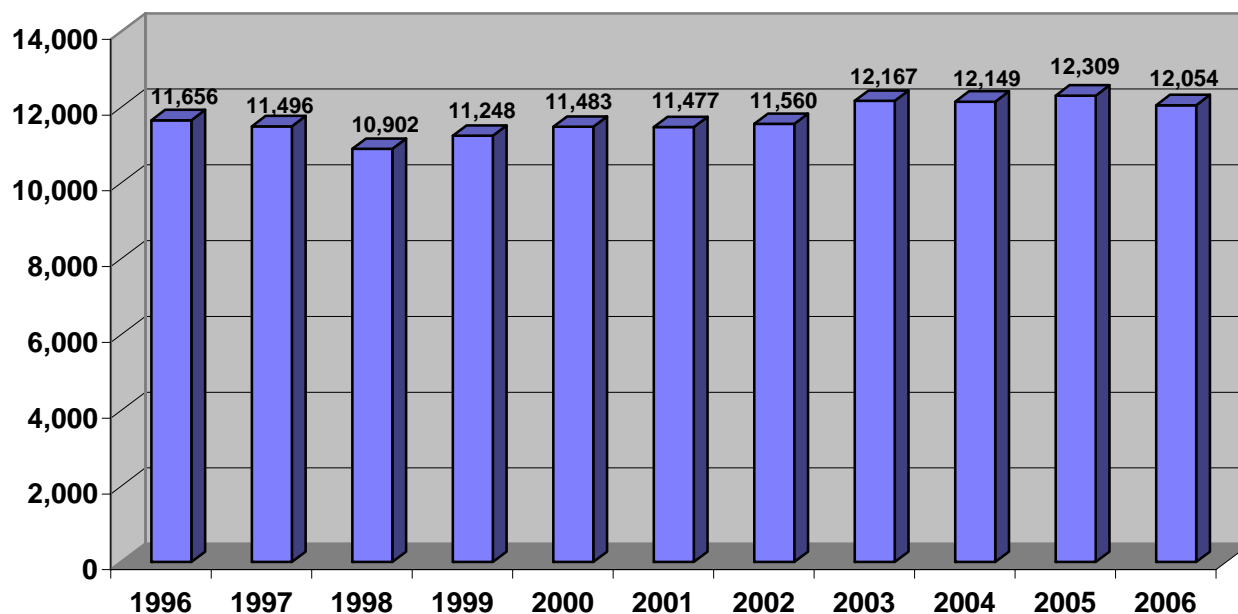
Spring Out-of-State Enrollment



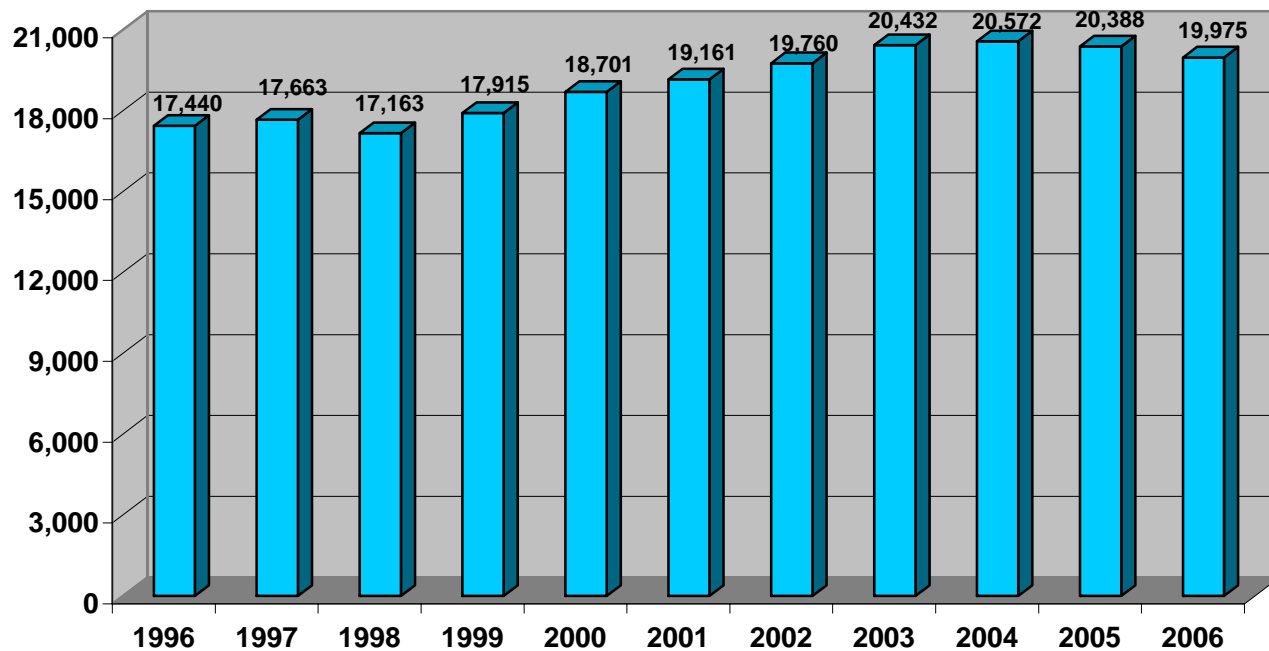
SPRING HEADCOUNT ENROLLMENT BY GENDER
(1996 - 2006)

	1996	1997	1998	1999	2000	2001	2002	2003	2004	2005	2006	CHANGE FROM 2005 TO 2006	
												#	%
<u>UM</u>													
Men	4,491	4,424	4,257	4,274	4,384	4,513	4,637	4,945	4,941	4,940	4,976	36	0.7
Women	4,857	4,761	4,561	4,762	5,095	5,350	5,637	5,961	5,934	5,833	5,819	(14)	(0.2)
Total	9,348	9,185	8,818	9,036	9,479	9,863	10,274	10,906	10,875	10,773	10,795	22	0.2
<u>UMA</u>													
Men	1,766	1,486	1,271	1,413	1,435	1,385	1,290	1,417	1,436	1,449	1,308	(141)	(9.7)
Women	3,817	3,747	3,507	3,868	4,033	4,049	4,254	4,245	4,219	4,183	3,885	(298)	(7.1)
Total	5,583	5,233	4,778	5,281	5,468	5,434	5,544	5,662	5,655	5,632	5,193	(439)	(7.8)
<u>UMF</u>													
Men	719	717	715	767	738	747	739	761	784	763	775	12	1.6
Women	1,609	1,621	1,584	1,597	1,609	1,536	1,517	1,512	1,488	1,444	1,571	127	8.8
Total	2,328	2,338	2,299	2,364	2,347	2,283	2,256	2,273	2,272	2,207	2,346	139	6.3
<u>UMFK</u>													
Men	278	283	245	271	297	273	245	293	320	389	392	3	0.8
Women	383	477	486	441	536	541	453	463	622	693	752	59	8.5
Total	661	760	731	712	833	814	698	756	942	1,082	1,144	62	5.7
<u>UMM</u>													
Men	328	355	306	326	319	287	302	331	344	350	293	(57)	(16.3)
Women	530	601	542	548	589	593	658	806	890	884	818	(66)	(7.5)
Total	858	956	848	874	908	880	960	1,137	1,234	1,234	1,111	(123)	(10.0)
<u>UMPI</u>													
Men	528	528	476	499	515	467	463	501	483	503	499	(4)	(0.8)
Women	714	791	730	757	852	820	815	896	944	983	996	13	1.3
Total	1,242	1,319	1,206	1,256	1,367	1,287	1,278	1,397	1,427	1,486	1,495	9	0.6
<u>USM</u>													
Men	3,546	3,703	3,632	3,698	3,795	3,805	3,884	3,919	3,841	3,915	3,811	(104)	(2.7)
Women	5,530	5,665	5,753	5,942	5,987	6,272	6,426	6,549	6,475	6,368	6,134	(234)	(3.7)
Total	9,076	9,368	9,385	9,640	9,782	10,077	10,310	10,468	10,316	10,283	9,945	(338)	(3.3)
<u>TOTAL</u>													
Men	11,656	11,496	10,902	11,248	11,483	11,477	11,560	12,167	12,149	12,309	12,054	(255)	(2.1)
Women	17,440	17,663	17,163	17,915	18,701	19,161	19,760	20,432	20,572	20,388	19,975	(413)	(2.0)
Total	29,096	29,159	28,065	29,163	30,184	30,638	31,320	32,599	32,721	32,697	32,029	(668)	(2.0)

Spring Enrollment - Men



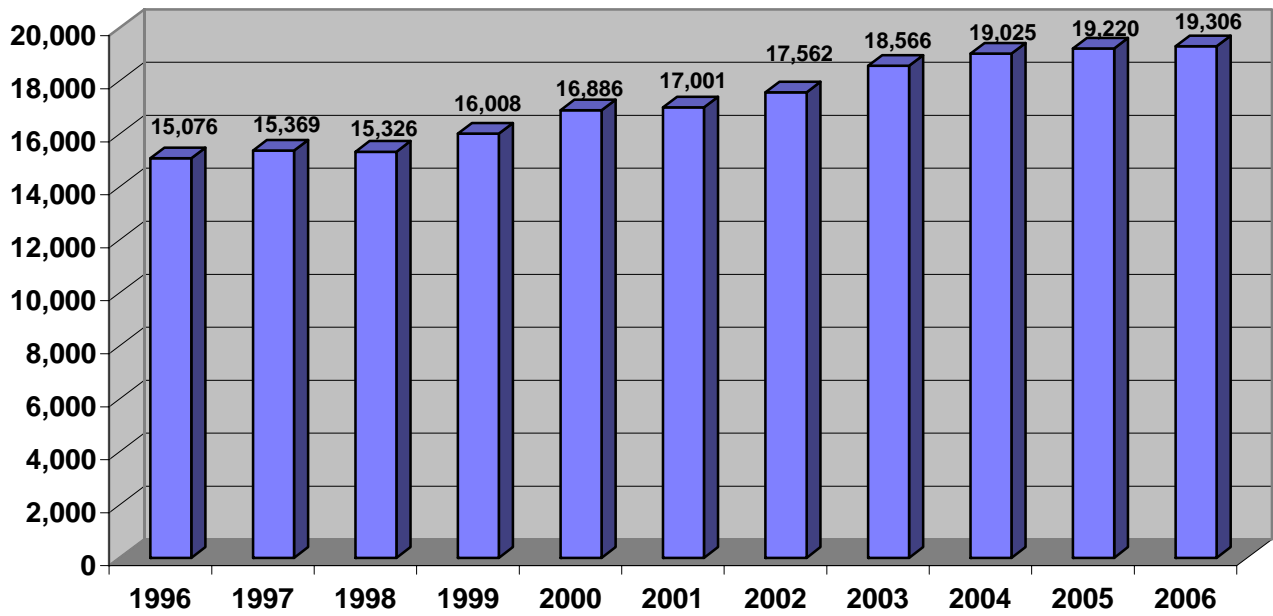
Spring Enrollment - Women



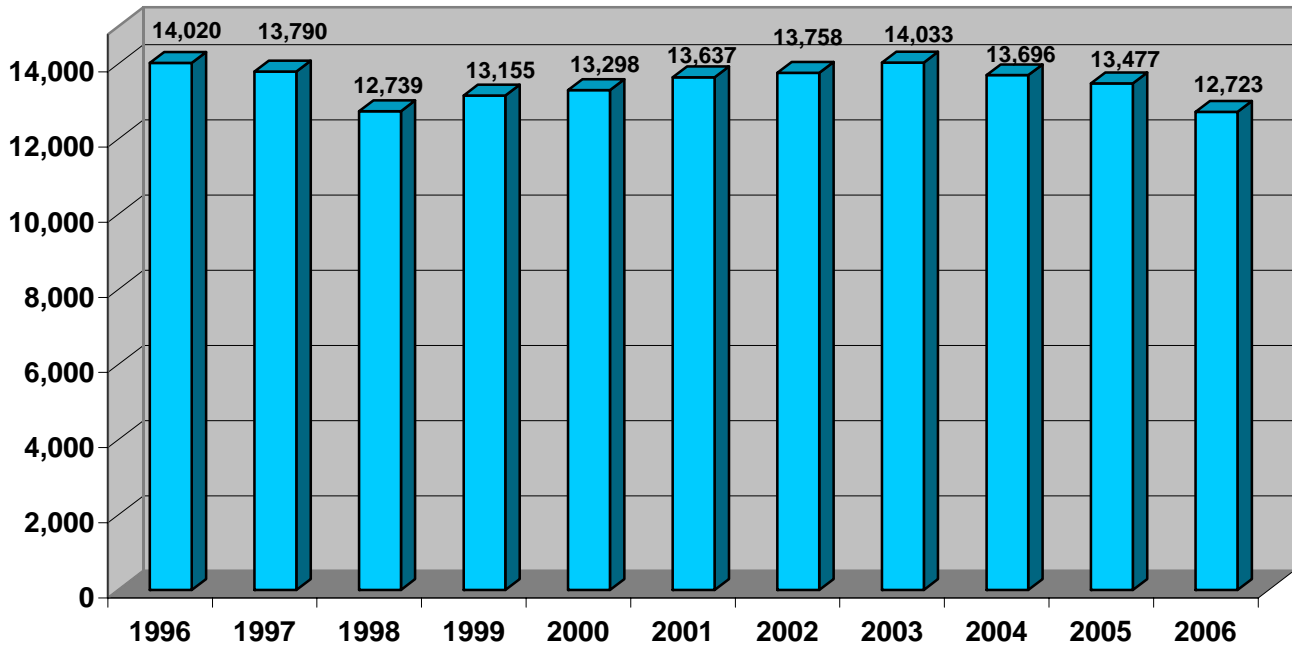
FULL-TIME AND PART-TIME SPRING HEADCOUNT ENROLLMENT BY UNIVERSITY (1996 - 2006)

	1996	1997	1998	1999	2000	2001	2002	2003	2004	2005	2006	CHANGE FROM	
												2005 to 2006	
												#	%
UM													
Full-time	6,429	6,488	6,292	6,517	6,869	7,117	7,469	7,876	8,027	8,105	8,245	140	1.7
Part-time	2,919	2,697	2,526	2,519	2,610	2,746	2,805	3,030	2,848	2,668	2,550	(118)	(4.4)
Total	9,348	9,185	8,818	9,036	9,479	9,863	10,274	10,906	10,875	10,773	10,795	22	0.2
UMA													
Full-time	1,216	1,189	1,122	1,355	1,514	1,401	1,371	1,506	1,575	1,555	1,448	(107)	(6.9)
Part-time	4,367	4,044	3,656	3,926	3,954	4,033	4,173	4,156	4,080	4,077	3,745	(332)	(8.1)
Total	5,583	5,233	4,778	5,281	5,468	5,434	5,544	5,662	5,655	5,632	5,193	(439)	(7.8)
UMF													
Full-time	1,791	1,813	1,837	1,909	1,936	1,910	1,920	1,902	1,925	1,897	2,004	107	5.6
Part-time	537	525	462	455	411	373	336	371	347	310	342	32	10.3
Total	2,328	2,338	2,299	2,364	2,347	2,283	2,256	2,273	2,272	2,207	2,346	139	6.3
UMFK													
Full-time	365	404	367	425	558	507	466	533	614	676	637	(39)	(5.8)
Part-time	296	356	364	287	275	307	232	223	328	406	507	101	24.9
Total	661	760	731	712	833	814	698	756	942	1,082	1,144	62	5.7
UMM													
Full-time	512	525	505	500	461	457	508	525	533	476	429	(47)	(9.9)
Part-time	346	431	343	374	447	423	452	612	701	758	682	(76)	(10.0)
Total	858	956	848	874	908	880	960	1,137	1,234	1,234	1,111	(123)	(10.0)
UMPI													
Full-time	892	887	846	853	918	894	831	924	961	1,019	1,013	(6)	(0.6)
Part-time	350	432	360	403	449	393	447	473	466	467	482	15	3.2
Total	1,242	1,319	1,206	1,256	1,367	1,287	1,278	1,397	1,427	1,486	1,495	9	0.6
USM													
Full-time	3,871	4,063	4,357	4,449	4,630	4,715	4,997	5,300	5,390	5,492	5,530	38	0.7
Part-time	5,205	5,305	5,028	5,191	5,152	5,362	5,313	5,168	4,926	4,791	4,415	(376)	(7.8)
Total	9,076	9,368	9,385	9,640	9,782	10,077	10,310	10,468	10,316	10,283	9,945	(338)	(3.3)
TOTAL													
Full-time	15,076	15,369	15,326	16,008	16,886	17,001	17,562	18,566	19,025	19,220	19,306	86	0.4
Part-time	14,020	13,790	12,739	13,155	13,298	13,637	13,758	14,033	13,696	13,477	12,723	(754)	(5.6)
Total	29,096	29,159	28,065	29,163	30,184	30,638	31,320	32,599	32,721	32,697	32,029	(668)	(2.0)

Spring Full-Time Enrollment



Spring Part-Time Enrollment



SPRING HEADCOUNT ENROLLMENT BY DEGREE LEVEL
(1996 - 2006)

	1996	1997	1998	1999	2000	2001	2002	2003	2004	2005	2006	CHANGE FROM 2005 TO 2006	
												#	%
Associate	3,598	3,467	3,218	3,335	3,368	3,049	3,051	3,015	2,903	2,648	2,200	(448)	(16.9)
Baccalaureate	16,430	16,824	16,512	17,117	18,083	18,254	18,923	19,807	20,381	20,844	21,032	188	0.9
Graduate	3,386	3,446	3,367	3,479	3,576	3,788	3,943	4,299	4,153	4,132	4,016	(116)	(2.8)
Law	272	278	283	280	256	229	230	245	270	269	249	(20)	(7.4)
Non-Degree	<u>5,410</u>	<u>5,144</u>	<u>4,685</u>	<u>4,952</u>	<u>4,901</u>	<u>5,318</u>	<u>5,173</u>	<u>5,233</u>	<u>5,014</u>	<u>4,804</u>	<u>4,532</u>	<u>(272)</u>	<u>(5.7)</u>
Total	<u>29,096</u>	<u>29,159</u>	<u>28,065</u>	<u>29,163</u>	<u>30,184</u>	<u>30,638</u>	<u>31,320</u>	<u>32,599</u>	<u>32,721</u>	<u>32,697</u>	<u>32,029</u>	<u>(668)</u>	<u>(2.0)</u>

HEADCOUNT ENROLLMENT BY DEGREE LEVEL AND UNIVERSITY**SPRING 2006**

	<u>Associate</u>		<u>Baccalaureate</u>		<u>Graduate</u>		<u>Law</u>		<u>Non-Degree</u>		<u>Total</u>	
	<u>#</u>	<u>%</u>	<u>#</u>	<u>%</u>	<u>#</u>	<u>%</u>	<u>#</u>	<u>%</u>	<u>#</u>	<u>%</u>	<u>#</u>	<u>%</u>
UM	0	0.0	7,980	73.9	2,021	18.7	0	0.0	794	7.4	10,795	100.0
UMA	1,985	38.2	2,204	42.4	0	0.0	0	0.0	1,004	19.3	5,193	100.0
UMF	0	0.0	2,159	92.0	0	0.0	0	0.0	187	8.0	2,346	100.0
UMFK	85	7.4	663	58.0	1	0.1	0	0.0	395	34.5	1,144	100.0
UMM	42	3.8	495	44.6	0	0.0	0	0.0	574	51.7	1,111	100.0
UMPI	55	3.7	1,114	74.5	0	0.0	0	0.0	326	21.8	1,495	100.0
USM	<u>33</u>	0.3	<u>6,417</u>	64.5	<u>1,994</u>	20.1	<u>249</u>	2.5	<u>1,252</u>	12.6	<u>9,945</u>	100.0
TOTAL	<u>2,200</u>	6.9	<u>21,032</u>	65.7	<u>4,016</u>	12.5	<u>249</u>	0.8	<u>4,532</u>	14.1	<u>32,029</u>	100.0

Note: Percentages may not add to 100.0 due to rounding.

**SPRING FIRST-TIME FIRST-YEAR STUDENT ENROLLMENT
(1988 - 2006)**

	<u>UM</u>	<u>UMA</u>	<u>UMF</u>	<u>UMFK</u>	<u>UMM</u>	<u>UMPI</u>	<u>USM</u>	<u>TOTAL</u>								
1988	96	104	35	12	25	16	130	418								
1989	100	127	31	22	28	27	124	459								
1990	158	122	37	11	43	33	137	541								
1991	145	176	52	12	31	40	163	619								
1992	89	154	32	13	25	16	132	461								
1993	110	194	39	18	25	36	169	591								
1994	88	225	38	15	21	24	128	539								
1995	75	152	23	14	22	27	125	438								
1996	42	206	33	7	24	30	100	442								
1997	46	239	37	15	28	38	147	550								
1998	42	197	31	8	23	22	76	399								
1999	59	226	39	12	23	45	107	511								
2000	41	224	26	12	20	39	119	481								
2001	41	192	16	12	15	42	106	424								
2002	59	270	24	13	6	52	108	532								
2003	47	298	20	18	12	27	78	500								
2004	51	230	23	24	9	36	59	432								
2005	42	213	18	19	15	29	73	409								
2006	48	181	31	11	11	28	72	382								
Change from 2005 to 2006	<u>#</u> 6	<u>%</u> 14.3	<u>#</u> (32)	<u>%</u> (15.0)	<u>#</u> 13	<u>%</u> 72.2	<u>#</u> (8)	<u>%</u> (42.1)	<u>#</u> (4)	<u>%</u> (26.7)	<u>#</u> (1)	<u>%</u> (3.4)	<u>#</u> (1)	<u>%</u> (1.4)	<u>#</u> (27)	<u>%</u> (6.6)

**SPRING TRANSFER STUDENT ENROLLMENT
(1988 - 2006)**

	<u>UM</u>	<u>UMA</u>	<u>UMF</u>	<u>UMFK</u>	<u>UMM</u>	<u>UMPI</u>	<u>USM</u>	<u>TOTAL</u>								
1988	144	110	69	4	18	47	299	691								
1989	136	110	77	16	29	63	325	756								
1990	210	185	95	13	36	60	363	962								
1991	281	195	102	12	29	50	437	1,106								
1992	235	170	61	27	46	80	381	1,000								
1993	227	245	139	33	32	70	381	1,127								
1994	185	183	109	31	27	65	281	881								
1995	185	202	88	23	35	51	295	879								
1996	160	228	80	30	39	59	316	912								
1997	203	214	97	28	37	55	307	941								
1998	203	182	66	30	30	49	313	873								
1999	206	260	79	36	20	61	294	956								
2000	208	300	99	69	36	68	361	1,141								
2001	173	275	65	45	26	55	350	989								
2002	196	264	75	70	37	30	357	1,029								
2003	250	307	76	52	36	83	373	1,177								
2004	193	271	74	64	29	93	397	1,121								
2005	196	283	78	65	29	101	340	1,092								
2006	239	255	85	70	35	84	326	1,094								
Change from 2005 to 2006	<u>#</u> 43	<u>%</u> 21.9	<u>#</u> (28)	<u>%</u> (9.9)	<u>#</u> 7	<u>%</u> 9.0	<u>#</u> 5	<u>%</u> 7.7	<u>#</u> 6	<u>%</u> 20.7	<u>#</u> (17)	<u>%</u> (16.8)	<u>#</u> (14)	<u>%</u> (4.1)	<u>#</u> 2	<u>%</u> 0.2

SPRING HEADCOUNT ENROLLMENT
BY
COUNTY OF RESIDENCE
(2002 - 2006)

	2002		2003		2004		2005		2006		CHANGE FROM 2005 TO 2006	
	#	%	#	%	#	%	#	%	#	%	#	%
<u>IN-STATE</u>												
Androscoggin	2,074	6.6	2,109	6.5	2,107	6.4	2,179	6.7	2,010	6.3	(169)	(7.8)
Aroostook	2,014	6.4	2,091	6.4	2,125	6.5	2,162	6.6	2,182	6.8	20	0.9
Cumberland	5,634	18.0	5,837	17.9	5,787	17.7	5,693	17.4	5,671	17.7	(22)	(0.4)
Franklin	818	2.6	812	2.5	759	2.3	757	2.3	701	2.2	(56)	(7.4)
Hancock	1,052	3.4	1,080	3.3	1,076	3.3	1,106	3.4	1,080	3.4	(26)	(2.4)
Kennebec	2,945	9.4	3,158	9.7	3,101	9.5	3,061	9.4	3,089	9.6	28	0.9
Knox	900	2.9	905	2.8	953	2.9	961	2.9	972	3.0	11	1.1
Lincoln	648	2.1	639	2.0	651	2.0	676	2.1	671	2.1	(5)	(0.7)
Oxford	984	3.1	1,063	3.3	1,033	3.2	1,119	3.4	1,042	3.3	(77)	(6.9)
Penobscot	4,558	14.6	4,689	14.4	4,668	14.3	4,703	14.4	4,442	13.9	(261)	(5.5)
Piscataquis	391	1.2	387	1.2	356	1.1	354	1.1	351	1.1	(3)	(0.8)
Sagadahoc	743	2.4	785	2.4	837	2.6	791	2.4	815	2.5	24	3.0
Somerset	688	2.2	735	2.3	711	2.2	767	2.3	764	2.4	(3)	(0.4)
Waldo	768	2.5	849	2.6	868	2.7	840	2.6	847	2.6	7	0.8
Washington	956	3.1	978	3.0	893	2.7	832	2.5	813	2.5	(19)	(2.3)
York	2,664	8.5	2,806	8.6	2,827	8.6	2,800	8.6	2,711	8.5	(89)	(3.2)
Subtotal	27,837	88.9	28,923	88.7	28,752	87.9	28,801	88.1	28,161	87.9	(640)	(2.2)
<u>OUT-OF-STATE</u>	3,483	11.1	3,676	11.3	3,969	12.1	3,896	11.9	3,868	12.1	(28)	(0.7)
<u>TOTAL</u>	31,320	100.0	32,599	100.0	32,721	100.0	32,697	100.0	32,029	100.0	(668)	(2.0)
<u>INTERNATIONAL</u>	863	2.8	930	2.9	1,033	3.2	1,030	3.2	972	3.0	(58)	(5.6)

NOTE: Detail percentages may not add to total due to rounding.

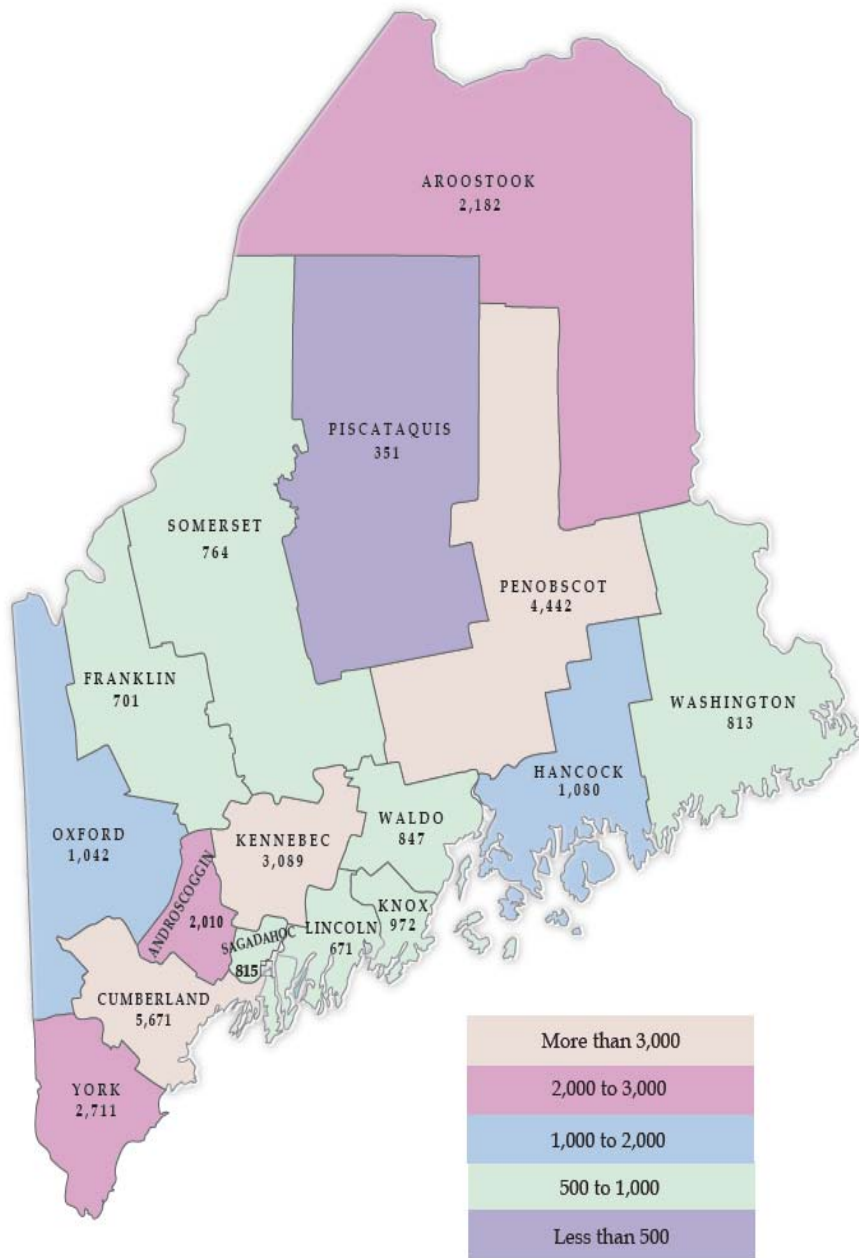
SPRING HEADCOUNT ENROLLMENT
BY
COUNTY OF RESIDENCE
(1996 - 2001)

	1996		1997		1998		1999		2000		2001	
	#	%	#	%	#	%	#	%	#	%	#	%
<u>IN-STATE</u>												
Androscoggin	1,924	6.6	1,910	6.6	1,806	6.6	1,954	6.7	1,910	6.3	2,045	6.7
Aroostook	2,005	6.9	2,041	7.0	1,957	7.0	2,061	7.1	2,113	7.0	2,053	6.7
Cumberland	5,551	19.1	5,660	19.4	5,494	19.7	5,466	18.7	5,463	18.1	5,451	17.8
Franklin	747	2.6	806	2.8	764	2.7	778	2.7	789	2.6	824	2.7
Hancock	984	3.4	1,021	3.5	961	3.4	1,015	3.5	1,084	3.6	1,031	3.4
Kennebec	2,654	9.1	2,663	9.1	2,539	9.1	2,681	9.2	2,844	9.4	2,873	9.4
Knox	787	2.7	717	2.5	674	2.4	743	2.5	803	2.7	853	2.8
Lincoln	597	2.1	577	2.0	591	2.1	631	2.2	614	2.0	596	1.9
Oxford	815	2.8	802	2.8	764	2.8	818	2.8	872	2.9	922	3.0
Penobscot	4,274	14.7	4,183	14.3	4,160	14.4	4,254	14.6	4,497	14.9	4,453	14.5
Piscataquis	330	1.1	354	1.2	339	1.2	343	1.2	373	1.2	372	1.2
Sagadahoc	593	2.0	604	2.1	601	2.1	664	2.3	673	2.2	706	2.3
Somerset	704	2.4	703	2.4	683	2.4	685	2.3	687	2.3	678	2.2
Waldo	463	1.6	484	1.7	502	1.7	562	1.9	584	1.9	737	2.4
Washington	997	3.4	995	3.4	932	3.2	917	3.1	988	3.3	957	3.1
York	2,620	9.0	2,633	9.0	2,440	8.9	2,513	8.6	2,568	8.5	2,607	8.5
Subtotal	26,045	89.5	26,153	89.7	25,207	89.4	26,085	89.4	26,862	89.0	27,158	88.6
<u>OUT-OF-STATE</u>	3,051	10.5	3,006	10.3	2,858	10.2	3,078	10.6	3,322	11.0	3,480	11.4
<u>TOTAL</u>	<u>29,096</u>	<u>100.0</u>	<u>29,159</u>	<u>100.0</u>	<u>28,065</u>	<u>100.0</u>	<u>29,163</u>	<u>100.0</u>	<u>30,184</u>	<u>100.0</u>	<u>30,638</u>	<u>100.0</u>
<u>FOREIGN</u>	738	2.5	711	2.4	649	2.3	771	2.6	901	3.0	912	3.0

NOTE: Detail percentages may not add to total due to rounding.

SPRING 2006 Headcount Enrollment

By County of Residence



HEADCOUNT ENROLLMENT BY STATE OF RESIDENCE***SPRING 2006**

	<u>#</u>	<u>%</u>		<u>#</u>	<u>%</u>
ALASKA	12	0.4	NEBRASKA	5	0.2
ALABAMA	1	0.0	NEVADA	2	0.1
ARKANSAS	0	0.0	NEW HAMPSHIRE	439	15.2
ARIZONA	11	0.4	NEW JERSEY	118	4.1
CALIFORNIA	32	1.1	NEW MEXICO	6	0.2
COLORADO	18	0.6	NEW YORK	174	6.0
CONNECTICUT	242	8.4	NORTH CAROLINA	10	0.3
DELAWARE	9	0.3	NORTH DAKOTA	0	0.0
DISTRICT OF COLUMBIA	4	0.1	OHIO	31	1.1
FLORIDA	27	0.9	OKLAHOMA	0	0.0
GEORGIA	8	0.3	OREGON	8	0.3
HAWAII	5	0.2	PENNSYLVANIA	90	3.1
IDAHO	5	0.2	RHODE ISLAND	65	2.2
ILLINOIS	35	1.2	SOUTH CAROLINA	5	0.2
INDIANA	14	0.5	SOUTH DAKOTA	2	0.1
IOWA	6	0.2	TENNESSEE	2	0.1
KANSAS	2	0.1	TEXAS	19	0.7
KENTUCKY	5	0.2	UTAH	3	0.1
LOUISIANA	1	0.0	VERMONT	206	7.1
MARYLAND	35	1.2	VIRGINIA	37	1.3
MASSACHUSETTS	655	22.6	WASHINGTON	18	0.6
MICHIGAN	21	0.7	WEST VIRGINIA	2	0.1
MINNESOTA	23	0.8	WISCONSIN	11	0.4
MISSISSIPPI	0	0.0	WYOMING	1	0.0
MISSOURI	7	0.2	OTHER	461	15.9
MONTANA	3	0.1	TOTAL	<u>2,896</u> *	<u>100.0</u>

* Excludes 972 international students of which 657 are from Canada.

NOTE: Percentages may not add to 100.0 due to rounding.

HEADCOUNT ENROLLMENT BY COUNTRY OF RESIDENCE**SPRING 2006**

	<u>#</u>	<u>%</u>
CANADA	657	67.6
PEOPLES REPUBLIC OF CHINA	54	5.6
INDIA	36	3.7
UNITED KINGDOM	23	2.4
NEPAL	12	1.2
JAPAN	10	1.0
OTHER FOREIGN COUNTRIES*	<u>180</u>	<u>18.5</u>
TOTAL	<u><u>972</u></u>	<u><u>100.0</u></u>

*Includes foreign countries with less than 10 students attending a University of Maine System campus.

NOTE: Percentages may not add to 100.0 due to rounding.

**SPRING 2006 DISTANCE LEARNING ENROLLMENT
ALL STUDENTS TAKING DISTANCE LEARNING COURSES**

The table below provides a summary profile of students taking distance education courses (i.e. through interactive television, the internet or another delivery mode). Students taking an ITV course at the broadcast sites, i.e. the classroom at which the course originated, are excluded as the broadcast course represents a traditional university course that would have historically been offered whether or not ITV existed.

	UM	UMA	UMF	UMFK	UMM	UMPI	USM	TOTAL
TOTAL	456	1,744	33	291	449	147	139	3,259
Associate	0	569	0	1	0	0	0	570
Freshman	0	119	0	1	1	5	1	127
Sophomore	14	115	0	3	2	3	0	137
Junior	20	200	0	2	5	3	4	234
Senior	39	328	3	0	5	16	4	395
Graduate	28	0	0	1	0	0	28	57
Law	0	0	0	0	0	0	0	0
Non-Degree	355	413	30	283	436	120	102	1,739
Full-Time	82	397	2	5	13	22	13	534
Part-Time	374	1,347	31	286	436	125	126	2,725
In-State	432	1,727	33	283	433	128	134	3,170
Out-of-State	24	17	0	8	16	19	5	89
Men	104	340	1	70	87	31	23	656
Women	352	1,404	32	221	362	116	116	2,603
ITV Credit Hours	1,623	8,546	134	1,003	1,574	477	470	13,827
F. T. E.	114	570	9	67	104	32	36	932
AGE*								
22 or less	136	364	1	63	80	24	13	681
23 to 30	104	469	8	82	142	44	35	884
31 to 40	117	438	10	76	114	39	37	831
41 to 50	68	357	8	49	82	21	37	622
51 or more	30	116	6	21	31	18	17	239
*Age ranges may not add to total headcount due to missing birth dates.								
Only Distance Education Headcount	366	1,028	27	281	432	121	122	2,377

● There are a total of 3,259 students enrolled in distance learning courses in Spring 2006, down 6.8% from 3,499 students in Spring 2005. Distance learning credits were 13,827 compared to 14,592 in Spring 2005 (a decrease of 5.2%).

● This table shows **all** students taking at least one distance education course, whether they are taking only distance education courses or are taking distance education courses and at least one non-distance education course.

● The students shown in the above table have already been counted in the enrollment figures in all other tables. These numbers should not be added to previously reported university enrollment figures.

● Only distance education headcount enrollment students are those students taking only distance learning courses and no other courses.

● Effective with the Fall 1995 semester, students enrolled in distance learning receive site courses are counted as part