

The University of Maine

DigitalCommons@UMaine

---

Vocal Popular Sheet Music Collection

Public domain (may be downloaded in full)

---

1918

## The Good Old Jackson Car

Carl Carlton  
*Composer*

C. D Paxson  
*Lyricist*

Follow this and additional works at: <https://digitalcommons.library.umaine.edu/mmb-vp>

---

### Recommended Citation

Carlton, Carl and Paxson, C. D, "The Good Old Jackson Car" (1918). *Vocal Popular Sheet Music Collection*. Score 535.

<https://digitalcommons.library.umaine.edu/mmb-vp/535>

This Book is brought to you for free and open access by DigitalCommons@UMaine. It has been accepted for inclusion in Vocal Popular Sheet Music Collection by an authorized administrator of DigitalCommons@UMaine. For more information, please contact [um.library.technical.services@maine.edu](mailto:um.library.technical.services@maine.edu).

*Jackson*

*"No Hill Too Steep"  
"No Sand Too Deep"*



*FROM EARTH TO MARS  
IN A JACKSON CAR.*

Words by  
C. D. PAXSON  
Music by  
C. CARLTON



Jackson Motor Car Co  
821 BOYLSTON ST.  
BOSTON, MASS.

VPAS  
G  
1918  
159



# The Good Old Jackson Car

Words by  
C. D. PAXSON

Music by  
CARL CARLTON

All<sup>o</sup> Mod<sup>to</sup>

PIANO



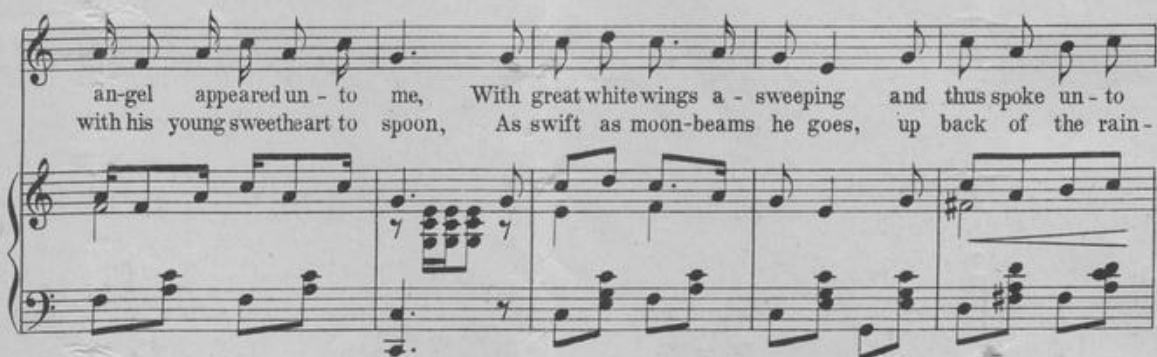
Voice

Last night as I lay sleep - ing an  
The wise old man up in the moon goes

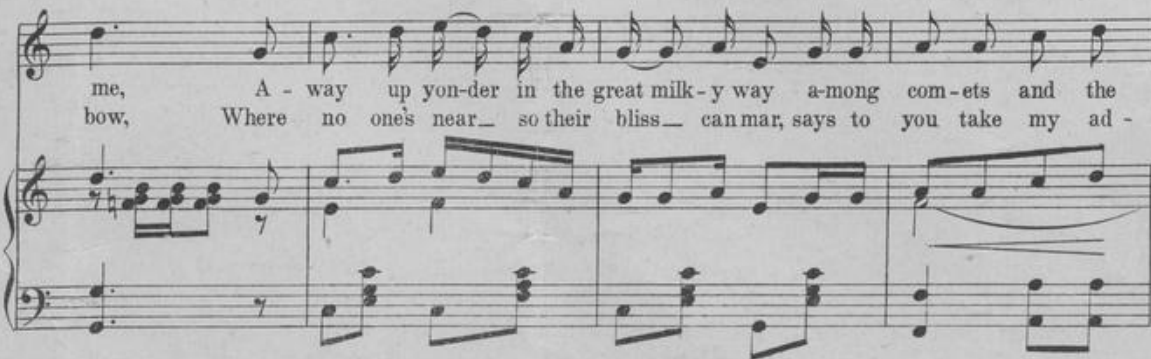
till Voice



an - gel ap - peared un - to me, With great white wings a - sweep - ing and thus spoke un - to  
with his young sweetheart to spoon, As swift as moon - beams he goes, up back of the rain -



me, A - way up yon - der in the great milk - y way a - mong com - ets and the  
bow, Where no one's near - so their bliss - can mar, says to you take my ad -



stars, They're us - ing au - to - mo - biles to - day and the best are the Jack-son cars.  
 vice, If you want something that's real - ly nice al-ways ride in a Jack-son car.

CHORUS

From earth to Mar, from star to star, It's al-ways the same in

*p-f*

sun-shine or rain, No hill too steep, no sand too deep for the

good old Jack - son car. From car.

1. 2.

No hill too steep  
No sand too deep

# JACKSON

In Power,  
Size, Equipment—  
The JACKSON gives you more

WHERE, save in the Jackson "42," will you get full 40 horsepower, 118 inch wheelbase, 34 x 4 inch tires, full elliptic springs, windshield, top, gas tank, etc.—all for \$1500?

Compare the Jackson "42," part for part, with any other car at \$1500.

See if you can buy in any other car of moderate price all the elements that make for efficiency, comfort, safety and satisfaction.

Make the comparison actual, if you can.

It will convince you that in power, size, equipment—the Jackson "42," gives you an extraordinary \$1500 worth of value.

In the Jackson "52"—a full fifty horsepower motor, 124 inch wheelbase, 36 x 4 inch tires and full elliptic spring—for \$1800.

In the Jackson "32"—a full thirty horsepower motor, 32 inch wheels, 110 inch wheelbase and full elliptic springs—for \$1100.

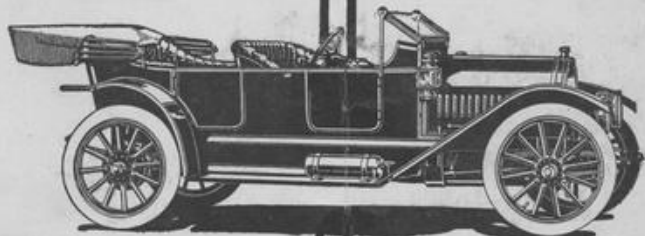
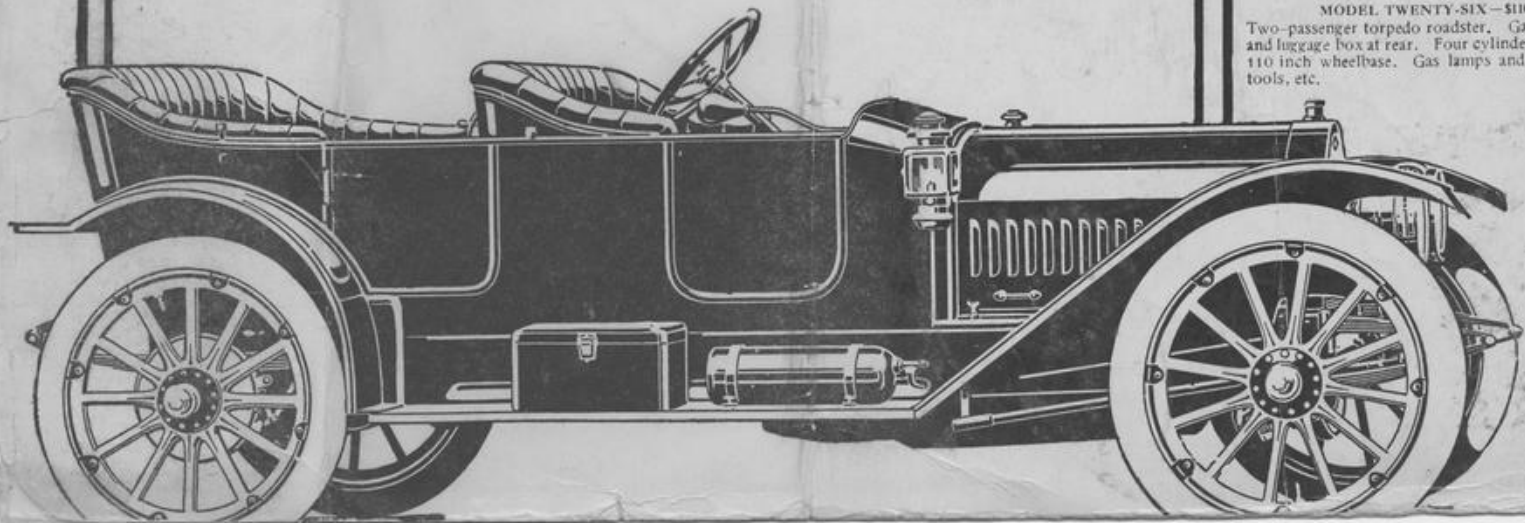
The Jackson always gives you more.

## JACKSON MOTOR CAR CO.

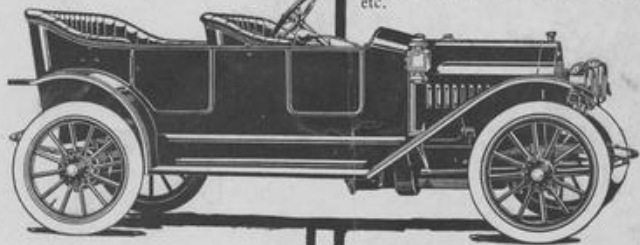
821 Boylston St., Boston, Mass.

### MODEL 52—\$1800

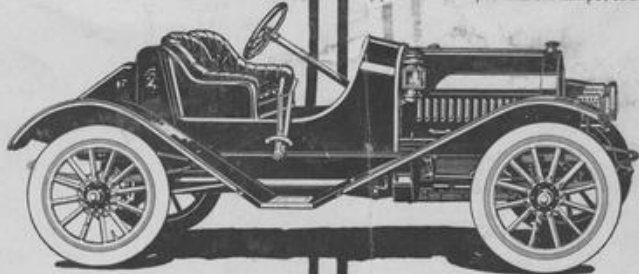
Fifty horsepower, four cylinder motor; 124 inch wheelbase; full elliptic springs, front and rear; 36 inch wheels. Extra roomy five-passenger body. Price includes demountable rims, gas tank, horn, tools, etc.



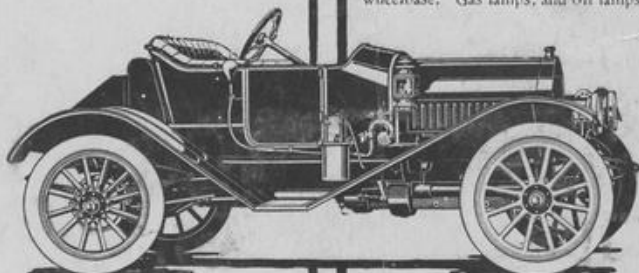
MODEL FORTY-TWO—\$1500  
Forty horsepower, four cylinder motor; 118 in. h wheelbase; full elliptic springs, front and rear; 34 x 4 tires. Roomy five-passenger body. Price includes full equipment of top, windshield, gas tank, etc.



MODEL THIRTY-TWO—\$1100  
Thirty horsepower, four cylinder motor; 110 inch wheelbase; 32 x 4 inch tires; five-passenger torpedo type. Gas lamps, and oil lamps, tools, etc.



MODEL TWENTY-EIGHT—\$1000  
Two-passenger roadster. Gasoline tank and luggage box at rear. Four cylinders, 30 H. P., 100 inch wheelbase. Gas lamps, and oil lamps, tools, etc.



MODEL TWENTY-SIX—\$1100  
Two-passenger torpedo roadster. Gasoline tank and luggage box at rear. Four cylinders, 30 H. P., 110 inch wheelbase. Gas lamps and oil lamps, tools, etc.