

The University of Maine

DigitalCommons@UMaine

Maine Sheet Music Collection

Public domain (may be downloaded in full)

1913

The Rosary

W. Franke Harling
Arranger

Ethelbert Woodbridge Nevin
Composer

Rogers
Lyricist

Follow this and additional works at: <https://digitalcommons.library.umaine.edu/mmb-me>

Recommended Citation

Harling, W. Franke; Nevin, Ethelbert Woodbridge; and Rogers, "The Rosary" (1913). *Maine Sheet Music Collection*. Score 474.

<https://digitalcommons.library.umaine.edu/mmb-me/474>

This Book is brought to you for free and open access by DigitalCommons@UMaine. It has been accepted for inclusion in Maine Sheet Music Collection by an authorized administrator of DigitalCommons@UMaine. For more information, please contact um.library.technical.services@maine.edu.

Johanna E. R. von Tiling
Cliff Island, Maine 04019

THE ROSARY

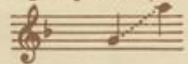
BY
ETHELBERT NEVIN

WORDS BY
ROBERT CAMERON ROGERS

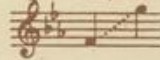
VOCAL EDITIONS

Song with Piano Accompaniment (Six Keys)

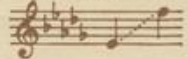
High Sop. or Ten., in F



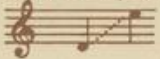
Sop. or Ten., in Eb



Sop. or Ten., in Db



Mez. S. or Bar., in C



Mez. Sop. or Bar., in B



Alto or Bass, in Bb



Edition with English, French & German words (6 Keys)	.60
Edition with French & English words (F, Db, C, Bb)	.60
Edition with German & English words (Eb, Db, C, Bb)	.60
Edition with Italian & English words (Db)	.60
Edition with Spanish & English words (6 Keys)	.60
Edition with Esperanto & Eng. words (Db)	.60
Edition with Violin obbligato (Eb, C)	.60
Song with Guitar Accompaniment	.60
Duet for Sop. and Alto, in Eb	.60
Duet for Sop. and Ten., in Eb	.60
Duet for Mez. Sop. and Bar., in C	.60
Quartet for Mixed Voices	.15
Quartet for Men's Voices	.15
Quartet for Women's Voices	.15
THE HOLY HOUR—(Edition with Sacred words for Church use) (Eb, C, Bb)	.60
THE HOLY HOUR—Quartet for Mixed Vo.	.15
THE HOLY HOUR—Quartet for Men's Vo.	.15
THE HOLY HOUR—Quartet for Women's Voices	.15

INSTRUMENTAL ARRANGEMENTS

Piano Solo, in "Book of 7 Melodies"	1.25
Piano Solo, arr. by B. Whelpley	.60
Piano Solo, arr. by Marschal-Loepke (simplified)	.45
Piano Four-Hands, arr. by Brower-Whelpley	.60
Two Pianos Four-Hands, arr. by Hull-Howe	.60
Piano Six-Hands, arr. by B. Treharne	.60
Organ Solo, arr. by R. Goss-Custard	.60
Harp (with organ <i>ad lib.</i>), arr. by A. F. Pinto	.75
Violin and Piano, arr. by Kreisler	.75
Violin and Piano, arr. by G. Strube	.60
Violin and Piano (simplified), arr. by P. Th. Miersch	.60
Violoncello and Piano	.60
Trio, Violin, Cello and Piano, arr. by Hugo Riesenfeld	.60
Cornet and Piano, arr. by H. G. Blaisdell	.60
C Melody Saxophone and Piano. Trans. by J. Gurewich	.75
Eb (Alto) Saxophone and Piano. Trans. by J. Gurewich	.75
Orchestra (Cornet Solo), arr. by G. Strube	1.00
Song Orchestration (Eb, Db, or Bb)	1.00
Military Band (Cornet Solo)	1.00
Ukulele, arr. by C. S. De Lano	.50
Steel Guitar, arr. by C. S. De Lano	.60
Mandolin and Piano	.40
2 Mandolins and Piano	.55
Mandolin and Guitar	.35
2 Mandolins and Guitar	.50
Mandolin Orchestra, arr. by H. F. Odell:	
1st Mandolin	.20
2nd Mandolin	.15
3rd Mandolin	.15
Tenor-Mandola	.15
Mando-Cello	.15
Mando-Bass	.15
Banjo Obligato	.15
Guitar Accompaniment	.15
Piano Accompaniment	.20
Flute	.15
Violoncello	.15
Trombone and Piano, arr. by M. Alloo	.60
Guitar Solo	.40
Flute and Piano	.60
Piano Accordion, arr. by Pietro Deiro	.40

THE BOSTON MUSIC COMPANY NEWBERRY MUSIC COMPANY

BOSTON, MASS.

14 FOREST AVENUE

PORTLAND 3, MAINE

Vdme.

002556
NEVIN

The Rosary

3

Duet for Mezzo-Soprano and Baritone

ROBERT CAMERON ROGERS

ETHELBERT NEVIN

Arranged by W. FRANKE HARLING

Lento ed intimo

Mezzo-Soprano *p*
The hours I spent with thee, dear heart,

Baritone

Piano *Lento ed intimo*
p

mp
Are as a string of pearls to me; I count them o-ver ev'-ry

mp
Are as a string of pearls to me; I count them o-ver ev'-ry

poco rall.

one a-part, My ro-sa-ry, my ro-sa-ry!

poco rall.

one a-part, My ro-sa-ry, my ro-sa-ry!

poco rall.

dolce

L.H.

Copyright, 1898, by G. Schirmer, Jr.

For all countries

Copyright, 1913, by The Boston Music Co.

B.M.Co. 3393 c

Printed in U.S.A.

a tempo mp
 Each hour a pearl, each pearl a pray'r, To still a heart in ab-sence

a tempo *p*
 Each hour a pearl, each

a tempo mp

f wrung: I tell each bead un - to the end, *largamente*

pearl a pray'r,— I tell each bead un - to the end, And there a *mf largamente*

mf dolce *largamente*

f *mf*

a tempo p O mem - o - ries that bless and

cross is hung! *a tempo p* O mem - o - ries that

a tempo

molto tenuto *quasi arpeggio pp dolcissimo*

burn! O bar-ren gain and bit-ter loss!

bless — and burn! — O bar-ren gain and bit - ter loss! —

patetico

Tea * *Tea* * *Tea* * *Tea* * *Tea* * *Tea* *

mf sempre cresc. I kiss each bead and strive at last to learn To

mf sempre cresc. I kiss each bead and strive at last to learn To kiss the

mf sempre cresc.

Tea * *Tea* *

poco accel. cresc. kiss the cross, — sweet - heart! To kiss the cross.

poco accel. cresc. cross, sweet - heart! To kiss the cross.

poco accel. *rall.* *ff* *Largo* *pp*

Tea * *Tea* * *Tea* *

OTHER NOTABLE COMPOSITIONS

By ETHELBERT NEVIN



"Nevin's songs have lyrical contour, lyrical impulses; they come forward in graceful curves like waves, and when they reach their destination, they rise to their climax and make a beautiful end. . . . If you feel in a man's work a quality, which you can only define by making an adjective of his name, then his work has that individuality without which no genius—however infinite his pains—could hold his own through the rush of time. Yes, I think we may call Ethelbert Nevin a great composer of great songs."

—RUPERT HUGHES—

Nevin Songs

Deep in a Rose's Glowing Heart <i>with acc. of piano, violin and 'cello</i> <i>High, A; Medium, G</i> .60 <i>with piano acc., same keys</i> .50	
One Spring Morning (Frühlingsmorgen) <i>with acc. of piano, violin and 'cello</i> <i>High, Em.; Medium, Dm. (c. & g.)</i> .75 <i>with piano acc., same keys</i> .75	
Doris <i>with acc. of piano, violin and 'cello</i> <i>High, F; Medium, Bb</i> .90 <i>with piano acc. High, F; Medium D (c. & g.)</i> .60	
Little Boy Blue <i>High, Bb; Medium, Ab</i> .60	
At Twilight <i>High, G; Medium, F</i> .60	
Time Enough (Rechte Zeit) <i>High, Bb; Medium, Ab; Low, Gb (c. & g.)</i> .50	
A Life Lesson ("There, little girl, don't cry") <i>High, Bb; Medium, G</i> .60	
O That We Two Were Maying <i>with piano acc. High, A; Low, F</i> .60 <i>duet with piano acc. Sop. and Tenor, Ab</i> <i>Sop. and Alto, Ab</i> <i>Alto and Bass, F Each</i> .75	
Narcissus <i>voice and piano High, Ab; Low, F</i> .60	

Organ Editions

Love Song (Arr. by Edward Shippen Barnes)	.60
Slumber Song (Arr. by E. H. Lemare)	.60
At Twilight (Arr. by A. H. Ryder)	.60
Ophelia (Arr. by P. J. Mansfield)	.60
Narcissus (Arr. by R. Goss-Custard)	.60
A Shepherd's Tale (Arr. by P. J. Mansfield)	.60
Misericordia (Arr. by P. J. Mansfield)	.60
The Rosary (Arr. by R. Goss-Custard)	.60
Wedding Prelude and Intermezzo	.60
Organ Folio (9 pieces)	Complete 1.00

Nevin Piano Pieces

SKETCH BOOK (Songs and Piano Pieces)	Complete	1.25
1. Gavotte		.50
2. Love Song		.50
3. Berceuse		.50
4. Serenata		.60
5. Valse Rhapsodie		.60
WATER SCENES	Complete	1.25
1. Dragon Fly		.60
2. Ophelia		.60
3. Water Nymph		.60
4. Narcissus		.60
5. Barcarolle		.75
IN ARGADY	Complete	1.25
1. A Shepherd's Tale		.60
2. Shepherds All and Maidens Fair		.75
3. Lullabye		.60
4. Tournament		.75
MAY IN TUSCANY (<i>Maggio in Toscano</i>)	Complete	1.25
1. Arlecchino		.60
2. Notturmo (in Boccaccio's Villa)		.75
3. Barchetta		.60
4. Misericordia		.60
5. Il Rusignuolo (In My Neighbor's Garden)		.75
6. La Pastorella (Montepiano)		.60
MELODIES (Transcriptions)	Complete	1.25
1. One Spring Morning	2. At Twilight	
3. Tell Me (<i>Dites-moi</i>)	4. The Rosary	
5. Time Enough (<i>Rechte Zeit</i>)	6. The Merry Lark	
7. Oh, That We Two Were Maying!		
EGYPTIAN LOVE SONG		.60

Violin and Piano

Love Song	.60
Autumn	.60
Melody	.60
Habanera	.75
Narcissus (Arr. by G. Strube)	.60
Narcissus (Simplified arr. by A. Moffat)	.60
Barcarolle	.75
Lullabye	.60
Romance (Transcr. by C. Engel)	.75
Slumber Song (op. posth.)	.60
The Rosary (Arr. by Fritz Kreisler)	.75
The Rosary (Arr. by G. Strube)	.60
The Rosary (Simplified arr. by P. Th. Mierch)	.60

Orchestra Editions

POPULAR CONCERT		
Library Number		
1. O That We Two Were Maying	}	Small
7. Country Dance		Orch.
8. In Arcady		.80
9. Narcissus		
11. Romance		Full
12. Barchetta		Orch.
32. Love Song		1.10
52. { Song of Love		
The Old Mill		

The Boston Music Company - Boston, Mass.