

The University of Maine

DigitalCommons@UMaine

Vocal Popular Sheet Music Collection

Public domain (may be downloaded in full)

1914

Shadowland

Lawrence B Gilbert

Composer

Follow this and additional works at: <https://digitalcommons.library.umaine.edu/mmb-vp>

Recommended Citation

Gilbert, Lawrence B, "Shadowland" (1914). *Vocal Popular Sheet Music Collection*. Score 357.
<https://digitalcommons.library.umaine.edu/mmb-vp/357>

This Book is brought to you for free and open access by DigitalCommons@UMaine. It has been accepted for inclusion in Vocal Popular Sheet Music Collection by an authorized administrator of DigitalCommons@UMaine. For more information, please contact um.library.technical.services@maine.edu.

DOWN YONDER

By L. WOLFE GILBERT

40¢



Sincerely
FREDDY MARTIN

Vp. 001146
1921
Down

SOLE SELLING AGENT SOUTHERN MUSIC PUB. CO., INC.
1619 BROADWAY, NEW YORK, 19, N.Y.



Down Yonder

By L. WOLFE GILBERT

Allegro moderato

Piano

The piano introduction and first system of piano accompaniment. The key signature is B-flat major (two flats). The time signature is 2/4. The tempo is Allegro moderato. The first system consists of two staves. The right hand starts with a forte (f) dynamic, playing a series of eighth notes and quarter notes. The left hand plays a steady eighth-note accompaniment. The second system continues the melody, with a crescendo leading to a forte (f) dynamic. The third system features a 'Vamp' section marked with a 'mf' (mezzo-forte) dynamic, consisting of a repeating eighth-note pattern. The fourth system concludes with a 'Train Whistle' effect, marked 'Sva ad lib.' (Sustained ad libitum), featuring a series of descending and ascending notes.

Voice

Rail - road train, Rail - road train, Hur - ry some more
Sum - mer night, Fields of white, Bright cot - ton moon

The second system of piano accompaniment, corresponding to the first vocal line. It features a piano (p) dynamic. The right hand plays a series of quarter notes and half notes, while the left hand provides a steady eighth-note accompaniment. The system concludes with a series of descending notes in the right hand.

F7

B \flat 7

Put a lit - tle steam on just like nev - er be - fore
My, but I feel glad, I'm gon - na' see you all soon

The third system of piano accompaniment, corresponding to the second vocal line. It features a piano (p) dynamic. The right hand plays a series of quarter notes and half notes, while the left hand provides a steady eighth-note accompaniment. The system concludes with a series of descending notes in the right hand.

Copyright, 1921, by La Salle Music Publishers, Inc., 1619 Broadway, New York 19, N. Y.
Copyright, 1948, by La Salle Music Publishers, Inc., 1619 Broadway, New York 19, N. Y.
International Copyright Secured Printed in U. S. A.
All Rights Reserved Including the Right of Public Performance for Profit

Hus - tle on, Bus - tle on, I've got the blues —
 'Lass - es' Cakes, Mam - my bakes, I taste them now —

Yearn - ing for my Swan - ee shore
 I can hear the dark - ies croon

Broth - er if you on - ly knew
 I'll see my sweet - ie once more

You'd want to hur - ry up to
 There's lots of kiss - ing in store

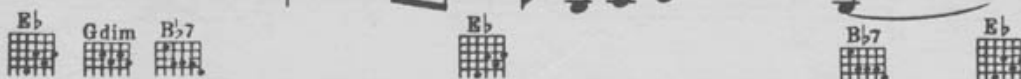
Chorus



Down yon-der some-one beck-ons to me, — Down



yon-der some-one reck-ons on me — I seem to see a race in



mem-o-ry — Be-tween the Natch-ez and the Rob-ert E. Lee, —



Swan-ee shore — I miss you more and more — Ev - 'ry

B^b7 **E^b** **B^b7**

day, My mam - my land, you're sim - ply grand. Down yon-der when the

cresc.

E^b **E^b7** **A^b** **E^b7** **A^b**

folks get the news, — Don't won-der at the Hul-la - ba - loos.

E^b

— There's dad-dy and mam - my, There's Eph-raim and Sam - my,

fz

F7 **B^b7** **E^b** **Gdim** **B^b7** **E^b**

Wait-in' down yon - der for me. me.

fz

ALL TIME HITS

LAZYBONES

Words and Music by
JOHNNY MERCER and
HOAGY CARMICHAEL



Copyright 1933 by Southern Music Publishing Co., 1619 Broadway, New York 19, N. Y.
International Copyright Secured Printed in U. S. A.

Take Me Back To My Boots And Saddle

Words and Music by
WALTER G. SAMUELS
LEONARD WHITCUP
TEDDY POWELL



Copyright 1935 by La Salle Music Publishers, Inc., 1619 Broadway, New York 19, N. Y.
International Copyright Secured Printed in U. S. A.

TOOLIE OOLIE DOOLIE

(The Yodel Polka)

English Lyric by
VAUGHN HORTON

(Nach Em Räge Schint Sunne)

Swiss Lyric and Music by
ARTUR BEUL



Copyright 1946 by Edition Walter Wild, Zürich, Switzerland
Copyright 1948 by CHAS. K. HARRIS Music Pub. Co. Inc., 1619 Broadway, New York 19, N. Y.
International Copyright Secured Printed in U. S. A.

Waiting For The Robert E. Lee

Lyric by
L. WOLFE GILBERT

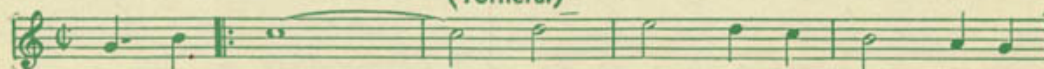
Music by
LEWIS F. MUIR



Copyright 1939 by LA SALLE MUSIC PUBLISHERS, INC., 1619 Broadway, New York 19, N. Y.
International Copyright Secured

J'attendrai

(Tornerai)



Copyright 1938 by P. Leonardi, Milano, Italy
Publication Rights Controlled by Southern Music Publishing Co., Inc., 1619 Broadway, New York 19, N. Y., International Copyright Secured,
for all countries in the Western Hemisphere.

Complete Copies May Be Secured At Your Local Dealer

SOLE SELLING AGENTS

SOUTHERN MUSIC PUBLISHING CO., Inc.
1619 Broadway New York, N. Y.