

Maine History

Volume 35
Number 1 *Issues 1-2; Washburn Memorial
Library, Third Annual Washburn Humanities
Conference, Livermore, June 9, 1995*

Article 1

7-1-1995

Journal Cover and TOC

Maine Historical Society

Follow this and additional works at: <https://digitalcommons.library.umaine.edu/mainehistoryjournal>

Recommended Citation

Maine Historical Society, . "Journal Cover and TOC." *Maine History* 35, 1 (1995).
<https://digitalcommons.library.umaine.edu/mainehistoryjournal/vol35/iss1/1>

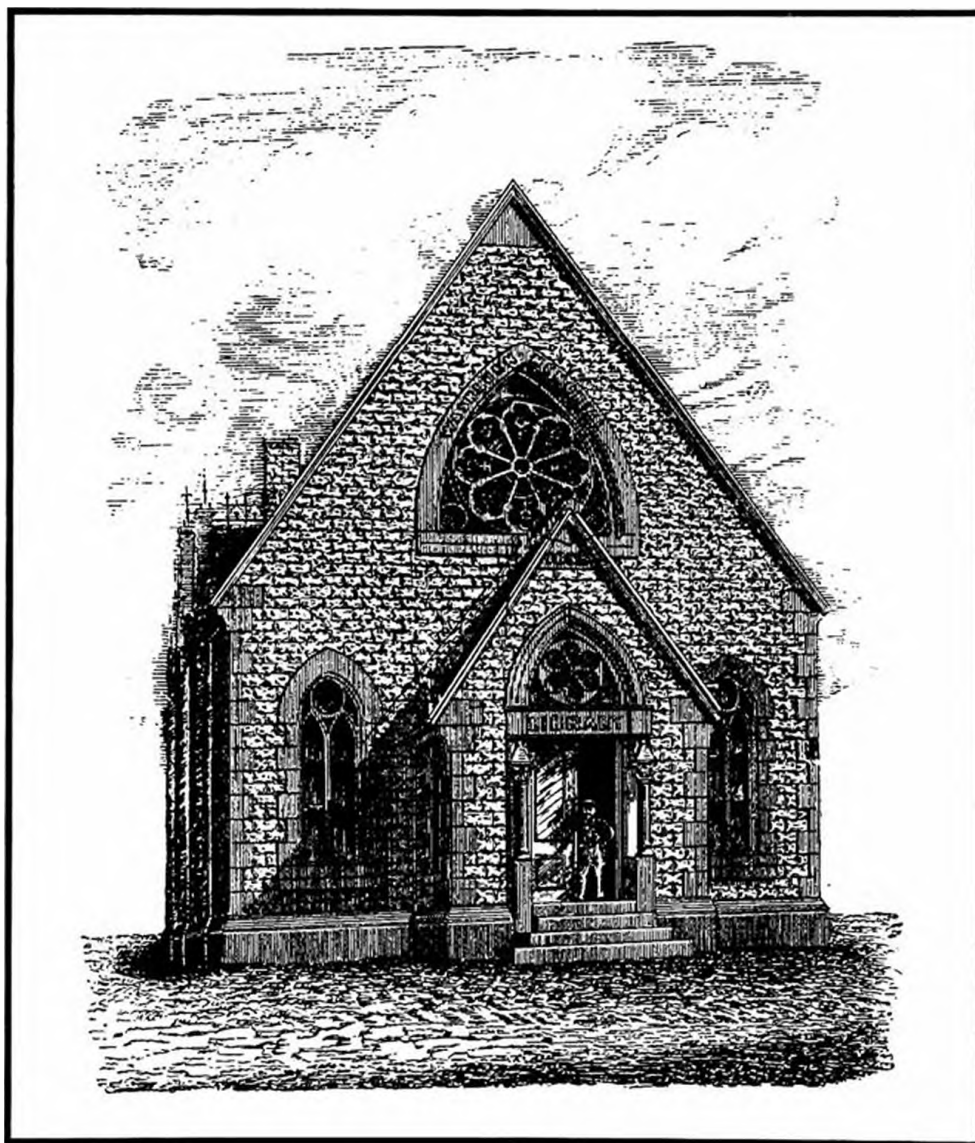
This Front Matter is brought to you for free and open access by DigitalCommons@UMaine. It has been accepted for inclusion in Maine History by an authorized administrator of DigitalCommons@UMaine. For more information, please contact um.library.technical.services@maine.edu.



MAINE HISTORY

Vol. 35, Nos. 1 & 2

Summer-Fall 1995



**Washburn Memorial Library
Third Annual Washburn Humanities Conference
Livermore, June 9, 1995**

Editor
RICHARD W. JUDD

Editorial Associates

**ELIZABETH HEDLER
LORI HILDEBRANDT
BRYAN MURRAY**

**LANCE PARADIS
KIMBERLY SEBOLD**

EDITORIAL BOARD

Chairman

ROBERT H. BABCOCK, UNIVERSITY OF MAINE

**EMERSON BAKER
YORK INSTITUTE
DYER LIBRARY**

**STEPHEN HORNSBY
CANADIAN-AMERICAN CENTER
UNIVERSITY OF MAINE**

**JOYCE BUTLER
BRICK STORE MUSEUM**

**STANLEY R. HOWE,
BETHEL HISTORICAL SOCIETY**

**EDWIN A. CHURCHILL
MAINE STATE MUSEUM**

**ARTHUR M. JOHNSON
UNIVERSITY OF MAINE
EMERITUS**

**RICHARD CONDON
UNIVERSITY OF MAINE
AT FARMINGTON**

**JAMES LEAMON
BATES COLLEGE**

**JOSEPH CONFORTI
NEW ENGLAND STUDIES
UNIVERSITY OF SOUTHERN MAINE**

**SARAH MCMAHON
BOWDOIN COLLEGE**

**JACQUES DOWNS
UNIVERSITY OF NEW ENGLAND**

**HARALD PRINS
KANSAS STATE UNIVERSITY**

**JOEL EASTMAN
UNIVERSITY OF SOUTHERN MAINE**

**ALICE R. STEWART
UNIVERSITY OF MAINE
EMERITUS**

**GRETCHEN FAULKNER
HUDSON MUSEUM
UNIVERSITY OF MAINE**

**JAMES B. VICKERY
BANGOR**

**GREGORY P. GALLANT
MARGARET CHASE SMITH LIBRARY**

Book Review Editor

STANLEY R. HOWE

(Send book review inquiries to Stanley R. Howe, Director, Bethel Historical Society, Dr. Moses Mason House, Bethel, ME 04217)

The *Maine Historical Society Quarterly* is published at 170 Stevens Hall, University of Maine at Orono, Orono, Maine 04469, and is received by 2015 members and 135 libraries.

The Maine Historical Society assumes no responsibility for the opinions and interpretations expressed by its contributors.

The articles appearing in the *Quarterly* are abstracted in *Historical Abstracts and America: History and Life*, published by the American Bibliographic Center.

MAINE HISTORY

Vol. 35 No. 1 & 2

Summer-Fall 1995

ARTICLES

- INTRODUCTORY REMARKS AT THE THIRD ANNUAL WASHBURN
HUMANITIES CENTER CONFERENCE
Ron Kley 2
- "THE ACQUISITION OF WEALTH, OR OF A COMFORTABLE
SUBSISTENCE": THE CENSUS OF 1800 AND THE YANKEE
MIGRATION TO MAINE, 1760-1825
Jamie H. Eves 6
- MAINE MIGRATIONS: ARTHUR AND HAROLD SEWALL IN THE
PACIFIC
Paul Burlin 26
- NAVIGATING WOMEN: EXPLORING THE ROLES OF NINETEENTH-
CENTURY NEW ENGLAND SAILING WIVES
Constance Anne Fournier 46
- ELIHU B. WASHBURNE: WESTWARD MIGRATION IN ANTEBELLUM
AMERICA
Timothy R. Mahoney 62

BOOK REVIEWS

- A HISTORY OF MAINE BUILT AUTOMOBILES, 1834-1934
By Richard and Nancy Fraser *Joel Webb Eastman* 82
- CROSSING LINES: HISTORIES OF JEWS AND GENTILES IN THREE
COMMUNITIES
By Judith Goldstein *Celeste DeRoche* 84
- REVOLUTION DOWNEAST: THE WAR FOR AMERICAN
INDEPENDENCE
By James S. Leamon *Robert M. York* 87
- NIGHT BOAT TO NEW ENGLAND
By Edwin L. Dunbaugh *Randall H. Bennett* 91

COVER ILLUSTRATION: Dedicated in 1885, the Washburn Memorial Library hosted the Third Annual Washburn Humanities Conference this summer in June 1995. The broad scope of the conference theme, "Migrations Into, Out From, and Within Northern New England," is reflected in the papers published in this issue. Jamie Eves discusses the pioneering migrants to the Penobscot, Kennebec and Androscoggin valleys, while Paul Burlin and Constance Fournier tell us about New Englanders who left the region for the Pacific. Timothy Mahoney looks at one notable Maine emigrant – Elihu Washburne – and explores the process of forging a new identity in the class-stratified society of the middle western frontier.

Cover illustration from *Dedicatory Exercises of the Washburn Memorial Library* (Chicago, 1885).