

8-1906

Limestone, 1906

Sanborn Map Company

Follow this and additional works at: https://digitalcommons.library.umaine.edu/me_sanbornmaps

 Part of the [Geography Commons](#), and the [History Commons](#)

Recommended Citation

Sanborn Map Company, "Limestone, 1906" (1906). *Sanborn Maps of Maine*. 230.
https://digitalcommons.library.umaine.edu/me_sanbornmaps/230

This Book is brought to you for free and open access by DigitalCommons@UMaine. It has been accepted for inclusion in Sanborn Maps of Maine by an authorized administrator of DigitalCommons@UMaine. For more information, please contact um.library.technical.services@maine.edu.

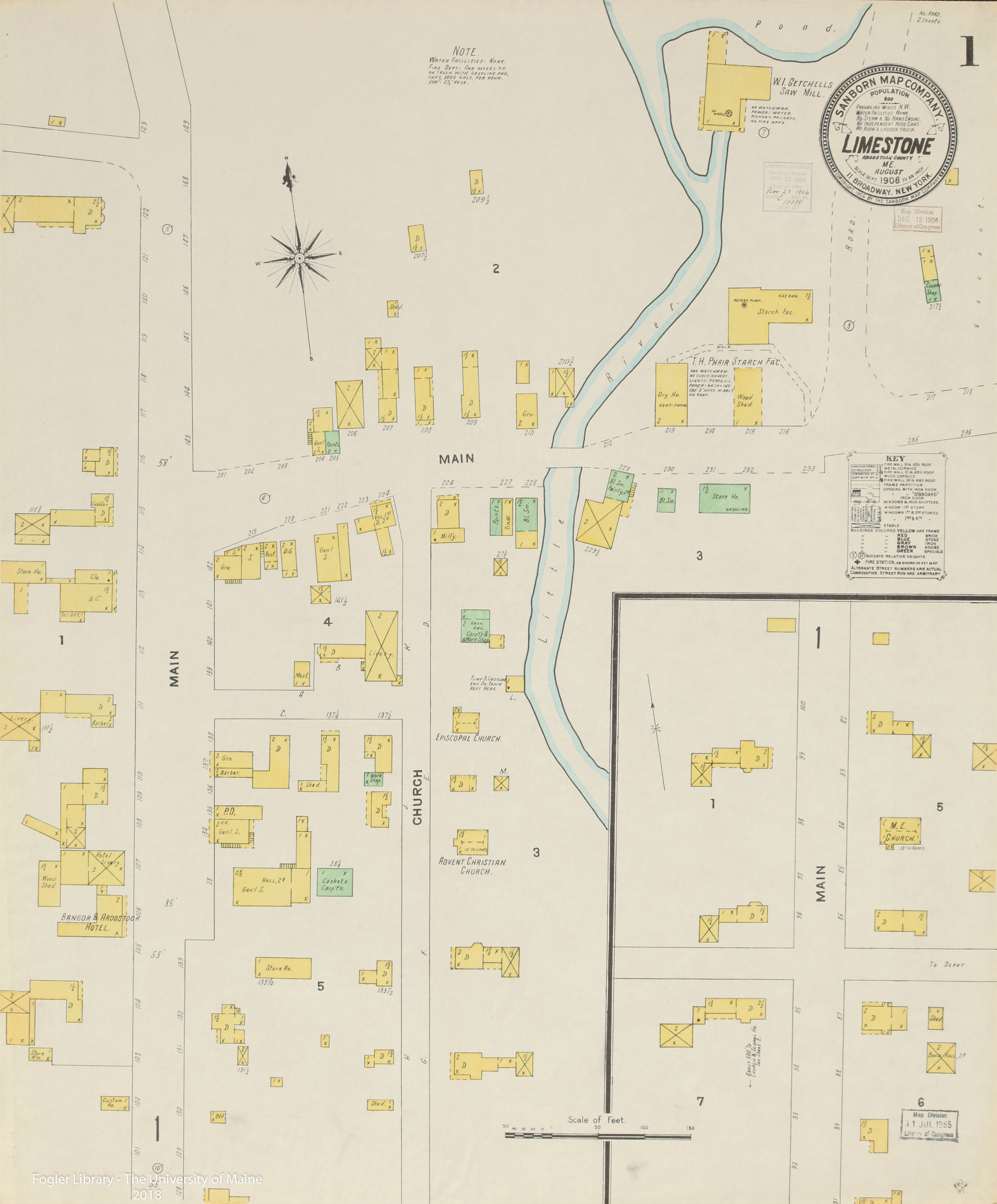
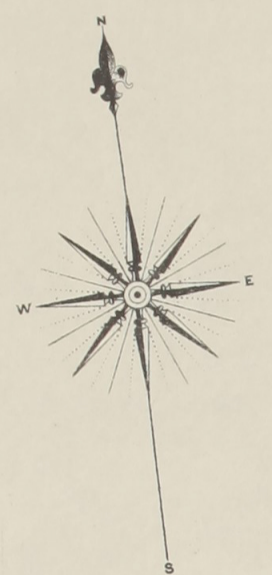
NOTE.
WATER FACILITIES: NONE.
FIRE DEPT: ONE MYERS P.P.
ON TRUCK WITH GASOLINE ENG.
CAPTY. 3000 GALS. PER HOUR.
500' 2 1/2" HD 2 1/2".

SANBORN MAP COMPANY
POPULATION 800
PREVAILING WINDS N.W.
WATER FACILITIES: NONE
NO STEAM & NO HAND ENGINE
NO INDEPENDENT HOSE CART
NO HOOK & LADDER TRUCK

LIMESTONE
ARROSTOOK COUNTY
ME.
AUGUST 1908 TO AN INCH
1" BROADWAY, NEW YORK

Map Division
DEC 12 1906
Library of Congress

LIBRARY OF CONGRESS
Two Copies Received
NOV 27 1906
Copyright Entry
Nov 27 1906
CLASS. C. 10099
COPY 2



KEY

--- FIRE WALL 6 IN. ASBY ROOF
--- METAL CORNICE
--- FIRE WALL 12 IN. ASBY ROOF
--- CORRUGATED IRON ROOF
--- FIRE WALL 18 IN. ASBY ROOF
--- FRAME PARTITION
--- OPENING WITH IRON DOOR
--- "STANDARD"
--- IRON DOOR
--- WINDOWS & IRON SHUTTERS
--- WINDOW - 1ST STORY
--- WINDOWS 1ST & 2ND STORIES
--- 2ND & 4TH

--- STABLE
--- BUILDINGS COLORED YELLOW ARE FRAME
--- RED BRICK
--- BLUE STONE
--- GRAY IRON
--- BROWN ADOBÉ
--- GREEN SPECIALS

(S) (N) INDICATE RELATIVE HEIGHTS
--- FIRE STATION, AS SHOWN ON KEY MAP
--- ALTERNATE STREET NUMBERS ARE ACTUAL
--- CONSECUTIVE STREET NOS ARE ARBITRARY

