

9-1912

Island Falls, 1912

Sanborn Map Company

Follow this and additional works at: https://digitalcommons.library.umaine.edu/me_sanbornmaps



Part of the [Geography Commons](#), and the [History Commons](#)

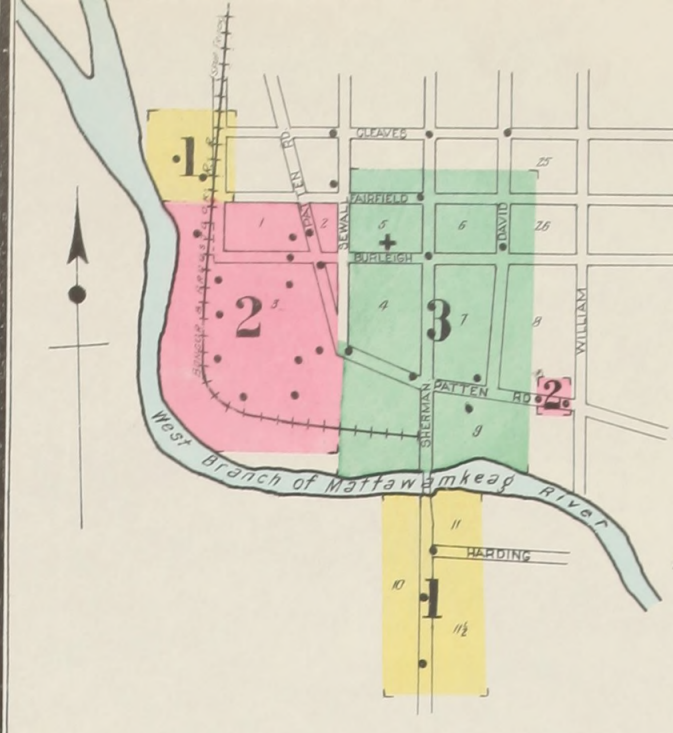
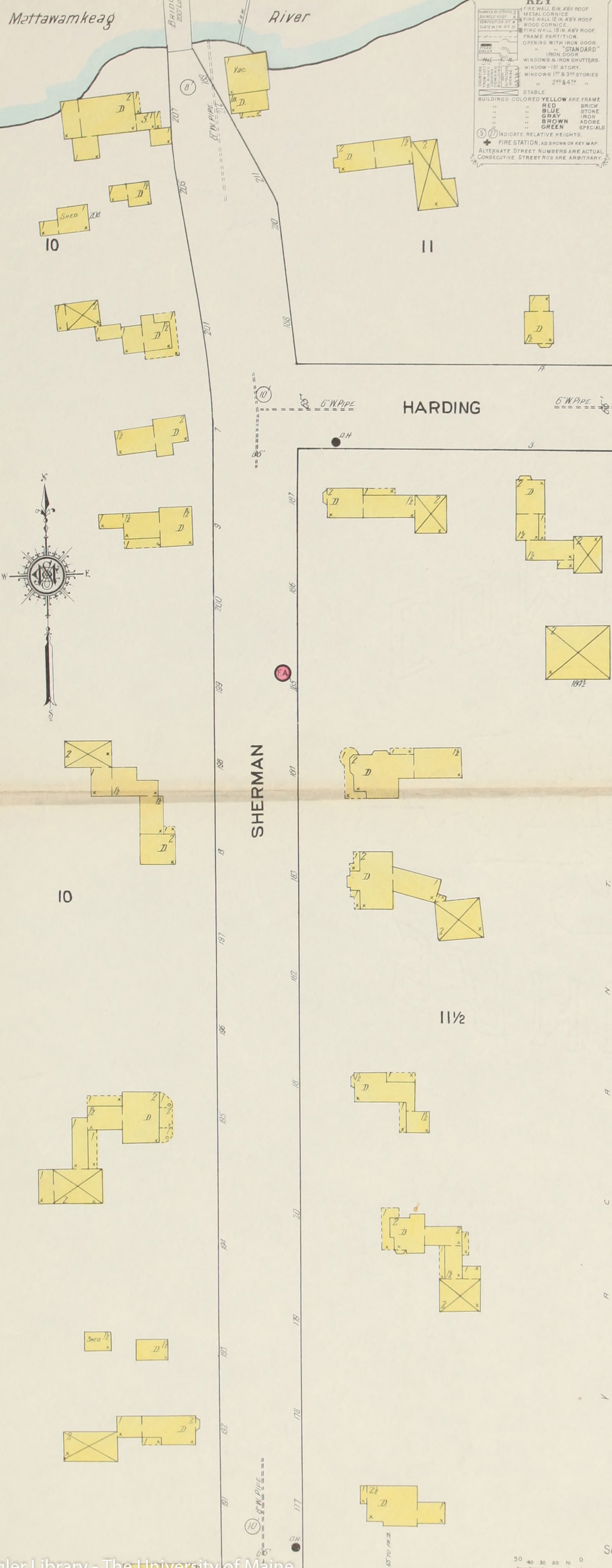
Recommended Citation

Sanborn Map Company, "Island Falls, 1912" (1912). *Sanborn Maps of Maine*. 188.
https://digitalcommons.library.umaine.edu/me_sanbornmaps/188

This Book is brought to you for free and open access by DigitalCommons@UMaine. It has been accepted for inclusion in Sanborn Maps of Maine by an authorized administrator of DigitalCommons@UMaine. For more information, please contact um.library.technical.services@maine.edu.



© C.F. 20839



WATER FACILITIES
 Built in 1910, owned by Island Falls Water Co., gravity system, water pumped from Upper Brook to reservoir - located 1/2 mile E. of P.O. & 190' above st. at that point - Capacity, 500,000 gals. - Average pressure 80 lbs. per sq. inch. - Water pumped to reservoir by 1 Electric pump 7' x 8' & 1 Smith-Vale pump, 7' x 5' x 10", located 1/2 mile E. of P.O. 5 1/2 miles 5" to 10" cast-iron water pipe. - 26 double hydrants.

FIRE DEPT.
 Volunteer, 16 men - 2 hose reels, 500' 2 1/2" hose on each. - Two 40 gal. chem. ends - 1000' 2 1/2" hose in hose hos. as shown. - All apparatus drawn by hand. - Elec. fire alarm system, 4 boxes, alarm sounded by whistle on tannery. - No fire limits. - Streets partly paved. - Public lights electric.

INDEX.

SPECIALS.	SHEET	HOWARD AXE CO.	SHEET
C	3	Hunt, F. W., & Co., Tannery,	2
E	3	Katahdin House,	2
F	3	Masonic Hall,	3
H	2	Mattawamkeag Lumber Co., Saw and Planing Mill,	1
		Post Office,	3
		Public School,	2

