

9-1898

Fort Fairfield, 1898

Sanborn-Perris Map Co.

Follow this and additional works at: https://digitalcommons.library.umaine.edu/me_sanbornmaps

 Part of the [Geography Commons](#), and the [History Commons](#)

Recommended Citation

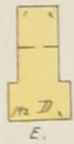
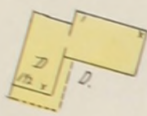
Sanborn-Perris Map Co., "Fort Fairfield, 1898" (1898). *Sanborn Maps of Maine*. 195.
https://digitalcommons.library.umaine.edu/me_sanbornmaps/195

This Book is brought to you for free and open access by DigitalCommons@UMaine. It has been accepted for inclusion in Sanborn Maps of Maine by an authorized administrator of DigitalCommons@UMaine. For more information, please contact um.library.technical.services@maine.edu.

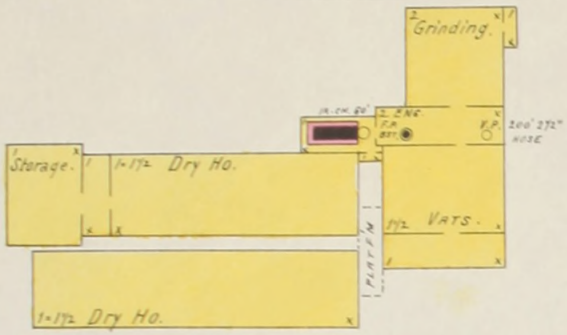
NO EXPOSURE ANY SIDE.

DEC 1 1898

25



RIVERSIDE AV.



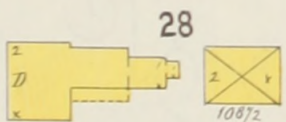
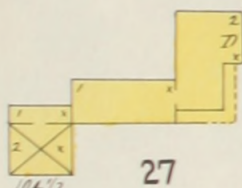
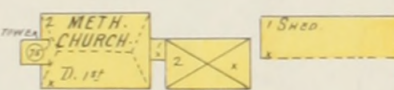
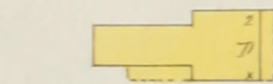
AROOSTOOK VALLEY STARCH CO.

NIGHT WATCHMAN & CLOCK -
POWER & REAR: STEAM -
FUEL: WOOD. LIGHTS: KEROSENE.
WORTHINGTON P.M. & 200' 2 1/2" HOSE.

Aroostook River

GREEN ST.

1/4 Mile N.W. of P.O.



27

28

HIGH

NO EXPOSURE

NOTE.

GRAVELLY SYSTEM OF WATER WORKS 1 1/2 MILES
E. OF P.O. 120' AVY. MAIN ST. PRESSURE AT P.O.
42 LBS. PER SQ. IN. & HOSE CO. 2 & 3,000 2 1/2" HOSE.
20 DBL. HYDR.

INDEX.

SPECIALS.

ALPHABET	ADDRESS
A	Aroostook Valley Starch Co.,..... 1
B	B. & A. R. R. Depot,..... 1
C	Canadian Pacific R. R. Depot,..... 2
	Catholic Church,..... 2
	Congregational Church,..... 3
E	Edwards, D. E., Grist Mill,..... 2
	Elm Block,..... 3
	Exchange Hotel,..... 3
H	Haines, W. C., Saw Mill,..... 2
	High School,..... 2
	Howe, A., Shingle Mill,..... 4
M	Methodist Church,..... 1
P	Peterson, J., Carriage Factory,..... 4
S	St. Paul's Episcopal Church,..... 2
	Stevens Lumber Co.,..... 4
V	Varney, H. W., Planing Mill,..... 4
W	Windsor Hotel,..... 3

SANBORN - PERRIS MAP CO. LIMITED
 117 & 119 Broadway
 NEW YORK

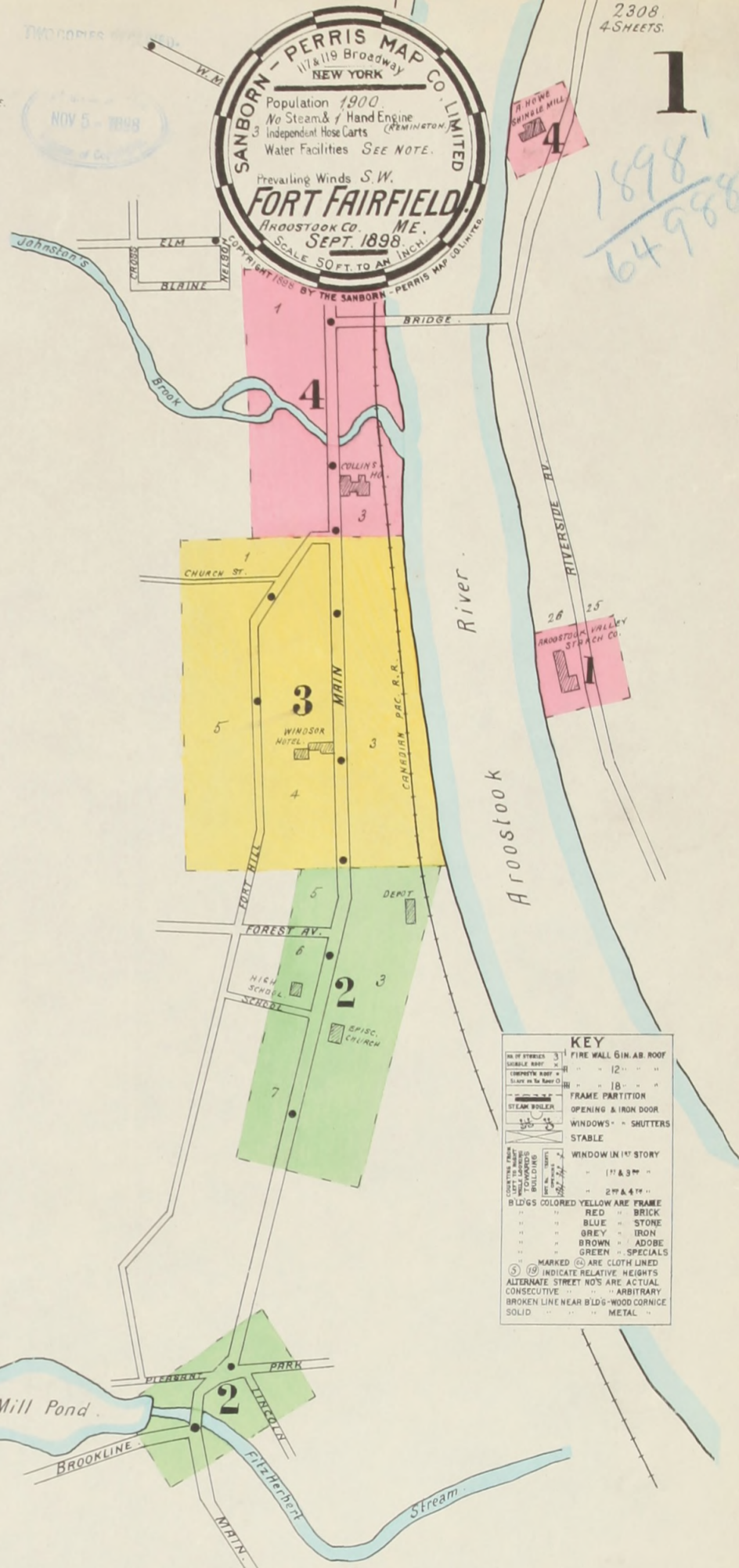
Population 1900
 No Steam & Hand Engine (Remington)
 Independent Hose Lanes
 Water Facilities SEE NOTE.

Prevailing Winds S.W.
FORT FAIRFIELD
 AROOSTOOK CO. ME.
 SEPT. 1898
 SCALE 50 FT. TO AN INCH

NOV 5 - 1898

2308
4 SHEETS

1898
64988



KEY

1 FIRE WALL 6 IN. AB. ROOF
 2 12" - 12" -
 3 18" - 18" -
 4 FRAME PARTITION
 5 OPENING & IRON DOOR
 6 WINDOWS - SHUTTERS
 7 STABLE
 8 WINDOW IN 1ST STORY
 9 2 1/2" & 4 1/2" -
 10 11" & 9" -

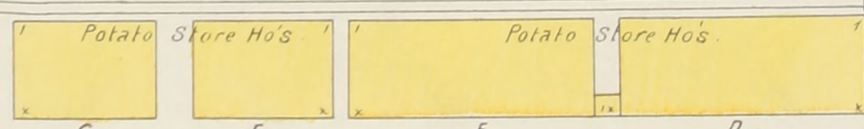
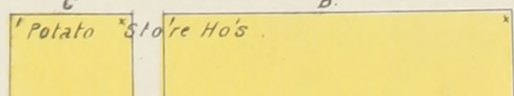
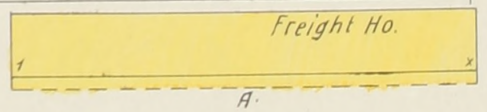
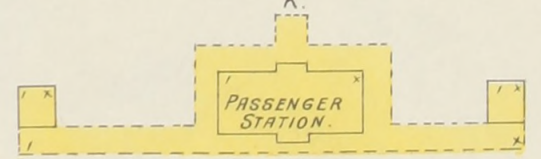
BLDGS COLORED YELLOW ARE FRAME
 RED - BRICK
 BLUE - STONE
 GREY - IRON
 BROWN - ADORNE
 GREEN - SPECIALS

(S) MARKED (S) ARE CLOTH LINED
 (H) INDICATE RELATIVE HEIGHTS
 ALTERNATE STREET NOS ARE ACTUAL
 CONSECUTIVE - ARBITRARY
 BROKEN LINE NEAR BLDG - WOOD CORNICE
 SOLID - METAL

DEPOT



BANGOR & AROOSTOOK R.R.



1/3 Mile N.W. of P.O.

Scale of Feet