

11-1893

Fort Fairfield, 1893

Sanborn-Perris Map Co.

Follow this and additional works at: https://digitalcommons.library.umaine.edu/me_sanbornmaps

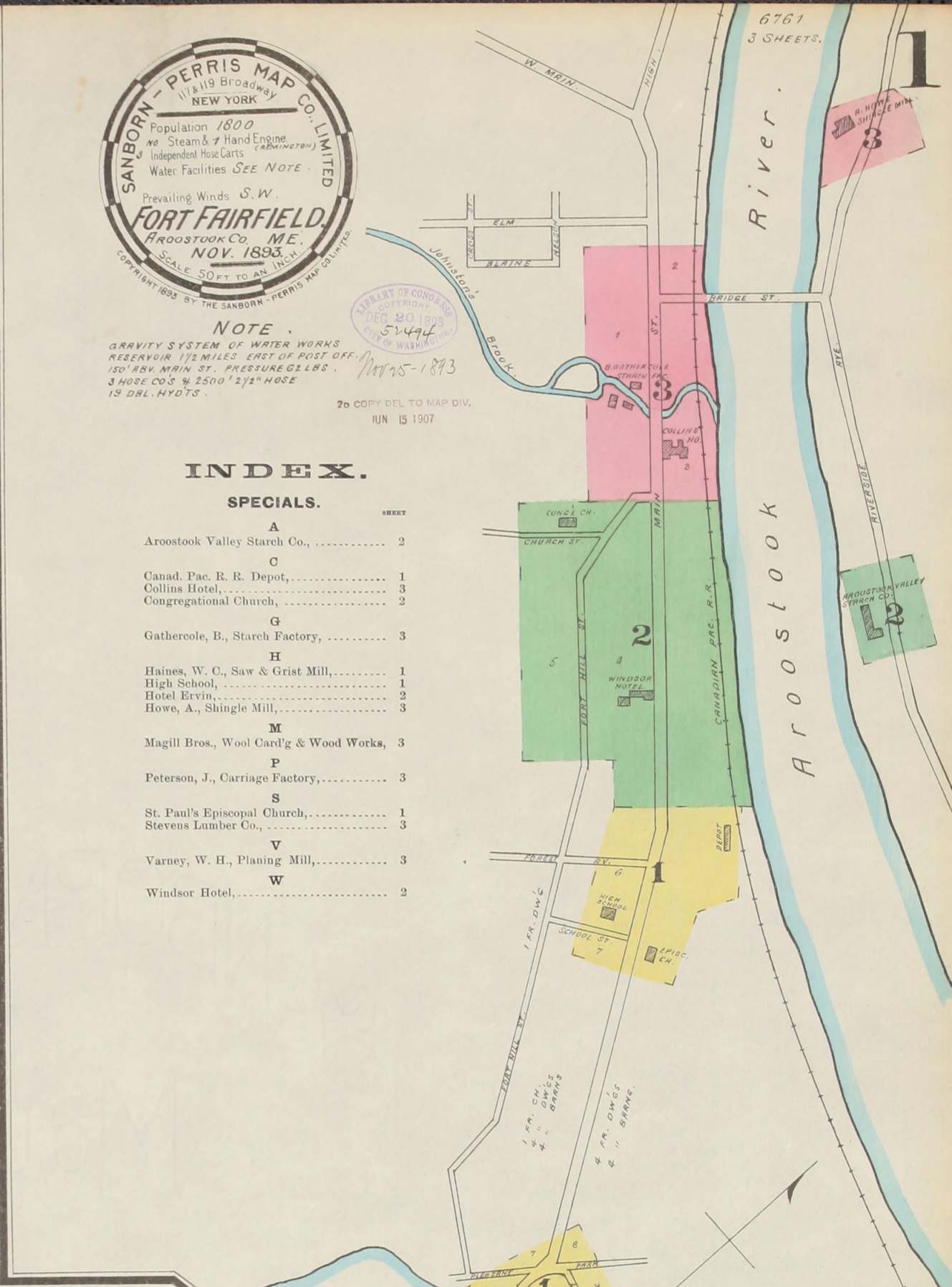
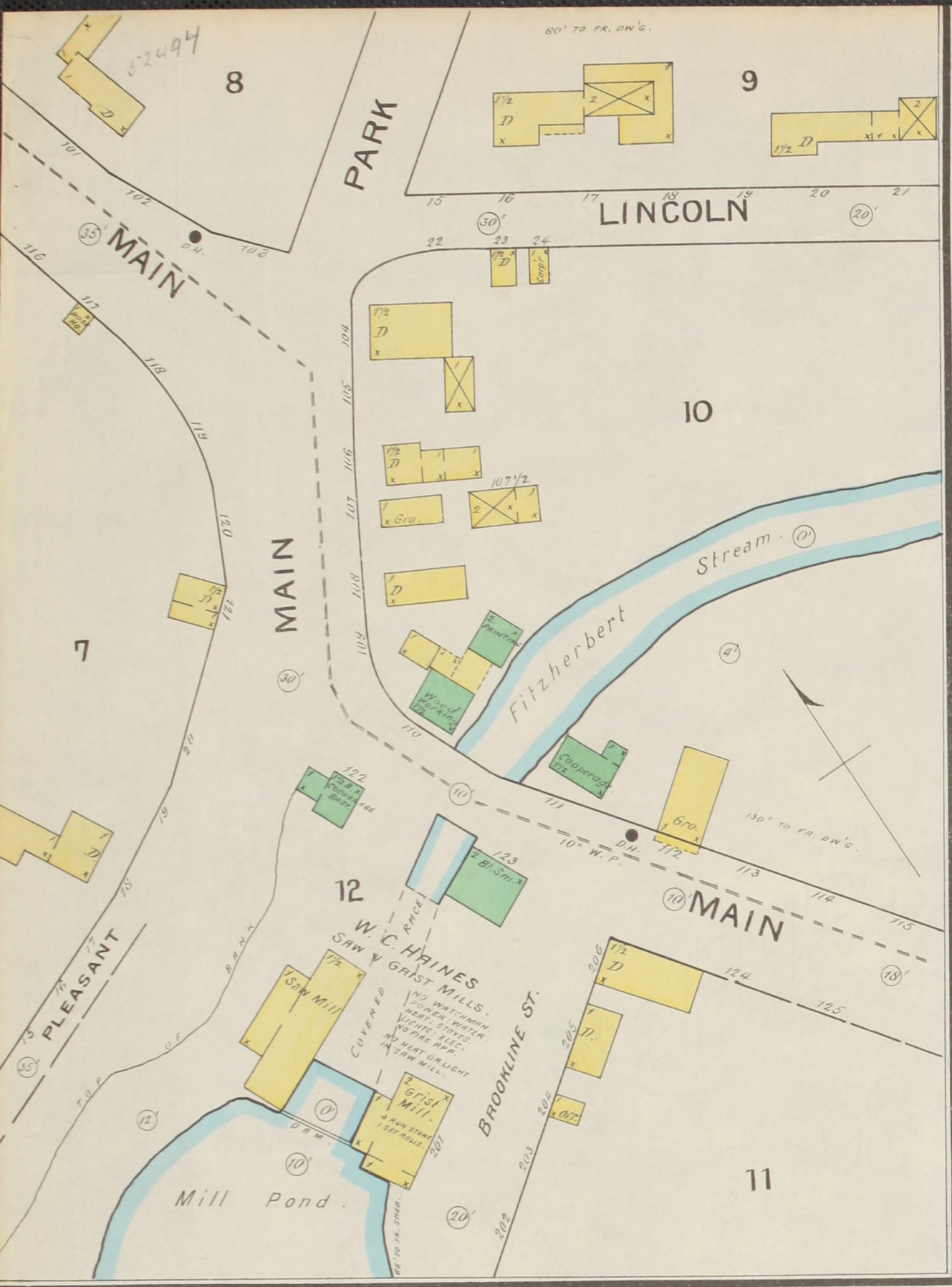


Part of the [Geography Commons](#), and the [History Commons](#)

Recommended Citation

Sanborn-Perris Map Co., "Fort Fairfield, 1893" (1893). *Sanborn Maps of Maine*. 196.
https://digitalcommons.library.umaine.edu/me_sanbornmaps/196

This Book is brought to you for free and open access by DigitalCommons@UMaine. It has been accepted for inclusion in Sanborn Maps of Maine by an authorized administrator of DigitalCommons@UMaine. For more information, please contact um.library.technical.services@maine.edu.



NOTE
GRAVITY SYSTEM OF WATER WORKS
RESERVOIR 1 1/2 MILES EAST OF POST OFF.
150' RDV. MAIN ST. PRESSURE 62 LBS.
3 HOSE CO'S 1/2 2500' 2 1/2" HOSE
19 DBL. HYDTS.

LIBRARY OF CONGRESS
COPYRIGHT
DEC 20 1905
57494
NOV 15 1893

2d COPY DEL TO MAP DIV.
JUN 15 1907

INDEX.

SPECIALS.

LETTER	DESCRIPTION	BLK
A	Aroostook Valley Starch Co.,	2
C	Canad. Pac. R. R. Depot,	1
C	Congregational Church,	2
G	Gathercole, B., Starch Factory,	3
H	Haines, W. C., Saw & Grist Mill,	1
H	High School,	1
H	Hotel Ervin,	2
H	Howe, A., Shingle Mill,	3
M	Magill Bros., Wool Card'g & Wood Works,	3
P	Peterson, J., Carriage Factory,	3
S	St. Paul's Episcopal Church,	1
S	Stevens Lumber Co.,	3
V	Varney, W. H., Planing Mill,	3
W	Windsor Hotel,	2

I HAVE EXAMINED THIS SURVEY AND FIND IT COMPLETE AND CORRECT.
W. O. Perry

