

8-1906

Bridgewater, 1906

Sanborn Map Company

Follow this and additional works at: https://digitalcommons.library.umaine.edu/me_sanbornmaps

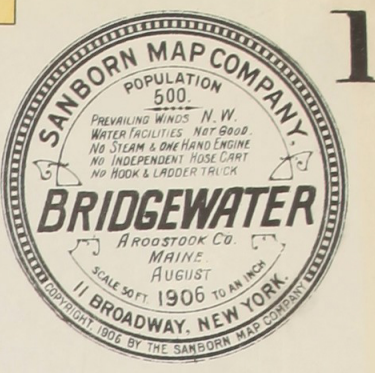


Part of the [Geography Commons](#), and the [History Commons](#)

Recommended Citation

Sanborn Map Company, "Bridgewater, 1906" (1906). *Sanborn Maps of Maine*. 178.
https://digitalcommons.library.umaine.edu/me_sanbornmaps/178

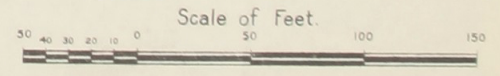
This Book is brought to you for free and open access by DigitalCommons@UMaine. It has been accepted for inclusion in Sanborn Maps of Maine by an authorized administrator of DigitalCommons@UMaine. For more information, please contact um.library.technical.services@maine.edu.



NOTE.
FIRE DEPART. VOLUNTEER CO. 20 MEN PART PAID.
ONE HAND ENGINE, 300' 2 1/2" HOSE.

LIBRARY OF CONGRESS
The Library of Congress
DEC 8 1906
Photoduped Copy
JUL 8 1966
CLASS. C 10134
COPY FC

Map Division
JUL 10 1965
Library of Congress



KEY

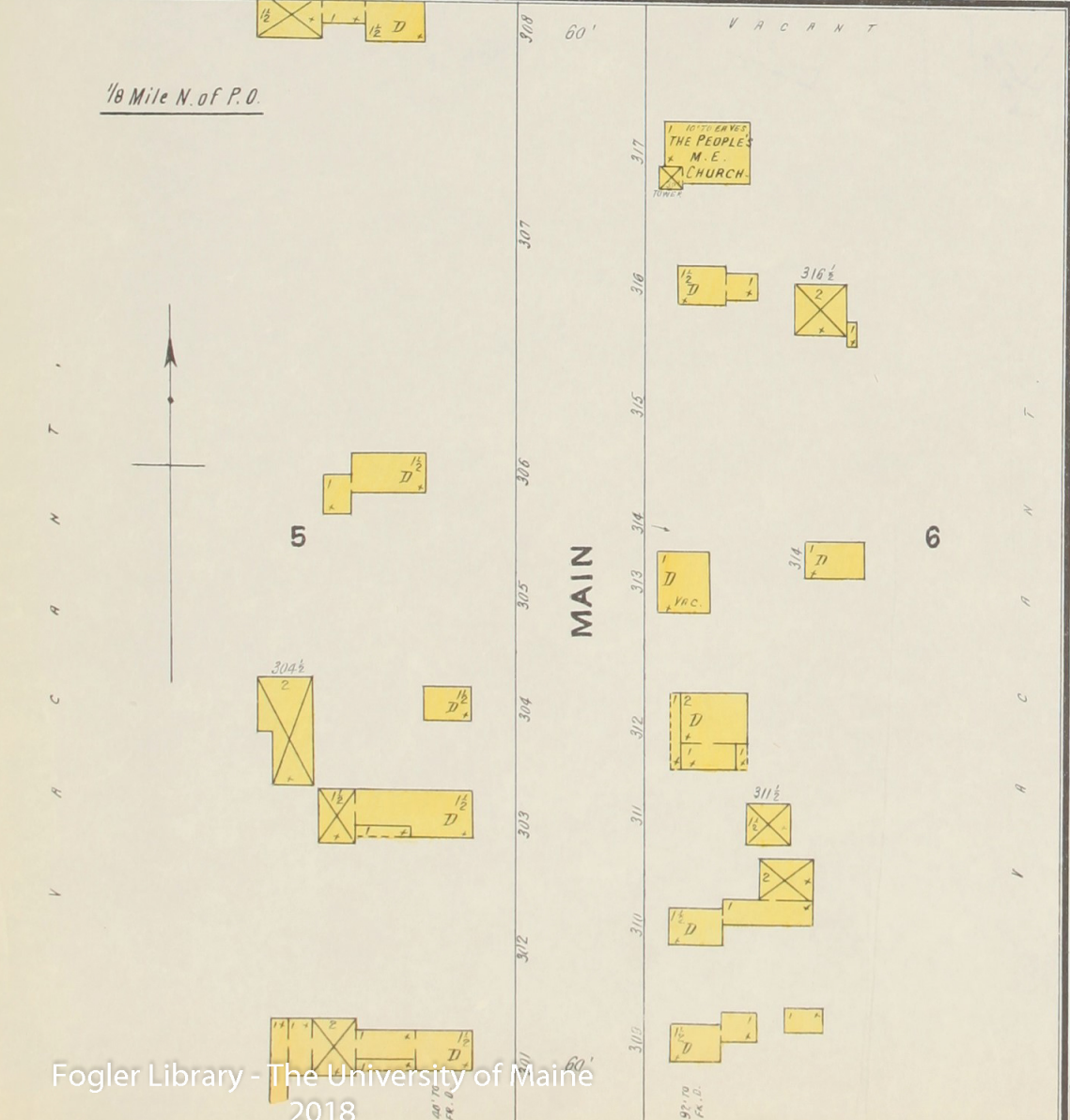
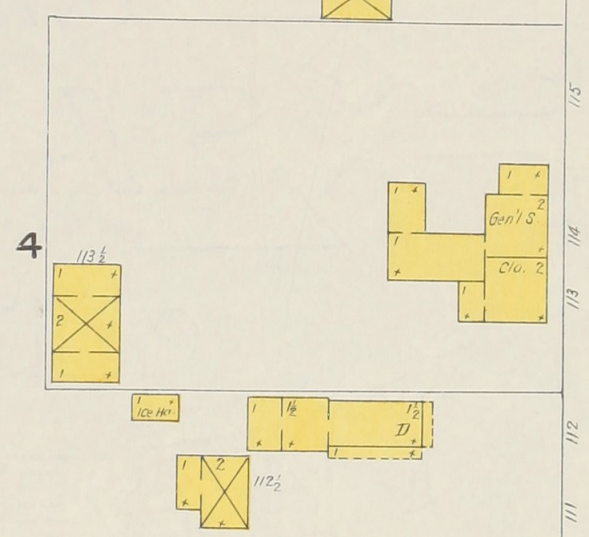
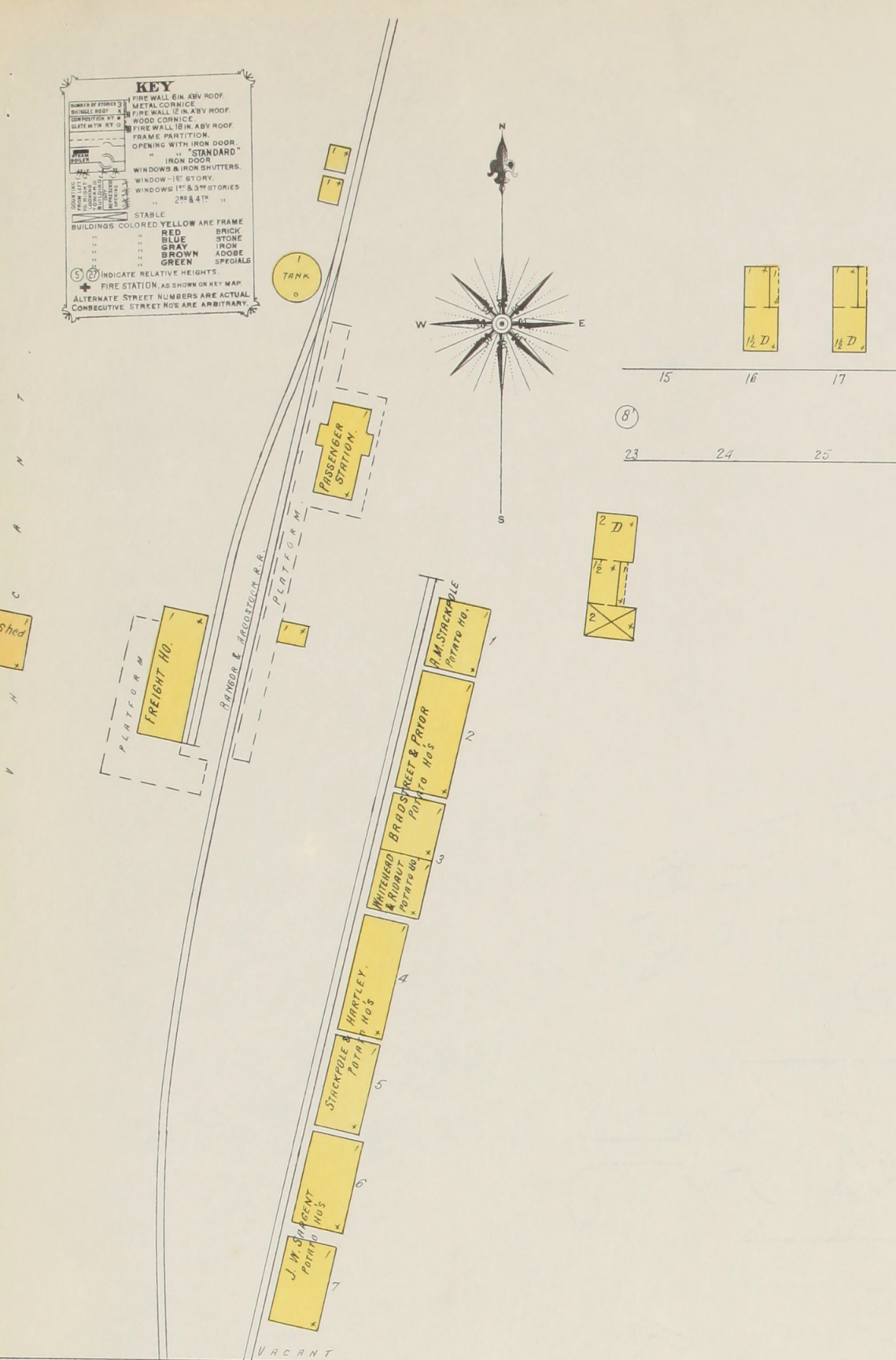
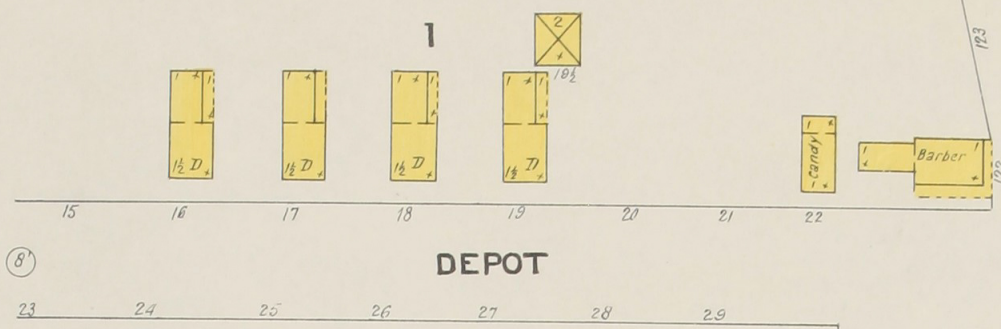
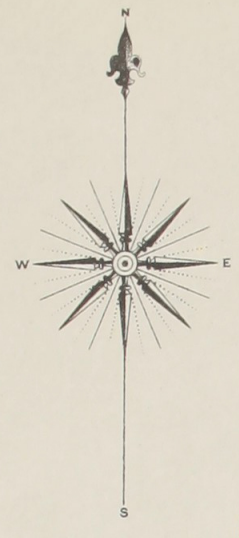
- FIRE WALL 6 IN. ASBV ROOF
- METAL CORNICE
- FIRE WALL 2 IN. ASBV ROOF
- WOOD CORNICE
- FIRE WALL 18 IN. ASBV ROOF
- FRAME PARTITION
- OPENING WITH IRON DOOR
- IRON DOOR
- WINDOWS & IRON SHUTTERS
- WINDOW - 1ST STORY
- WINDOWS - 1ST & 3RD STORIES
- 2ND & 4TH "

STABLE

- YELLOW ART. FRAME
- RED BRICK
- BLUE STONE
- GRAY IRON
- BROWN ADOBÉ
- GREEN SPECIALS

(S) INDICATE RELATIVE HEIGHTS.

FIRE STATION AS SHOWN ON KEY MAP.
ALTERNATE STREET NUMBERS ARE ACTUAL.
CONSECUTIVE STREET NOS. ARE ARBITRARY.



MAIN

MAIN