

The University of Maine

DigitalCommons@UMaine

Kendall Photo Albums

Kendall Albums 1930s

Oct 10th 1935

Topsham Fair, Thursday, October 10, 1935

Sagadahoc Agricultural Horticultural Society

Follow this and additional works at: https://digitalcommons.library.umaine.edu/kendall_albums



Part of the [Agricultural and Resource Economics Commons](#), and the [United States History Commons](#)
Gift of Wilbur Hammond, Jean Bryer, and Roger and Mindy Smith, August 2003.

Restrictions and additional information contact Special Collections Department, University of
Maine 5729 Fogler Library, Orono, ME 04469-5729 or call (207) 581-1686.

Recommended Citation

Sagadahoc Agricultural Horticultural Society, "Topsham Fair, Thursday, October 10, 1935" (1935). *Kendall Photo Albums*. 29.

https://digitalcommons.library.umaine.edu/kendall_albums/1930s/1935/29

This Race Program is brought to you for free and open access by DigitalCommons@UMaine. It has been accepted for inclusion in Kendall Photo Albums by an authorized administrator of DigitalCommons@UMaine. For more information, please contact um.library.technical.services@maine.edu.

TOPSHAM FAIR

THURSDAY, OCTOBER 10, 1935

SAMUEL WOODWARD, President L. J. SWETLAND, Treasurer

HARRY MCKENNEY, Starter

DR. J. A. STEVENS, Presiding Judge

FRANK R. WITMAN, Director of Mutuels

L. P. MCCRACKEN, Race Secretary

PRICE FIFTEEN CENTS

First Race 1 Mile

FIRST HALF DAILY DOUBLE BRUNSWICK RECORD

Mutuel No.	Post and Arm No.	2.18 TROT	Driver and Colors	
5019	1	FOIL, b.g. H. C. Buzzell	Lovell brown and gray	3
5020	2	AURA, b.m. H. T. Wheelwright	Carpenter green and tan	1
5021	3	BOBELWYN, br.g. Sullivan & Mawhinney	Clukey mar. and green	7
5022	4	SETZER HANOVER, b.g. John T. Duffy	Duffy maroon and cream	5
5023	5	SISTER EXPRESS, b.m. Thos. Dow	Foye brown	8
5024	6	NANCY ARION, b.m. J. H. Randall	Day purple and gold	2
5025	7	DAY SPRING, b.s Frank Burke		6
5026	8	STANWOOD GUY, b.h. Thomas McNamara	McMinemon green	4

10⁰⁰

10^{1/2}

5.90
6.75

12.65

Pari-Mutuel Betting operated under supervision Maine Racing Commission

Today's is \$630.90

THE DAILY DOUBLE

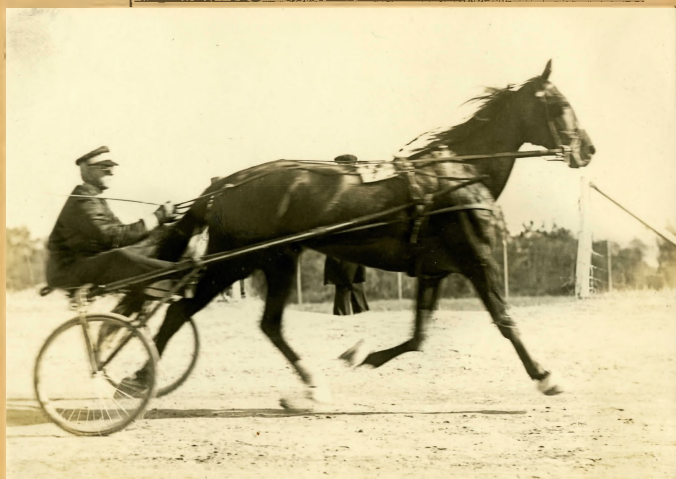
The Daily Double Play is on the first and third races but all tickets for the Double must be purchased prior to the running of the first race. The probable pay-offs on the Double will be announced and posted before the running of the third race. Keep your tickets on the Double until the official winning combination has been announced.

800

Second Race 1 Mi.

BOUCHER'S DINER 8.20

Mutuel No.	Post and Arm No.	2.25 Trot & Pace 16	Driver and Colors
5160	1	EDGAR LEE , b.g. A. H. Hayes	Gerow black and green
5161	2	ELJOTINE, br.m. F. G. Colburn	Colburn brown and green 2
5162	3	HARVEST HIGH, b.g. Miss Christine Brown	Brown brown 1
5163	4	MARGARET SIGNAL, br.m. John T. Duffy	Duffy maroon and cream 6
5164	5	TAFFETA, b.m. G. W. Gerow	Gerow black and green 5
5165	6	SENATRESS WORTHY, b.m. S. J. Luce	Pat'rson green and gold 4
5166	↓ 7	JANE EXPRESS, b.m. C. W. Proctor	Chellis 3



200

Third Race 1 Mi. 0**SECOND HALF DAILY DOUBLE**

Topsham Filling Station

Mutuel No.	Post and Arm No.	Free-for-all Trot 0934	Driver and Colors
5167	1	PLUCKY PLUTO, ch.g. C. E. Sheehan	Donnelly green 1
5168	2	ALLOWAY, b.g. S. A. Wathen	Wathen gold and brown 6
5169	3	JOHN ROWLAND, b.g. Rodney Wells	Day purple and gold 7
5170	4	CHESTNUT HARVESTER, b.g. Matherson & Crocley	Mason black and white 4
5171	5	PETER POKEY, ch.g. J. H. Randall	Jordan blue and white 5
5172	6	ALVIN GUY, b.g. H. C. Buzzell	Lovell brown and gray 3
5173	7	VOLUNTEER, b.g. J. C. Getchell	Donnelly green 2

Fourth Race 1 Mi.

BRUNSWICK RECORD

Mutuel No.	Post and Arm No.	2.18 Trot	Driver and Colors	
5174	1	BOBELWYN, br.g. Sullivan & Mawhinney	Clukey mar. and green	2
5175	2	SETZER HANOVER, b.g. John T. Duffy	Duffy maroon and cream	1
5176	3	DAY SPRING, b.s. Frank Burke		5
5177	4	NANCY ARION, b.m. J. H. Randall	Day purple and gold	4
5178	5	FOIL, b. g. H. C. Buzzell	Lovell brown and gray	8
5179	6	SISTER EXPRESS, b.m. Thos. Dow	Foye brown	7
5180	7	AURA, b.m. H. T. Wheelwright	Carpenter green and tan	3
5216	8	STANWOOD GUY, b.h. Thomas McNamara	McMinemon green	6

.11¹/₄

Fifth Race 1 Mi.

BOUCHER'S DINER

Mutuel No.	Post and Arm No.	2.25 Trot & Pace	Driver and Colors	
5181	1	ELJOTINE, br.m. F. G. Colburn	Colburn brown and green	3
5182	2	HARVEST HIGH, b.g. Miss Christine Brown	Brown brown	1
5183	3	EDGAR LEE , b.g. A. H. Hayes	Gerow black and green	
5184	4	MARGARET SIGNAL, br.m. John T. Duffy	Duffy maroon and cream	5
5185	5	SENATRESS WORTHY, b.m. S. J. Luce	Pat'rsen green and gold	6
5186	6	TAFFETA, b.m. G. W. Gerow	Gerow black and green	4
5187	7	JANE EXPRESS, b.m. C. W. Proctor	Chellis	2

.16¹/₄

Sixth Race 1 Mi.

Topsham Filling Station

Mutuel No.	Post and Arm No.	Free-for-all Trot	Driver and Colors
5188	1	VOLUNTEER, b.g. J. C. Getchell	Donnelly green 3
5189	2	PLUCKY PLUTO, ch.g. C. E. Sheehan	Donnelly green 2
5190	3	JOHN ROWLAND, b.g. Rodney Wells	Day purple and gold 4
5191	4	ALLOWAY, b.g. S. A. Wathen	Wathen gold and brown 1
5192	5	ALVIN GUY, b.g. H. C. Buzzell	Lovell brown and gray 5
5193	6	PETER POKEY, ch.g. J. H. Randall	Jordan blue and white 6
5194	7	CHESTNUT HARVESTER, b.g. Mason Matherson & Crocley	black and white 7

0834

Seventh Race 1 Mi.

BRUNSWICK RECORD

Mutuel No.	Post and Arm No.	2.18 Trot	Driver and Colors
5195	1	SISTER EXPRESS, b.m. Thos. Dow	Foye brown 8
5196	2	NANCY ARION, b.m. J. H. Randall	Day purple and gold 2
5197	3	FOIL, b.g. H. C. Buzzell	Lovell brown and gray 6
5198	4	DAY SPRING, b.s. Frank Burke	7
5199	5	SETZER HANOVER, b.g. John T. Duffy	Duffy maroon and cream 5
5200	6	BOBELWYN, br.g. Sullivan & Mawhinney	Clukey mar. and green 3
5201	7	AURA, b.m. H. T. Wheelwright	Carpenter green and tan 1
5217	8	STANWOOD GUY, bh. Thomas McNamara	McMinemon green 4

.12

Eighth Race 1 Mi.

BOUCHER'S DINER

Mutuel No.	Post and Arm No.	2.25 Trot & Pace	Driver and Colors	
5202	1	HARVEST HIGH, b.g. Miss Christine Brown	Brown brown	2
5203	2	SENATRESS WORTHY, b.m. S. J. Luce	Pat'rson green and gold	5
5204	3	EDGAR LEE , b.g. A. H. Hayes	Gerow black and green	
5205	4	TAFFETA, b.m. G. W. Gerow	Gerow black and green	4
5206	5	MARGARET SIGNAL, br.m. John T. Duffy	Duffy maroon and cream	6
5207	6	ELJOTINE, br.m. F. G. Colburn	Colburn brown and green	3
5208	7	JANE EXPRESS, b.m. C. W. Proctor	Chellis	1

.21

800

23.95
14.10
2.60
40.65

Ninth Race 1 Mi.

Topsham Filling Station

Mutuel No.	Post and Arm No.	Free-for-all Trot	Driver and Colors	
5209	1	PETER POKEY, ch.g. J. H. Randall	Jordan blue and white	2
5210	2	VOLUNTEER, b.g. J. C. Getchell	Donnelly green	3
5211	3	ALVIN GUY , b.g. H. C. Buzzell	Lovell brown and gray	5
5212	4	JOHN ROWLAND, b.g. Rodney Wells	Day purple and gold	1
5213	5	CHESTNUT HARVESTER, b.g. Matherson & Crocley	Mason black and white	6
5214	6	PLUCKY PLUTO, ch.g. C. E. Sheehan	Donnelly green	7
5215	7	ALLOWAY, b.g. S. A. Wathen	Wathen gold and brown	4

10 1/2

CHANGE AND INFORMATION BOOTH

For the convenience of the public, a change booth is at your service.

The management has provided an efficient man at the Information Window to facilitate the patrons in every way possible. He will render any explanation and assistance desired.

Please see that your Mutuel Ticket corresponds with the number on your program. No changes made after window closes.

All winning Pari-Mutuel Tickets are payable immediately after the race to which the ticket relates has been run and the winning horses announced and the odds displayed upon the Pay Board.

This Association will not be responsible for lost or destroyed tickets, and reserves the right to refuse payment of torn or mutilated tickets. See Mutuel Manager.

If there are any outstanding unpaid tickets at the close of this meeting, same will be redeemed within period of ninety days at offices of State Racing Commission, Augusta, Maine, otherwise, money will be forfeited and same will be returned to Topsham Fair Association.

WHEN A HORSE IS A STARTER

If while betting is in progress, a horse should be excused by the Stewards, because of accident or casualty before leaving for the post, the pooling is not affected thereby. The tickets purchased on the horse that has been declared are redeemed at their cost value, such amount being subtracted from the pool. If, however, a horse has left the paddock for the post it becomes a "starter" and all bets on it stand whether it starts or not.

In the event of a horse being excused by the Stewards, all bets recorded on the horse withdrawn, either Straight, Place or Show, will be refunded, but the amount bet will be included in the total of the pools, and any estimate as to the odds against any particular horse starting, must be calculated after the amount of the refund has been deducted from the total of the pools.
