

The University of Maine

DigitalCommons@UMaine

Marine Sciences Faculty Scholarship

School of Marine Sciences

11-22-2017

Two databases derived from BGC-Argo float measurements for marine biogeochemical and bio-optical applications

Emanuele Organelli
Sorbonne Universite

Marie Barbieux
Sorbonne Universite

Hervé Claustre
Sorbonne Universite

Catherine Schmechtig
Sorbonne Universite

Antoine Poteau
Sorbonne Universite

See next page for additional authors

Follow this and additional works at: https://digitalcommons.library.umaine.edu/sms_facpub



Part of the [Oceanography and Atmospheric Sciences and Meteorology Commons](#)

Repository Citation

Organelli, Emanuele; Barbieux, Marie; Claustre, Hervé; Schmechtig, Catherine; Poteau, Antoine; Bricaud, Annick; Boss, Emmanuel; Briggs, Nathan; Dall'Olmo, Giorgio; D'Ortenzio, Fabrizio; Leymarie, Edouard; Mangin, Antoine; Obolensky, Grigor; Penkerch, Christophe; Prieur, Louis; Roesler, Collin; Serra, Romain; Uitz, Julia; and Xing, Xiaogang, "Two databases derived from BGC-Argo float measurements for marine biogeochemical and bio-optical applications" (2017). *Marine Sciences Faculty Scholarship*. 176.
https://digitalcommons.library.umaine.edu/sms_facpub/176

This Article is brought to you for free and open access by DigitalCommons@UMaine. It has been accepted for inclusion in Marine Sciences Faculty Scholarship by an authorized administrator of DigitalCommons@UMaine. For more information, please contact um.library.technical.services@maine.edu.

Authors

Emanuele Organelli, Marie Barbieux, Hervé Claustre, Catherine Schmechtig, Antoine Poteau, Annick Bricaud, Emmanuel Boss, Nathan Briggs, Giorgio Dall'Olmo, Fabrizio D'Ortenzio, Edouard Leymarie, Antoine Mangin, Grigor Obolensky, Christophe Penkerch, Louis Prieur, Collin Roesler, Romain Serra, Julia Uitz, and Xiaogang Xing



Two databases derived from BGC-Argo float measurements for marine biogeochemical and bio-optical applications

Emanuele Organelli^{1,2}, Marie Barbieux¹, Hervé Claustre¹, Catherine Schmechtig³, Antoine Poteau¹, Annick Bricaud¹, Emmanuel Boss⁴, Nathan Briggs¹, Giorgio Dall’Olmo^{2,5}, Fabrizio D’Ortenzio¹, Edouard Leymarie¹, Antoine Mangin⁶, Grigor Obolensky⁷, Christophe Penkerch¹, Louis Prieur¹, Collin Roesler⁸, Romain Serra⁶, Julia Uitz¹, and Xiaogang Xing⁹

¹Sorbonne Universités, UPMC Univ Paris 06, CNRS, UMR 7093, Laboratoire d’Océanographie de Villefranche (LOV), 181 Chemin du Lazaret, 06230 Villefranche-sur-mer, France

²Plymouth Marine Laboratory, PL1 3DH Plymouth, UK

³Sorbonne Universités, UPMC Université Paris 06, CNRS, UMS 3455, OSU Ecce-Terra, Paris, France

⁴School of Marine Sciences, University of Maine, Orono, Maine, USA

⁵National Centre for Earth Observation, Plymouth Marine Laboratory, PL1 3DH Plymouth, UK

⁶ACRI-ST, 260 route du Pin Montard, 06904 Sophia-Antipolis, France

⁷ERIC Euro-Argo, 29280 Plouzané, France

⁸Department of Earth and Oceanographic Science, Bowdoin College, Brunswick, Maine, USA

⁹State Key Laboratory of Satellite Ocean Environment Dynamics, Second Institute of Oceanography, State Oceanic Administration, Hangzhou, 310012, China

Correspondence to: Emanuele Organelli (emo@pml.ac.uk)

Received: 18 June 2017 – Discussion started: 13 July 2017

Revised: 5 October 2017 – Accepted: 10 October 2017 – Published: 22 November 2017

Abstract. Since 2012, an array of 105 Biogeochemical-Argo (BGC-Argo) floats has been deployed across the world’s oceans to assist in filling observational gaps that are required for characterizing open-ocean environments. Profiles of biogeochemical (chlorophyll and dissolved organic matter) and optical (single-wavelength particulate optical backscattering, downward irradiance at three wavelengths, and photosynthetically available radiation) variables are collected in the upper 1000 m every 1 to 10 days. The database of 9837 vertical profiles collected up to January 2016 is presented and its spatial and temporal coverage is discussed. Each variable is quality controlled with specifically developed procedures and its time series is quality-assessed to identify issues related to biofouling and/or instrument drift. A second database of 5748 profile-derived products within the first optical depth (i.e., the layer of interest for satellite remote sensing) is also presented and its spatiotemporal distribution discussed. This database, devoted to field and remote ocean color applications, includes diffuse attenuation coefficients for downward irradiance at three narrow wavebands and one broad waveband (photosynthetically available radiation), calibrated chlorophyll and fluorescent dissolved organic matter concentrations, and single-wavelength particulate optical backscattering. To demonstrate the applicability of these databases, data within the first optical depth are compared with previously established bio-optical models and used to validate remotely derived bio-optical products. The quality-controlled databases are publicly available from the SEANO (SEA scieNtific Open data Edition) publisher at <https://doi.org/10.17882/49388> and <https://doi.org/10.17882/47142> for vertical profiles and products within the first optical depth, respectively.

1 Introduction

In the early 2000s, the international oceanographic community raised concerns about the large uncertainties still limiting the estimation of key biogeochemical processes in the ocean that contribute to controlling the Earth's climate (e.g., primary production and carbon export). The spatial and temporal under-sampling of most of the world's oceans was considered the main cause of this limitation (Munk, 2000; Hall et al., 2010). The same community thus proposed the implementation of autonomous platforms, such as the Biogeochemical-Argo profiling floats (hereafter BGC-Argo floats), as one solution to fill this observational gap (Johnson et al., 2009; Claustre et al., 2010a). Unlike sampling from vessels, BGC-Argo floats operate with high temporal and spatial coverage, including remote areas and periods when ship-based sampling is difficult. BGC-Argo can therefore help the scientific community to accumulate observations on biogeochemical properties from the surface to the interior of the ocean in a new and systematic way (Claustre et al., 2010a; Biogeochemical-Argo Planning Group, 2016; Johnson and Claustre, 2016). This, together with several other recent efforts to compile global biologically or biogeochemically relevant datasets (Peloquin et al., 2013; Sauzède et al., 2015; Bakker et al., 2016; Mouw et al., 2016; Valente et al., 2016), may provide new insights on marine ecological and biogeochemical processes and help better understand if oceans and their properties have changed and/or are changing over the decades (Organelli et al., 2017).

In 2012, an array of BGC-Argo floats started to be deployed in several oceanic areas encompassing a wide range of biogeochemical and trophic conditions, from subpolar to tropical and from eutrophic systems to oligotrophic mid-ocean gyres (Organelli et al., 2016a, 2017). This array of floats was devoted to the acquisition of profiles of key biogeochemical quantities via their optical properties (i.e., chlorophyll *a* and colored dissolved organic matter, CDOM) and of hydrological variables (i.e., temperature and salinity). In addition, the array provided measurements of the underwater light field (i.e., irradiance) and of the inherent optical properties (i.e., particulate optical beam attenuation and backscattering coefficients) of the oceans. All these measurements, and derived quantities, are useful for both biogeochemical and bio-optical studies, to address the variability in biological processes (e.g., phytoplankton phenology and primary production; Lacour et al., 2015) and linkages with physical drivers (Boss et al., 2008; Boss and Behrenfeld, 2010; Lacour et al., 2017; Mignot et al., 2017; Stanev et al., 2017), to estimate particulate organic carbon concentrations and export (e.g., Bishop et al., 2002; Dall'Olmo and Mork, 2014; Poteau et al., 2017), and to support satellite missions through validation of bio-optical products retrieved from ocean color remote sensing (e.g., chlorophyll concentration; Claustre et al., 2010b; IOCCG, 2011, 2015; Gerbi et al., 2016; Haëntjens et al., 2017) or by identification

of those regions with bio-optical behaviors departing from mean-statistical trends (i.e., bio-optical anomalies; Organelli et al., 2017).

The study reported here presents a quality-controlled database of biogeochemical and bio-optical vertical profiles acquired by more than 100 BGC-Argo floats equipped with a homogeneous and interoperable instrument configuration. The “Biogeochemical and Optical Argo Database – profiles” (BOPAD-prof; Barbieux et al., 2017a) includes 0–1000 m measurements of calibrated fluorometric chlorophyll *a* (Chl, mg m^{-3}) and fluorescent dissolved organic matter (FDOM, ppb of quinine sulfate) concentrations, the particulate optical backscattering coefficient at 700 nm ($b_{\text{bp}}(700)$, m^{-1}), downward irradiance $E_{\text{d}}(\lambda)$ at three wavelengths (380, 412, and 490 nm, $\mu\text{W cm}^{-2} \text{nm}^{-1}$), and the spectrally integrated photosynthetically available radiation (PAR, $\mu\text{mol quanta m}^{-2} \text{s}^{-1}$). Temperature (T , °C) and salinity (S , PSU) provide the hydrographic context for the optical observations. The geographic and temporal distribution of each parameter is described and discussed. A second database is specifically devoted to field and remote ocean color applications (Organelli et al., 2016b). It is focused on observations and derived products within the first optical depth Z_{pd} (also known as the penetration depth, i.e., the layer of interest for satellite remote sensing; Gordon and McCluney, 1975; units of m) and includes the “Biogeochemical and Optical Argo Database – surface” (BOPAD-surf) Chl, FDOM, and $b_{\text{bp}}(700)$ quantities derived from the quality-controlled vertical profiles in addition to the diffuse attenuation coefficients for downward irradiance ($K_{\text{d}}(\lambda)$, m^{-1}) and PAR ($K_{\text{d}}(\text{PAR})$, m^{-1}). Data presented in BOPAD-surf are compared with existing bio-optical models and used in conjunction with products derived from satellite platforms in order to show applicability for validating ocean color bio-optical products. Finally, sources of uncertainties are presented, and errors discussed, for variables in BOPAD-prof and profile-derived products within BOPAD-surf.

2 Material and methods

2.1 Biogeochemical-Argo floats: instruments, sampling strategy, and data

The PROVOR CTS4 profiling float used in this study is one of the latest models of autonomous platforms developed by NKE Marine Electronics Inc. (France). Designed in the context of the Remotely-Sensed Biogeochemical Cycles in the Ocean (remOcean) and Novel Argo Ocean Observing System (NAOS) projects, this profiling float has also been adopted by several international collaborators and research programs. A full technical description of the platform and instrument arrangements can be found in Leymarie et al. (2013) and Organelli et al. (2016a).

All PROVOR CTS4 profiling floats were programmed to acquire 0–1000 m vertical profiles every 1 to 10 days while

operating (every 4 ± 2 days on average; see Appendix A), depending on the mission and scientific objectives. Upward profiles commenced from the 1000 m parking depth in time for surfacing at local noon. Data acquisition was nominally at 0.20 m resolution between surface and 10 m, 1 m resolution between 10 and 250 m, and generally 10 m resolution between 250 and 1000 m (except on some occasions when it was 1 m).

An array of 105 BGC-Argo floats acquired more than 10 000 vertical profiles of bio-optical and biogeochemical variables over a broad range of oceanic environments and trophic conditions between October 2012 and January 2016. A WET Labs ECO (Environmental Characterization Optics) sensor installed on each BGC-Argo float provided 0–1000 m vertical profiles of chlorophyll (fluorometer with excitation and emission of 470 and 695 nm) and dissolved organic matter (fluorometer with excitation and emission of 370 and 460 nm) fluorescence and of the volume scattering coefficient ($\beta(\theta, \lambda)$) measured at an angle of 124° and a wavelength λ of 700 nm (Sullivan et al., 2013; Schmechtig et al., 2016). The multispectral ocean color radiometer OCR-504 (Satlantic Inc.) provided vertical profiles of PAR and downward irradiance $E_d(\lambda)$ at three wavelengths (380, 412, and 490 nm) in the upper 250 m. Electronic counts of each measured variable were converted into geophysical quantities using the calibration factors and standard practices provided by the manufacturers (Satlantic, 2013; WET Labs, 2016). According to the standard procedures for Argo data management (Wong et al., 2015), each profile was quality-controlled by applying methods specifically developed for each parameter (see Sect. 2.2). Because sensor performance might degrade over the float lifetime, each float was evaluated for possible corruption by biofouling or instrument drift (see Sect. 2.3). A total of 9837 BGC-Argo stations, each one corresponding to an upward profile, composed the database BOPAD-prof presented in this study (Fig. 1). To discuss the geographic and temporal representativeness of the database, the 9837 quality-controlled stations were grouped into 25 geographic areas. BGC-Argo float names, number of profiles, lifetime, and additional details are presented in Appendix A.

2.2 Quality control of vertical profiles

Vertical profiles of Chl concentration were quality-controlled following procedures and recommendations in Schmechtig et al. (2014). Profiles were (1) adjusted for nonzero deep values and (2) corrected by removing negative spikes lower than twice the 10th quantiles of the residual signal calculated as the difference between the profile values and a median filter (five-point window). No interpolation of missing data was performed. Positive spikes were retained; (3) measured values outside the specific range reported in the manufacturer's technical specifications were removed (WET Labs, 2016). No interpolation of missing data was performed and (4) profiles were corrected for non-photochemical quench-

ing (NPQ; Kiefer, 1973) by extrapolation of the fluorescence at the bottom of the mixed layer to the surface following Xing et al. (2012) and Schmechtig et al. (2014). Profile-by-profile analysis–visualization, number of invalid points, and related origin are available on <http://seasiderendezvous.eu>. Profiles collected in areas such as the Black Sea and subtropical regions were further corrected for the contribution of fluorescence originating from non-algal matter following procedures described in Xing et al. (2017). The correction was applied when Chl and FDOM concentrations were positively correlated below the depth at which Chl was supposed to be zero (for equations and quantitative metrics see Xing et al., 2017). The magnitude of this correction within the mixed layer varied between 3 and 50 % (for details see Table 2 in Xing et al., 2017, for the same database). Finally, according to the recommendations by Roesler et al. (2017) on the overestimation by standard WET Labs fluorometers, remaining Chl values were divided by a factor of 2 to correct for the global bias in factory calibration.

The FDOM vertical profiles were quality-controlled according to the following procedures: (1) measured values outside the specific range reported in the manufacturer's technical specifications were removed (WET Labs, 2016). No interpolation of missing data was performed; (2) negative and positive spikes outside the 25th and 75th quantiles of the raw profile were removed, and subsequently any measurement with an absolute residual value > 4 calculated as the difference between the profile and a mean filter was removed. Finally, according to the assumption that deep CDOM concentrations are conservative in a given water body (Nelson et al., 2010), and assuming that the BGC-Argo floats included in this database spent their lifetime mainly within the same deep water mass, an offset was applied to each FDOM profile to align the median value between 950 and 1000 m with the first profile and correct for possible sensor drift.

Following procedures described in Schmechtig et al. (2016), vertical profiles of the angular scattering coefficient $\beta(124^\circ, 700)$ were (1) converted into the particulate angular scattering coefficient by removing the contribution of pure seawater, which depends on water temperature and salinity (Zhang et al., 2009); (2) converted to the particulate optical backscattering coefficient at 700 nm ($b_{bp}(700)$) using a χ factor equal to 1.076 (Sullivan et al., 2013); and (3) verified for measured values outside the specific range reported in the manufacturer's technical specifications (WET Labs, 2016). No interpolation of removed data was performed; (4) the profiles were corrected by removing negative spikes lower than twice the 10th quantiles of the residual signal calculated as the difference between the profile and a median filter (Briggs et al., 2011). No interpolation of missing data was performed. Positive spikes were retained.

Vertical profiles of PAR and $E_d(\lambda)$ were quality controlled following the procedures detailed in Organelli et al. (2016a). This protocol accepts measurements acquired both under clear and cloudy sky conditions as good as soon as these re-

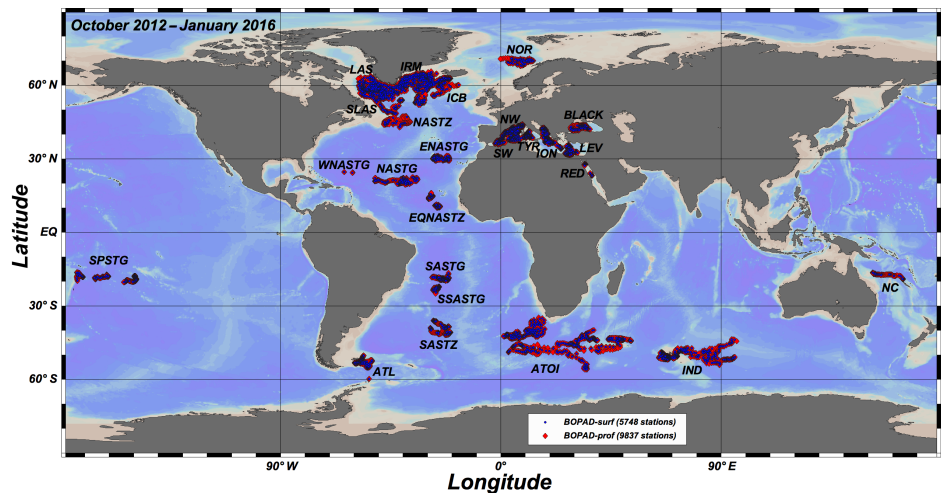


Figure 1. Red diamonds indicate the 9837 stations collected by 105 Biogeochemical-Argo floats in the period of October 2012–January 2016 that compose the database of vertical profiles (BOPAD-prof). Blue dots indicate the 5748 stations used to assemble the database within the first optical depth and devoted to bio-optical applications (BOPAD-surf). Abbreviations for the 25 geographic regions used to group the stations are also displayed (see Appendix A for full description). The map was drawn using the Ocean Data View software (R. Schlitzer, Ocean Data View, <http://odv.awi.de>).

main stable during the cast (Organelli et al., 2016a). A first step of the quality control consisted of identifying and discarding each profile acquired under very unstable sky and sea conditions (see quantitative metrics in Organelli et al., 2016a). The remaining profiles were quality controlled to identify and remove (1) nonzero dark measurements at depth, (2) sporadic atmospheric clouds, and (3) wave focusing (Zaneveld et al., 2001) in the upper part of the profile. Because $E_d(\lambda)$ and PAR measurements are collected up to a few centimeters from the sea surface, quality-controlled vertical profiles were completed by values just below it ($E_d(0^-)$). The $E_d(0^-)$ values were calculated by extrapolation within the first optical depth (Z_{pd}) using a second-degree polynomial fit (Organelli et al., 2016a), with Z_{pd} calculated as $Z_{eu}/4.6$ (Morel, 1988). The euphotic depth, Z_{eu} , is the depth at which PAR is reduced to 1 % of its value just below the surface and was calculated from measured PAR profiles. To achieve $E_d(0^-)$ calculations, initial values of Z_{eu} and Z_{pd} were first estimated from the shallowest PAR measurement and subsequently from that corresponding to 0^- . For radiometric data prior to the application of the above-mentioned quality-control procedures, the reader is referred to the archive at <https://doi.org/10.17882/42182> (Argo, 2000).

2.3 Testing for biofouling and instrument drift

A set of four tests was specifically developed to identify potential biofouling and instrument drift. To achieve a reliable evaluation for each of the 105 BGC-Argo floats, each variable was examined both individually and in conjunction with the others, which is greatly aided by redundancy among derived quantities. A combination of raw profiles and quality-

controlled products was needed for the analysis. Ancillary data such as measurements acquired in drift mode at 1000 m (i.e., between two following ascent profiles) were also included in the analysis and they can be publicly accessed at <http://www.oao.obs-vlfr.fr/maps/en/>. Test 1 was conducted on raw time series of salinity, Chl, FDOM, $b_{bp}(700)$, and $E_d(\lambda)$, i.e., before the application of the quality-control procedures described in Sect. 2.2. Test 1 aimed to identify sharp gradients in measured variables over the entire profile (i.e., sudden decrease or increase of Chl and FDOM concentrations or increase in $b_{bp}(700)$ values) not attributable to any biological or hydrological cause (e.g., particle aggregates or nepheloid layer of particles). Tests 2 and 3 were conducted on raw measurements collected by each profiler when in drift mode. Test 2 analyzed time series of the sensors' dark measurements for Chl and $E_d(\lambda)$ at the 1000 m parking depth. Test 3 consisted of the analysis of the relationship between raw FDOM and salinity at the 1000 m parking depth over time. Assuming that deep CDOM concentrations are conservative in the same water body (Nelson et al., 2010), variations in deep FDOM values for a given salinity are likely due to changes in sensor performances (Fig. 2). Test 4 was based on the comparison between irradiance values just above the sea surface ($E_d(0^+)$) and those modeled by Gregg and Carder (1990) for clear cloudless sky, as described by Organelli et al. (2016a). The performance of this test, which assesses the accuracy of measured irradiance values, strongly depends on the value extrapolated to the sea surface (i.e., $E_d(0^-)$). $E_d(0^+)$ values at 380, 412, and 490 nm were obtained by dividing $E_d(0^-)$ derived from quality-controlled profiles as described in Sect. 2.2 by the transmission across the sea–air interface factor (Austin, 1974). When the results

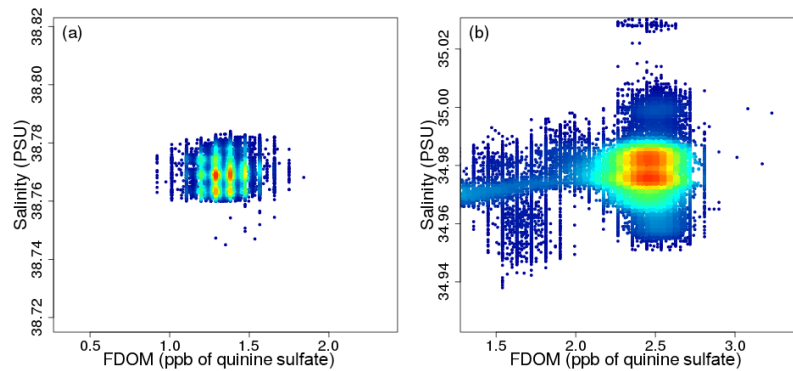


Figure 2. Salinity (PSU) vs. FDOM (ppb of quinine sulfate) data collected during drift at the 1000 m parking depth for two Biogeochemical-Argo floats: **(a)** float WMO 6901768 (eastern Mediterranean Sea) showing no FDOM changes for a similar salinity (7 months of sampling) and **(b)** float WMO 6901474 (North Atlantic subtropical gyre) showing a decrease in FDOM for a similar salinity (more than 24 months of sampling). In plot **(b)**, FDOM values around 2.5 ppb of quinine sulfate represent measurements collected during the first 2 years of the float lifetime and which have not been discarded. Colors indicate density of measurements for a given salinity vs. the FDOM value (red > blue).

of the tests above indicated possible measurement issues (i.e., 1710 profiles spanned across 70 floats), each preprocessing variable time series was interrupted and only previously collected profiles were retained (i.e., 9837 stations in BOPAD-prof).

2.4 Bio-optical products within the first optical depth

BOPAD-surf was compiled using 5748 stations with quality-controlled Z_{eu} and Z_{pd} values (Fig. 1). The procedure of Organelli et al. (2016a) reduced the number of PAR profiles that can be exploited for deriving optical quantities within the first optical depth (see Sect. 2.2 for computation) by about 40 % (e.g., because of atmospheric clouds) with respect to BOPAD-prof. To compute vertical diffuse attenuation coefficients for downward irradiance ($K_d(\lambda)$) and PAR ($K_d(\text{PAR})$) within Z_{pd} , each radiometric profile was binned in 1 m intervals. $K_d(\lambda)$ and $K_d(\text{PAR})$ values were then derived from a linear fit, after removal of outliers, between the natural logarithm of the radiometric quantity and depth (in units of pressure) following Mueller et al. (2003). $K_d(\lambda)$ and $K_d(\text{PAR})$ values obtained from linear fits based on less than three points or with a determination coefficient (r^2) lower than 0.90 were discarded (Organelli et al., 2017). Values of Chl, FDOM, and $b_{bp}(700)$ were also derived, within the first optical depth, from quality-controlled vertical profiles. Before computation, FDOM quality-controlled profiles were smoothed by applying first a median filter (five-point window) and then an average filter (seven-point window). A median filter (five-point window) was applied to quality-controlled $b_{bp}(700)$ profiles to identify and subsequently remove positive spikes. Finally, Chl, FDOM, and $b_{bp}(700)$ profiles were binned in 1 m intervals, and the average within Z_{pd} was computed.

2.5 Comparison with satellite data

To demonstrate the applicability of these BGC-Argo databases, satellite-derived diffuse attenuation coefficients of downward irradiance at 490 nm ($K_d(490)_{\text{sat}}$) obtained by the GlobColour project (ACRI-ST, 2017) were downloaded from the web portal <http://seasiderendezvous.fr/matchup.php> and compared to the in situ BGC-Argo counterparts. $K_d(490)_{\text{sat}}$ values were obtained, for the period October 2012 to January 2016, from daily Level 3 Chl merged products using the empirical algorithm by Morel et al. (2007a). Chl products were merged using MODIS-Aqua and VIIRS Level 3 products (NASA reprocessing R2014.0); see fully detailed merging procedures in ACRI-ST (2017). As statistics of the match-up analysis, the RMSE (m^{-1}) and the median percentage difference (MPD) were calculated according to Organelli et al. (2016c).

3 Quality-controlled vertical profiles

In this section, specific examples of quality control are presented for each examined variable to provide context for the database. In the case of Chl profiles, three examples extracted from floats operating in different trophic and optical environments are presented (North Atlantic subpolar gyre, Black Sea, and South Atlantic subtropical gyre; Fig. 3). It is recalled here that all quality-controlled Chl values are divided by 2 as recommended by Roesler et al. (2017). The raw North Atlantic profile (Fig. 3a) exhibits strong non-photochemical quenching at the surface and positive spikes at depth. After the quality control, NPQ is corrected and the positive spikes that are likely related to biological information are retained (Fig. 3a). The Black Sea vertical chlorophyll profile (Fig. 3b) is mainly characterized by a monotonic Chl increase to depth, where the concentration is expected to be null. As Proctor and Roesler (2010) and Xing et al. (2017) stated, the

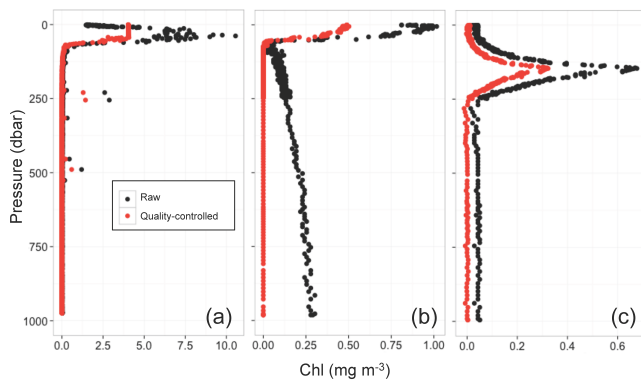


Figure 3. Raw and quality-controlled vertical profiles of chlorophyll *a* concentration (Chl) for the following areas: **(a)** the North Atlantic subpolar gyre (float WMO 6901516), **(b)** the Black Sea (float WMO 7900591), and **(c)** the South Atlantic subtropical gyre (float WMO 6901439).

observed Chl increase at depth is due to very high CDOM (which is a consequence of the anoxic conditions prevailing at depth in the Black Sea) and non-algal matter concentrations that can affect the chlorophyll fluorescence signal. After correcting the profile according to Xing et al. (2017), Chl concentrations below 100 m are zero. The profile from the South Atlantic subtropical gyre mostly exhibits a nonzero dark offset, which is removed in quality control (Fig. 3c).

Raw FDOM vertical profiles are generally noisy and spiky, especially in the upper water column (Fig. 4). After quality control, large spikes are identified and removed, and the profile is aligned to match the 950–1000 m median value of the first profile acquired by the float (Fig. 4). Depending on the application, further processing of FDOM profiles such as smoothing and filtering is recommended before use (see, for example, Sect. 2.4).

In the case of $b_{bp}(700)$ vertical profiles, the examples in Fig. 5 represent quality-controlled profiles with and without positive spikes (see Sect. 2.4). Although positive spikes likely indicate the occurrence of large aggregates and are essential to monitoring carbon fluxes towards the deep ocean (Briggs et al., 2011), they can introduce some noise when export of particulate organic carbon due to small particles (Dall’Olmo and Mork, 2014), the physiological status of the algal community (Barbieux et al., 2017b), or the bio-optical behavior of world’s oceans (Organelli et al., 2017) is analyzed. Both versions of $b_{bp}(700)$ profiles are archived in BOPAD-prof.

All the quality-controlled profiles of $E_d(\lambda)$ and PAR included in the database presented correspond to Type 1 (i.e., best quality) in Organelli et al. (2016a). The examples in Fig. 6 represent $E_d(412)$ profiles collected in eastern Mediterranean Sea waters under different sky conditions. The profile in Fig. 6a is acquired under nearly clear sky conditions. In this case, the quality-control procedure only

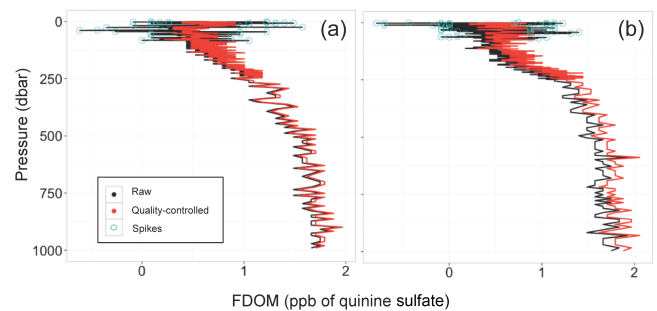


Figure 4. **(a, b)** Raw and quality-controlled vertical profiles of fluorescent dissolved organic matter (FDOM, ppb of quinine sulfate) collected by the profiling float WMO 6901440 in the South Atlantic subtropical gyre. Open cyan circles indicate positive spikes for the raw profile. Both profiles were acquired within 1 week from the deployment.

identifies and removes dark values at depth (not shown) and those corresponding to wave focusing (Zaneveld et al., 2001) at the surface. The profile in Fig. 6b is instead characterized by nonzero dark values in deep waters (not shown) and sporadic atmospheric clouds, with the major cloud perturbing data acquisition for at least 2 min. The ensemble of tests of the applied quality-control procedure (Organelli et al., 2016a) detects the various perturbations (Fig. 6b). Additional examples showing performances of applied procedure for $E_d(380)$, $E_d(412)$, $E_d(490)$, and PAR can be found in Organelli et al. (2016a).

4 BOPAD-prof: spatiotemporal distribution of the biogeochemical and optical Argo database of vertical profiles

Deployment of BGC-Argo floats has been mainly focused, within limitations of project-driven resources, on some of the important carbon-export regions of the Atlantic Ocean (Alkire et al., 2012), on areas with dynamic trophic regimes (e.g., Mediterranean Sea; D’Ortenzio and Ribera d’Alcalà, 2009), and on oligotrophic mid-ocean gyres, in all cases in regions with depths greater than 1000 m (except on a very few occasions). As a result, the 9837 BGC-Argo stations of vertical profiles within BOPAD-prof cover a wide range of trophic conditions and represent the first step to set up a publicly available and interoperable database for biogeochemical and bio-optical studies. Hereafter, we present the spatial and temporal coverage of quality-controlled vertical profiles for each biogeochemical and bio-optical variable between the world’s hemispheres and among regions. The spatiotemporal distribution of temperature profiles, which are representative of the entire raw database, is also shown.

The latitudinal and monthly distributions of the quality-controlled profiles show similar patterns among the eight variables (Fig. 7), which indicates that the quality-control

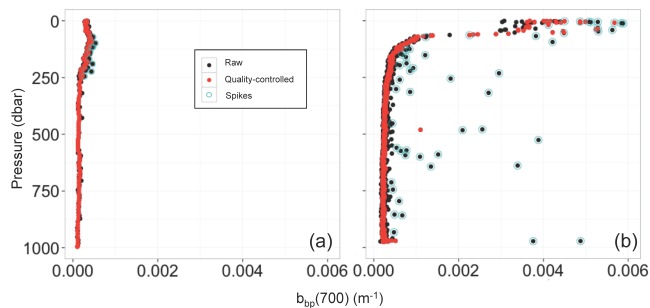


Figure 5. (a, b) Raw (i.e., before positive spike removal) and quality-controlled (i.e., after application of a median filter) vertical profiles of particulate optical backscattering at 700 nm ($b_{bp}(700)$) collected in the South Atlantic subtropical (float WMO 6901439) and North Atlantic subpolar (float WMO 6901516) gyres, respectively. Open cyan circles indicate positive spikes (Briggs et al., 2011).

procedures do not bias the sampling spatially or temporally. However, the total number of profiles for a given latitude and month of the year is different among variables. It is generally the highest for Chl (Fig. 7c, d) and $b_{bp}(700)$ (Fig. 7g, h). Because of the strict quality control by Organelli et al. (2016a) that removes radiometric profiles acquired under very unstable meteorological conditions, the total number of $E_d(\lambda)$ and PAR profiles is generally the lowest (Fig. 7i–p).

In the Northern Hemisphere, the database covers a broader latitudinal range than in the Southern Hemisphere. Data range from the Equator to the Arctic Ocean, and late spring to midsummer are the most represented periods. The number of profiles is substantially lower between January and April. This occurs especially for radiometric quantities (Fig. 7) as a consequence of the decreasing stability of the water column associated with deteriorated sky and sea conditions (D’Ortenzio et al., 2005; Lacour et al., 2015). This high contribution of the Northern Hemisphere to the database is due to the first projects piloting the deployment of BGC-Argo floats that were mainly focused on the North Atlantic subpolar gyre (i.e., 48–65° N; remOcean project) and the Mediterranean Sea (i.e., 31–44° N; NAOS project). Latitudes higher than 67° N are included thanks to a 3-year operating float collecting all variables except FDOM (Fig. 7e). Latitudes between 0 and 30° N (i.e., subtropical gyres and surrounding zones) are also represented owing to measurements acquired by 10 BGC-Argo floats (Fig. 7). Note, however, that the number of FDOM profiles at these latitudes is lower than for the other variables as a consequence of sensor failure on some floats and absence in those floats deployed in the framework of the UK Bio-Argo and E-AIMS projects (in which the FDOM sensor was replaced by a sensor measuring particulate backscattering coefficient at 532 nm, $b_{bp}(532)$). The Northern Hemisphere is also represented by data collected in two marginal seas (Fig. 1): the Black and Red seas. Similar to subtropical gyres and surrounding areas, the number of

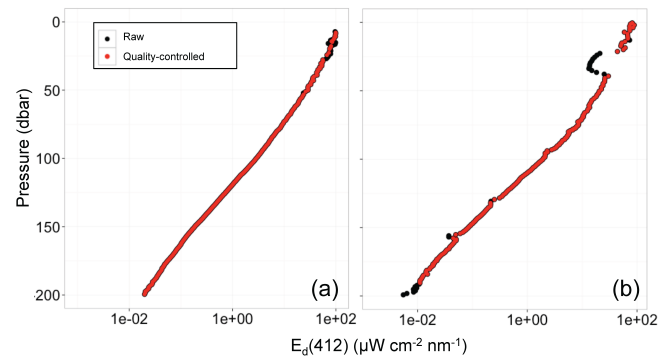


Figure 6. Raw and quality-controlled vertical profiles of downward irradiance at 412 nm ($E_d(412)$) collected by the same profiling float (WMO 6901528) in the eastern Mediterranean Sea under (a) nearly clear and (b) cloudy skies.

FDOM profiles in the Black Sea is lower than for other variables because half of the floats deployed in this area measured $b_{bp}(532)$ instead of FDOM (see Sect. 7 for $b_{bp}(532)$ data availability).

The Southern Hemisphere is primarily represented by data collected at latitudes between 38 and 56° S (Fig. 7) in the Atlantic and Indian sectors of the Southern Ocean (Fig. 1). In contrast to the Northern Hemisphere, no floats have been deployed or reached latitudes higher than 60° S (Fig. 7). Measurements of each variable are also acquired by seven floats in southern subtropical gyres (around 16–25° S) both in the Atlantic and Pacific oceans and by two floats in the region close to New Caledonia in the South Pacific (Fig. 1). The temporal coverage of data collected in the Southern Hemisphere remains uniform from January to September for each variable, but then increases from October to December (Fig. 7). This reflects a switch to adaptive sampling to better resolve the phytoplankton bloom. Similar to the Northern Hemisphere, the number of radiometric profiles tends, however, to slightly decrease during the autumn and the austral summer (from June to August) as a consequence of the worsening meteorological conditions and deepening mixed layer depths (Dong et al., 2008).

The 25 selected regions (grouped into nine major areas) contribute, in terms of number of profiles, in different proportions to the database (Fig. 8). This is a consequence of the different number of floats deployed in each area together with a modulated profiling frequency (from 1 to every 10 days). The North Atlantic Ocean dominates BOPAD-prof, as a consequence of the intensive sampling characterizing the subpolar gyre area in multiple programs. Vertical profiles acquired in the Southern Ocean and the western Mediterranean Sea each represent on average 18 % of the database. The eastern Mediterranean Sea is about 14 %, while the South Atlantic subtropical gyre and surrounding areas contribute 6.3 % on average. The South Pacific Ocean represents only 3 to 5 % of the vertical profiles within BOPAD-prof, while polar and

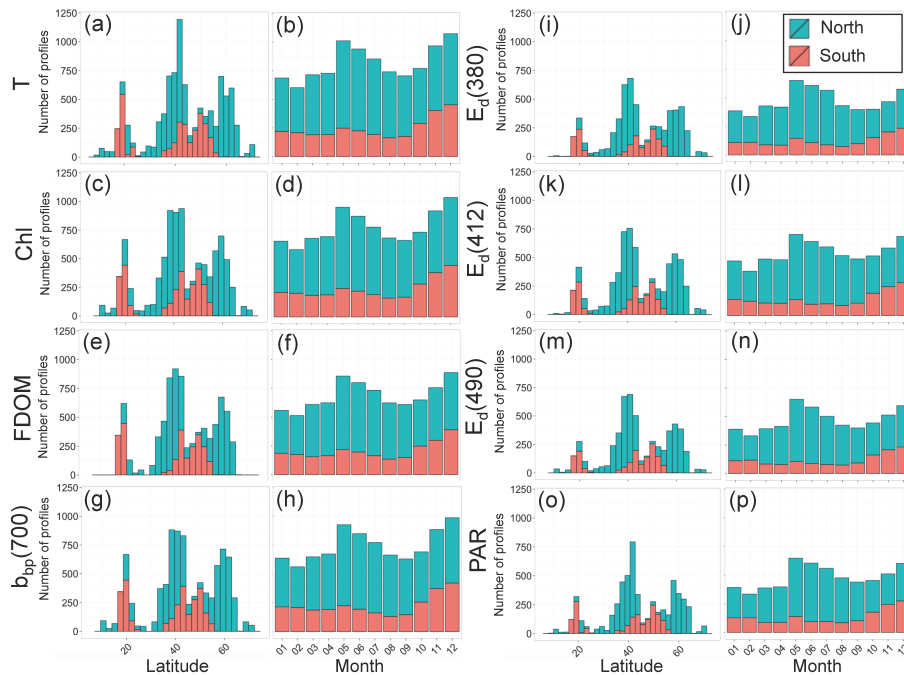


Figure 7. Latitudinal and monthly distributions of the 9837 vertical profiles, presented as stacked histograms, for (a–b) temperature (T), (c–d) chlorophyll a concentration (Chl), (e–f) fluorescent dissolved organic matter (FDOM), (g–h) particulate optical backscattering coefficient at 700 nm ($b_{bp}(700)$), (i–j) downward irradiance at 380 nm ($E_d(380)$), (k–l) downward irradiance at 412 nm ($E_d(412)$), (m–n) downward irradiance at 490 nm ($E_d(490)$), and (o–p) photosynthetically available radiation (PAR). Vertical profile distributions are displayed for both Northern and Southern hemispheres.

marginal seas individually represent a proportion $< 3\%$ of each collected variable. Large areas such as the North Pacific and Indian oceans equal 0 % as no deployments occurred in those regions.

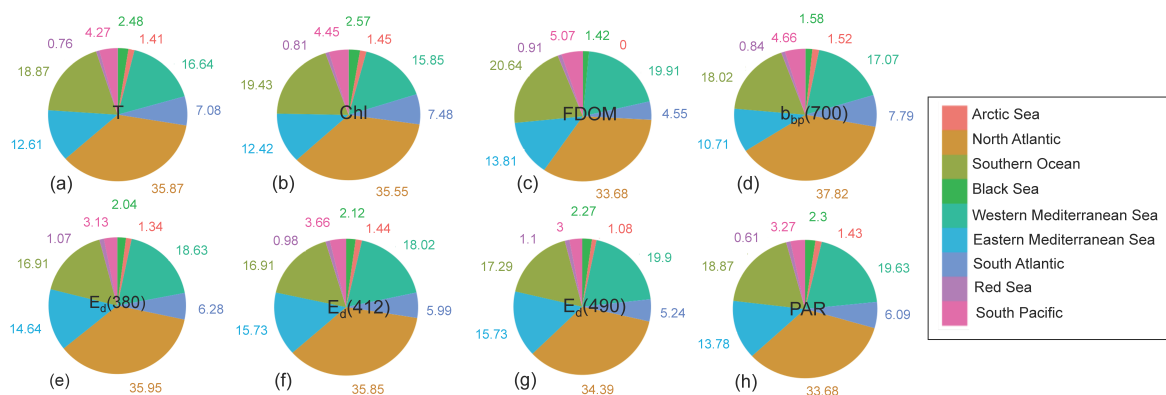
5 BOPAD-surf: properties of the bio-optical database within the first optical depth and joint use with remote sensing of ocean color

Because of the unique in situ spatial and temporal coverage, the international community of optical oceanographers (Claustre et al., 2010b; IOCCG, 2011, 2015; Biogeochemical-Argo Planning Group, 2016) has recently recognized measurements collected by BGC-Argo floats as a fruitful resource of data for bio-optical applications, such as the identification of regions with optical properties departing from mean statistical relationships (Organelli et al., 2017) as well as the validation of ocean color reflectances (Gerbi et al., 2016) and bio-optical products (IOCCG, 2015; Haëntjens et al., 2017). In this context, BOPAD-surf has been compiled with 5748 stations of biogeochemical (i.e., Chl and FDOM) and bio-optical (i.e., $K_d(\lambda)$, $K_d(\text{PAR})$, and $b_{bp}(700)$) variables within the first optical depth (i.e., the layer of interest for ocean color) as derived from previously quality-controlled vertical profiles. The characteristics of this database are described hereafter.

All the 5748 BGC-Argo stations correspond to quality-controlled measurements of euphotic and first optical depths and represent about 60 % of the database of quality-controlled vertical profiles. Ranges and averages (and associated standard deviations) of Z_{eu} and Z_{pd} and of the other variables are reported in Table 1. In agreement with previous observations (Morel and Maritorena, 2001; Lee et al., 2007; Morel et al., 2007a, b; Soppa et al., 2013; Organelli et al., 2014), values of Z_{eu} and Z_{pd} vary mostly in the ranges of 10.5–180.2 and 2.3–39.2 m, respectively, with the deepest values characterizing the Atlantic and South Pacific ocean gyres (Fig. 9a, b). The shallowest Z_{eu} and Z_{pd} layers are instead characteristic of the North Atlantic subpolar gyre in spring, the western Mediterranean Sea, and the Black Sea (Fig. 9a, b). The observed ranges of Chl, FDOM, $b_{bp}(700)$, $K_d(\lambda)$, and $K_d(\text{PAR})$ values derived from BGC-Argo measurements (Table 1) are also in good agreement with previous observations (Morel and Maritorena, 2001; Morel et al., 2007a, b; Cetinić et al., 2012; Dall’Olmo et al., 2012; Pelouquin et al., 2013; Sauzède et al., 2015; Valente et al., 2016). As examples of their spatial distribution across the explored regions, $K_d(412)$ and $K_d(\text{PAR})$ are shown in Fig. 9c and d, respectively. The reader is referred to the work by Organelli et al. (2017) for regional variability in $K_d(380)$ and $K_d(490)$ coefficients.

Table 1. Number of profiles and minimum, maximum, and average (\pm standard deviation) values for each variable included in the Biogeochemical-Argo database within the first optical depth (BOPAD-surf).

Parameter	<i>N</i>	Minimum	Maximum	Average \pm standard deviation
Z_{eu} (m)	5748	10.5	203.8	74 ± 32
Z_{pd} (m)	5748	2.3	44.3	16 ± 7
Chl (mg m^{-3})	4858	0.014	12.15	0.71 ± 1.21
FDOM (ppb of quinine sulfate)	4787	0.028	4.80	1.32 ± 0.76
$b_{bp}(700)$ (m^{-1})	5177	0.00009	0.0274	0.0013 ± 0.0012
$K_d(380)$ (m^{-1})	4156	0.015	0.520	0.103 ± 0.065
$K_d(412)$ (m^{-1})	3951	0.010	0.546	0.090 ± 0.059
$K_d(490)$ (m^{-1})	3553	0.017	0.475	0.065 ± 0.046
$K_d(\text{PAR})$ (m^{-1})	5245	0.025	0.464	0.092 ± 0.051

**Figure 8.** Relative contributions (%) of the 9837 vertical profiles among nine regions and subregions sampled by Biogeochemical-Argo floats: (a) temperature (T), (b) chlorophyll a concentration (Chl), (c) fluorescent dissolved organic matter (FDOM), (d) particulate backscattering coefficient at 700 nm ($b_{bp}(700)$), (e) downward irradiance at 380 nm ($E_d(380)$), (f) downward irradiance at 412 nm ($E_d(412)$), (g) downward irradiance at 490 nm ($E_d(490)$), and (h) photosynthetically available radiation (PAR). See Appendix A for basins included within each region and/or subregion.

As a consequence of the variable-specific quality-control procedures, each variable within BOPAD-surf is represented with different proportions in the 25 regions (Table 2). Of the 5748 stations with quality-controlled Z_{eu} , 83–90 % contain Chl, FDOM, and $b_{bp}(700)$ measurements; 62–72 % contain $K_d(\lambda)$ values within Z_{pd} ; and > 90 % contain $K_d(\text{PAR})$. The Labrador Sea region contains the highest fraction of profiles of each variable (13.81–17.08 %), while the Iceland Basin and the Irminger Sea contribute on average 7.6–7.8 % of the profiles in the database (Table 2). In the Mediterranean Sea, the northwestern, southwestern, and Ionian basins each contribute between 5.5 and 9.7 % of the profiles, while the Levantine and Tyrrhenian seas each contribute about 4 % on average (Table 2). In the Southern Hemisphere, the eastern Atlantic and the Indian sectors of the Southern Ocean each contribute about 6–10 % of the entire database, while the relative contribution of the western part of the Atlantic sector is < 4.45 % (Table 2). Subtropical gyres of both hemispheres contribute from 1.47 to 4.43 % according to the variable (Table 2). Marginal seas (i.e., Black and Red seas) and transition

zones among various trophic regimes represent less than 3 % of the whole database within the first optical depth (Table 2). The North Pacific and Indian oceans equal 0 %.

The goal of BOPAD-surf supporting in situ and remote bio-optical applications is demonstrated by two examples of possible use. As a first exercise, previously established bio-optical relationships (Morel et al., 2007a) are evaluated against the BGC-Argo database. It is important to identify the regions with bio-optical behaviors deviating from the average trend because a bio-optical anomaly could likely lead to uncertainties in retrieving bio-optical and biogeochemical quantities from satellite ocean color observations (Organelli et al., 2017). The relationship of $K_d(\text{PAR})$ as a function of $K_d(490)$ for the BGC-Argo database is in good agreement with those by Morel et al. (2007a). Slight deviations appear, however, at the lowest $K_d(\text{PAR})$ and $K_d(490)$ values and mainly correspond to samples collected in the subtropical gyres and eastern Mediterranean Sea (Fig. 10). In a second exercise, $K_d(490)$ values obtained from the merged GlobColour satellite products (ACRI-ST, 2017) are

Table 2. Relative contribution (%) of biogeochemical and bio-optical variables for the 25 geographic regions included in the Biogeochemical-Argo database within the first optical depth (BOPAD-surf).

Region	Basin (abbreviation)	Chl	FDOM	$b_{bp}(700)$	$K_d(380)$	$K_d(412)$	$K_d(490)$	$K_d(PAR)$
Arctic Sea	Norwegian Sea (NOR)	1.54	0.00	1.60	1.52	1.95	1.49	1.58
Black Sea	Black Sea (BLACK)	2.68	0.00	2.07	2.38	2.96	2.73	2.21
Western Mediter-ranean Sea	Northwestern (NW)	8.79	9.71	9.02	7.89	7.87	7.97	8.01
	Southwestern (SW)	7.62	8.13	7.11	7.24	5.59	5.88	6.58
	Tyrrhenian Sea (TYR)	3.83	4.97	4.15	4.55	3.32	2.98	3.85
Eastern Mediter-ranean Sea	Ionian Sea (ION)	7.60	9.34	5.52	9.24	8.00	8.53	8.27
	Levantine Sea (LEV)	2.96	5.39	5.62	4.21	3.32	3.80	4.67
North Atlantic subpolar gyre	Labrador Sea (LAS)	15.62	13.81	15.14	15.18	17.08	17.00	14.41
	Irminger Sea (IRM)	7.64	8.36	7.78	7.87	8.83	7.15	7.42
	Iceland Basin (ICB)	7.00	7.19	7.48	7.56	8.86	8.19	7.15
	South Labrador Sea (SLAS)	0.58	0.00	0.52	0.51	0.71	0.56	0.51
	Transition zone (NASTZ)	0.95	0.96	0.89	0.82	0.81	0.90	0.84
North Atlantic subtropical gyre	Subtropical gyre (NASTG)	2.26	2.32	2.86	2.26	1.97	2.56	2.61
	Eastern subtropical gyre (ENASTG)	1.07	0.00	0.00	1.32	1.01	1.27	1.35
	Western subtropical gyre (WNASTG)	0.08	0.00	0.10	0.05	0.00	0.03	0.08
	Transition zone (EQ-NASTZ)	1.01	0.00	1.00	0.12	0.28	0.45	0.82
Red Sea	Red Sea (RED)	0.93	1.04	1.04	0.99	0.66	0.65	0.78
South Atlantic Ocean	Subtropical gyre (SASTG)	1.63	4.43	4.10	3.73	2.86	3.26	3.74
	South subtropical gyre (SSASTG)	0.33	0.00	0.95	0.77	0.58	0.84	0.90
	Transition zone (SASTZ)	1.81	0.00	1.70	0.99	1.47	1.60	1.51
South Pacific Ocean	Subtropical gyre (SPSTG)	1.56	2.74	2.53	1.56	1.47	1.77	2.21
	New Caledonia (NC)	0.97	1.19	1.12	0.87	0.68	0.90	0.93
Southern Ocean	Atlantic sector (ATL)	3.54	3.91	0.64	4.45	2.91	3.74	3.68
	Atlantic to Indian sector (ATOI)	10.09	10.28	9.54	7.84	10.07	8.13	8.77
	Indian sector (IND)	7.93	6.25	7.51	6.09	6.73	7.60	7.11

compared to $K_d(490)$ coefficients obtained from BGC-Argo floats (Fig. 11). While the two products agree approximately at moderate values ($K_d(490) \sim 0.1 \text{ m}^{-1}$), estimates from BGC-Argo floats are considerably lower on average, especially at high and very low water clarity. This result strongly warrants further investigation. Thanks to the unprecedented spatial and temporal distribution provided by these autonomous platforms, as well as to the understanding of the associated uncertainty, ocean color algorithm and product validation can routinely be performed in several regions so that errors and possible causes of failure (e.g., influence of Raman scattering; Westberry et al., 2013) could be assessed and/or solved and algorithms for improving the quality of retrievals may be refined.

BOPAD-surf does not, however, represent the only effort in compiling an extensive database tailored for in situ and remote bio-optical applications. BOPAD-surf and the compilation published by Valente et al. (2016; hereafter VL2016) may be good partners, and thus be beneficial to the largest community of oceanographers as soon as complementarities and differences are highlighted. Though BOPAD-surf's temporal coverage is shorter than for VL2016, it extends bio-optical measurements through 2013–2015. It includes regions such as the North Atlantic subpolar gyre, the Southern Ocean, and the Red Sea that are not archived in VL2016. Conversely, VL2016 offers data from the North Pacific and Indian oceans where no PROVOR CTS4 profiling floats have been deployed (Fig. 1). BOPAD-surf complements VL2016 by also providing a balanced acquisition of variables during

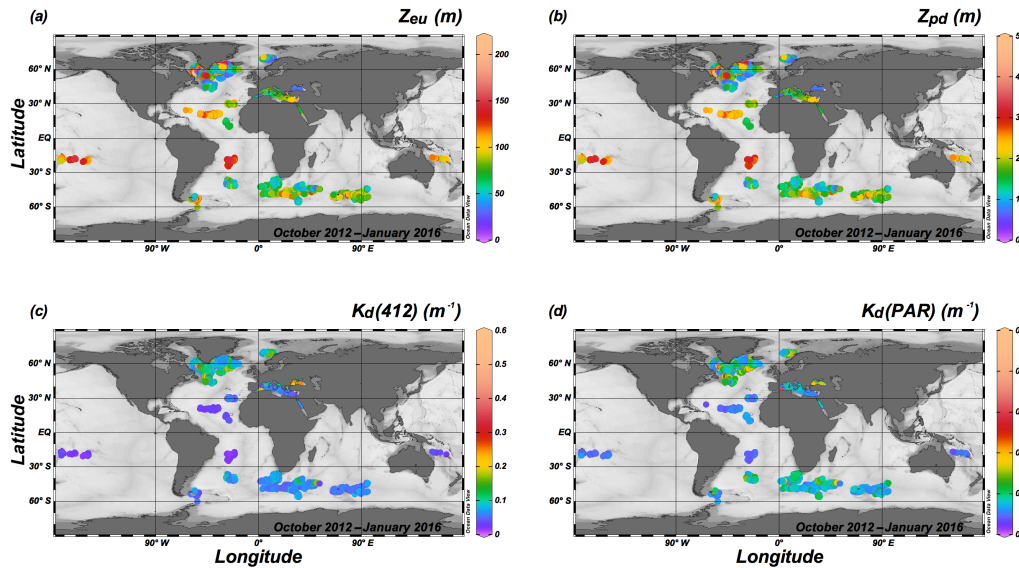


Figure 9. Distribution of (a) euphotic depth (Z_{eu}), (b) first optical depth (Z_{pd}), (c) average value of the diffuse attenuation coefficient for downward irradiance at 412 nm within the first optical depth ($K_d(412)$), and (d) average value of the diffuse attenuation coefficient for the photosynthetically available radiation within the first optical depth ($K_d(PAR)$).

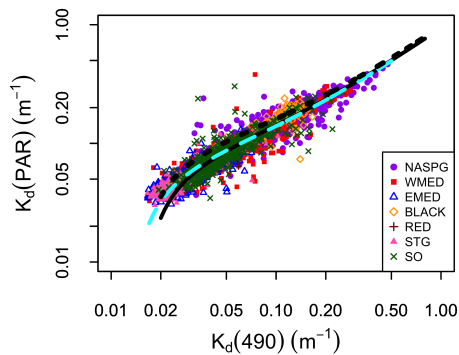


Figure 10. Log-log plot of the diffuse attenuation coefficient for PAR ($K_d(PAR)$) as a function of the diffuse attenuation coefficient for downward irradiance at 490 nm averaged within the first optical depth ($K_d(490)$). The dashed line is the fit to all data and corresponds to $K_d(PAR) = 0.062 (\pm 0.002) + 0.869 (\pm 0.011) K_d(490) - 0.001 (\pm 4 \times 10^{-5}) K_d(490)^{-1}$, with $n = 3402$. Dotted and solid lines represent relationships established by Morel et al. (2007a; Eqs. 9 and 9', respectively) limited to the range of $K_d(490)$ found in that study. Biogeochemical-Argo data are grouped into seven major areas: Norwegian Sea, North Atlantic subpolar gyre and surrounding areas (NASPG); western Mediterranean Sea (WMED); eastern Mediterranean Sea (EMED); Black Sea (BLACK); Red Sea (RED); subtropical gyres and surrounding areas (STG); and Southern Ocean (SO).

wintertime and harsh periods. Considering variables and differences in acquisition and processing, only the diffuse attenuation coefficients for downward irradiance at 412 and 490 nm (i.e., $K_d(412)$ and $K_d(490)$) are directly comparable between the two databases. VL2016 offers a 25-band

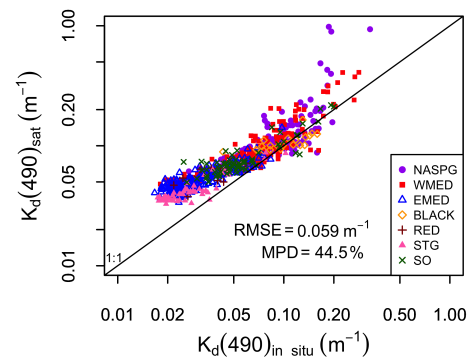


Figure 11. Comparison ($n = 658$) between the diffuse attenuation coefficient for downward irradiance at 490 nm as derived from satellite measurements ($K_d(490)_{sat}$) as a function of $K_d(490)$ derived from Biogeochemical-Argo float measurements within the first optical depth ($K_d(490)_{in situ}$). The solid line represents the 1 : 1 line. Biogeochemical-Argo data are grouped in seven major areas: Norwegian Sea, North Atlantic subpolar gyre and surrounding areas (NASPG); western Mediterranean Sea (WMED); eastern Mediterranean Sea (EMED); Black Sea (BLACK); Red Sea (RED); subtropical gyres and surrounding areas (STG); and Southern Ocean (SO). The RMSE and the median percentage difference (MPD) for all data are shown.

resolution of these coefficients in the visible range, while BOPAD-surf extends such a measurement to a single wavelength in the UV region (i.e., $K_d(380)$) and includes attenuation coefficients for one broad waveband (i.e., $K_d(PAR)$). Similarly, BOPAD-surf provides measurements of the particulate optical backscattering at 700 nm, a band not included in VL2016 (27 bands between 405 and 683 nm). The main

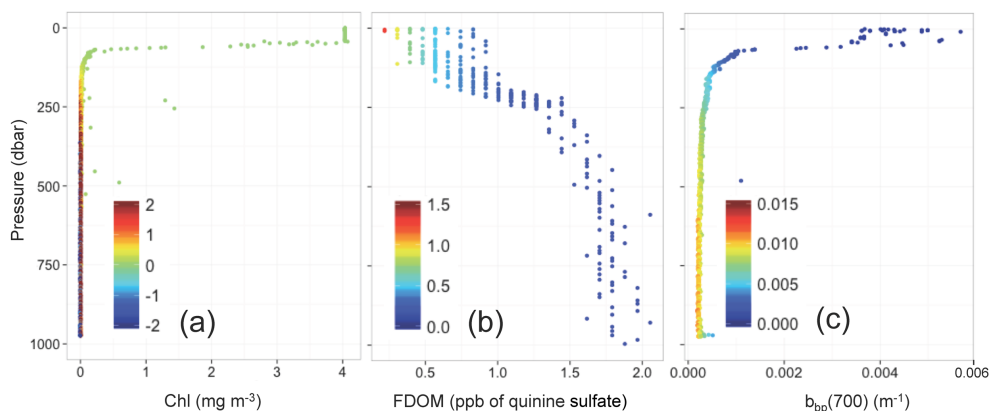


Figure 12. Ratios between sensor sensitivity thresholds and quality-controlled values of (a) chlorophyll *a* concentration (Chl), (b) fluorescent dissolved organic matter (FDOM), and (c) particulate backscattering coefficients at 700 nm ($b_{bp}(700)$). Sensor sensitivity limits are 0.007 mg m^{-3} , $0.28 \text{ ppb of quinine sulfate}$, and $2.2 \times 10^{-6} \text{ m}^{-1}$ for Chl, FDOM, and $b_{bp}(700)$, respectively. Measurements used as examples correspond to quality-controlled profiles shown in Figs. 3a, 4b, and 5b.

differences between the two databases appear for the variables relating to Chl and colored dissolved or detrital material. Because of calibration challenges for deriving accurate Chl concentrations from *in vivo* fluorescence measurements (see Sect. 6), VL2016 is only compiled with Chl concentrations obtained from high-performance liquid chromatography (HPLC) and/or spectrophotometric or fluorometric measurements on algal pigment extracts. FDOM is a different parameter from $a_{dg}(\lambda)$ in Valente et al. (2016). While $a_{dg}(\lambda)$ relies on the light absorption properties of the whole pool of colored dissolved and/or particulate organic material, FDOM only measures the fluorescence emitted by a fraction of this matter. Depending on the excitation and emission wavelengths of the sensor, FDOM can be a proxy of concentrations of freshly produced material or more aged humic substances (Nelson and Gauglitz, 2016). However, in some regions, FDOM can be significantly correlated to $a_{dg}(\lambda)$ and thus be retrievable from ocean color remote sensing (e.g., Matsuoka et al., 2017). FDOM data included in BOPAD-surf also represent a useful resource to improve the understanding of the optical behavior of the oceans (Organelli et al., 2017). Finally, no measurements of remote sensing reflectance are archived within BOPAD-surf, but successors of the PROVOR CTS4 profiling floats used in BOPAD-surf are planned to be deployed in order to collect multispectral downward irradiance and upwelling radiance measurements.

6 Data uncertainty

Through this section, characterization of the uncertainty associated with each quality-controlled variable within BOPAD-prof, and for derived products contained in BOPAD-surf, is provided. No error propagation and budgets are presented here.

When using fluorescence measurements as a proxy of Chl concentration, the uncertainty may propagate from conversion of electronic counts in geophysical quantities, through the application of quality-control procedures for the influence of the NPQ and/or other environmental variables (e.g., non-algal matter), to calibration corrections. The sensor sensitivity of 0.007 mg m^{-3} (i.e., one digital count) is critical at the surface of most oligotrophic environments or for deep low Chl values, where it may be twice as high as the signal (Fig. 12a). Correction for the NPQ may also introduce uncertainties depending on the procedure and assumptions on which the method relies. However, a comparison between the method by Xing et al. (2012) used here and based on the calculation of the mixed layer depth, and an alternative correction developed by Sackmann et al. (2008) based on the use of particulate optical backscattering, showed similar performances for BGC-Argo Chl measurements (X. Xing, unpublished data). As discussed by Xing et al. (2017), the correction of Chl profiles for non-algal matter disturbance by using alternative procedures with respect to the one applied here may also introduce errors, which vary regionally and are the highest in the Black Sea area ($\sim 0.1 \text{ mg m}^{-3}$), while the lowest are observed in the subpolar North Atlantic Ocean and Mediterranean Sea (~ 0.007 and 0.004 mg m^{-3} , respectively). A main challenge in quality-assessing fluorescence Chl measurements relies on the assumption of what is measured and what is actually phytoplankton biomass (Roesler et al., 2017). The fluorescence-to-chlorophyll ratio depends on changes in nutrient availability, growth phase, photophysiology, and taxonomic composition of algal communities (Cullen, 1982). This implies that calibration factors may change regionally and seasonally. Indeed, standard fluorometer corrections rely on the comparison with contemporaneous HPLC-determined chlorophyll concentrations, which are the most accurate estimates for phytoplank-

ton pigments. However, given the BGC-Argo particularity of sampling autonomously, over long periods and across different regions, any HPLC-based calibration performed at the time of the deployment may become invalid during the float's voyage. Haëntjens et al. (2017) recommend the use of radiometric data available on floats together with models (Xing et al., 2011) to systematically verify the calibration of the Chl fluorometer, and applied corrections, over time. In this study, no spatiotemporal variability in the fluorescence-to-chlorophyll ratio has been taken into account to correct BGC-Argo Chl measurements, and no radiometry-based corrections have been used to avoid redundancy among variables and derived quantities (i.e., $K_d(490)$). Only the correction for the instrument-induced bias recommended by Roesler et al. (2017) has been applied, though it might be insufficient and thus under-correct Chl values measured at high latitudes and especially in the Southern Ocean (Roesler et al., 2017). Chl profiles prior to the application of any quality-control procedures used here, including NPQ and the recommended calibration factor by Roesler et al. (2017), are also archived in BOPAD-prof so that alternative chains of protocols can be applied at the user's discretion.

FDOM measurements within BOPAD-prof appeared very noisy even after quality control and spike detection (see Sect. 3). However, using the profile in Fig. 4b as a specific example, the impact of the sensor sensitivity (0.28 ppb of quinine sulfate, \sim one digital count) on the measured values may be critical for surface measurements (Fig. 12b). Low FDOM values at the surface may be a result of the attenuation by other optically significant substances of the light fluoresced by the dissolved material (Downing et al., 2012) and/or be quenched as an effect of increasing temperature (Baker et al., 2005). No specific methods for BGC-Argo floats measurements are currently available to correct for the thermal fluorescence quenching properties, and it has been preferred to avoid implementation of published procedures (Wratas et al., 2011; Downing et al., 2012; Ryder et al., 2012) as they can be applied at the user's discretion.

Uncertainties related to the particulate optical backscattering, as acquired by WET Labs ECO sensors or instruments with similar or same technical and geometrical characteristics, have been discussed by already published studies (Dall'Olmo et al., 2009; Briggs et al., 2011; Sullivan et al., 2013; Poteau et al., 2017). Experimental errors may arise from multiple sources such as conversion and calibration coefficients (e.g., scaling factor and dark counts), instrument age, and sensor responsiveness to environmental factors such as temperature and light (Sullivan et al., 2013). The impact of the sensor sensitivity ($2.2 \times 10^{-6} \text{ m}^{-1}$) on the measured values is low (Fig. 12c). The combined uncertainty is generally less than 10 % (Sullivan et al., 2013), but it may increase up to about 30 % in most oligotrophic environments (Dall'Olmo et al., 2009). In particular, the recent analysis by Poteau et al. (2017), which includes the same BGC-Argo floats used in this study, suggests that more con-

sistent $b_{bp}(700)$ measurements would be achieved by taking into account a bias equal to $3.5 \times 10^{-5} \text{ m}^{-1}$ due to changes in dark counts from the time of the sensor's purchase to that of deployment. Disagreement between different sensor models measuring $b_{bp}(700)$ in the same areas may yield a bias of up to 30 % (Poteau et al., 2017).

Experimental uncertainties in radiometric profiles may arise from instrument tilt with respect to the vertical (maximum of $\pm 10\%$; E. Leymarie, unpublished data) and sensor calibration (2–4 %; Hooker et al., 2002). The shading of the float's antenna and conductivity–temperature–depth (CTD) sensor head is negligible for the $E_d(\lambda)$ sensor, except over a few degrees of the sun's azimuth (direct shading; E. Leymarie, unpublished data). The study by Briggs et al. (2017) on radiometers implemented on the PROVOR CTS4 BGC-Argo floats also evidences the dependency of sensor dark counts on ambient temperature. The uncertainty in factory dark measurements is the lowest near 20°C ($< 0.01 \mu\text{W cm}^{-2} \text{ nm}^{-1}$ for $E_d(\lambda)$; $< 1.4 \mu\text{mol quanta m}^{-2} \text{ s}^{-1}$ for PAR), for both $E_d(\lambda)$ and PAR. The highest errors occur when the radiometer operates near 0°C , as the uncertainty grows up to about $0.06 \mu\text{W cm}^{-2} \text{ nm}^{-1}$ for $E_d(490)$ and $2.6 \mu\text{mol quanta m}^{-2} \text{ s}^{-1}$ for PAR. Similarly, higher uncertainties are also observed when radiometric measurements are acquired around 30°C ($\sim 0.03 \mu\text{W cm}^{-2} \text{ nm}^{-1}$ for $E_d(412)$ and $E_d(490)$; Briggs et al., 2017) rather than near 20°C . It is important to note, however, that dark offsets generally affect profiles at depth as the irradiance drops to 0, whilst their impact is less than 1 % for the highest values at the top of the ocean (Organelli et al., 2016a).

In BOPAD-surf, the standard error is associated with each value of diffuse attenuation coefficient for downward irradiance and PAR ($K_d(\lambda)$ and $K_d(\text{PAR})$) as derived from the linear fit on log quantities within the first optical depth Z_{pd} (see Sect. 2.4). Errors can have an impact of up to 33 % on the measured coefficients, although the median value for the entire database is less than 5 % regardless of the waveband, with the minimum found for $K_d(380)$ (i.e., 3.4 %). Because Chl, FDOM, and $b_{bp}(700)$ represent the mean value of the profile within Z_{pd} , the standard deviations are archived in BOPAD-surf. The median value of the coefficient of variation (CV%; calculated as $100(\text{SD-to-mean ratio})$), for the entire database, is low for all three variables and around 5 % in the case of FDOM and $b_{bp}(700)$. The variability in Chl concentration is close to 0 % as a consequence of the application of the method by Xing et al. (2012), which corrects the NPQ by extrapolating the Chl value at the bottom of the mixed layer to the surface. More importantly, such a low variability in the observed variables suggests that they were homogeneously distributed within the first optical depth as derived from PAR measurements and that Z_{pd} was similar or shallower than the mixed layer depth.

7 Data availability

BOPAD-prof (Barbieux et al., 2017a) and BOPAD-surf (Organelli et al., 2016b) are publicly available from the SEANOE (SEA scieNtific Open data Edition) publisher at <https://doi.org/10.17882/49388> and <https://doi.org/10.17882/47142>, respectively. BOPAD-surf version 2 is the one used and described in this study. Float name, number of cycles, and profile, date, latitude, and longitude are reported in both databases. In BOPAD-prof, vertical profiles of Chl before quality control and $b_{bp}(700)$ with removal of positive spikes (see Sect. 2.4) are also included. BOPAD-surf includes standard errors of $K_d(\lambda)$ and $K_d(\text{PAR})$ as derived from a linear fit (see Sect. 2.4) and standard deviations of averaged Chl, FDOM, and $b_{bp}(700)$ values within the first optical depth. BGC-Argo raw data used in this study are publicly available online (Argo, 2000) and distributed as netCDF files. Vertical profiles of $b_{bp}(532)$ collected in the frame of the UK Bio-Argo (nine floats) and E-AIMS (five floats) projects can be downloaded at <https://doi.org/10.17882/42182> (Argo, 2000). Files included in BOPAD-prof and BOPAD-surf can be read in table format by using standard functions of most common programming languages.

8 Conclusions and recommendations for use

The first measurements of biogeochemical and bio-optical variables collected by the PROVOR CTS4 generation of autonomous BGC-Argo floats have been quality-controlled and synthesized into a single database of nearly 10 000 vertical profiles (BOPAD-prof), collected in just 3 years despite meteorological conditions in several oceanic areas with depths greater than 1000 m. Profile-derived bio-optical variables within the first optical depth have also been condensed into a database dedicated to support field and remote bio-optical applications (BOPAD-surf). Spatial and temporal coverages have been presented. Possible uncertainties for each variable have been provided.

The two databases presented here can be directly exploited for several applications, from biogeochemistry and primary production estimation and modeling, to the analysis of the physical forcing on biology together with the assessment of any seasonal and sub-seasonal dependence, and to the evaluation of the ocean's bio-optical variability. For specific examples based on same PROVOR CTS4 profiling floats included in this study, the reader is referred to the works by

Dall'Olmo and Mork (2014) and Poteau et al. (2017) for estimation and analysis of particulate organic carbon concentrations and fluxes; Lacour et al. (2017), Mignot et al. (2017), and Stanev et al. (2017) for observing the impact of physical drivers on biology; and Organelli et al. (2017) and Barbieux et al. (2017b) for analysis of the variability in diffuse attenuation coefficients for downward irradiance and particulate optical backscattering-to-chlorophyll ratios across different oceanic areas, respectively. It is worth noting that the latter two studies have been pursued by exclusively exploiting BOPAD-surf and BOPAD-prof. The new and systematic way BGC-Argo floats collect data, and their potential in dramatically increasing oceanic observations in a restricted time, also supplement and complement published carbon cycle and optically relevant pan-oceanic data compilations (Peloquin et al., 2013; Sauzède et al., 2015; Bakker et al., 2016; Mouw et al., 2016; Valente et al., 2016).

BOPAD-surf has also proved to directly support ocean color algorithm and product validation. Online platforms (i.e., <http://seasiderendezvous.eu>) are already available to support nearly real-time ocean color applications and interactive management of BGC-Argo profiles. We remind readers that, according to the specific use intended for these data, further processing may be needed. Additional corrections, e.g., dark counts and temperature dependence for radiometric or FDOM measurements, might be required at the user's discretion. Additional or regional adjustments on the calibration factor for chlorophyll fluorescence might also be needed (Roesler et al., 2017). The quality-control procedures applied here remove only major, known sensor issues.

Finally, these two databases are a first step to provide users with the unprecedented quantity of autonomous in situ measurements processed with common internationally accepted procedures. However, due to the characteristics of the Biogeochemical-Argo network (Johnson and Claustre, 2016; Biogeochemical Argo Group, 2016) and its youthfulness, both databases are likely to evolve as new regions are explored, improved vertical and temporal frequency is achieved, and more advanced quality-control procedures are developed. Therefore, it is expected that BOPAD-prof and BOPAD-surf could be amended and/or enriched in the future with new quality-controlled profiles and products, or they might be merged with other already-operating configurations of autonomous profiling floats and sensors (e.g., Johnson et al., 2017). The way the two databases have been built makes them potentially fully interoperable with future compilations.

Appendix A

Table A1. Region, basin, abbreviation, and a list of the BGC-Argo floats for the 25 geographic regions included in the Biogeochemical-Argo database. Lifetime and average profile interval for each float is shown. Research project and principal investigator are also reported for each float. Note that the total number of floats is > 105 because some floats moved across two or more basins during their lifetime. An average profile interval of > 10 days indicates a temporary loss of communication between the server and the profiling float, which resulted in periods of inactivity. Dates in the table are given as dd/mm/yy.

Region	Sub-region	Basin	Abbr.	Float WMO	PI	Project	Date of first profile	Date of last profile	Lifetime (days)	Profile no.	Average profile interval (days)
Arctic Sea		Norwegian Sea	NOR	6902547	Mork K. A.	E-AIMS	24/01/14	14/12/15	690	139	4.96
Black Sea		Black Sea	BLACK	7900591	Slabakova V.	E-AIMS	20/12/13	23/09/15	643	98	6.56
				7900592	Slabakova V.	E-AIMS	24/12/13	25/10/14	306	29	10.55
				6900807	Balan S.	GeoEcoMar	11/12/14	02/01/16	388	74	5.24
				6901866	Poulain P.-M.	Argo Italy	06/06/15	02/01/16	576	43	13.40
Mediterranean Sea	Western Mediterranean Sea	Northwestern	NW	6901032	D'Ortenzio F.	NAOS	26/11/12	25/01/13	61	20	3.05
				6902700	D'Ortenzio F.	NAOS	08/11/15	04/01/16	58	36	1.61
				6901512	D'Ortenzio F.	NAOS	11/04/13	04/05/14	389	143	2.72
				6901511	D'Ortenzio F.	NAOS	20/02/13	17/06/13	118	102	1.16
				6901653	Conan P.	Bio-Argo France	09/07/14	05/03/15	240	67	3.58
				6901496	Claustre H.	NAOS	18/07/13	13/03/14	239	81	2.95
				6901776	Claustre H.	NAOS	17/03/14	27/09/14	195	59	3.31
				6901649	Coppola L.	Bio-Argo France	17/07/14	27/05/15	315	84	3.75
				6901648	Conan P.	Bio-Argo France	09/07/14	04/01/16	545	137	3.98
		Southwestern	SW	6901513	D'Ortenzio F.	NAOS	11/05/13	23/03/15	682	161	4.24
				6901511	D'Ortenzio F.	NAOS	22/06/13	10/09/14	446	117	3.81
				6901653	Conan P.	Bio-Argo France	07/03/15	01/01/16	301	67	4.49
				6901649	Coppola L.	Bio-Argo France	01/06/15	05/01/16	219	47	4.66
				6901600	D'Ortenzio F.	NAOS	24/08/14	19/11/15	453	79	5.73
				6901861	Poulain P.-M.	Argo Italy	28/05/14	27/02/15	276	64	4.31
		Tyrrhenian Sea	TYR	6901483	D'Ortenzio F.	NAOS	25/07/13	27/03/14	246	57	4.32
				6901490	D'Ortenzio F.	NAOS	18/06/13	07/07/13	20	7	2.86
				6901491	D'Ortenzio F.	NAOS	18/06/13	30/05/15	712	167	4.26
				6901767	D'Ortenzio F.	NAOS	02/06/15	04/01/16	217	47	4.62
				6901769	D'Ortenzio F.	NAOS	02/06/15	04/01/16	217	47	4.62
				6901864	Poulain P.-M.	Argo Italy	02/06/15	02/01/16	215	47	4.57
	Eastern Mediterranean Sea	Ionian Sea	ION	6901510	D'Ortenzio F.	NAOS	28/05/13	26/05/15	729	175	4.17
				6901529	D'Ortenzio F.	NAOS	28/05/13	10/02/15	624	135	4.62
				6901605	D'Ortenzio F.	NAOS	13/02/14	22/05/14	99	35	2.83
				6901768	D'Ortenzio F.	NAOS	20/05/15	05/01/16	231	55	4.20
				6901771	D'Ortenzio F.	NAOS	01/06/15	04/01/16	218	48	4.54
				6901862	Poulain P.-M.	Argo Italy	29/03/15	02/01/16	280	112	2.50
				6901863	Poulain P.-M.	Argo Italy	29/05/15	02/01/16	219	51	4.29
				6901865	Poulain P.-M.	Argo Italy	21/02/14	24/03/15	397	118	3.36
		Levantine Sea	LEV	6901528	D'Ortenzio F.	NAOS	18/05/13	23/05/15	736	184	4.00
				6901655	D'Ortenzio F.	NAOS	04/08/14	21/05/15	291	79	3.68
				6901764	D'Ortenzio F.	NAOS	26/05/15	02/01/16	222	46	4.83
				6901765	D'Ortenzio F.	NAOS	25/05/15	01/01/16	222	48	4.63
				6901766	D'Ortenzio F.	NAOS	26/05/15	03/01/16	223	55	4.05
				6901770	D'Ortenzio F.	NAOS	23/05/15	02/01/16	225	49	4.59
				6901773	D'Ortenzio F.	NAOS	25/05/15	05/01/16	226	50	4.52
North Atlantic Ocean	Subpolar gyre	Labrador Sea	LAS	6901521	Claustre H.	remOcean	17/05/13	06/04/14	325	66	4.92
				6901522	Claustre H.	remOcean	17/05/13	18/05/13	2	2	1.00
				6901524	Claustre H.	remOcean	19/05/13	27/12/15	953	167	5.71
				6901526	Claustre H.	remOcean	19/05/13	06/06/13	19	19	1.00
				6901517	Claustre H.	remOcean	26/01/14	25/02/14	31	6	5.17
				6901480	Claustre H.	remOcean	13/05/14	27/12/15	594	148	4.01
				6901481	Claustre H.	remOcean	16/11/13	06/03/14	111	15	7.40
				6901482	Claustre H.	remOcean	26/12/14	30/01/15	36	4	9.00
				6901523	Claustre H.	remOcean	17/05/13	17/03/14	305	62	4.92
				6901523	Claustre H.	remOcean	04/06/15	22/06/15	23	7	3.29
				6901527	Claustre H.	remOcean	19/05/13	27/12/15	953	213	4.47
				6901489	Claustre H.	remOcean	02/04/14	26/02/15	331	57	5.81
				6901525	Claustre H.	remOcean	19/05/13	14/05/14	361	153	2.36
				6901484	Claustre H.	remOcean	05/01/14	06/03/14	61	10	6.10
				6901485	Claustre H.	remOcean	13/08/14	30/01/15	171	23	7.43
				6901486	Claustre H.	remOcean	26/02/14	05/01/16	679	175	3.88
		Irminger Sea	IRM	6901517	Claustre H.	remOcean	28/10/13	16/01/14	81	9	9.00
				6901480	Claustre H.	remOcean	24/06/13	11/05/14	322	117	2.75
				6901481	Claustre H.	remOcean	19/06/13	06/11/13	141	31	4.55
				6901482	Claustre H.	remOcean	19/06/13	26/12/14	556	96	5.79
				6901523	Claustre H.	remOcean	22/03/14	01/06/15	437	85	5.14
				6901519	Claustre H.	remOcean	17/12/14	08/04/15	113	21	5.38
				6901489	Claustre H.	remOcean	26/06/13	28/03/14	276	47	5.87
				6901484	Claustre H.	remOcean	19/06/13	26/12/13	191	24	7.96
				6901485	Claustre H.	remOcean	23/06/13	08/08/14	412	73	5.64
				6901486	Claustre H.	remOcean	23/06/13	21/02/14	244	39	6.26
				6901646	Claustre H.	remOcean	18/06/14	06/02/15	234	62	3.77

Table A1. Continued.

Region	Sub-region	Basin	Abbr.	Float WMO	PI	Project	Date of first profile	Date of last profile	Lifetime (days)	Profile no.	Average profile interval (days)	
North Atlantic	Subpolar gyre	Iceland Basin	ICB	6901520	Claustre H.	remOcean	20/04/13	27/11/13	222	62	3.58	
				6901515	Claustre H.	remOcean	20/04/13	02/03/14	317	65	4.88	
				6901516	Claustre H.	remOcean	20/04/13	04/01/16	990	337	2.94	
				6901517	Claustre H.	remOcean	20/04/13	18/10/13	182	40	4.55	
				6901518	Claustre H.	remOcean	20/04/13	28/08/13	131	98	1.34	
				6901519	Claustre H.	remOcean	20/04/13	07/12/14	597	104	5.74	
				6901514	Claustre H.	remOcean	20/04/13	21/06/13	63	35	1.80	
				6901647	Thierry V.	Bio-Argo France	11/06/14	01/01/16	570	152	3.75	
		South Labrador Sea	SLAS	6901180	Dall'Olmo G.	UK Bio-Argo	16/11/15	28/12/15	43	27	1.59	
	6901181			Dall'Olmo G.	UK Bio-Argo	15/11/15	05/01/16	52	35	1.49		
	Subtropical gyre	Transition zone	NASTZ	6901525	Claustre H.	remOcean	16/05/14	04/01/16	599	139	4.31	
		Subtropical gyre	NASTG	6901474	Claustre H.	remOcean	27/10/12	18/10/14	722	70	10.31	
				6901475	Claustre H.	remOcean	27/10/12	24/01/13	90	85	1.06	
				6901472	Claustre H.	remOcean	26/10/12	02/01/16	1164	120	9.70	
				6901473	Claustre H.	remOcean	25/10/12	20/02/15	849	88	9.65	
		Eastern sub-tropical gyre	ENASTG	6901151	Dall'Olmo G.	E-AIMS	17/11/13	03/01/15	413	35	11.80	
				6901152	Dall'Olmo G.	E-AIMS	23/10/13	21/04/15	546	110	4.96	
		Western sub-tropical gyre	WNASTG	6901182	Dall'Olmo G.	UK Bio-Argo	01/01/16	05/01/16	5	5	1.00	
				6901183	Dall'Olmo G.	UK Bio-Argo	30/12/15	05/01/16	7	7	1.00	
	Transition zone	EQNASTZ	6901174	Dall'Olmo G.	UK Bio-Argo	16/10/14	05/01/16	447	94	4.76		
			6901175	Dall'Olmo G.	UK Bio-Argo	17/10/14	05/01/16	446	93	4.80		
Red Sea	Red Sea	RED	6901577	Claustre H.	remOcean	03/10/15	03/01/16	93	31	3.00		
			6901573	Claustre H.	remOcean	02/10/15	06/01/16	97	44	2.20		
South Atlantic Ocean	Subtropical gyre	SASTG	6901437	Claustre H.	remOcean	11/11/12	28/10/15	1082	103	10.50		
			6901439	Claustre H.	remOcean	10/11/12	03/08/13	267	265	1.01		
			6901440	Claustre H.	remOcean	10/11/12	15/11/12	6	6	1.00		
	South subtropical gyre	SSASTG	3901496	Dall'Olmo G.	UK Bio-Argo	23/10/14	01/01/16	436	108	4.04		
	Transition zone	SASTZ	3901497	Dall'Olmo G.	UK Bio-Argo	29/10/14	05/01/16	434	107	4.06		
3901498	Dall'Olmo G.	UK Bio-Argo	29/10/14	05/01/16	434	107	4.06					
South Pacific Ocean	Subtropical gyre	SPSTG	6901659	Claustre H.	remOcean	16/10/15	04/01/16	81	81	1.00		
			6901660	Petrenko A.	Bio-Argo France	31/03/15	03/01/16	279	63	4.43		
			6901687	Claustre H.	remOcean	05/04/15	02/01/16	273	137	1.99		
	New Caledonia	NC	6901656	Petrenko A.	Bio-Argo France	05/03/15	03/01/16	305	68	4.49		
			6901658	Petrenko A.	Bio-Argo France	23/03/15	03/01/16	287	71	4.04		
Southern Ocean	Atlantic sector	ATL	6901650	Sallée J.-B.	Bio-Argo France	09/05/15	26/06/15	49	49	1.00		
			6901654	Claustre H.	remOcean	09/05/15	05/01/16	241	241	1.00		
			6901651	Claustre H.	remOcean	21/10/14	22/10/14	2	2	1.00		
	Atlantic to Indian sector	ATOI	6901582	Claustre H.	remOcean	11/12/14	05/01/16	391	89	4.39		
			6901583	Claustre H.	remOcean	07/05/15	05/01/16	244	56	4.36		
			6901576	Claustre H.	remOcean	11/12/14	04/01/16	390	102	3.82		
			6901575	Claustre H.	remOcean	07/05/15	05/01/16	244	53	4.60		
			6901584	Claustre H.	remOcean	13/05/15	05/01/16	238	68	3.50		
			6901585	Claustre H.	remOcean	13/12/14	04/01/16	388	85	4.56		
			6901492	Speich S.	Bio-Argo France	04/12/13	05/01/16	763	177	4.31		
			6901493	Speich S.	Bio-Argo France	05/12/13	04/01/16	762	167	4.56		
			6901578	Claustre H.	remOcean	13/05/15	03/01/16	236	73	3.23		
			6901688	Claustre H.	remOcean	13/12/14	16/08/15	247	40	6.18		
			Indian sector	IND	6901004	Claustre H.	remOcean	26/01/15	05/01/16	345	84	4.11
					6901580	Claustre H.	remOcean	26/01/15	04/01/16	344	102	3.37
					6901574	Claustre H.	remOcean	23/01/15	05/01/16	348	131	2.66
					6901581	Claustre H.	remOcean	24/01/15	05/01/16	347	161	2.16
					6901579	Claustre H.	remOcean	23/01/15	05/01/16	348	129	2.70
	6901689	Claustre H.			remOcean	24/01/15	25/04/15	92	46	2.00		
	Average \pm standard deviation								332 \pm 248	81 \pm 58	4 \pm 2	

Competing interests. The authors declare that they have no conflict of interest.

Acknowledgements. This study received funds and support from the following research projects: remOcean (funded by the European Research Council, grant agreement no. 246777), NAOS (funded by the Agence Nationale de la Recherche in the frame of the French “Equipeement d’avenir” program, grant agreement no. ANR J11R107-F), AtlantOS (funded by the European Union’s Horizon 2020 research and innovation program, grant agreement no. 2014-633211), E-AIMS (funded by the European Commission’s FP7 project, grant agreement no. 312642), UK Bio-Argo (funded by the Natural Environment Research Council, grant agreement no. NE/L012855/1), REOPTIMIZE (funded by the European Union’s Horizon 2020 research and innovation program, Marie Skłodowska-Curie grant agreement no. 706781), Argo-Italy (funded by the Italian Ministry of Education, University and Research, MIUR), and the French Bio-Argo program (Bio-Argo France; funded by CNES-TOSCA, LEFE Cyber, and GMMC). We thank the principal investigators of several BGC-Argo float missions and projects: Sorin Balan (GeoEcoMar, Romania), Pascal Conan (Observatoire Océanologique de Banyuls sur mer, France; Bio-Argo France), Laurent Coppola (Laboratoire d’Océanographie de Villefranche, France; Bio-Argo France), Claire Lo Monaco (Laboratoire d’Océanographie et du Climat, France; OISO program), Kjell Arne Mork (Institute of Marine Research, Norway; E-AIMS), Anne Petrenko (Mediterranean Institute of Oceanography, France; Bio-Argo France), Pierre-Marie Poulain (National Institute of Oceanography and Experimental Geophysics, Italy; Argo-Italy), Jean-Baptiste Sallée (Laboratoire d’Océanographie et du Climat, France; Bio-Argo France), Violeta Slabakova (Bulgarian Academy of Sciences, Bulgaria; E-AIMS), Sabrina Speich (Laboratoire de Météorologie Dynamique, France; Bio-Argo France), Emil Stanev (University of Oldenburg, Germany; E-AIMS), and Virginie Thierry (Ifremer, France; Bio-Argo France). We also thank the Coriolis program for providing standard Argo floats to be equipped with additional bio-optical and biogeochemical sensors. Sandy Thomalla (CSIR, South Africa) and the anonymous reviewer are acknowledged for constructive comments and suggestions on a previous version of the paper.

Edited by: David Carlson

Reviewed by: Sandy Thomalla and one anonymous referee

References

ACRI-ST GlobColour Team: GlobColour Product User Guide (Version 4.1), Ref: GC-UM-ACR-PUG-01, 107 pp., available at: <http://www.globcolour.info> (last access: 19 November 2017), 2017.

Alkire, M. B., D’Asaro, E., Lee, C., Perry, M. J., Gray, A., Cetinić, I., Briggs, N., Rehm, E., Kallin, E., Kaiser, J., and González-Posada, A.: Estimates of net community production and export using high-resolution, Lagrangian measurements of O_2 , NO_3^- , and POC through the evolution of a spring diatom bloom in the North Atlantic, *Deep-Sea Res. Pt. I*, 64, 157–174, 2012.

Argo: Argo float data and metadata from Global Data Assembly Centre (Argo GDAC), SEANOE, <https://doi.org/10.17882/42182>, 2000.

Austin, R. W.: The remote sensing of spectral radiance from below the ocean surface, *Optical Aspects of Oceanography*, edited by: Jerlov, N. G. and Steemann-Nielsen, E. (Eds.), Elsevier, 317–344, 1974.

Baker, A.: Thermal fluorescence quenching properties of dissolved organic matter, *Water Res.*, 39, 4405–4412, <https://doi.org/10.1016/j.watres.2005.08.023>, 2005.

Bakker, D. C. E., Pfeil, B., Landa, C. S., Metzl, N., O’Brien, K. M., Olsen, A., Smith, K., Cosca, C., Harasawa, S., Jones, S. D., Nakaoka, S.-I., Nojiri, Y., Schuster, U., Steinhoff, T., Sweeney, C., Takahashi, T., Tilbrook, B., Wada, C., Wanninkhof, R., Alin, S. R., Balestrini, C. F., Barbero, L., Bates, N. R., Bianchi, A. A., Bonou, F., Boutin, J., Bozec, Y., Burger, E. F., Cai, W.-J., Castle, R. D., Chen, L., Chierici, M., Currie, K., Evans, W., Featherstone, C., Feely, R. A., Fransson, A., Goyet, C., Greenwood, N., Gregor, L., Hankin, S., Hardman-Mountford, N. J., Harlay, J., Hauck, J., Hoppema, M., Humphreys, M. P., Hunt, C. W., Huss, B., Ibáñez, J. S. P., Johannessen, T., Keeling, R., Kitidis, V., Körtzinger, A., Kozyr, A., Krasakopoulou, E., Kuwata, A., Landschützer, P., Lauvset, S. K., Lefèvre, N., Lo Monaco, C., Manke, A., Mathis, J. T., Merlivat, L., Millero, F. J., Monteiro, P. M. S., Munro, D. R., Murata, A., Newberger, T., Omar, A. M., Ono, T., Paterson, K., Pearce, D., Pierrot, D., Robbins, L. L., Saito, S., Salisbury, J., Schlitzer, R., Schneider, B., Schweitzer, R., Sieger, R., Skjelvan, I., Sullivan, K. F., Sutherland, S. C., Sutton, A. J., Tadokoro, K., Telszewski, M., Tuma, M., van Heuven, S. M. A. C., Vandemark, D., Ward, B., Watson, A. J., and Xu, S.: A multi-decade record of high-quality fCO_2 data in version 3 of the Surface Ocean CO_2 Atlas (SOCAT), *Earth Syst. Sci. Data*, 8, 383–413, <https://doi.org/10.5194/essd-8-383-2016>, 2016.

Barbier, M., Organelli, E., Claustre, H., Schmechtig, C., Poteau, A., Boss, E., Bricaud, A., Briggs, N., Dall’Olmo, G., D’Ortenzio, F., Prieur, L., Roesler, C., Uitz, J., and Xing, X.: A global database of vertical profiles derived from Biogeochemical Argo float measurements for biogeochemical and bio-optical applications, SEANOE, <https://doi.org/10.17882/49388>, 2017a.

Barbier, M., Uitz, J., Bricaud, A., Organelli, E., Poteau, A., Schmechtig, C., Gentili, B., Penker, C., Leymarie, E., D’Ortenzio, F., and Claustre, H.: Assessing the variability in the relationship between the particulate backscattering coefficient and the chlorophyll a concentration from a global Biogeochemical-Argo database, *J. Geophys. Res.-Oceans*, in revision, 2017b.

Biogeochemical-Argo Planning Group: The scientific rationale, design and implementation plan for a Biogeochemical-Argo float array, edited by: Johnson, K. and Claustre, H., <https://doi.org/10.13155/46601>, 2016.

Bishop, J. K. B., Davis, R. E., and Sherman, J. T.: Robotic observations of dust storm enhancement of carbon biomass in the North Pacific, *Science*, 298, 817–821, 2002.

Boss, E. and Behrenfeld, M.: In situ evaluation of the initiation of the North Atlantic phytoplankton bloom, *Geophys. Res. Lett.*, 37, L18603, <https://doi.org/10.1029/2010GL044174>, 2010.

Boss, E., Swift, D., Taylor, L., Brickley, P., Zaneveld, R., Riser, S., Perry, M. J., and Strutton, P. G.: Observations of pigment and particle distributions in the western North Atlantic from an au-

- onomous float and ocean color satellite, *Limnol. Oceanogr.*, 53, 2112–2122, 2008.
- Briggs, N., Perry, M. J., Cetinić, I., Lee, C., D'Asaro, E., Gray, A. M., and Rehm, E.: High-resolution observations of aggregate flux during a sub-polar North Atlantic spring bloom, *Deep-Sea Res. Pt. I*, 58, 1031–1039, 2011.
- Briggs, N., Poteau, A., Cornec, M., Xing, X., Organelli, E., and Claustre, H.: Protocol for correcting temperature dependence of radiometer dark counts aboard profiling floats, in preparation, 2017.
- Cetinić, I., Perry, M. J., Briggs, N. T., Kallin, E., D'Asaro, E. A., and Lee, C. M.: Particulate organic carbon and inherent optical properties during 2008 North Atlantic Bloom Experiment, *J. Geophys. Res.*, 117, C06028, <https://doi.org/10.1029/2011JC007771>, 2012.
- Claustre, H., Antoine, D., Boehme, L., Boss, E., D'Ortenzio, F., Fanton D'Andon, O., Guinet, C., Gruber, N., Handegard, N. O., Hood, M., Johnson, K., Körtzinger, A., Lampitt, R., LeTraon, P.-Y., Le Quéré, C., Lewis, M., Perry, M. J., Platt, T., Roemmich, D., Sathyendranath, S., Send, U., Testor, P., and Yoder, J.: Guidelines towards an integrated ocean observation system for ecosystems and biogeochemical cycles, *Proceedings of OceanObs'09: Sustained Ocean Observations and Information for Society*, edited by: Hall, J., Harrison, D. E., and Stammer, D., Vol. 1, ESA Publ. WPP-306, <https://doi.org/10.5270/OceanObs09.pp.14>, 2010a.
- Claustre, H., Bishop, J., Boss, E., Bernard, S., Berthon, J.-F., Coatanoan, C., Johnson, K., Lotiker, A., Ulloa, O., Perry, M. J., D'Ortenzio, F., Fanton D'Andon, O. H., and Uitz, J.: Bio-optical profiling floats as new observational tools for biogeochemical and ecosystem studies: Potential synergies with ocean color remote sensing, *Proceedings of OceanObs'09: Sustained Ocean Observations and Information for Society*, edited by: Hall, J., Harrison, D. E., and Stammer, D., Vol. 2, ESA Publ. WPP-306, <https://doi.org/10.5270/OceanObs09.cwp.17>, 2010b.
- Cullen, J. J.: The deep chlorophyll maximum: comparing vertical profiles of chlorophyll *a*, *Can. J. Fish. Aquat. Sci.*, 39, 791–803, 1982.
- Dall'Olmo, G. and Mork, K. A.: Carbon export by small particles in the Norwegian Sea, *Geophys. Res. Lett.*, 41, 2921–2927, <https://doi.org/10.1002/2014GL059244>, 2014.
- Dall'Olmo, G., Westberry, T. K., Behrenfeld, M. J., Boss, E., and Slade, W. H.: Significant contribution of large particles to optical backscattering in the open ocean, *Biogeosciences*, 6, 947–967, <https://doi.org/10.5194/bg-6-947-2009>, 2009.
- Dall'Olmo, G., Boss, E., Behrenfeld, M. J., and Westberry, T. K.: Particulate optical scattering coefficients along an Atlantic Meridional Transect, *Opt. Express*, 20, 21532–21551, 2012.
- Dong, S., Sprintall, J., Gille, S. T., and Talley, L.: Southern Ocean mixed-layer depth from Argo float profiles, *J. Geophys. Res.-Oceans*, 113, C06013, <https://doi.org/10.1029/2006JC004051>, 2008.
- D'Ortenzio, F. and Ribera d'Alcalà, M.: On the trophic regimes of the Mediterranean Sea: a satellite analysis, *Biogeosciences*, 6, 139–148, <https://doi.org/10.5194/bg-6-139-2009>, 2009.
- D'Ortenzio, F., Iudicone, D., de Boyer Montegut, C., Testor, P., Antoine, D., Marullo, S., Santoleri, R., and Madec, G.: Seasonal variability of the mixed layer depth in the Mediterranean Sea as derived from in situ profiles, *Geophys. Res. Lett.*, 32, L12605, <https://doi.org/10.1029/2005GL022463>, 2005.
- Downing, B. D., Pellerin, B. A., Bergamaschi, B. A., Saraceno, J. F., and Kraus, T. E. C.: Seeing the light: The effects of particles, dissolved materials, and temperature on in situ measurements of DOM fluorescence in river and streams, *Limnol. Oceanogr.-Meth.*, 10, 767–775, 2012.
- Gerbi, G., Boss, E., Werdell, J., Proctor, C., Haëntjens, N., Lewis, M., Brown, K., Sorrentino, D., Zaneveld, J. R. V., Barnard, A. H., Koegler, J., Fargher, H., DeDonato, M., and Wallace, W.: Validation of ocean color remote sensing reflectance using autonomous floats, *J. Atmos. Ocean. Tech.*, 33, 2331–2352, <https://doi.org/10.1175/JTECH-D-16-0067.1>, 2016.
- Gordon, H. R. and McCluney, W. R.: Estimation of the depth of sun light penetration in the sea for remote sensing, *Appl. Optics*, 14, 413–416, 1975.
- Gregg, W. W. and Carder, K. L.: A simple spectral solar irradiance model for cloudless maritime atmospheres, *Limnol. Oceanogr.*, 35, 1657–1675, <https://doi.org/10.4319/lo.1990.35.8.1657>, 1990.
- Haëntjens, N., Boss, E., and Talley, L. D.: Revisiting Ocean Color algorithms for chlorophyll *a* and particulate organic carbon in the Southern Ocean using biogeochemical floats, *J. Geophys. Res.-Oceans*, 122, 6583–6593, <https://doi.org/10.1002/2017JC012844>, 2017.
- Hall, J., Harrison, D. E., and Stammer, D.: Conference Statement, *Proceedings of OceanObs'09: Sustained Ocean Observations and Information for Society*, edited by: Hall, J., Harrison, D. E., and Stammer, D., Vol. 1, ESA Publication WPP-306, <https://doi.org/10.5270/OceanObs09.Statement>, 2010.
- Hooker, S. B., McLean, S., Sherman, J., Small, M., Lazin, G., Zibordi, G., and Brown, J. W.: The Seventh SeaWiFS Intercalibration Round-Robin Experiment (SIRREX-7), March 1999, edited by: Hooker, S. B. and Firestone, E. R., *SeaWiFS Postlaunch Technical Report Series*, Vol. 17 NASA Technical memorandum No. 2002 – 206892, Greenbelt: NASA Goddard Space Flight Center, 2002.
- IOCCG: Bio-optical sensors on Argo floats, *IOCCG Report Series* 11, 89 pp., 2011.
- IOCCG: Proceedings of the 2015 International Ocean Colour Science Meeting, 45 pp., IOCCG, San Francisco, Calif., 2015.
- Johnson, K. S. and Claustre, H.: Bringing biogeochemistry into the Argo age, *Eos*, 97, <https://doi.org/10.1029/2016EO062427>, 2016.
- Johnson, K. S., Berelson, W. M., Boss, E., Chase, Z., Claustre, H., Emerson, S. R., Gruber, N., Körtzinger, A., Perry, M. J., and Riser, S. C.: Observing biogeochemical cycles at global scales with profiling floats and gliders: Prospects for a global array, *Oceanography*, 22, 216–225, <https://doi.org/10.5670/oceanog.2009.81>, 2009.
- Johnson, K. S., Plant, J. N., Coletti, L. J., Jannasch, H. W., Sakamoto, C. M., Riser, S. C., Swift, D. D., Williams, N. L., Boss, E., Haëntjens, N., Talley, L. D., and Sarmiento, J. L.: Biogeochemical sensor performance in the SOCCOM profiling float array, *J. Geophys. Res.-Oceans*, 122, 6416–6436, <https://doi.org/10.1002/2017JC012838>, 2017.
- Kiefer, D. A.: Fluorescence properties of natural phytoplankton populations, *Mar. Biol.*, 22, 263–269, 1973.
- Lacour, L., Claustre, H., Prieur, L., and D'Ortenzio, F.: Phytoplankton biomass cycles in the North Atlantic subpolar gyre: A similar mechanism for two different blooms

- in the Labrador Sea, *Geophys. Res. Lett.*, 42, 5403–5410, <https://doi.org/10.1002/2015GL064540>, 2015.
- Lacour, L., Ardyna, M., Stec, K. F., Claustre, H., Prieur, L., Poteau, A., Ribera D'Alcalà, M., and Iudicone D.: Unexpected winter phytoplankton blooms in the North Atlantic subpolar gyre, *Nat. Geosci.*, 10, 836–839, <https://doi.org/10.1038/NCEO3035>, 2017.
- Lee, Z., Weidemann, A., Kindle, J., Arnone, R., Carder, K. L., and Davis, C.: Euphotic zone depth: Its derivation and implication to ocean-color remote sensing, *J. Geophys. Res.*, 112, C03009, <https://doi.org/10.1029/2006JC003802>, 2007.
- Leymarie, E., Poteau, A., Andre, X., Besson, F., Brault, P., Claustre, H., David, A., D'Ortenzio, F., Dufour, A., Lavigne, H., Le Reste, S., Le Traon, P.-Y., Migon, C., Nogre, D., Obolensky, G., Penker'h, C., Sagot, J., Schaeffer, C., Schmechtig, C., and Tailandier, V.: Development and validation of the new ProvBioII float, *Mercator Ocean-quarterly newsletter*, 48, 26–30, 2013.
- Matsuoka, A., Boss, E., Babin, M., Karp-Boss, L., Hafez, M., Chekalyuk, A., Proctor, C. W., Werdell, P. J., and Bricaud, A.: Pan-Arctic optical characteristics of colored dissolved organic matter: tracing dissolved organic carbon in changing Arctic waters using satellite ocean color data, *Remote Sens. Environ.*, 200, 89–101, 2017.
- Mignot, A., Ferrari, R., and Claustre, H.: Floats with bio-optical sensors reveal what processes trigger the North Atlantic bloom, *Nat. Commun.*, in press, 2017.
- Morel, A.: Optical modeling of the upper ocean in relation to its biogenous matter content (Case I waters), *J. Geophys. Res.*, 93, 10749–10768, 1988.
- Morel, A. and Maritorena, S.: Bio-optical properties of oceanic waters: a reappraisal, *J. Geophys. Res.*, 106, 7163–7180, 2001.
- Morel, A., Huot, Y., Gentili, B., Werdell, P. J., Hooker, S. B., and Franz, B. A.: Examining the consistency of products derived from various ocean color sensors in open ocean (Case 1) waters in the perspective of a multi-sensor approach, *Remote Sens. Environ.*, 111, 69–88, 2007a.
- Morel, A., Claustre, H., Antoine, D., and Gentili, B.: Natural variability of bio-optical properties in Case 1 waters: attenuation and reflectance within the visible and near-UV spectral domains, as observed in South Pacific and Mediterranean waters, *Biogeosciences*, 4, 913–925, <https://doi.org/10.5194/bg-4-913-2007>, 2007b.
- Mouw, C. B., Barnett, A., McKinley, G. A., Gloege, L., and Pilcher, D.: Global ocean particulate organic carbon flux merged with satellite parameters, *Earth Syst. Sci. Data*, 8, 531–541, <https://doi.org/10.5194/essd-8-531-2016>, 2016.
- Mueller, J. L., Morel, A., Frouin, R., Davis, C., Arnone, R., Carder, K., Lee, Z. P., Steward, R. G., Hooker, S., Mobley, C., McLean, S., Holben, B., Miller, M., Pietras, C., Knobelspiesse, K. D., Fargion, G. S., Porter, J., and Voss, K.: Radiometric measurements and Data Analysis Protocols, Mueller, J. L., Fargion, G. S., and McClain, C. R. (Eds.): *Ocean Optics Protocols for Satellite Ocean Color Sensor Validation*, Rev. 4, Volume 3 NASA Technical memorandum No 2003-21621, Greenbelt: NASA Goddard Space Flight Center, 2003.
- Munk, W. M.: Oceanography before, and after, the advent of satellites, in: *Satellites, oceanography and society*, edited by: Halpern, D., Elsevier, 1–4, 2000.
- Nelson, N. B. and Gauglitz, J. M.: Optical signatures of dissolved organic matter transformation in the global ocean, *Front. Mar. Sci.*, 2, 118, <https://doi.org/10.3389/fmars.2015.00118>, 2016.
- Nelson, N. B., Siegel, D. A., Carlson, C. A., and Swan, C.: Tracing global biogeochemical cycles and meridional overturning circulation using chromophoric dissolved organic matter, *Geophys. Res. Lett.*, 37, L03610, <https://doi.org/10.1029/2009GL042325>, 2010.
- Organelli, E., Bricaud, A., Antoine, D., and Matsuoka, A.: Seasonal dynamics of light absorption by Chromophoric Dissolved Organic Matter (CDOM) in the NW Mediterranean Sea (BOUSSOLE site), *Deep-Sea Res. Pt. I*, 91, 72–85, 2014.
- Organelli, E., Claustre, H., Bricaud, A., Schmechtig, C., Poteau, A., Xing, X., Prieur, L., D'Ortenzio, F., Dall'Olmo, G., and Vellucci, V.: A novel near-real-time quality-control procedure for radiometric profiles measured by Bio-Argo floats: protocols and performances, *J. Atmos. Ocean. Tech.*, 33, 937–951, <https://doi.org/10.1175/JTECH-D-15-0193.1>, 2016a.
- Organelli, E., Barbieux, M., Claustre, H., Schmechtig, C., Poteau, A., Bricaud, A., Uitz, J., D'Ortenzio, F., and Dall'Olmo, G.: A global bio-optical database derived from Biogeochemical Argo float measurements within the layer of interest for field and remote ocean color applications, *SEANOE*, <https://doi.org/10.17882/47142>, 2016b.
- Organelli, E., Bricaud, A., Gentili, B., Antoine, D., and Vellucci, V.: Retrieval of Colored Detrital Matter (CDM) light absorption coefficients in the Mediterranean Sea using field and satellite ocean color radiometry: Evaluation of bio-optical inversion models, *Remote Sens. Environ.*, 186, 297–310, <https://doi.org/10.1016/j.rse.2016.08.028>, 2016c.
- Organelli, E., Claustre, H., Bricaud, A., Barbieux, M., Uitz, J., D'Ortenzio, F., and Dall'Olmo, G.: Bio-optical anomalies in the world's oceans: an investigation on the diffuse attenuation coefficients for downward irradiance derived from Biogeochemical Argo float measurements, *J. Geophys. Res.-Oceans*, 122, 3543–3564, <https://doi.org/10.1002/2016JC012629>, 2017.
- Peloquin, J., Swan, C., Gruber, N., Vogt, M., Claustre, H., Ras, J., Uitz, J., Barlow, R., Behrenfeld, M., Bidigare, R., Dierssen, H., Ditullio, G., Fernandez, E., Gallienne, C., Gibb, S., Goericke, R., Harding, L., Head, E., Holligan, P., Hooker, S., Karl, D., Landry, M., Letelier, R., Llewellyn, C. A., Lomas, M., Lucas, M., Manino, A., Marty, J.-C., Mitchell, B. G., Muller-Karger, F., Nelson, N., O'Brien, C., Prezelin, B., Repeta, D., Jr. Smith, W. O., Smythe-Wright, D., Stumpf, R., Subramaniam, A., Suzuki, K., Trees, C., Vernet, M., Wasmund, N., and Wright, S.: The MARE-DAT global database of high performance liquid chromatography marine pigment measurements, *Earth Syst. Sci. Data*, 5, 109–123, <https://doi.org/10.5194/essd-5-109-2013>, 2013.
- Poteau, A., Boss, E., and Claustre, H.: Particulate concentration and seasonal dynamics in the mesopelagic ocean based on the backscattering coefficient measured with Biogeochemical-Argo floats, *Geophys. Res. Lett.*, 44, 6933–6939, <https://doi.org/10.1002/2017GL073949>, 2017.
- Proctor, C. W. and Roesler, C. S.: New insights on obtaining phytoplankton concentration and composition from in situ multispectral chlorophyll fluorescence, *Limnol. Oceanogr.-Meth.*, 8, 695–708, 2010.

- Roesler, C. S., Uitz, J., Claustre, H., Boss, E., Xing, X., Organelli, E., Briggs, N., Bricaud, A., Schmechtig, C., Poteau, A., D'Ortenzio, F., Ras, J., Drapeau, S., Haëntjens, N., and Barbioux, M.: Recommendations for obtaining unbiased chlorophyll estimates from in situ chlorophyll fluorometers: a global analysis of WET Labs ECO sensors, *Limnol. Oceanogr.-Meth.*, 15, 572–585, 2017.
- Ryder, E., Jennings, E., de Eyto, E., Dillane, M., NicAonghusa, C., Pierson, D. C., Moore, K., Rouen, M., and Poole, R.: Temperature quenching of CDOM fluorescence sensors: temporal and spatial variability in the temperature response and a recommended temperature correction equation, *Limnol. Oceanogr.-Meth.*, 10, 1004–1010, 2012.
- Sackmann, B. S., Perry, M. J., and Eriksen, C. C.: Seaglider observations of variability in daytime fluorescence quenching of chlorophyll-a in Northeastern Pacific coastal waters, *Biogeosciences Discuss.*, <https://doi.org/10.5194/bgd-5-2839-2008>, in review, 2008.
- Satlantic: Operation manual for the OCR-504, SATLANTIC Operation Manual SAT-DN-00034, Rev. G, 66 pp., 2013.
- Sauzède, R., Lavigne, H., Claustre, H., Uitz, J., Schmechtig, C., D'Ortenzio, F., Guinet, C., and Pesant, S.: Vertical distribution of chlorophyll a concentration and phytoplankton community composition from in situ fluorescence profiles: a first database for the global ocean, *Earth Syst. Sci. Data*, 7, 261–273, <https://doi.org/10.5194/essd-7-261-2015>, 2015.
- Schmechtig, C., Claustre, H., Poteau, A., and D'Ortenzio, F.: Bio-Argo quality control manual for the Chlorophyll-A concentration, Argo, <https://doi.org/10.13155/35385>, 2014.
- Schmechtig, C., Poteau, A., Claustre, H., D'Ortenzio, F., Dall'Olmo, G., and Boss, E.: Processing Bio-Argo particle backscattering at the DAC level, Argo, <https://doi.org/10.13155/39459>, 2016.
- Soppa, M. A., Dinter, T., Taylor, B. B., and Bracher, A.: Satellite derive euphotic depth in the Southern Ocean: Implications for primary production modelling, *Remote Sens. Environ.*, 137, 198–211, 2013.
- Stanev, E. V., Grayek, S., Claustre, H., Schmechtig, C., and Poteau, A.: Water intrusions and particle signatures in the Black Sea: a Biogeochemical-Argo float investigation, *Ocean Dynam.*, 67, 1119–1136, 2017.
- Sullivan, J. M., Twardowski, M. S., Zaneveld, J. R. V., and Moore, C. C.: Radiative transfer and optical properties of atmosphere and underlying surface: Measuring optical backscattering in water, edited by: Kokhanovsky, A., *Light Scattering Reviews Vol. 7*, Praxis Publishing Ltd, 189–224, 2013.
- Valente, A., Sathyendranath, S., Brotas, V., Groom, S., Grant, M., Taberner, M., Antoine, D., Arnone, R., Balch, W. M., Barker, K., Barlow, R., Bélanger, S., Berthon, J.-F., Besiktepe, S., Brando, V., Canuti, E., Chavez, F., Claustre, H., Croux, R., Frouin, R., García-Soto, C., Gibb, S. W., Gould, R., Hooker, S., Kahru, M., Klein, H., Kratzer, S., Loisel, H., McKee, D., Mitchell, B. G., Moisan, T., Muller-Karger, F., O'Dowd, L., Ondrusek, M., Poulton, A. J., Repecaud, M., Smyth, T., Sosik, H. M., Twardowski, M., Voss, K., Werdell, J., Wernand, M., and Zibordi, G.: A compilation of global bio-optical in situ data for ocean-colour satellite applications, *Earth Syst. Sci. Data*, 8, 235–252, <https://doi.org/10.5194/essd-8-235-2016>, 2016.
- Westberry, T. K., Boss, E., and Lee, Z.: Influence of Raman scattering on ocean color inversion models, *Appl. Optics*, 52, 5552–5561, 2013.
- WET Labs: ECO Fluorometers and Scattering Sensors, User manual eco160114, Edition B, 34 pp., 2016.
- Wong, A., Keeley, R., Carval, T., and the Argo Data Management Team: Argo quality control manual for CTD and trajectory data, Version 3, 56 pp., <https://doi.org/10.13155/33951>, 2015.
- Wrates, C. J., Hanson, P. C., Stacy, T. L., Morison, K. M., Mather, J., Hu, Y.-H., and Milewski, P.: A temperature compensation method for CDOM fluorescence sensors in freshwater, *Limnol. Oceanogr.-Meth.*, 9, 296–301, 2011.
- Xing, X., Morel, A., Claustre, H., Antoine, D., D'Ortenzio, F., Poteau, A., and Mignot, A.: Combined processing and mutual interpretation of radiometry and fluorimetry from autonomous profiling Bio-Argo floats: Chlorophyll a retrieval, *J. Geophys. Res.*, 116, C06020, <https://doi.org/10.1029/2010JC006899>, 2011.
- Xing, X., Claustre, H., Blain, S., D'Ortenzio, F., Antoine, D., Ras, J., and Guinet, C.: Quenching correction for in vivo chlorophyll fluorescence acquired by autonomous platforms: A case study with instrumented elephant seals in the Kerguelen region (Southern Ocean), *Limnol. Oceanogr.-Meth.*, 10, 483–495, 2012.
- Xing, X., Claustre, H., Boss, E., Roesler, C., Organelli, E., Poteau, A., Barbioux, M., and D'Ortenzio, F.: Correction of profiles of in-situ chlorophyll fluorometry for the contribution of fluorescence originating from non-algal matter, *Limnol. Oceanogr.-Meth.*, 15, 80–93, <https://doi.org/10.1002/lom3.10144>, 2017.
- Zaneveld, R., Boss, E., and Barnard, A.: Influence of surface waves on measured and modeled irradiance profiles, *Appl. Optics*, 40, 1442–1449, <https://doi.org/10.1364/AO.40.001442>, 2001.
- Zhang, X., Hu, L., and He, M.-X.: Scattering by pure seawater: effect of salinity, *Opt. Express*, 17, 5698–5710, 2009.